



FEMA

Daily Operations Briefing

Wednesday, May 6, 2020

8:30 a.m. ET

National Current Operations & Monitoring



FEMA

Significant Incidents or Threats:

- COVID-19

Declaration Activity: None

COVID-19 Update



Situation: FEMA, HHS, and federal partners are working with our state, local, tribal, and territorial governments to execute a whole-of-America response to the COVID-19 pandemic. The President released Guidelines for Opening American Up Again and the Federal Government is continuing to work with governors across the country to ensure they have the equipment, supplies, and testing resources they need to reopen safely and responsibly. The HHS Secretary issued a renewal of the January 31 COVID-19 Public Health Emergency Declaration for 90 days.

- FEMA NRCC remains at Level I in unified effort with HHS SOC; all FEMA RRCCs activated
- FEMA IMAT-A teams deployed to 27 states/territories; LNOs deployed to 37 states/territories
- 56 major disaster declarations approved; All State / Territory EOCs activated
- 48,516 (+320) FEMA, DOD, HHS, VA and CDC personnel deployed/activated in support of COVID-19 response
 - 3,148 (-7) FEMA Employees deployed in support of COVID-19 response
- Testing: 7,323,977 (+231,821) cumulative as of May 5

Operational Task Forces

Community Based Testing Sites (CBTS)

- 155,447 (+3,381) samples collected at CBTS locations since March 20
- 132,603 (+7,245) tests processed from Private-Partnership Testing Sites since April 5

Supply Chain Stabilization

- Project Airbridge Activity: 120/135 flights complete; 15 flights scheduled

Health and Medical Lifelines

Public Health

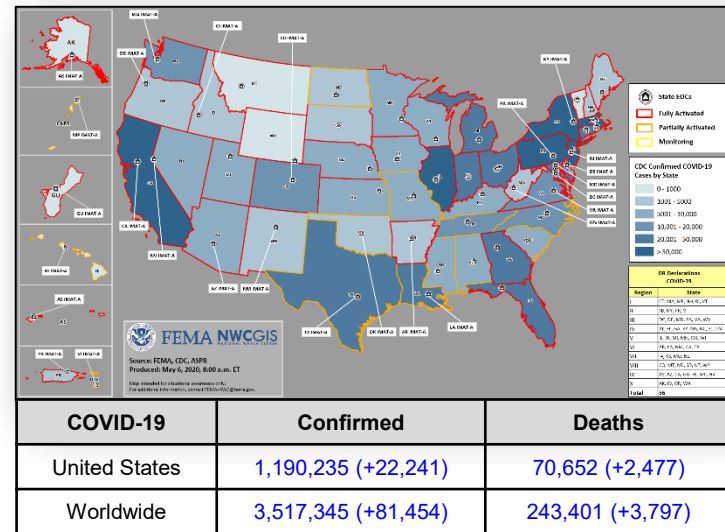
- Personal Protective Equipment
 - GA: 14 days worth of PPE will be delivered to nursing home staff
- Fatality Management: Nursing homes account for 60% of COVID-19 fatalities in MA, and 71% of fatalities in RI; two highest rates in U.S.

Medical Care

- Hospital Capacity: CA Emergency Medical Services Authority training USNS Mercy crew to form Joint CA Medical Assistance Teams / U.S. Navy Medical Strike Teams to support nursing homes in Los Angeles

Other Domestic Lifelines

- Food, Water, & Shelter: NE: Five hotel chains contracted to house healthy workers employed in animal processing plants; Employee shortage has reduced/stopped work in eight processing plants

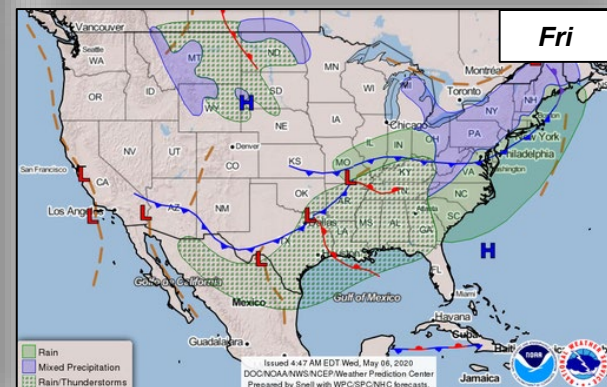
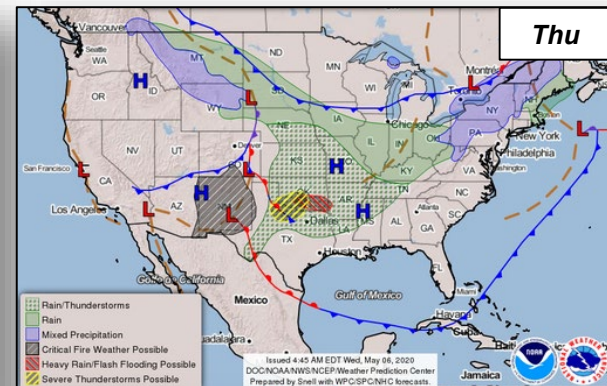
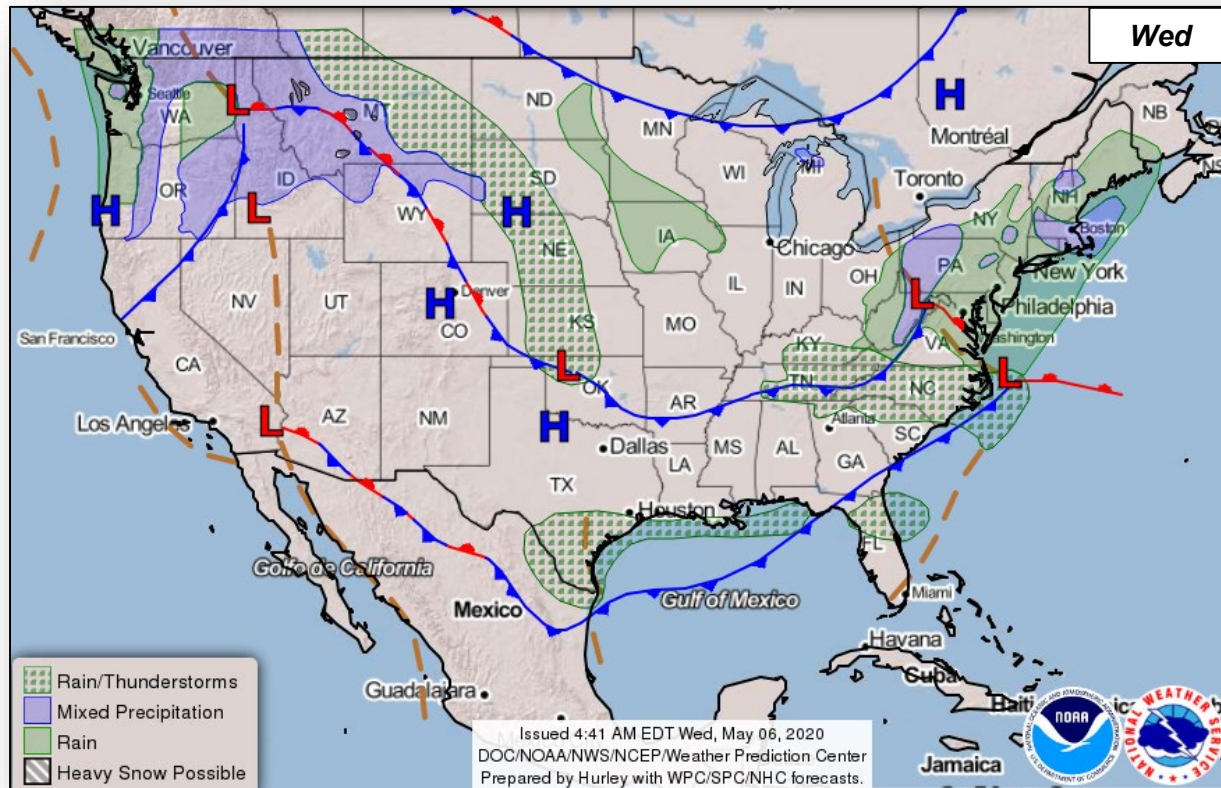


(FEMA SLB COVID-19, May 5)

National Weather Forecast



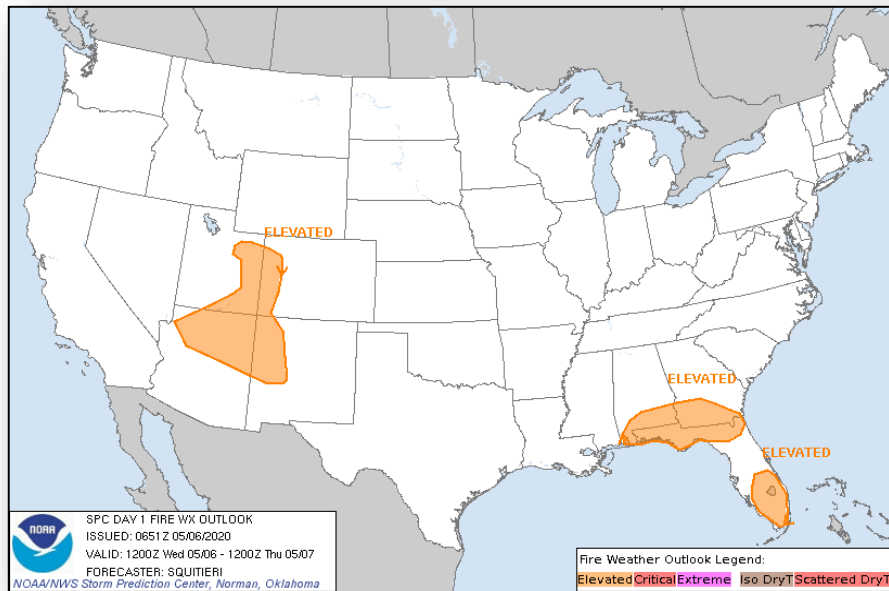
FEMA



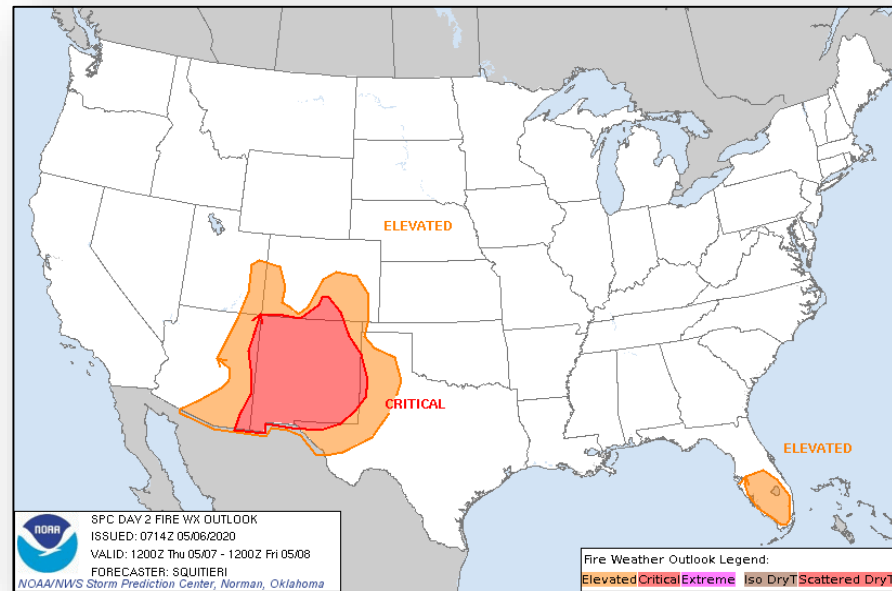
Fire Weather Outlook



FEMA



Today

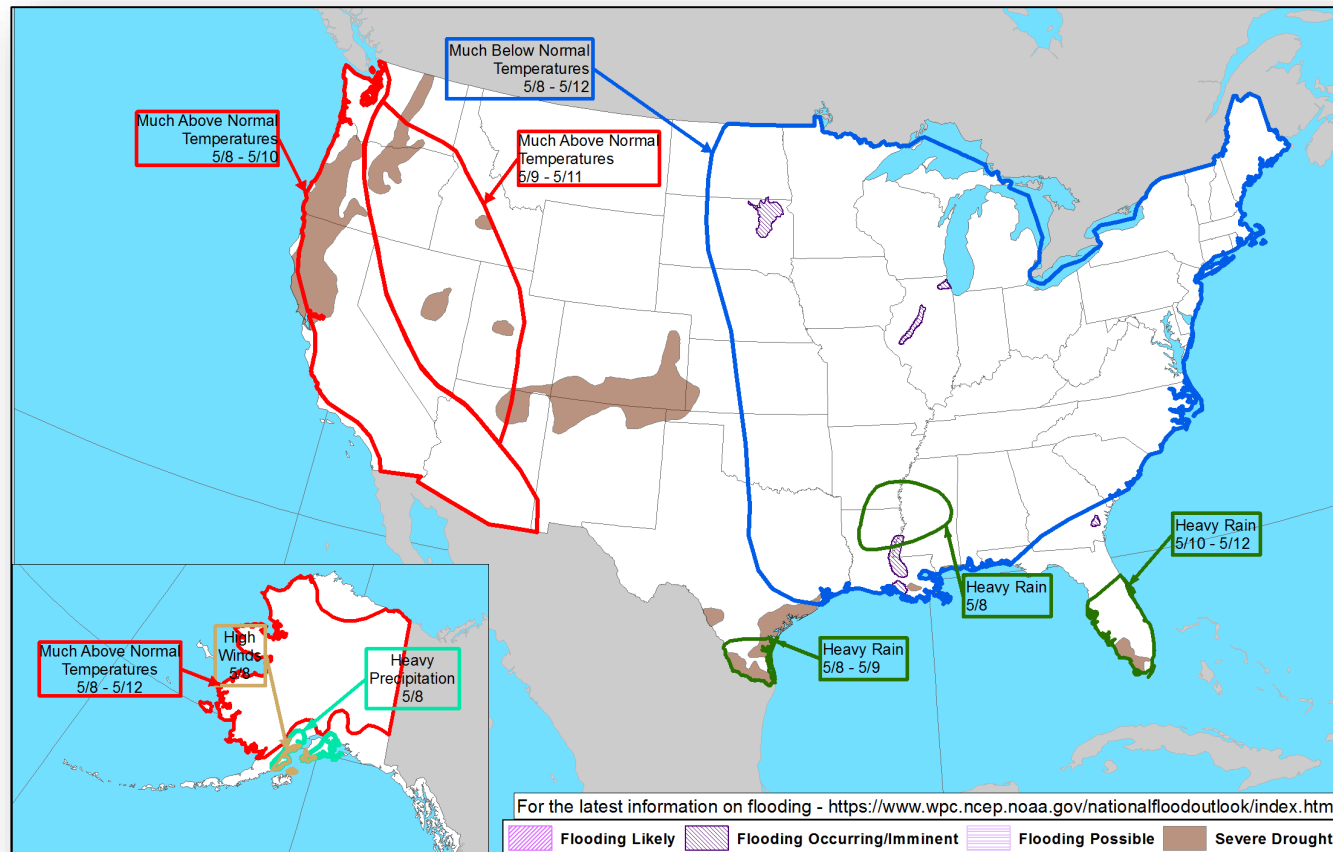


Tomorrow

Hazards Outlook – May 8-12



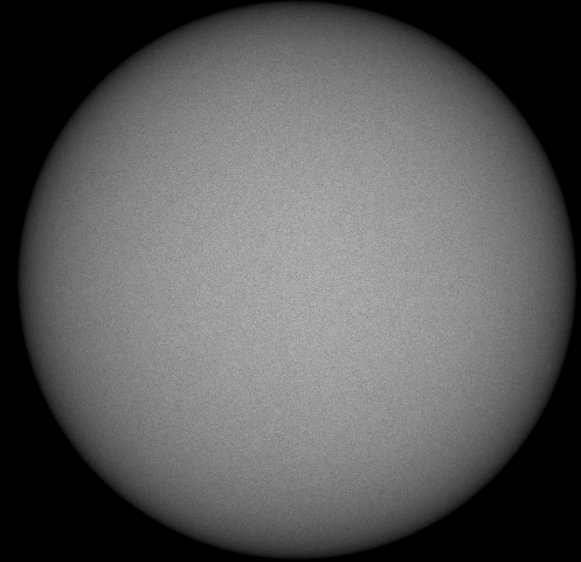
FEMA



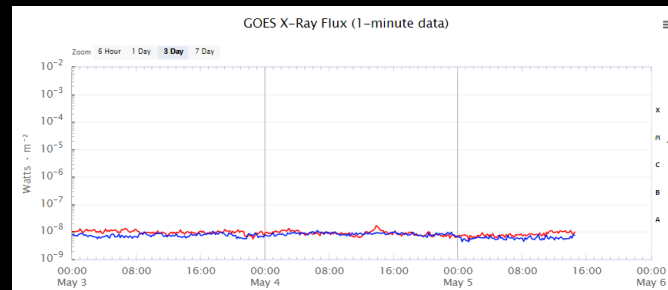
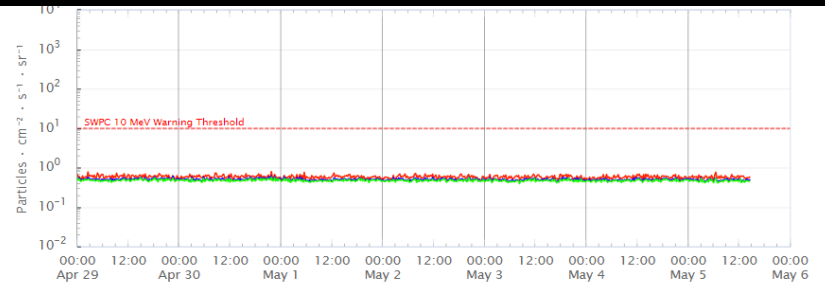
Space Weather Summary/Outlook



| Space Weather Summary 6 May 2020 | Past 48 Hours | Forecast: 7 May | Forecast: 8 May |
|-------------------------------------|------------------|------------------------|------------------------|
| Radio Blackouts (R Scale) | None | R1-R2: 5% R3-R5: 1% | R1-R2: 5% R3-R5: 1% |
| Solar Radiation Storms (S Scale) | None | S1 or >: 1% | S1 or >: 1% |
| Geomagnetic Storms (G Scale) | None | None | None |



Threat of Severe or Extreme activity levels is very low



Joint Preliminary Damage Assessments



FEMA

| Region | State / Location | Event | IA/PA | Number of Counties | | Start – End |
|--------|------------------|-------------------------|-------|--------------------|-----------|-------------|
| | | | | Requested | Completed | |
| VI | TX | Tornado Apr 22 | IA | 5 | 0 | 4/30 – TBD |
| | | | PA | 0 | 0 | N/A |
| | AR | Severe Storms Apr 12 | IA | 8 | 0 | 5/1 – TBD |
| | | | PA | 11 | 0 | 5/1 – TBD |

COVID-19 Declaration Requests in Process – 1



FEMA

| State / Tribe / Territory – Incident Description | Type | IA | PA | HM | Requested |
|--|------|----|----|----|-----------|
| STOF (Seminole Tribe of Florida) – COVID-19 | DR | X | X | X | Apr 22 |

Declaration Requests in Process – 5

| State / Tribe / Territory – Incident Description | Type | IA | PA | HM | Requested |
|--|------|----|----|----|-----------|
| NC – Severe Storms, Tornadoes, and Flooding | DR | | X | X | Apr 9 |
| AR – Severe Storms, Tornadoes, and Straight-line Winds | DR | X | X | X | Apr 24 |
| AL – Severe Storms and Flooding | DR | | X | X | Apr 25 |
| HI – Severe Storms and Flooding | DR | | X | X | Apr 27 |
| TX – Severe Storms, Straight-line Winds, and Tornadoes (Appeal) | DR | | X | X | May 1 |



FEMA

**FEMA's mission is helping people
before, during, and after disasters.**

Click [here](#) to subscribe to this briefing.