



TROPICAL UPDATE



5:00 PM EDT

Thursday, August 20, 2020

Tropical Depression #13 – Central Atlantic

Tropical Depression #14 – Central Caribbean

Tropical Wave Near Africa (40%)

This update is intended for government and emergency response officials, and is provided for informational and situational awareness purposes only. Forecast conditions are subject to change based on a variety of environmental factors. For additional information, or for any life safety concerns with an active weather event please contact your County Emergency Management or Public Safety Office, local National Weather Service forecast office, or visit the National Hurricane Center website at www.hurricanes.gov.



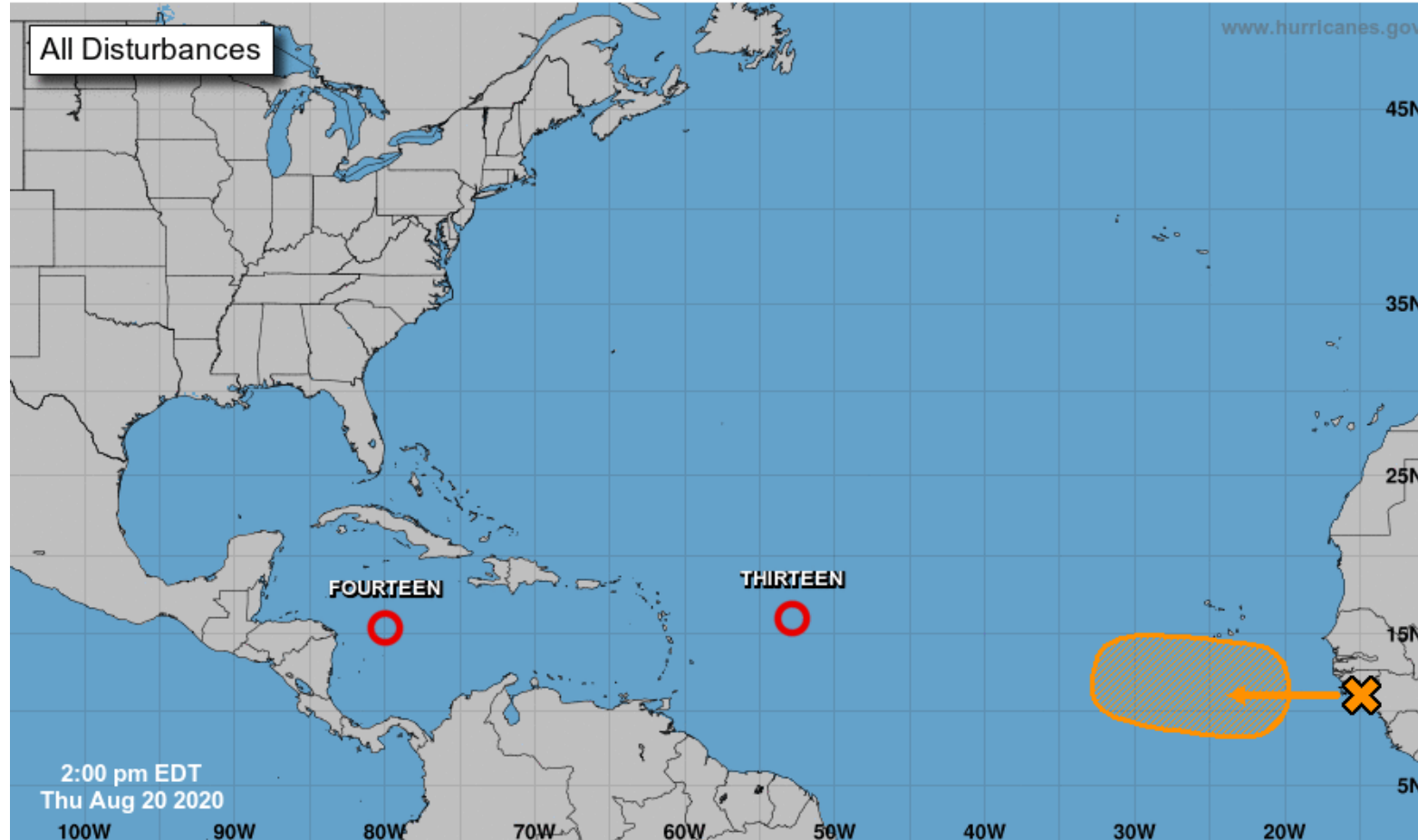
Tropical Weather Outlook

Possible Areas of Development During the Next 5 Days ([LINK](#))



Five-Day Graphical Tropical Weather Outlook

National Hurricane Center Miami, Florida



Current Disturbances and Five-Day Cyclone Formation Chance: < 40% 40-60% > 60%

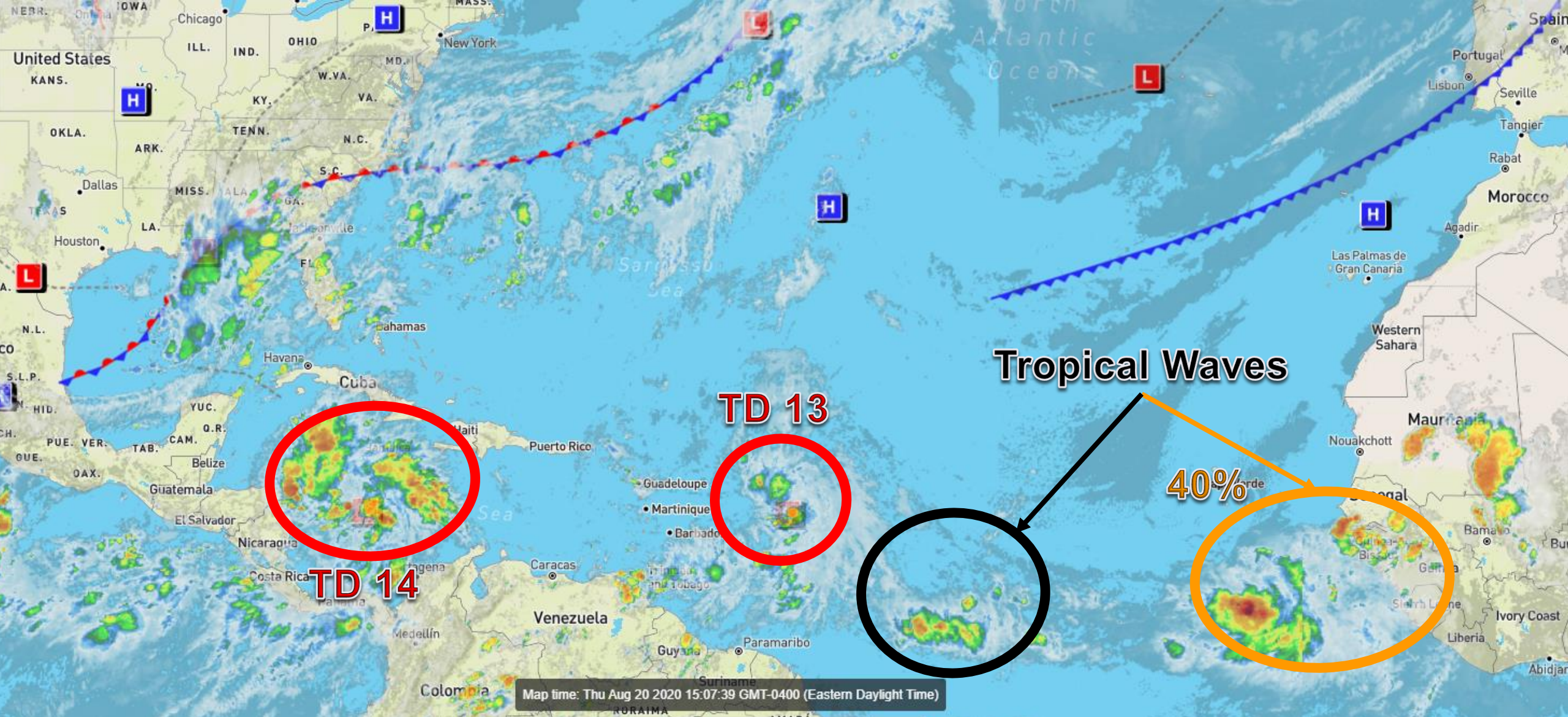
Tropical or Sub-Tropical Cyclone: Depression Storm Hurricane

Post-Tropical Cyclone or Remnants



Atlantic Basin Satellite Image

Chance of development: — None — Low — Medium — High





Steering Currents

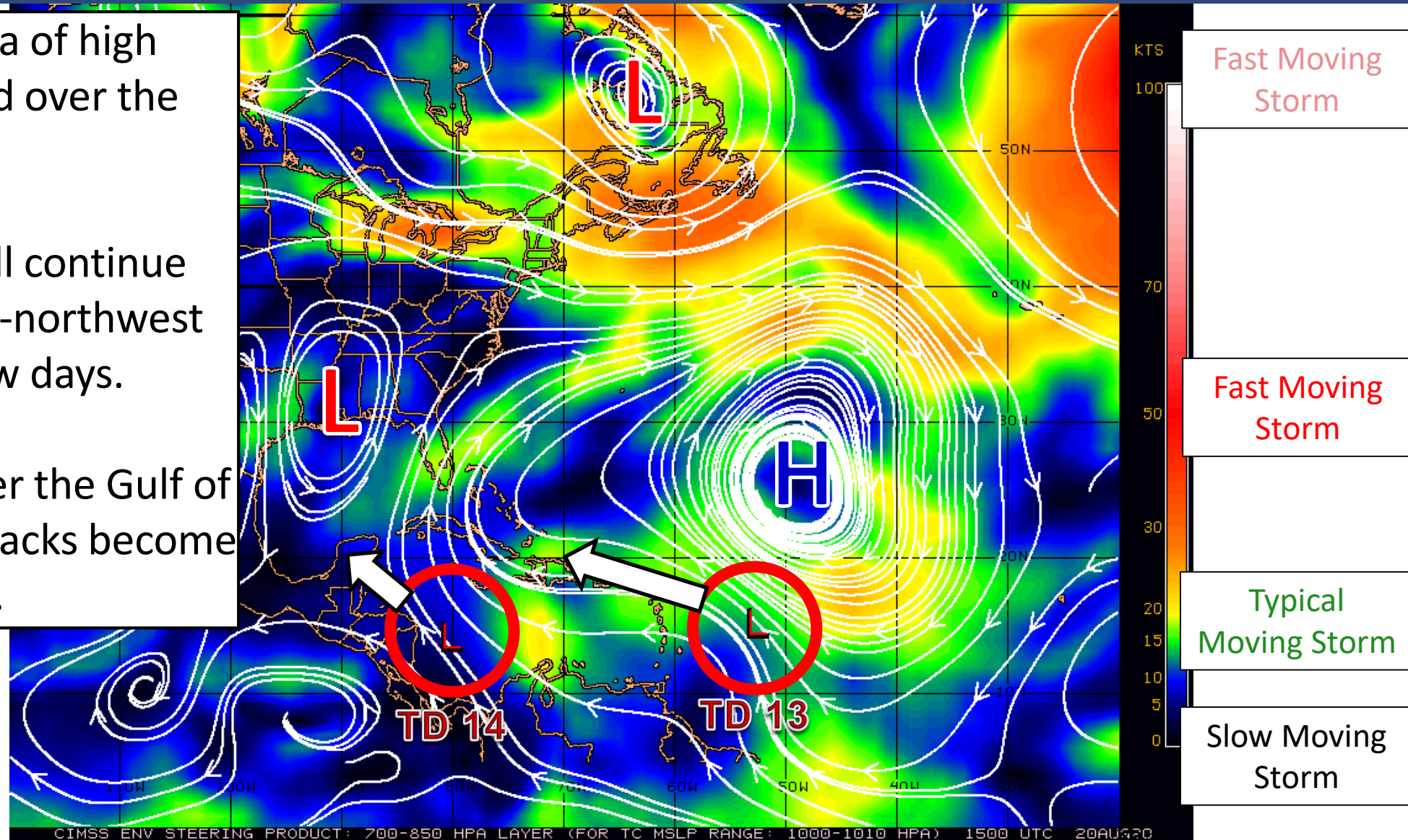
What is moving the systems?

Color denotes the movement speed through the atmosphere and thin white lines denote direction. Tightly clustered white lines represent faster movement as well.

A large, strong area of high pressure is centered over the Atlantic.

The two systems will continue moving west or west-northwest over the next few days.

Once the systems enter the Gulf of Mexico, the forecast tracks become uncertain.



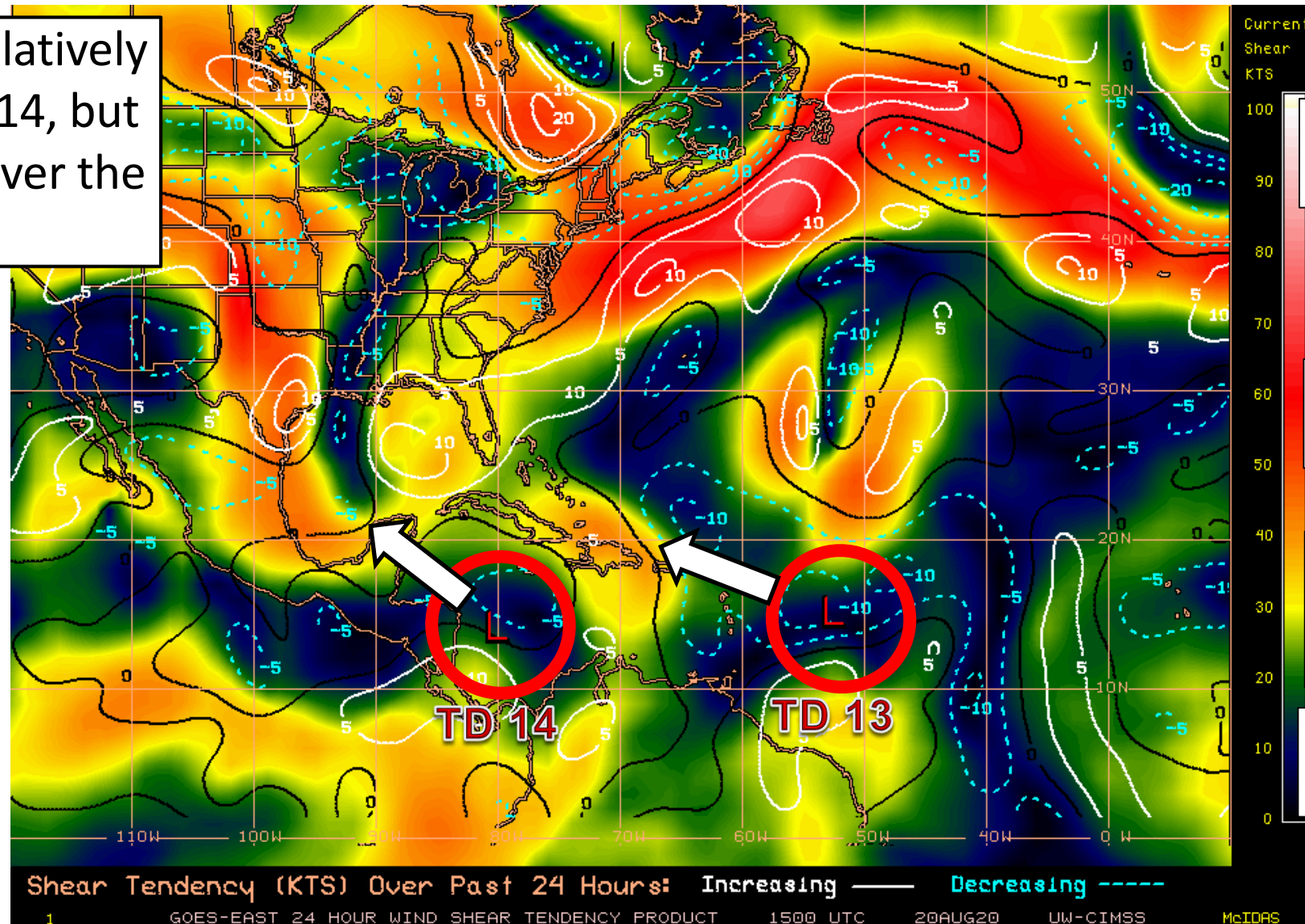


Wind Shear

Is the environment favorable for the systems?

Color denotes the amount of wind shear and the lines denote how it have changed over the last 24 hours (dotted lines show decreasing shear and solid lines show increasing).

Wind shear remains relatively light near TD 13 & TD 14, but may increase slightly over the next day or so.



HIGH Shear
(Unfavorable)

HIGH Shear
(Unfavorable)

MODERATE
Shear
(Neutral)

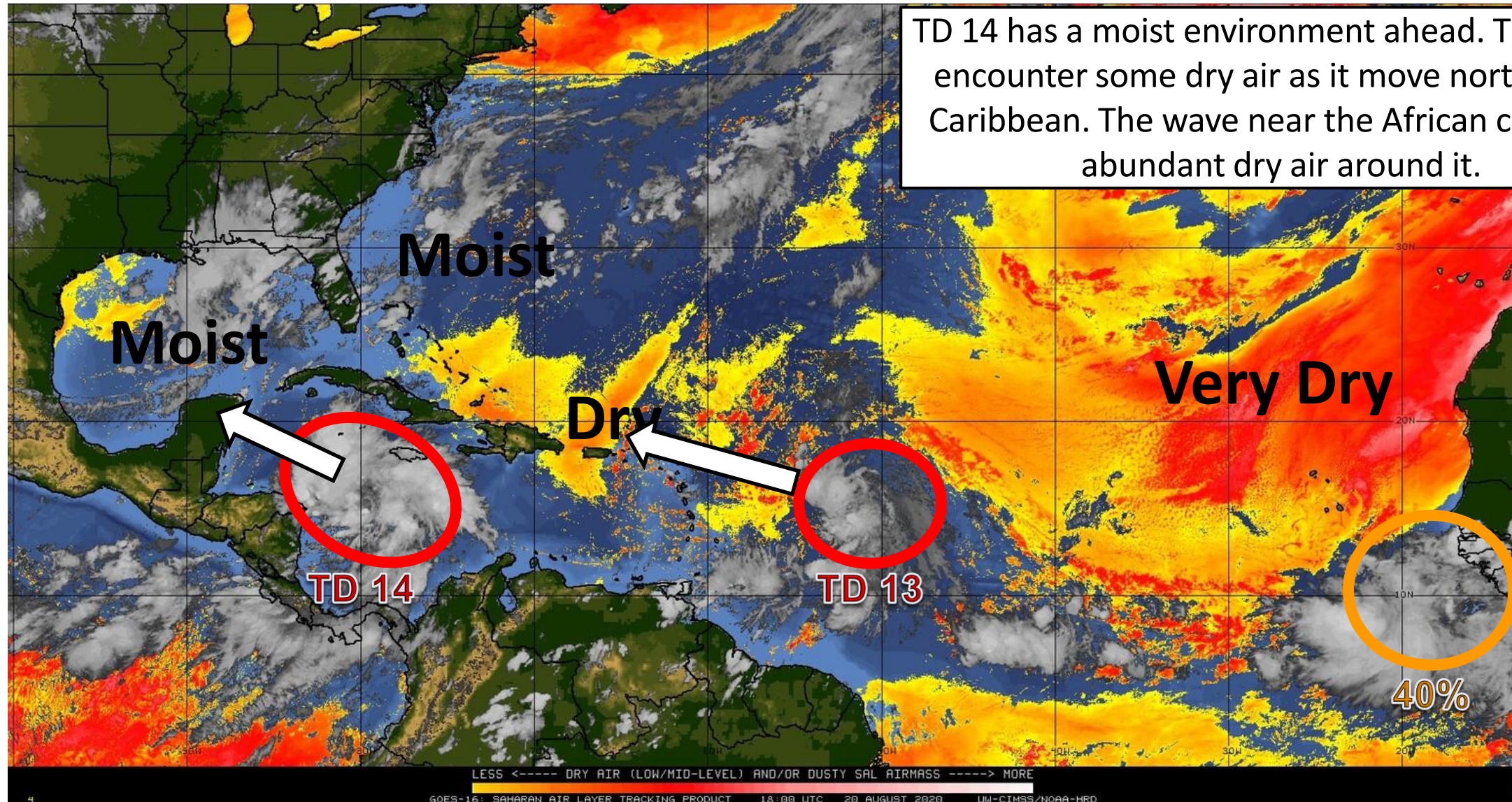
LOW Shear
(Favorable)



Dry Air & Saharan Dust

Is the environment favorable for the systems?

Color denotes concentration of Saharan Dust or dry, stable air.



TD 14 has a moist environment ahead. TD 13 may encounter some dry air as it move north of the Caribbean. The wave near the African coast has abundant dry air around it.



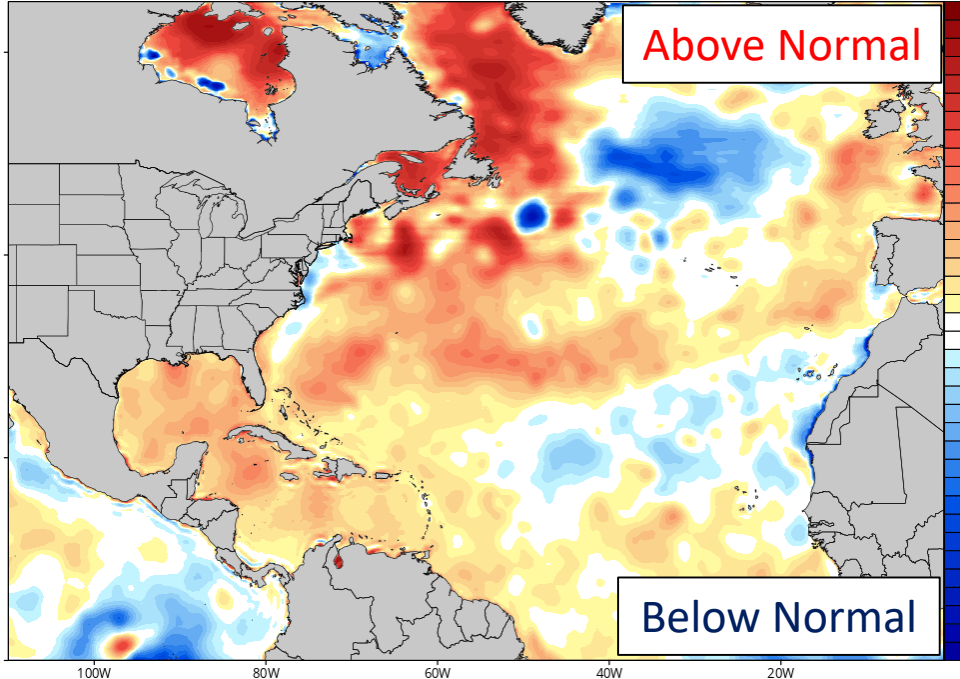
Sea Surface Temperatures & Anomalies

Is the ocean favorable for the systems?

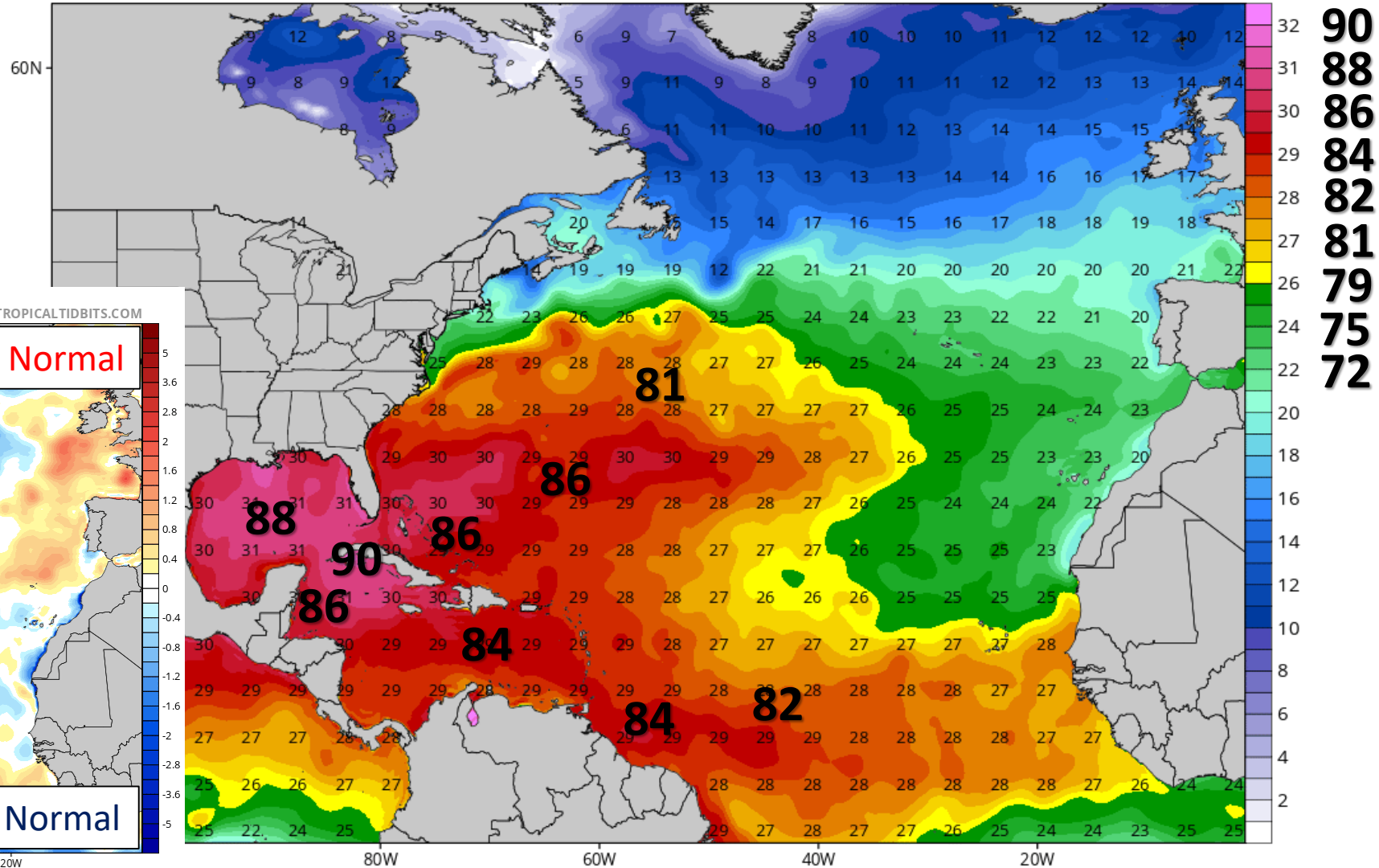
Water temperatures will warm the further west the tropical waves move.

Water temperatures are above normal across much of the Atlantic, Caribbean, and Gulf of Mexico, supporting tropical development.

CDAS Sea Surface Temperature Anomaly (°C) (based on CFSR 1981-2010 Climatology)
Analysis Time: 06z Aug 20 2020



CDAS Sea Surface Temperature (°C)
Analysis Time: 06z Aug 20 2020



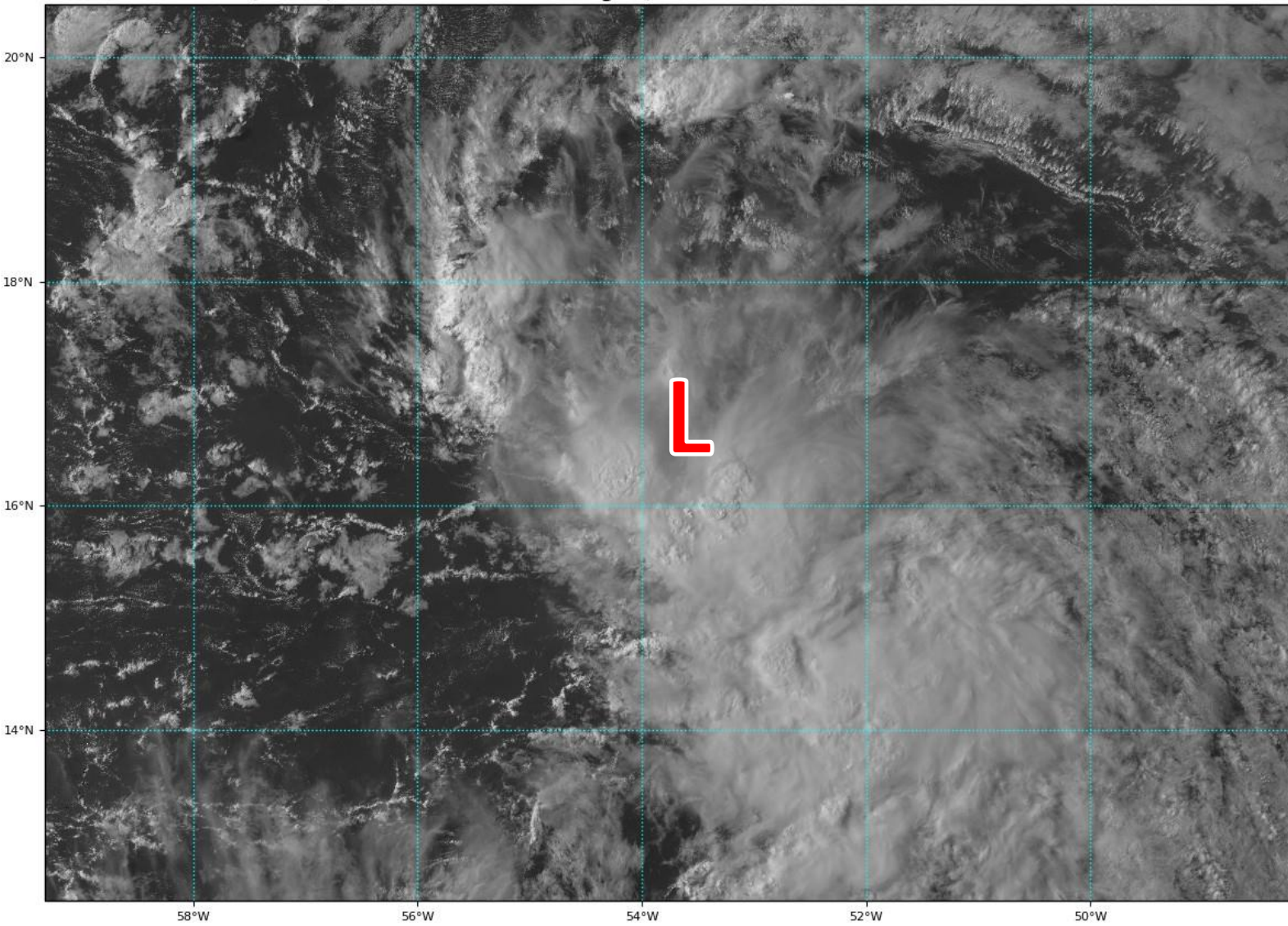


Satellite Imagery

Central Atlantic – Tropical Depression #13

GOES-16 Channel 2 (visible) Reflectance at 19:45Z Aug 20, 2020

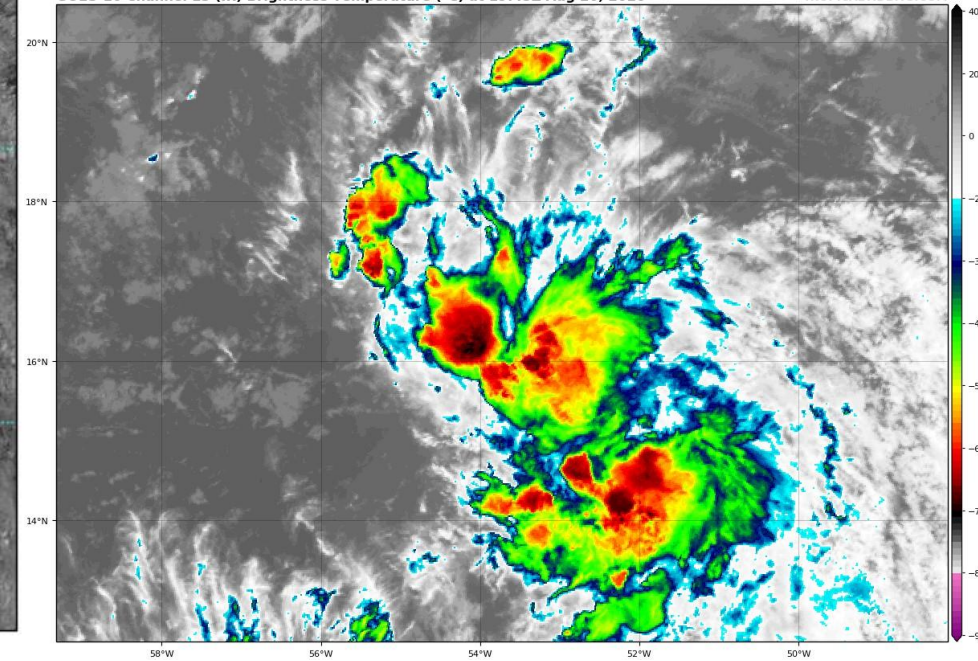
TROPICALTIDBITS.COM



Tropical Depression #13 has not become much better organized through today. Thunderstorms continue to be displaced somewhat from the center.

GOES-16 Channel 13 (IR) Brightness Temperature (°C) at 19:45Z Aug 20, 2020

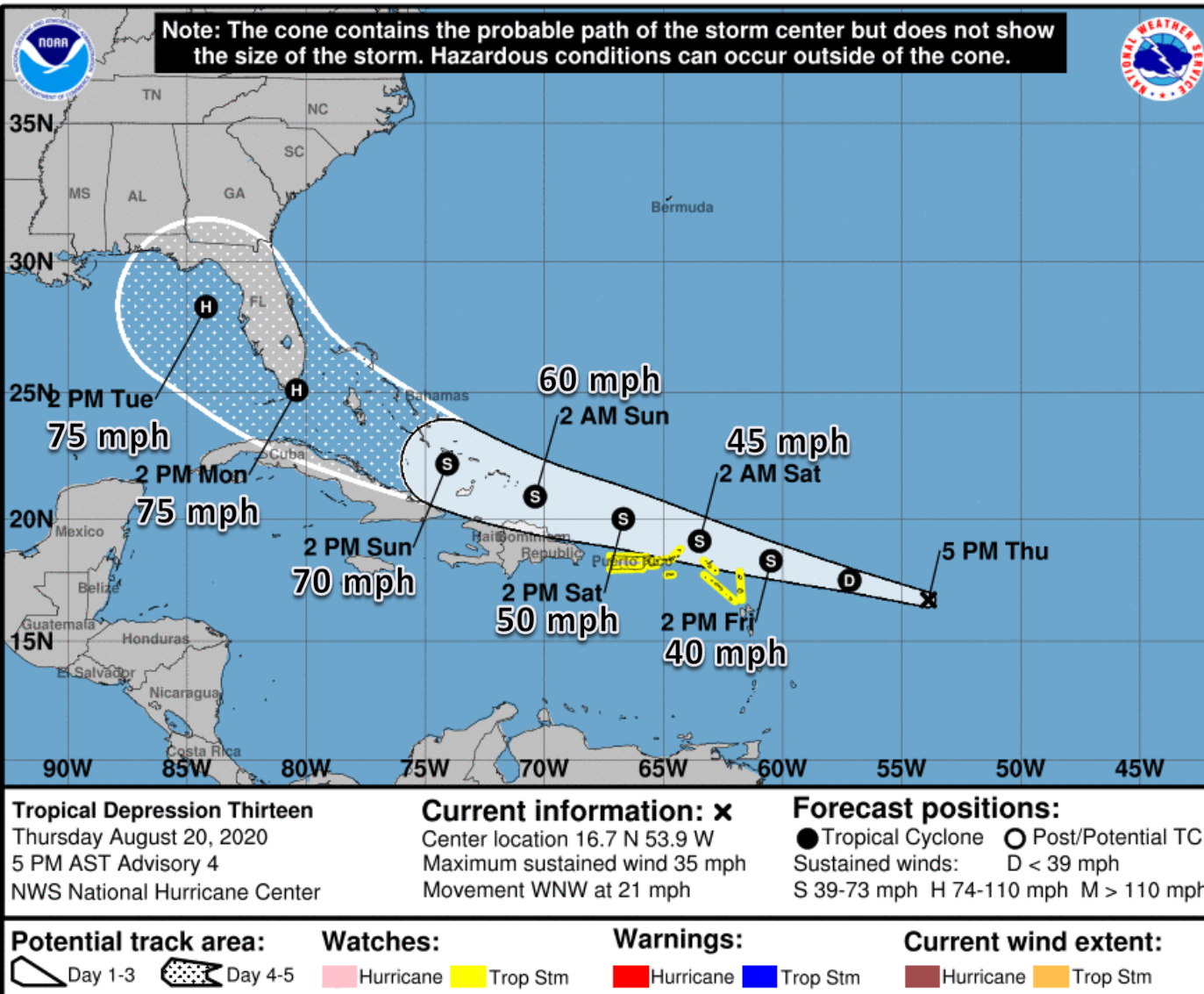
TROPICALTIDBITS.COM





Official Forecast Track

From the National Hurricane Center – Tropical Depression #13

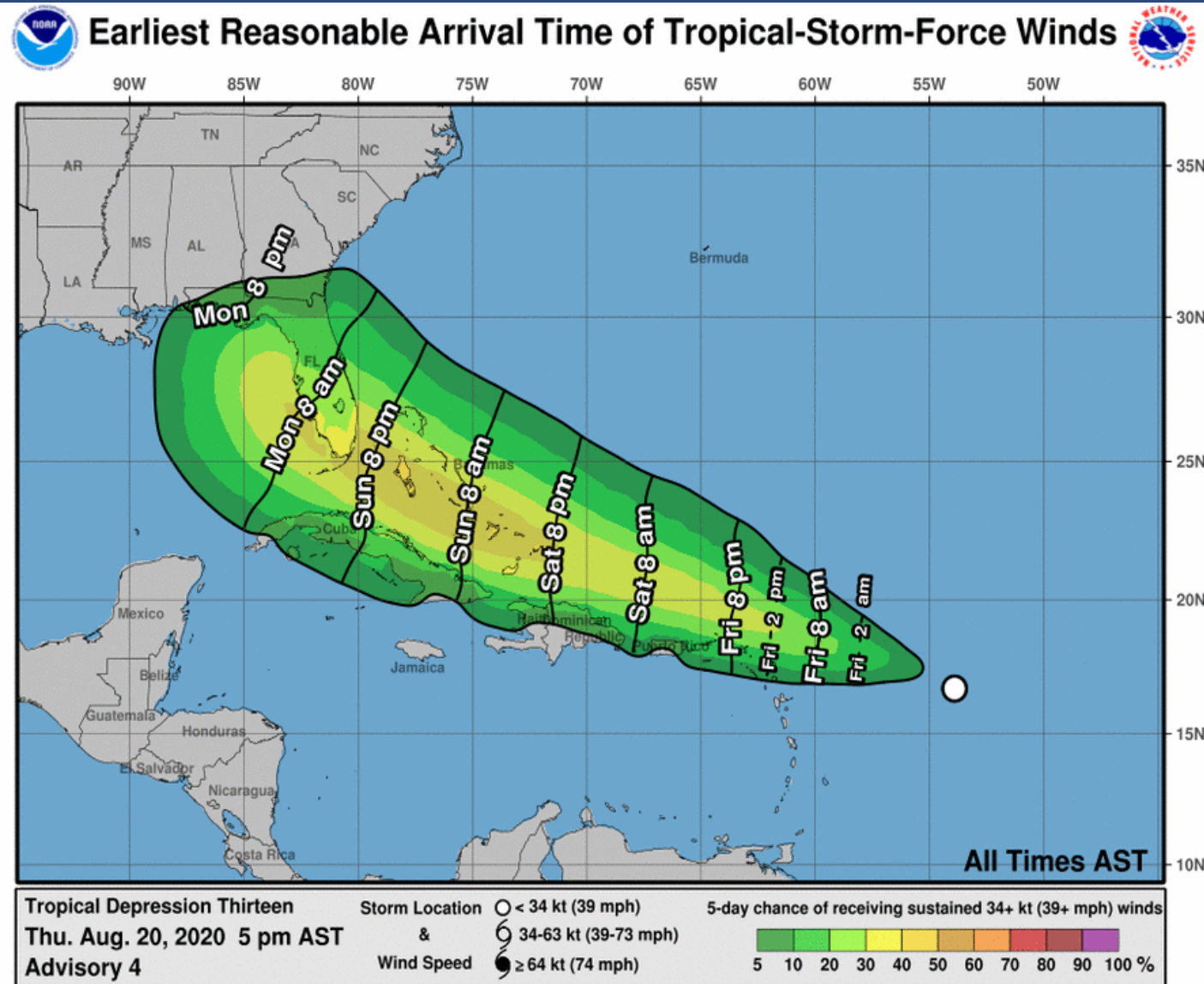


- The center of TD 13 is located about 615 miles east of the northern Leeward Islands.
- Maximum sustained winds are at 35 mph. Some strengthening is forecast, and TD 13 should become a tropical storm on Friday. TD 13 could become a hurricane by Monday.
- TD 13 is moving toward the west-northwest at 21 mph, and this general motion is expected over the next few days.
- TD 13 will likely come close to or make landfall in the Florida Peninsula or Florida Keys on Monday, and could impact the Panhandle or Big Bend on Tuesday or Wednesday.
- There still remains uncertainty in the forecast intensity due to potential land interaction and dry air.
- The track forecast becomes more uncertain next week as there may be influence from TD 14.



Time of Arrival & Wind Speed Probabilities

MOST LIKELY Time of Arrival of Tropical Storm Force Winds (>39 mph)



Key West: 30% (+1)
Marathon: 35% (+1)
Miami: 29% (+/-0)
Fort Lauderdale: 42% (+4)
West Palm Beach: 37% (+3)
Fort Pierce: 32% (+4)
Orlando: 19% (+4)
Daytona Beach: 14% (+3)
Naples: 37% (+3)
Fort Myers: 27% (+3)
Tampa: 33% (+7)
Cedar Key: 27% (+7)
Apalachicola: 21% (+8)
Panama City: 19% (+1)

Tropical storm force winds will likely begin Monday morning in South Florida and the Keys, but could begin as early as Sunday evening.

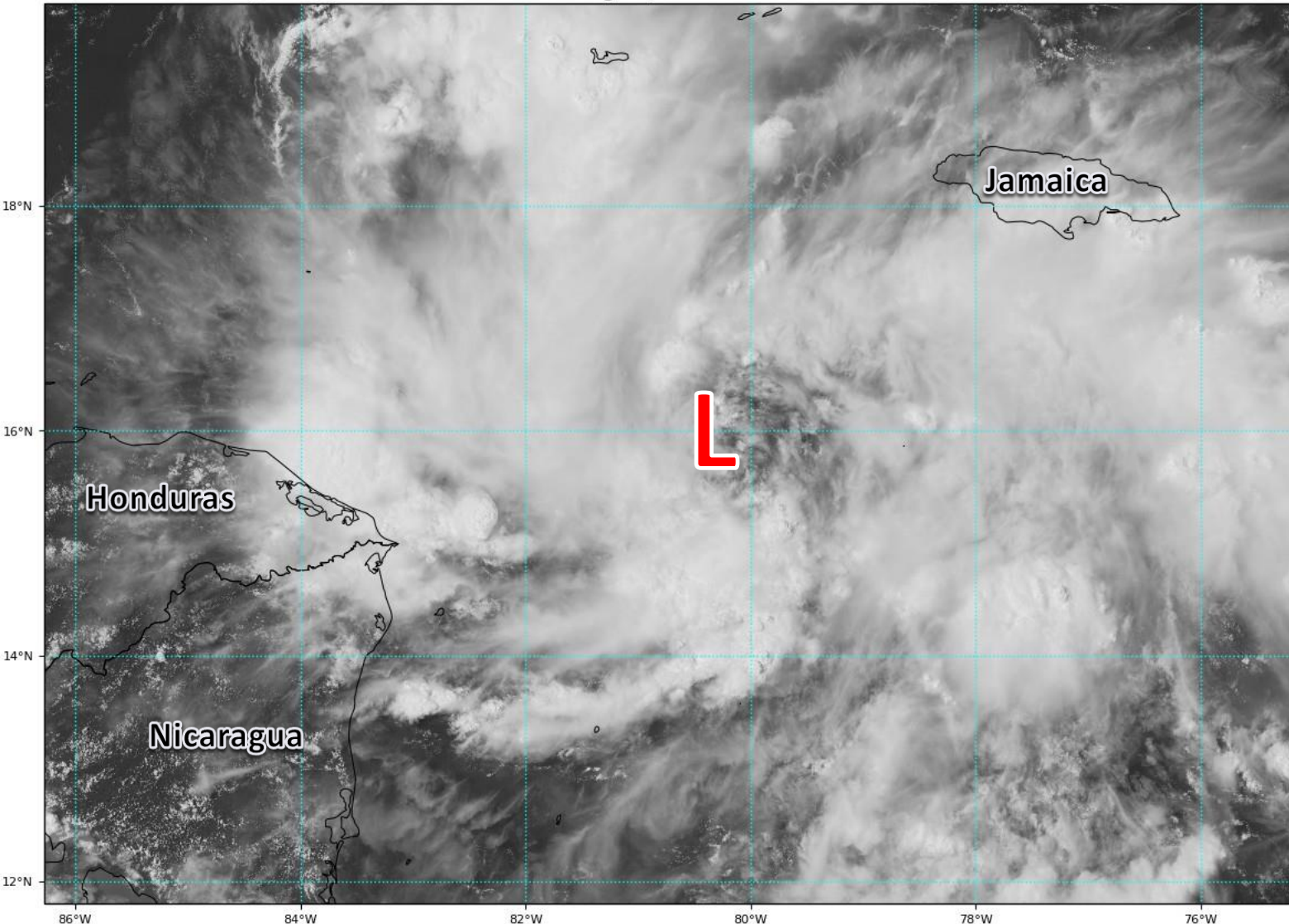


Satellite Imagery

Central Caribbean – Tropical Depression #14

GOES-16 Channel 2 (visible) Reflectance at 19:35Z Aug 20, 2020

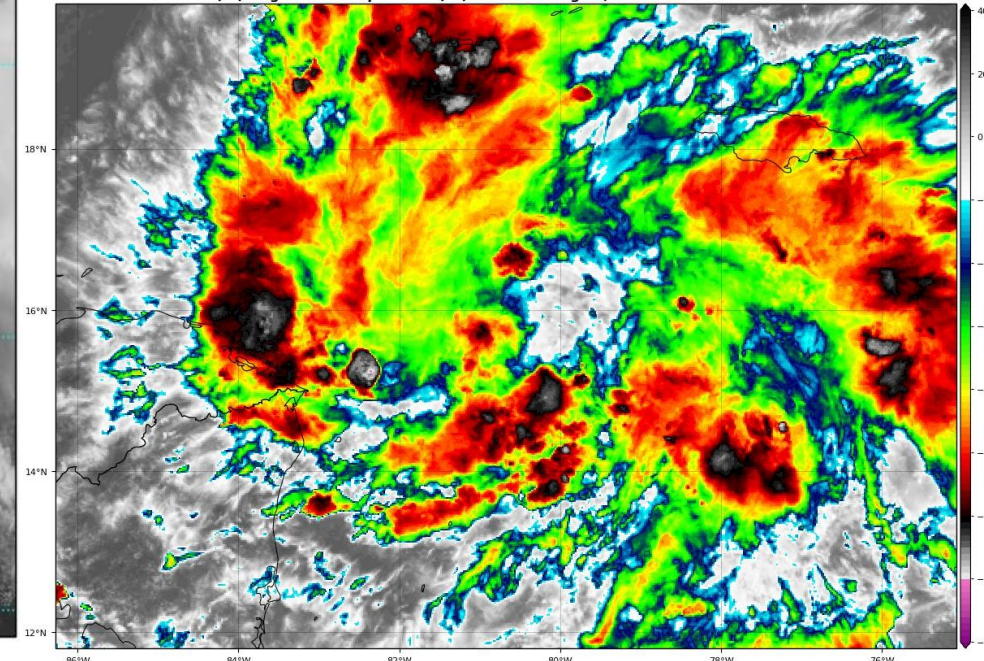
TROPICALTIDBITS.COM



Tropical Depression #14 has become better defined through the day, but the thunderstorms have not been consistent near the center.

GOES-16 Channel 13 (IR) Brightness Temperature (°C) at 19:35Z Aug 20, 2020

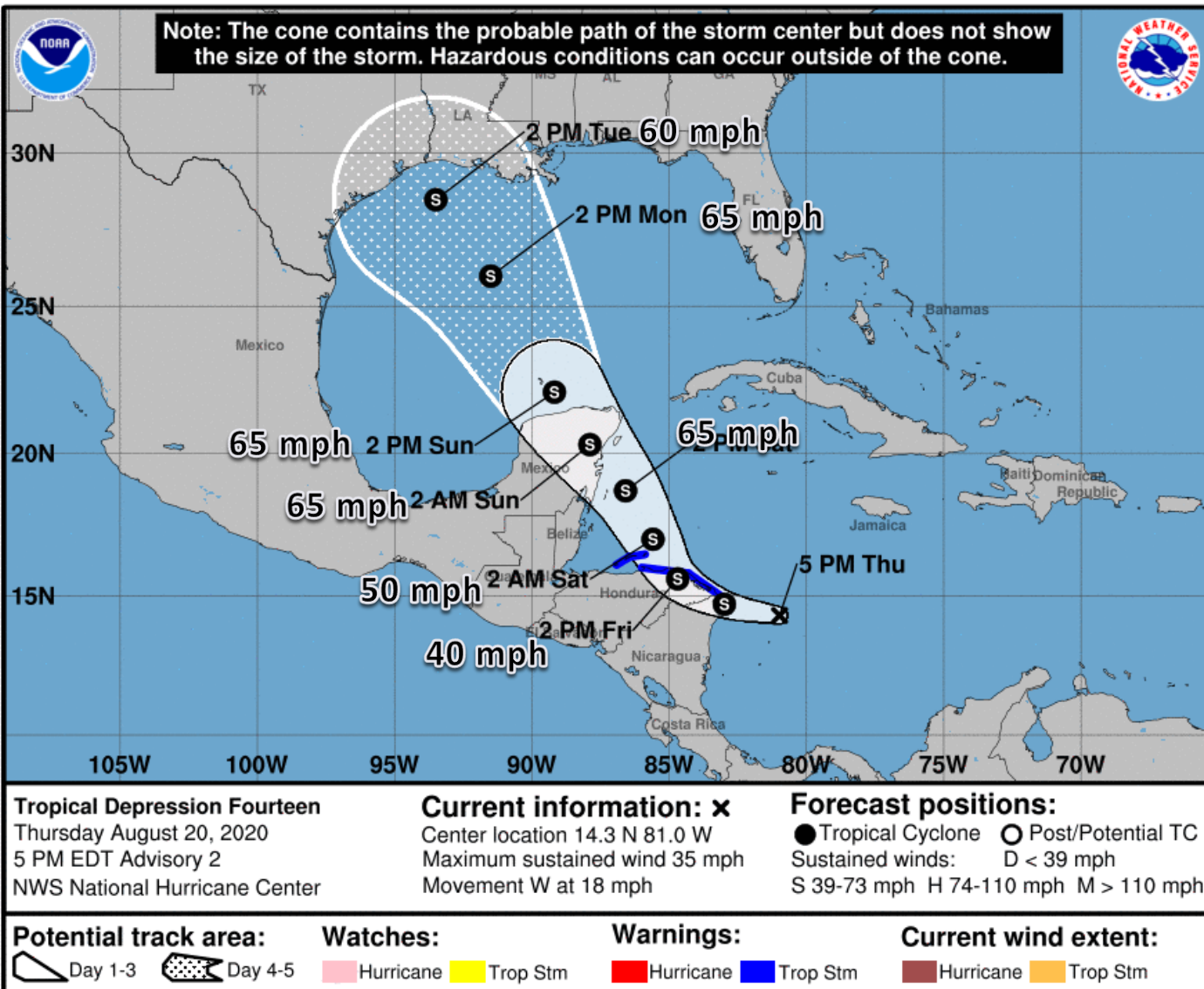
TROPICALTIDBITS.COM





Official Forecast Track

From the National Hurricane Center – Tropical Depression #14

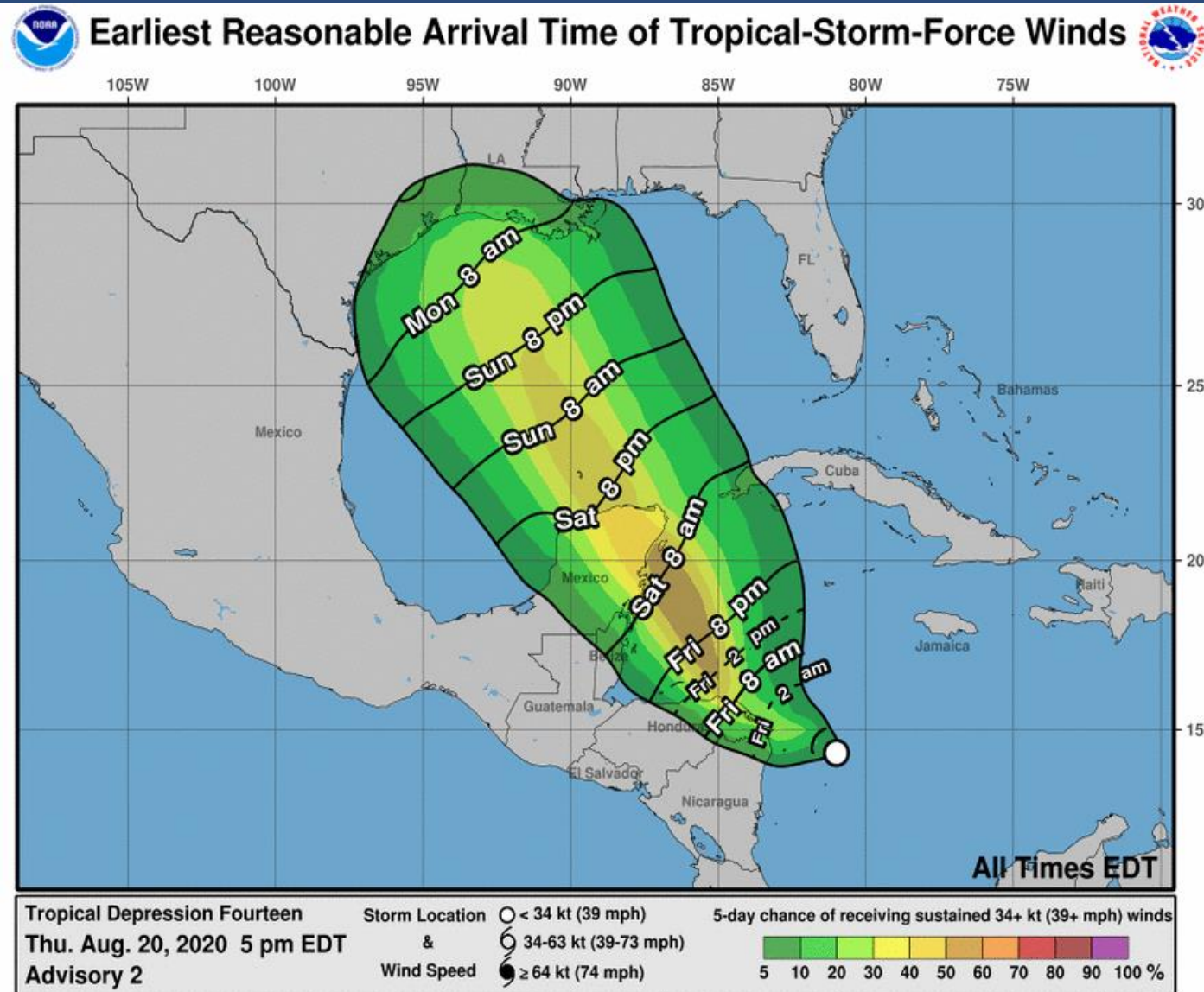


- The center of TD #14 is located about 155 miles east-southeast of Cabo Gracias a Dios on the Nicaragua/Honduras border
- Maximum sustained winds are at 35 mph, and strengthening is forecast.
- TD 14 is moving west at 18 mph, and TD 14 is forecast to make landfall in Nicaragua and Honduras on Friday. A turn toward the northwest is expected late Friday with a landfall on the Yucatan on Saturday.
- TD 14 will move into the Gulf of Mexico on Sunday. Landfall could occur along the Texas or Louisiana coast on Tuesday.



Time of Arrival & Wind Speed Probabilities

MOST LIKELY Time of Arrival of Tropical Storm Force Winds (>39 mph)



Tropical storm force winds could begin along the Louisiana and Texas coasts as early as Monday.



Tropical Weather Outlook

Possible Area of Development During the Next 5 Days ([LINK](#))



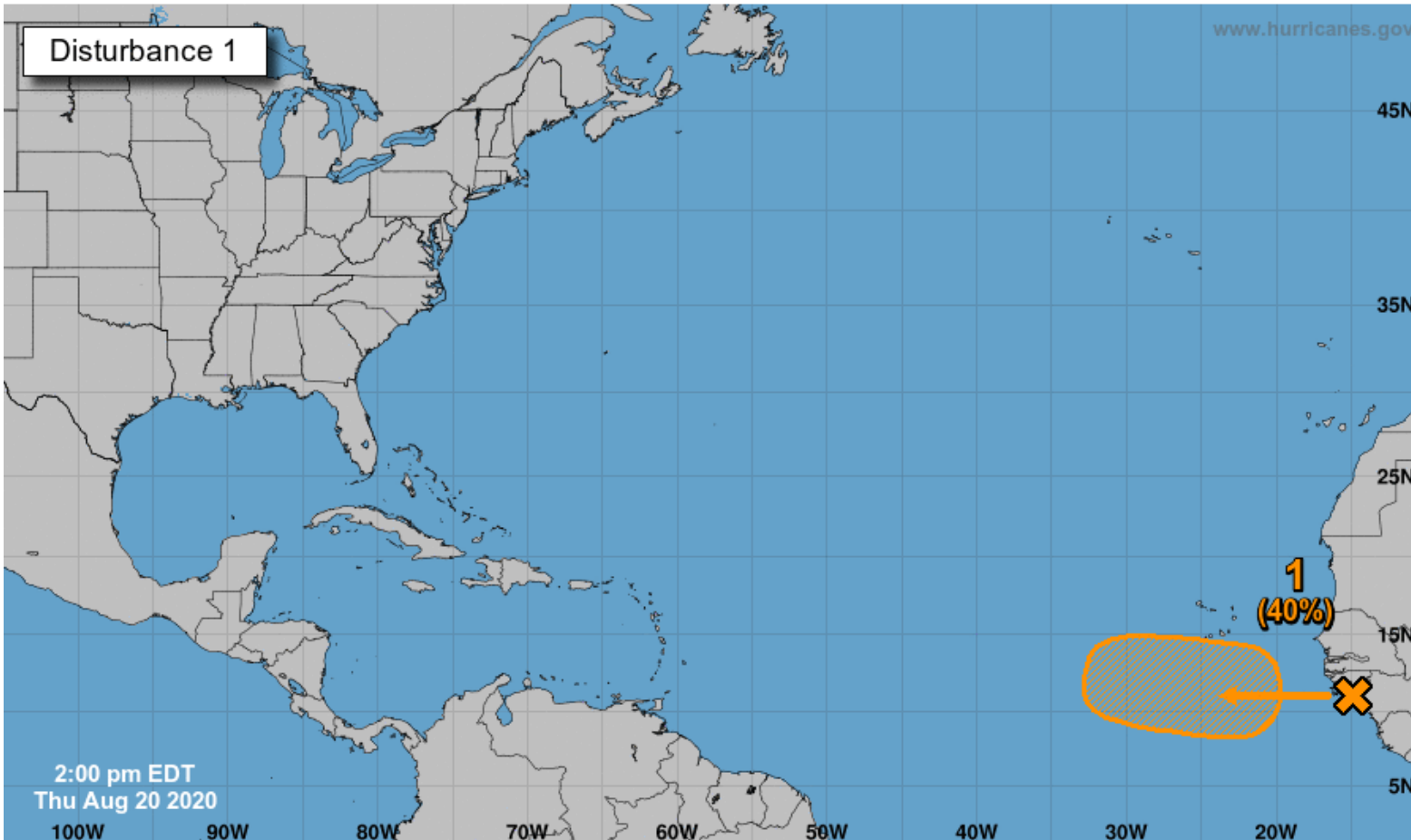
Five-Day Graphical Tropical Weather Outlook

National Hurricane Center Miami, Florida



www.hurricanes.gov

Disturbance 1



A tropical wave nearing the western Africa coast is producing disorganized showers and thunderstorms within a few hundred miles of the coastline.

This wave is expected to move over the far eastern tropical Atlantic on Friday, and some development is possible through the weekend while it moves west-northwestward at 15-20 mph across the eastern tropical Atlantic.

This system does not need to be monitored for impacts at this time.

***Formation chance through 48 hrs...low...20%**

***Formation chance through 5 days...medium...40%**

Current Disturbances and Five-Day Cyclone Formation Chance: < 40% 40-60% > 60%

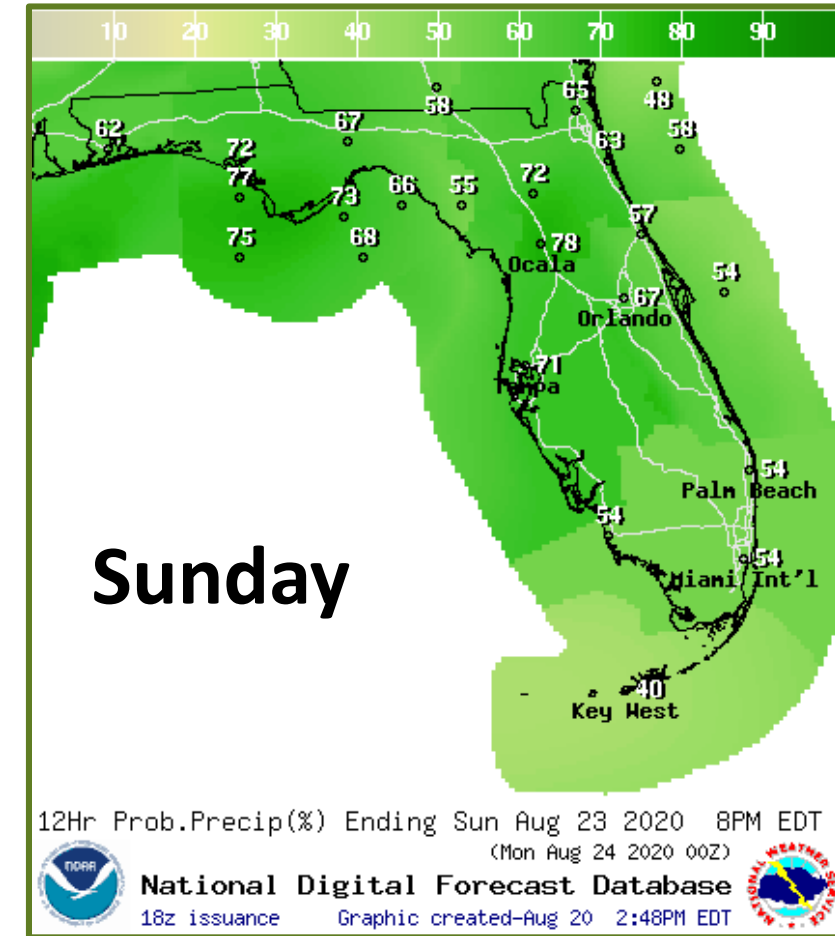
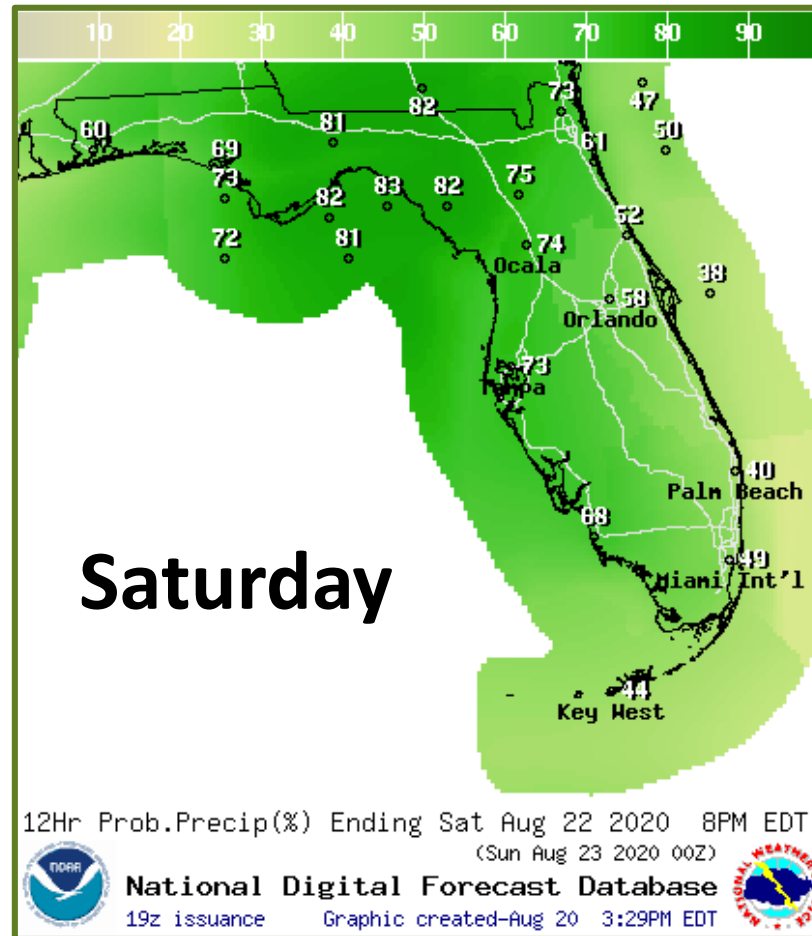
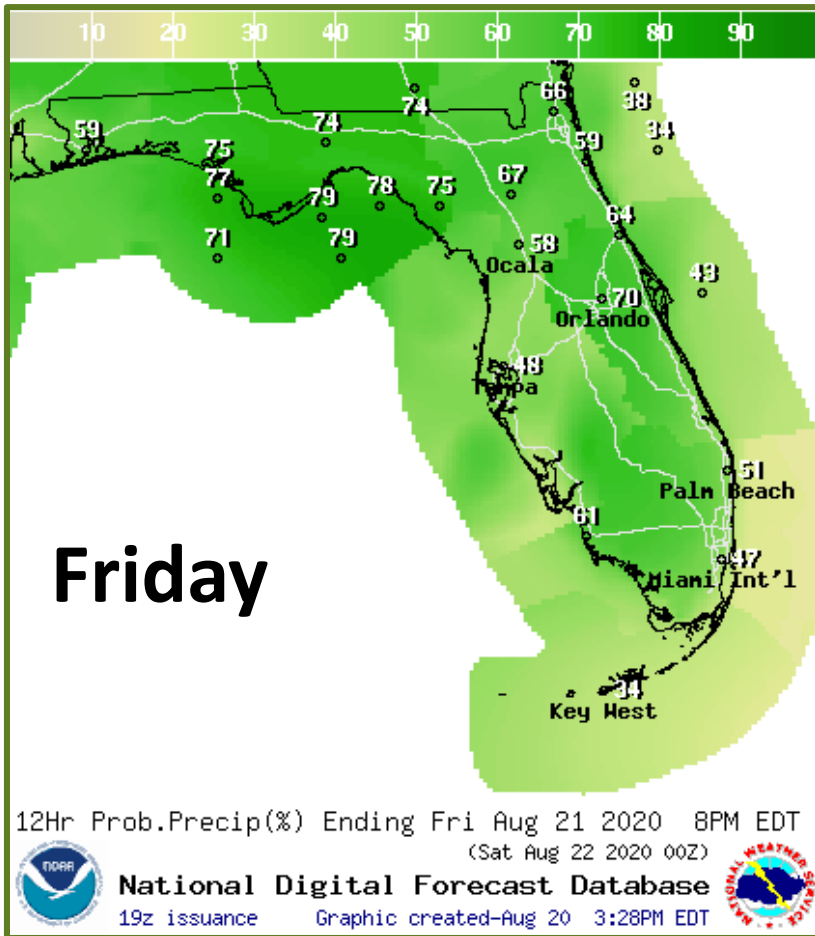
Tropical or Sub-Tropical Cyclone: Depression Storm Hurricane

Post-Tropical Cyclone or Remnants



Rain Chances Next 3 Days

****Unrelated to the Tropics****



High rain chances statewide! Multiple rounds of storms throughout the day and continuing into the overnight, especially along the Gulf Coast. Outer rain bands from TD 13 could approach South Florida late Sunday.



Severe Weather & Flood Threat

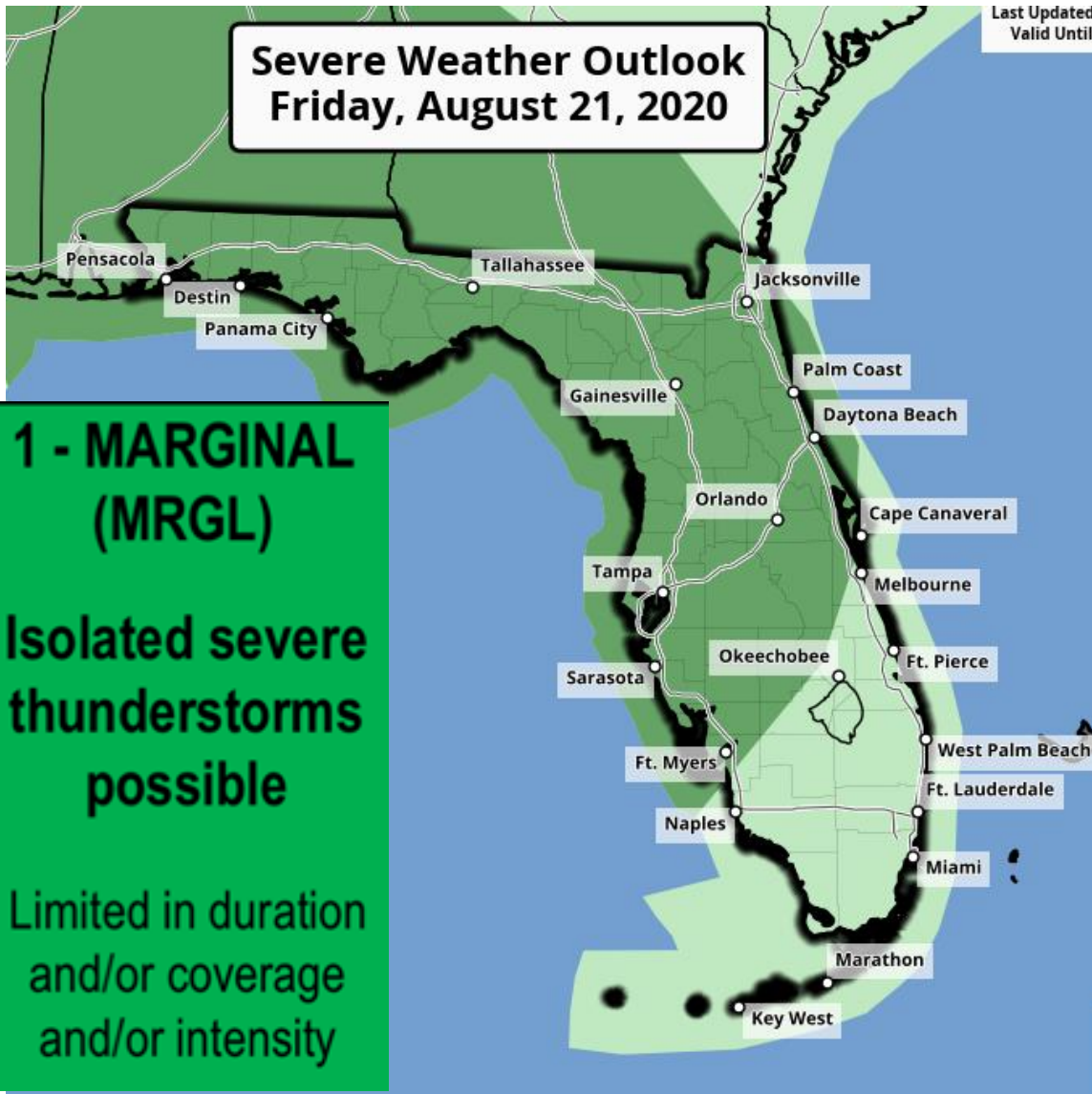
Severe Weather Outlook Friday, August 21, 2020

Last Updated:
Valid Until:

**1 - MARGINAL
(MRGL)**

**Isolated severe
thunderstorms
possible**

**Limited in duration
and/or coverage
and/or intensity**



Flash Flood Threat Next 3 Days

**MARGINAL
(MRGL)**

**Isolated flash
floods possible**

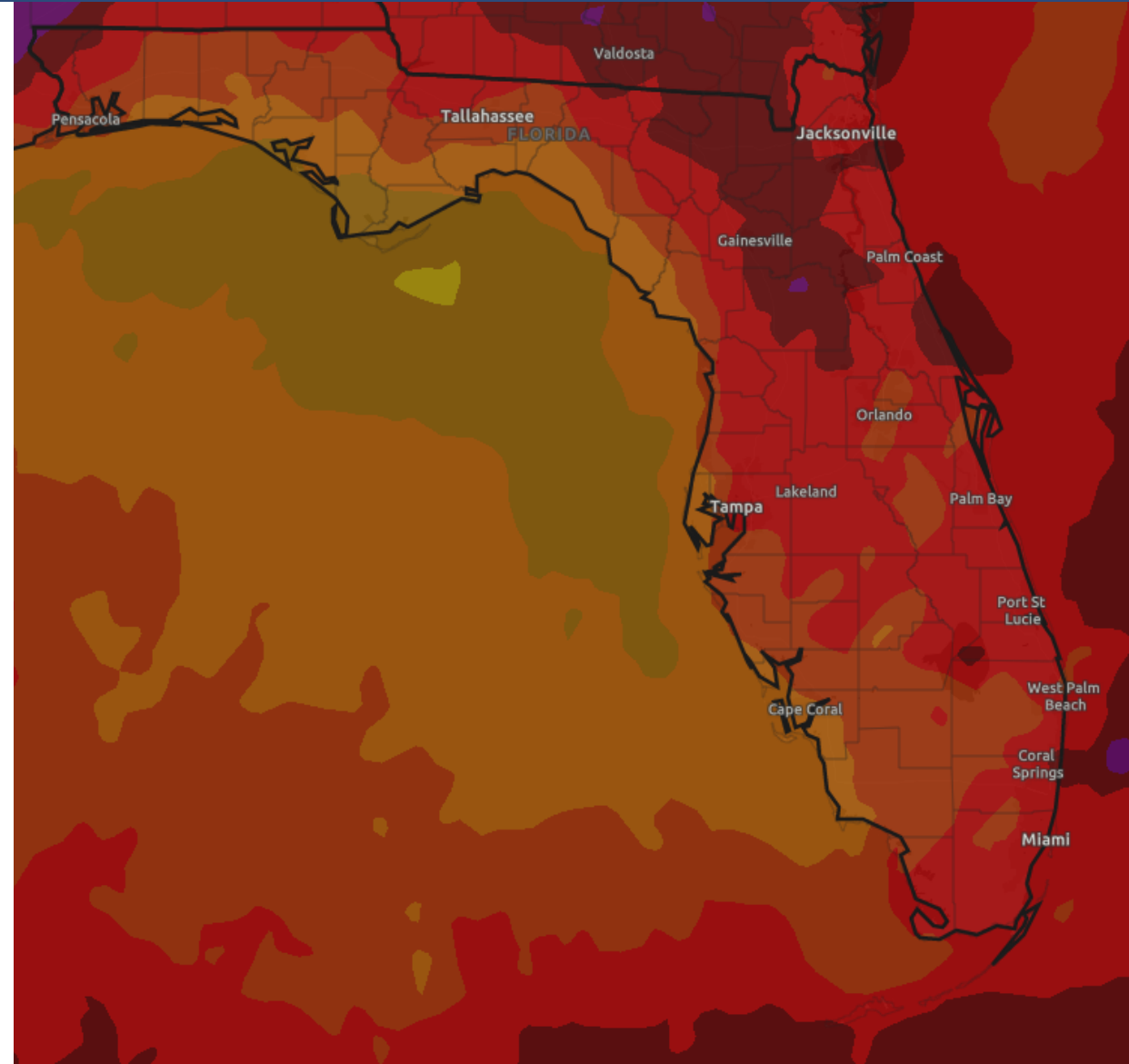
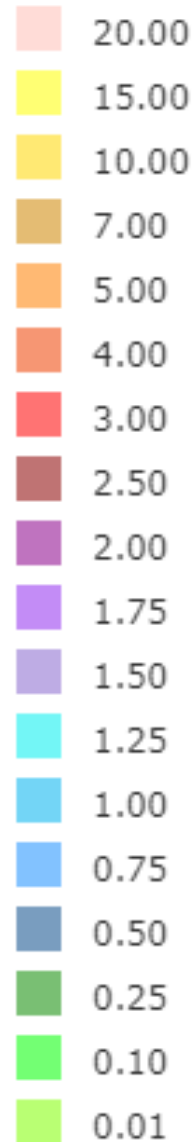
**Localized and
primarily affecting
places that can
experience rapid
runoff with heavy
rainfall.**





Forecast Rainfall Totals Next 7 Days

- A widespread 3-7" expected across the state this week
- Locally 7-10" especially along the Gulf Coast
- Storms will be very efficient rainfall producers, and could produce 2-4" of rain within an hour.
- There is an isolated flash flood threat each day across much of the state.





Overall Summary

Tropical Depression #13 – Central Atlantic

- Tropical Depression #13 is located about 615 miles east of the northern Leeward Islands, moving WNW at 21 mph..
- Maximum sustained winds are near 35 mph, and TD 13 is likely to become a tropical storm on Friday. TD 13 is forecast to become a hurricane by Monday.
- The center of TD 13 will likely pass near or over the Peninsula on Monday, then near the Panhandle or Big Bend on Tuesday or Wednesday.

Tropical Depression #14 – Central Caribbean

- The center of TD 14 is located about 155 miles east-southeast of Cabo Gracias a Dios on the Nicaragua/Honduras border, moving west at 18 mph.
- Maximum sustained winds are near 35 mph, and this system is expected to become a tropical storm later today or tonight.
- The center of TD 14 will likely make landfall in the next 24 hours in Nicaragua or Honduras, then in Yucatan Peninsula on Saturday, then along the northwestern or central US Gulf Coast on Tuesday.

Tropical Wave near the Coast of Africa

- A tropical wave moving off the coast of Africa may gradually develop later this week. The National Hurricane Center gives the system a 20% (low) chance of development over the next 48 hours and a 40% (medium) chance of development over the next 5 days.



Florida Summary

Florida Outlook:

- Tropical Depression #13 poses a direct threat to Florida.
- Tropical storm force winds are likely to begin by Monday morning along the East Coast and the Florida Keys, but may begin as early as Sunday night.
- Heavy rainfall is also expected. A widespread 3-7" of rainfall is expected over the next 7 days statewide, with localized totals of 7-10" possible.
- It remains too early to determine exact surge, tornado, and Lake Okeechobee impacts.
- Tropical Depression #14 may create swells across the Gulf Coast once it enters the Gulf, possibly in conjunction with TD #13.
- TD #14, if it moves far enough east, could have implications on TD #13, which may change impacts for the Panhandle and Big Bend.
- Dangerous rip currents expected statewide from both TD #13 and TD #14.
- No impacts are expected from the wave over Africa at this time.
- Unrelated to the tropical systems, a stalled cold front will bring high rain chances to the state this week, with widespread rainfall totals of 2-4" over the next 5 days. A localized flash flood and severe weather threat exists each afternoon.

The next briefing packet will be issued early Friday morning. For the latest information on the tropics, please visit the National Hurricane Center website at www.hurricanes.gov.



TROPICAL UPDATE



Created by:

Cameron Young, Assistant State Meteorologist

Cameron.Young@em.myflorida.com

State Meteorological Support Unit

Florida Division of Emergency Management

Users wishing to subscribe (approval pending) to this distribution list, register at:

https://public.govdelivery.com/accounts/FLDEM/subscriber/new?topic_id=SERT_Met_Tropics.

Other reports available for subscription are available at:

<https://public.govdelivery.com/accounts/FLDEM/subscriber/new?preferences=true>