



# TROPICAL UPDATE



11:00 AM EDT

Tuesday, August 25, 2020

Hurricane Laura

This update is intended for government and emergency response officials, and is provided for informational and situational awareness purposes only. Forecast conditions are subject to change based on a variety of environmental factors. For additional information, or for any life safety concerns with an active weather event please contact your County Emergency Management or Public Safety Office, local National Weather Service forecast office, or visit the National Hurricane Center website at [www.hurricanes.gov](http://www.hurricanes.gov).



# Atlantic Basin Satellite Image

Chance of development: — None — Low — Medium — High

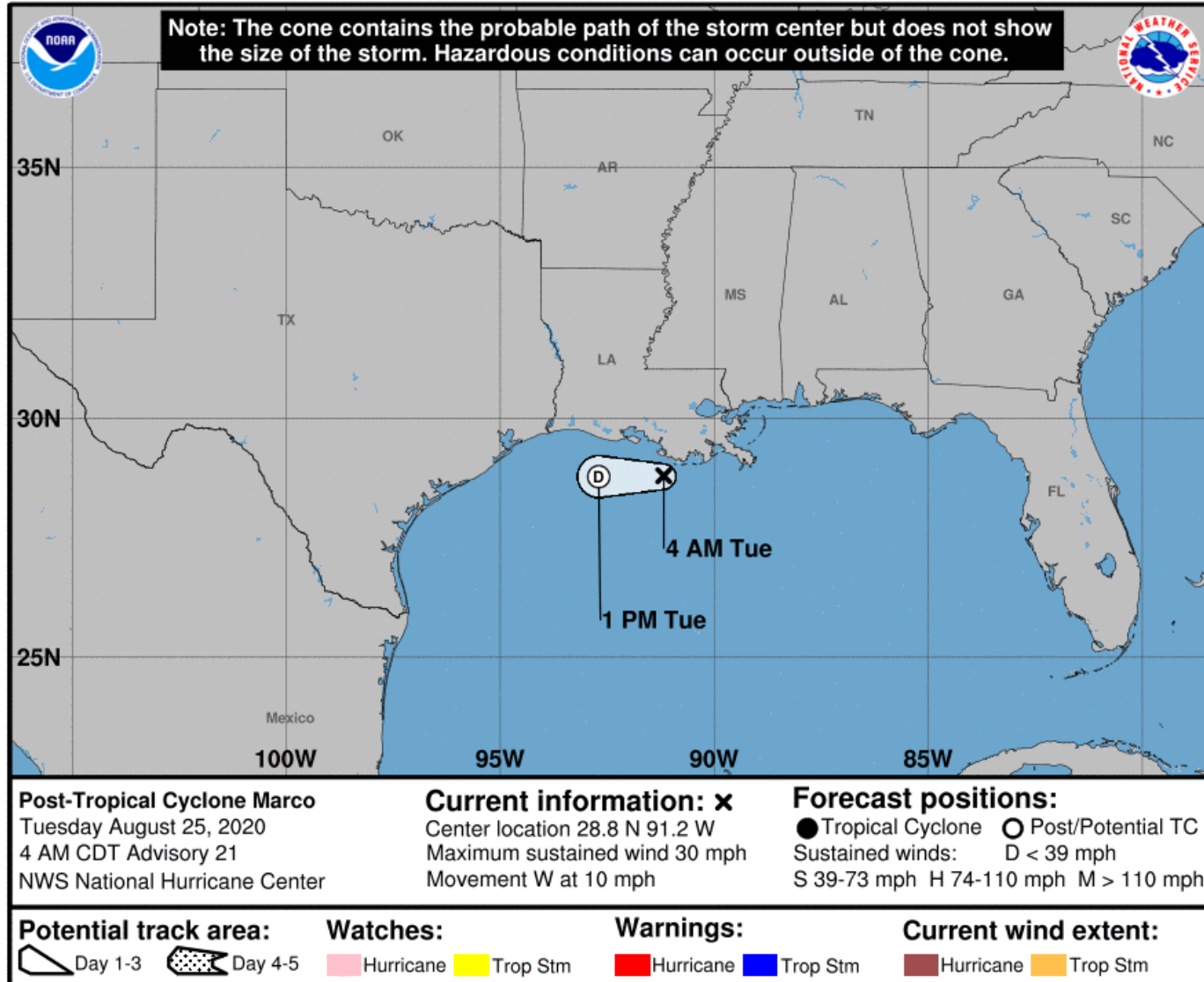






# Official Forecast Track

From the National Hurricane Center – Remnants of Marco

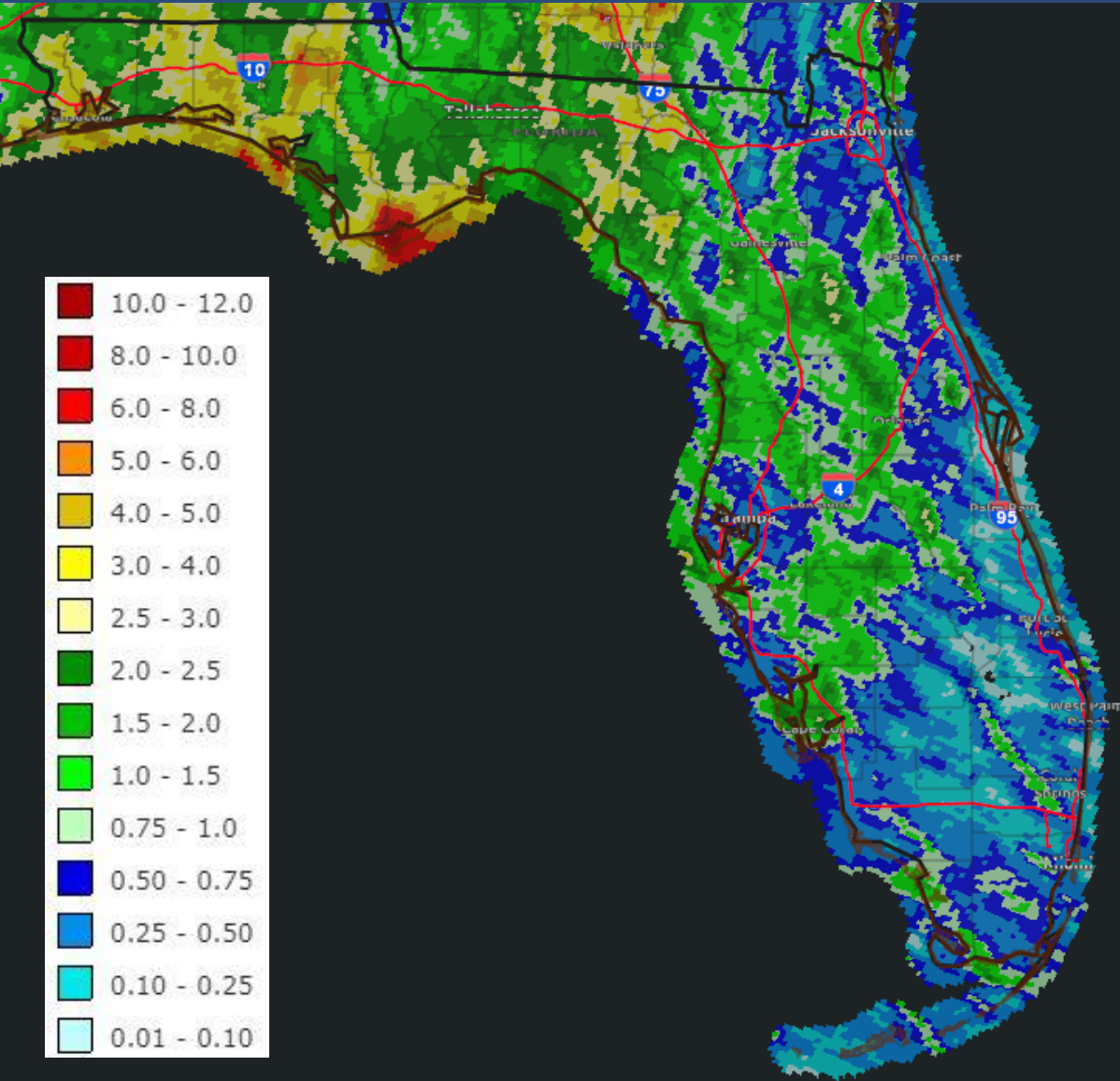


- Marco made landfall in far southeastern Louisiana yesterday with most of the impacts occurring in the Florida Panhandle, far away from the center.
- Marco dissipated overnight and the last advisory has been issued.
- All watches, warnings, and impacts to Florida have ended.



# Past Rainfall – Last 3 Days

## Observations/Impacts from Marco & Laura



### Laura:

- 69 mph gust at NWS Key West, ~11hrs of tropical storm force gusts
- 65 mph gust at Turkey Point
- Isolated Power Outages
- Minor Coastal Flooding Lower Keys
- <1" of rain

### Marco:

- Street Flooding in Panama City Beach, Bay County and Apalachicola, Franklin County
- 12.15" of rain in Apalachicola
- 7.21" of rain in Panama City Beach
- No tornadoes, isolated wind damage from thunderstorms Monday evening
- Minor Coastal Flooding, Rough Surf at Panhandle beaches



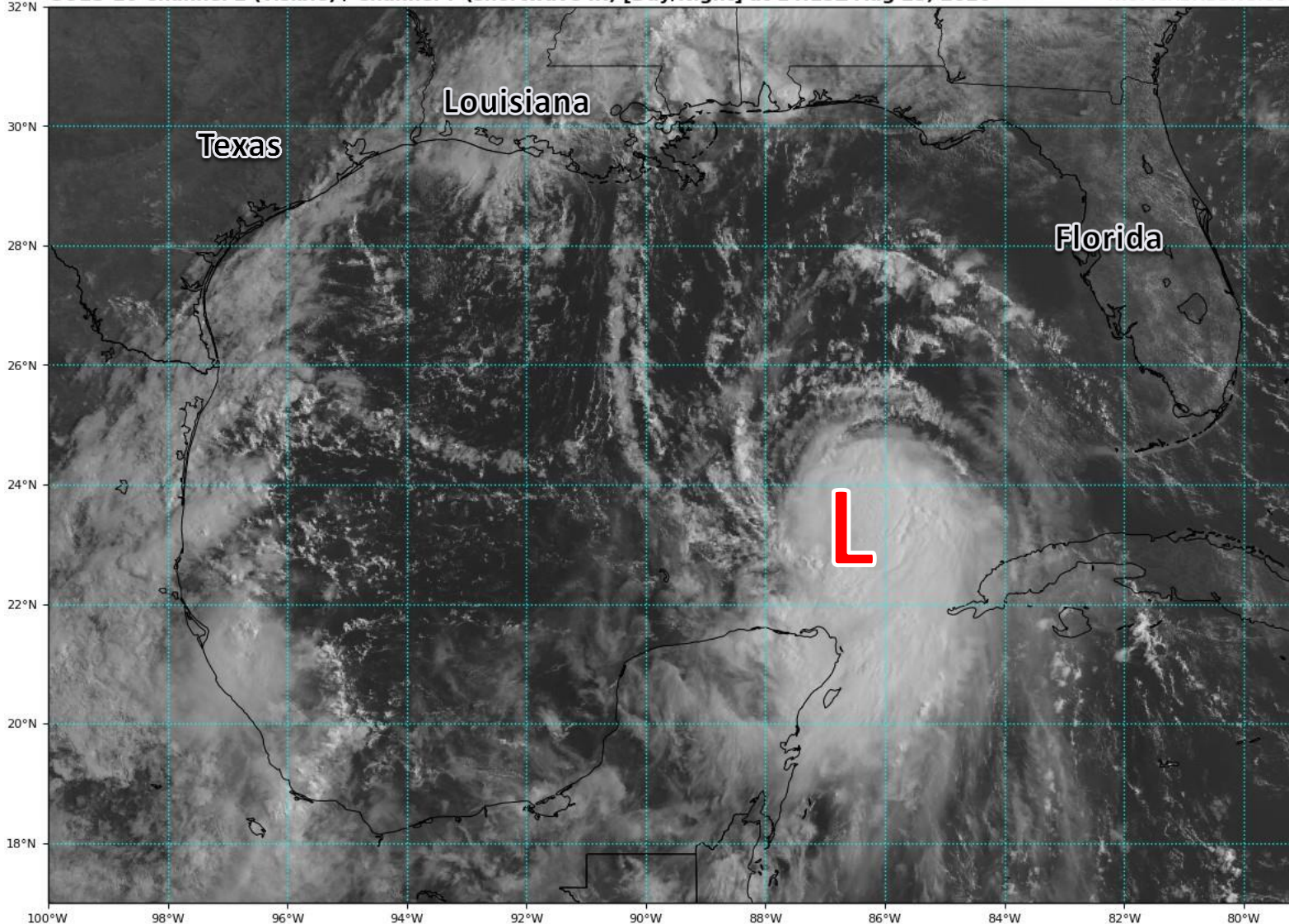


# Satellite Imagery

## Gulf of Mexico – Hurricane Laura

GOES-16 Channel 2 (visible) / Channel 7 (shortwave IR) [Day/Night] at 14:15Z Aug 25, 2020

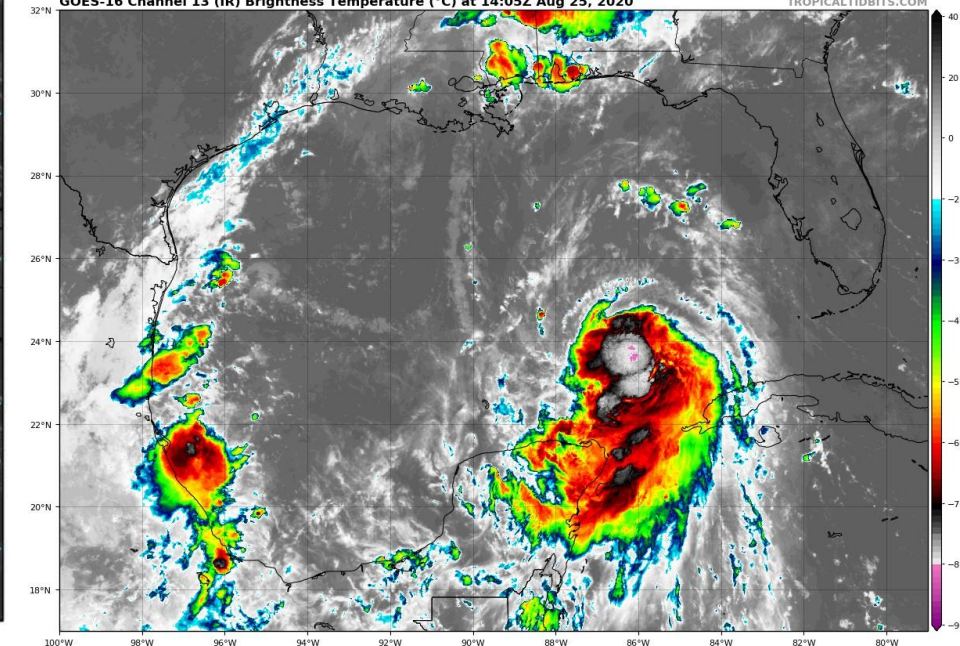
TROPICALTIDBITS.COM



Laura emerged off the western tip of Cuba overnight and is now tracking across the Gulf of Mexico. Laura continues to organize and become more symmetric, strengthening to a hurricane this morning.

GOES-16 Channel 13 (IR) Brightness Temperature (°C) at 14:05Z Aug 25, 2020

TROPICALTIDBITS.COM

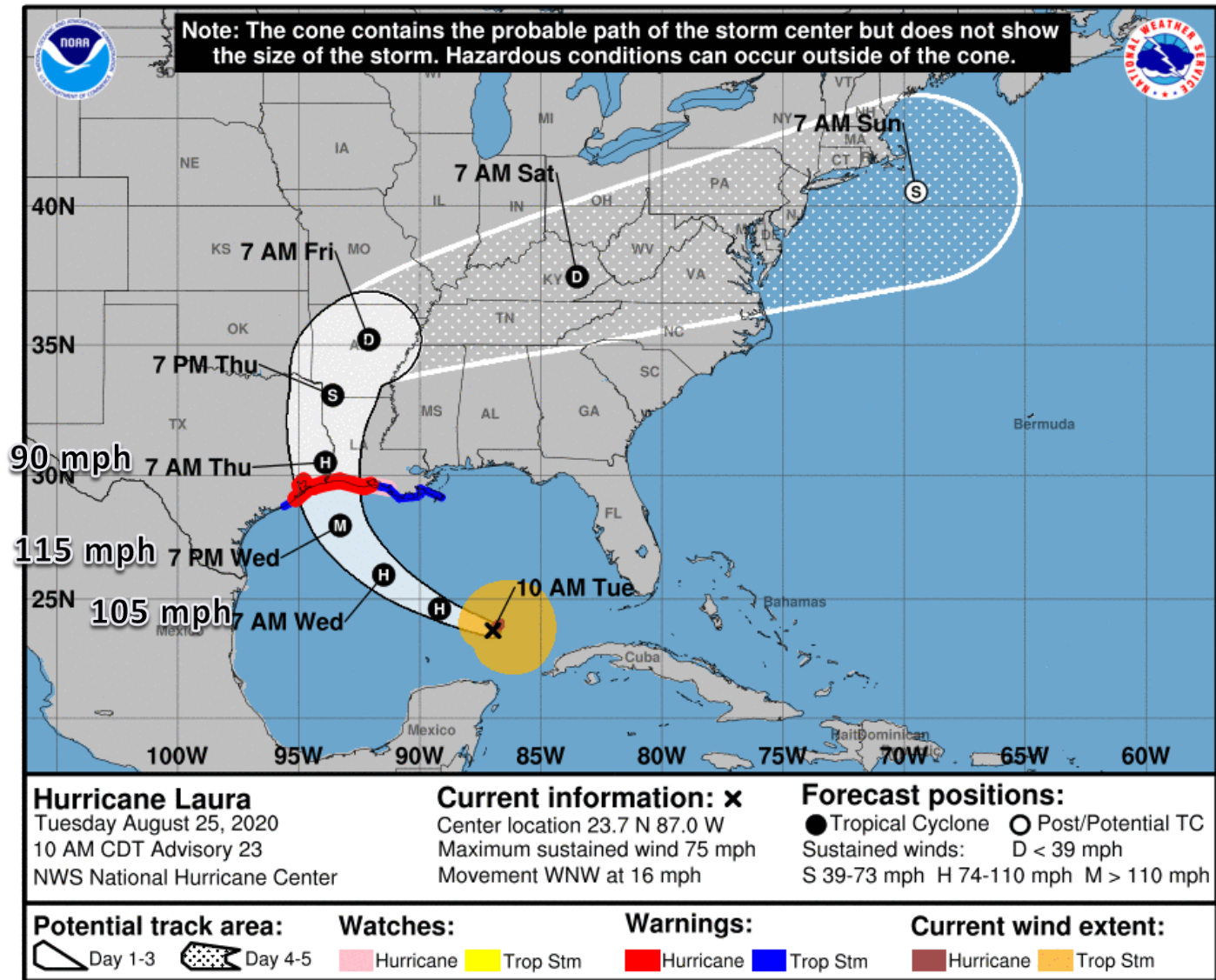






# Official Forecast Track

## From the National Hurricane Center – Hurricane Laura



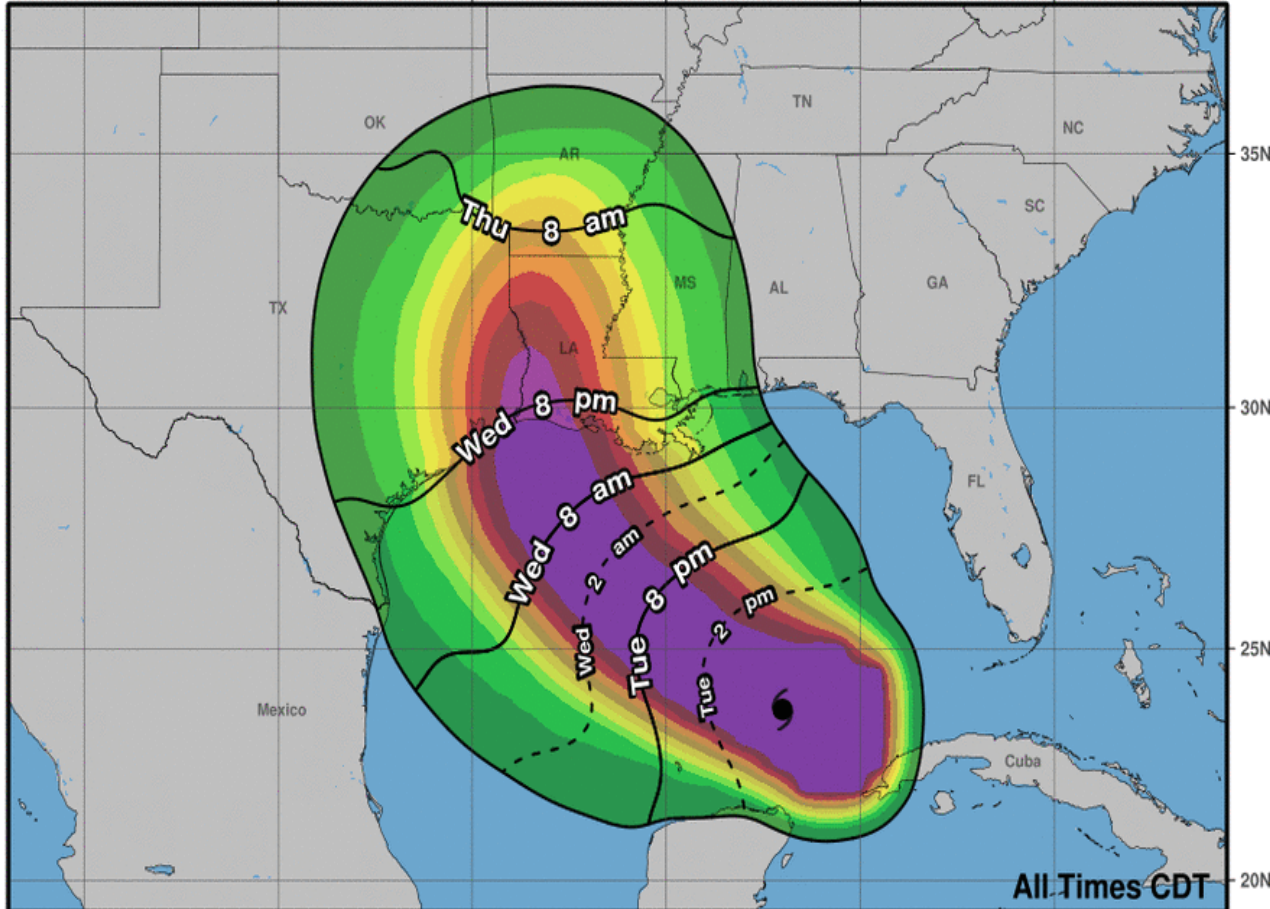
- Laura moved back over water last night and is now moving across the Gulf of Mexico, to the west-northwest at 16 mph.
- The center of Tropical Storm Laura is located about 620 miles southeast of Galveston, Texas, or about 300 miles southwest of Key West, Florida.
- Laura continues to strengthen, with Hurricane Hunters finding Laura a Category 1 Hurricane with maximum sustained winds at 75 mph.
- Gradual strengthening is possible over the next few days, with a period of rapid intensification possible tonight or tomorrow.
- A Major Category 3 or 4 hurricane is forecast to make landfall in eastern Texas or southwestern Louisiana late Wednesday night.
- Hurricane and Storm Surge warnings are in effect for Texas and Louisiana.



# Hurricane Laura: Wind Timing & Storm Surge Forecast

**MOST LIKELY** Time of Arrival of Tropical Storm Force Winds (>39 mph)

## 0-3 Day Most Likely Arrival Time of Tropical-Storm-Force Winds

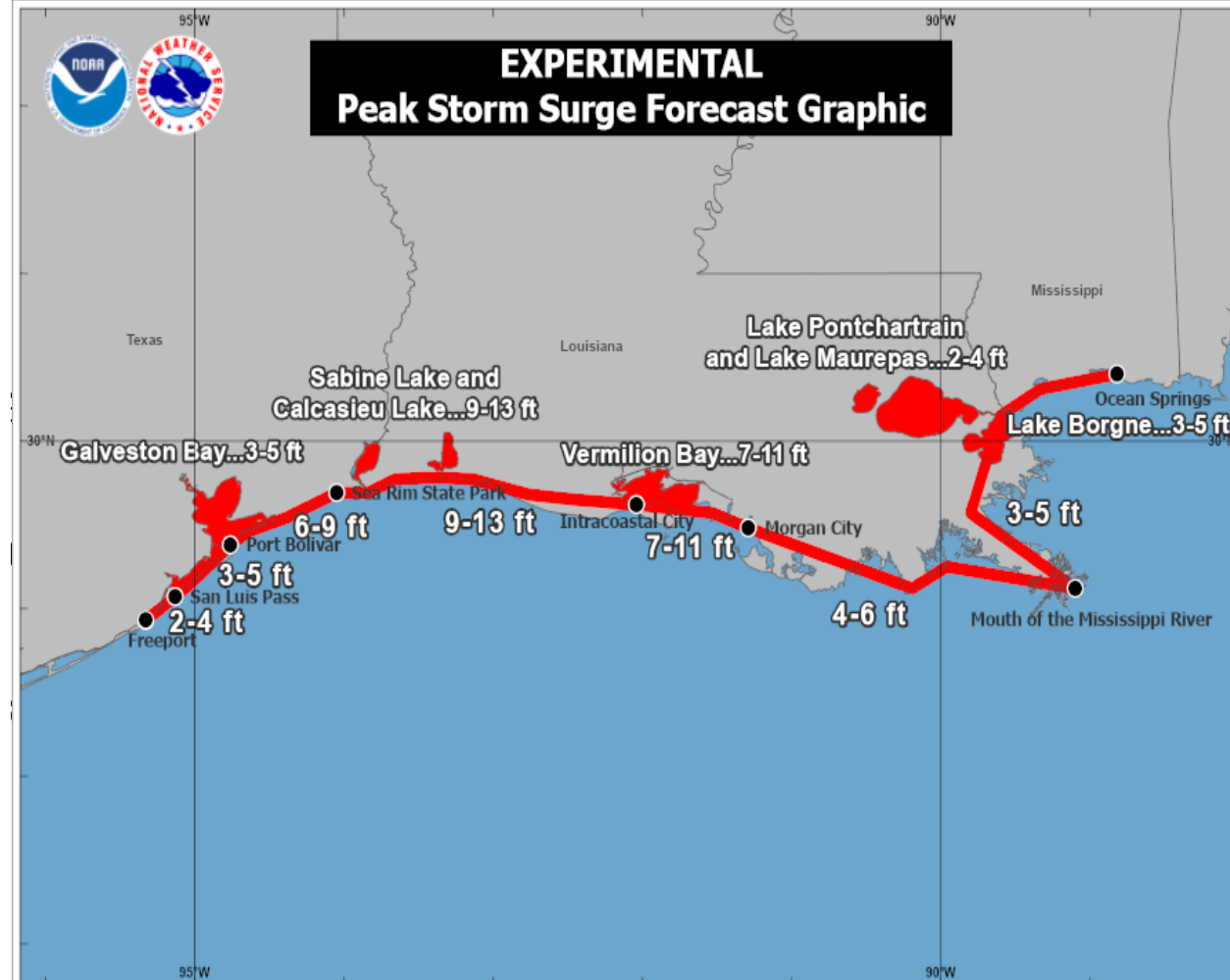


**Hurricane Laura**  
Tue. Aug. 25, 2020 10 am CDT  
Advisory 23

Storm Location & Wind Speed  
○ < 34 kt (39 mph)  
● 34-63 kt (39-73 mph)  
● ≥ 64 kt (74 mph)

3-day chance of receiving sustained 34+ kt (39+ mph) winds

5	10	20	30	40	50	60	70	80	90	100 %
---	----	----	----	----	----	----	----	----	----	-------



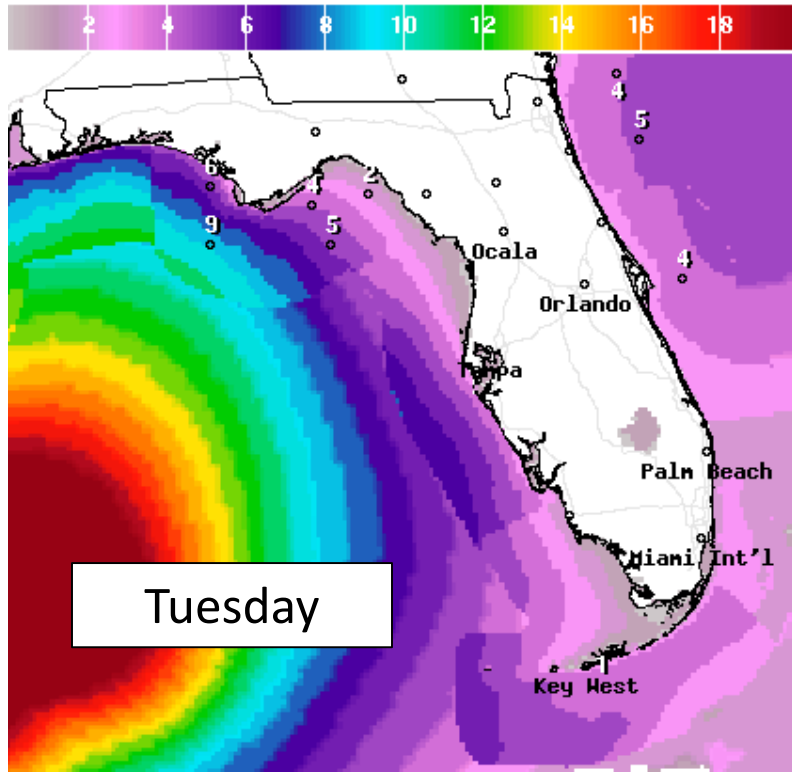
**Hurricane Laura**  
Tuesday August 25, 2020  
10 AM CDT Advisory 23  
NWS National Hurricane Center

The combination of a dangerous storm surge and the tide will cause normally dry areas near the coast to be flooded by rising waters moving inland from the shoreline. The water could reach the following heights above ground somewhere within the indicated areas if the peak surge occurs at the time of high tide. The deepest water will occur along the immediate coast near the landfall location, where the surge will be accompanied by large and destructive waves. Surge-related flooding depends on the relative timing of the surge and the tidal cycle, and can vary greatly over short distances.



# Forecast Wave Heights

## Mid-Week



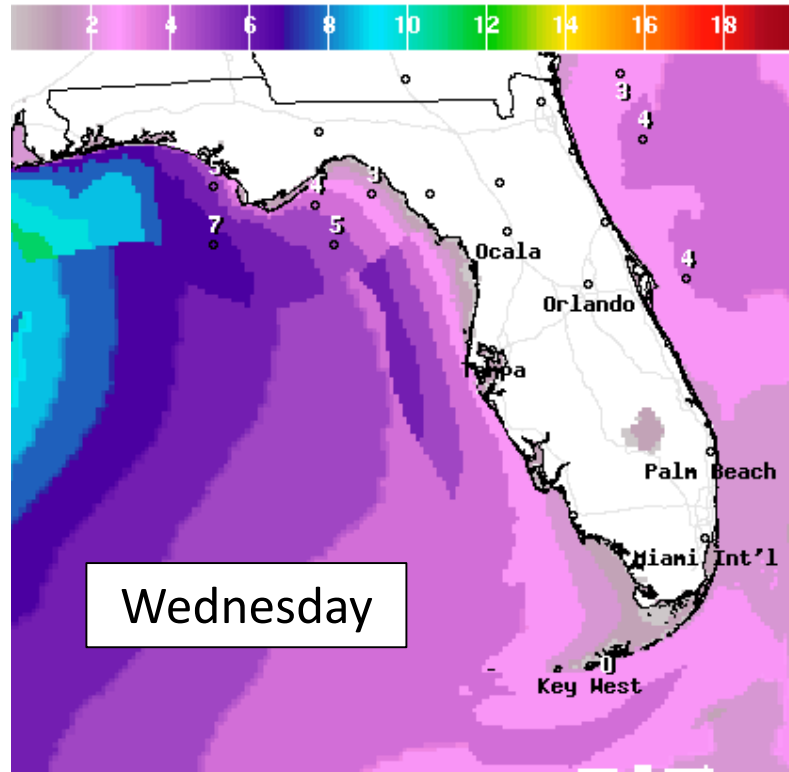
Wave Height(ft) Ending Tue Aug 25 2020 8PM EDT  
(Wed Aug 26 2020 00Z)



National Digital Forecast Database

14z issuance

Graphic created-Aug 25 10:14AM EDT



Wave Height(ft) Ending Wed Aug 26 2020 2PM EDT  
(Wed Aug 26 2020 18Z)



National Digital Forecast Database

14z issuance

Graphic created-Aug 25 10:15AM EDT



High Surf Advisory until  
Wednesday evening.

High surf of 5-8 feet is expected at Panhandle Beaches with 3-4 feet along the rest of the Gulf Coast. 2-4' waves are expected at Atlantic beaches. Minor beach erosion is likely in a few spots.





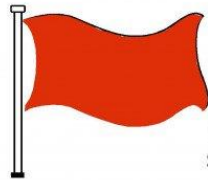
# Rip Current Outlook

Today

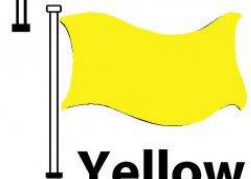
## BEACH FLAG WARNING SYSTEM



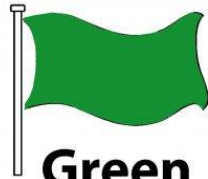
**Double Red**  
Water Closed to  
Public Use



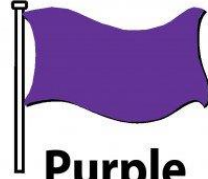
**Red**  
High Hazard  
(rough conditions,  
such as strong surf  
and or currents)



**Yellow**  
Medium Hazard  
(light surf and or  
currents)

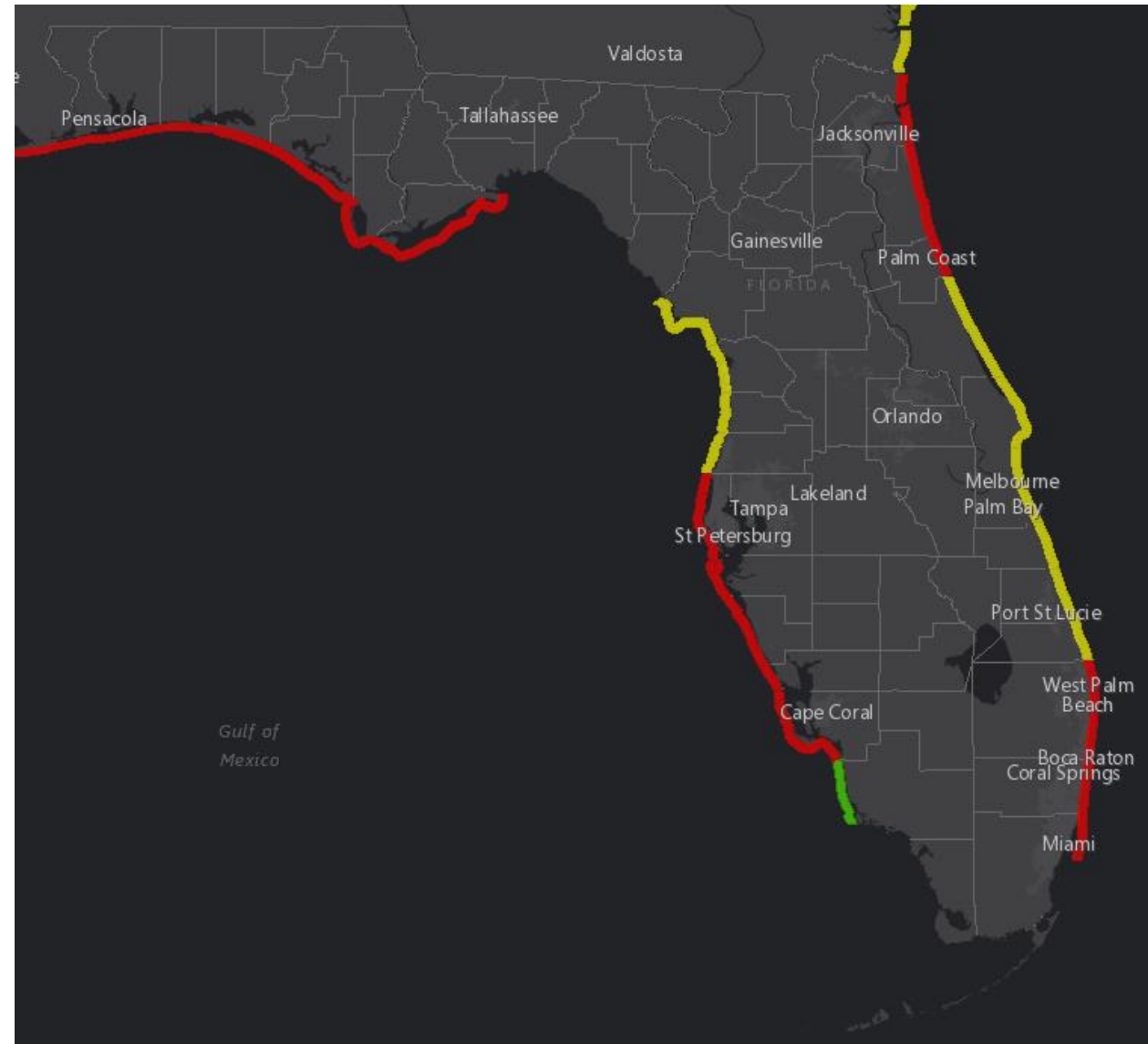


**Green**  
Low Hazard  
(calm conditions)



**Purple**  
Marine Pest  
(jellyfish, stingrays  
& dangerous fish)

Elevated rip current risk statewide, with the greatest threat in the Panhandle.





# Overall Summary

## Hurricane Laura

- Laura moved back over water last night and is now moving across the Gulf of Mexico, to the west-northwest at 16 mph.
- The center of Tropical Storm Laura is located about 620 miles southeast of Galveston, Texas, or about 300 miles southwest of Key West, Florida.
- Laura continues to strengthen, with Hurricane Hunters finding Laura a Category 1 Hurricane with maximum sustained winds at 75 mph.
- Gradual strengthening is possible over the next few days, with a period of rapid intensification possible tonight or tomorrow.
- A Major Category 3 or 4 hurricane is forecast to make landfall in eastern Texas or southwestern Louisiana late Wednesday night.
- Hurricane and Storm Surge warnings are in effect for Texas and Louisiana.

## Marco

- Marco made landfall in far southeastern Louisiana yesterday with most of the impacts occurring in the Florida Panhandle, far away from the center.
- Marco dissipated overnight and the last advisory has been issued.
- **All watches, warnings, and impacts to Florida have ended.**





# Florida Summary

## Florida Outlook:

- **Hurricane Laura:**
  - All direct impacts from Laura have ended and all watches and warnings have been canceled for the Florida Keys.
  - Nuisance coastal flooding at high tide over the next few days is possible in the Panhandle and Big Bend, with tides running about 1.5' above normal.
  - Dangerous rip currents and high surf are expected at all Florida beaches, but particularly in the Gulf. Minor beach erosion is expected to continue in the wake of Marco.
  - A High Surf Advisory is in effect for the Panhandle until Wednesday evening. Wave heights will be 5-8' along the coast of the Panhandle and 2-4' along the rest of the Gulf and Atlantic.
- **Marco:**
  - Despite pockets of heavy rainfall over the last couple of days in the Panhandle, river flooding is not expected.
  - All impacts from Marco have ended for Florida and all watches and warnings have been canceled/expired.

For more details on impacts to Texas and Louisiana from Hurricane Laura, please visit the National Hurricane Center, or the local Weather Service Offices at [www.weather.gov](http://www.weather.gov).

The next briefing packet will be issued Wednesday Morning with the 11 AM advisory. For the latest information on the tropics, please visit the National Hurricane Center website at [www.hurricanes.gov](http://www.hurricanes.gov).



# TROPICAL UPDATE



Created by:

Michael Spagnolo, Deputy State Meteorologist

[Michael.Spagnolo@em.myflorida.com](mailto:Michael.Spagnolo@em.myflorida.com)

State Meteorological Support Unit

Florida Division of Emergency Management

Users wishing to subscribe (approval pending) to this distribution list, register at:

[https://public.govdelivery.com/accounts/FLDEM/subscriber/new?topic\\_id=SERT\\_Met\\_Tropics](https://public.govdelivery.com/accounts/FLDEM/subscriber/new?topic_id=SERT_Met_Tropics).

Other reports available for subscription are available at:

<https://public.govdelivery.com/accounts/FLDEM/subscriber/new?preferences=true>