



# FEMA

## **Daily Operations Briefing**

**Friday, August 28, 2020**

**8:30 a.m. ET**

# National Current Operations and Monitoring



FEMA

## Significant Incidents or Threats:

- Severe thunderstorms possible – Lower Mississippi Valley to Tennessee Valley; Middle/Upper Mississippi Valleys to Great Lakes and Ohio Valley
- Heavy rain and flash flooding possible – Lower Mississippi Valley Ohio Valley and Southern Appalachians; Upper Mississippi Valley to Great Lakes and Ohio Valley
- California Wildfires
- COVID-19

## Tropical Activity:

- Atlantic:
  - Tropical Cyclone Laura (FINAL)
  - Disturbance 1: Low (30%)
  - Disturbance 2: Low (30%)
- Eastern Pacific:
  - Tropical Cyclone Hernan
  - Tropical Cyclone Iselle
- Central Pacific:
  - Disturbance 1: Low (20%)
- Western Pacific: No activity affecting U.S. interests

## Declaration Activity:

- Approved: Emergency Declaration – Arkansas
- FMAG approved for White River Fire, OR

# Tropical Outlook – Atlantic

## **Tropical Depression Laura – FINAL** (Advisory #34 as of 5:00 a.m. ET)

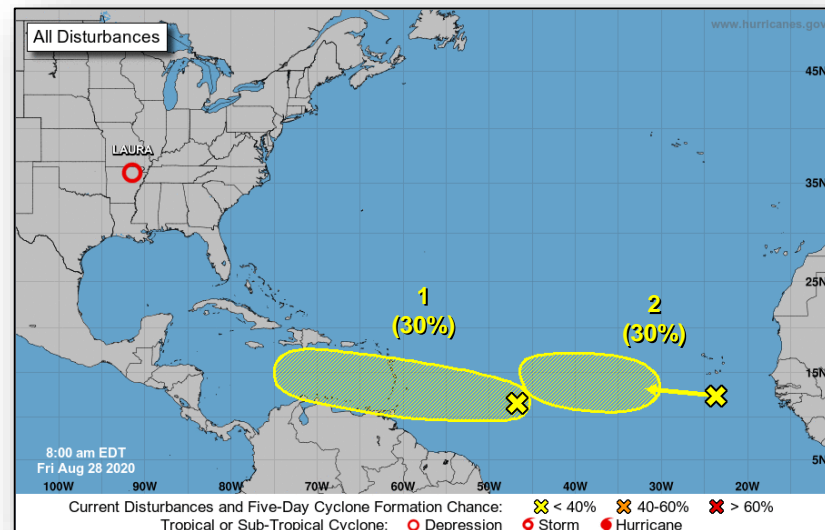
- 95 miles WNW of Memphis, TN
- Moving NE at 13 mph
- Maximum sustained winds 30 mph
- Strengthening expected late Saturday into Sunday as Laura moves into the northwest Atlantic
- Expected to produce additional rainfall totals of 1-3 inches with isolated totals of 5 inches through tonight; 1-2 inches with isolated maximum amounts of 3 inches on Saturday
- Threat of a few tornadoes expected to redevelop this afternoon into evening for parts of the mid-South and Tennessee Valley

## **Disturbance 1** (as of 8:00 a.m. ET)

- 900 miles E of Windward Islands
- Moving W at 15 mph
- Some gradual development possible during next several days
- Formation chance through 48 hours: Low (20%)
- Formation chance through 5 days: Low (30%)

## **Disturbance 2** (as of 8:00 a.m. ET)

- Located over the eastern Atlantic Ocean just west of Cabo Verde Islands
- Some development is possible early next week when it begins to move slowly W over the eastern and central tropical Atlantic
- Formation chance through 48 hours: Low (near 0%)
- Formation chance through 5 days: Low (30%)



# Tropical Outlook – Eastern Pacific



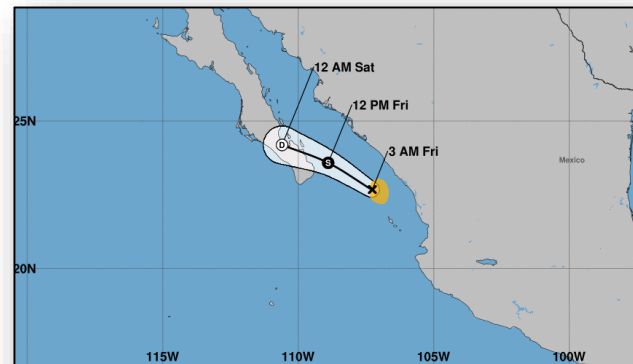
FEMA

## **Tropical Cyclone Hernan** (Advisory #9 as of 5:00 a.m. ET)

- 165 miles E of the southern tip of Baja California, Mexico
- Maximum sustained winds 40 mph
- Moving NW at 14 mph
- Forecast to dissipate on Saturday if not sooner
- Tropical storm force winds extend 45 miles

## **Tropical Cyclone Iselle** (Advisory #8 as of 5:00 a.m. ET)

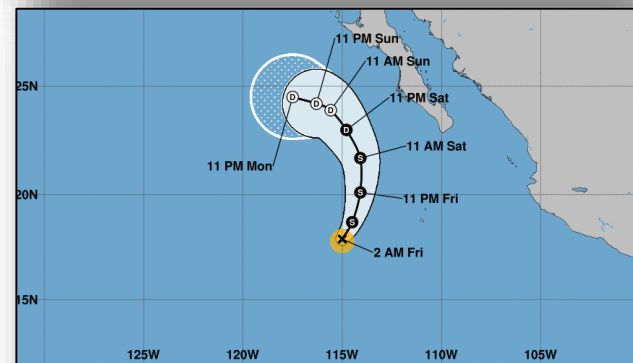
- 480 miles SW of the southern tip of Baja California, Mexico
- Maximum sustained winds 60 mph
- Moving NE at 5 mph
- Gradual weakening should begin tonight
- Tropical storm force winds extend 45 miles



**Tropical Storm Hernan**  
Friday August 28, 2020  
3 AM MDT Advisory 9  
NWS National Hurricane Center

**Current information: x**  
Center location 22.7 N 107.3 W  
Maximum sustained wind 40 mph  
Movement NW at 14 mph

**Forecast positions:**  
● Tropical Cyclone ○ Post/Potential TC  
Sustained winds: D < 39 mph  
S 39-73 mph H 74-110 mph M > 110 mph



**Tropical Storm Iselle**  
Friday August 28, 2020  
2 AM PDT Advisory 8  
NWS National Hurricane Center

**Current information: x**  
Center location 17.9 N 115.0 W  
Maximum sustained wind 60 mph  
Movement NE at 5 mph

**Forecast positions:**  
● Tropical Cyclone ○ Post/Potential TC  
Sustained winds: D < 39 mph  
S 39-73 mph H 74-110 mph M > 110 mph

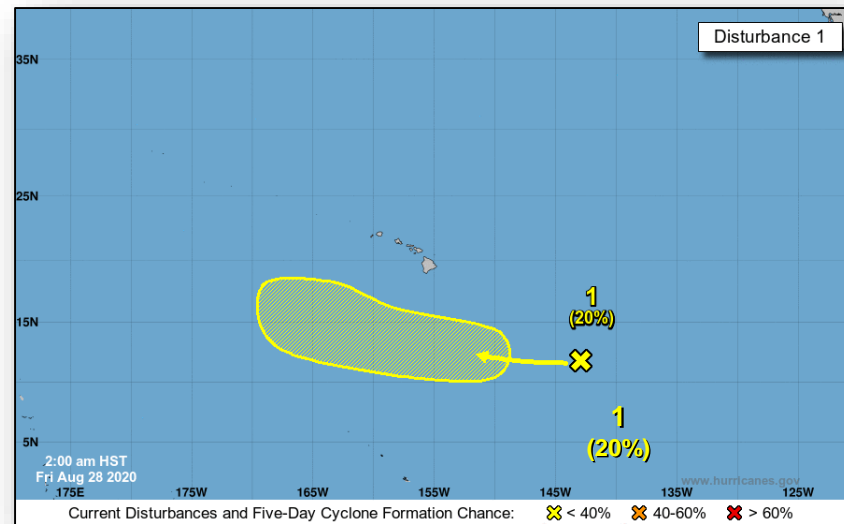
# Tropical Outlook – Central Pacific



FEMA

## **Disturbance 1** (as of 2:00 a.m. ET)

- Located 1,000 miles SE of Hilo, HI
- Moving slowly W
- Conditions appear somewhat conducive for gradual development over the next several days
- Formation chance through 48 hours: Low (near 0%)
- Formation chance through 5 days: Low (20%)



# Tropical Cyclone Laura – Response / Recovery



FEMA

## Situation:

Tropical Depression Laura is located 95 miles WNW of Memphis, TN.  
Moving NE at 13 mph.

## Lifeline Impacts:

Safety and Security (FEMA NRCC SLB, as of 6:00 a.m. ET, Aug 28)

- LA: 18 parishes under mandatory/voluntary evacuations

Food, Water, Shelter (Spot Report: RVI, as of 3:39 a.m. ET, Aug 28)

- TX: Salvation Army to serve 12.5k meals daily, beginning today
- Shelters - combined congregate and non-congregate:
  - TX: 9 shelters and 3,133 hotel rooms with 8,463 occupants; LA: 24 shelters (includes hotels) with 2,609 occupants
  - LA: 2,609 occupants statewide

## Health and Medical

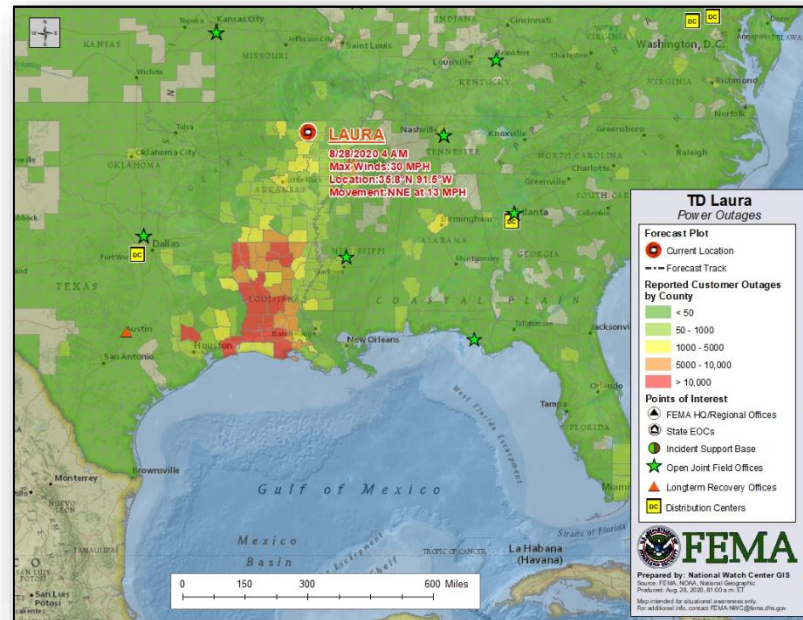
- LA: 3 confirmed fatalities
- LA: 23 (+2) hospitals sheltering in place; 7 closed, 9 (+4) evacuated; 11 (+3) nursing homes evacuated
  - 49 hospitals on generator power and/or without water; evacuations ongoing
- TX: 7 (+3) hospitals evacuated; 20 (-45) nursing homes evacuated

## Energy

- Customers without power: (Eagle I as of 6:30 a.m. ET Aug 28)
  - LA: 512k (-81k) (24%)
  - TX: 188k (-56k) (2%)
  - AR: 42k (3%)

## Transportation

- LA: USACE ready to begin port assessments
- LA: I-10 westbound closed due to I-10 bridge damage; I-10 cannot reopen until bridge is inspected



## Hazardous Material

- Fire at Bio-labs, near Lake Charles, LA causing a chemical smoke plume (100k lbs. chlorine); shelter in place order
  - IMAAC activated for modeling at the request of the National Weather Service

# Tropical Cyclone Laura – Response / Recovery



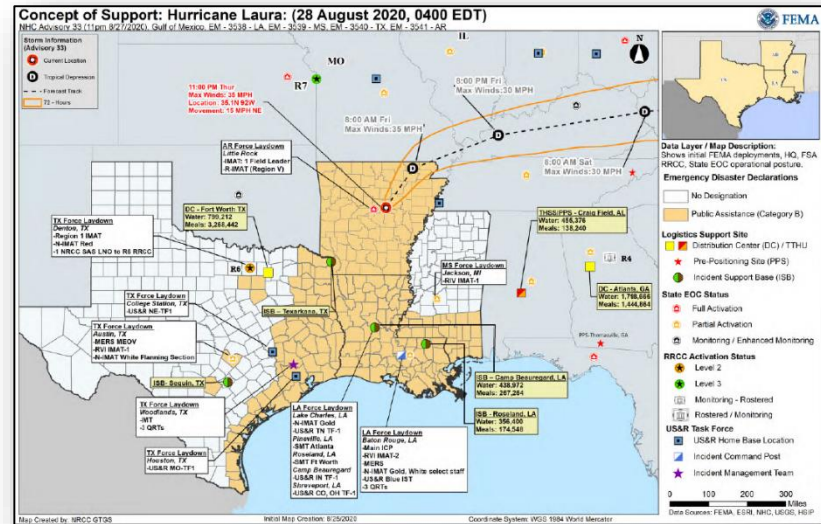
FEMA

## State/Local Preparations/Response:

- MS, LA, & TX EOCs at Partial Activation; State of Emergency declared
- TX: Governor mobilized National Guard
- TX & LA declared Public Health Emergencies
- LA: Preparing request for Major Disaster Dec as of 8/27

## Federal Preparations / Response:

- NRCC at Level I, 24/7
  - N-IMAT Gold deployed to Lake Charles, LA; N-IMAT Red deployed to Denton, TX
- Region I IMAT deployed to TX
- Region II RRCC at Level III; IMAT deployed to USVI
- Region IV RRCC Rostered
  - IMAT-1 demobilizing from MS
  - LNO providing support to MS; LNO providing support to Tribal Nations
- Region V IMAT deployed to AR
- Region VI RRCC at Level II with select ESFs
  - IMAT-1 deployed to Austin, TX; IMAT-2 deployed to Baton Rouge, LA
- Logistics HQ: SMT Atlanta deployed to Camp Beauregard, LA, SMT Fort Worth deployed to Roseland, LA, National ISB Team deployed to Craig Field, AL
- MERS deployed to PR, Baton Rouge, LA, and Austin, TX
  - Additional MERS assets pre-staged for post storm support in LA
  - Denver MERS enroute to Denton, TX and Lake Charles, LA
- Emergency Declarations approved for PR, LA, MS, TX and AR
- USCG staged air and watercrafts in AL and LA
- USACE deploying teams to LA & TX



- US&R deployed to LA: TN-TF1, IN-TF-1, CO-TF1 & OH-TF1 and Blue IST
  - Federal Search and Rescue Coordination Group activated



# COVID-19 Update



**Situation:** Upward trajectory in COVID-19 case count continues across 5 (+1) jurisdictions, with 4 (+2) jurisdictions in a plateau status, and 46 (-4) jurisdictions on a downward trajectory. 21,935 (-689) Federal employees deployed / activated; 1,922 (-75) FEMA employees deployed.

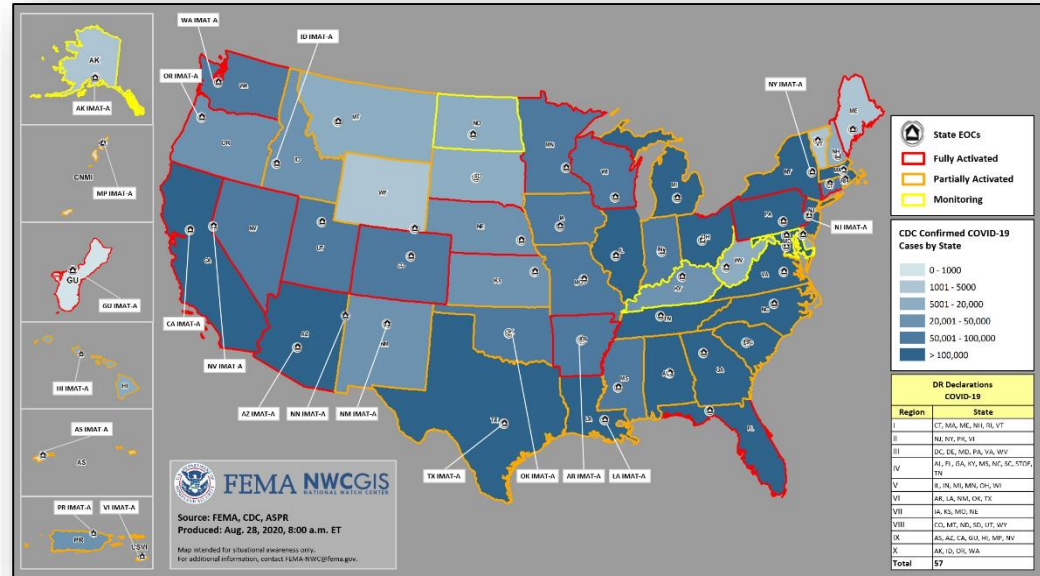
Nationwide Testing: 80,664,943 (+1,052,961) cumulative as of Aug 27

COVID-19 positive cases continue to increase globally (CDC COVID-19 update as of Aug 27)

- Confirmed Cases of COVID-19
  - United States: 5,799,046 (+46,393)
  - Worldwide: 24,021,218 (+267,670)
- Deaths caused by COVID-19
  - United States: 178,998 (+1,239)
  - Worldwide: 821,462 (+6,424)

## Response:

- NRCC at Level I
- Region VI RRCC is at Level II
- Regions I, II, III, V, & X RRCCs at Level III
- Regions IV, VII, VIII, & IX RRCCs are rostered
- Regions VII, VIII & IX COVID-19 response being worked from the Virtual JFO
- NWC, all RWCs, and MOCs are monitoring



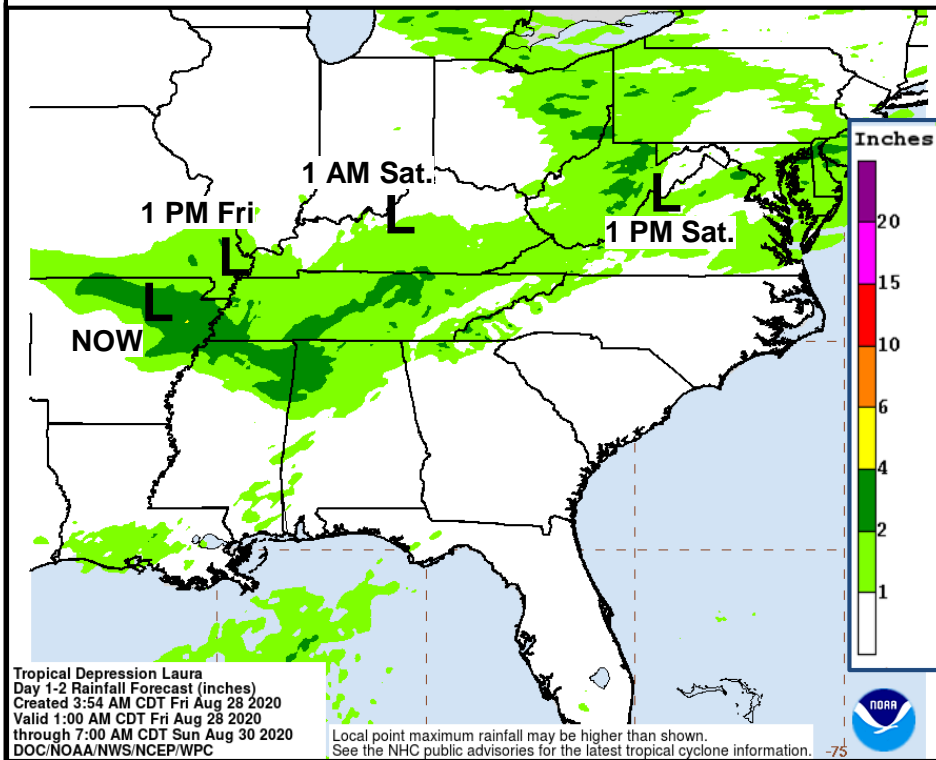


# Laura Rainfall Forecast and Excessive Rainfall Outlooks

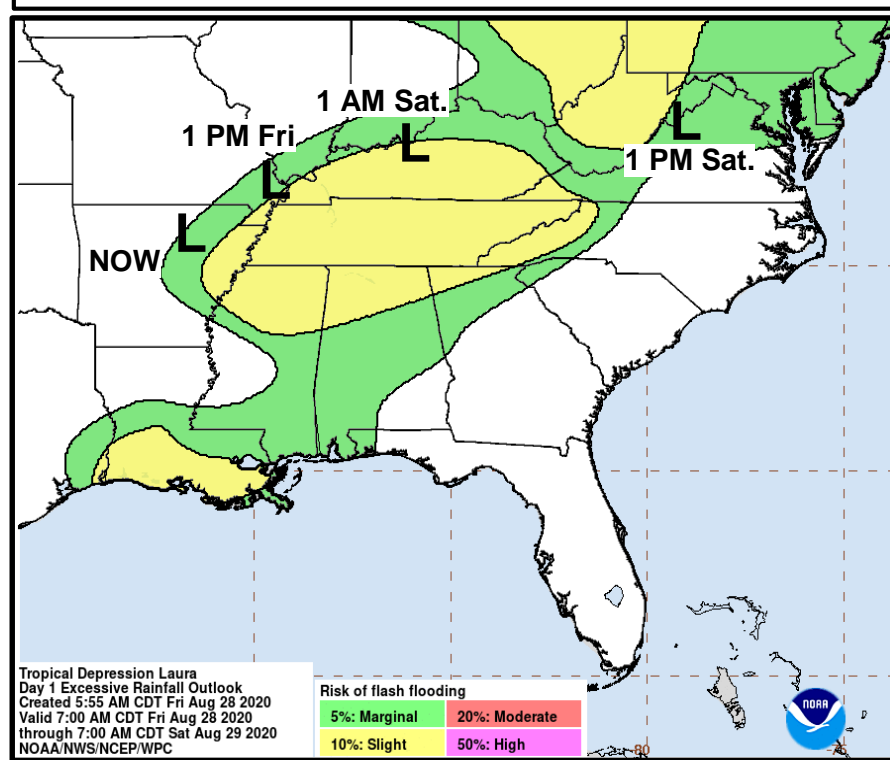


FEMA

2-Day Rainfall Forecast Through Early Sunday



Flash Flooding Risk Friday – Saturday



**WEATHER PREDICTION CENTER**  
NATIONAL OCEANIC AND ATMOSPHERIC ADMINISTRATION

NWS Leadership Briefing | WPC Forecasts for Laura  
August 25, 2020



# Flood Hazard Outlook (Prototype)

## Includes General Flash and River Flood Hazards

NWC National Water Center

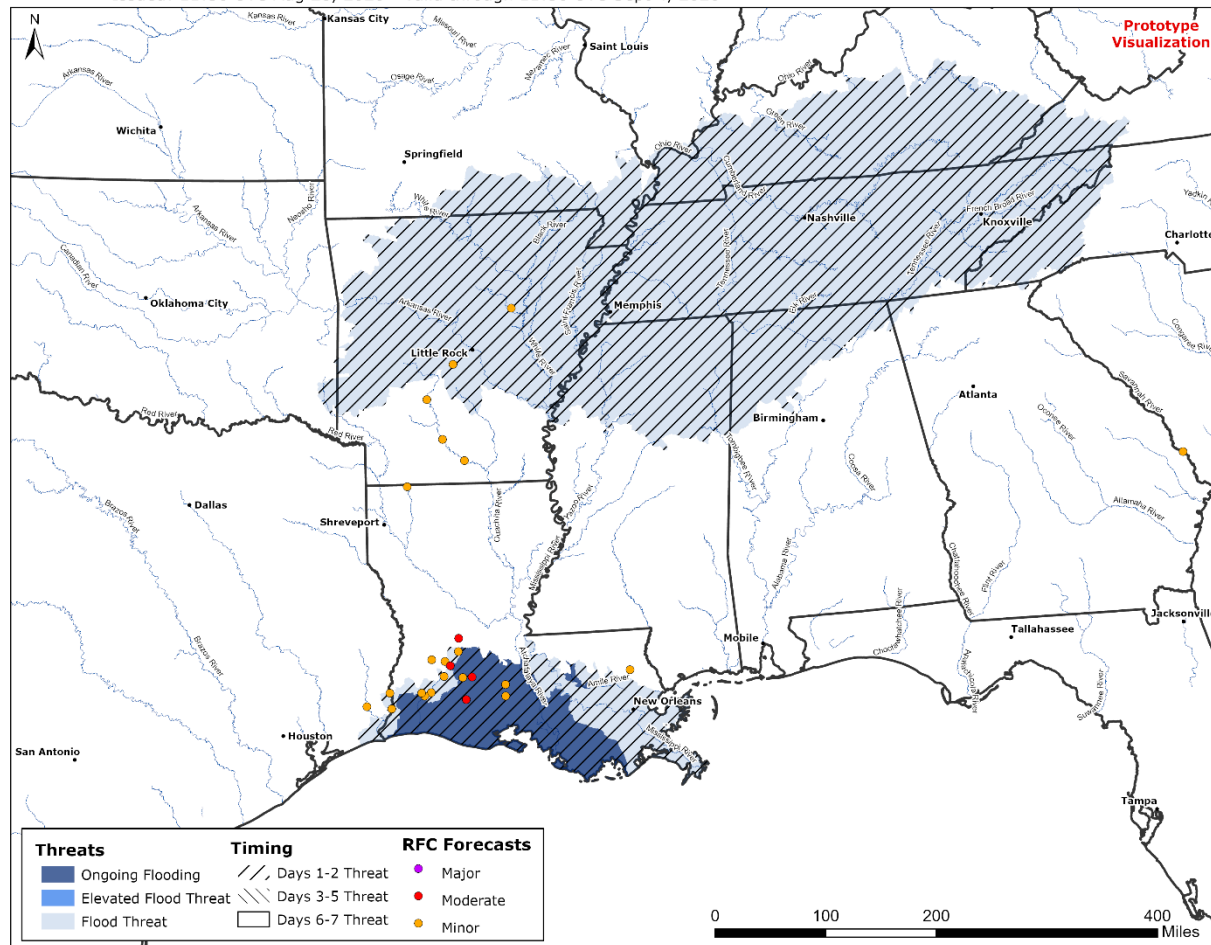


Issued: 11:30 UTC Aug 28, 2020 - Valid through 11:30 UTC Sept 4, 2020

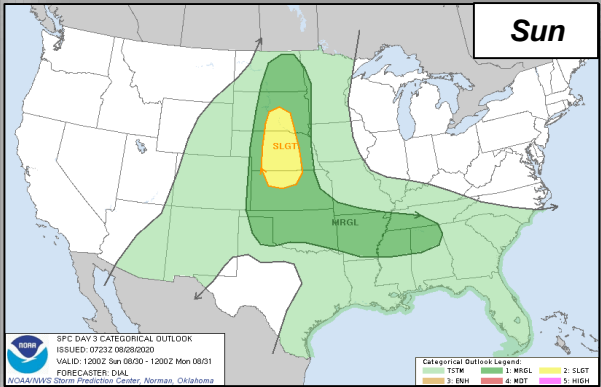
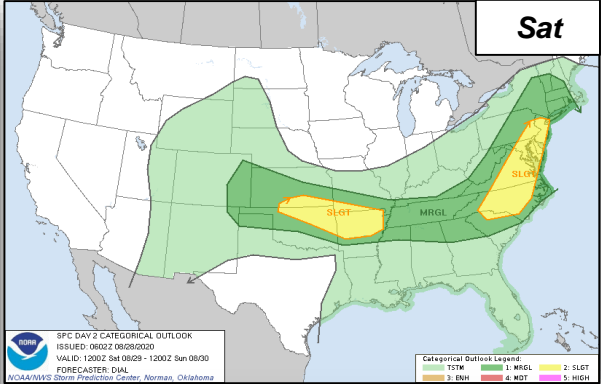
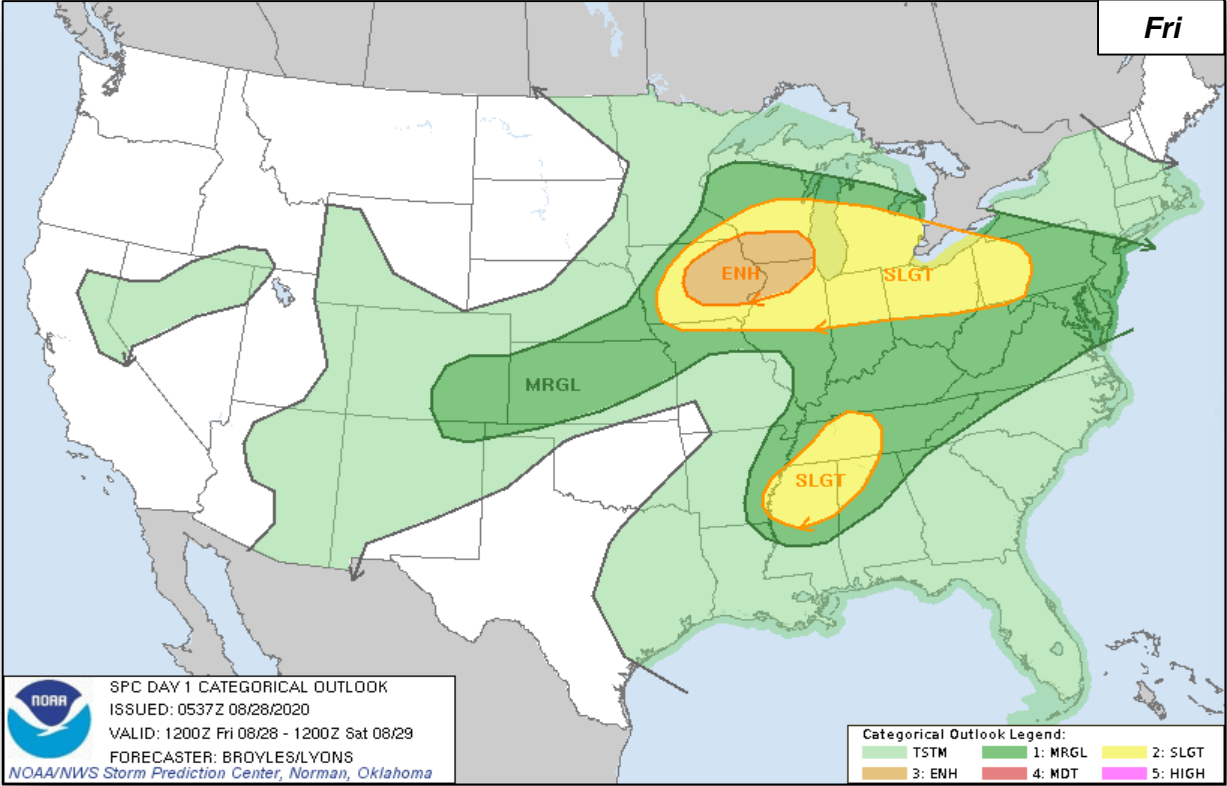
### Flood Hazard Messages (associated with Tropical Depression Laura)

- Saltwater flooding will continue on the coastal rivers of Louisiana where storm surge pushed over land and up the rivers. As freshwater flows into these regions, flooding will continue into next week.
- Today into Saturday, as Laura's remnants continue to move east-northeasterly, additional rainfall of 1 to 3 inches, with isolated 5 inches, is expected across portions of the mid-Mississippi, Tennessee and lower Ohio Valleys, and the Mid-Atlantic States. This rainfall will result in isolated flash and urban flooding, small streams and creeks to overflow their banks, and minor to moderate river flooding; however, widespread river flooding is not anticipated at this time.
- Rainfall bands will continue to feed up across portions of southern Louisiana, northwest Mississippi and Alabama today bringing localized rainfall amounts of 1 to 4 inches. This rainfall may lead to localized flash and urban flooding and rapid rises on small streams.
- In northern Arkansas and far southern Missouri, additional rainfall of up to 2 inches Saturday night, not associated with Laura, could result in isolated flash and urban flooding and further elevate river flooding.

**Disclaimer:** This graphic is intended to provide a general flash and river flood hazard outlook. It is not intended to depict coastal flood risk due to storm surge. Please refer to the detailed products issued by local National Weather Service offices for official forecasts and warnings. [www.weather.gov](http://www.weather.gov)



# Severe Weather Outlook

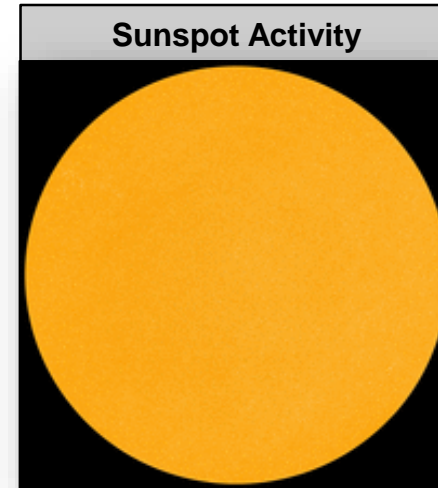
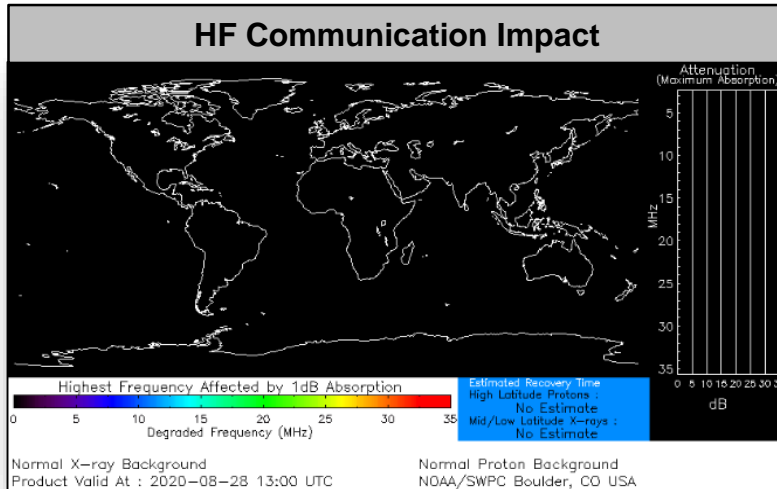


# Space Weather



FEMA

	Space Weather Activity	Geomagnetic Storms	Solar Radiation	Radio Blackouts
Past 24 Hours	None	None	None	None
Next 24 Hours	None	None	None	None
For further information on NOAA Space Weather Scales refer to: <a href="http://www.swpc.noaa.gov/noaa-scales-explanation">http://www.swpc.noaa.gov/noaa-scales-explanation</a> For further information on Sun Spot Activity refer to: <a href="https://www.swpc.noaa.gov/phenomena/sunspotssolar-cycle">https://www.swpc.noaa.gov/phenomena/sunspotssolar-cycle</a>				



# California Wildfires – Response / Recovery



FEMA

## Situation:

There are 367 fires currently burning across CA and 24 are classified as major fires. 8 (+2) have FMAGS approved with a combined 1.46 million acres burned, 70k (-10k) homes are threatened, and 1,380 (+70) homes destroyed. Air Quality Alerts in effect for 11 counties.

## Lifeline Impacts: (FEMA Region IX Tri-Fold #8, as of Aug 28)

### Safety and Security

- Evacuations: Mandatory and voluntary in effect for 18 counties
- 30 NG arrived in Napa County to escort evacuees
- 4 fires are 90% contained

### Food, Water, Shelter

- Shelters:
  - Congregate: 14 (-2) open shelters; 1,066 (+226) occupants
  - Non-congregate: 3,571(+530) occupants in 1,612 (+805) rooms

### Health and Medical

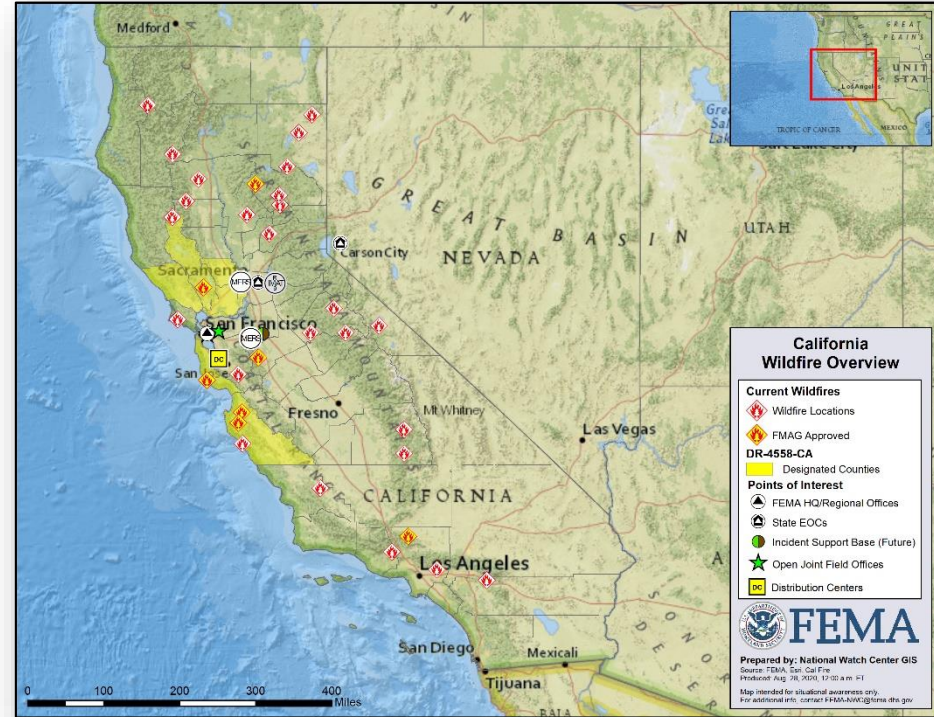
- 6 confirmed fatalities
- HHS declared a public health emergency for CA
- HHS ordered 5 COVID-19 test machines for 3 shelters

## State / Local Response:

- State of Emergency declared August 19
- CA EOC at Full Activation (Wildfires & COVID-19)

## FEMA Response:

- FEMA-4558-DR-CA approved on August 22
- Region IX IMAT-1 deployed to CA (Wildfires)
- MERS assets deployed to Tracy, CA and enroute to Mather, CA
- NWC and Region IX RWC continue to monitor





# White River Fire – OR



FEMA

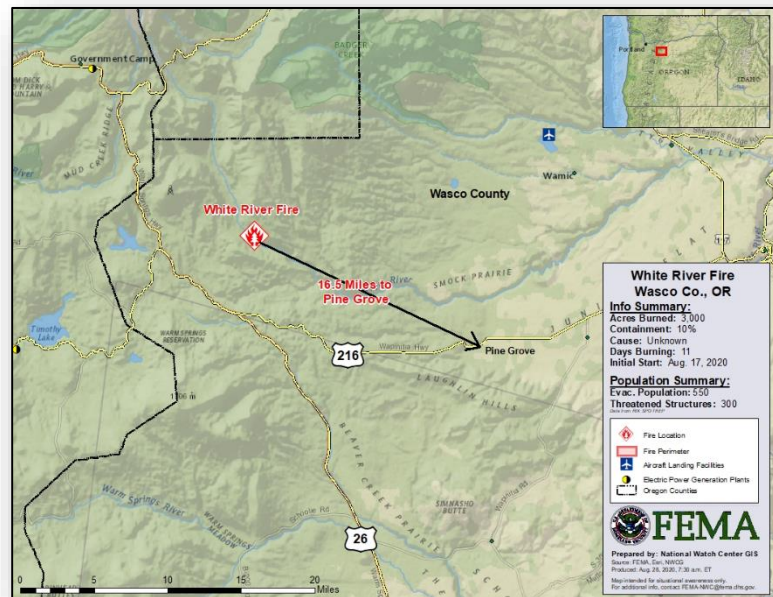
Fire Name (County, ST)	FMAG #	Acres Burned	Percent Contained	Evacuations	Structures (Homes / Other)			Fatalities / Injuries
					Threatened	Damaged	Destroyed	
White River (Wasco County, OR)	5341-FM-OR	3,000	10%	M: 550 V: 0	H: 300 O: 0	H: 0 O: 0	H: 0 O: 0	0 / 0

## Current Situation:

- Fire began August 17 and is burning on federal, state, and private land
- Threatening 300 homes in and around the communities of Pine Grove, Sportsman's Paradise, and Maupin, OR, (combined pop. 700), Bonneville Power Administration power lines, Wasco electric high transmission lines, Pine Grove water supply, and a high cultural resource area
- Mandatory evacuations in effect for 550 people

## Response:

- FMAG approved August 28
- Region X and Bothell MOC continue to monitor
- NWC continues to monitor





# Wildfire Summary



FEMA

Fire Name (County, ST)	FMAG #	Acres Burned	Percent Contained	Evacuations	Structures (Homes / Other)			Fatalities / Injuries
					Threatened	Damaged	Destroyed	
Griffin Fire (Gila County, AZ)	5340-FM-AZ	61,897 (+1,822)	28%	M: 20	H: 187 (-2)	H: 0	H: 0	0 / 0
				V: 0	O: 4	O: 0	O: 0	
Grizzly Creek Fire (Garfield & Eagle counties, CO) FINAL	5334-FM-CO	32,408 (+106)	68% (+7%)	M: 0	H: 4,258	H: 0	H: 0	0 / 14
				V: 0	O: 1,053	O: 0	O: 3	
River Fire (Monterey County, CA) FINAL	5329-FM-CA	48,732 (+308)	63% (+5%)	M: 0 (-) 596	H: 0 (-181)	H: 11	H: 13	0 / 0
				V: 0	O: 0	O: 2	O: 17	
LNU Lightning Fire Complex (Napa County, CA)	5331-FM-CA	369,935 (+9,067)	35% (+2%)	M: 80,800 (+883)	H: 30,000	H: 210	H: 716	5 / 4
				V: 0	O: 500	O: 62	O: 364	
Carmel Fire (Monterey County, CA) FINAL	5333-FM-CA	6,767 (+72)	65% (+10%)	M: 0 (-1,152)	H: 0 (-349)	H: 6	H: 50	0 / 0
				V: 0	O: 0	O: 1	O: 23	
CZU Lightning Fire Complex (Santa Cruz and San Mateo counties, CA)	5336-FM-CA	81,479 (+342)	24% (+5%)	M: 52,981 (-24,853)	H: 13,305 (-11,018)	H: 59 (+20)	H: 517 (+108)	1 / 0
				V: 0	O: 0	O: 24 (+2)	O: 229 (+48)	
SCU Lightning Fire Complex (Santa Clara and Stanislaus counties, CA)	5338-FM-CA	369,471 (+2,100)	35% (+5%)	M: 7,000	H: 20,000	H: 8 (+2)	H: 28 (+8)	0 / 5
				V: 0	O: 65	O: 1 (+1)	O: 20 (+3)	
Sheep Fire (Lassen County, CA)	5339-FM-CA	28,980	16%	M: 1,000 (-24)	H: 2,040	H: 1	H: 9	0 / 0
				V: 0	O: 155	O: 0	O: 17	

(Evacuations: M = Mandatory / V = Voluntary

Structures: H = Homes and Mixed Commercial/Residential / O = Non-residential Commercial/Other Minor Structures)

# Joint Preliminary Damage Assessments



FEMA

Region	State / Location	Event	IA/PA	Number of Counties		Start – End
				Requested	Complete	
I	CT	Tropical Storm Isaias Aug 4, 2020	IA	8	0	TBD
			PA	8	0	TBD
II	NY	Tropical Storm Isaias Aug 4, 2020	IA	0	0	TBD
			PA	8	0	8/25 – TBD
III	DE	Tropical Storm Isaias Aug 4-5, 2020	IA	2	0	8/20 – TBD
			PA	3	0	8/20 – TBD
III	MD	Tropical Storm Isaias Aug 4-5, 2020	IA	0	0	N/A
			PA	4 (-1)	0	8/21 – TBD
III	PA	Tropical Storm Isaias Aug 4-5, 2020	IA	9	0	8/26 – TBD
			PA	11	0	8/26 – TBD
IV	NC	Hurricane Isaias Aug 3, 2020	IA	0	0	N/A
			PA	16 (+2)	0	8/18 – TBD
VI	TX	Hurricane Hanna Jul 25, 2020 and continuing	IA	6	6	7/29 – 8/20
			PA	6	0	7/29 – TBD
VII	IA	Derecho Aug 10, 2020 and continuing	IA	27	0	8/15 – TBD
			PA	16	0	8/15 – TBD

# Declaration Approved



FEMA

**Declaration:** Emergency Declaration – Arkansas  
FEMA-3541-EM-AR

**Requested:** August 26, 2020

**Approved:** August 27, 2020

**Incident:** Hurricane Laura

**Incident Period:** August 26, 2020 and continuing

**Includes:**

- **PA:** Emergency protective measures (Category B), including direct federal assistance at 75 percent federal funding statewide

**FCO:** Roland W. Jackson



■ PA

# Declaration Requests in Process – 5



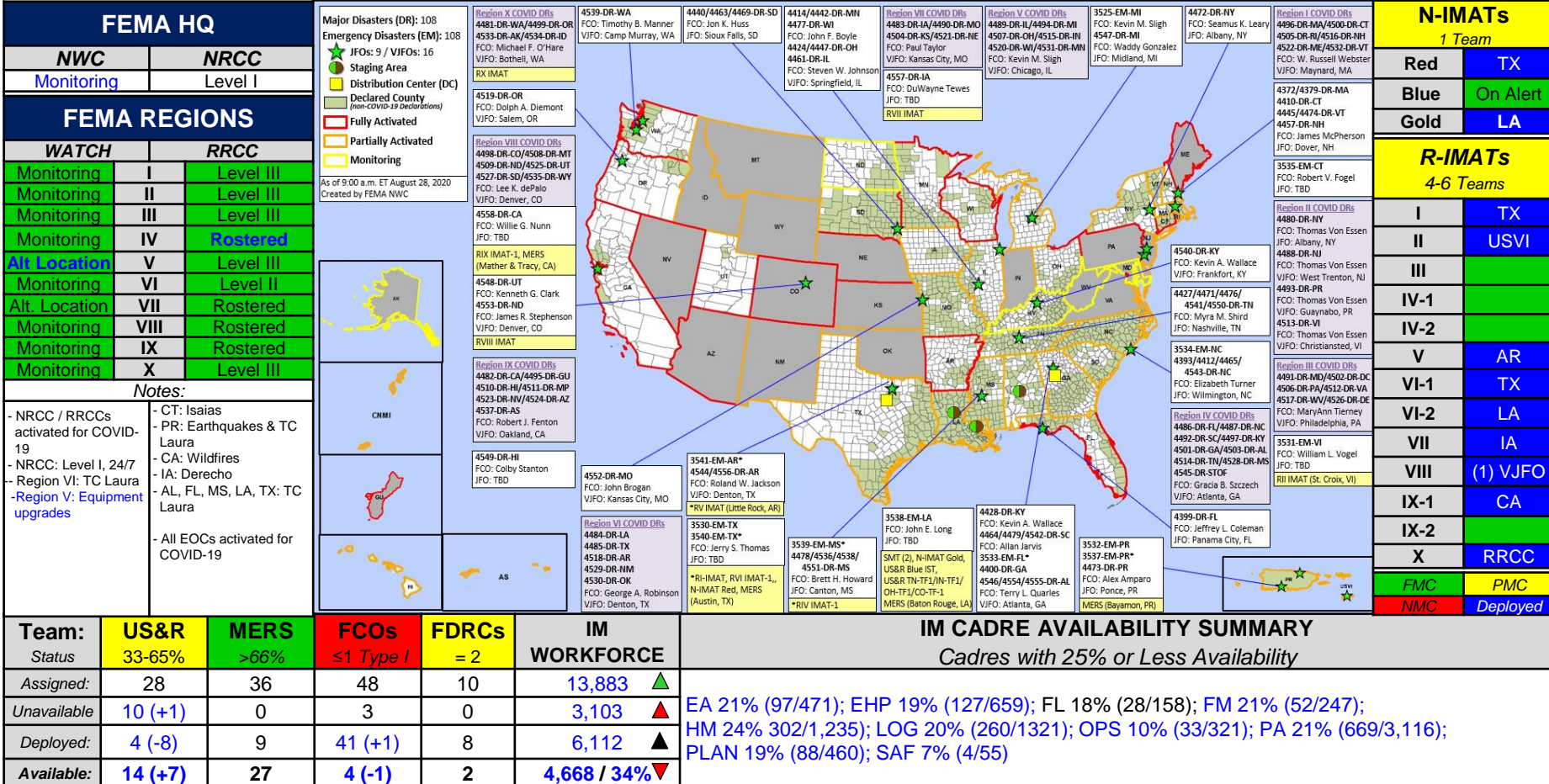
FEMA

State / Tribe / Territory – Incident Description	Type	IA	PA	HM	Requested
Poarch Band of Creek Indians – COVID-19 Pandemic	DR	X	X		May 15
LA – Severe Storm and Tornadoes	DR		X	X	Jul 10
Sac & Fox Tribe of the Mississippi of Iowa – Severe Weather	DR	X	X	X	Aug 14
Puerto Rico – Tropical Storm Isaias	DR	X			Aug 21
Florida – Tropical Storm Laura	EM		X		Aug 21
Arkansas – Hurricane Laura <b>APPROVED August 27, 2020</b>	EM		X		Aug 26

# FEMA Common Operating Picture



FEMA





# FEMA

**FEMA's mission is helping people  
before, during, and after disasters.**

Click [here](#) to subscribe to this briefing  
[FEMA.GOV](https://www.fema.gov)