



FEMA

Daily Operations Briefing

Friday, March 6, 2020

8:30 a.m. ET

National Current Operations & Monitoring



FEMA

Significant Incidents or Threats:

- Tornadoes – Tennessee Response/Recovery - **FINAL**
- Snow – Cascades / Sierra Nevada, Central Appalachians, and Lower Great Lakes

Declaration Activity:

- Approval: Major Disaster Declaration – FEMA-DR-4476-Tennessee

Tornadoes – Tennessee - FINAL



FEMA

Situation: A storm system moved through the state of Tennessee bringing tornadic activity, heavy rain, hail, and powerful winds, through the west and middle regions of the state. Seven tornadoes reported as a combination of EF-2, EF-3 and one EF-4, leaving a wide path of destruction through the counties of Davidson, Wilson, Putnam, Gibson, Carroll, and Benton.

Lifeline Impacts:

Safety and Security:

- Five schools closed; relocation plans being established for students
- 1,546 structures damaged/destroyed; damage assessments continue
- SAR missions are complete; all persons accounted for

Food, Water, Shelter:

- 6 shelters open / 120 (+11) occupants (ARC shelter count, 5:30 a.m. ET)

Health and Medical:

- 24 confirmed fatalities; 65 injuries reported

Energy:

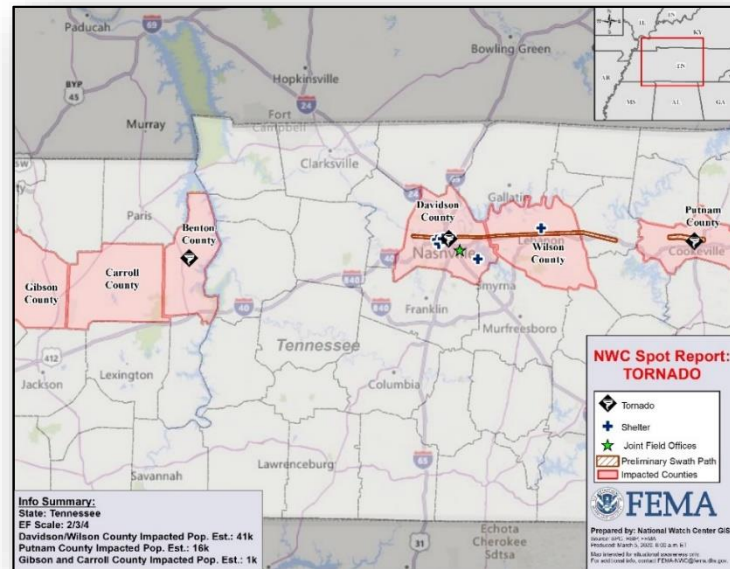
- 12k (-9k) customers statewide down from peak 82k (* EAGLE-I as of 7:30 a.m. ET)

Transportation:

- John C. Tune Municipal Airport remains closed
- Music City Star transit service (local rail service) remains closed due to debris; alternate transit services available and all major roadways open

State/Local Response:

- TN EOC at Partial Activation; Governor declared a State of Emergency



Federal Response:

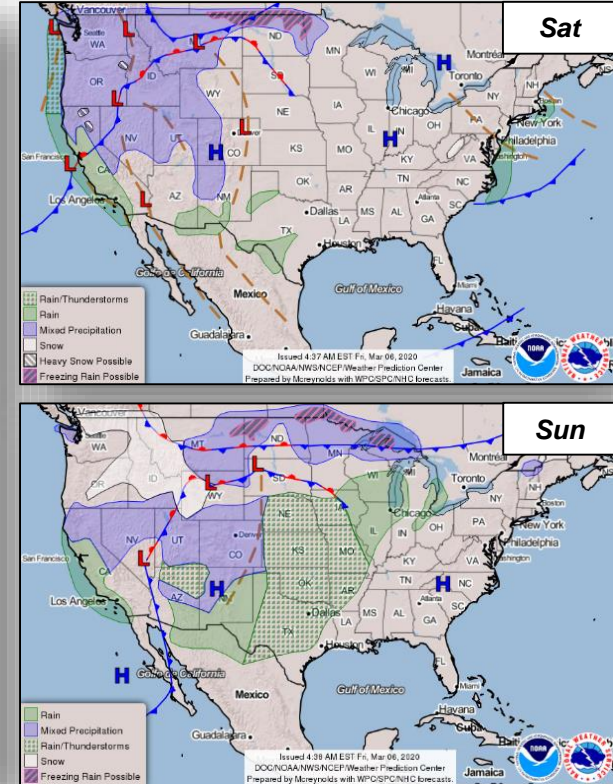
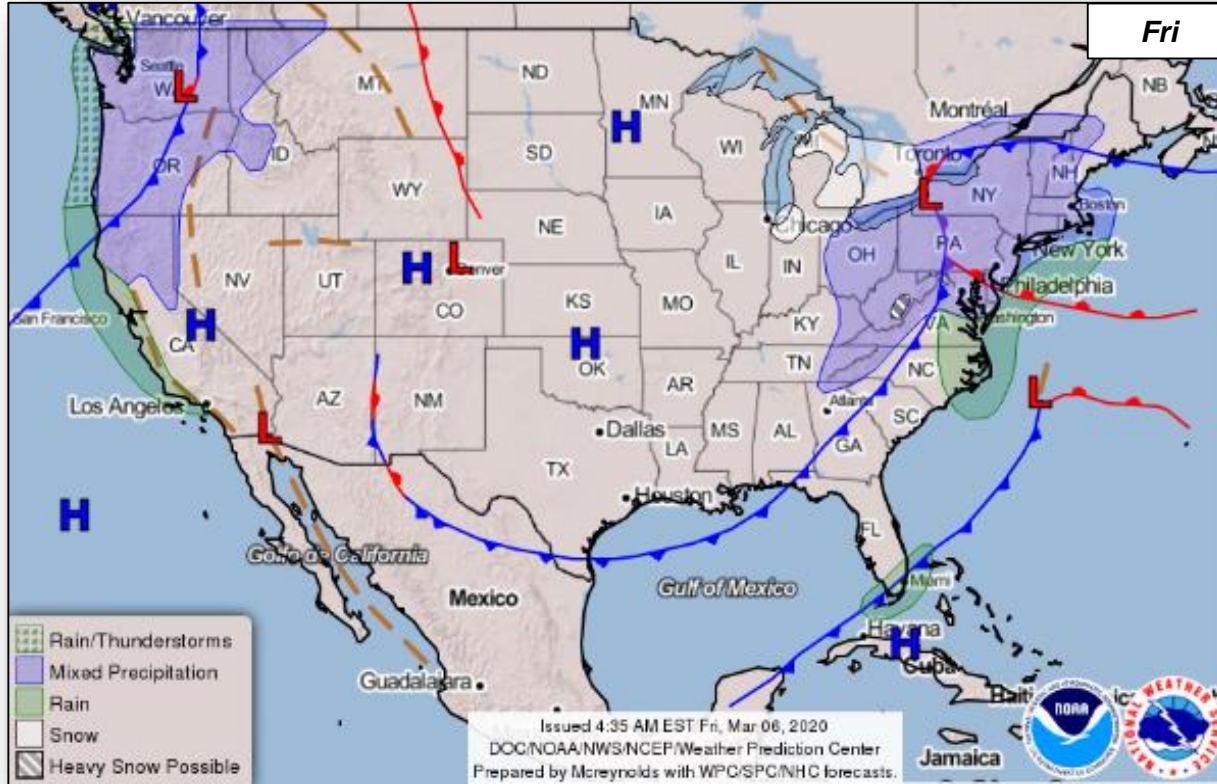
- Region IV: RRCC: rostered; RWC continues to monitor
 - IMAT-2 Deployed to TN EOC
 - FEMA Initial Operating Facility (IOF) established at TN EOC
- FEMA NWC continues to monitor
- Major Disaster Declaration FEMA-4476-TN approved March 5

*Note: Customer outage data is provided by the Department of Energy's EAGLE-I system. Comprehensive National coverage of all electrical service providers is not available.

National Weather Forecast



FEMA



Joint Preliminary Damage Assessments



FEMA

Region	State / Location	Event	IA/PA	Number of Counties		Start – End
				Requested	Completed	
IV	KY	Severe Storms & Flooding Feb 3	IA	4	4	2/26 – 2/28
			PA	25	9	2/25 – TBD
	MS	Severe Storms, Flooding, & Mudslides Feb 10-18	IA	0	0	N/A
			PA	14	0	3/5 – TBD
V	IL	Severe Storms & Lake Shore Flooding Jan 10-12	IA	0	0	N/A
			PA	2	1	2/24 – TBD
X	WA	Flooding, Landslides & Mudslides Jan 20 – Feb 10	IA	7	0	3/2 – TBD
			PA	18	18	2/24 – 2/29

Declaration Approved



FEMA

Declaration: Major Disaster Declaration

FEMA-4476-DR-TN Tennessee

Requested: Mar 5

Approved: Mar 5

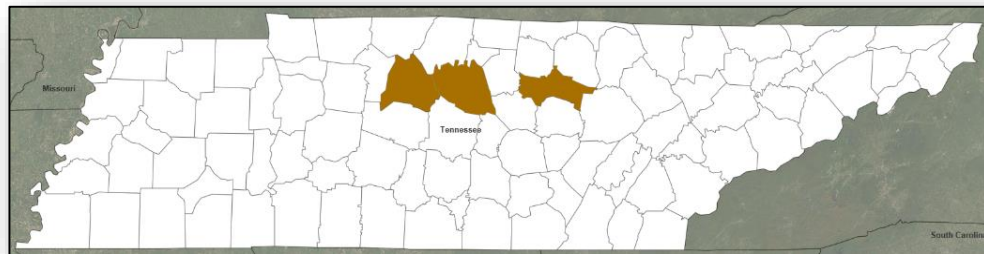
Incident: Severe Storms, Tornadoes, Straight-line Winds, and Flooding

Incident Period: Mar 3

Includes:

- **IA & PA:** 3 Counties
- **Hazard Mitigation:** Statewide

FCO: Myra M. Shird



■ IA & PA

Declaration Requests in Process – 4

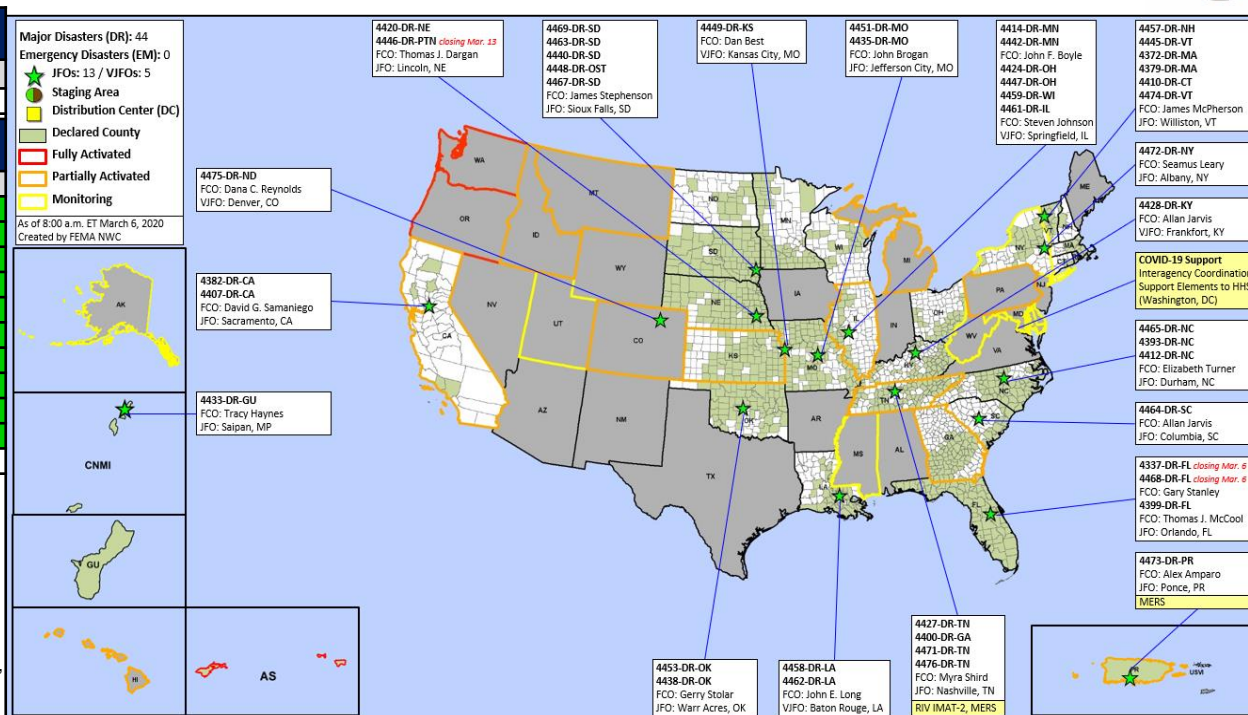


FEMA

State / Tribe / Territory – Incident Description	Type	IA	PA	HM	Requested
TX – Severe Storms, Straight-line Winds, and Tornadoes	DR		X	X	Jan 13
AK – Severe Storms and Flooding – DENIED (Mar 5)	DR		X	X	Feb 6
WI – Severe Winter Storm and Flooding	DR		X	X	Feb 10
MS – Severe Storms, Tornadoes, Straight-line Winds, and Flooding	DR		X	X	Feb 10
AR – Severe Storm, Straight-line Winds, and a Tornado (Appeal)	DR		X	X	Feb 20
TN – Severe Storms, Tornadoes, Straight-line Winds, and Flooding – APPROVED (Mar 5)	DR	X	X	X	Mar 5



FEMA HQ		
NWC	NRCC	
Monitoring	ROC	
FEMA REGIONS		
WATCH	RRCC	
Monitoring	I	Rostered
Monitoring	II	Rostered
Monitoring	III	Rostered
Monitoring	IV	Rostered
Monitoring	V	Rostered
Monitoring	VI	Rostered
Monitoring	VII	Rostered
Monitoring	VIII	Rostered
Monitoring	IX	Rostered
Monitoring	X	Rostered
Notes:		
ROC: COVID-19	AS: Measles KS: Fire WX MS: Flooding PR: Earthquake TN: Tornadoes GA: Flooding COVID-19: AK, CA, CO, DC, DE, HI, ID, IL, MD, MI, MT, NY, OR, PA, UT, WA, WV	
Team:	US&R	MERS
Status	>66%	>66%
Assigned:	28	36
Unavailable	0	0
Deployed:	0	2
Available:	28	34



N-IMATs 3 Teams	
Red	
Blue	
Gold	
R-IMATs ≥ 7 Teams	
I	1
II	
III	
IV-1	
IV-2	TN
V	
VI-1	
VI-2	2
VII	
VIII	
IX-1	
IX-2	
X	3
FMC	PMC
NMC	Deployed

Team:	US&R	MERS	FCOs	FDRCS	IM WORKFORCE	IM CADRE AVAILABILITY SUMMARY
Status	>66%	>66%	≤ 1 Type I	≤ 1		Cadres with 25% or Less Availability
Assigned:	28	36	45	11	13,992 ▼	ADR 20% (10/49); EHP 19% (118/615); FL 19% (31/162); PA 17% (515/3,032)
Unavailable	0	0	3	0	3,783 ▼	
Deployed:	0	2	32	9	5,555 ▲	
Available:	28	34	10	2	4,654 / 33% ▼	



FEMA

**FEMA's mission is helping people
before, during, and after disasters.**

Click [here](#) to subscribe to this briefing.