



For workers and businesses affected by COVID-19, Employment Security has programs that may help. Please see ESD's website for more information. For labor market information questions, please send your emails to lmea@esd.wa.gov.

Employment estimates in this report are generated by the U.S. Bureau of Labor Statistics (BLS). Monthly employment estimates are subject to revision in subsequent months when more sample data become available. BLS data in this report are rounded to the nearest 100.

On a seasonally adjusted basis, preliminary estimates from the federal Bureau of Labor Statistics (BLS) indicate nonfarm employment in Washington rose by 1,000 in October 2020.¹ BLS estimates the private sector gained 14,100 jobs during the month and the public sector lost 13,100 jobs.

On a not seasonally adjusted basis, estimates for October 2019 through October 2020 indicate a decrease in employment of 173,200 for the state. The private sector lost 132,000 jobs while the public sector lost an estimated 41,200 jobs over the year.

Washington's preliminary seasonally adjusted unemployment rate for October 2020 is 6.0 percent. The revised estimated September 2020 unemployment rate is at 8.3 percent. The October 2019 unemployment rate was 4.0 percent.

BLS estimates of monthly job gains and losses are based on a survey of businesses. Preliminary estimates are subject to revision. September's preliminary estimated gain of 2,400 jobs was revised to a gain of 23,800 jobs.

For more information, call Paul Turek, labor economist at 360-706-3044.

Resident civilian labor force and unemployment, seasonally adjusted

The **resident civilian labor force** is the total number of people in the workforce, employed and unemployed, ages 16 and up.

The number of **unemployed** is the estimated number of people who currently do not have a job, are available for work and have actively looked for work in the last four weeks.

The **unemployment rate** is the ratio of the estimated number of unemployed divided by the civilian labor force.



Labor Market and
Economic Analysis
November 2020

Resident civilian labor force and unemployment, seasonally adjusted
United States and Washington state, September and October, 2019 and 2020
Source: Employment Security Department/LMEA; U.S. Bureau of Labor Statistics, Local Area Unemployment Statistics

	October 2020 (Preliminary)	September 2020 (Revised)	October 2019 (Revised)	September 2019 (Revised)
United States				
Unemployment rate				
Seasonally adjusted	6.9%	7.9%	3.6%	3.5%
Washington				
Unemployment rate	6.0%	8.3%	4.0%	4.1%
Resident labor force	3,989,000	3,928,300	3,946,400	3,940,100
Unemployed	238,600	326,000	158,900	161,100
Seattle/Bellevue/Everett				
Unemployment rate	4.8%	6.9%	2.7%	2.7%
Resident labor force	1,702,000	1,714,900	1,742,700	1,740,800
Unemployed	82,000	117,900	46,400	47,000

¹Most of the employment numbers discussed in this report refers to jobs, not people. For example, if a person holds two positions, these positions are counted as two jobs in the employment series. In the section titled "Unemployment," these positions refer to individuals, not jobs. In this case, a person holding two jobs is counted only once.

Unemployment, seasonally adjusted

The BLS estimates Washington's preliminary seasonally adjusted unemployment rate for October 2020 is 6.0 percent. The revised estimated September 2020 unemployment rate is 8.3 percent.

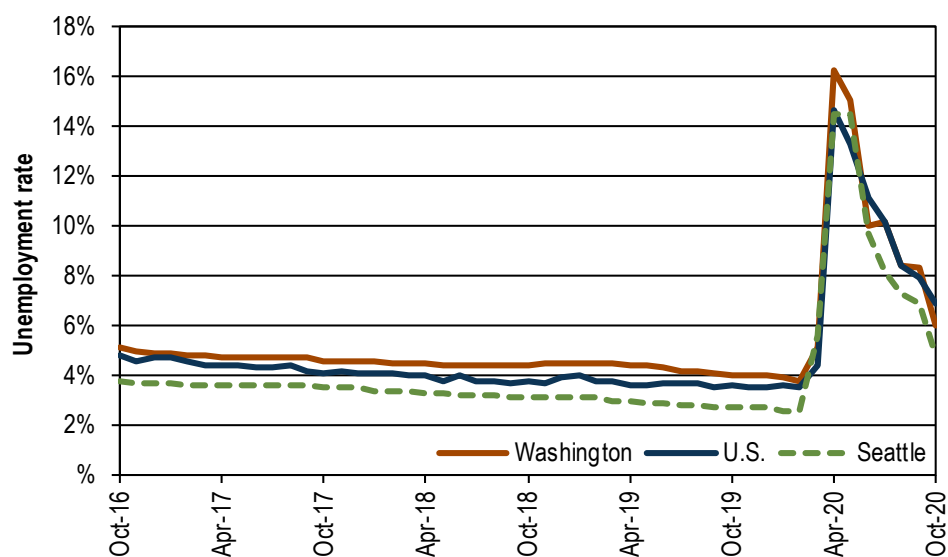
According to BLS estimates, the number of unemployed people fell by 87,400 in October 2020 compared to September 2020. At the same time, the number of employed people rose by an estimated 148,100. Overall, this amounted to an increase of 60,700 people in the labor force.

The preliminary October 2020 unemployment rate is 2.0 percentage points higher than the October 2019 rate of 4.0 percent.

Unemployment rates, seasonally adjusted

U.S., Washington and Seattle, October 2016 through October 2020

Source: Employment Security Department/LMEA; U.S. Bureau of Labor Statistics, Local Area Unemployment Statistics



October 2020 preliminary unemployment rates:

U.S. (preliminary) 6.9%

Washington (preliminary) 6.0%

Seattle area (preliminary) 4.8%

Employment change, seasonally adjusted

Based on BLS estimates, Washington state nonfarm employment increased by 1,000 jobs from September 2020 to October 2020.

Recent employment change:

August 2020: up 50,100 jobs (revised)

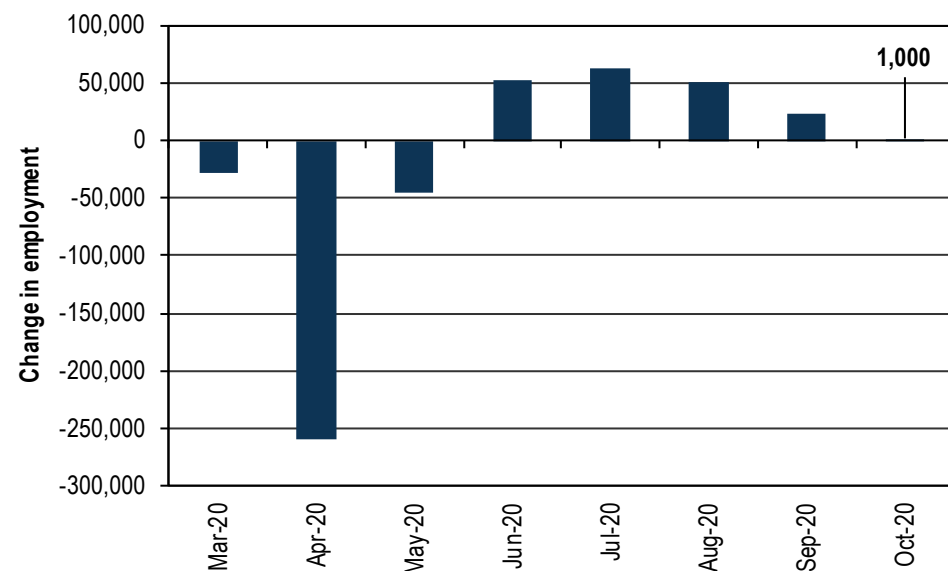
September 2020: up 23,800 jobs (revised)

October 2020: up 1,000 jobs (preliminary)

Monthly employment change, seasonally adjusted

Washington state, March 2020 through October 2020

Source: Employment Security Department/LMEA; U.S. Bureau of Labor Statistics, Current Employment Statistics



Employment and unemployment, seasonally adjusted

February 2020

(Start of 2020 employment recession in Washington)

Nonfarm employment: 3,480,800

Unemployment rate: 3.8%

October 2020 (preliminary)

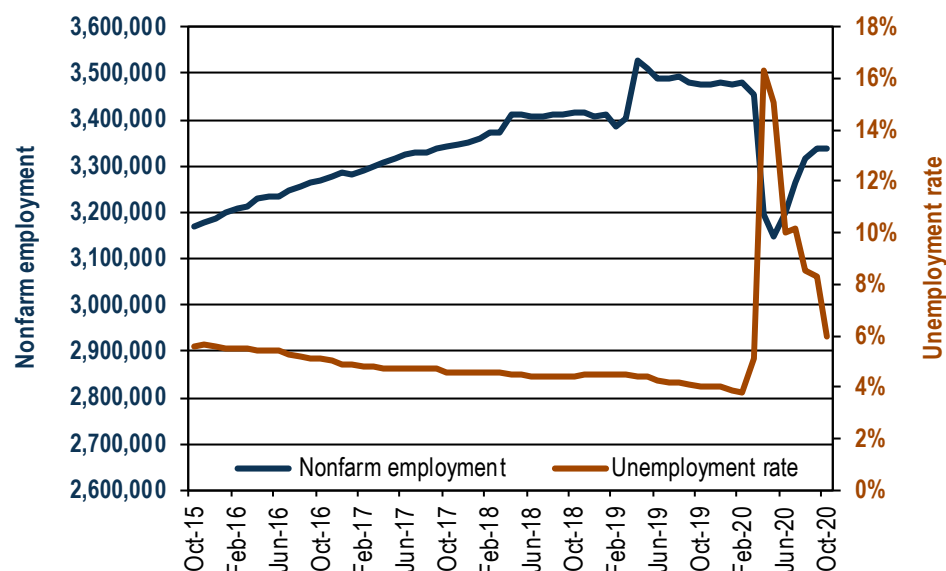
Nonfarm employment: 3,338,900

Unemployment rate: 6.0%

Nonfarm employment and unemployment rate, seasonally adjusted

Washington state, October 2015 through October 2020

Source: Employment Security Department/LMEA; U.S. Bureau of Labor Statistics, Current Employment Statistics, Local Area Unemployment Statistics



Workers and businesses affected by COVID-19

Employment Security's **COVID-19 online information page** covers topics for businesses and workers impacted by COVID-19. Topics include:

- Subscribing for updates
- Frequently asked questions
- Workers Q&A
- Business Q&A
- CARES ACT
- Federal stimulus updates
- Eligibility checker
- COVID-19 rulemaking
- Action alerts and updates

We are all in this together. COVID-19 has created an unprecedented demand for services, but we are building capacity, updating technology, and we thank you for your patience while we work to serve you better.

Did you know that you can subscribe for email updates on a number of Employment Security Department topics all at once? Go to esd.wa.gov/labormarketinfo and select the email icon at the top of the page.



Enter your email address and subscribe by checking the boxes for topics such as:

COVID-19
Labor market information
News releases
Employer news and resources
Paid Family and Medical Leave
Employer information
Shared work
WorkSource system
Unemployment insurance
Training

Many more to come, so sign up today for your email updates!

U-6 unemployment rate

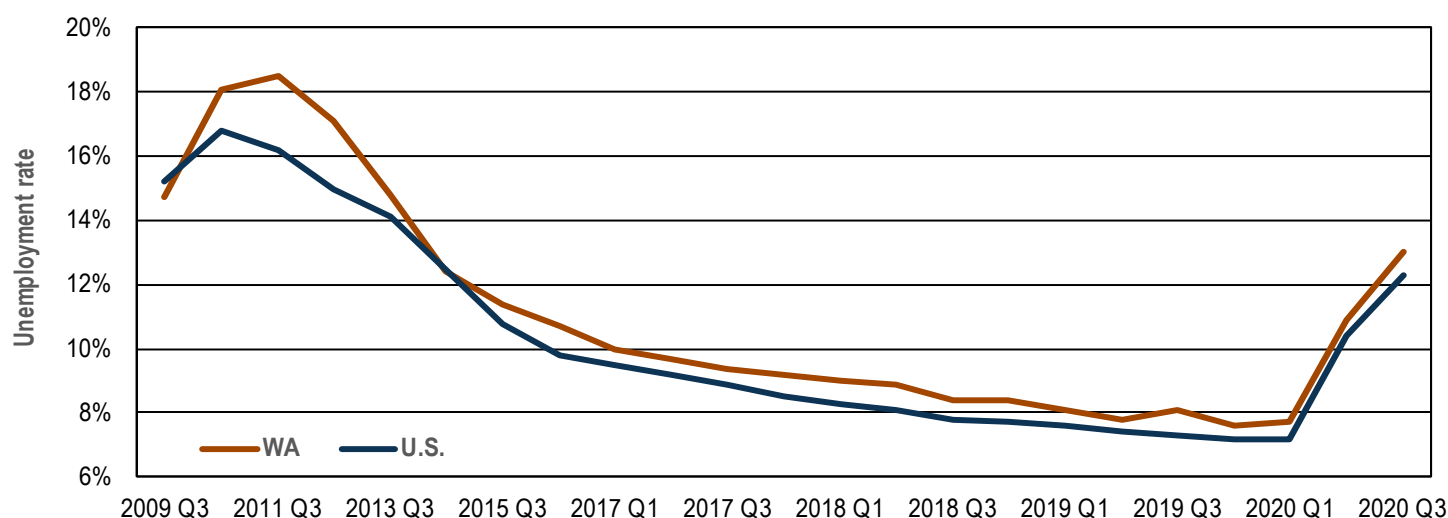
U-6: Broader unemployment measure increased in the four-quarter period ending third quarter 2020

The U.S. Bureau of Labor Statistics (BLS) recently updated its “alternative measures of labor underutilization” for states to include annual averages for first quarter 2020. One such alternative measure is the U-6 rate, which considers not only the unemployed population in

the official “U-3” unemployment rate, but also marginally attached workers and those employed part time for economic reasons. The U-6 rate is defined by BLS as the “total unemployed, plus all marginally attached workers, plus total employed part time for economic reasons, as a percent of the civilian labor force plus all marginally attached workers.” This U-6 measure measures the

“unemployed, underemployed, and those who are not looking but who want a job.”

The U-6 annual unemployment rate for third quarter 2020 for Washington state was 13.0 percent. This was higher compared to the 10.9 percent U-6 unemployment 2020 second quarter rate. The U.S. U-6 unemployment rate was 12.3 percent in third quarter 2020.



Alternate measures of labor underutilization, four-quarter moving average
Washington state versus U.S. U-6 unemployment rate

Year	WA/U.S.	Q1	Q2	Q3	Annual average
2020	WA	8.1%	10.9%	13.0%	
	U.S.	7.7%	10.4%	12.3%	
2019	WA	8.1%	7.8%	8.1%	7.6%
	U.S.	7.6%	7.4%	7.3%	7.2%
2018	WA	9.0%	8.9%	8.4%	8.4%
	U.S.	8.3%	8.1%	7.8%	7.7%
2017	WA	10.0%	9.7%	9.4%	9.2%
	U.S.	9.5%	9.2%	8.9%	8.5%
2016	WA	10.9%	10.7%	10.7%	10.3%
	U.S.	10.1%	9.9%	9.8%	9.6%
2015	WA	12.0%	11.7%	11.4%	11.0%
	U.S.	11.6%	11.3%	10.8%	10.4%
2014	WA	13.3%	12.8%	12.4%	12.5%
	U.S.	13.4%	12.9%	12.5%	12.0%
2013	WA	16.4%	15.7%	14.8%	14.0%
	U.S.	14.5%	14.3%	14.1%	13.8%
2012	WA	17.6%	17.0%	17.1%	16.9%
	U.S.	15.6%	15.3%	15.0%	14.7%

Source: Bureau of Labor Statistics: <https://www.bls.gov/lau/stalt.htm>.

Industry employment in Washington, seasonally adjusted

One-month employment change by industry

Based on a BLS survey of businesses and governments, Washington gained an estimated 1,000 jobs during the month, on a seasonally adjusted basis:

- Overall, employment increased in seven major industries, contracted in five and was unchanged in one in October.
- Private sector employment is estimated to have increased by 14,100 and government employment decreased by 13,100.
- Employment in professional and business services increased by 4,800, with 2,800 jobs added in employment services.
- Retail trade employment rose by 4,100 overall, with 1,600 jobs gained in general merchandise stores.
- Employment in leisure and hospitality increased by 3,200, with 1,900 jobs added in food services and drinking places.
- Construction employment rose by 2,400 overall, with 2,400 jobs added by specialty trade contractors.
- The number of jobs in manufacturing decreased by 1,800 overall, with a decrease of 4,100 in aerospace product and parts manufacturing.

Estimated one-month employment change by industry, seasonally adjusted
Washington state, September 2020 to October 2020

Source: Employment Security Department/LMEA; U.S. Bureau of Labor Statistics, Current Employment Statistics

Total nonfarm	1,000
Professional and business services	4,800
Retail trade	4,100
Leisure and hospitality	3,200
Construction	2,400
Education and health services	1,700
Transportation, warehousing and utilities	400
Information	100
Mining and logging	0
Financial activities	-100
Wholesale trade	-200
Other services	-500
Manufacturing	-1,800
Government	-13,100

As we navigate the COVID-19 developments

in Washington state and beyond, we know Washington state businesses, nonprofits, city and county municipalities, educational institutions, as well as economic and workforce development professionals, are looking for sound data about the short and long term economic and workforce impacts to their individual businesses, industries and regions.

Since the current situation is still evolving, we will share information as soon as possible. In the meantime, if you have specific questions regarding labor market information, please send your emails to lmea@esd.wa.gov.

Industry employment in Washington, not seasonally adjusted

Change by industry over the year

Based on a BLS survey of businesses and governments, Washington lost an estimated 173,200 jobs from October 2019 through October 2020.

- Overall, three major industries expanded and ten contracted.
- Private sector employment fell 4.5 percent, down an estimated 132,000 jobs.
- Public sector employment fell 6.9 percent, down an estimated 41,200 jobs.
- Retail trade employment rose 5,400 overall, with the most jobs gained in general merchandise stores.
- Professional and business services employment decreased by 3,300 overall, with the most jobs lost in employment services.
- Education and health services employment decreased by 14,500, with 10,000 jobs lost in private education services.
- Employment in manufacturing is down 26,600, led by a decrease of 14,200 in aerospace product and parts manufacturing.
- Employment in leisure and hospitality is down by 70,600, with food services and drinking places shedding 39,300 jobs.

Estimated employment change by industry over the year, not seasonally adjusted
Washington state, October 2019 through October 2020

Source: Employment Security Department/LMEA; U.S. Bureau of Labor Statistics, Current Employment Statistics

Total nonfarm	-173,200
Retail trade	5,400
Information	3,900
Construction	3,300
Mining and logging	-300
Transportation, warehousing and utilities	-2,400
Financial activities	-3,200
Professional and business services	-3,300
Wholesale trade	-11,200
Other services	-12,500
Education and health services	-14,500
Manufacturing	-26,600
Government	-41,200
Leisure and hospitality	-70,600

Seasonally adjusted employment

Seasonally adjusted numbers account for normal seasonal patterns that occur year after year, such as strong seasonal hiring in retail trade around the holidays. Taking into account normal seasonal variations makes it possible to see unusual changes in employment levels.

Normal seasonal change is the expected monthly change in employment based on history.

Estimated change is the employment change over the month based on BLS survey data.

Seasonally adjusted change is change in employment accounting for normal seasonal patterns.

Normal seasonal change, estimated change and seasonally adjusted change
Washington state, October 2020

Source: Employment Security Department/LMEA; U.S. Bureau of Labor Statistics, Current Employment Statistics

	Normal seasonal change	Estimated change	Seasonally adjusted change
Total nonfarm	11,500	12,500	1,000
Government	11,700	-1,400	-13,100
Education and health services	4,900	6,600	1,700
Construction	1,800	4,200	2,400
Other services	1,400	900	-500
Retail trade	400	4,500	4,100
Transportation, warehousing and utilities	300	700	400
Financial activities	100	0	-100
Mining and logging	0	0	0
Wholesale trade	0	-200	-200
Manufacturing	-1,200	-3,000	-1,800
Information	-1,200	-1,100	100
Professional and business services	-1,900	2,900	4,800
Leisure and hospitality	-4,800	-1,600	3,200

Based on historical patterns, Washington employment typically increases by 11,500 from September to October. This year the state gained an estimated 12,500 jobs, amounting to a seasonally adjusted increase of 1,000 jobs.

- The estimated employment increase in construction was 4,200. The normal seasonal increase is 1,800, so on a seasonally adjusted basis, construction employment rose by 2,400.

- Employment in retail trade normally rises by 400. It is estimated to have increased by 4,500 this October, so it increased by 4,100 on a seasonally adjusted basis.
- Typically, manufacturing decreases by 1,200 in October. On a seasonally adjusted basis, manufacturing employment decreased by 1,800 as the estimated decrease was 3,000.

- The employment increase on a seasonally adjusted basis was 4,800 in professional and business services in October. The normal seasonal decrease is 1,900. It is estimated to have increased this October by 2,900.
- The normal seasonal loss in leisure and hospitality employment is 4,800 in October. The estimated loss was 1,600, so employment increased by 3,200 on a seasonally adjusted basis.

Benchmarking highlights

Benchmarking is a process that replaces employment estimates with the actual number of job gains or losses.

Each month, economists estimate monthly job gains and losses based on a survey of employers. Each quarter, economists benchmark the estimates by replacing them with data from employer tax records before applying seasonal adjustments.

Benchmarked employment data are now available through June 2020. Employment estimates for October 2020 presented in this report were based on the new data, plus seasonal adjustments.

Based on benchmarked June 2020 data:

- The largest upward revision was for leisure and hospitality, up 16,600.
- The two largest downward revisions were for professional and business services and retail trade, down 4,400 and 8,500 respectively.

Quarterly benchmarked industry employment, seasonally adjusted
Washington state, June 2020

Source: Employment Security Department/LMEA; U.S. Bureau of Labor Statistics, Quarterly Census of Employment and Wages

Industry sector	Revisions to June 2020 employment level
Total nonfarm	42,300
Leisure and hospitality	16,600
Education and health services	12,400
Construction	8,300
Other services	7,500
Information	5,000
Government	4,600
Manufacturing	3,500
Wholesale trade	2,200
Mining and logging	200
Transportation, warehousing and utilities	-1,700
Financial activities	-3,400
Professional and business services	-4,400
Retail trade	-8,500

Media inquiries and contact information

Due to the high volume of requests for information, please send your emails to media@esd.wa.gov so that we can forward your requests to the appropriate staff.

For labor market information questions, please send your emails to lmea@esd.wa.gov.

Statewide labor economist:

Paul Turek, Ph.D.
pturek@esd.wa.gov
 360-706-3044

Regional labor economists:

Scott Bailey
scott.bailey@esd.wa.gov
 360-810-0048

Don Meseck
dmeaseck@esd.wa.gov
 509-574-0176

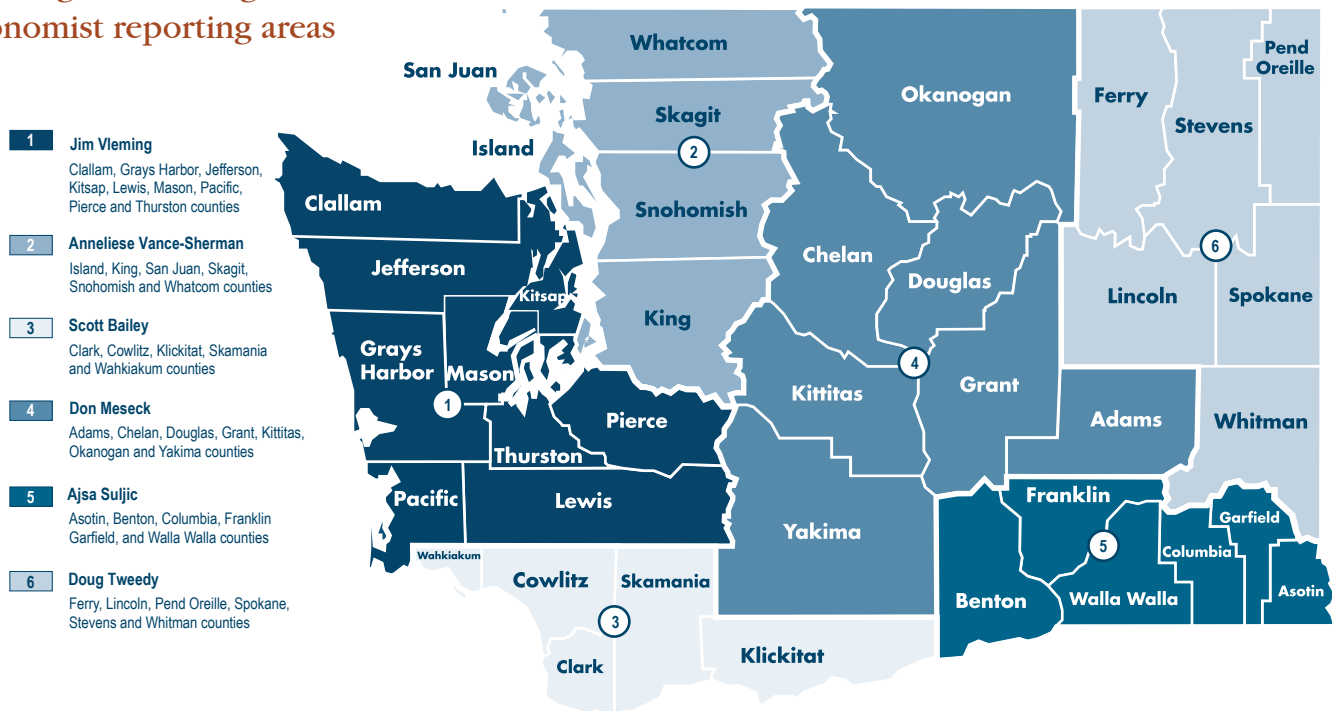
Ajsa Suljic
asuljic@esd.wa.gov
 509-734-5928

Doug Tweedy
dtweedy@esd.wa.gov
 509-434-5278

Anneliese Vance-Sherman, Ph.D.
avancesherman@esd.wa.gov
 425-258-6315

Jim Vleming
jvleming@esd.wa.gov
 360-819-3427

Washington state regional labor economist reporting areas



The county level information will be available at 10 a.m., November 24, 2020. The publication schedule for 2020 is posted at: <https://esd.wa.gov/labormarketinfo/monthly-employment-report>.

Employment Security Department is an equal opportunity employer/programs. Auxiliary aids and services are available upon request to individuals with disabilities. Language assistance services for limited English proficient individuals are available free of charge. Washington Relay Service: 711.

This workforce product was funded by a grant awarded by the U.S. Department of Labor's Employment and Training Administration. The product was created by the recipient and does not necessarily reflect the official position of the U.S. Department of Labor. The Department of Labor makes no guarantees, warranties, or assurances of any kind, expressed or implied, with respect to such information, including any information on linked sites and including, but not limited to, accuracy of the information or its completeness, timeliness, usefulness, adequacy, continued availability, or ownership. This product is copyrighted by the institution that created it. Internal use by an organization and/or personal use by an individual for non-commercial purposes is permissible. All other uses require the prior authorization of the copyright owner.