

FEMA National Watch Center

Daily Operations Briefing

Wednesday, April 14, 2021

8:30 a.m. ET



FEMA

National Current Ops / Monitoring

New Significant Incidents / Ongoing Ops:

- COVID-19

Hazard Monitoring:

- Tropical Storm Suringe - Western Pacific
- Critical Fire Weather – Southwest and Southern Rockies
- Slight risk of severe thunderstorms – Gulf Coast
- Heavy rain/flash flooding – Southern Plains to Lower MS Valley

Disaster Declaration Activity:

- Request: Major Disaster Declaration - WV

Event Monitoring:

- No significant scheduled activities

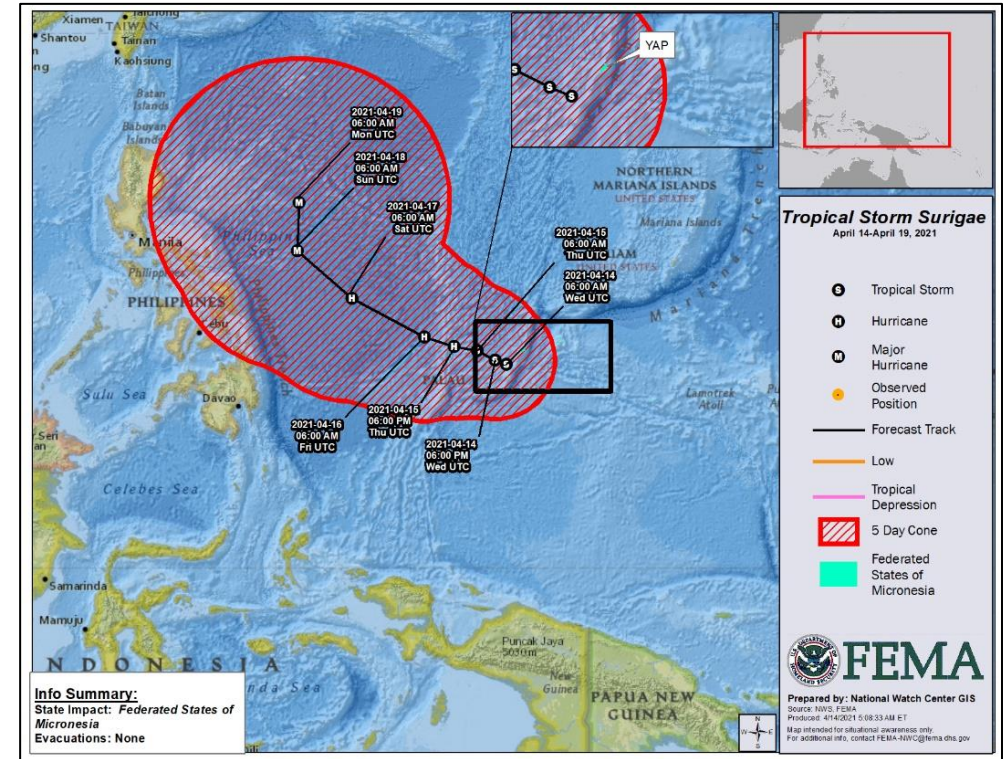


FEMA

Tropical Storm Suriage – Western Pacific

Situation: (Advisory #4, 5:00 a.m. ET)

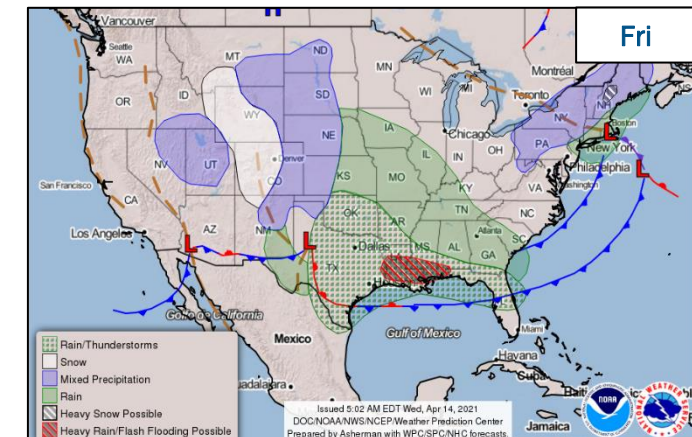
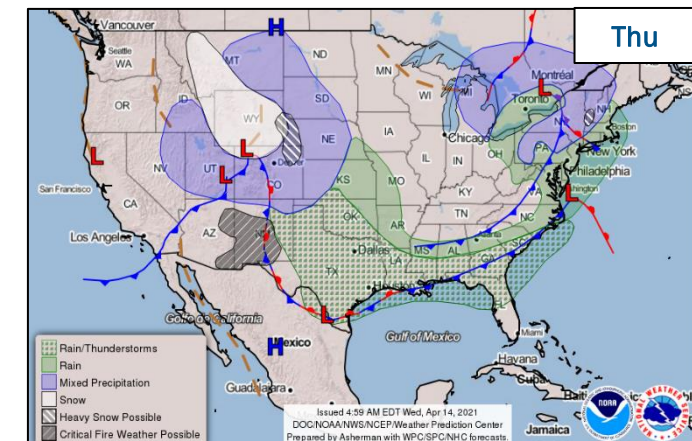
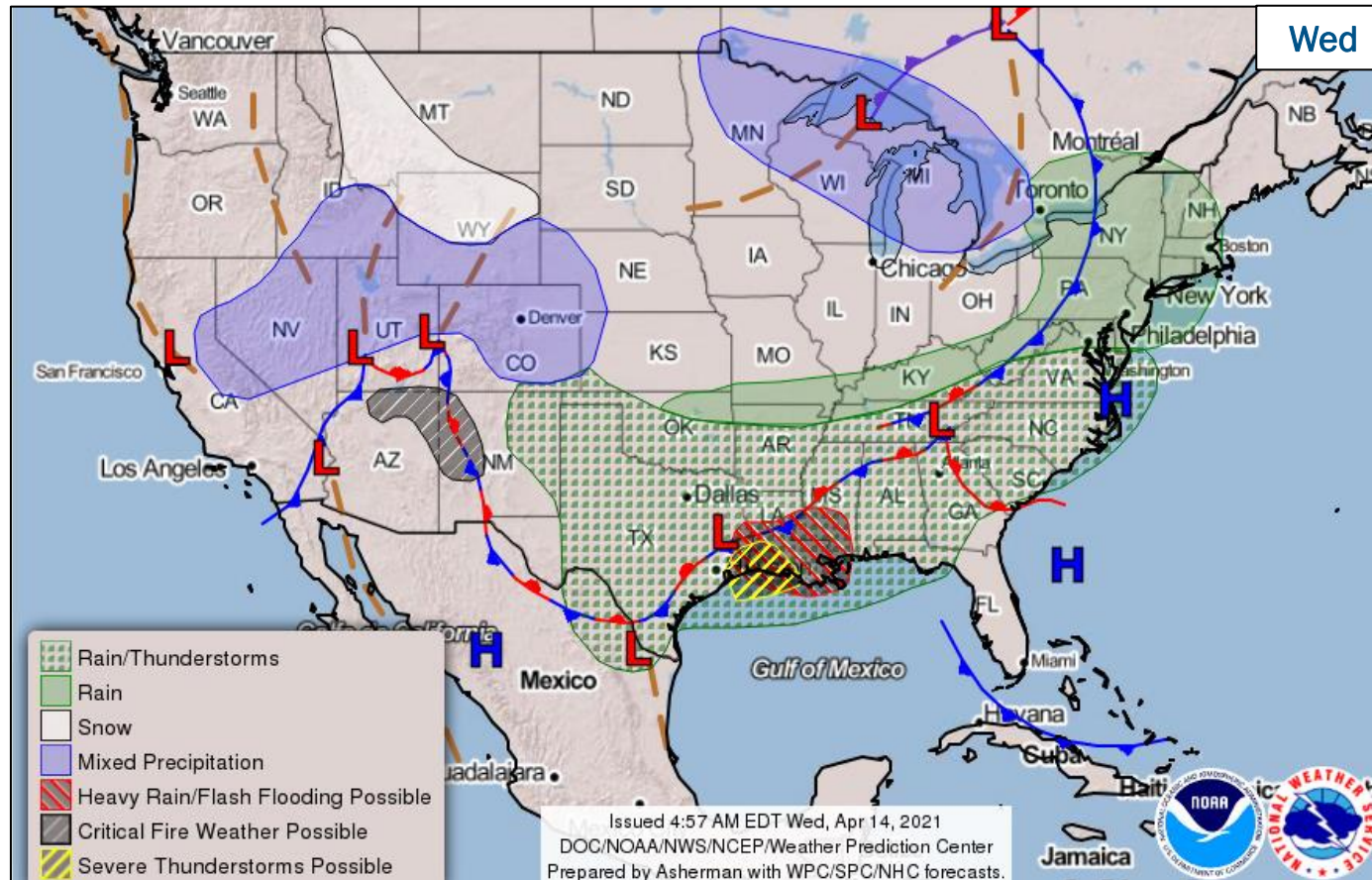
- Located 585 miles SW of Guam; 63 miles SSW of Yap, Federated States of Micronesia (FSM)
- Moving NW at 6 mph
- Maximum sustained winds 40 mph
- Forecast to intensify over the next couple of days
- Not expected to impact Guam or the Commonwealth of the Northern Mariana Islands (CNMI)



FEMA

National Watch Center

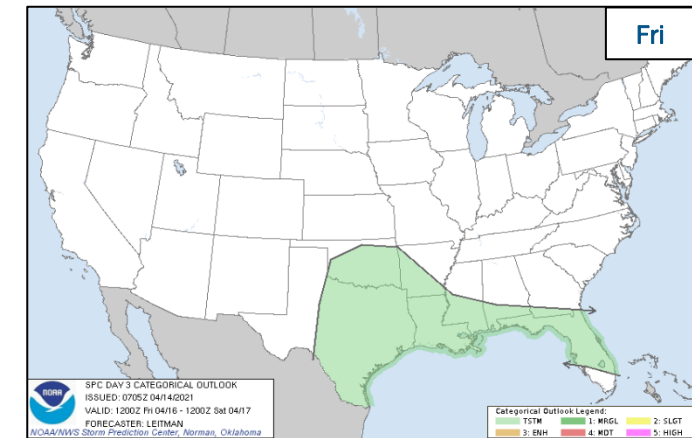
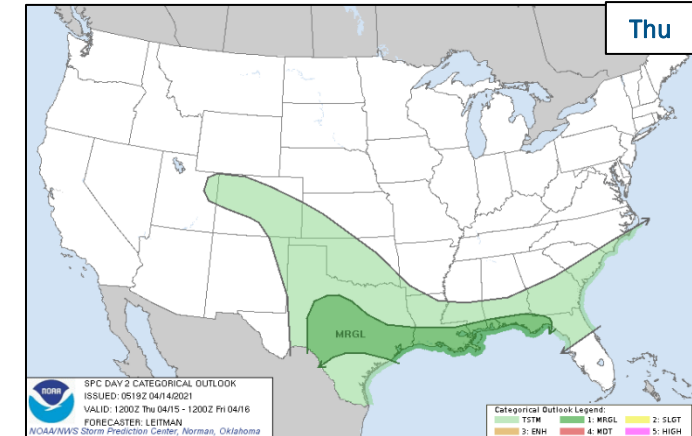
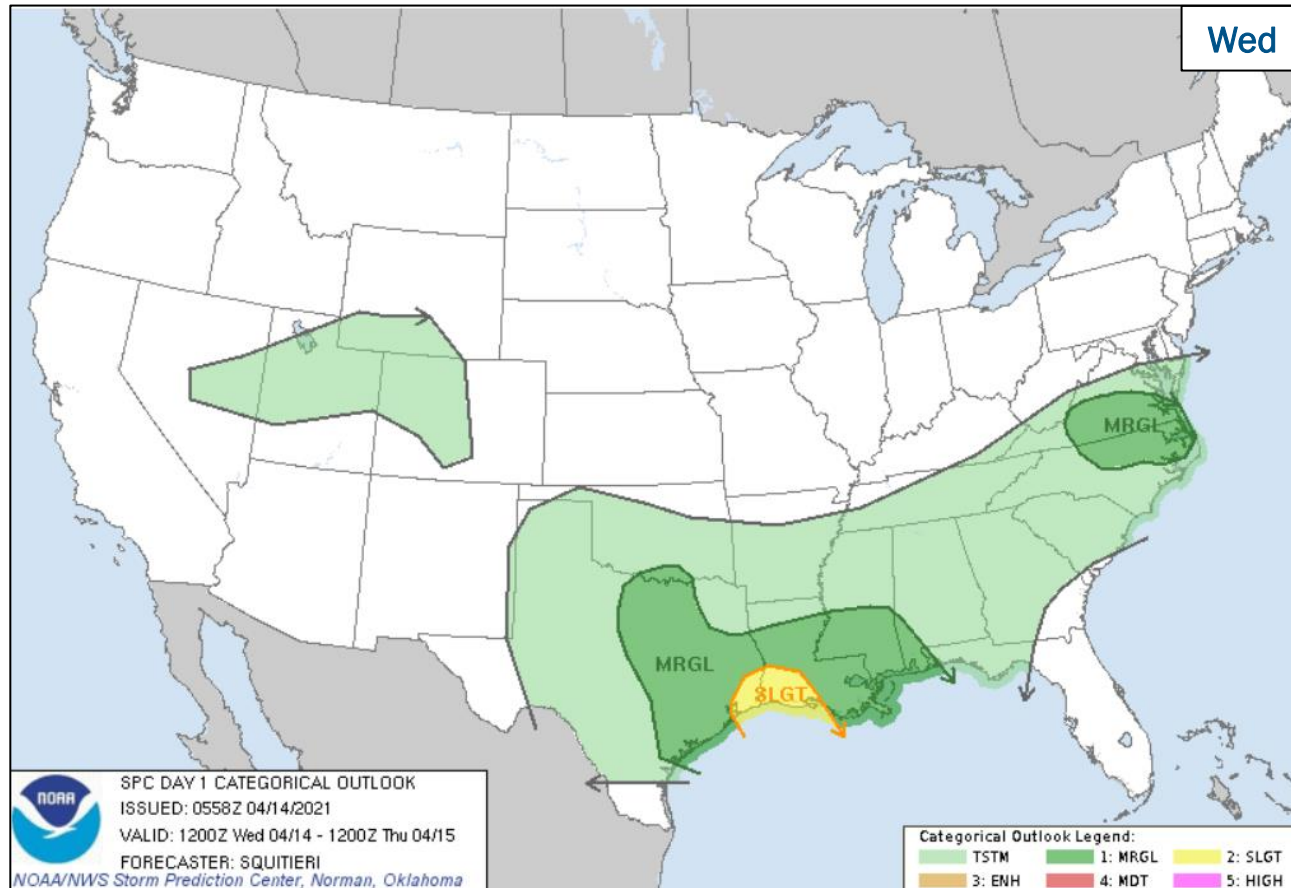
National Weather Forecast



FEMA

National Watch Center

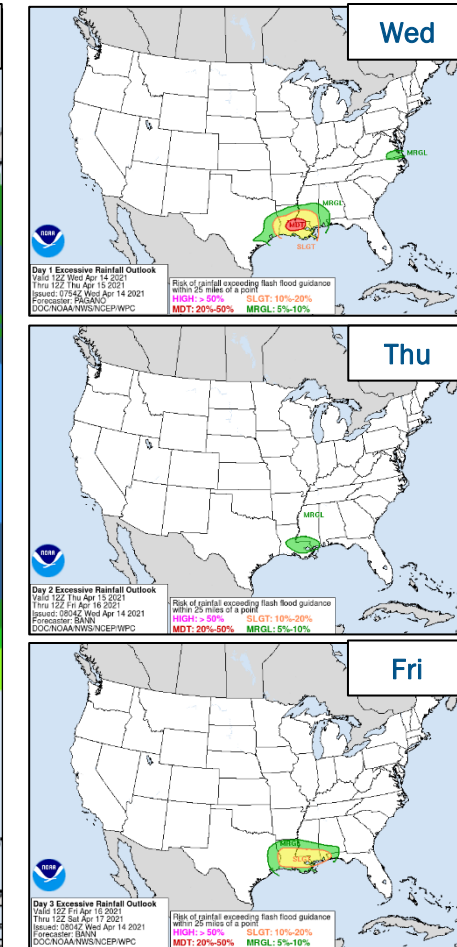
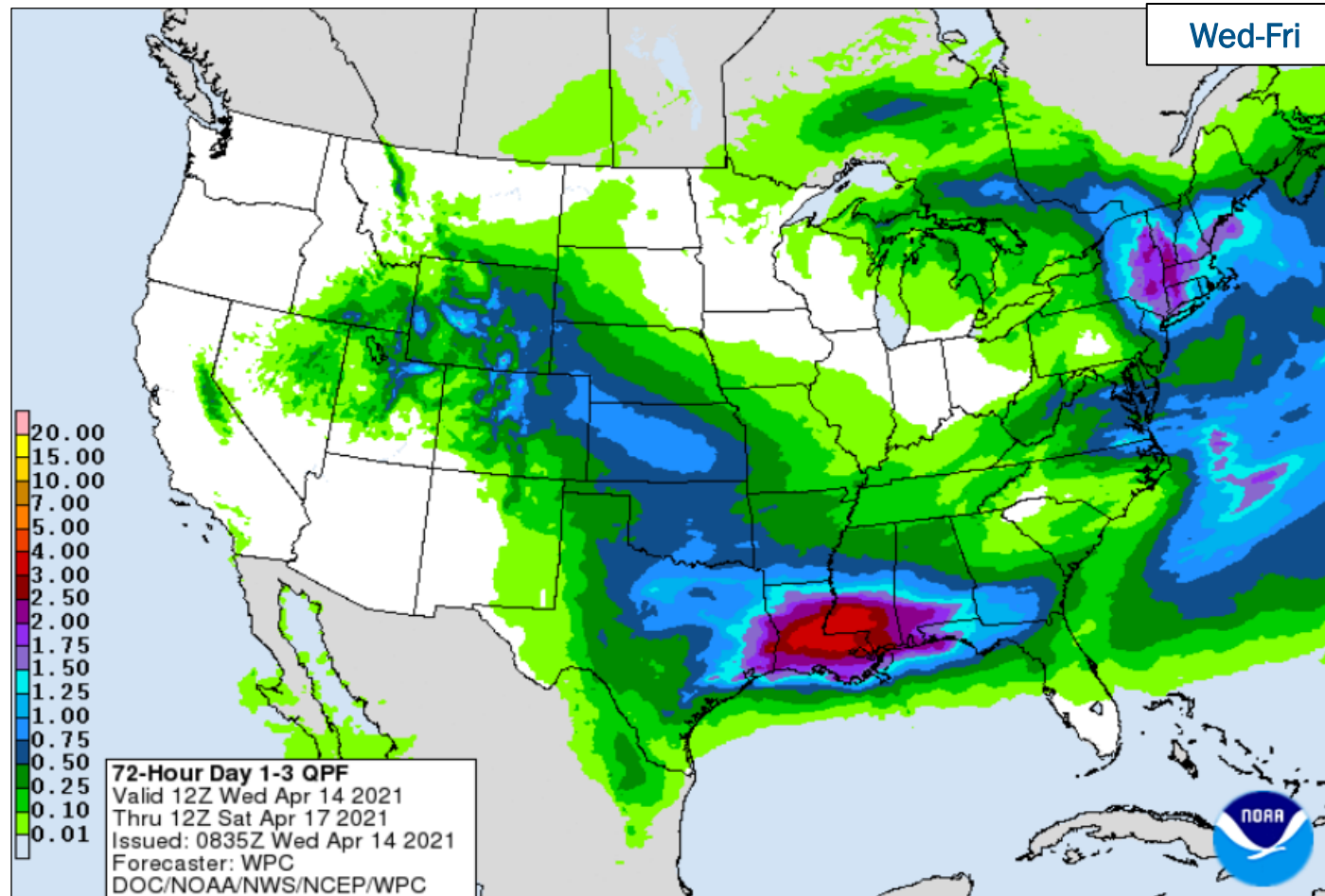
Severe Weather Outlook



FEMA

National Watch Center

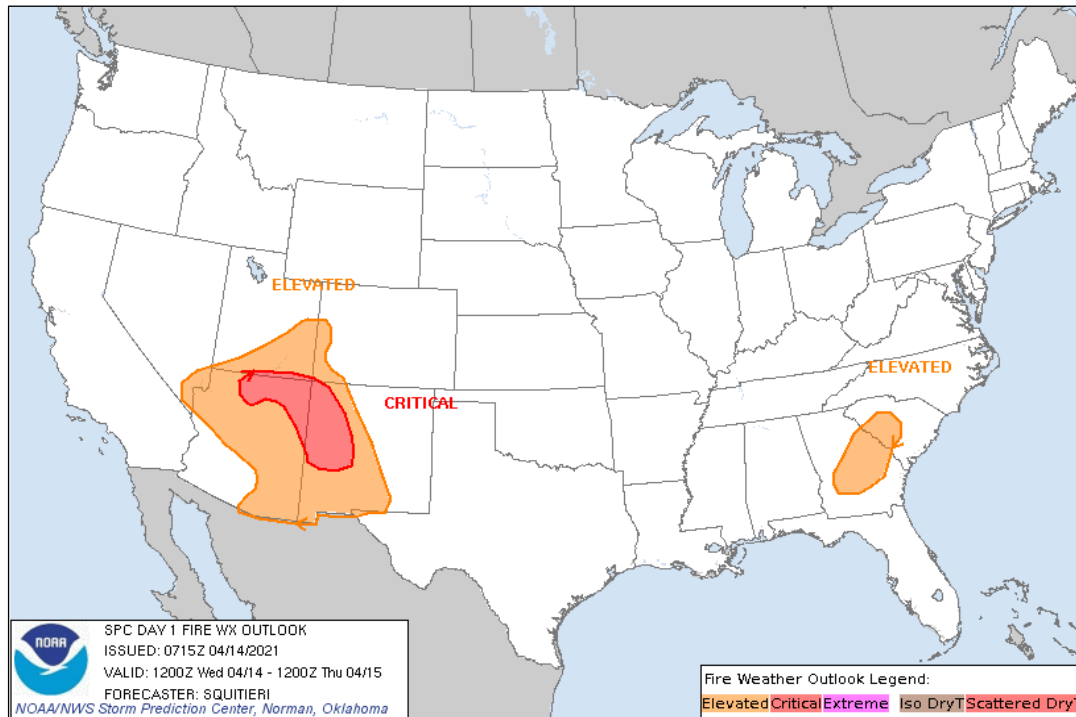
Precipitation & Excessive Rainfall



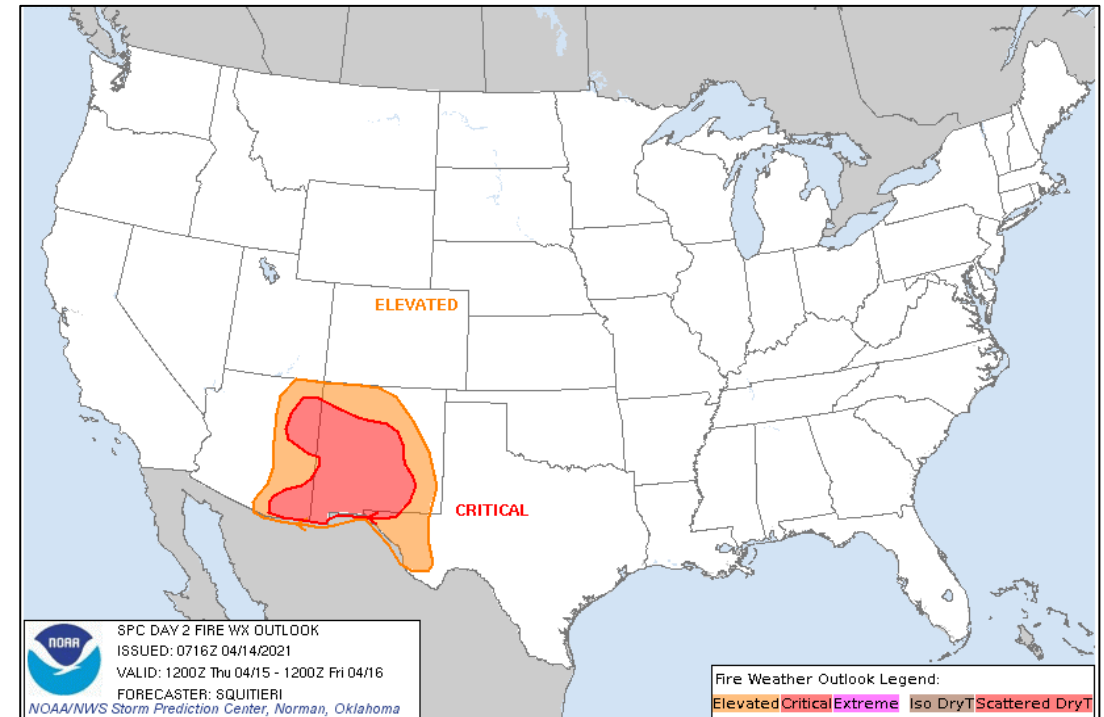
FEMA

National Watch Center

Fire Weather Outlook



Today



Tomorrow



FEMA

National Watch Center

Joint Preliminary Damage Assessments

Region	State / Location	Event	IA	Number of Counties		Start – End
			PA	Requested	Complete	
III	VA	Severe Winter Storms Feb 8-20	IA	0	0	N/A
			PA	41	31	3/22 – TBD
	WV	Flooding Event Feb 27 – Mar 4	IA	4	0	4/14 – TBD
			PA	6	0	4/12 – TBD
IV	KY	Severe Flooding Feb 26 and continuing	IA	9	9	3/6 – 3/19
			PA	47	25	3/22 – TBD
	GA	Severe Storms and Tornadoes Mar 25-26	IA	1	1	4/6 – 4/8
			PA	9	9 (+1)	4/6 – 4/13
	TN	Severe Storms, Tornadoes, Wind, Flash Flooding, and River Flooding Mar 27-28	IA	0	0	N/A
			PA	16	0	4/12 – TBD
IX	HI	Severe Weather, Flooding, and Landslides Mar 8-15	IA	2	2	3/22 – 3/23
			PA	3	0	TBD



FEMA

Declaration Request – West Virginia

Declaration Type: Major Disaster Declaration – WV

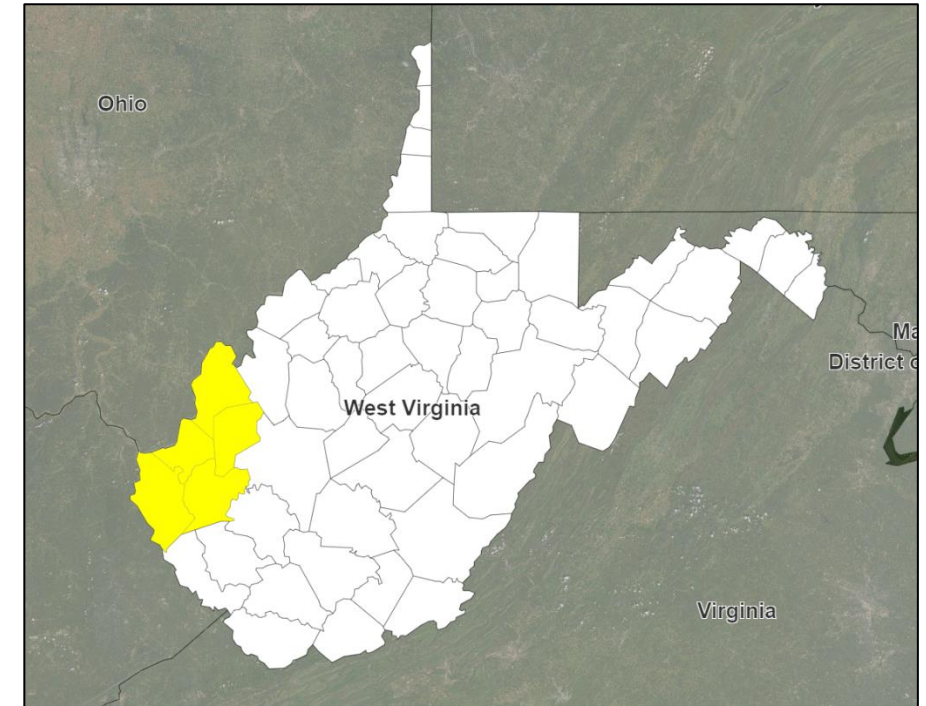
Date Requested: April 12

Incident: Severe winter storm

Incident Period: Feb 10–16

Requesting:

- **PA:** 5 counties
- **Hazard Mitigation:** Statewide



■ PA



FEMA

National Watch Center

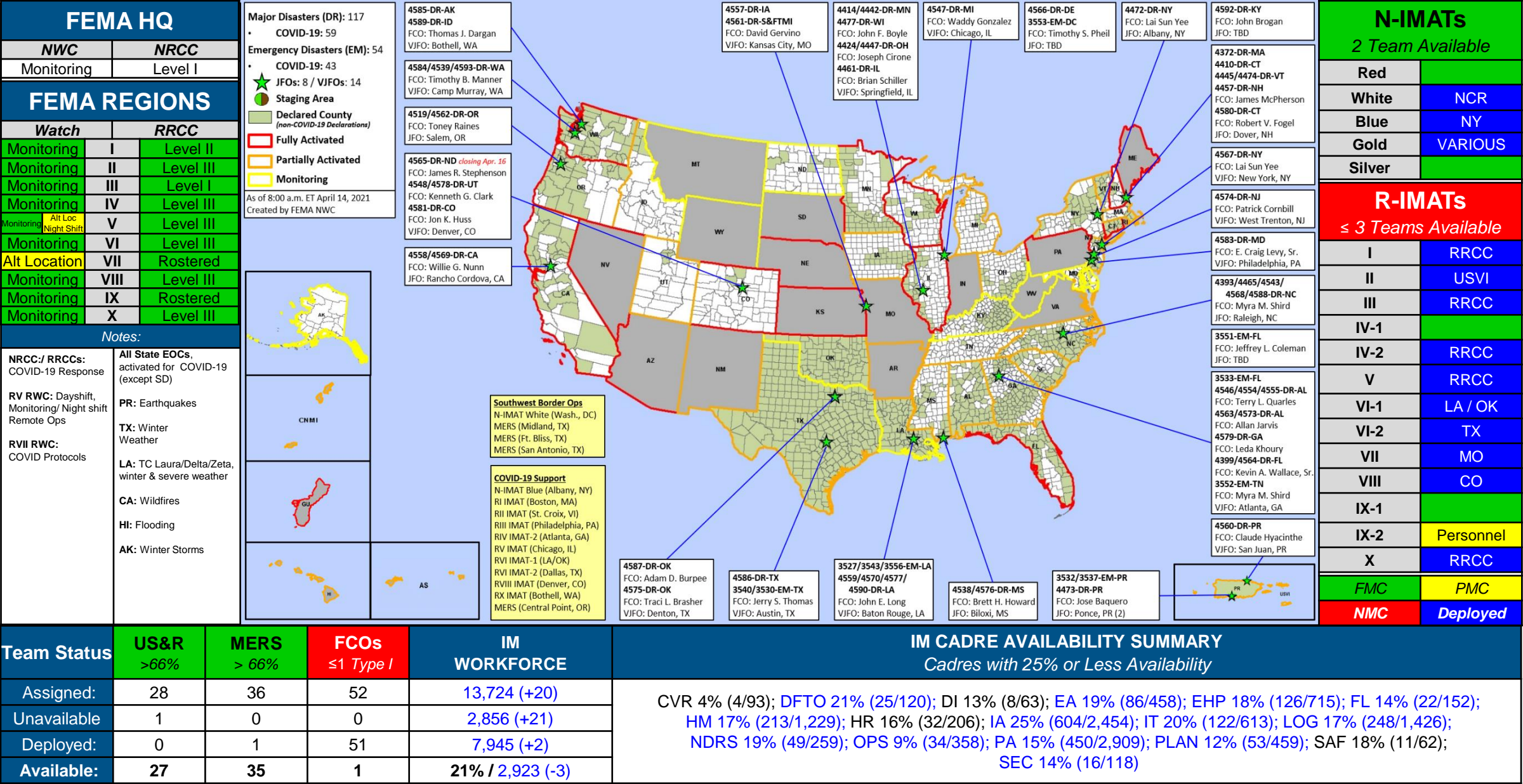
Declaration Requests in Process – 5

State / Tribe / Territory – Incident Description	Type	IA	PA	HM	Requested
NJ – Severe Winter Storm and Snowstorm	DR		X	X	3/29
TN – Severe Winter Storm	DR		X	X	4/1
KY – Severe Storms, Flooding, Landslides, and Mudslides	DR	X	X	X	4/6
OR – Severe Winter Storm	DR		X	X	4/7
WV – Severe Winter Storm	DR		X	X	4/12



FEMA

FEMA Common Operating Picture





FEMA

Helping people before, during, and after disasters.

[Click here to subscribe to this briefing.](#)