

FEMA National Watch Center

# Daily Operations Briefing

Thursday, May 27, 2021

8:30 a.m. ET



**FEMA**

# National Current Ops / Monitoring

---

## New Significant Incidents / Ongoing Ops

- COVID-19
- Severe Weather – Southern and Central Plains

## Hazard Monitoring

- Tropical Activity:
  - Eastern Pacific: Disturbance 1: Low (30%); Disturbance 2: Low (10%)
- Severe Thunderstorms – Central/Southern Plains, Mississippi Valley
- Heavy Rains/Flash Flooding – Central Plains

## Disaster Declaration Activity

- None

## Event Monitoring

- None



**FEMA**

# Severe Weather – Southern and Central Plains

**Current Situation:** Strong to severe storms began to develop late Wednesday afternoon across northern Texas, western Kansas, and western Nebraska. There were numerous reports of high winds, large hail and preliminary reports of 25 tornado touchdowns.

## **Impacts:**

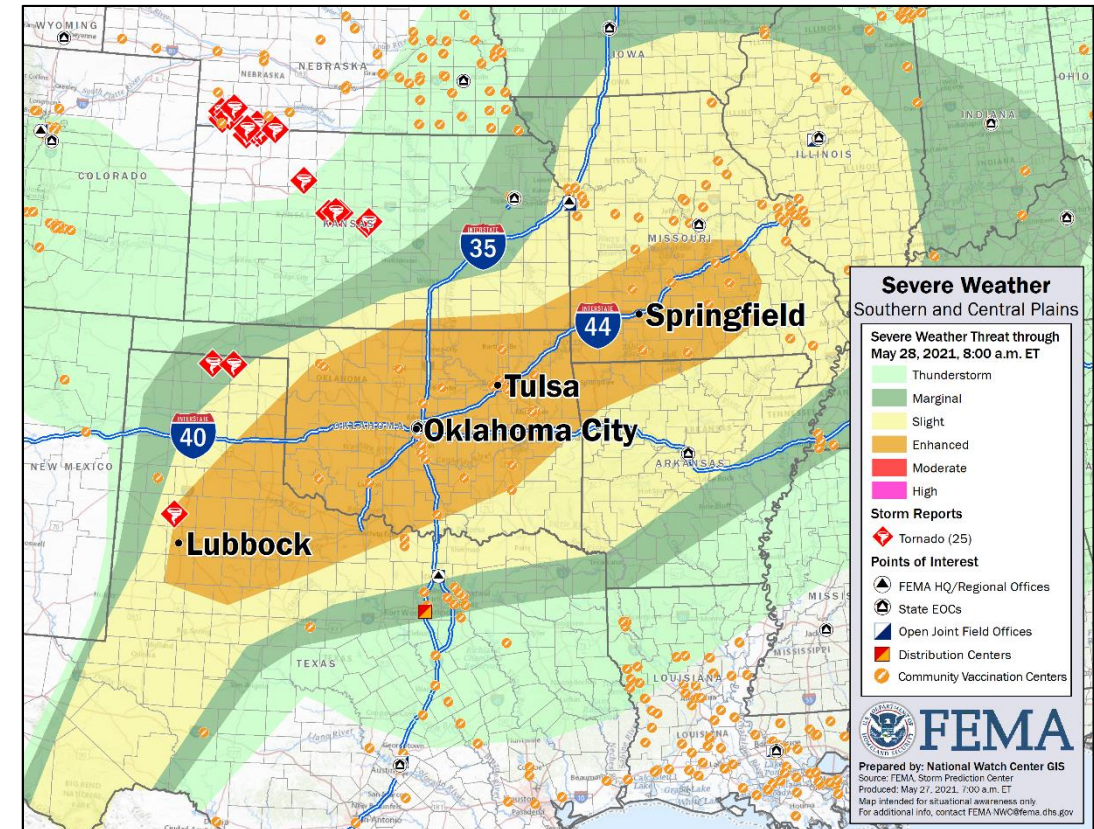
- Some roof damage, downed trees, and powerlines
- Minimal power outages reported
- No injuries or fatalities

## **State / Local Response:**

- All affected State EOCs are monitoring
- No requests for FEMA assistance

## **FEMA / Federal Response :**

- All affected regional RWCs are monitoring
- NRCC is at Level III (COVID-19)
- Backup Regional IMATs are VII, VI (1), and IV (1)
- NWC is monitoring



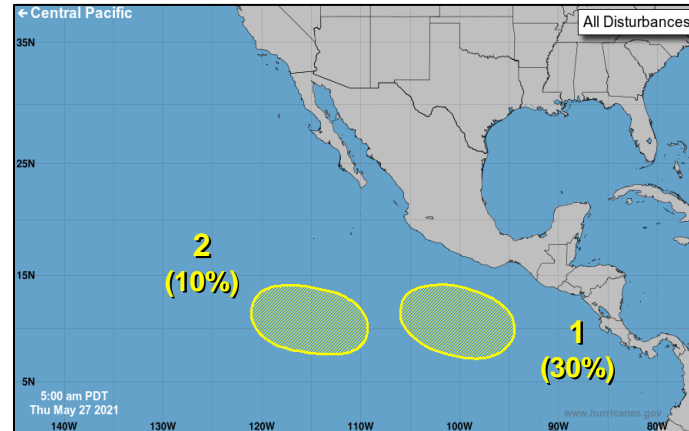
FEMA

# Tropical Outlook – Five Day

## Central Pacific



## Eastern Pacific



## Atlantic



### Disturbance 1 (as of 8:00 a.m. ET)

- Expected to form several hundred miles S of coast of Mexico by the weekend
- Moving W at 5-10 mph
- Conditions favorable for gradual development
- 48-hour formation chance: Low (near 0%)
- 5-day formation chance: Low (30%)

### Disturbance 2 (as of 8:00 a.m. ET)

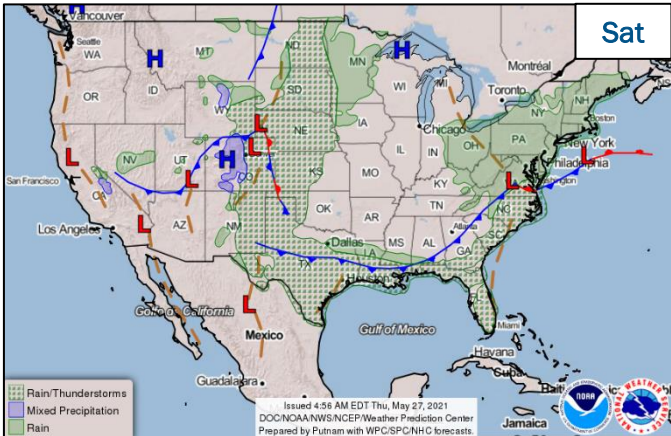
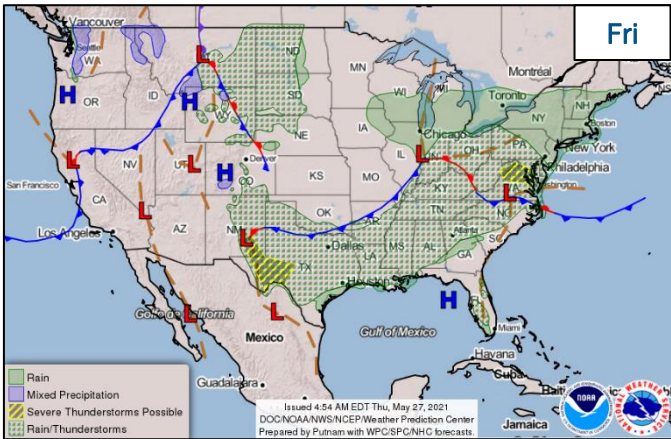
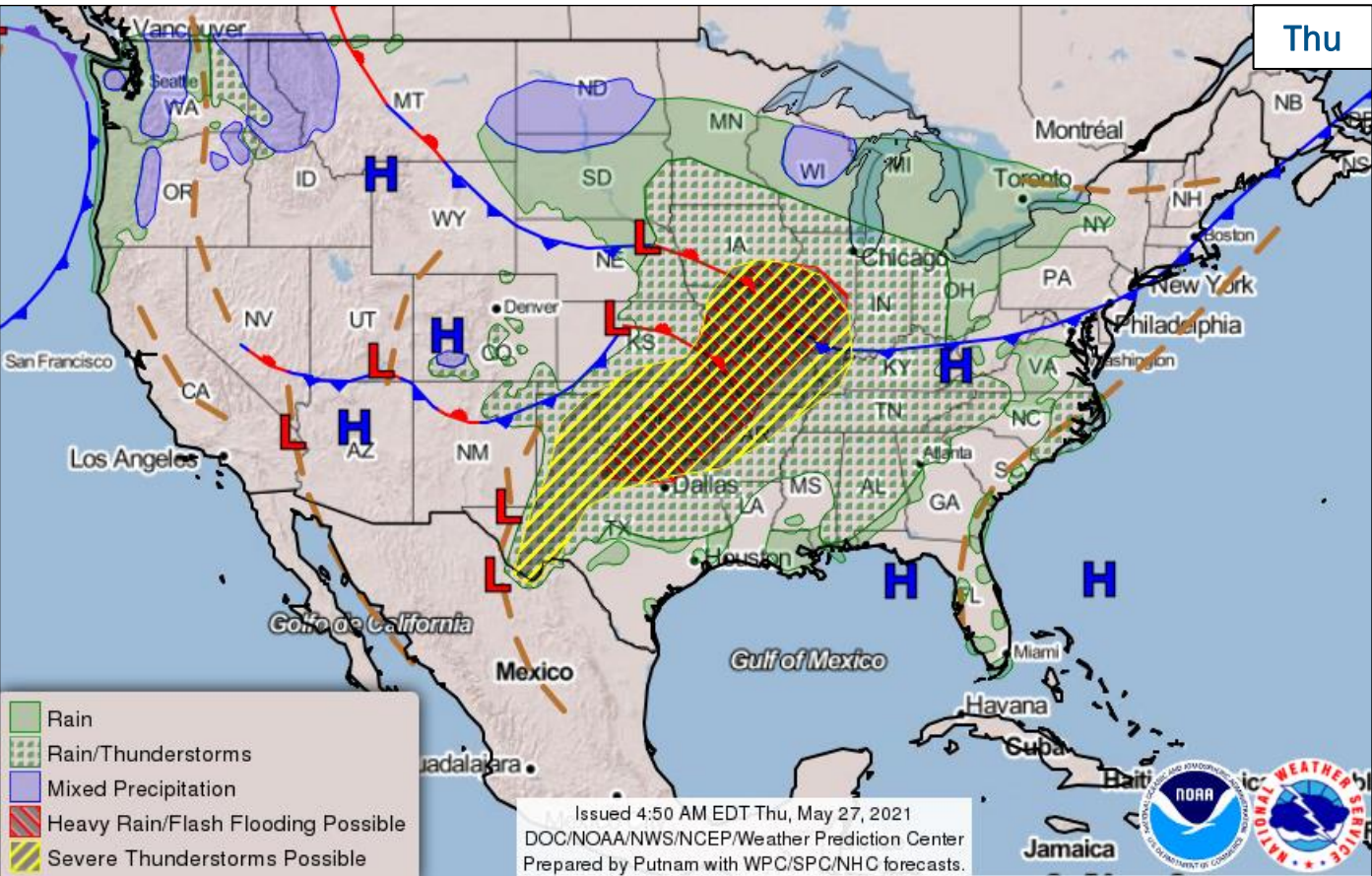
- Could form about a thousand miles S of southern tip of the Baja California peninsula in a few days
- Moving W to WNW at 5-10 mph
- Conditions marginally conducive for development
- 48-hour formation chance: Low (near 0%)
- 5-day formation chance: Low (10%)



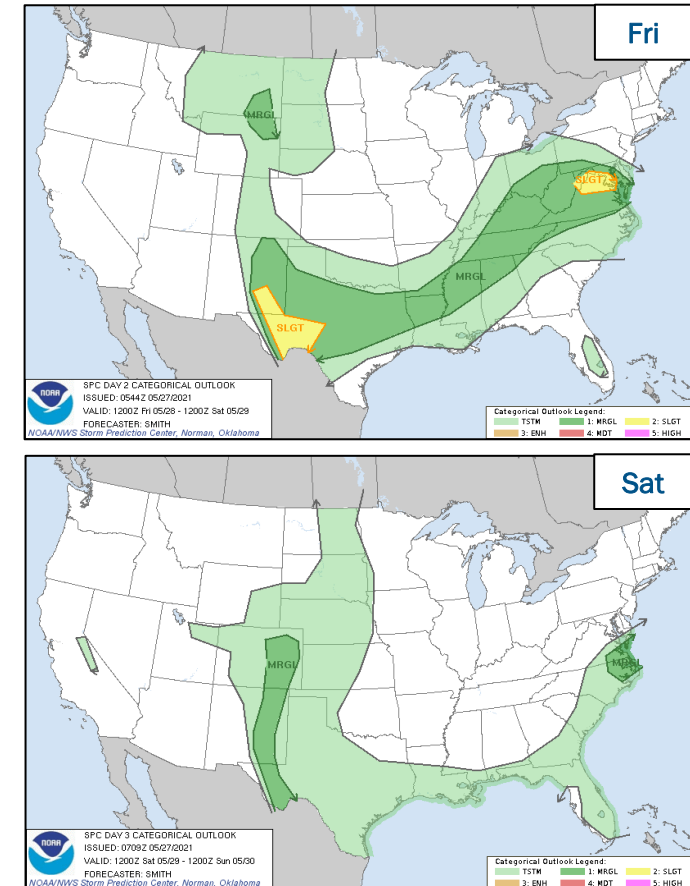
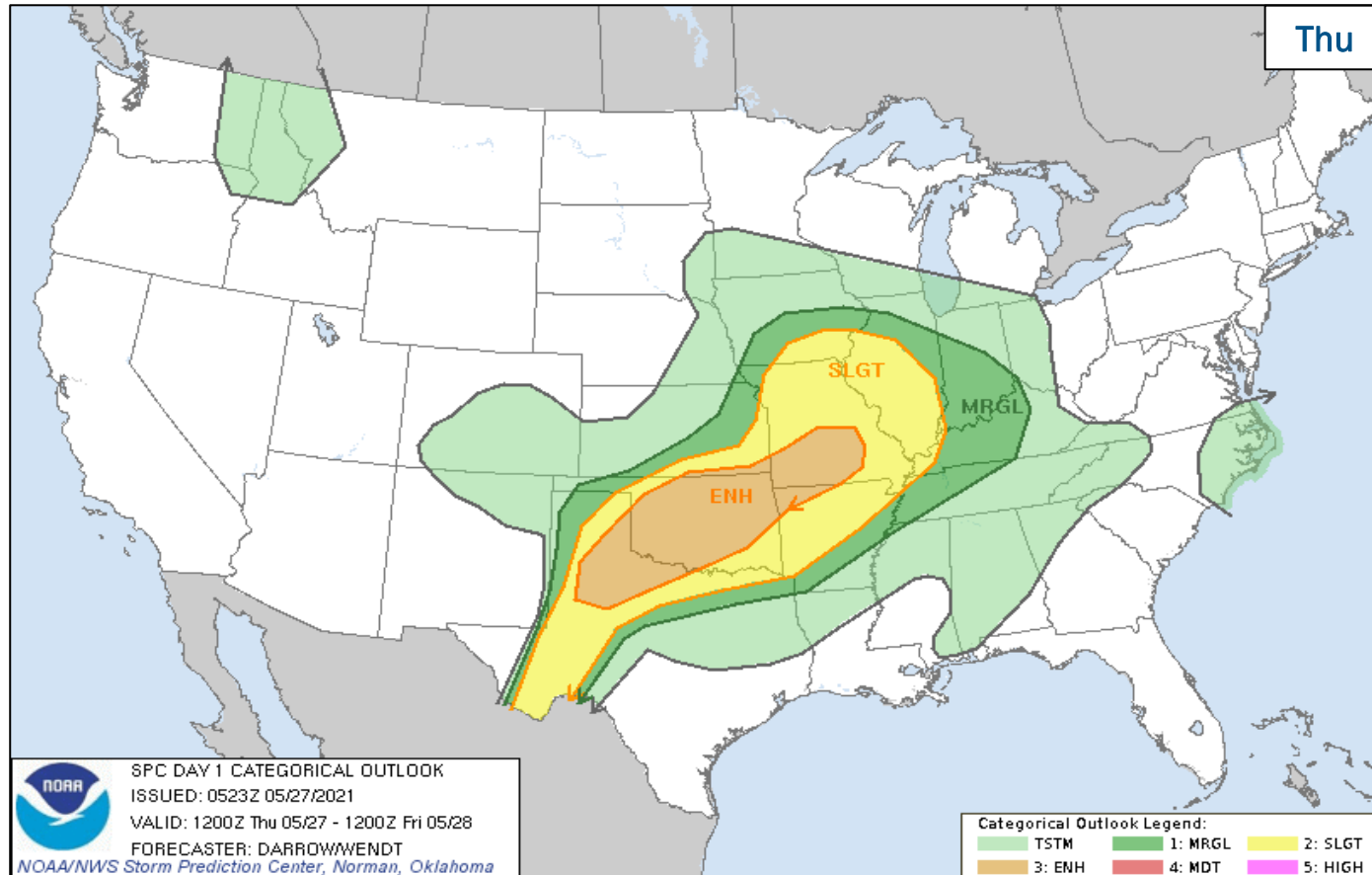
FEMA



# National Weather Forecast



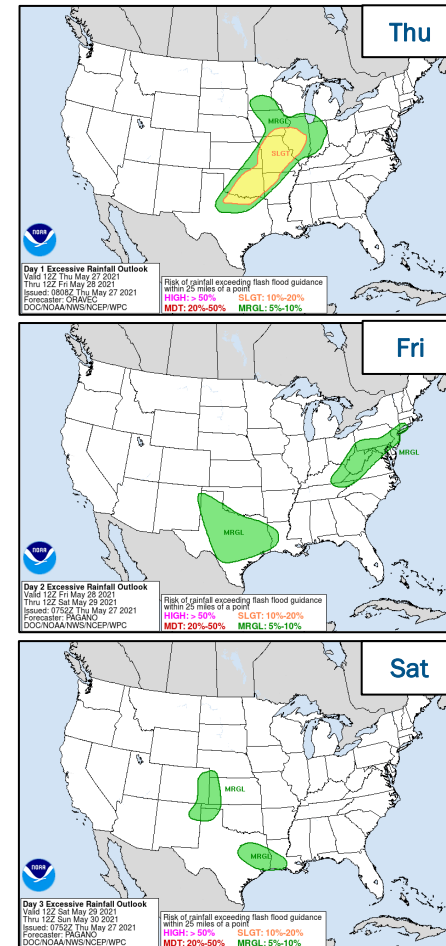
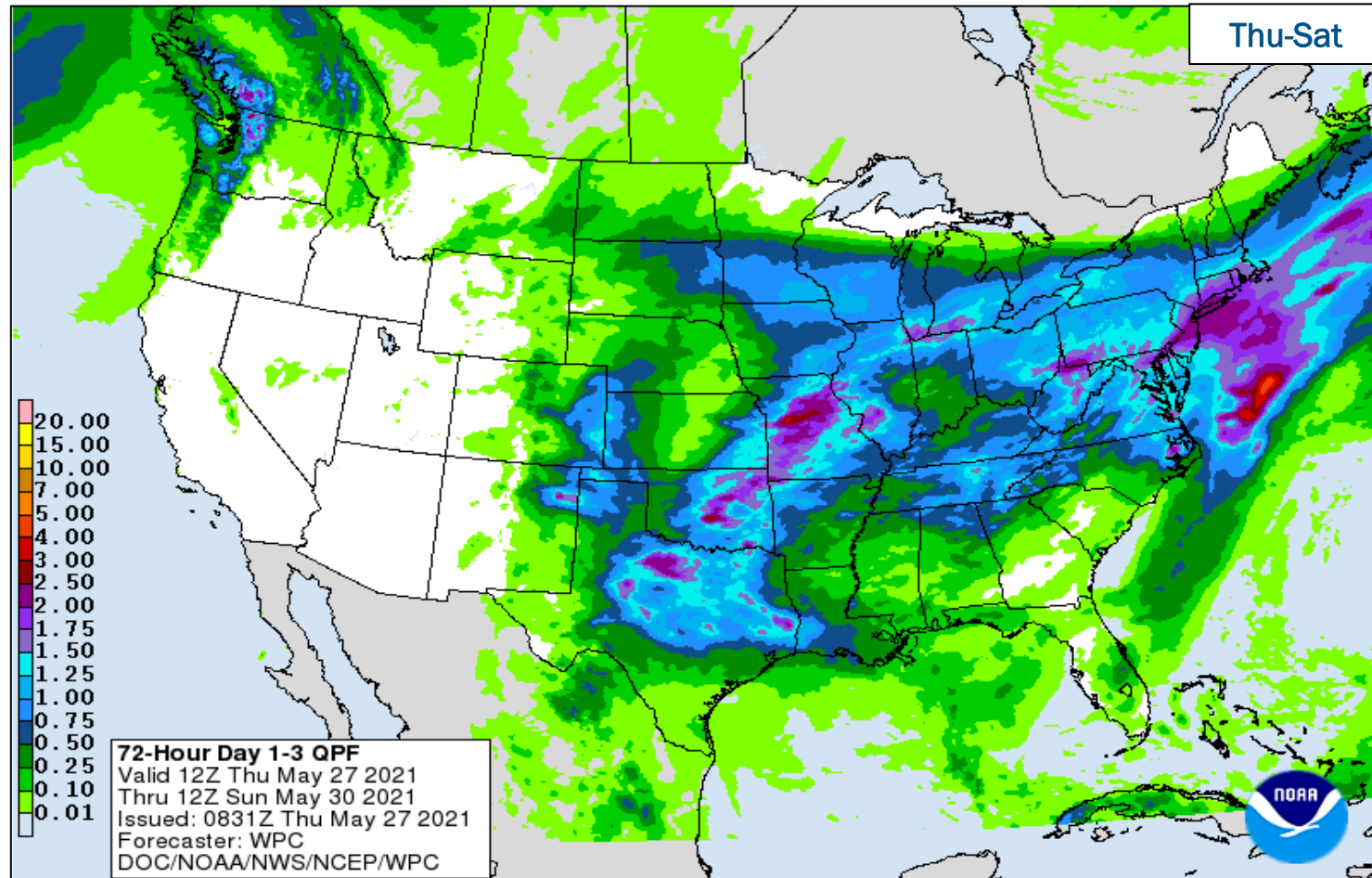
# Severe Weather Outlook



FEMA

National Watch Center

# Precipitation & Excessive Rainfall

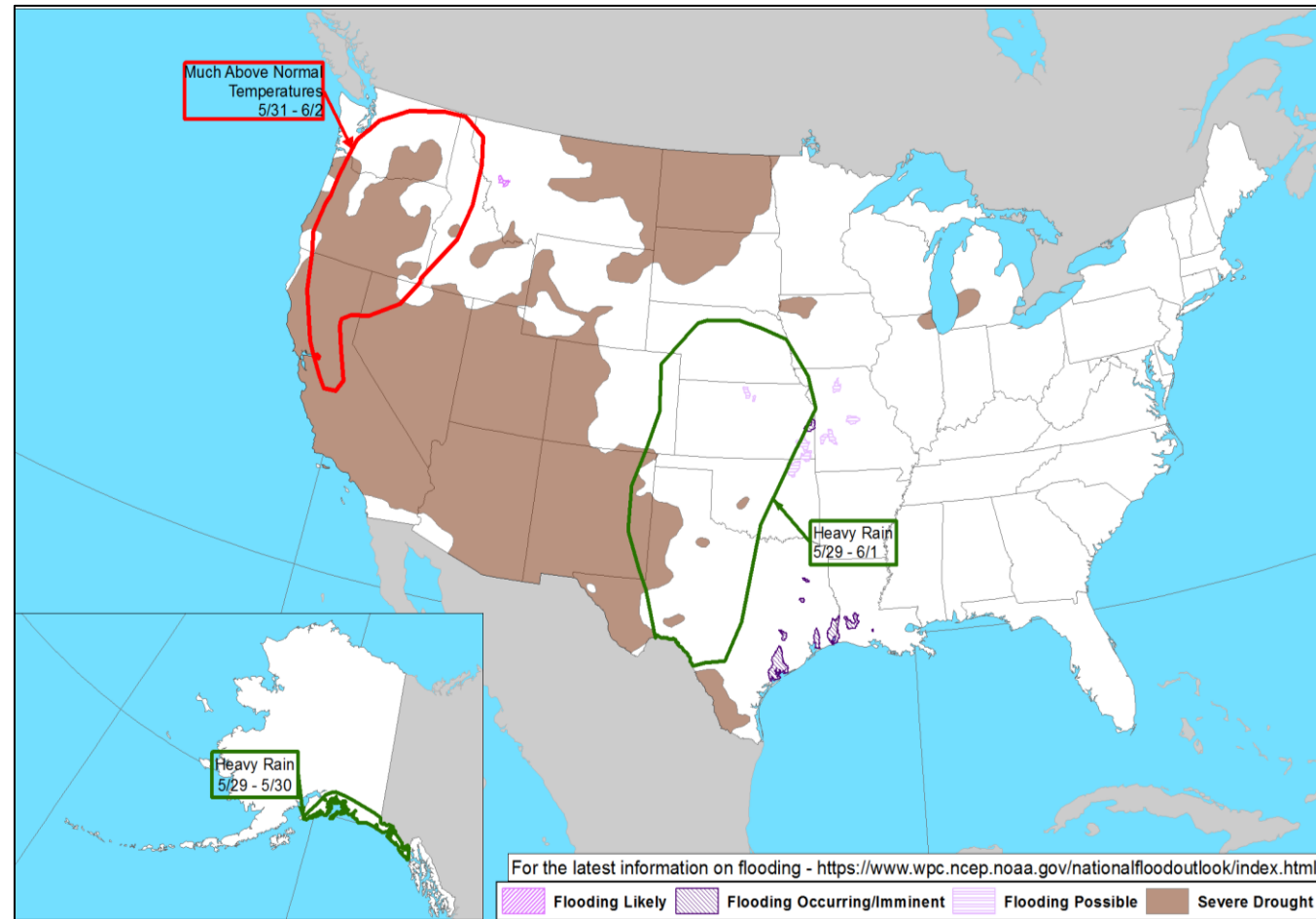


FEMA

National Watch Center



# Hazards Outlook – May 29–Jun 2



FEMA



# Joint Preliminary Damage Assessments

Region	State / Location	Event	IA	Number of Counties		Start – End
			PA	Requested	Complete	
VI	AR	Severe Weather, Tornadoes, and Flooding Apr 28-29	IA	0	0	N/A
			PA	13	0	5/19 – TBD



**FEMA**

# Declaration Requests in Process – 2

State / Tribe / Territory – Incident Description	Type	IA	PA	HM	Requested
WY – Severe Winter Storm and Snowstorm	DR		X	X	5/7
TX – Hurricane Hanna – Appeal	DR		X	X	5/12



**FEMA**

# FEMA Common Operating Picture

[illegible]



# FEMA

Helping people before, during, and after disasters.

*[Click here to subscribe to this briefing.](#)*