

FEMA National Watch Center

Daily Operations Briefing

Monday, August 2, 2021

8:30 a.m. ET



FEMA

National Current Ops / Monitoring

New Significant Incidents / Ongoing Ops

- Wildfires – Western U.S. and Hawaii

Hazard Monitoring

- Heavy Rain and flash flooding – Northern Intermountain, the Rockies, and Southern Plains to the Southeast
- Tropical Activity:
 - Eastern Pacific:
 - Hurricane Hilda (CAT 1)
 - Tropical Depression Ten-E
 - Disturbance 1: Medium (50%)

Disaster Declaration Activity

- Declaration Request – MT
- FMAG Approval – HI

Event Monitoring

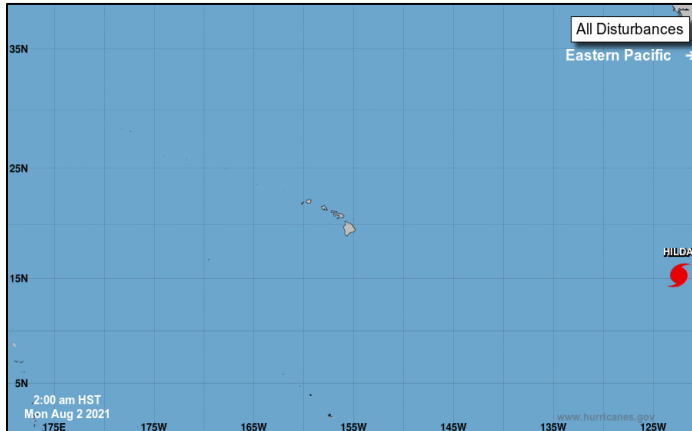
- None



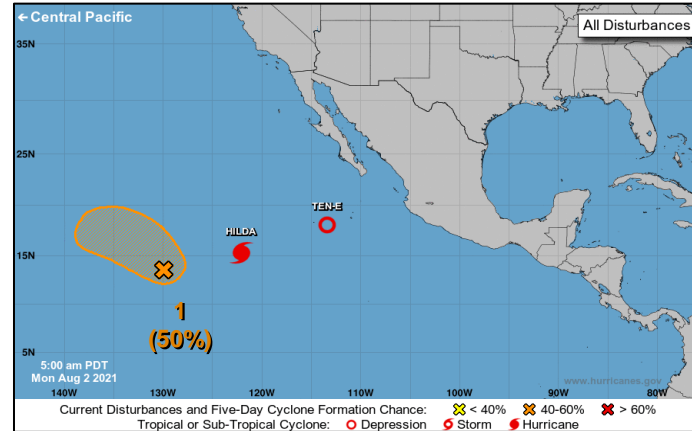
FEMA

Tropical Outlook – Five Day

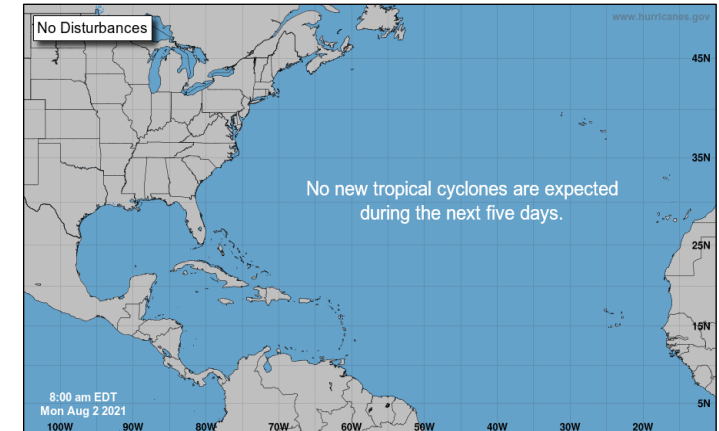
Central Pacific



Eastern Pacific



Atlantic



Disturbance 1 (as of 5:00 a.m. ET)

- 1400 miles WSW of the southern tip of Baja California
- Regeneration of this system into a tropical depression could occur in the next couple days
- Formation chance – 48-hour: Med (50%); 5-day: Med (50%)

Tropical Depression Ten-E (Advisory #3 as of 5:00 a.m. ET)

- See next slide

Hurricane Hilda (CAT 1) (Advisory #11 as of 5:00 a.m. ET)

- See next slide



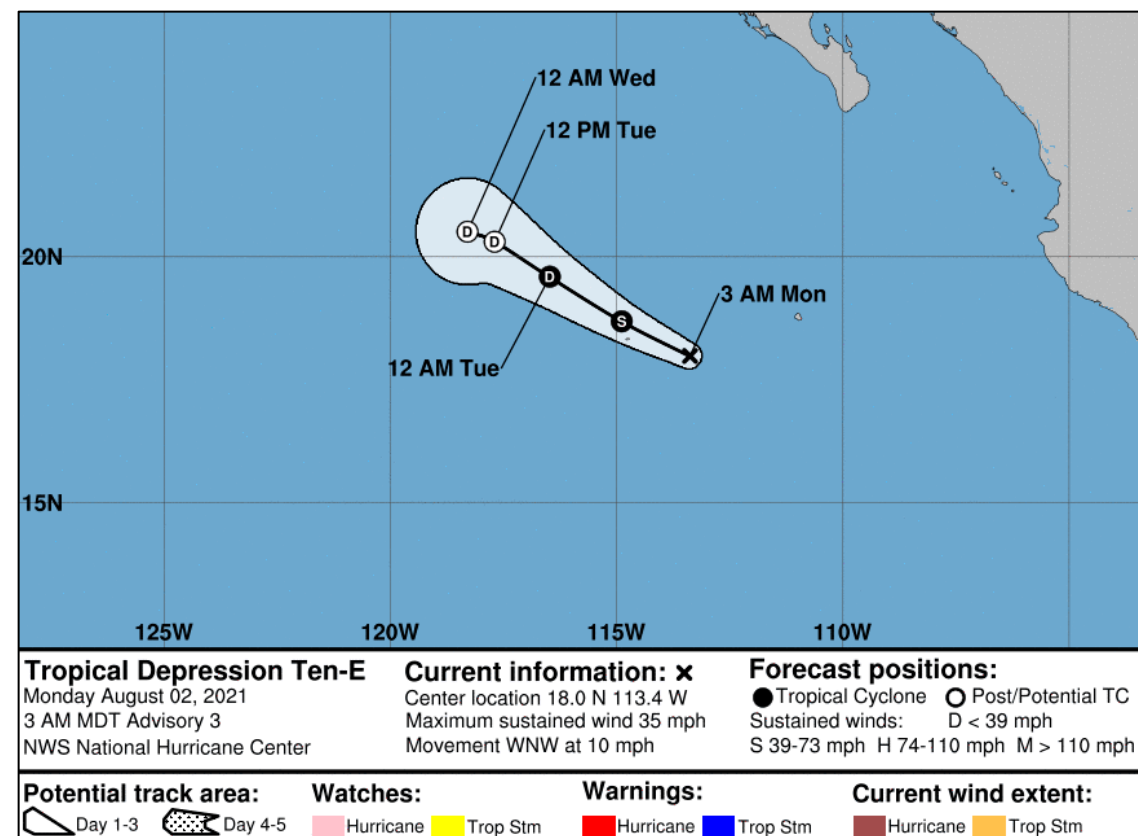
FEMA

National Watch Center

Tropical Depression Ten-E – Eastern Pacific

Situation: *(Advisory #3 as of 5:00 a.m. ET)*

- 405 miles SW of the southern tip of Baja California
- Moving WNW at 10 mph
- Maximum sustained winds 35 mph
- Some strengthening possible today; weakening is likely to begin tomorrow



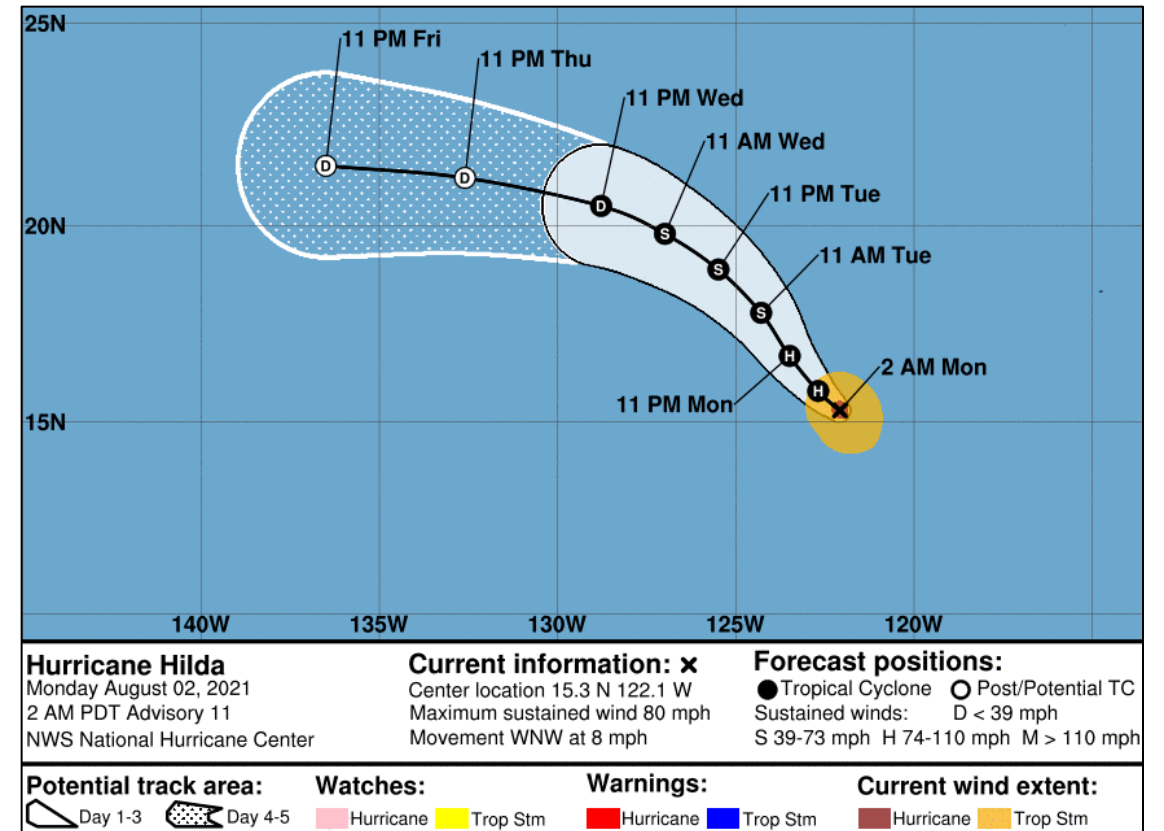
FEMA

National Watch Center

Hurricane Hilda (CAT 1) – Eastern Pacific

Situation: (Advisory #11 as of 5:00 a.m. ET)

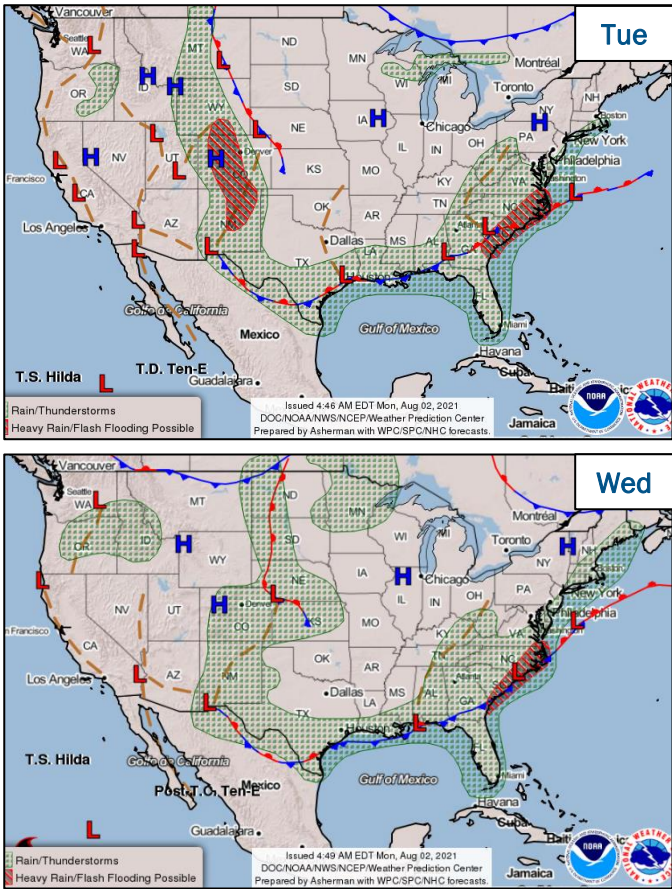
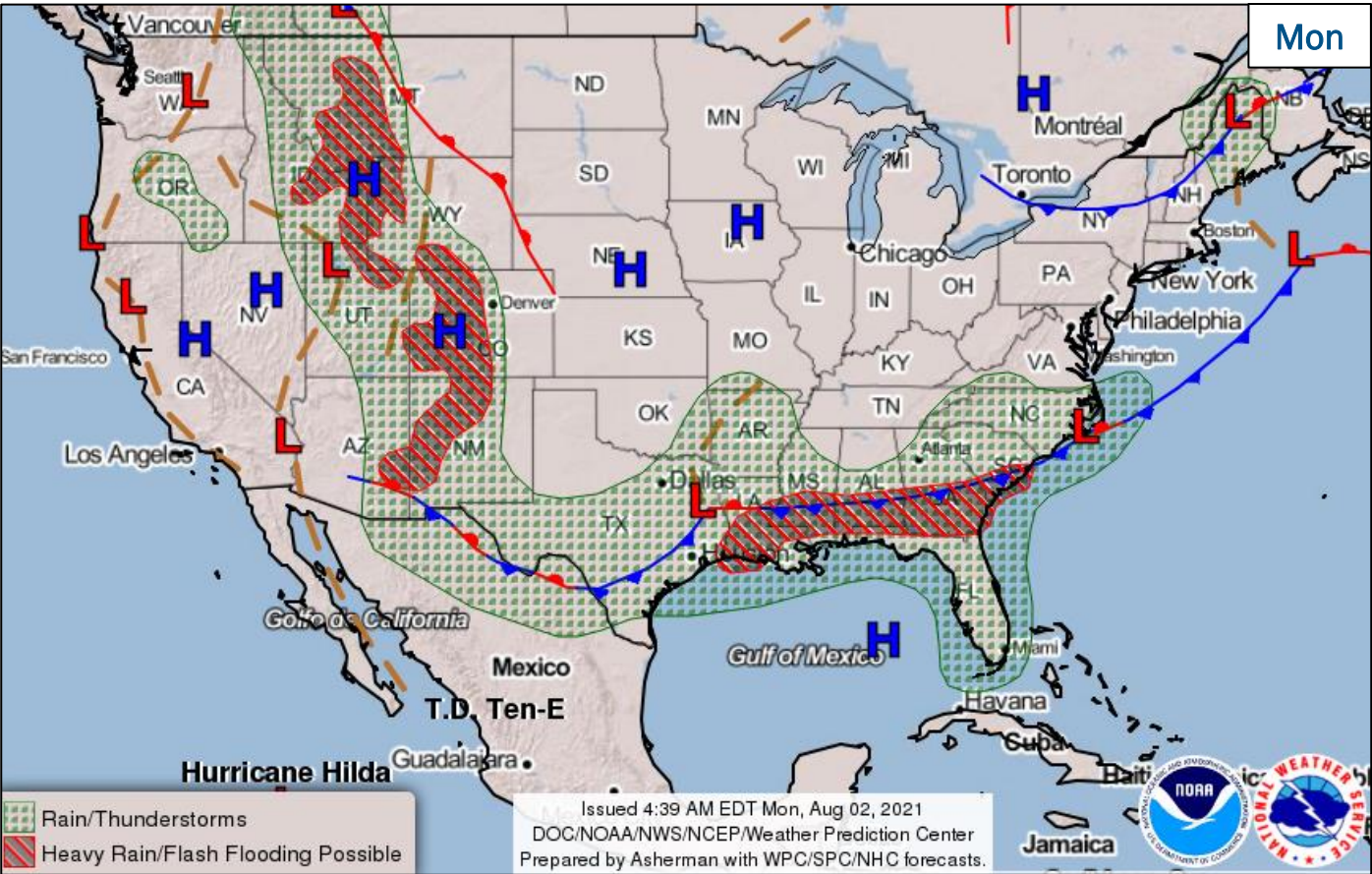
- 955 miles WSW of the southern tip of Baja California
- Moving WNW at 8 mph
- Maximum sustained winds 80 mph
- Forecast to weaken to a tropical storm early tomorrow
- Hurricane force winds extend outward 15 miles; tropical storm force winds extend 90 miles



FEMA

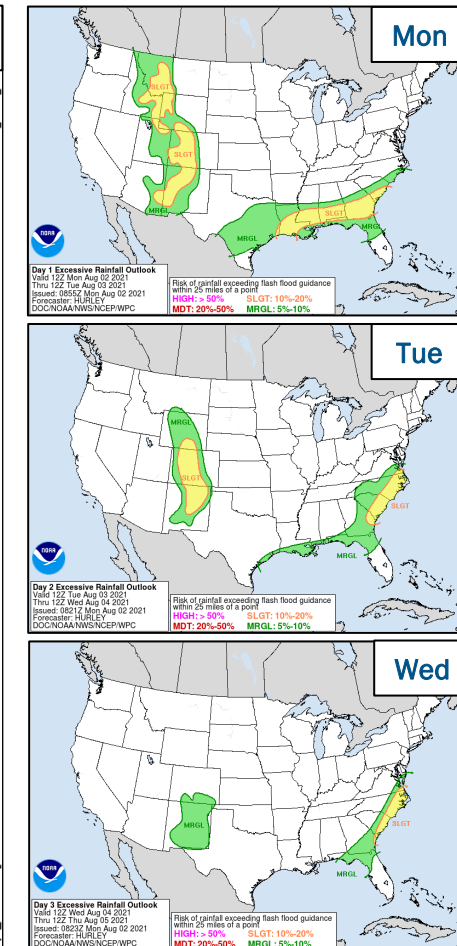
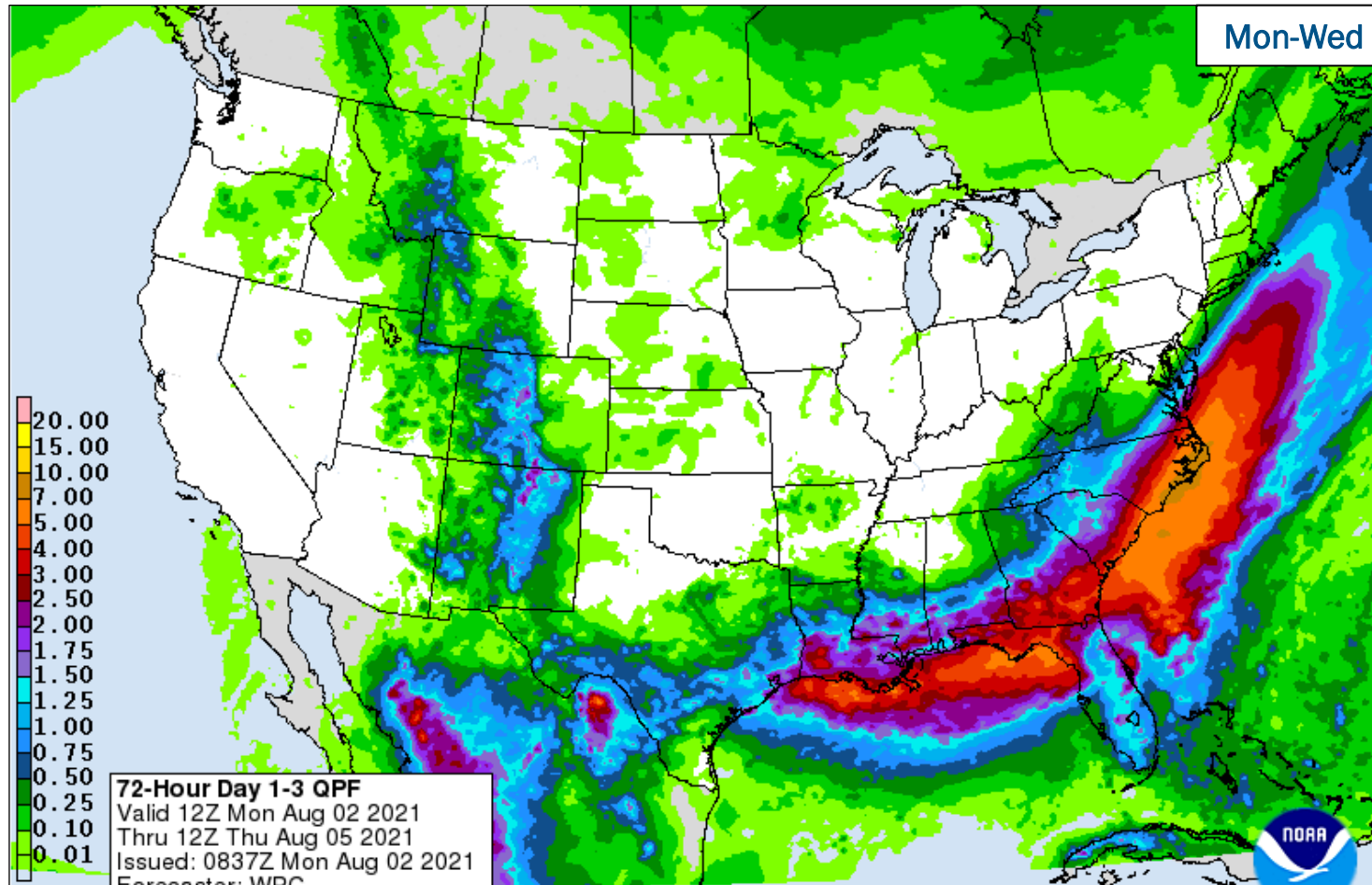
National Watch Center

National Weather Forecast



FEMA

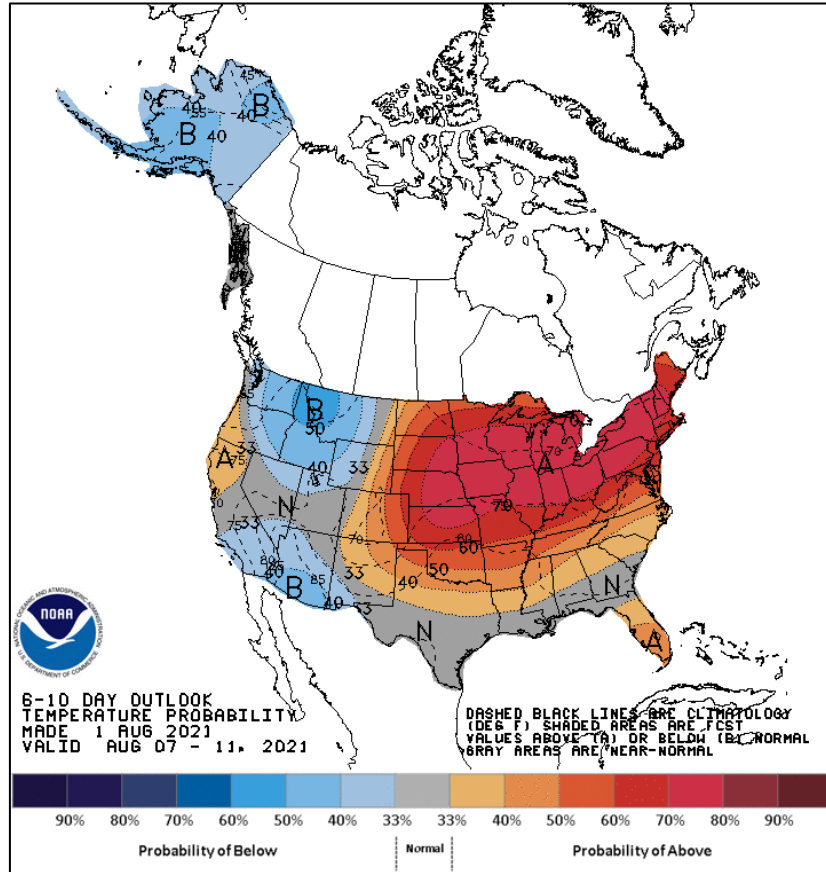
Precipitation & Excessive Rainfall



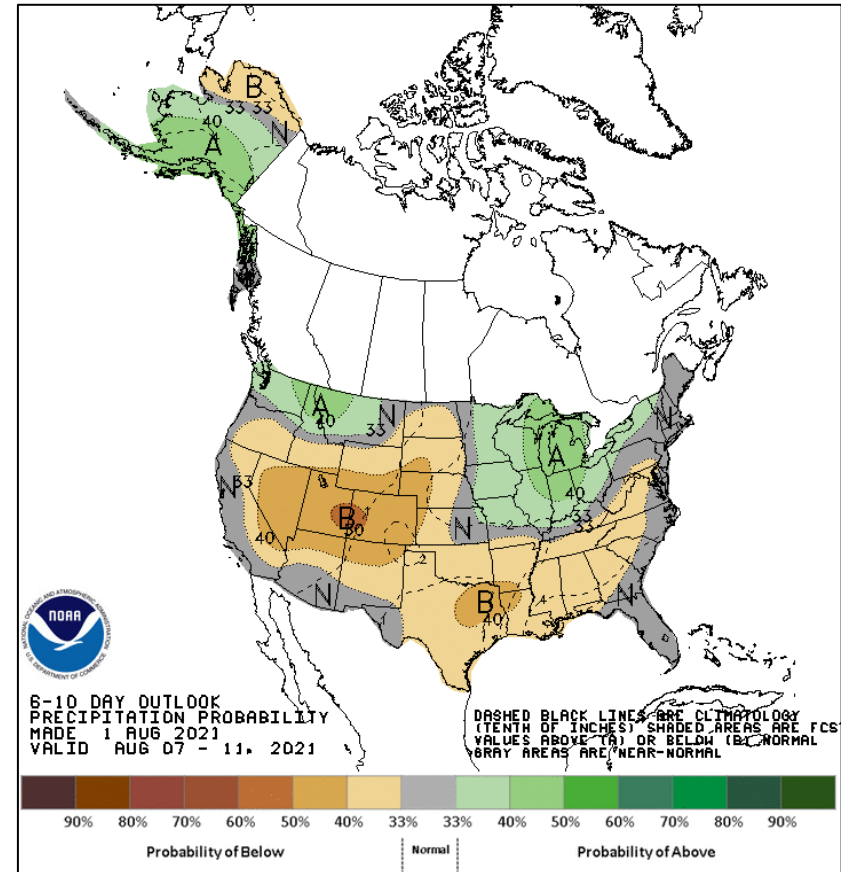
FEMA

National Watch Center

Long Range Outlooks – Aug 7-11



6-10 Day Temperature Probability



6-10 Day Precipitation Probability



FEMA

National Watch Center

Mana Road Fire – Hawaii

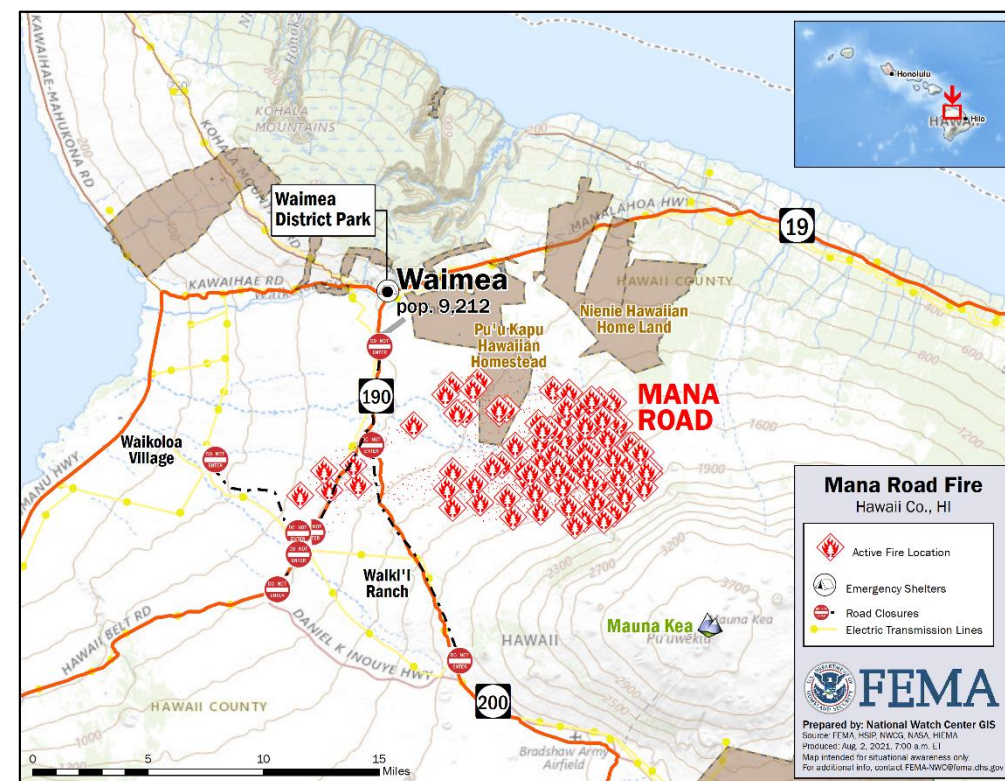
Fire Name (County, ST)	FMAG #	Acres Burned	Percent Contained	Evacuations	Structures (Homes / Other)			Fatalities / Injuries
					Threatened	Damaged	Destroyed	
Mana Road (Hawaii, HI)	5404-FM-HI	40,000	0%	M: 7,000	H: 140	H: 0	H: 1	0 / 0
				V: 0	O: 10	O: 0	O: 0	

Situation:

The fire began Jul 30 and has burned 40k acres near the community of Waimea on the big island of Hawaii. The fire threatens homes, power lines, and Highway 190 and Old Saddle Road are closed.

Response:

- FMAG approved Aug 1
- Region IX RWC and the NWC are monitoring

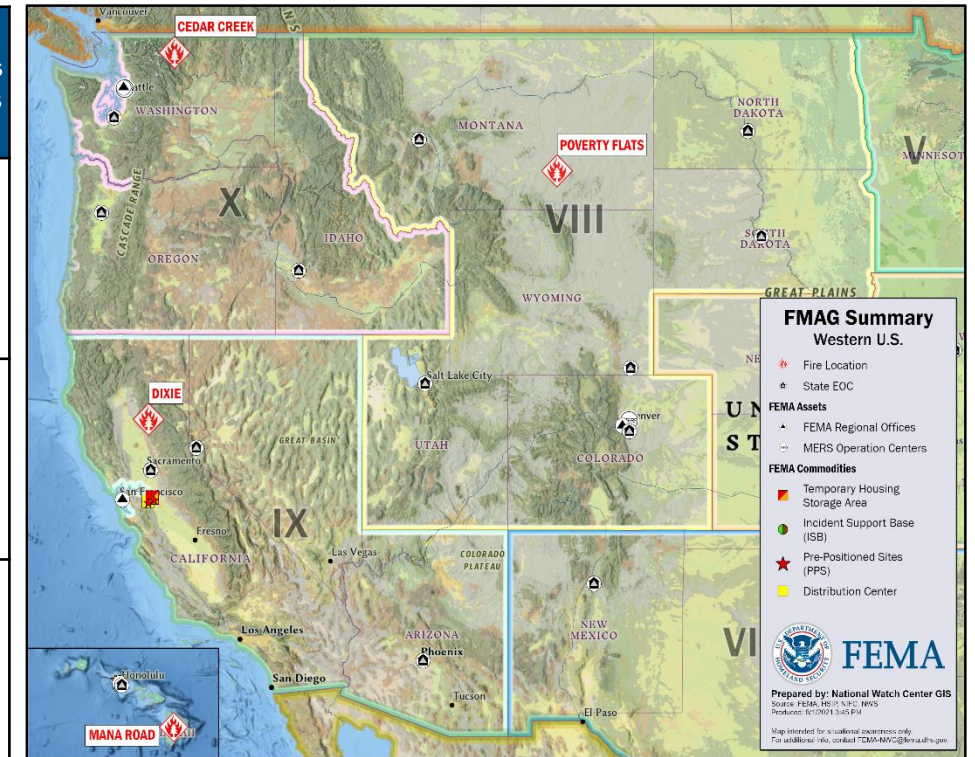


FEMA

National Watch Center

Wildfire Summary

Fire Name (County, ST)	FMAG #	Acres Burned	Percent Contained	Evacuations	Structures (Homes / Other)			Fatalities / Injuries
					Threatened	Damaged	Destroyed	
Cedar Creek (Okanogan, WA)	5401-FM WA	48,771 (+7,629)	23% (+6%)	M: 550	H: 1,169	H: 0	H: 0	0 / 6
				V: 0	O: 0	O: 0	O: 2	
Dixie (Plumas, CA)	5400-FM CA	248,570 (+4,182)	33% (+3%)	M: 9,044 (-7,544)	H: 3,043 (-7,272)	H: 5	H: 45 (+1)	0 / 0
				V: 0	O: 120	O: 4	O: 22	
Poverty Flats (Big Horn, MT & Crow Tribe)	5403-FM- MT	65,941	60% (+40%)	M: 0	H: 5	H: 0	H: 0	0/0
				V: 0	O: 10	O: 0	O: 1	



(Evacuations: M = Mandatory / V = Voluntary; Structures: H = Homes and Mixed Commercial/Residential / O = Non-residential Commercial/Other Minor Structures)



FEMA

National Watch Center

Dixie Fire – California

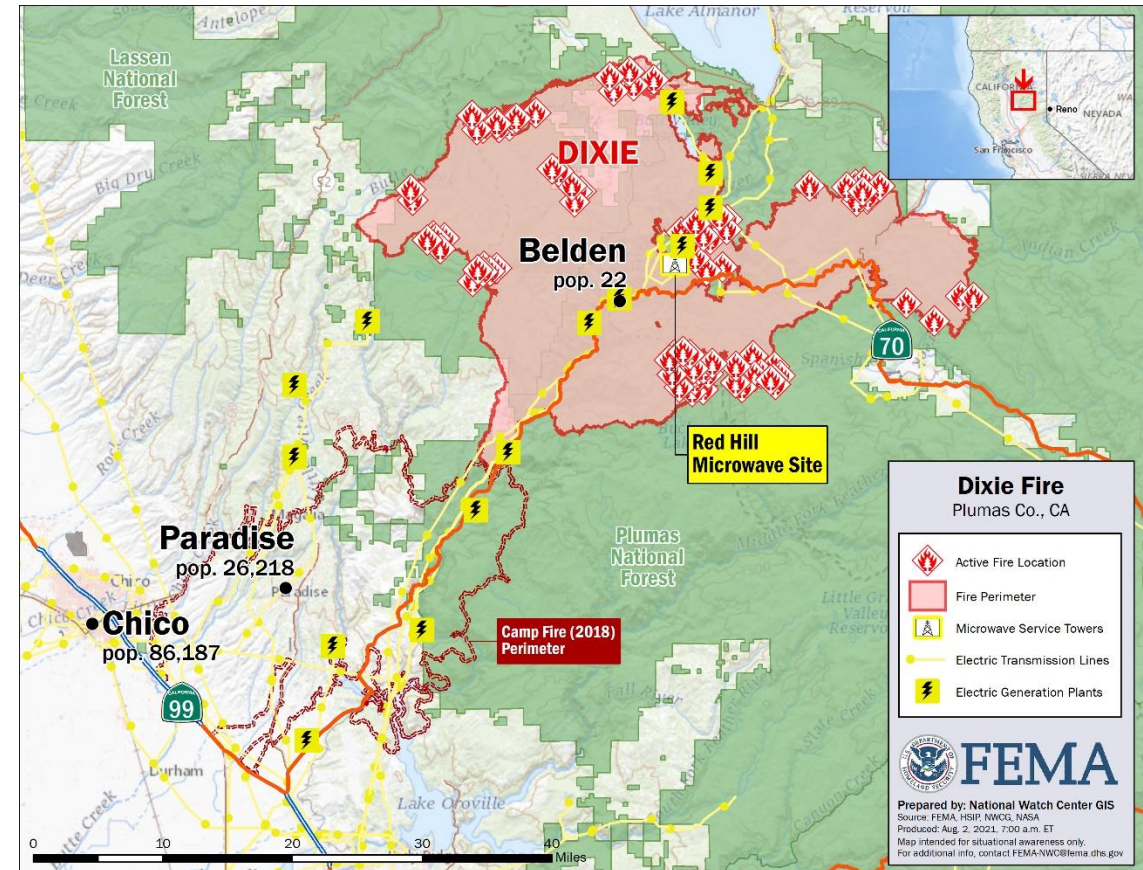
Situation:

The fire began on Jul 13 in Plumas County, CA. NIFC reports the cause of the fire was attributed to a downed power line. On Jul 20, an FMAG was approved with 40,000 acres burned and only 15% containment. Currently the fire has grown to 248,570 acres burned with 33% containment

- There was an original evacuation of 1,500 residents that threatened 800 homes with 8 destroyed at the time
- Evacuations have increased to 9,044 residents, threatening 3,043 homes and destroying 45
- This fire has threatened major infrastructure which includes the Red Hill Microwave Communications Site, PG&E megawatt transmission lines, and hydroelectric power facilities
- Highway 70 access has been interrupted throughout the duration of the fire

Response:

- NIFC reports over 5k personnel involved in the fire suppression efforts
- FMAG approved on Jul 20, 2021
- FEMA NWC and Region IX continue to monitor and report



FEMA

Joint Preliminary Damage Assessments

Region	State / Location	Event	IA	Number of Counties		Start – End
			PA	Requested	Complete	
I	NH	Storms and Flooding Jul 17-19	IA	0	0	N/A
			PA	2	0	8/2 – TBD
V	MI	Severe Weather and Flooding Jun 25-26	IA	2	2	7/8 – 7/12
			PA	3	0	7/8 – TBD
VII	NE	Severe Storms Jul 9-10	IA	0	0	N/A
			PA	13	12 (+5)	7/27 – TBD



FEMA

Declaration Request – Montana

Declaration: Major Disaster Declaration

Date Requested: Jul 29

Incident: Straight-line Winds

Incident Period: Jun 10, 2021

Requested:

- **PA:** 5 counties
- **Hazard Mitigation:** Statewide



 **PA**



FEMA

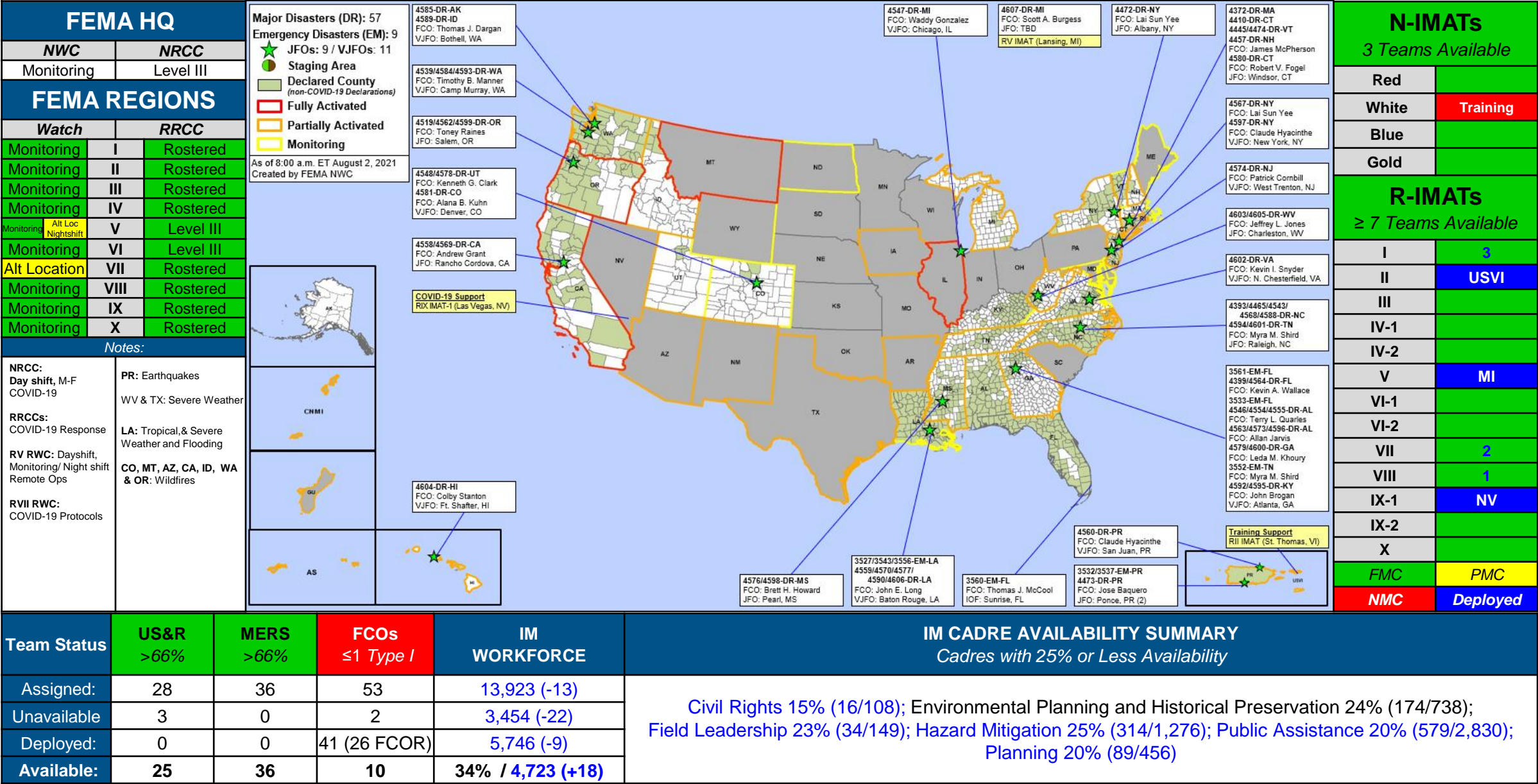
Declaration Requests in Process – 1

State / Tribe / Territory – Incident Description	Type	IA	PA	HM	Requested
MT – Straight-line Winds	DR		X	X	7/29



FEMA

FEMA Common Operating Picture





FEMA

Helping people before, during, and after disasters.



Scan to subscribe to this briefing.