

FEMA National Watch Center

# Daily Operations Briefing

Wednesday, August 11, 2021

8:30 a.m. ET



**FEMA**

# National Current Ops / Monitoring

---

## New Significant Incidents / Ongoing Ops

- Wildfires – Western U.S.
- Tropical Storm Fred

## Hazard Monitoring

- Severe thunderstorms possible – Middle/Upper Mississippi Valley to Great Lakes
- Tropical Activity:
  - Atlantic:
    - Tropical Storm Fred, Disturbance 1
  - Eastern Pacific:
    - Tropical Storm Kevin, Tropical Storm Linda
  - Western Pacific:
    - Tropic Depression 16W

## Disaster Declaration Activity

- FMAG approved - MT
- Major Disaster request – ND
- Amendments Issued – FL & Ponca Tribe of NE

## Event Monitoring

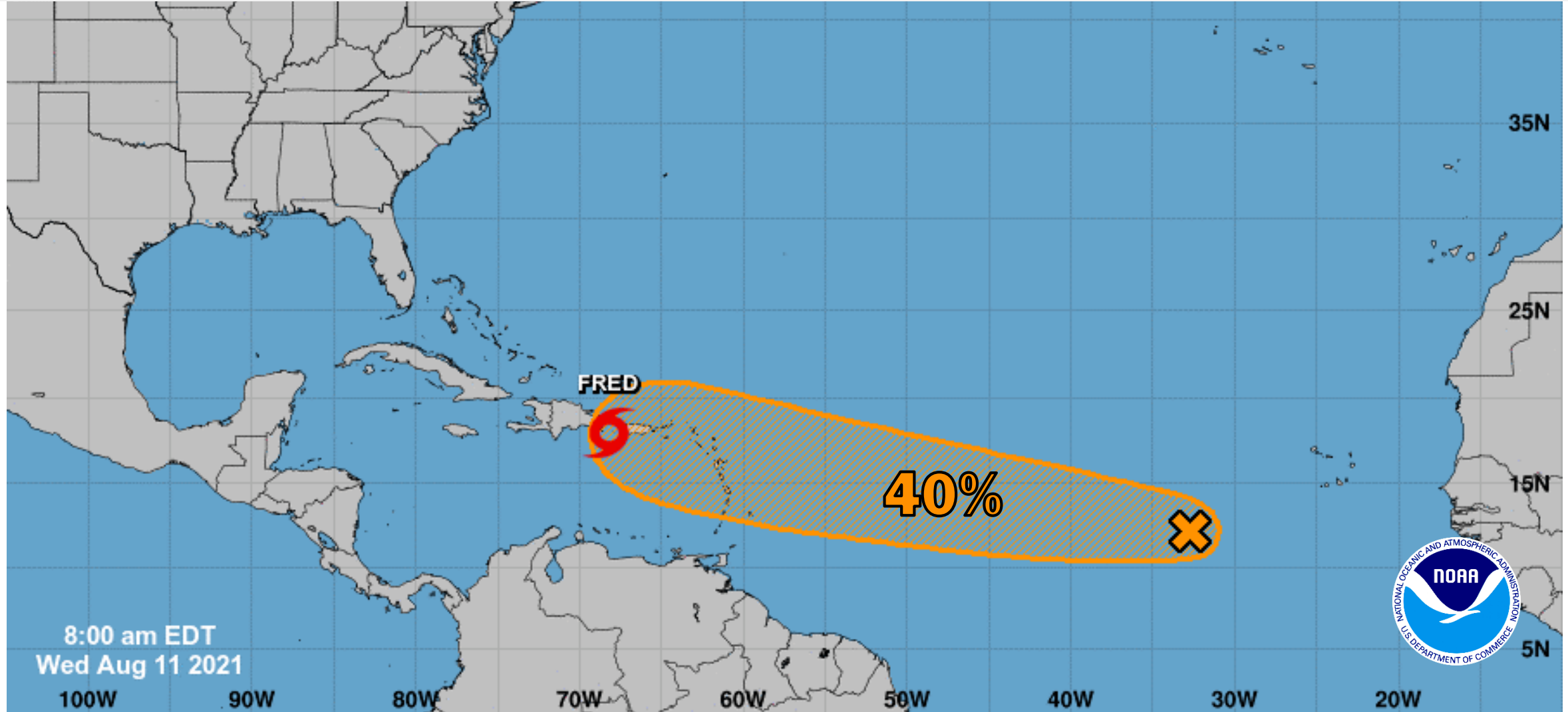
- None



**FEMA**

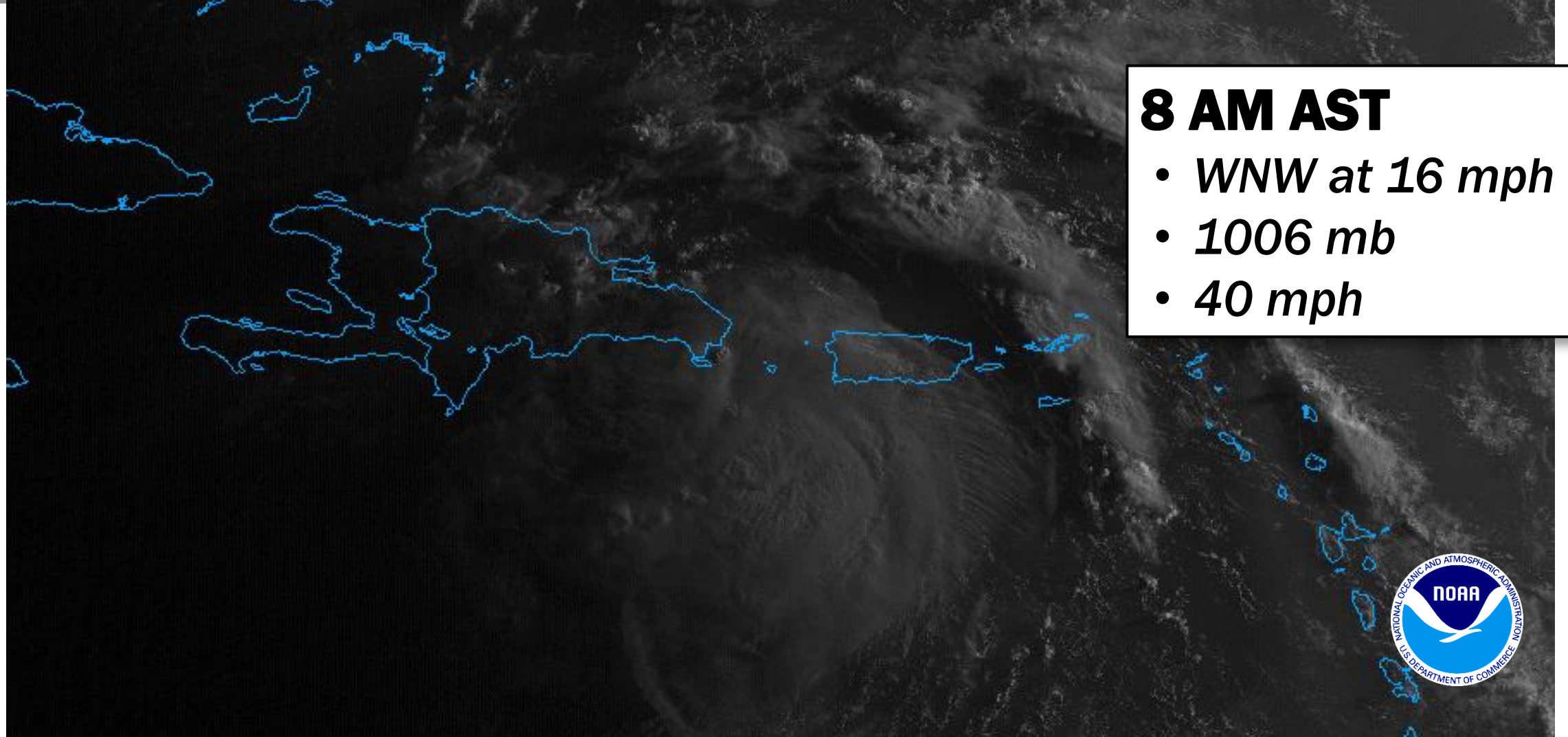
# Atlantic Overview

## TROPICAL OUTLOOK



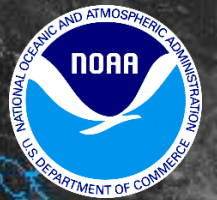
# Tropical Storm Fred

## SATELLITE LOOP



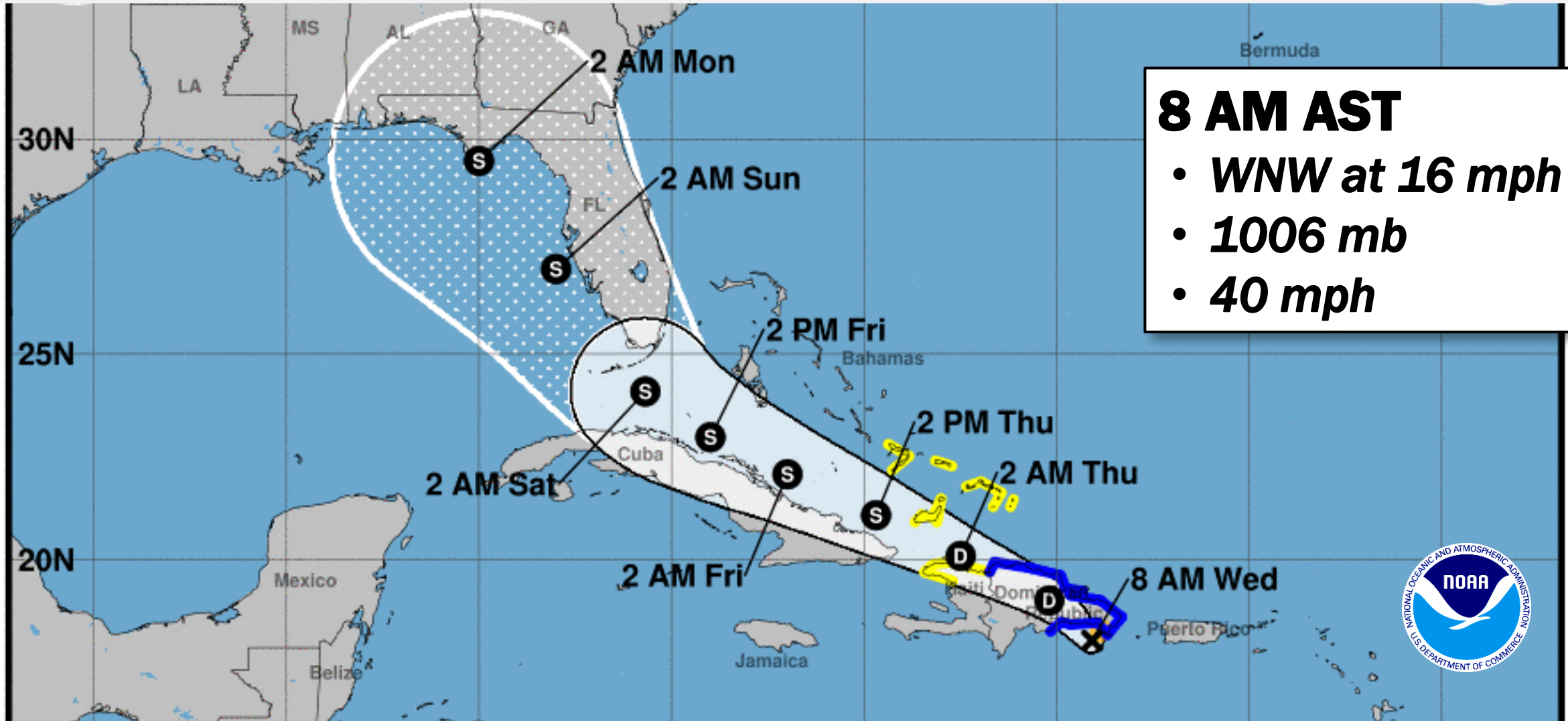
**8 AM AST**

- *WNW at 16 mph*
- *1006 mb*
- *40 mph*



# Tropical Storm Fred

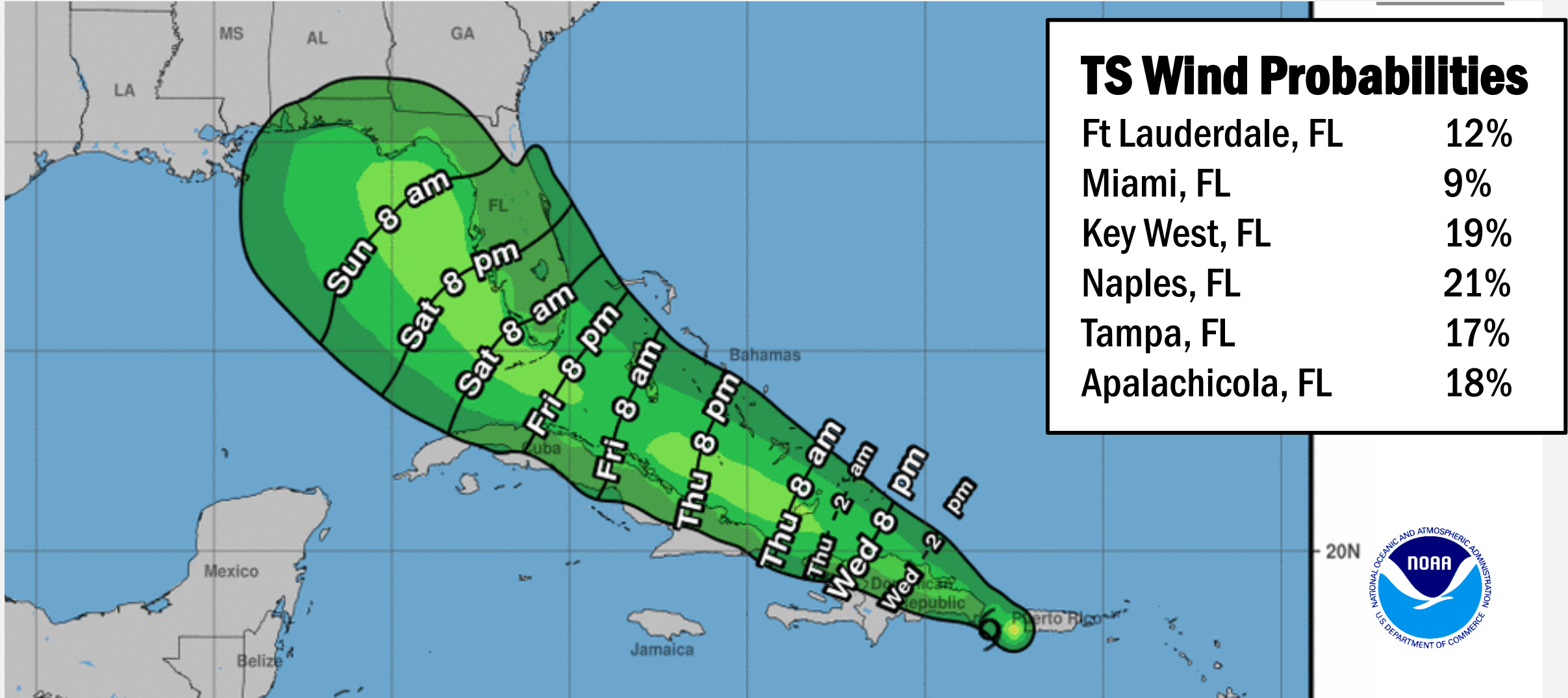
## FORECAST TRACK





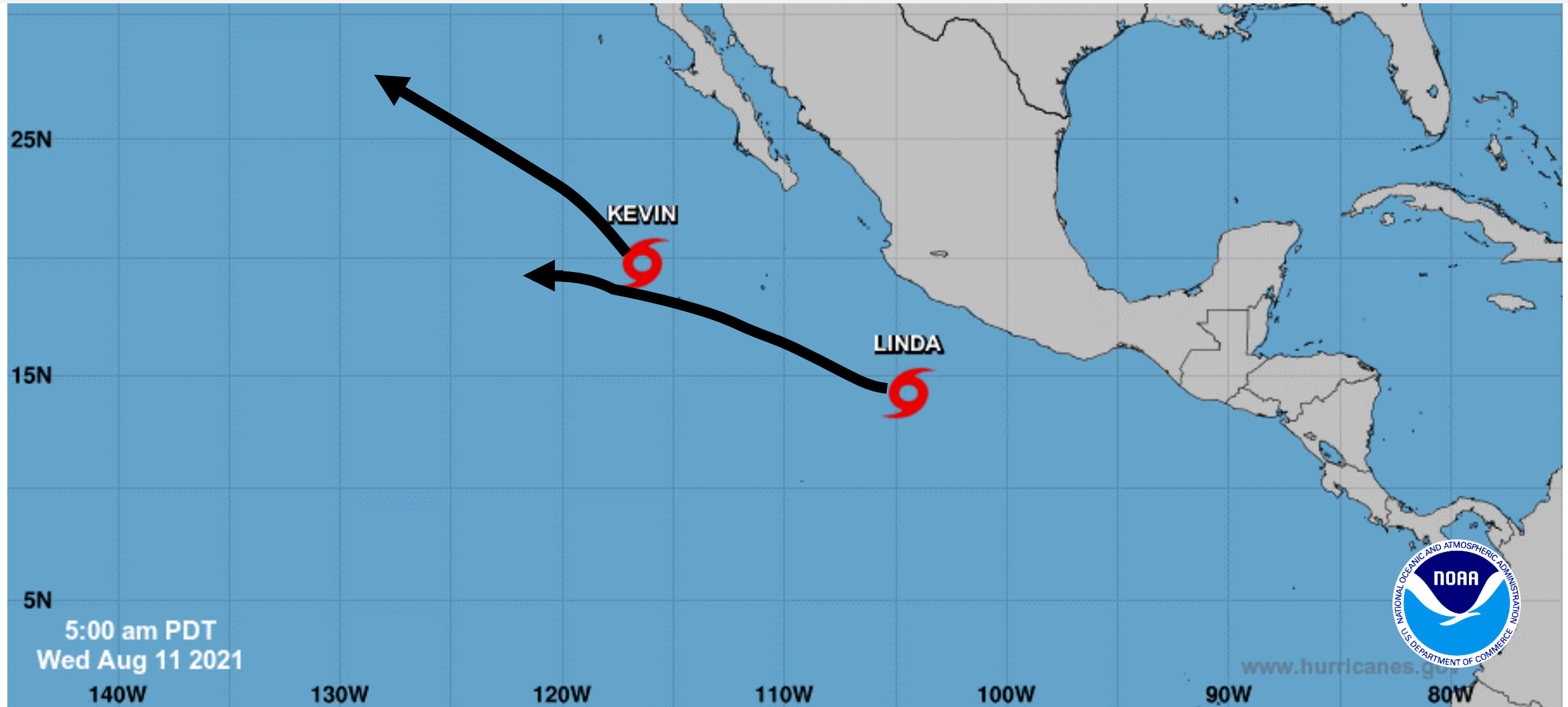
# Tropical Storm Fred

## MOST LIKELY ARRIVAL OF TS WINDS



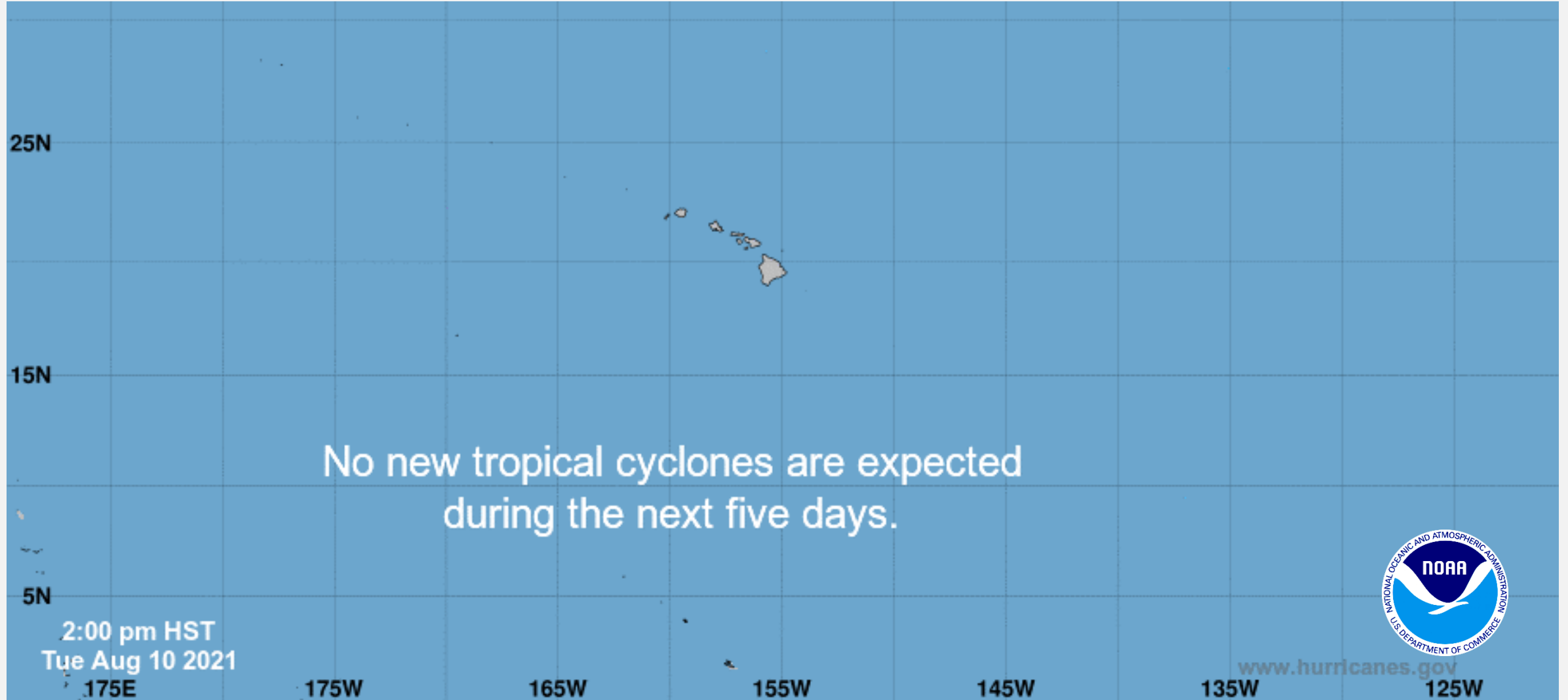
# East Pacific Overview

## TROPICAL OUTLOOK



# Central Pacific Overview

## TROPICAL OUTLOOK

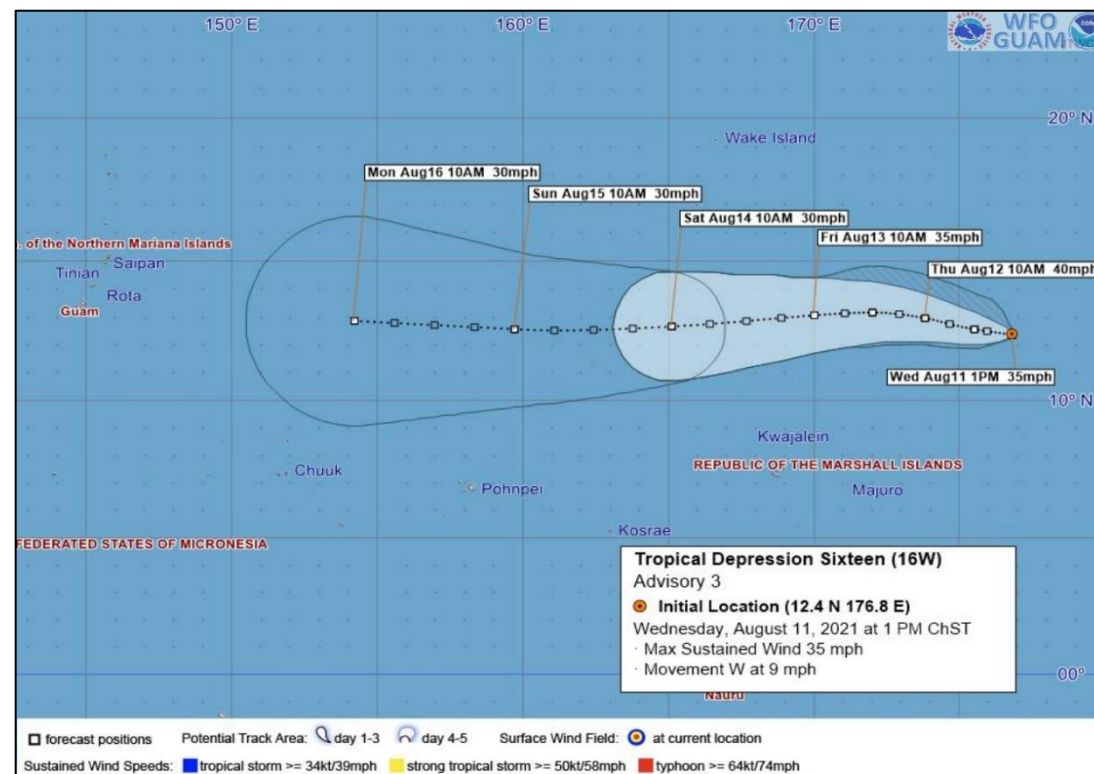




# Tropical Depression 16W– Western Pacific

Situation: (Advisory #4 as of 5:00 a.m. ET)

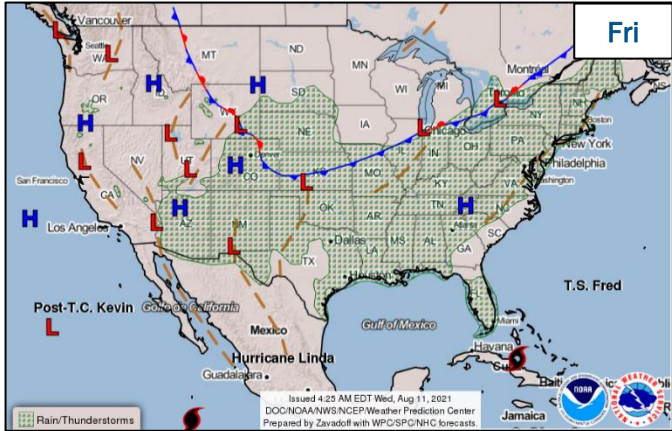
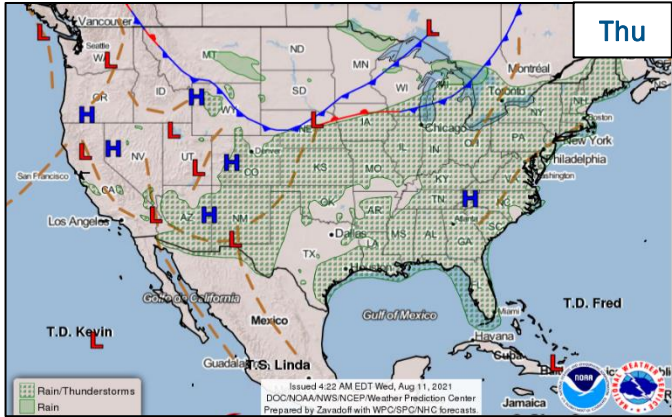
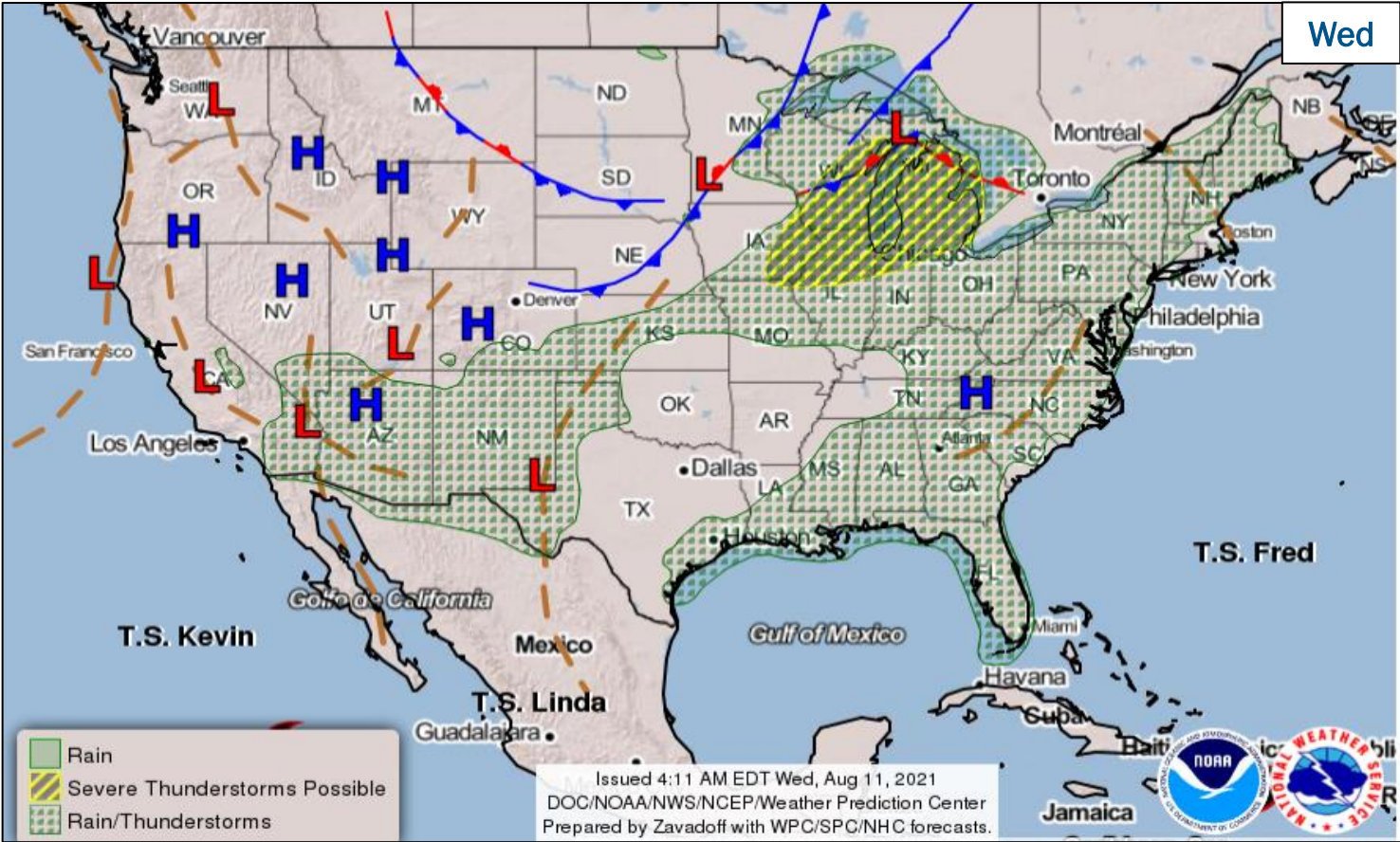
- 2,110 miles E of Guam
- Moving W at 7 mph
- Maximum sustained winds 35 mph
- Expected to intensify slightly; could become a tropical storm tonight or Thursday



FEMA

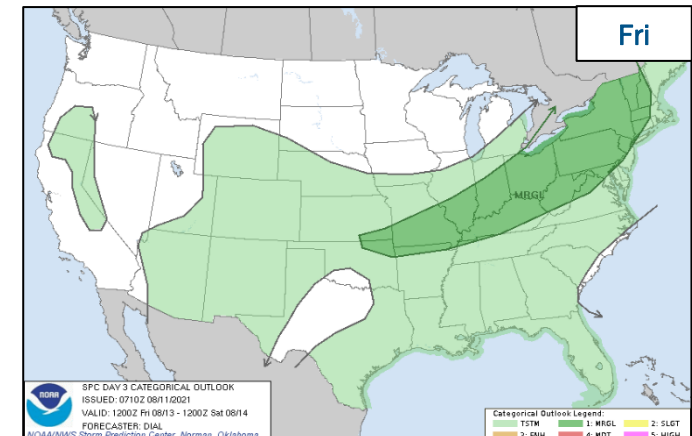
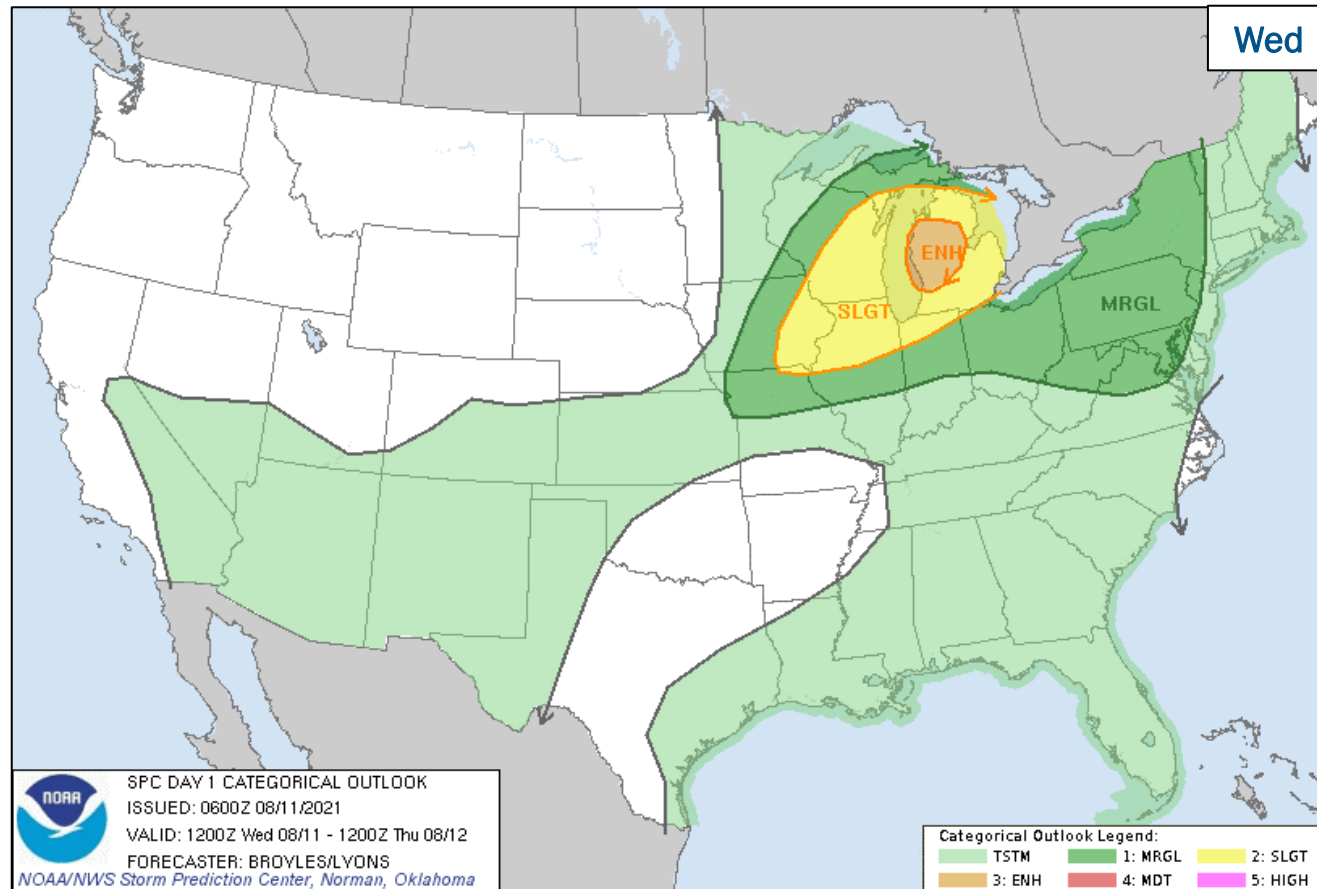
National Watch Center

# National Weather Forecast



FEMA

# Severe Weather Outlook

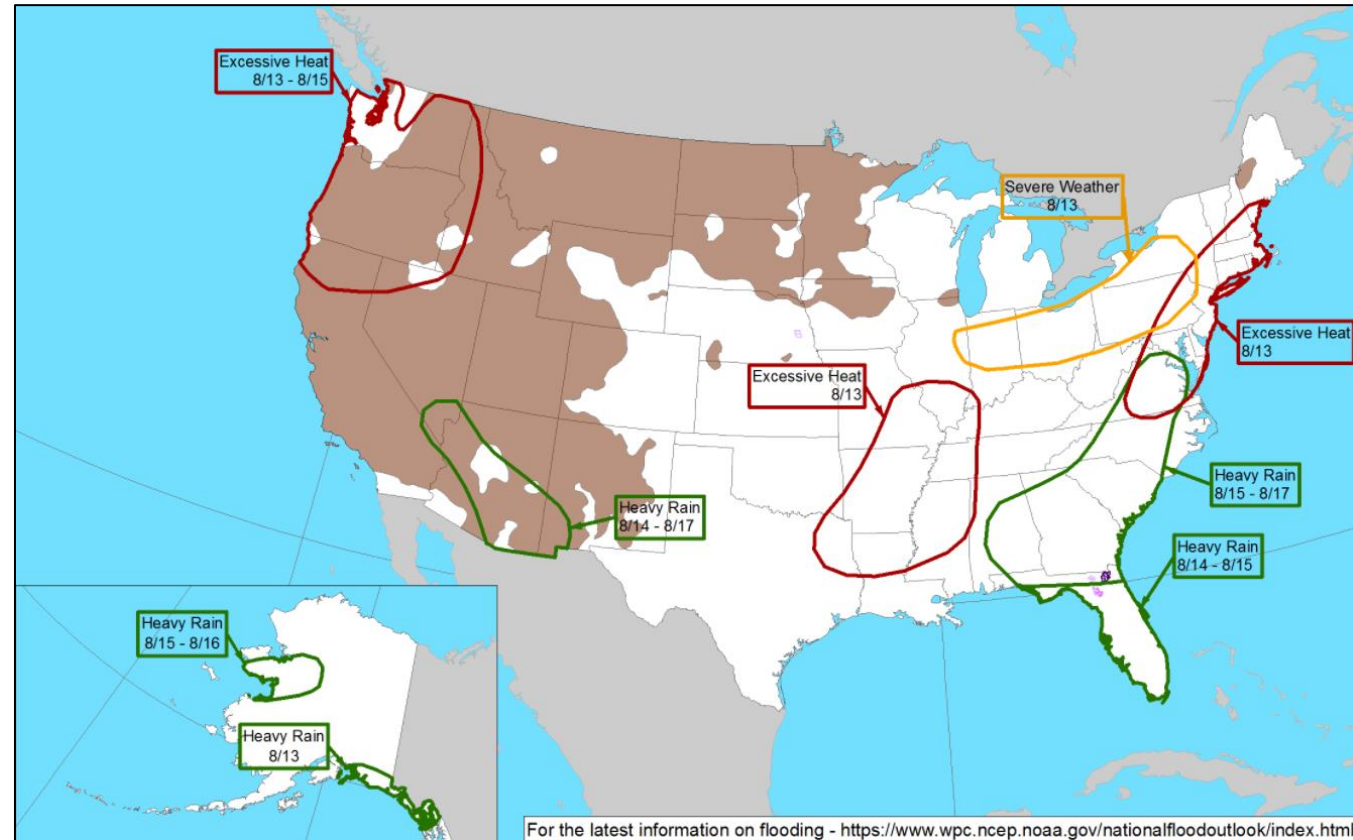


FEMA

National Watch Center



# Hazards Outlook – Aug 13-17



FEMA

National Watch Center

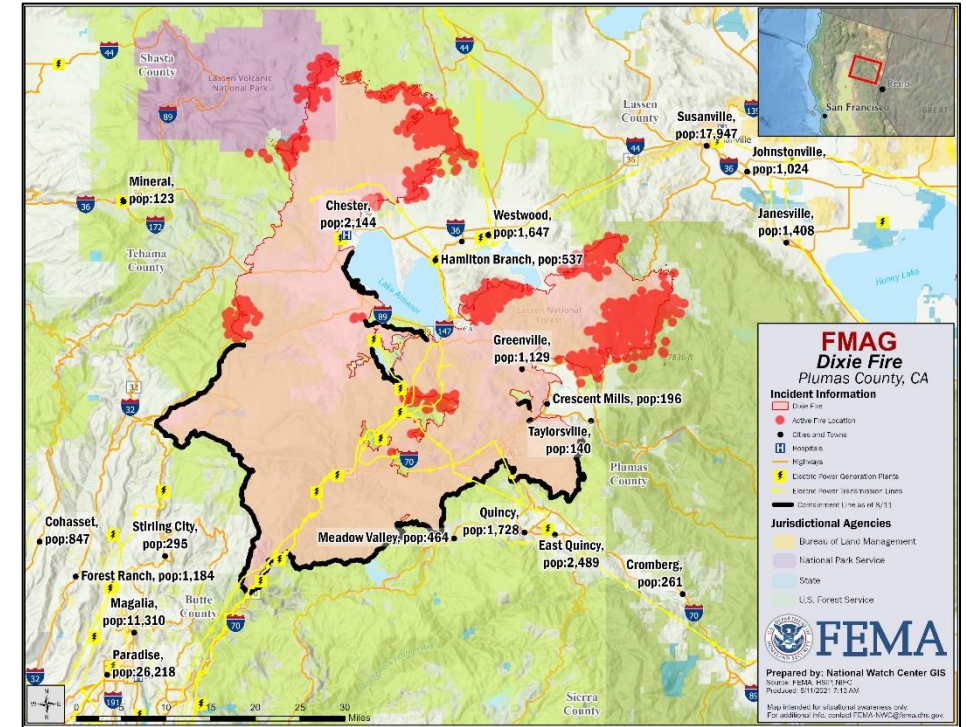
# National Fire Activity *(as of Aug 11)*

National Preparedness Level		PL 5
Initial Attack Activity (24-hour period)	Light (163 fires)	
New large fires:	5	
Large fires contained:	1	
Uncontained large fires:	98	
Cumulative Acres Burned	3,821,173	
Total Responders (2021 Fire Season)	25,569 (-290)	
Type 1 IMTs deployed	14 of 16	
Type 2 IMTs deployed	20 of 33	
Preparedness Levels Legend		
PL 1	Minimal fire activity; many resources available	
PL 2	Large wildland fires burning throughout country; resources mobilized from other areas	
PL 3	Wildfire activity ongoing throughout 25% of county; National Interagency Coordination Center (NICC) sets priorities, allocates resources, and mobilizes assets at national level	
PL 4	High levels of fire activity and areas are competing for firefighting resources; 60% of the nations wildland firefighting resources committed	
PL 5	Extremely high levels of fire activity; 80% of nations firefighting resources committed	



# Wildfire Summary

Fire Name (County, ST)	FMAG #	Acres Burned	Percent Contained	Evacuations	Structures (Homes / Other)			Fatalities / Injuries
					Threatened	Damaged	Destroyed	
Dixie (Plumas, CA)	5400-FM-CA	490,205 (+8,158)	27% (+5)	M: 29,976 (-1,034)	H: 15,915	H: 43 (+7)	H: 563 (+79)	0/3
				V: 0	O: 120	O: 26 (+1)	O: 464 (+75)	



(Evacuations: M = Mandatory / V = Voluntary; Structures: H = Homes and Mixed Commercial/Residential / O = Non-residential Commercial/Other Minor Structures)



# FEMA

National Watch Center

# Richard Spring Fire – Montana

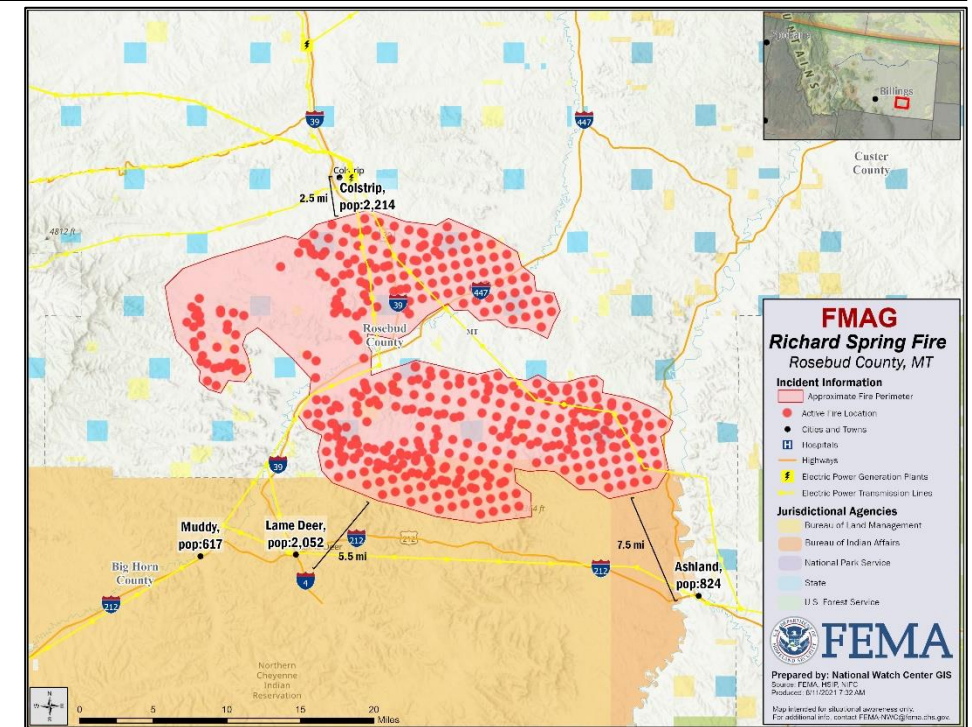
Fire Name (County, ST)	FMAG #	Acres Burned	Percent Contained	Evacuations	Structures (Homes / Other)			Fatalities / Injuries
					Threatened	Damaged	Destroyed	
Richard Spring Fire (Rosebud County, MT)	5406-FM-MT	150,000	0%	M: 0	H: 1,672	H: 0	H: 0	0 / 0
				V: 600	O: 2,090	O: 0	O: 4	

## Situation:

- The fire began August 8 and is burning on federal, state, tribal, and private land 8 miles southwest of Colstrip (population 2,266)
- Threatening 1,881 primary homes and 209 secondary homes in and around Colstrip and neighboring communities (combined affected population 5,265)
- Also threatening 2,090 critical infrastructures, including emergency facilities: fire departments, forestry and wildland fire management buildings, medical facilities including ambulance services, utilities for power, cellular, and water treatment

## Response:

- MT EOC at Full Activation (Wildfires and COVID-19)
- Denver MOC/Region VIII RWC and the NWC are monitoring
- FMAG approved August 10



FEMA

# Joint Preliminary Damage Assessments

Region	State / Location	Event	IA	Number of Counties		Start – End
			PA	Requested	Complete	
I	NH	Severe Storms and Flooding Jul 17-19	IA	0	0	N/A
			PA	2	0	8/4 – TBD
	VT	Severe Storms and Flooding Jul 29	IA	0	0	N/A
			PA	2	0	8/4 – TBD
	MA	Severe Storms and Flooding Jul 16-21	IA	0	0	N/A
			PA	5	0	8/10 – TBD
V	MI	Severe Weather and Flooding Jun 25-26	IA	2	2	7/8 – 7/12
			PA	3	0	7/8 – TBD
VII	NE	Severe Storms Jul 9-10	IA	0	0	N/A
			PA	13	11	7/27 – TBD



**FEMA**

# Declaration Request – North Dakota

**Declaration:** Major Disaster Declaration

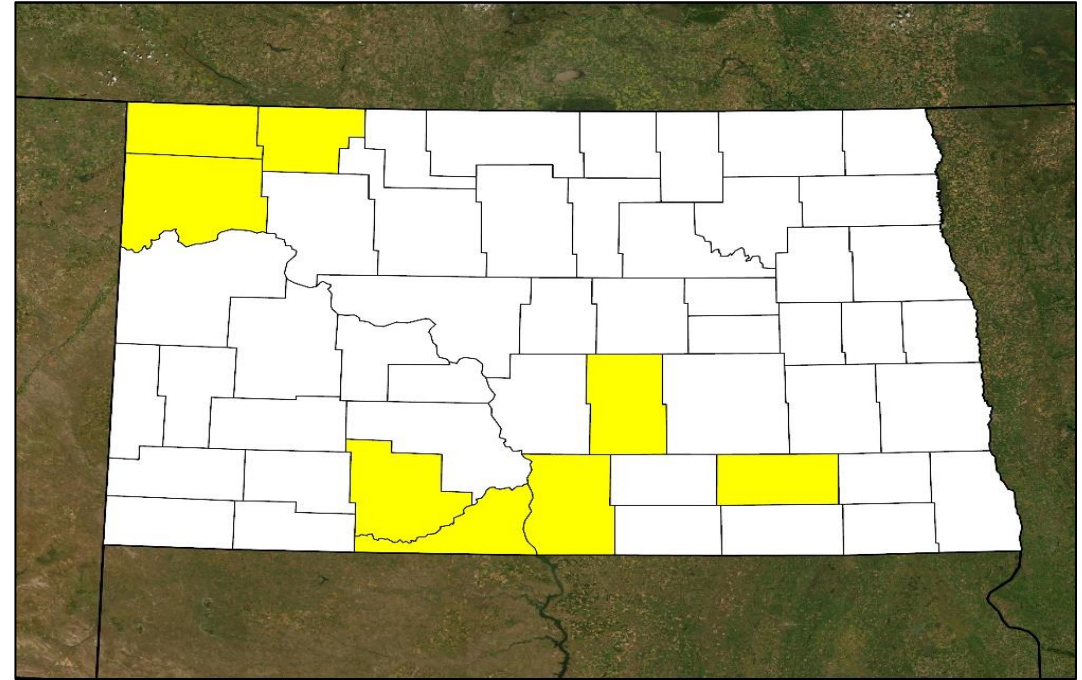
**Date Requested:** Aug 9

**Incident:** Severe storms, straight-line winds, and flooding

**Incident Period:** June 7-11, 2021

**Requested:**

- **PA:** 8 counties
- **Hazard Mitigation:** Statewide



■ PA



**FEMA**

National Watch Center

# Declaration Requests in Process – 3

State / Tribe / Territory – Incident Description	Type	IA	PA	HM	Requested
Fort Peck Assiniboiné & Sioux Tribes – Severe Storm, Straight-line Winds, and Flooding	DR	X		X	8/03
MT – Straight-line Winds	DR		X	X	7/29
ND – Severe storms, Straight-line Winds, and Flooding	DR		X	X	8/9



FEMA



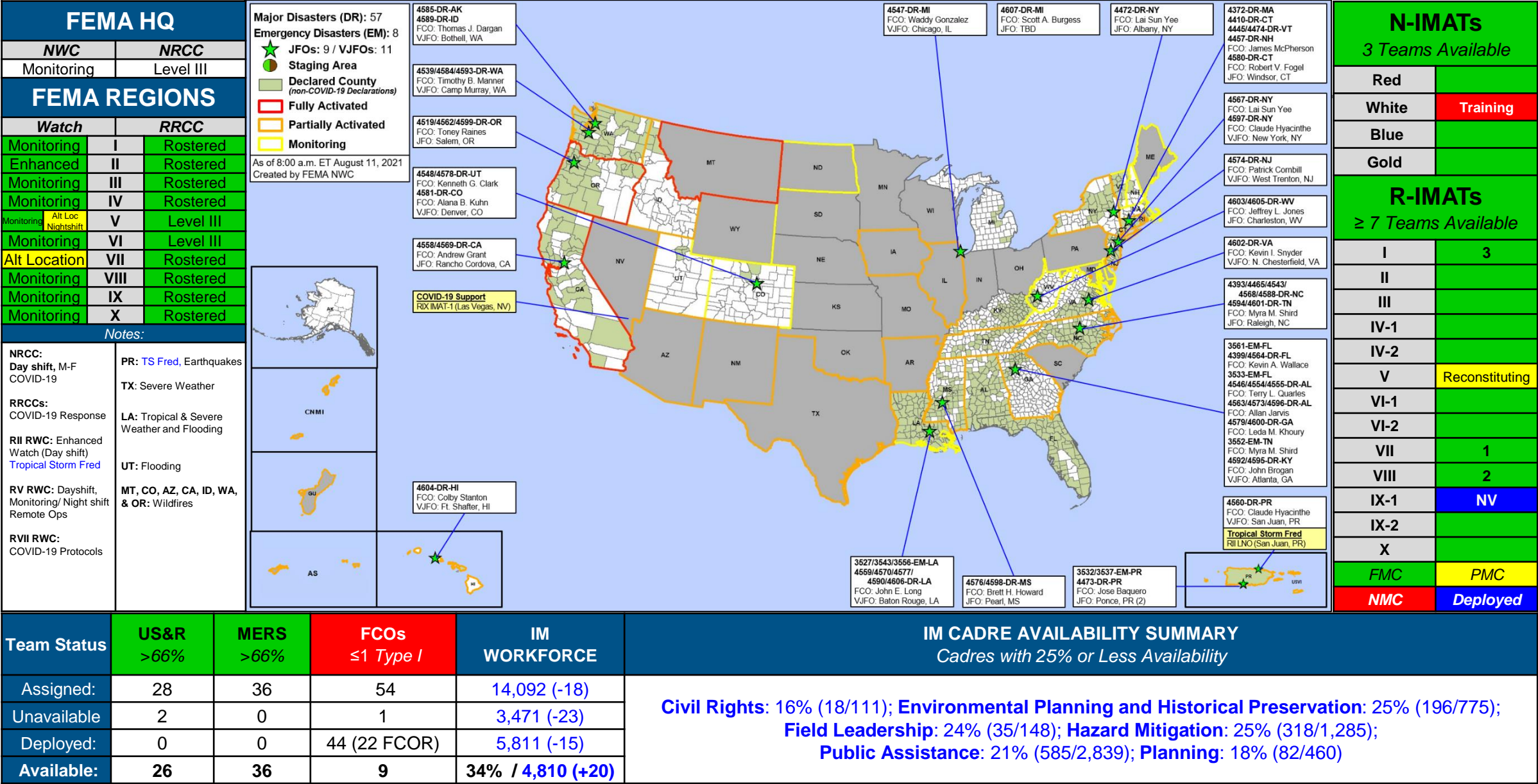
# Declaration Amendments

Declaration	Number	Issued	Action
4446-DR-Ponca Tribe of Nebraska	2	July 21	Amends cost share to authorize Federal funds for all categories of PA at 90% of total eligible costs
3560-EM-FL	2	August 6	Closes the effective period effective July 4, 2021



**FEMA**

# FEMA Common Operating Picture





# FEMA

Helping people before, during, and after disasters.



*Scan to subscribe to this briefing.*