

FEMA National Watch Center

Daily Operations Briefing

Saturday, August 21, 2021

8:30 a.m. ET



FEMA

National Current Ops / Monitoring

New Significant Incidents / Ongoing Ops

- Wildfire Activity – Western U.S.
- Preparations for Tropical Storm Henri

Hazard Monitoring

- Heavy rain and flash flooding possible – Lower Mississippi Valley and Mid-Atlantic
- Tropical Activity
 - Atlantic:
 - Hurricane Grace
 - Tropical Storm Henri
 - Disturbance 1: Low (20%)
 - Eastern Pacific:
 - Hurricane Grace
 - Disturbance 2: Medium (60%)

Disaster Declaration Activity

- Amendment No. 1 to FEMA-4606-DR-LA
- Amendment No. 6 to FEMA-4563-DR-AL
- Amendment No. 3 to FEMA-4573-DR-AL
- Amendment No. 2 to FEMA-4596-DR-AL
- Amendment No. 2 to FEMA-4602-DR-VA

Event Monitoring

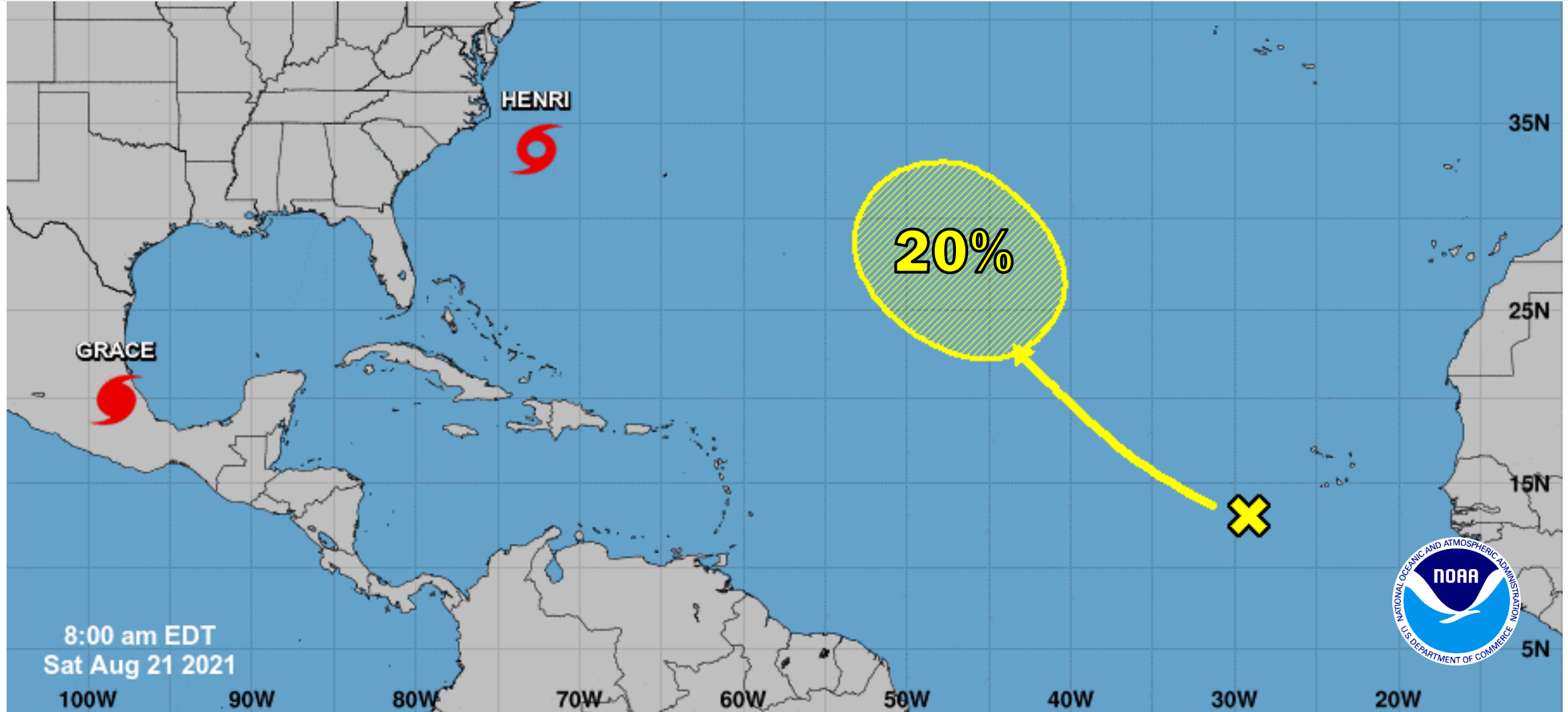
- None



FEMA

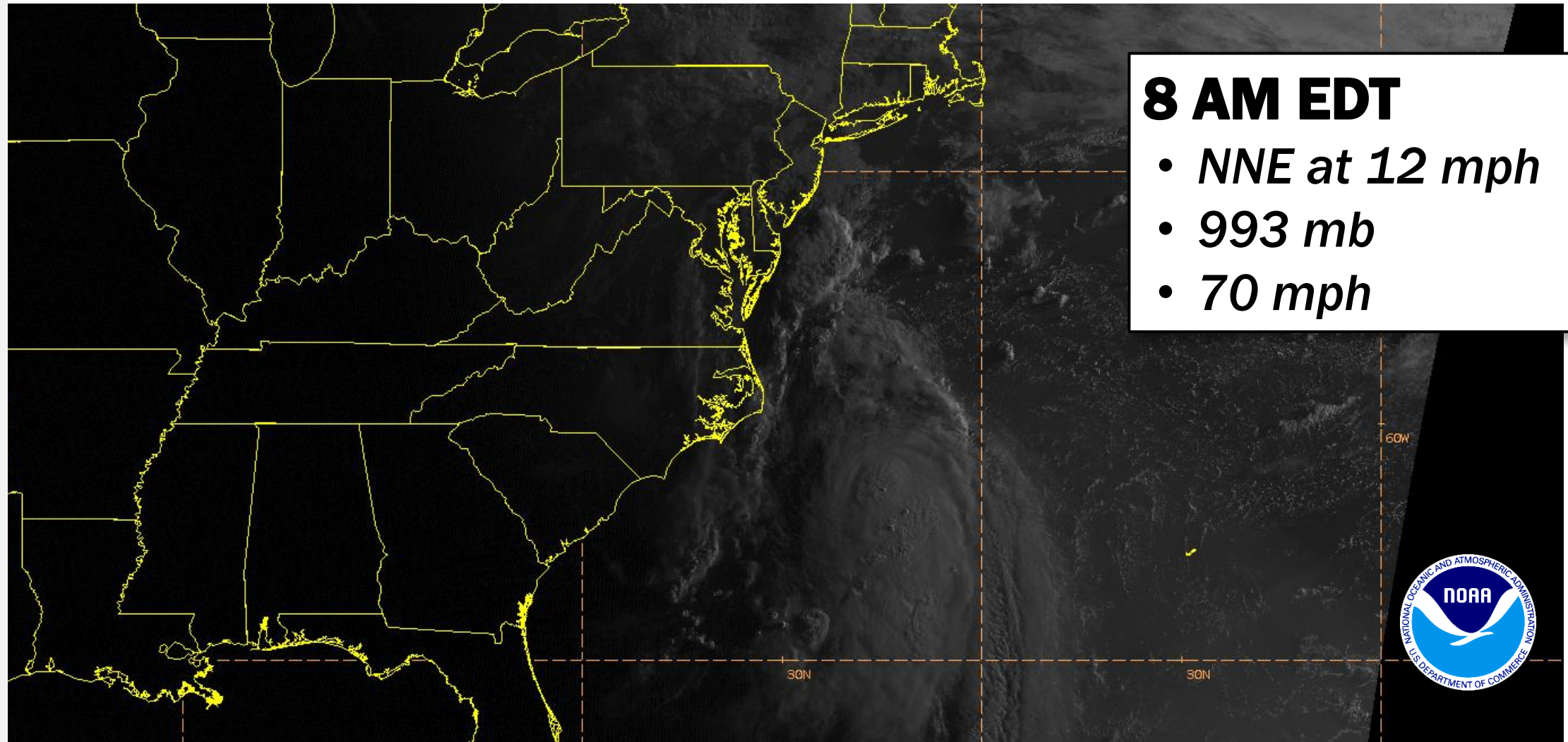
Atlantic Overview

TROPICAL OUTLOOK



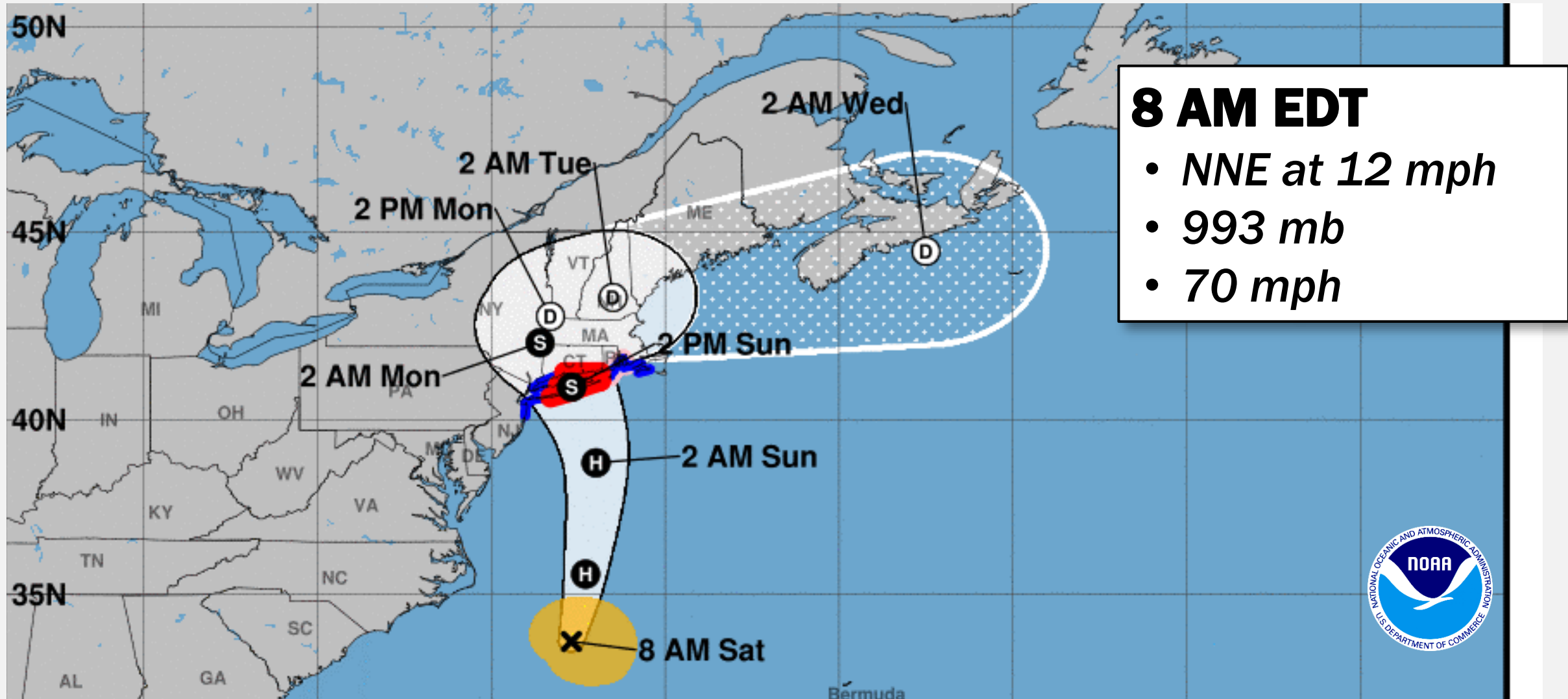
Tropical Storm Henri

SATELLITE LOOP



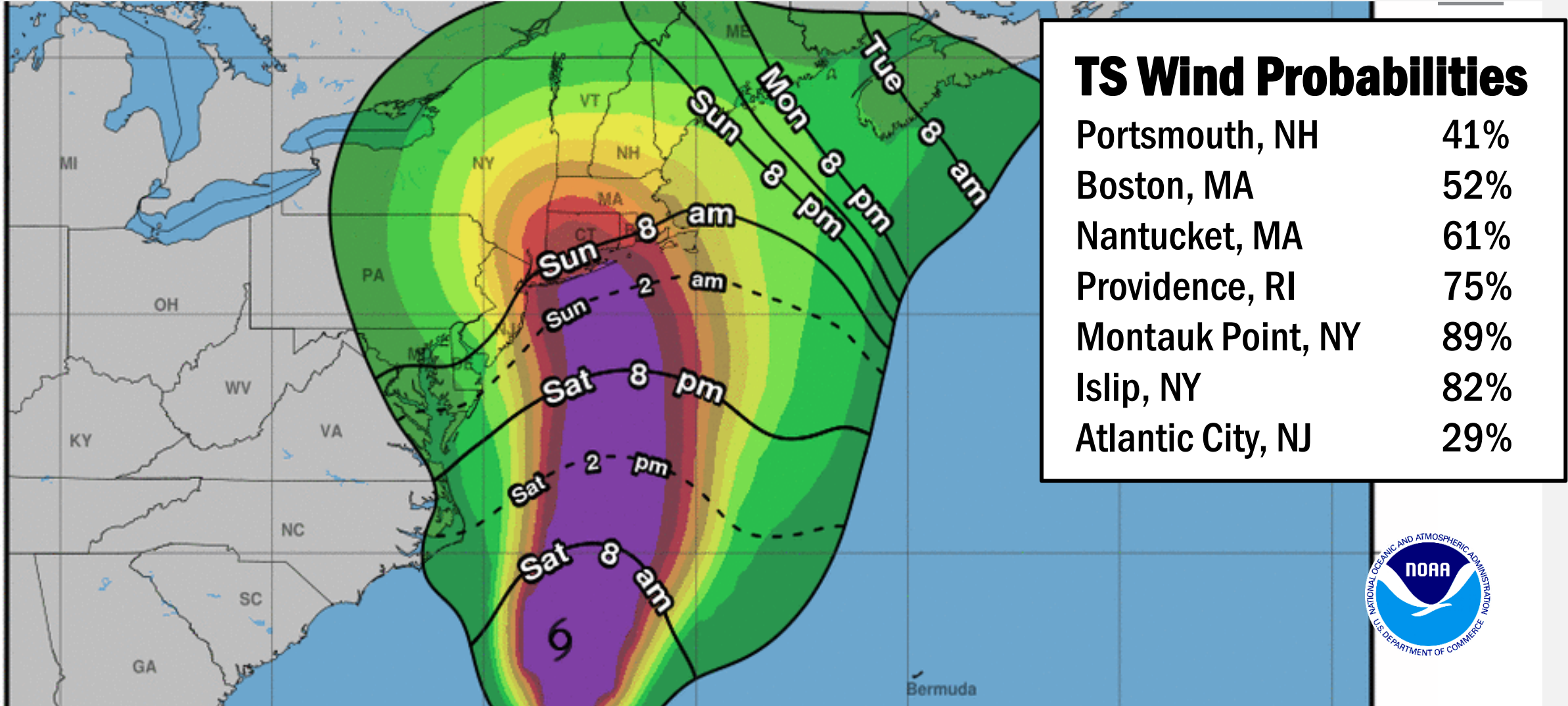
Tropical Storm Henri

FORECAST TRACK



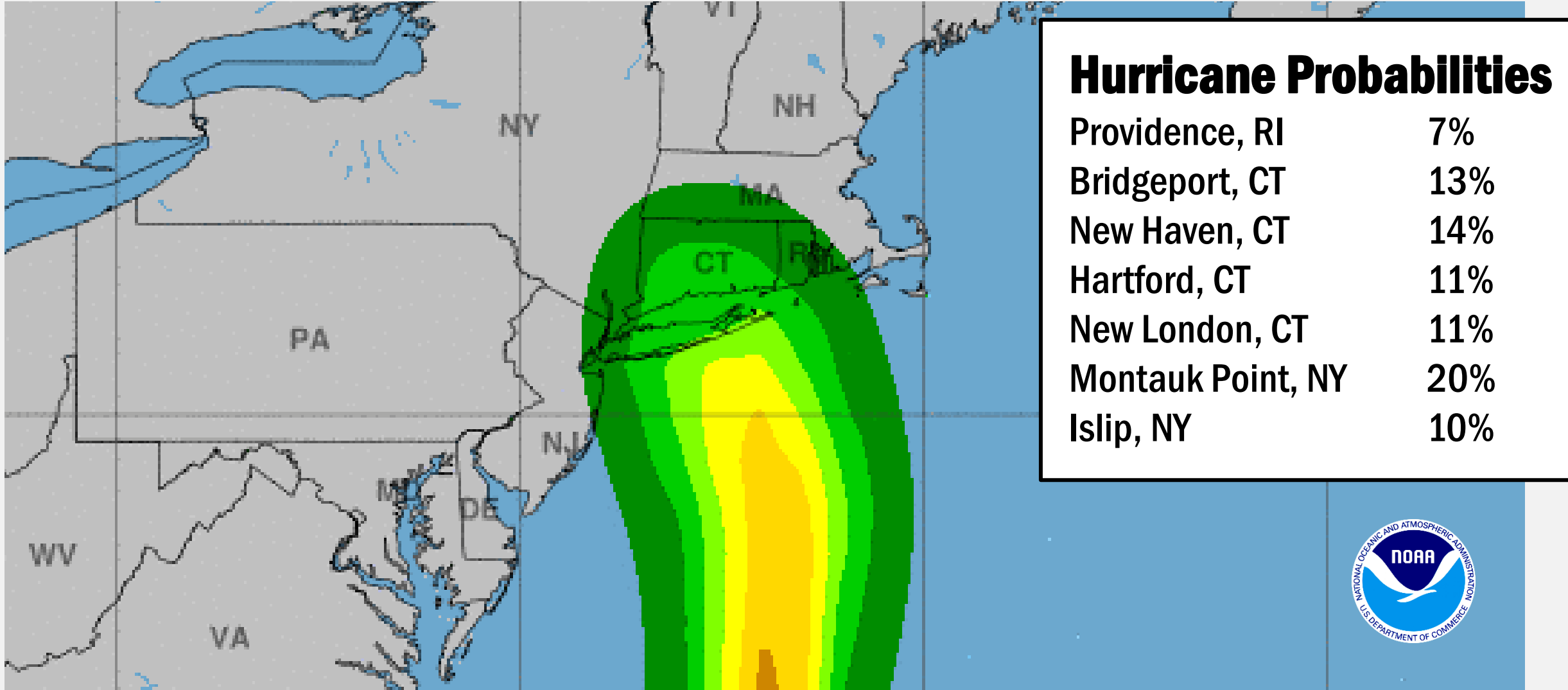
Tropical Storm Henri

MOST LIKELY ARRIVAL OF TS WINDS



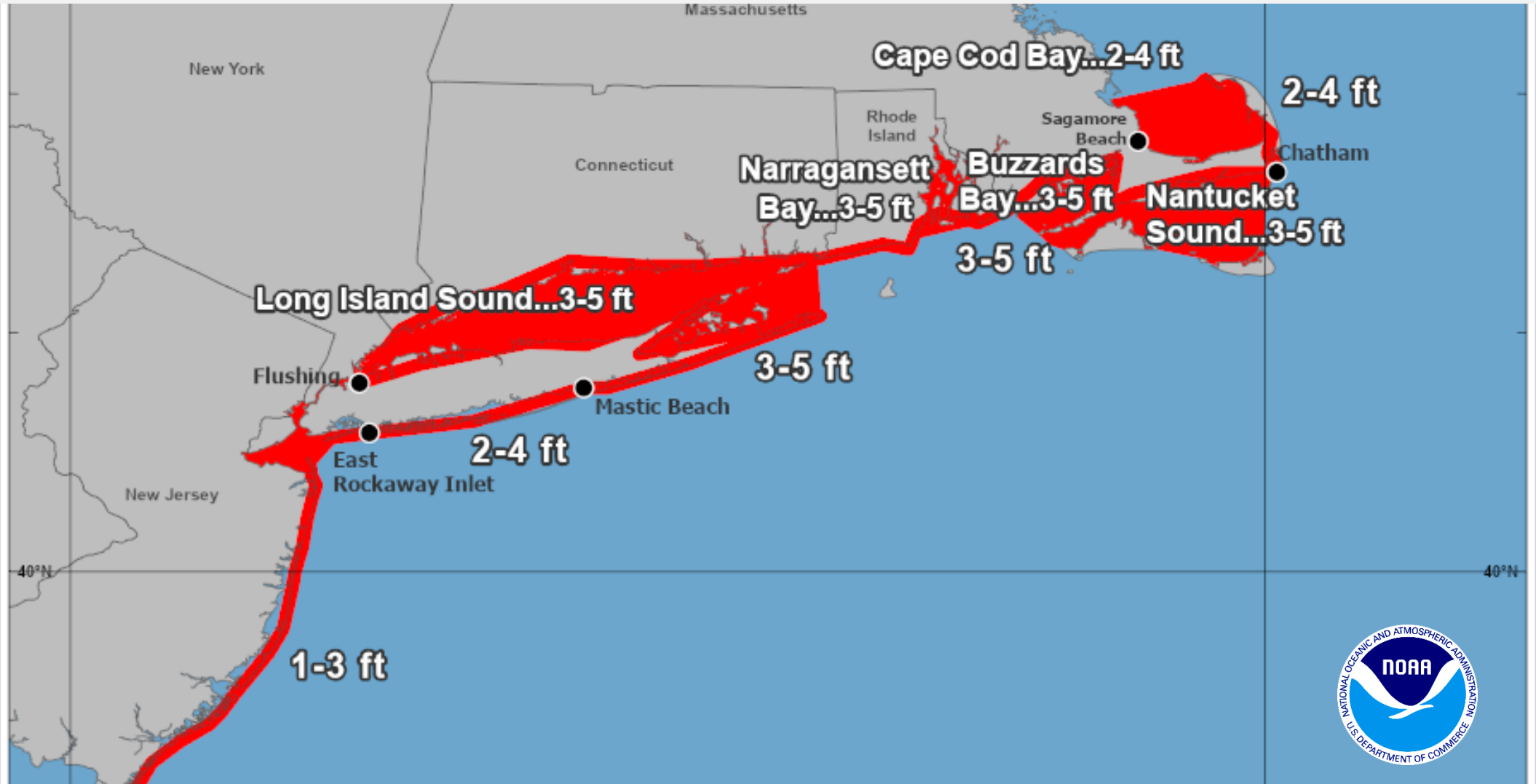
Tropical Storm Henri

HURRICANE WIND PROBABILITIES



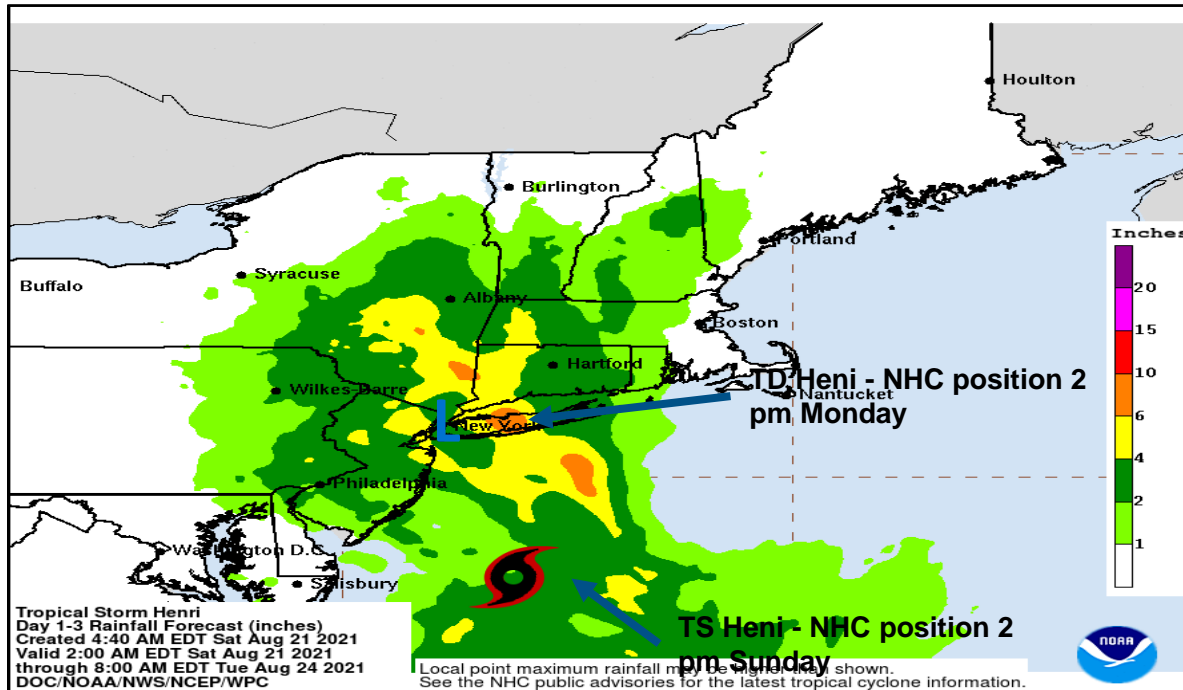
Tropical Storm Henri

PEAK STORM SURGE FORECAST



NWS Weather Prediction Center

3-Day Rainfall Forecast through Early Tuesday, Sep. 24

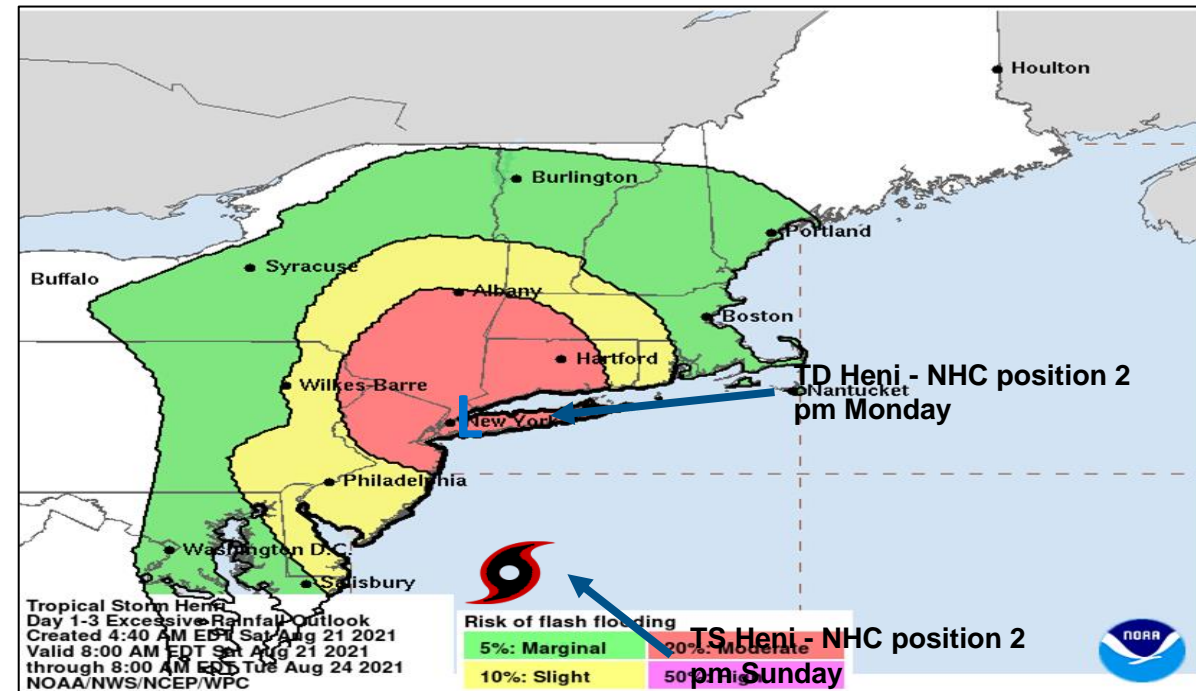


3 to 6 inches over portions of Long Island, New England, southeast New York, and northern New Jersey Sunday, with isolated maximum totals near 10 inches.



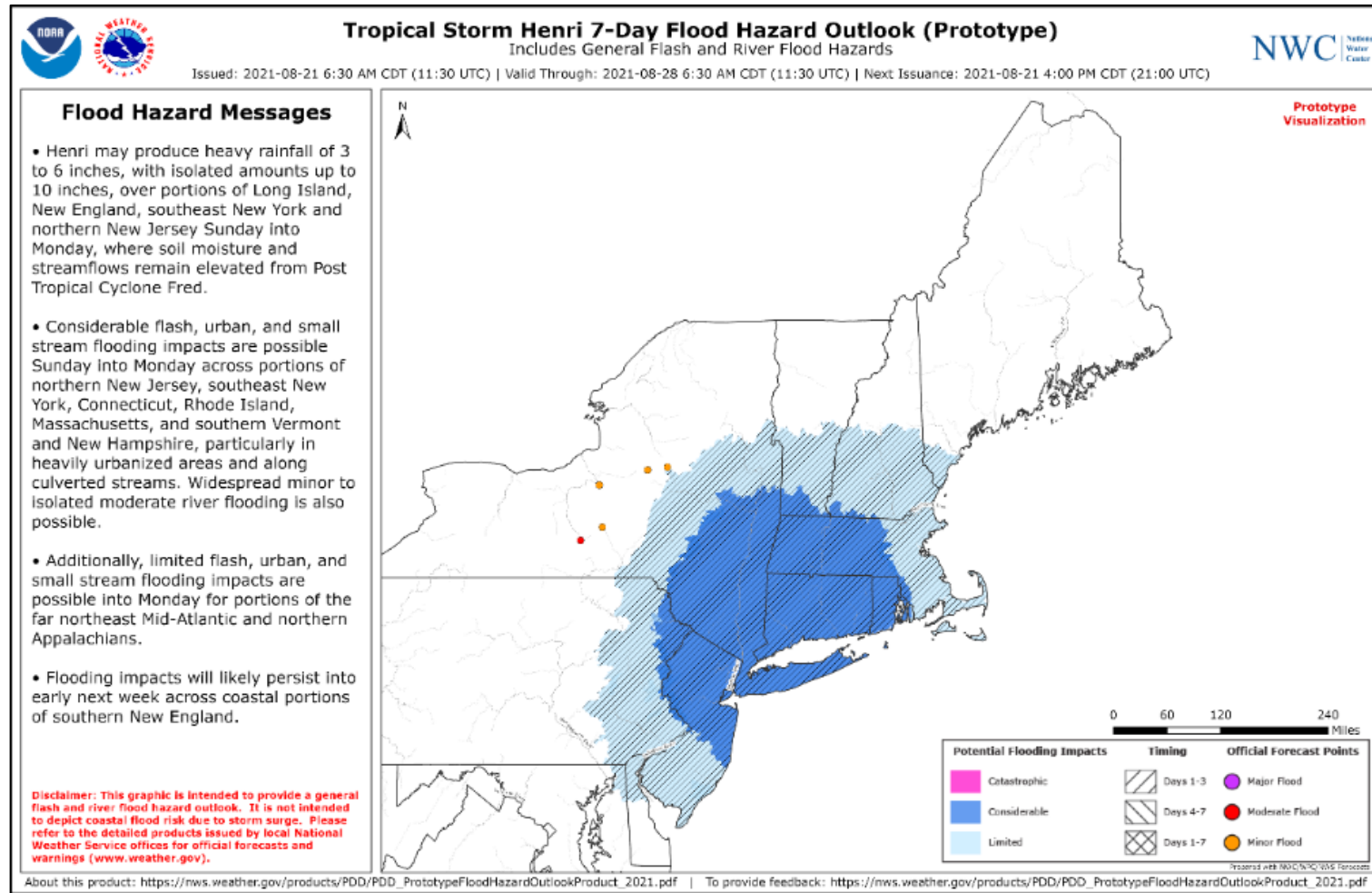
FEMA

Excessive Rainfall / Flash Flooding Risk



Sunday to Monday will see the greatest risk of heavy rainfall rates leading to considerable rapid/flash flooding, especially in urban areas and terrain.

Flood Hazard Outlook (Prototype)



FEMA

National Watch Center

Tropical Storm Henri – Region I Preparations

Situation: As of 5:00 a.m. ET, Henri was located about 555 miles S of Montauk, NY. A northward to north-northeastward motion is expected today with a turn toward the north-northwest expected late today or tonight. On the forecast track, Henri is expected to make landfall in Long Island or southern New England on Sunday. Strengthening is forecast during the next 24 hours and Henri is expected to become a hurricane today and be at or near hurricane strength when it makes landfall in Long Island or southern New England.

Warnings/Watches:

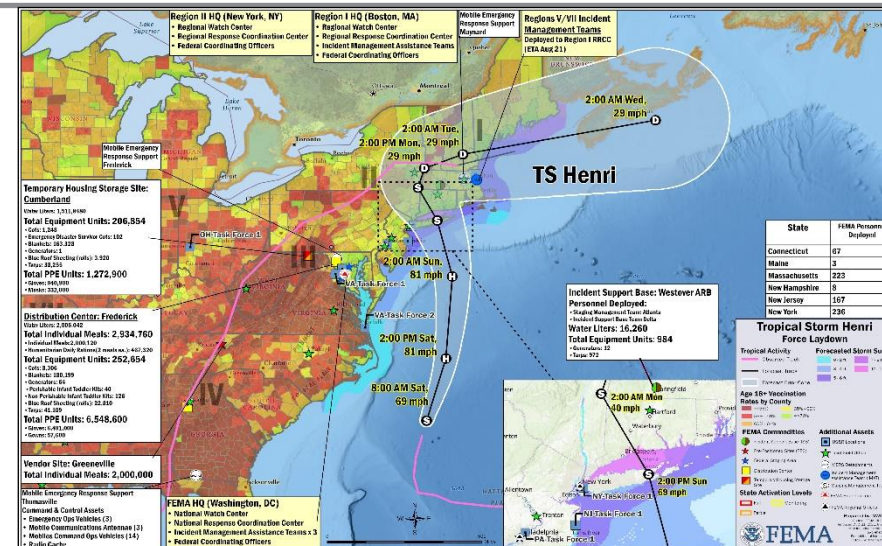
- Storm Surge, Hurricane and Tropical Storm Watches in effect for areas of NY, MA, CT, and RI

State / Local Preparations:

- Coordinating with states for pre-landfall declaration request
- All states and tribes monitoring: **CT Governor declared State of Emergency**
- No requests for Federal assistance received

FEMA / Federal Preparations:

- Region I RRCC activated to Level I (day shift only); RWC is Monitoring; prepared to activate additional resources, if necessary
 - Type 4 power team expected to arrive Saturday to Westover
 - All major electrical providers mobilizing restoration resources from southern states.
 - Hospitals have capacity to handle potential uptick in trauma patients
- RIMATS: R1 (RI), R5 (MA), & R7 (CT)
- FCOs preidentified
- LNO's assigned for all states
- US&R:
 - A White IST element (13 pers) has deployed and is operational at the RI RRCC in Maynard, MA
 - One Mission Ready Package – Water Rescue (MRP-WR) (16 pers) will deploy today to Providence, RI
 - One MRP-WR has been placed on Alert
- Established Air Operations Branch
- Tier-1 SLB will begin on or before 6:00 p.m. Aug 21
 - IMAT FMC/Available
- FEMA HQ:
 - NRCC activated (COVID-19, Henri); NWC is monitoring



- Logistics:
 - SMT Atlanta deployed to Westover ARB
 - Staging generators and other commodities as early as Saturday
 - ISB established in Westover, MA
 - Alpha pack 30(+) Generators
 - [Charlie pack requested](#)
 - Transportation plan in development
 - Type 4 power team deployed to Westover ARB



FEMA

National Watch Center

Tropical Storm Henri – Region II Preparations

Situation: As of 5:00 a.m. ET, Henri was located about 555 miles S of Montauk, NY. A northward to north-northeastward motion is expected today with a turn toward the north-northwest expected late today or tonight. On the forecast track, Henri is expected to make landfall in Long Island or southern New England on Sunday. Strengthening is forecast during the next 24 hours and Henri is expected to become a hurricane today and be at or near hurricane strength when it makes landfall in Long Island or southern New England.

Warnings/Watches:

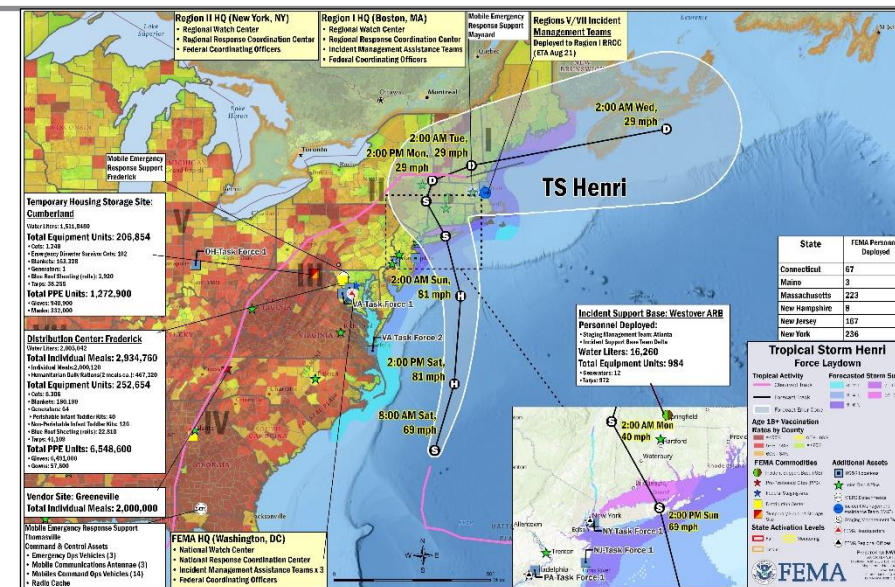
- Storm Surge, Hurricane and Tropical Storm Watches in effect for areas of NY, MA CT, and RI

State / Local Preparations:

- All states and tribes monitoring; no activation changes
- NYC OEM at Level I (COVID-19); NYC OEM SITROOM activated (TC Henri)
- No requests for Federal assistance received

FEMA / Federal Preparations:

- Region II RRCC is Rostered; RWC transitioned to Level III RRCC; ESFs 1, 2, 3, 6, 8, 12, 14, and DCE activated
- ESFs 3, 8, 14, to the IOF in NY
 - State LNO (SLO), IMAT-A/B deployed to IOFs
 - DCE and ESF-1/2/3/6/8/12/14 prepared to deploy
 - HLT Program Manager deployed to NHC in Miami, FL
 - State coordination calls with partners occurs daily
 - FCOs preidentified
- FEMA HQ
 - NRCC activated (COVID-19, Henri); NWC is monitoring



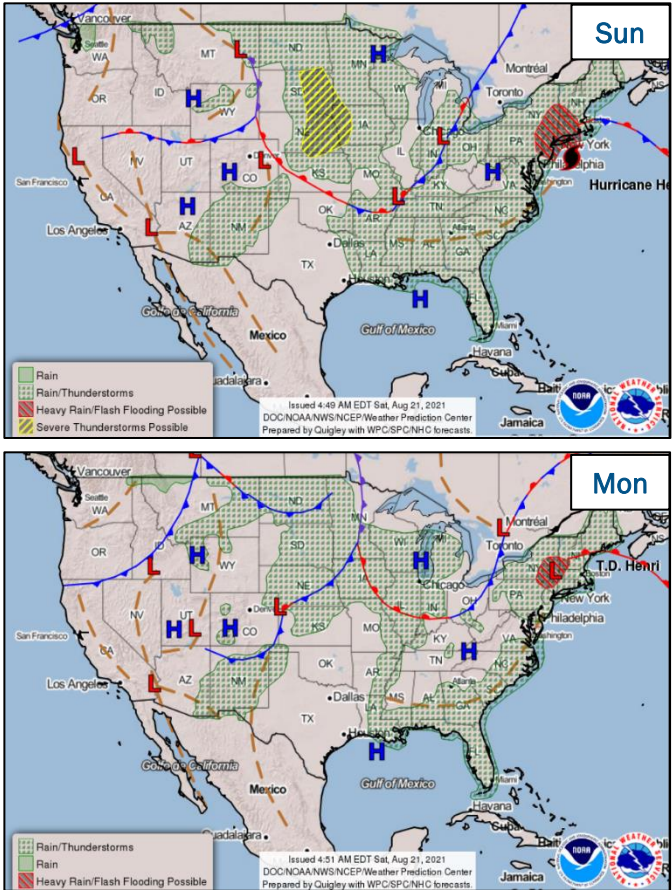
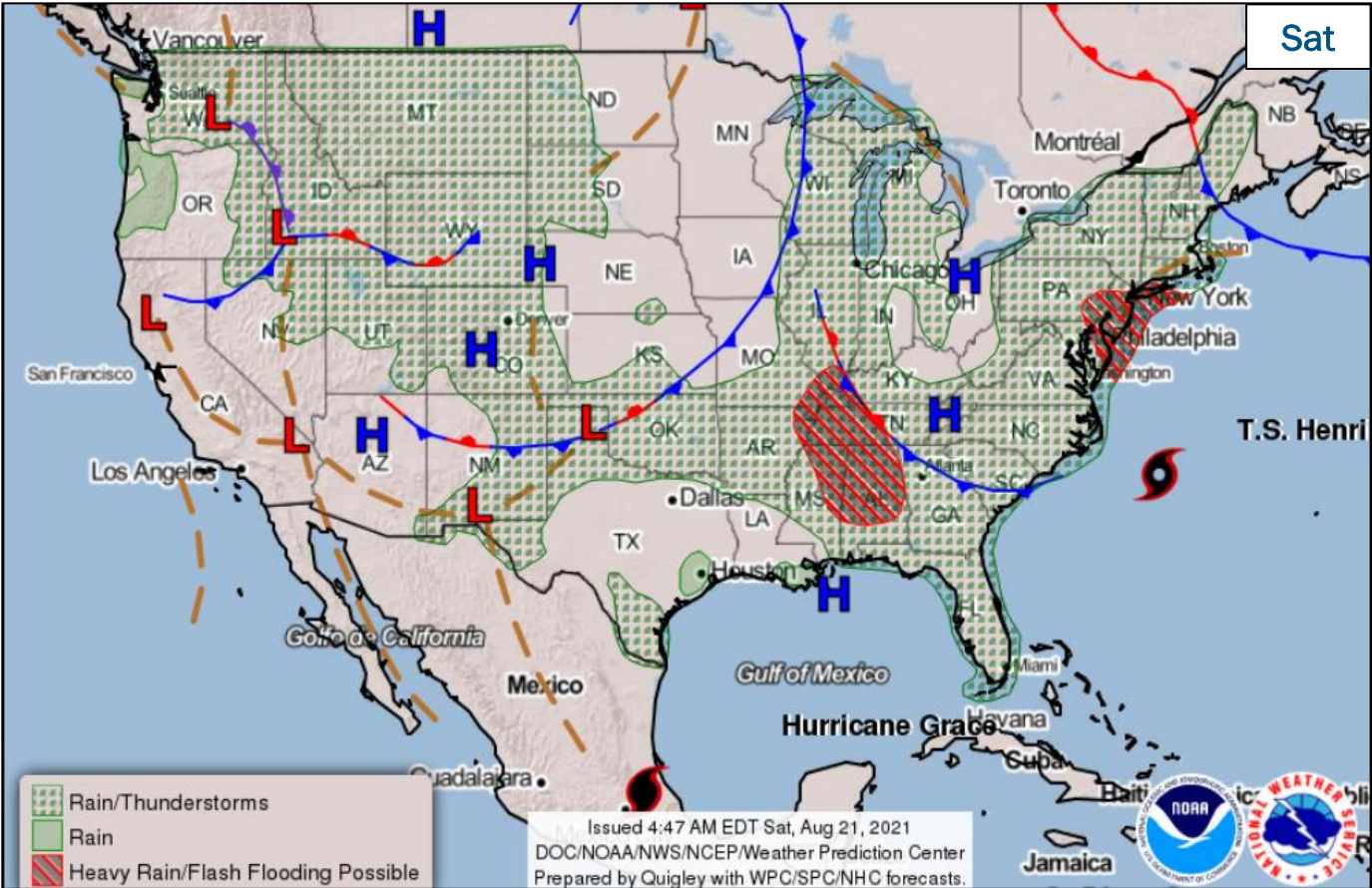
- Logistics:
 - SMT requested to deploy
 - Prepared to pre-stage generators and other commodities as early as Saturday
 - Transportation plan in development
 - ISB Team mobilized to Farmingdale, NY
 - Charlie Pack
 - Fuel



FEMA

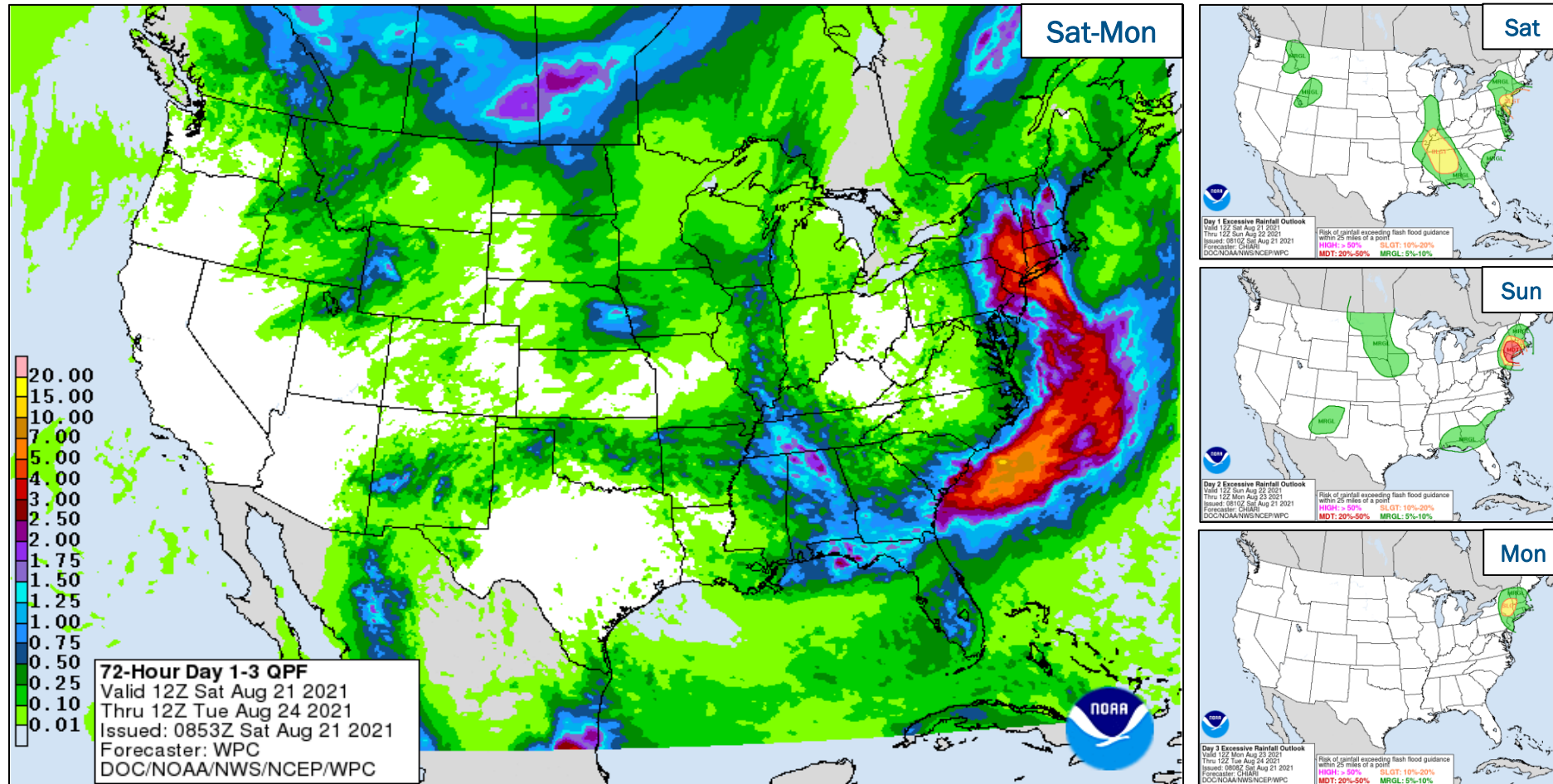
National Watch Center

National Weather Forecast



FEMA

Precipitation & Excessive Rainfall



FEMA

National Watch Center

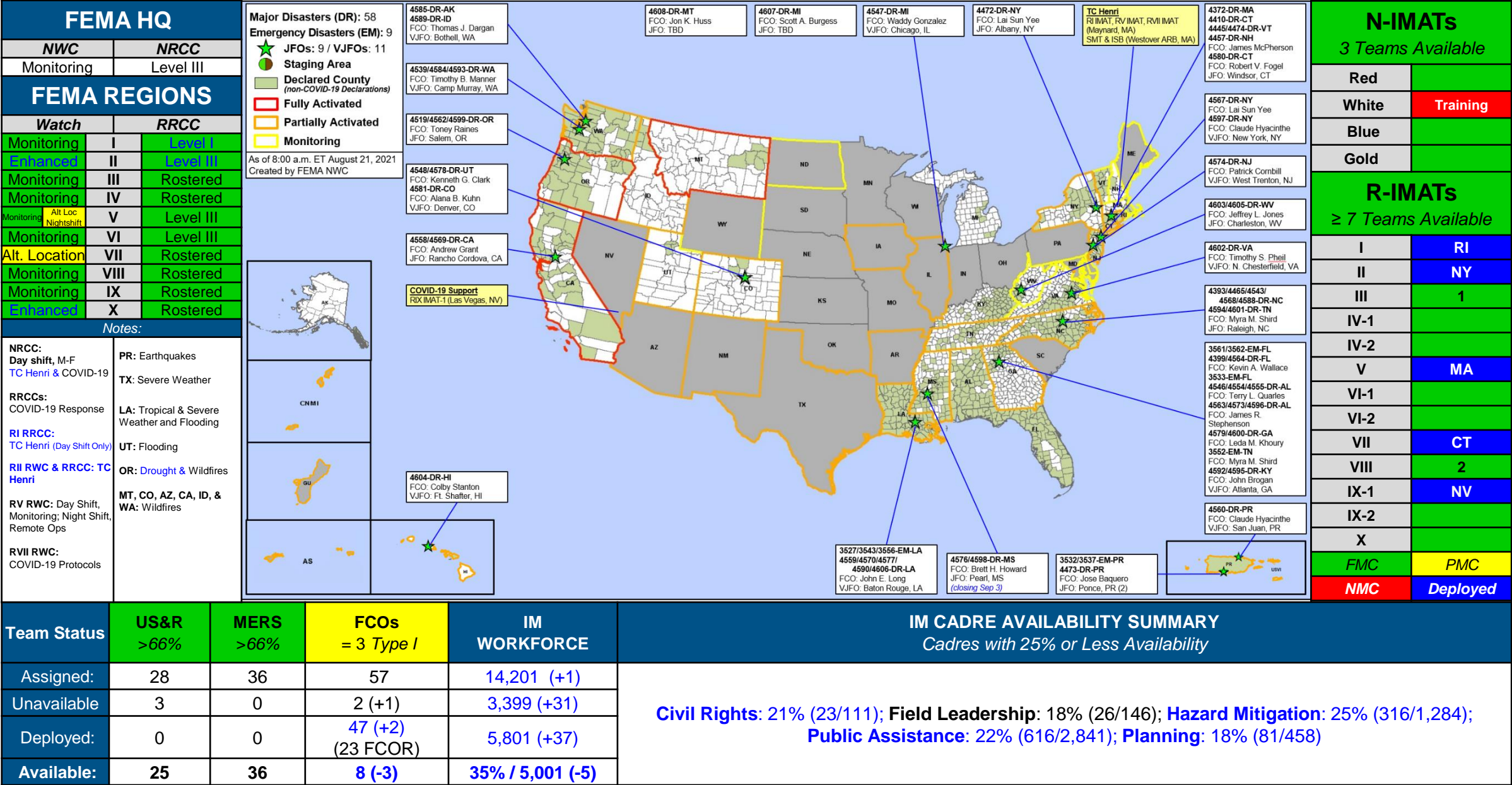
Declaration Amendments

Declaration	Number	Issued	Action
4563-DR-AL	6	August 17	Appoints James R. Stephenson as FCO
4573-DR-AL	3	August 17	Appoints James R. Stephenson as FCO
4596-DR-AL	2	August 17	Appoints James R. Stephenson as FCO
4602-DR-VA	2	August 20	Appoints Timothy S. Pheil as FCO
4606-DR-LA	1	August 20	Added 6 Parishes for Public Assistance



FEMA

FEMA Common Operating Picture





FEMA

Helping people before, during, and after disasters.



Scan to subscribe to this briefing.