

FEMA National Watch Center

# Daily Operations Briefing

Sunday, August 22, 2021

8:30 a.m. ET



**FEMA**

# National Current Ops / Monitoring

---

## New Significant Incidents / Ongoing Ops

- Wildfire Activity – Western U.S.
- Preparations for Tropical Storm Henri
- [Flooding- Tennessee](#)

## Hazard Monitoring

- [Severe thunderstorms possible](#) – Northern/Central Plains
- [Heavy rain and flash flooding possible](#) – Mid-Atlantic
- Tropical Activity
  - Atlantic:
    - [Tropical Storm](#) Henri
    - Disturbance 1: Low ([10%](#))
  - Eastern Pacific:
    - [Disturbance 1](#) (Remnants of Grace): [High \(80%\)](#)
    - Disturbance 2: Medium (60%)

## Disaster Declaration Activity

- [Emergency Declaration Approved](#) – RI
- [Emergency Declaration Requests](#) – CT & NY

## Event Monitoring

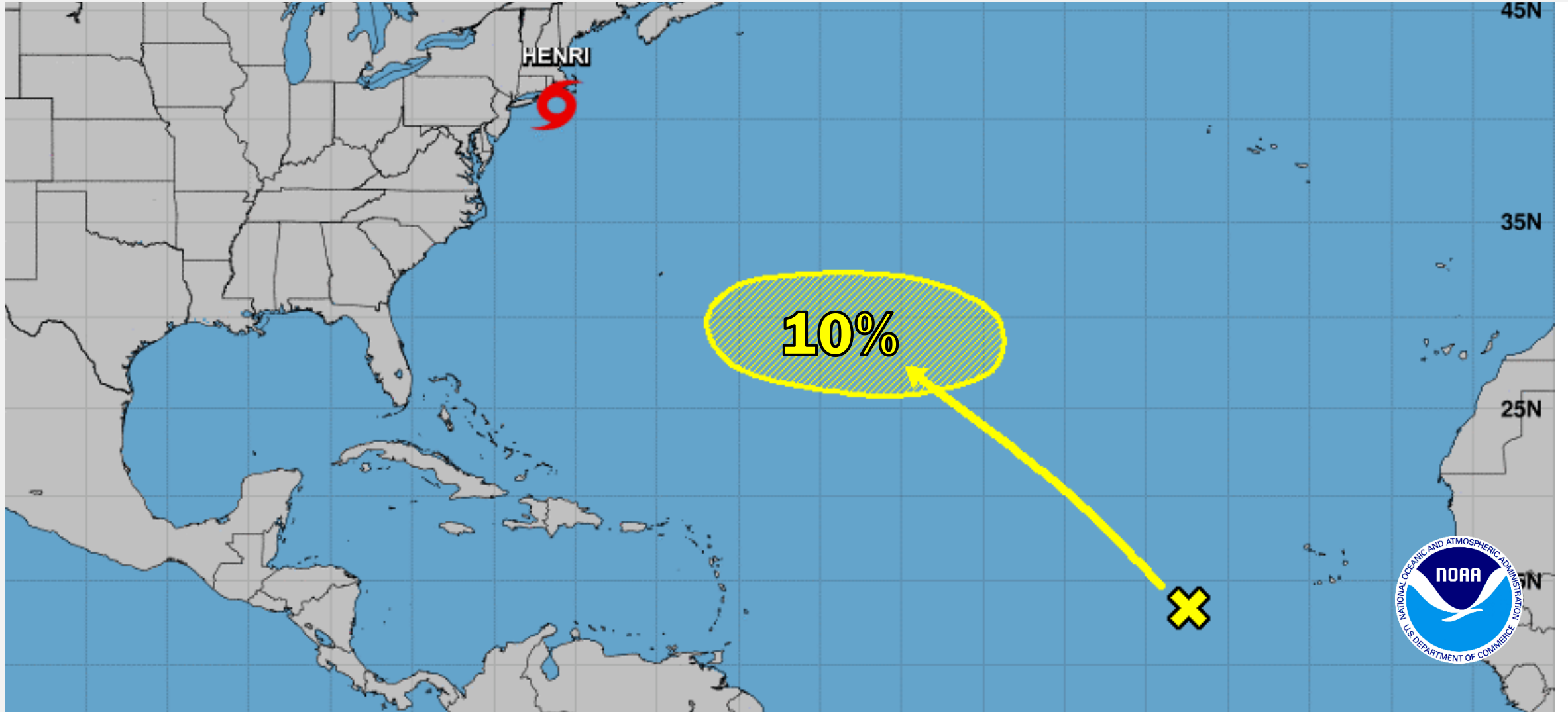
- None



# FEMA

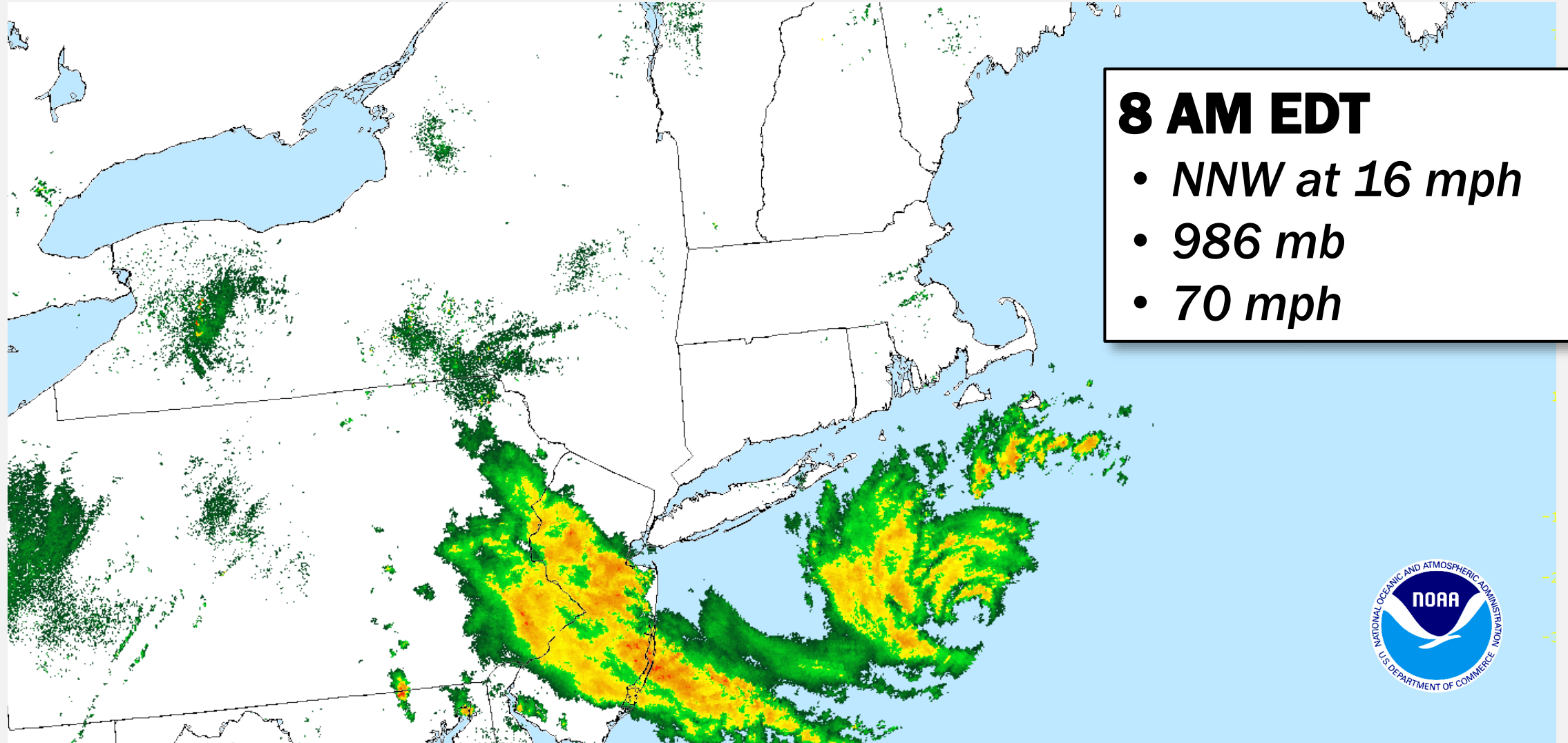
# Atlantic Overview

## TROPICAL OUTLOOK



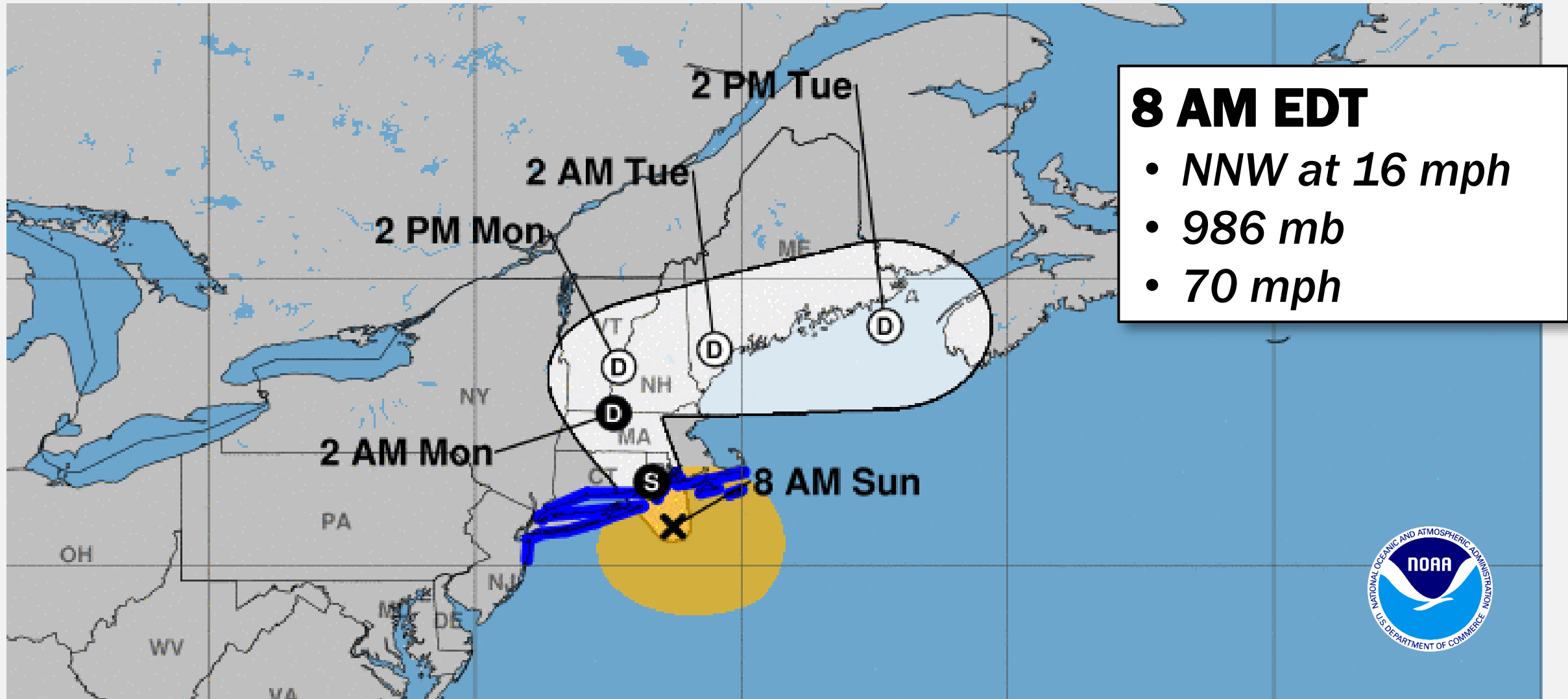
# Tropical Storm Henri

## SATELLITE LOOP



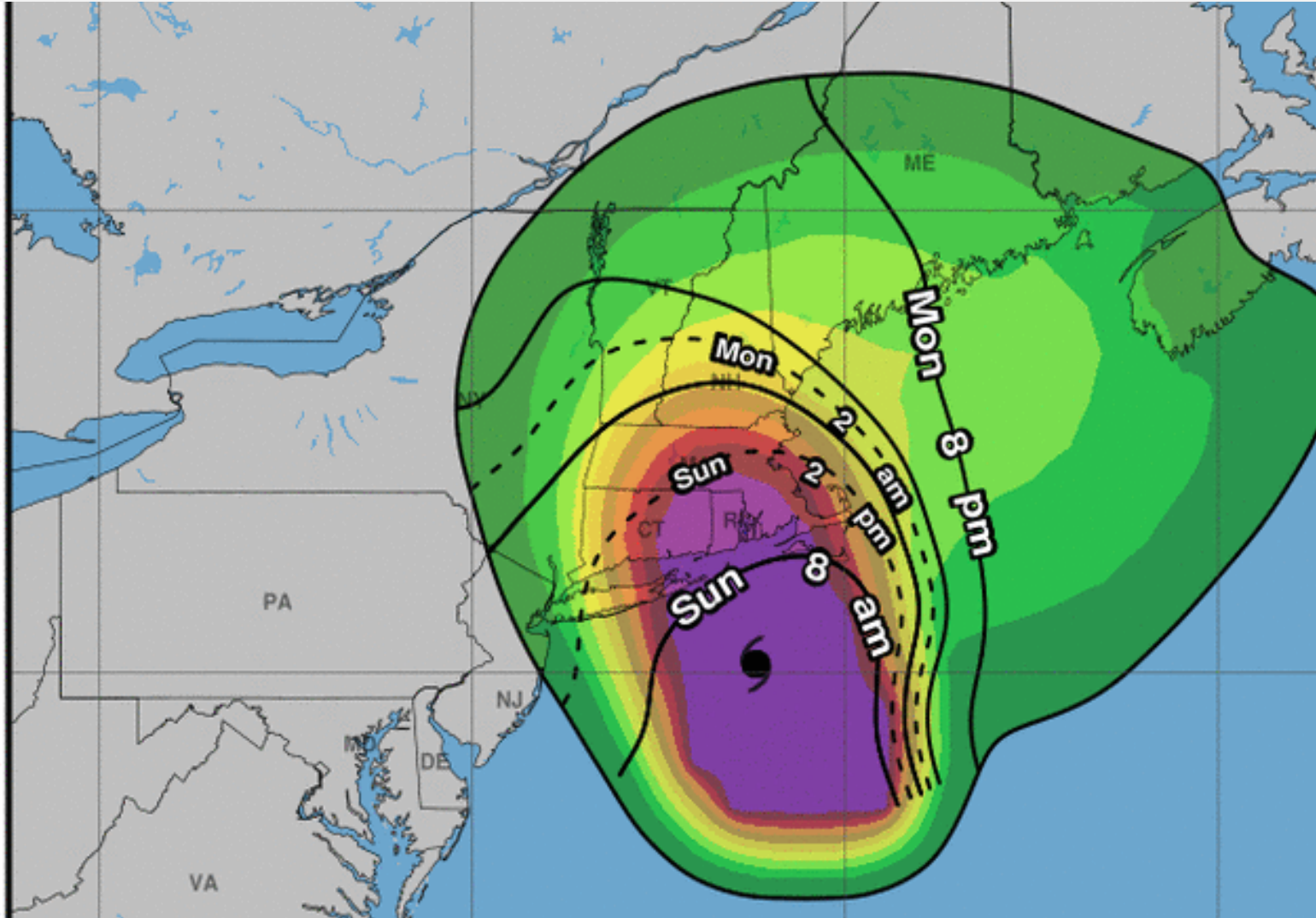
# Tropical Storm Henri

## FORECAST TRACK



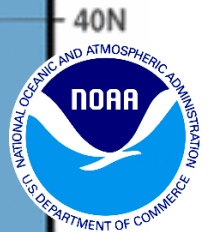
# Tropical Storm Henri

## MOST LIKELY ARRIVAL OF TS WINDS



### TS Wind Probabilities

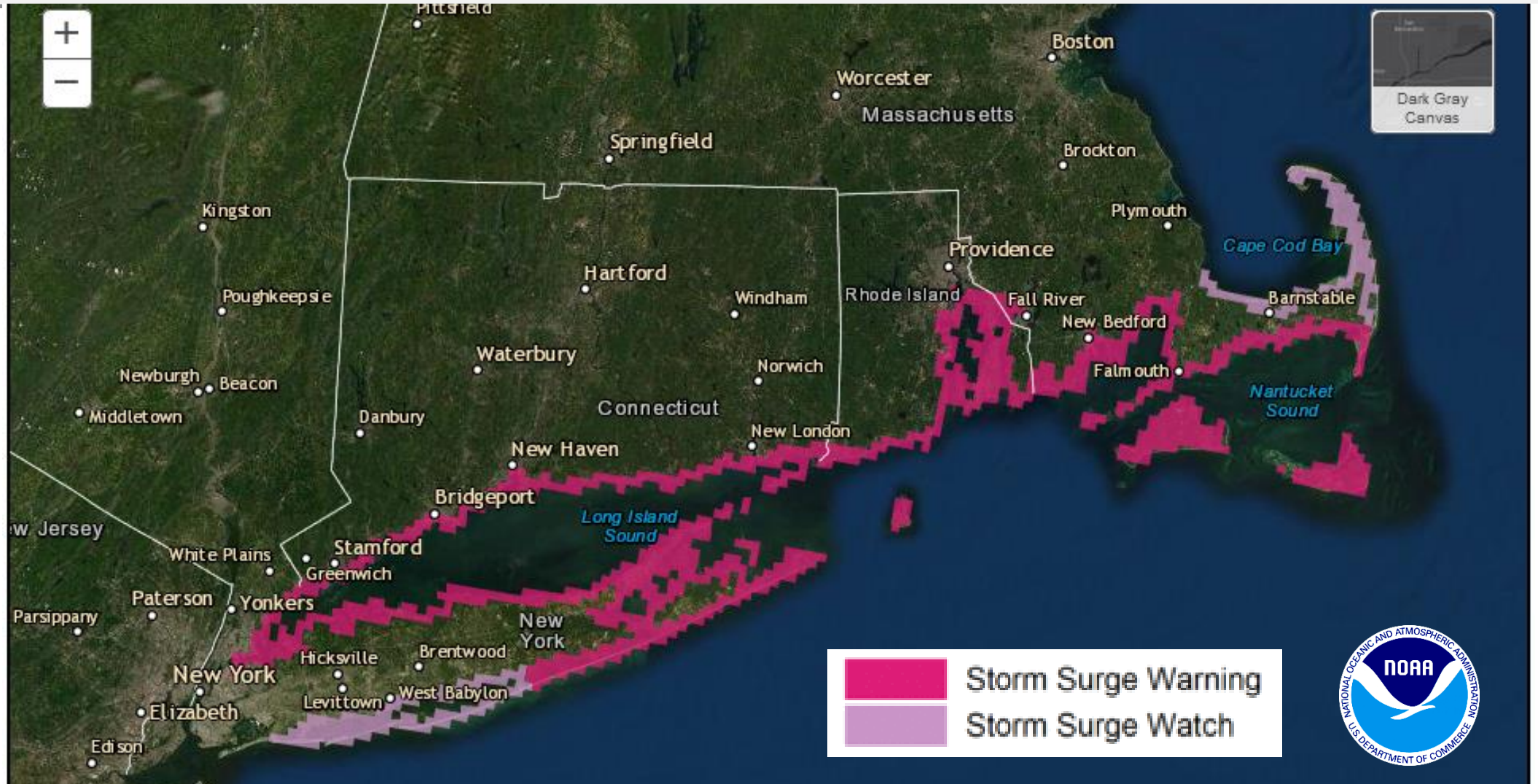
Portsmouth, NH	40%
Boston, MA	80%
Nantucket, MA	82%
Providence, RI	99%
Montauk Point, NY	99%
Islip, NY	35%





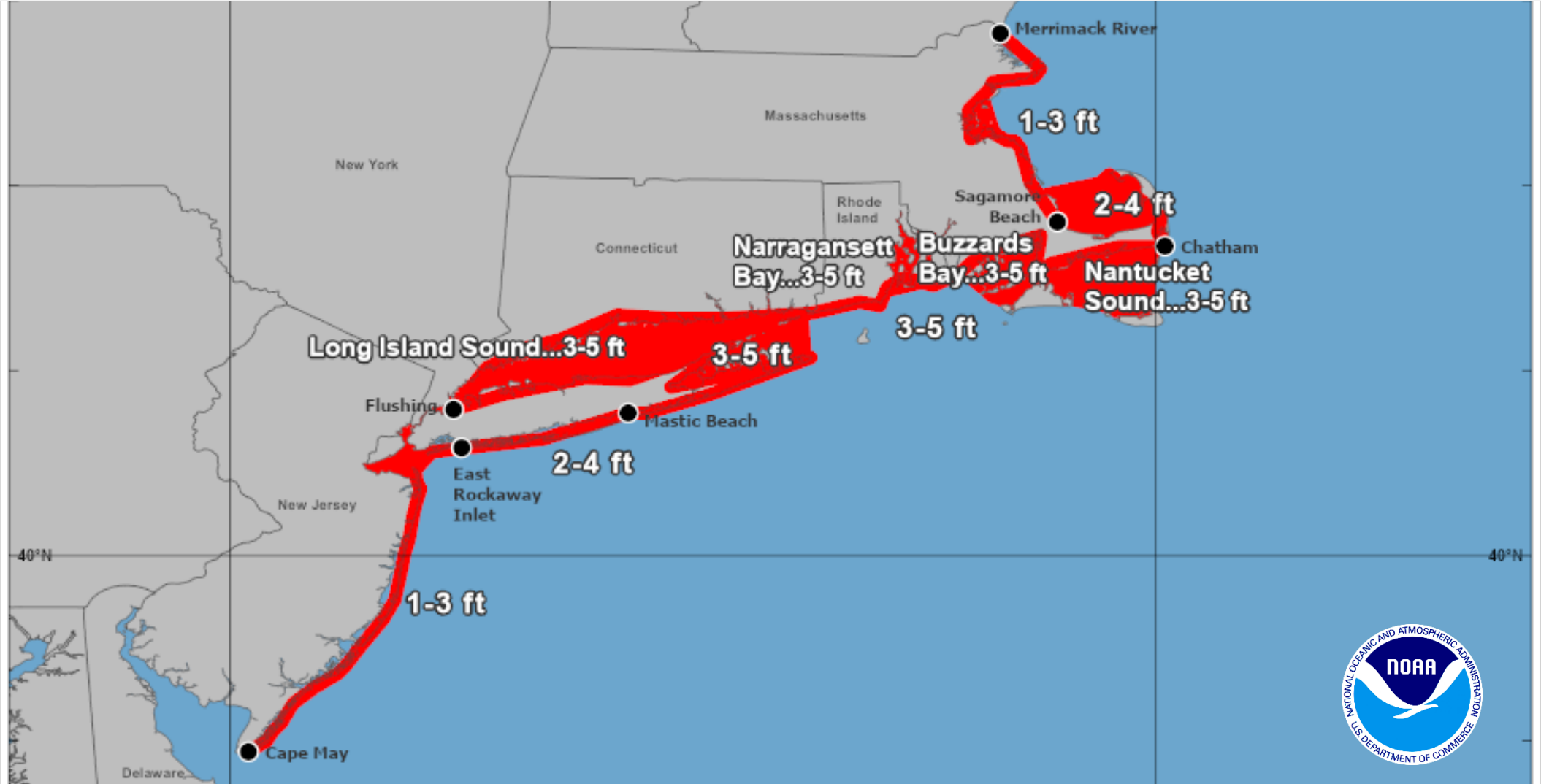
# Tropical Storm Henri

## STORM SURGE WARNING



# Tropical Storm Henri

## PEAK STORM SURGE FORECAST

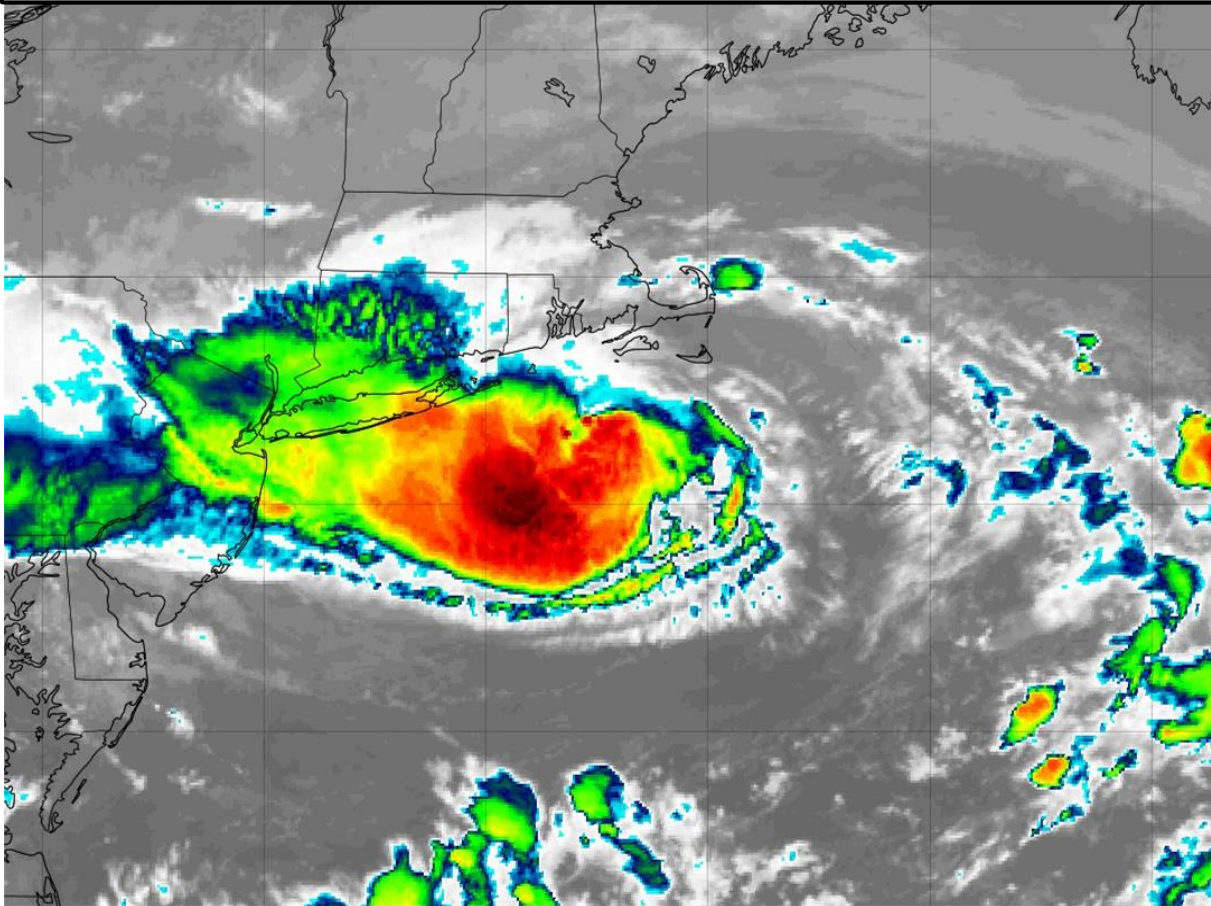




# NWS Weather Prediction Center

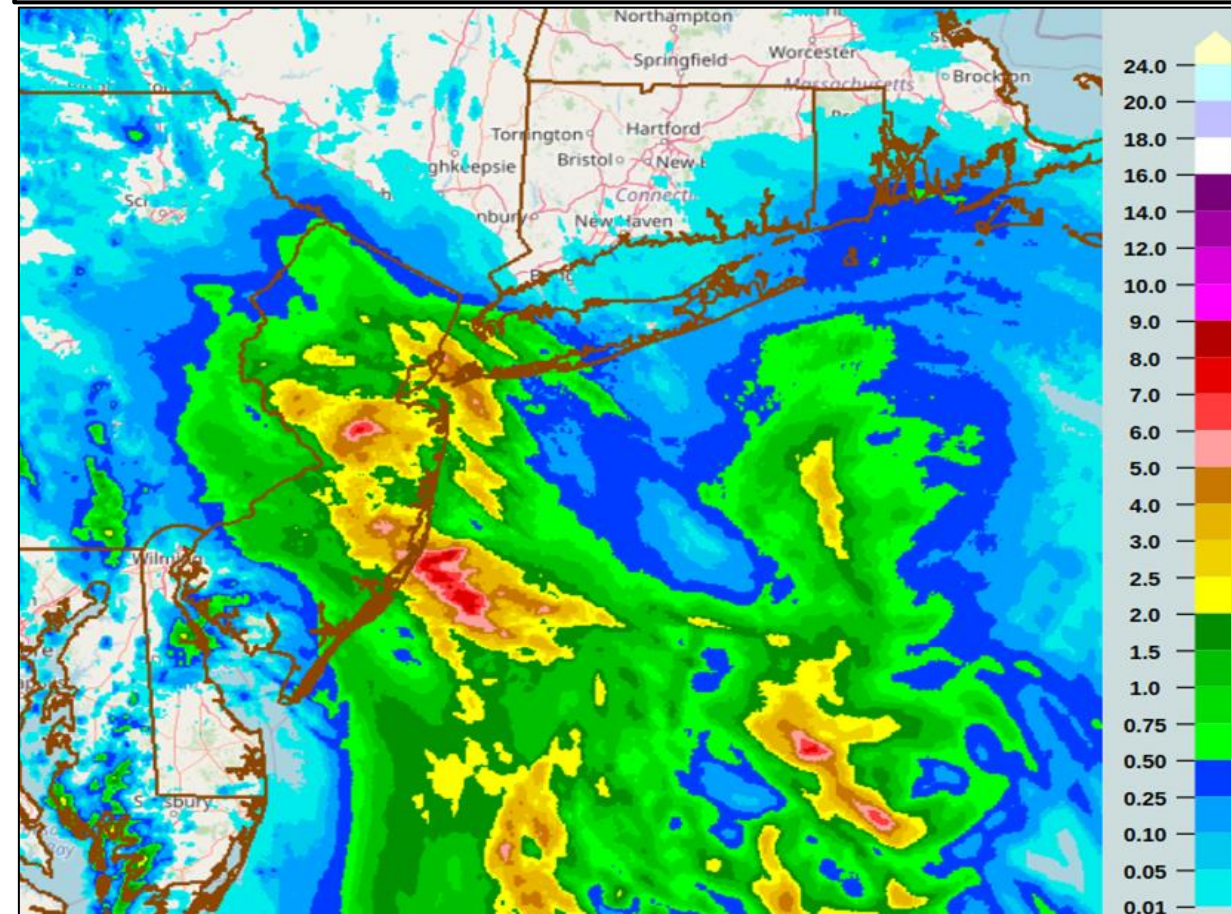
Updated 6:00 am EDT, Sunday, August 22, 2021

## Early Sunday Morning Satellite Imagery



**Tropical moisture pulled westward from Henri's circulation has contributed to significant rainfall overnight near the Jersey shore and along I-95 from Philadelphia to NYC...**

## Estimated Rainfall Past 24-hours Ending 6am EDT



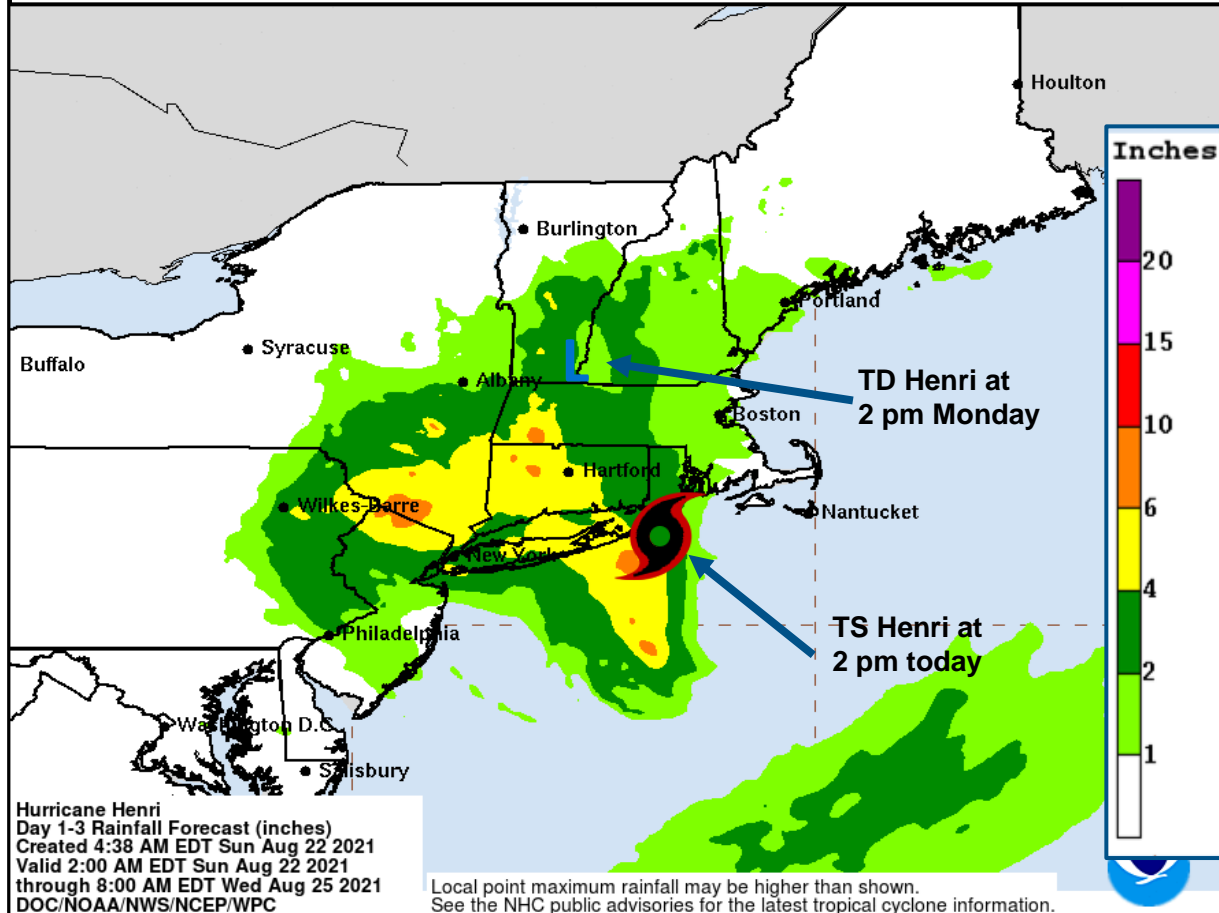
**...rainfall estimates in these areas range from 2-5 inches since Saturday with Flash Flood warnings ongoing early Sunday.**



# NWS Weather Prediction Center

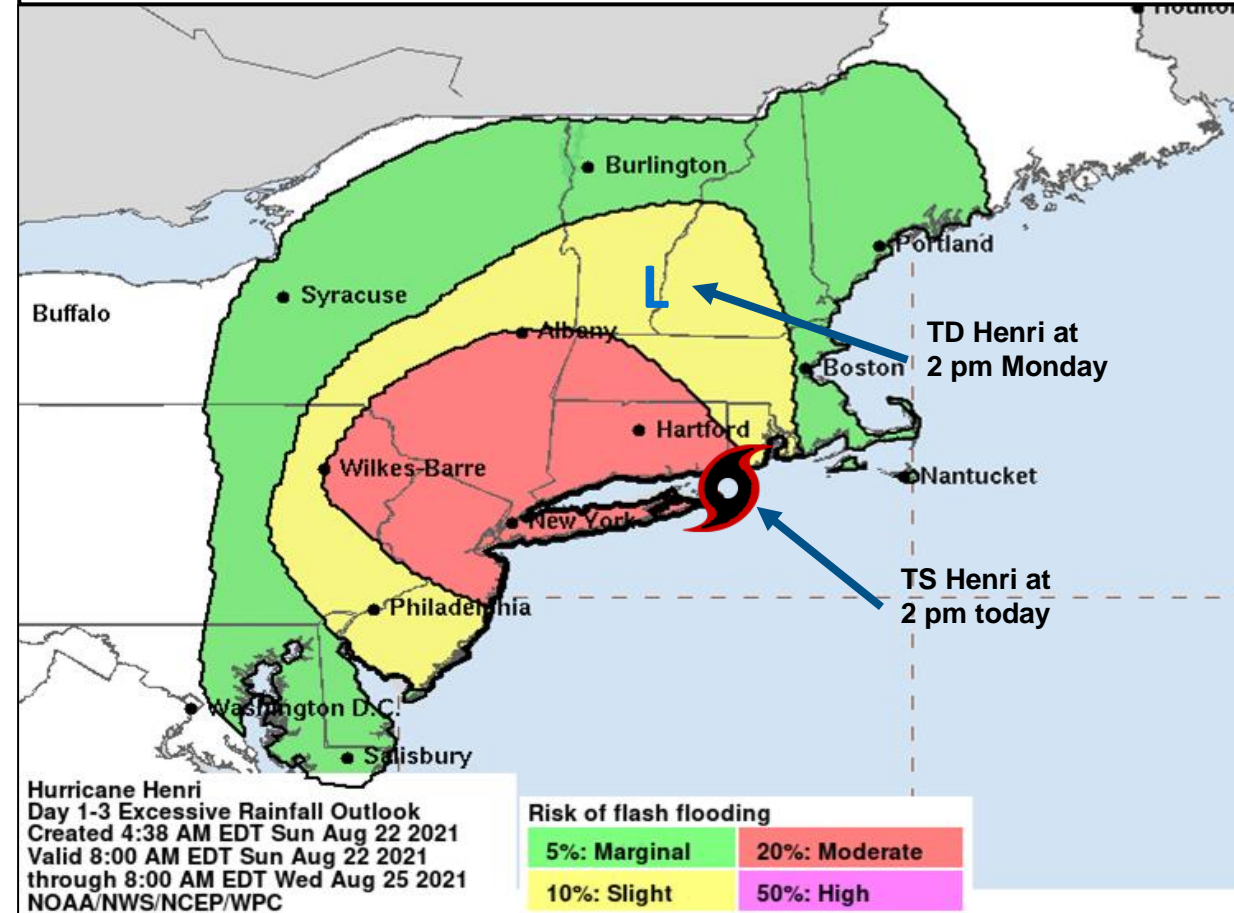
Updated 6:00 am EDT, Sunday, August 22, 2021

## 3-Day Rainfall Forecast through Early Wednesday, Sep. 25



3-6 inches over parts of Long Island, southeast New York, CT, northern NJ, eastern PA, today through Monday with isolated maximum totals nearing 10 inches.

## Excessive Rainfall / Flash Flood Risk, Today - Wednesday

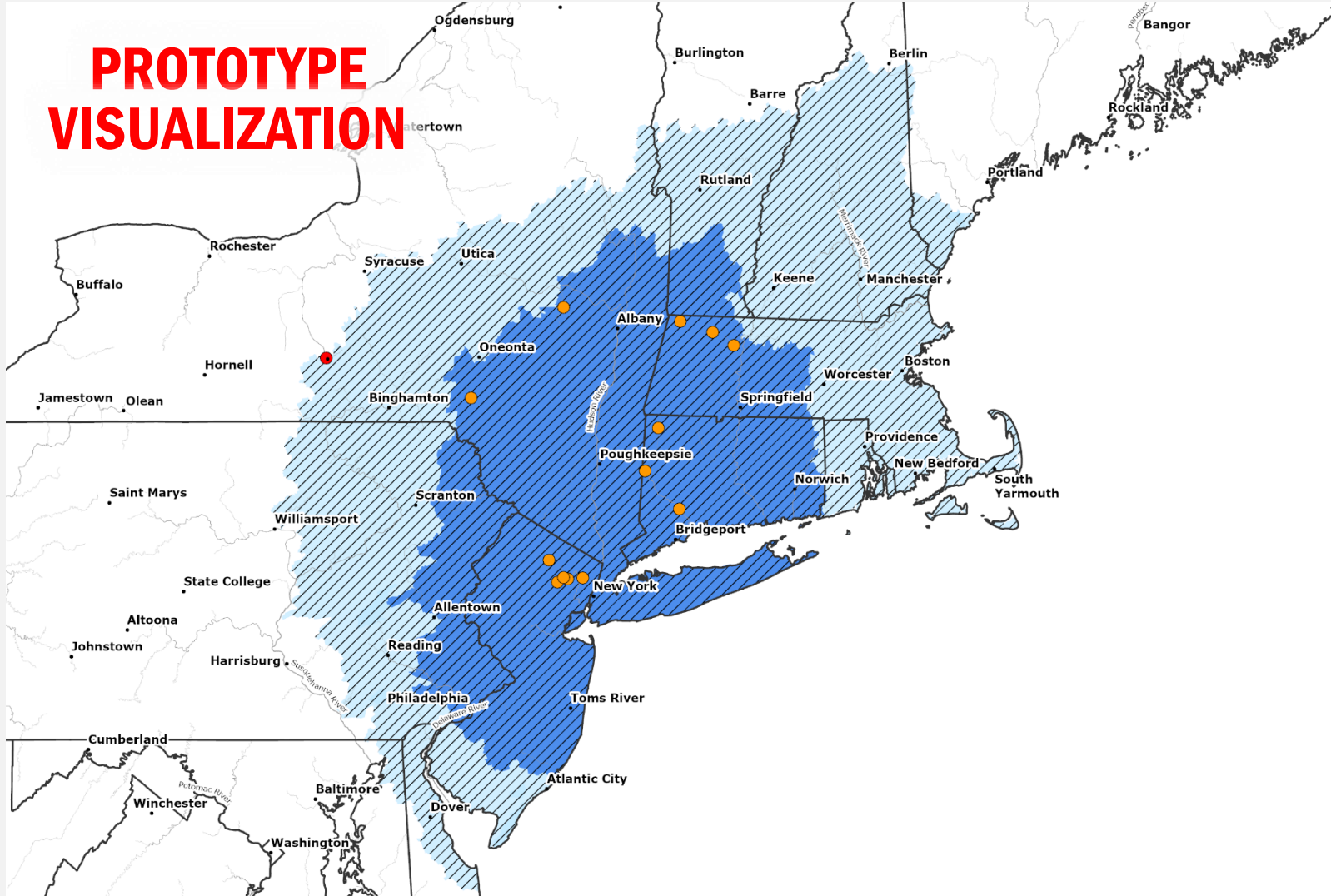


Today through Monday will see the greatest risk of heavy rainfall rates leading to considerable rapid/flash flooding, especially in urban areas and terrain.

# Tropical Storm Henri

## 7-DAY FLOOD HAZARD OUTLOOK

**PROTOTYPE  
VISUALIZATION**



**Potential  
Flooding Impacts**

Catastrophic

Considerable

Limited

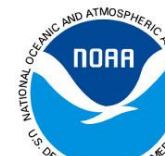
**Timing**



**DAYS 1-3**



**DAYS 4-7**



**NWC** | National Water Center

# Tropical Storm Henri – Region I Preparations



All RI states green (except Health & Medical (COVID-19))

**Situation:** At 8:00 a.m. ET, Tropical Storm Henri was located 40 miles south-southeast of Montauk Point, NY with maximum sustained winds of 70 mph. Henri is moving north at 16 mph. On the forecast track, Henri is expected to make landfall on Long Island or in southern New England late this morning or early this afternoon. After landfall, a turn to the north is expected. Rapid weakening is expected after landfall.

## Warnings/Watches:

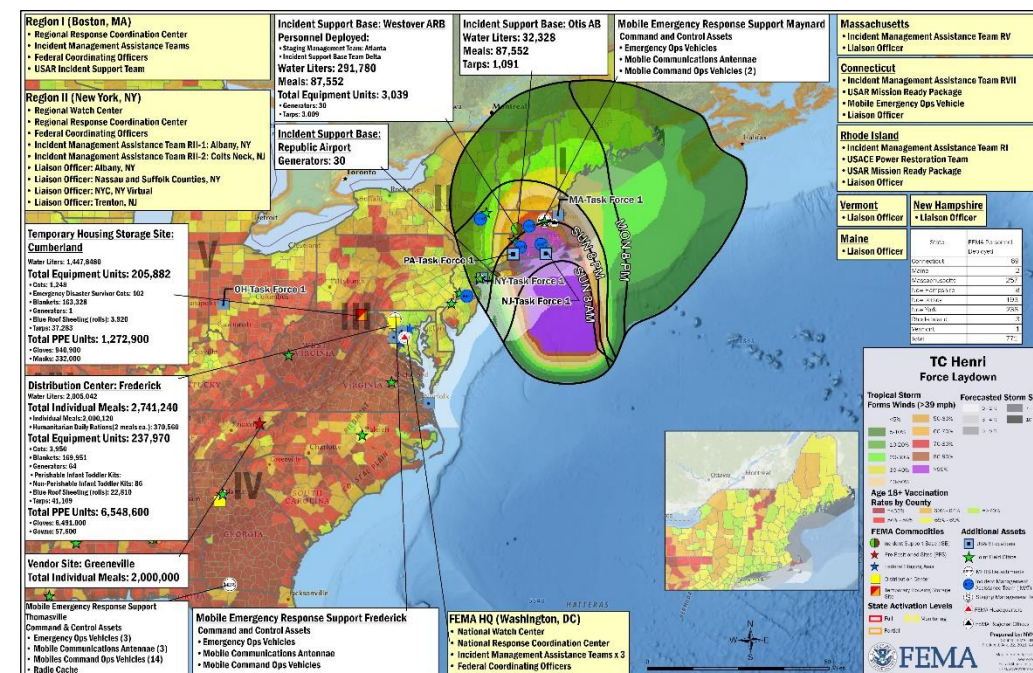
- Storm Surge, Hurricane, and Tropical Storm Warnings in effect for areas of NY, MA, CT, and RI

## State / Local Preparations:

- RI and CT Governor declared State of Emergency
- MA EOC at Full Activation
- CT EOC at Partial Activation; Governor requested an Emergency Declaration
- 14 Congregate Shelters with 36 occupants (ARC as of 7:30 a.m. ET Aug 22, 2021)
- ME EOC at Partial Activation (COVID-19)
- NH and VT EOCs activated (Henri)
- RI EOC at Partial Activation (COVID-19 and Henri)
- Mashantucket Pequot Tribe at Partial Activation
- Mashpee Wampanoag Tribe at Full Activation

## FEMA / Federal Preparations:

- Region I RRCC activated to Level I (day shift only) with all ESFs and DCO
  - IMAT deployed to RI
  - 7 LNOs deployed to each state and tribe
- Type 4 power team expected to arrive Saturday to Westover
  - All major electrical providers mobilizing restoration resources from southern states.
  - Hospitals have capacity to handle potential uptick in trauma patients
- US&R
  - White Incident Support Team (IST) with Liaison (LNO) deployed to Region I RRCC
  - 2 Mission Ready Packages-Water Rescue (MRP-WR) (PA-TF1 and NJ-TF1 staged at CT State Fire Academy); 1 additional MRP (MD-TF1) on alert
- Emergency Declaration FEMA-3563-EM-RI approved August 21



FEMA

National Watch Center



# Tropical Storm Henri – Region II Preparations



All RII states green (except Health & Medical (COVID-19))

**Situation:** At 8:00 a.m. ET, Tropical Storm Henri was located 40 miles south-southeast of Montauk Point, NY with maximum sustained winds of 70 mph. Henri is moving north at 16 mph. On the forecast track, Henri is expected to make landfall on Long Island or in southern New England late this morning or early this afternoon. After landfall, a turn to the north is expected. Rapid weakening is expected after landfall.

## Warnings/Watches:

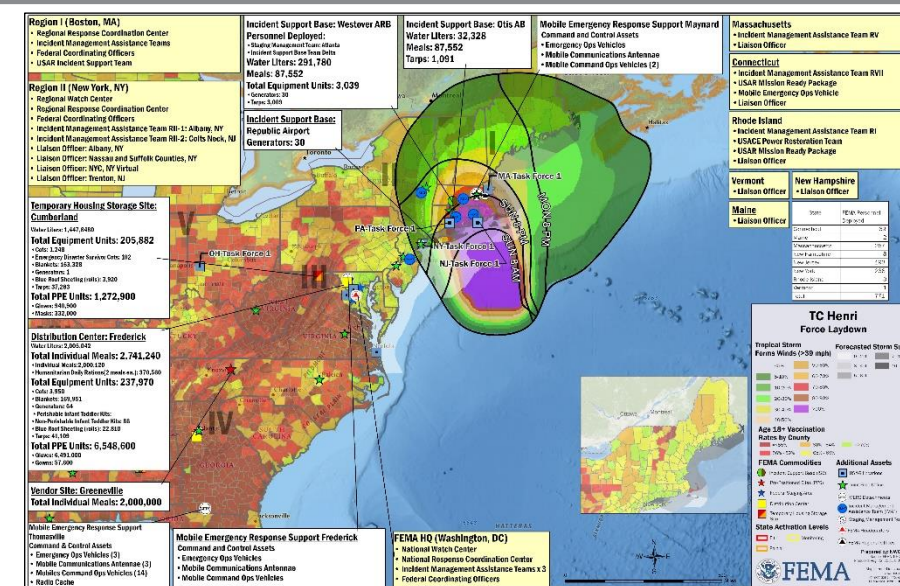
- Storm Surge, Hurricane and Tropical Storm **Warnings** in effect for areas of NY, MA CT, and RI

## State / Local Preparations:

- All states and tribes monitoring; no activation changes
- NYC OEM at Level I (COVID-19); NYC OEM SITROOM activated (TC Henri)
- NY state EOC at Partial Activation (COVID-19 and Henri); will add additional ESFs today; Governor declared a State Disaster Emergency for 8 (+) counties and requested an Emergency Declaration
- NJ EOC at Partial Activation (COVID-19)
- 11 congregate shelters with 89 occupants (ARC as of 7:30 a.m. ET Aug 22, 2021)

## FEMA / Federal Preparations:

- Region II**
  - RWC is monitoring (remote operations)
  - RRCC at Level II, 24/7 with ESFs 1, 2, 3, 6, 8, 12, 14, and DCE
  - IMATs with ESFs 3, 8, 14, and DCE deployed to IOF in Albany, NY, and deployed to RRCC in Colts Neck, NJ
  - LNOs deployed to NY (3) and NJ (1)
- FEMA HQ
  - NWC will go to Enhanced Watch, night shift only, at 8:00 p.m. ET
  - NRCC at Level II, day shift only with all NRCS, all LNOs and ESFs 1, 2, 3, 5, 6, 7, 8, 9, 12, 13, 14, and 15
  - National IMAT Blue on Alert



## Logistics:

- Staging Management Team (SMT) Atlanta deployed to Westover Air Reserve Base, MA
- Incident Support Base (ISB) teams deployed to Westover, MA and Republic Airport, NY
- Charlie pack (60k meals, 90k liters water, 2100 cots, 4500 blankets, 5 infant/toddler kits) en route to Region II
- 97,200 water, 972 tarps staged at Westover AFB; 87,552 meals, 32,328 water, 1,091 tarps staged at Joint Base Cape Cod
- 30 pack generators staged at Westover AFB

## MERS

- 3 MCOVs to NY, 1 MCOV to NJ;
- Assets deployed to RI, CT, MA, and NY



FEMA

National Watch Center



# Flooding Impacts – Tennessee

**Situation:** On Saturday, August 21, 2021, Tennessee experienced catastrophic flooding and flash flooding from the line of rain and storms that moved through the State. The Middle Region Counties affected were Dickson, Hickman, Houston, and Humphreys; with the City of Waverly being heavily impacted.

## LIFELINE IMPACTS/ACTIONS:

### Safety & Security

- Numerous water rescues have been conducted in the counties of Dickson, Humphrey and Hickman and are ongoing
- Currently there are Four (4) open shelters one (1) in Dickson, (1) Hickman County and two (2) in Humphreys (currently there are no COVID-19 restrictions)
- American Red Cross is reaching out to county EMAs to assess needs and provide support
- TN National Guard, THP, and Williamson County are supporting multiple air operations missions across Middle Tennessee
- Civil Air Patrol are conducting arial damage assessments of the impacted area
- Currently there are approximately 10-20 homes reporting flood damage in multiple counties
- Several business sustained flood damage in Houston County
- Evacuation conducted in Hickman County and Houston County

### Health & Medical

- TN SEOC has confirmed (10) fatalities in Humphrey county; and there are reports of several injuries in Hickman and Humphrey counties
- Media is reporting 30 to 40 missing personnel (not yet confirmed)
- Two (2) water treatment plants have been damaged in Humphrey County

### Energy

- Currently there are approximately 2,525 customers without power across the state (Eagle – I as of 8:30 EDT)

### Transportation

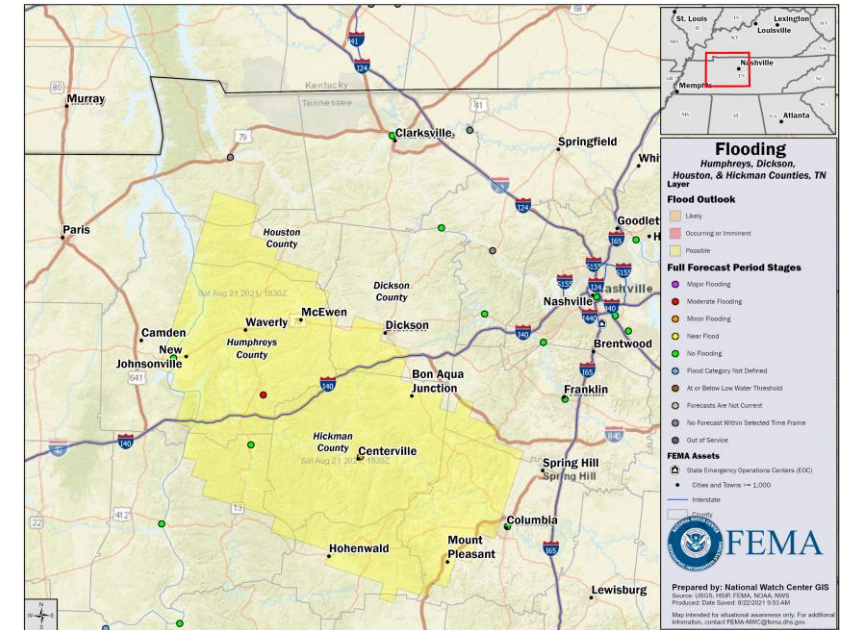
- Several Roads are closed in the counties of Humphrey and Dickson
- Railway traffic has been stopped between Dickson, TN and Waverly, TN
- Three (3) bridges have been washed away in Dickson County

### State/Local Response:

- EOC remains at Level 3 (Partial Activation) due to COVID-19
- Tennessee National Guard, THP, and Williamson County are supporting multiple air operations missions across Middle Tennessee

### Federal Response:

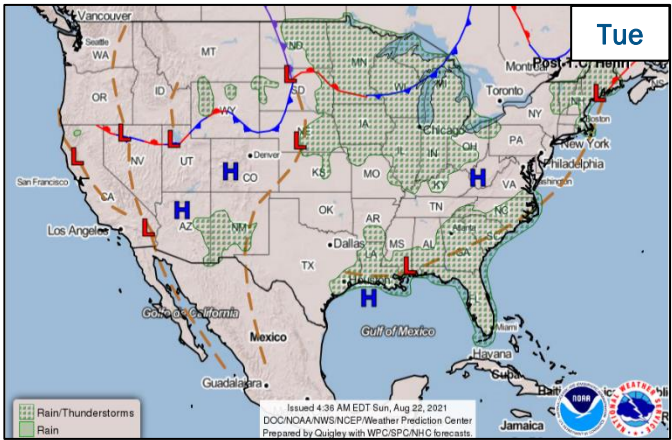
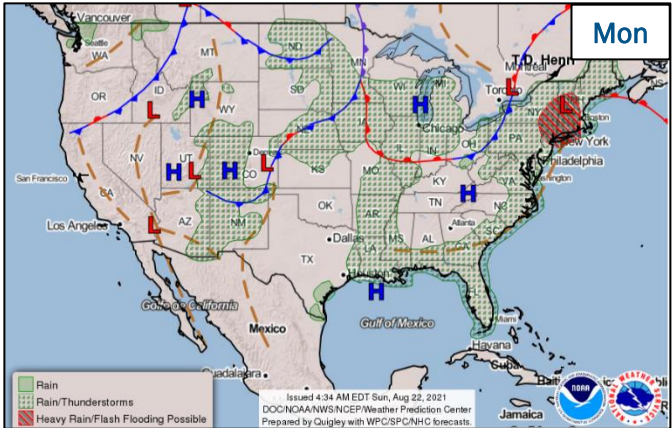
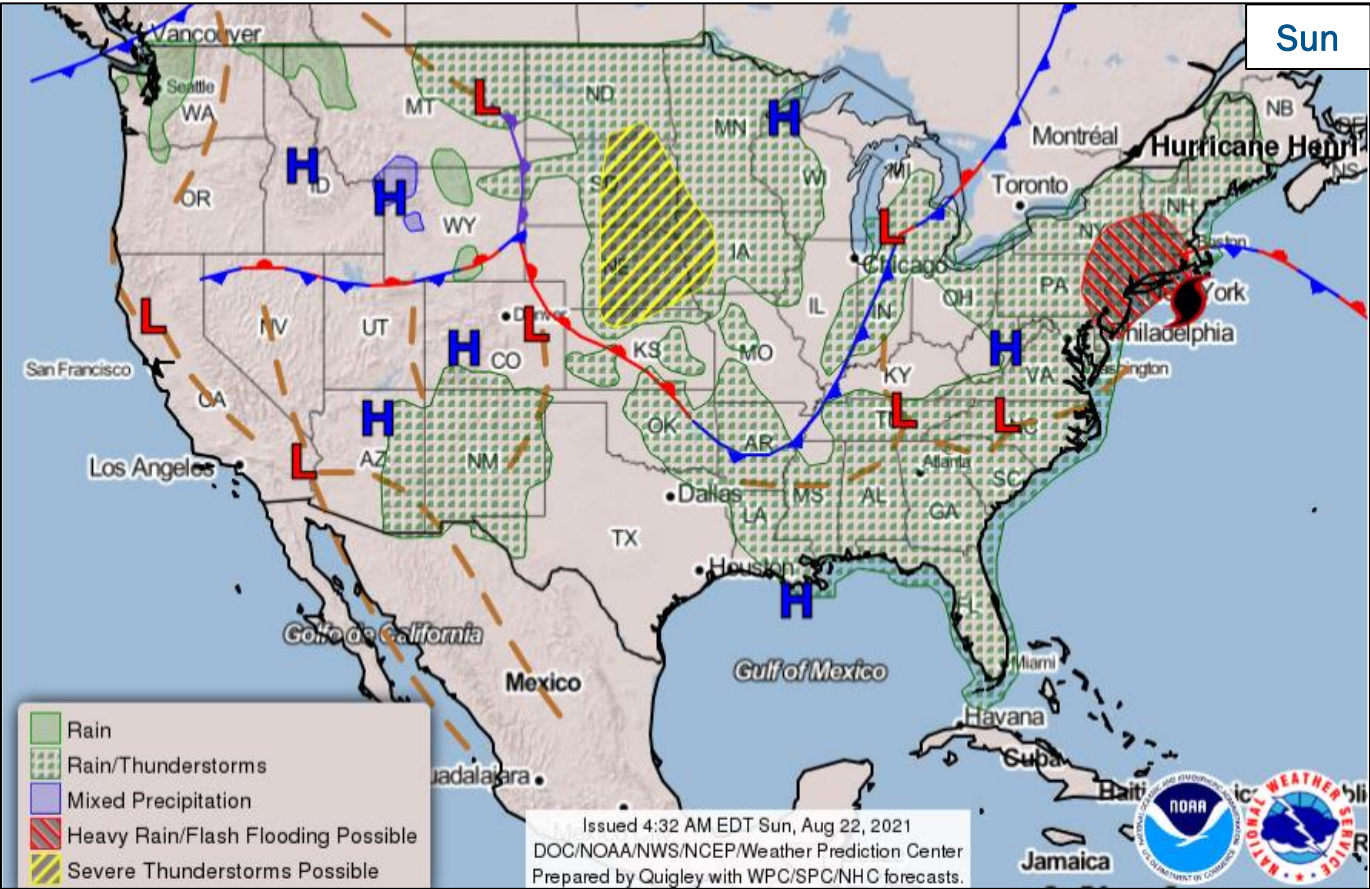
- RRCC is rostered and assigned personnel remain ready to support in the event
- Region 4 Watch Center is at Steady State and will continue to monitor and provide updates



National Watch Center



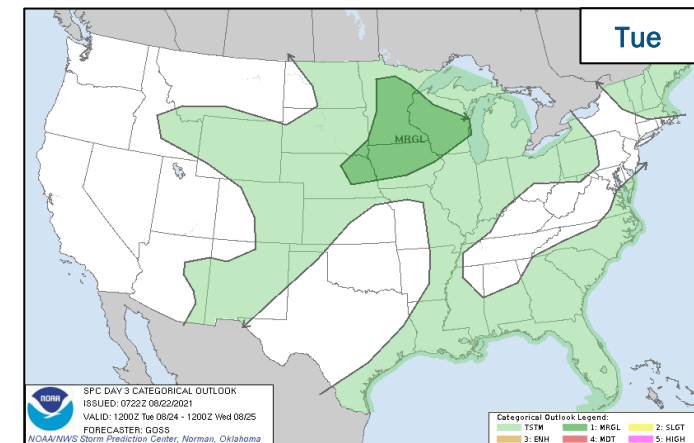
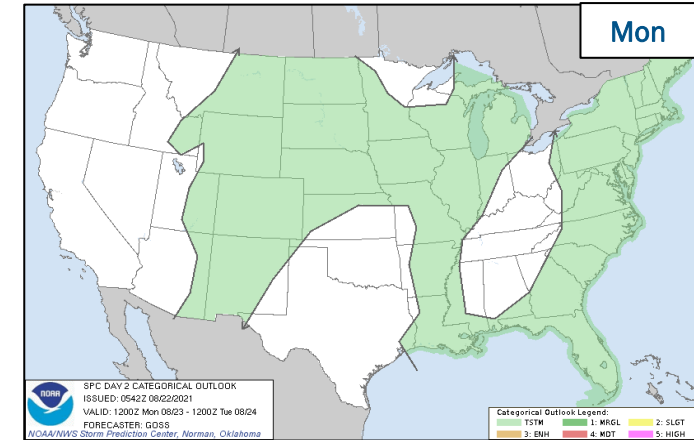
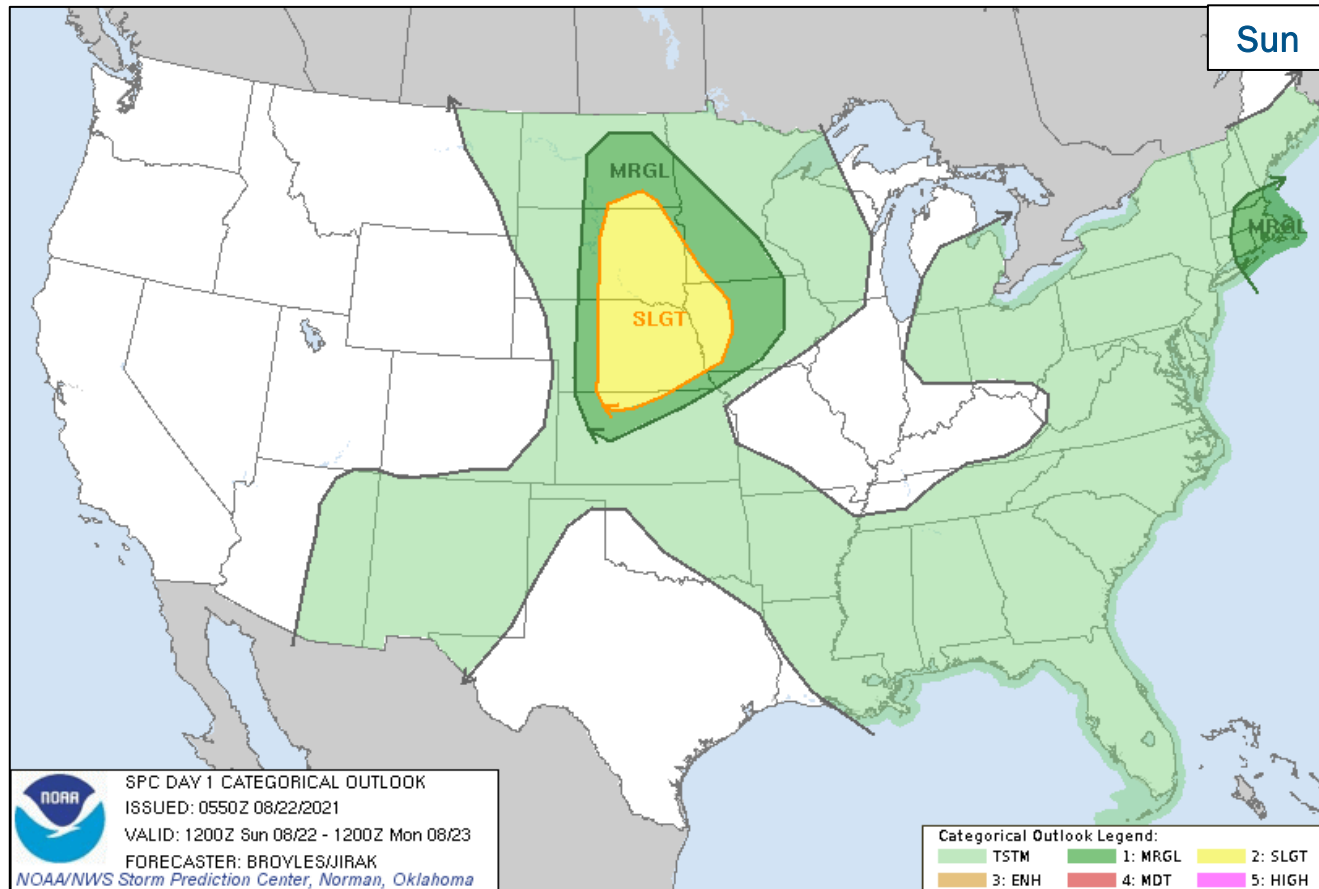
# National Weather Forecast



FEMA



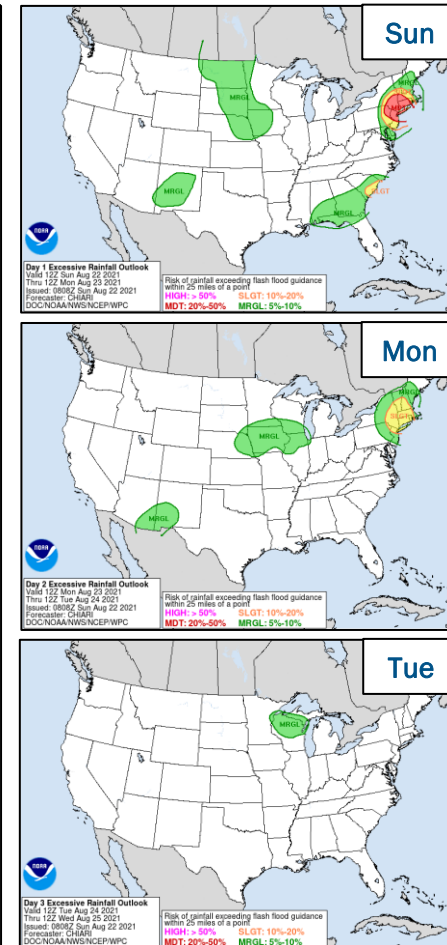
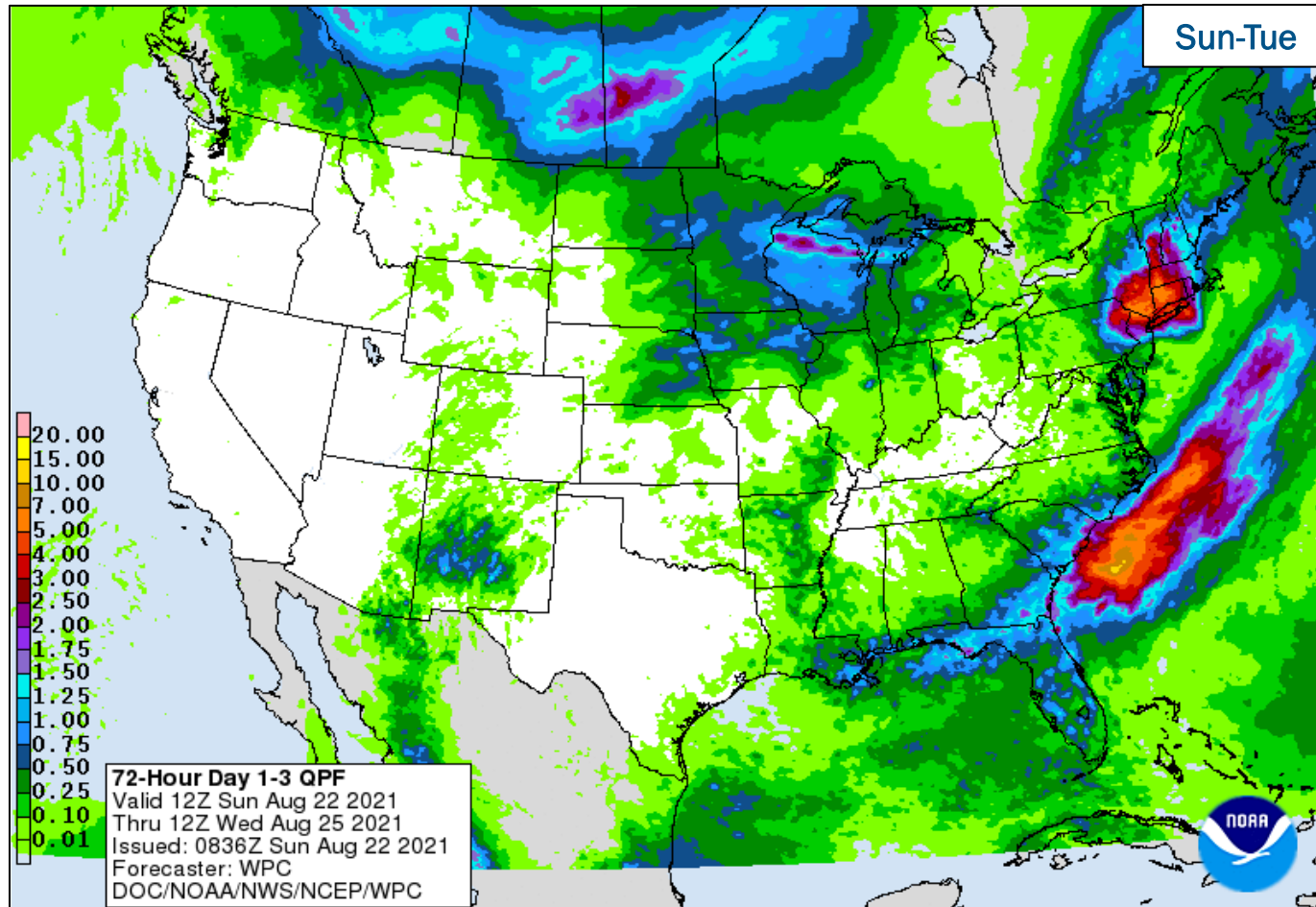
# Severe Weather Outlook



FEMA

National Watch Center

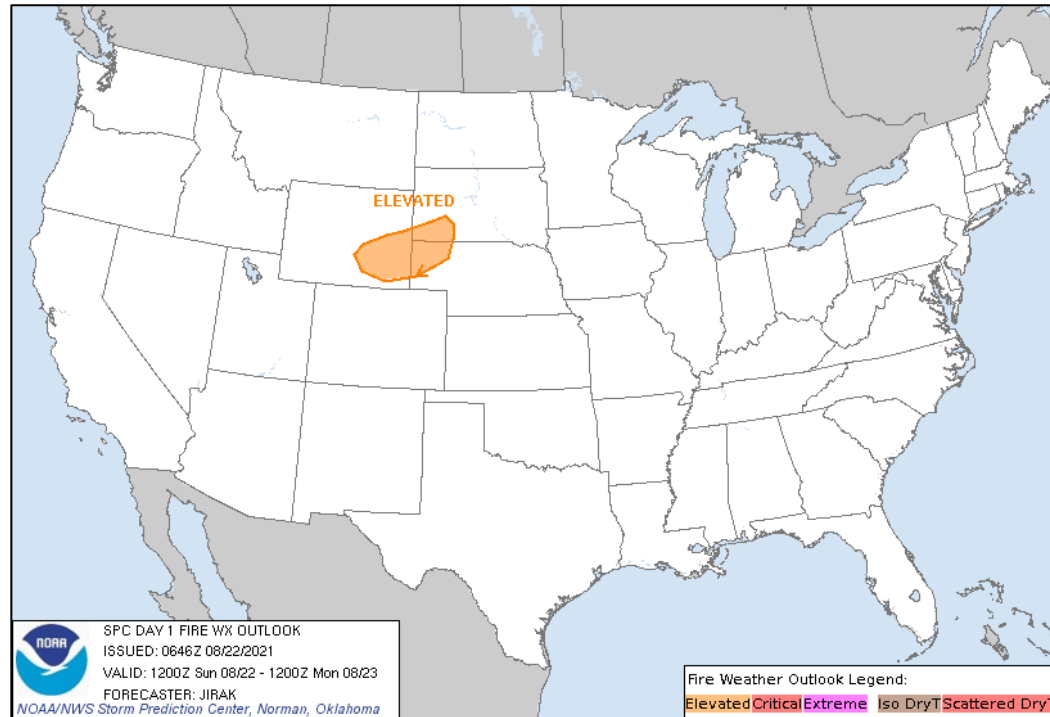
# Precipitation & Excessive Rainfall



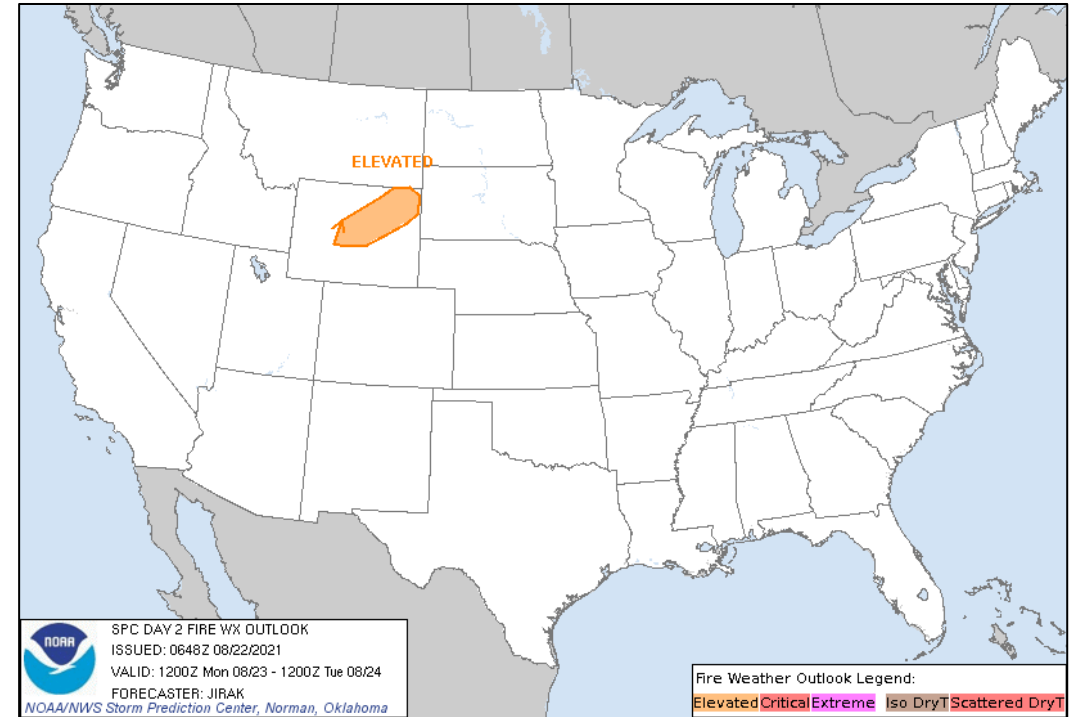
FEMA

National Watch Center

# Fire Weather Outlook



Today



Tomorrow

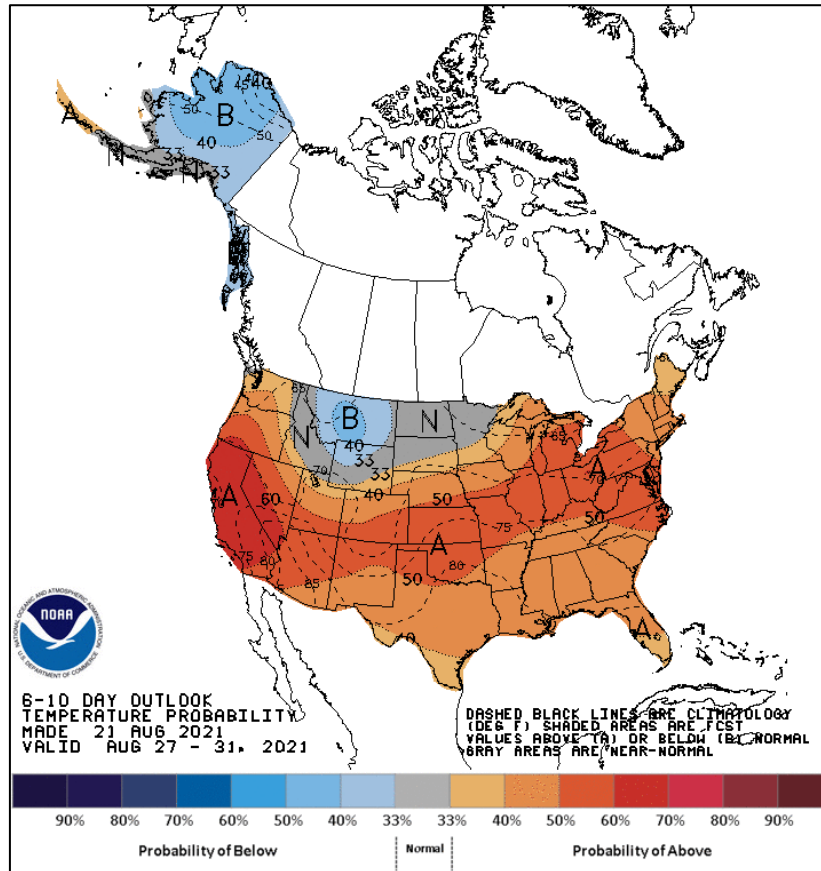


FEMA

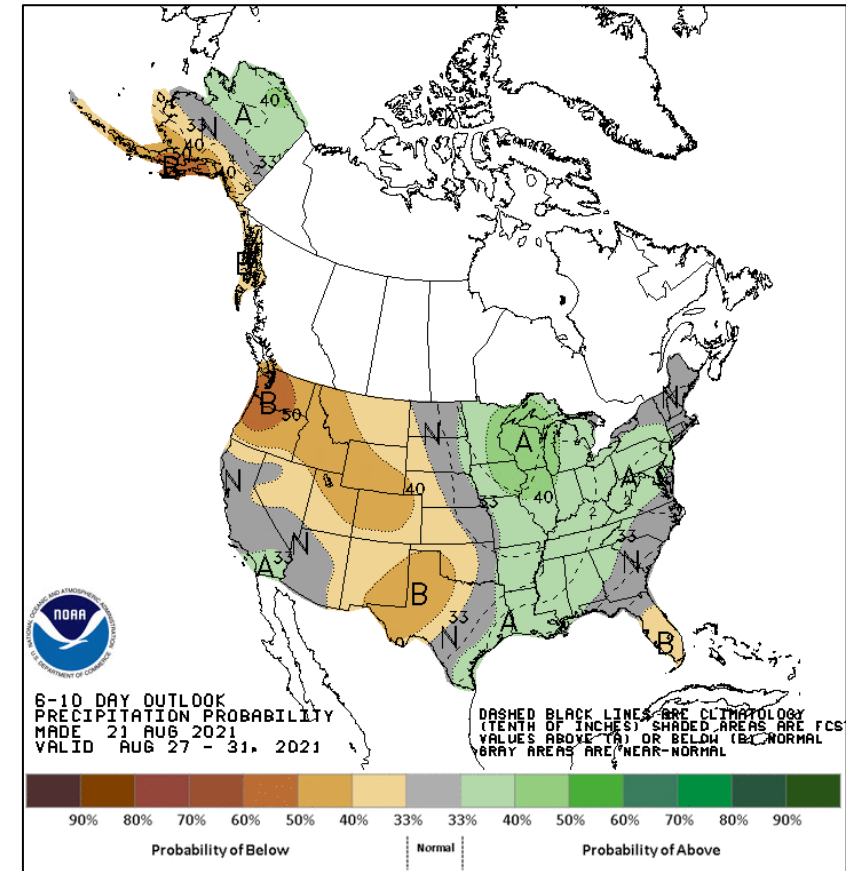
National Watch Center



# Long Range Outlooks – Aug 27-31



6-10 Day Temperature Probability



6-10 Day Precipitation Probability

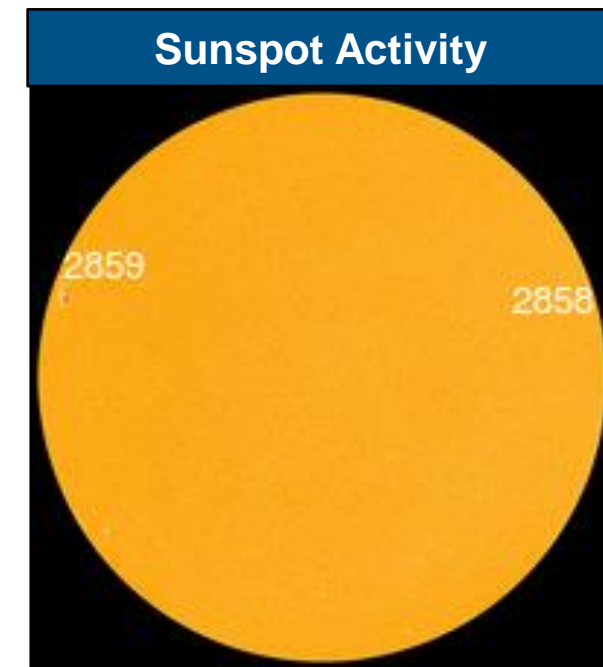
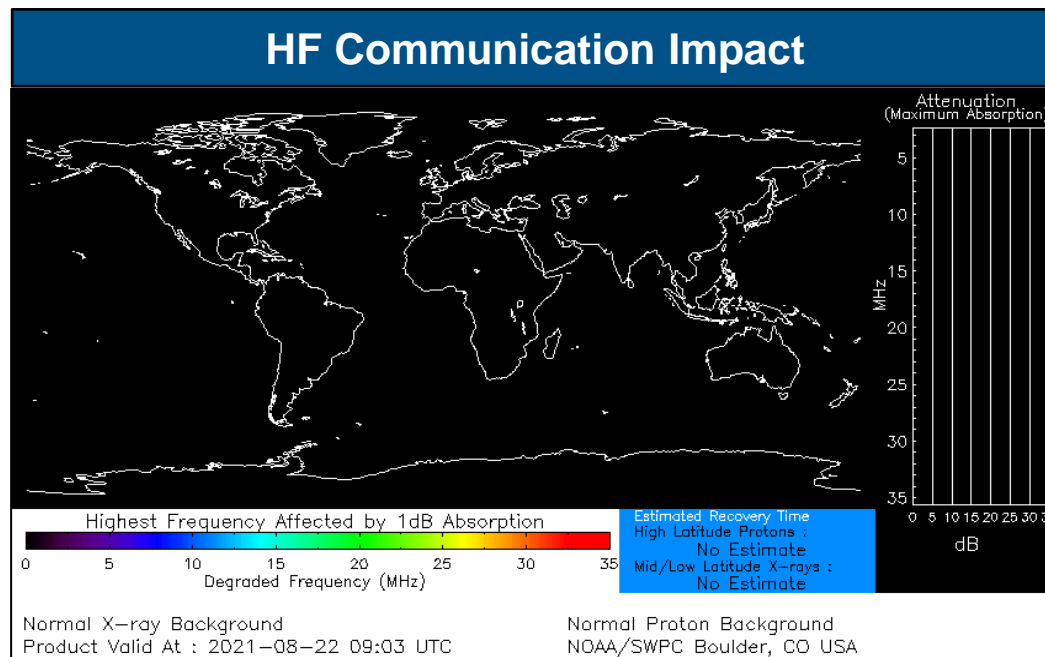


FEMA

National Watch Center

# Space Weather Outlook

	Space Weather Activity	Geomagnetic Storms	Solar Radiation	Radio Blackouts
Past 24 Hours	None	None	None	None
Next 24 Hours	None	None	None	None
For further information on NOAA Space Weather Scales refer to: <a href="http://www.swpc.noaa.gov/noaa-scales-explanation">http://www.swpc.noaa.gov/noaa-scales-explanation</a> For further information on Sunspot Activity refer to: <a href="https://www.swpc.noaa.gov/phenomena/sunspotssolar-cycle">https://www.swpc.noaa.gov/phenomena/sunspotssolar-cycle</a>				

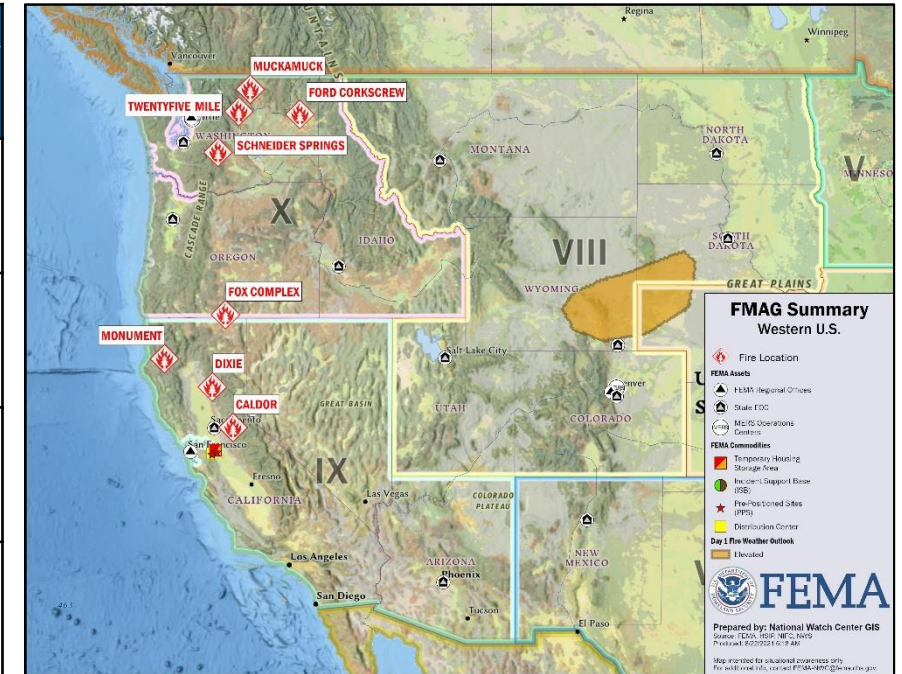


FEMA

National Watch Center

# Wildfire Summary

Fire Name (County, ST)	FMAG #	Acres Burned	Percent Contained	Evacuations	Structures (Homes / Other)			Fatalities / Injuries
					Threatened	Damaged	Destroyed	
Dixie (Plumas, CA)	5400-FM-CA	717,308 (+17,642)	36% (+1)	M: 26,090 (+588)	H: 15,967	H: 55 (-9)	H: 672 (+5)	0 / 6 (+3)
				V: 0	O: 118	O: 35	O: 558 (+1)	
Monument (Trinity, CA)	5412-FM-CA	145,357 (+8,978)	16% (+6)	M: 3,000 (-1,600)	H: 7,100 (+100)	H: 3 (+2)	H: 15 (+4)	0 / 2
				V: 0	O: 6,000 (-100)	O: 0	O: 22 (+1)	
Caldor (El Dorado, CA)	5413-FM-CA	90,107 (+21,477)	0%	M: 33,056 (+8,091)	H: 12,601 (+5,706)	H: 11 (+11)	H: 194 (+96)	0 / 2
				V: 0	O: 512 (+502)	O: 4 (+4)	O: 76 (+70)	
*Fox Complex (Lake, OR) FINAL	5409-FM-OR	8,947 (+1,528)	45% (+6)	M: 0	H: 101 (-3)	H: 0	H: 1	0 / 0
				V: 0	O: 147 (+1)	O: 0	O: 3	



\* Fox Complex includes Patton Meadow & Willow Valley fires

(Evacuations: M = Mandatory / V = Voluntary; Structures: H = Homes and Mixed Commercial/Residential / O = Non-residential Commercial/Other Minor Structures)

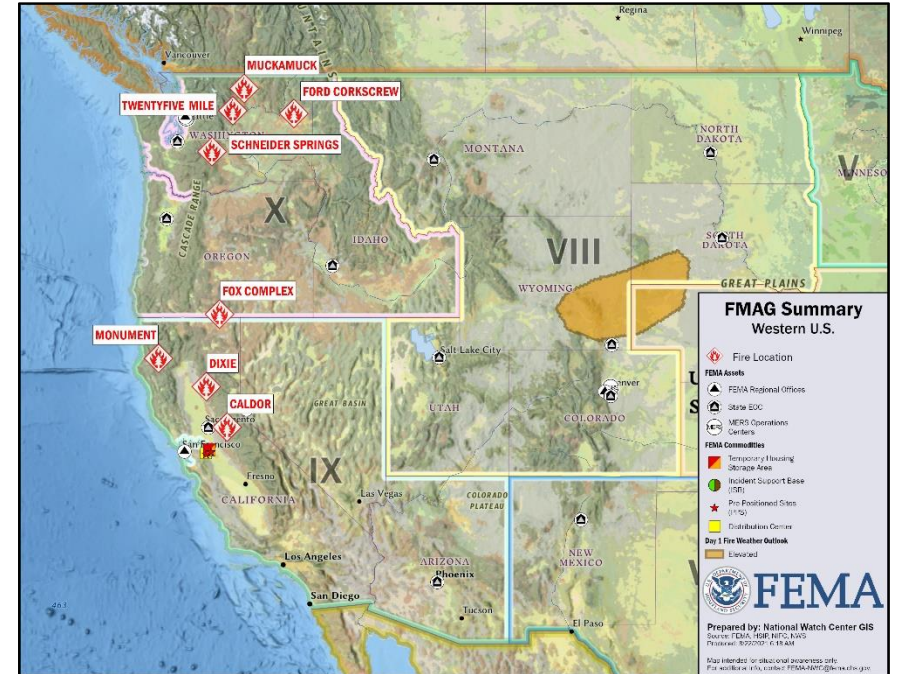


FEMA

National Watch Center

# Wildfire Summary

Fire Name (County, ST)	FMAG #	Acres Burned	Percent Contained	Evacuations	Structures (Homes / Other)			Fatalities / Injuries
					Threatened	Damaged	Destroyed	
Muckamuck (Okanogan, WA)	5410-FM-WA	13,004 (+941)	30% (+20)	M: 50** (-182)	H: 54	H: 0	H: 0	0 / 1
				V: 0	O: 0	O: 0	O: 0	
Ford Corkscrew (Stevens, WA)	5411-FM-WA	15,787 (+768)	44% (+30)	M: 811	H: 881 (+25)	H: 0	H: 18	0 / 2 (+2)
				V: 0	O: 110 (-25)	O: 0	O: 35	
Twentyfive Mile (Chelan, WA)	5414-FM-WA	9,641 (+359)	7% (+2)	M: 1,028 (+1,028)	H: 688 (-84)	H: 0	H: 1	0 / 1
				V: 0	O: 84 (+74)	O: 0	O: 10	
Schneider Springs (Yakima, WA)	5415-FM-WA	64,454 (+8,032)	3% (+3)	M: 240 (- 210)	H: 0	H: 0	H: 0	0 / 1 (+1)
				V: 0	O: 0	O: 0	O: 0	



\*\* Includes 50 emergency responders evacuated

(Evacuations: M = Mandatory / V = Voluntary; Structures: H = Homes and Mixed Commercial/Residential / O = Non-residential Commercial/Other Minor Structures)



**FEMA**

National Watch Center

# Joint Preliminary Damage Assessments

Region	State / Location	Incidents	IA	Number of Counties		Start – End
			PA	Requested	Complete	
I	NH	Severe Storms and Flooding Jul 29-30	IA	0	0	N/A
			PA	2	0	TBD
		Severe Storms and Flooding Jul 17-19	IA	0	0	N/A
			PA	3	1	8/4 – TBD
	VT	Severe Storms and Flooding Jul 29	IA	0	0	N/A
			PA	2	0	8/4 – TBD
	MA	Severe Storms and Flooding Jul 16-21	IA	0	0	N/A
			PA	5	0	8/10 – TBD
IV	NC	Severe Weather Aug 16	IA	0	0	N/A
			PA	4	0	8/25 – TBD
IX	CA	August Wildfires	IA	6	3	8/11 – TBD
			PA	6	2	8/11 – TBD



FEMA

National Watch Center



# Declaration Approved – Rhode Island

**Declaration:** Emergency Declaration

**Date Requested:** Aug 20

**Date Approved:** Aug 21

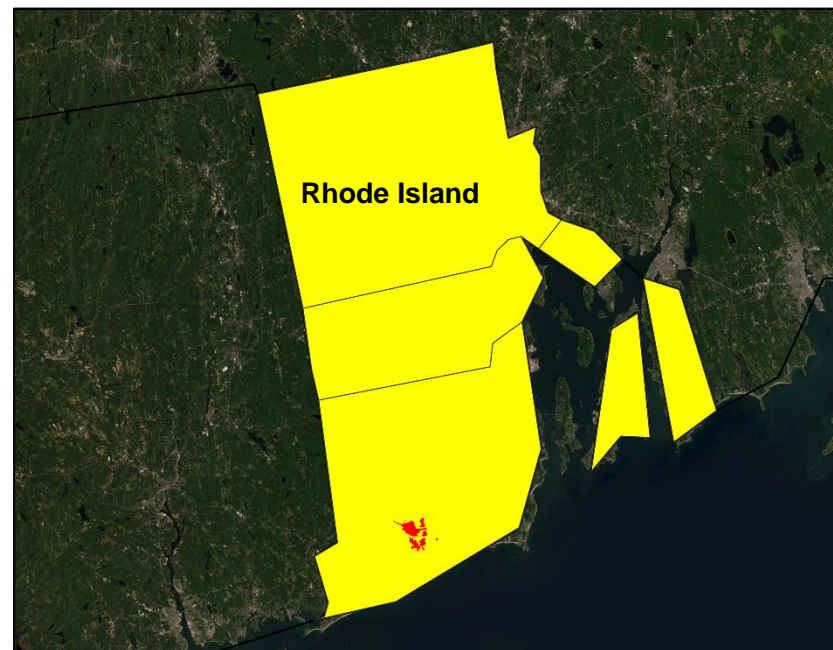
**Incident:** Hurricane Henri

**Incident Period:** August 20, 2021 and continuing

**Provides:**

- **PA:** Emergency protective measures (Category B), limited to direct federal assistance and reimbursement for mass care including evacuation and shelter support at 75 percent federal funding for 5 counties and 1 Tribe

**FCO:** Benjie Abbott



**FEMA**

National Watch Center

# Declaration Approved – Connecticut

**Declaration:** Emergency Declaration

**Date Requested:** Aug 20

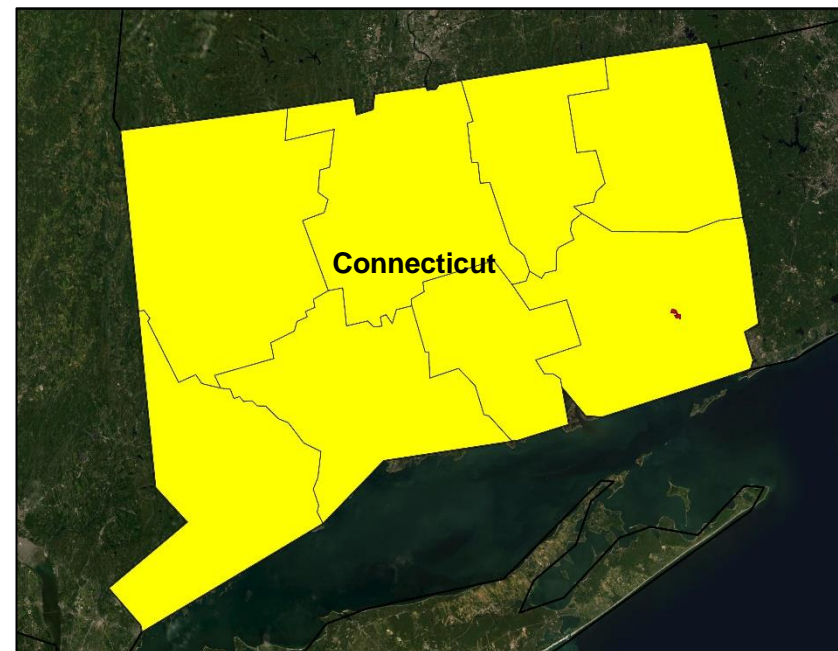
**Date Approved:** Aug 21

**Incident:** Hurricane Henri

**Incident Period:** August 21, 2021 and continuing

**Requested:**

- **PA:** Debris removal and emergency protective measures (Categories A and B), including direct federal assistance for 8 counties and 2 tribes
- Cost share adjustment of 100 percent for the first 72 hours



■ PA



**FEMA**

# Declaration Approved – New York

**Declaration:** Emergency Declaration

**Date Requested:** Aug 21

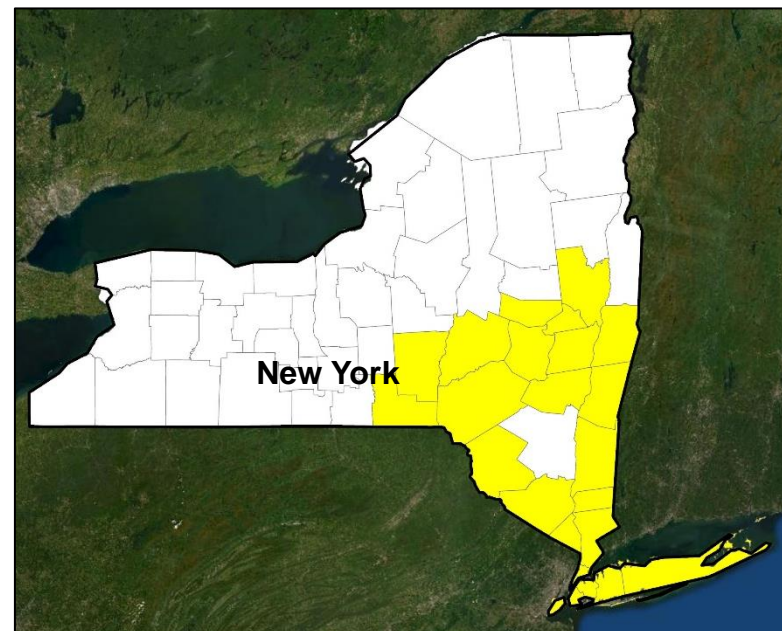
**Date Approved:** Aug 22

**Incident:** Hurricane Henri

**Incident Period:** August 21, 2021 and continuing

**Requested:**

- **PA:** Debris removal and emergency protective measures (Categories A and B), including direct federal assistance for 25 counties



■ PA



**FEMA**

# Declaration Requests in Process – 7

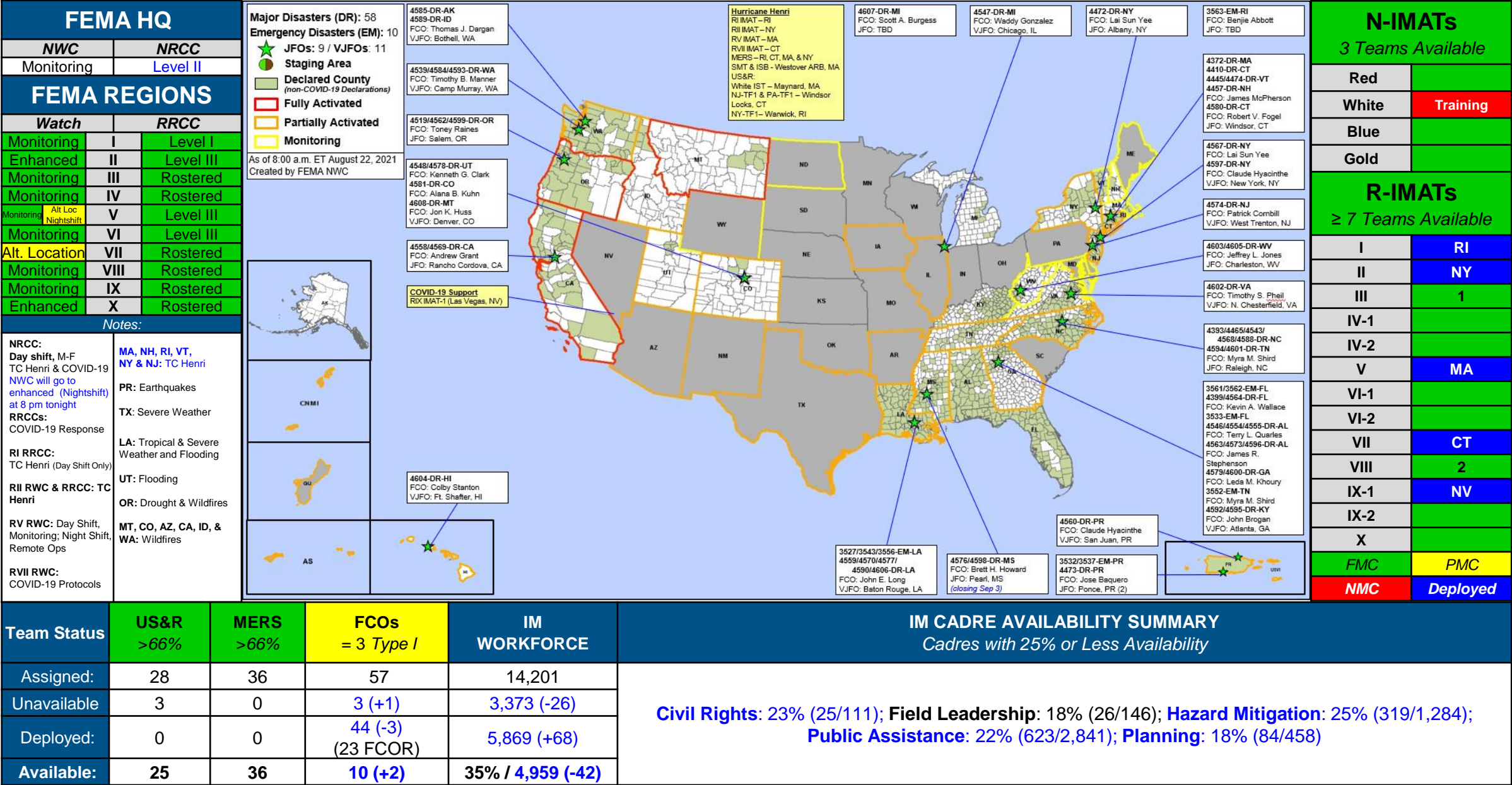
State / Tribe / Territory – Incident Description	Type	IA	PA	HM	Requested
Fort Peck Assiniboine & Sioux Tribes – Severe Storm, Straight-line Winds, and Flooding	DR	X		X	Aug 3
ND – Severe Storms, Straight-line Winds, and Flooding	DR		X	X	Aug 9
MO – Severe Storms, Straight-line Winds, and Flooding	DR		X	X	Aug 13
NE – Severe Storms and Straight-line Winds	DR		X	X	Aug 18
KY – Severe Storm and Flooding	DR	X		X	Aug 19
RI – Tropical Storm Henri - Approved	EM		X		Aug 20
CT – Hurricane Henri - Approved	EM		X		Aug 20
NY – Hurricane Henri - Approved	EM		X		Aug 21



FEMA



# FEMA Common Operating Picture







# FEMA

Helping people before, during, and after disasters.



*Scan to subscribe to this briefing.*