

FEMA National Watch Center

Daily Operations Briefing

Monday, August 30, 2021

8:30 a.m. ET



FEMA

National Current Ops / Monitoring

New Significant Incidents / Ongoing Ops

- Tropical Storm Ida
- Wildfire Activity – Western U.S

Hazard Monitoring

- Excessive Rainfall – Northern/Central Plains and Mississippi Valley
- Severe Thunderstorms – SD, NE, and MS
- Tropical Activity
 - Atlantic:
 - Tropical Storm Ida
 - Tropical Depression Ten
 - Disturbance 1: High (80%); Disturbance 2: Low (20%);
 - Eastern Pacific: Remnants of Nora

Disaster Declaration Activity

- Approval: Major Disaster Declaration – LA

Event Monitoring

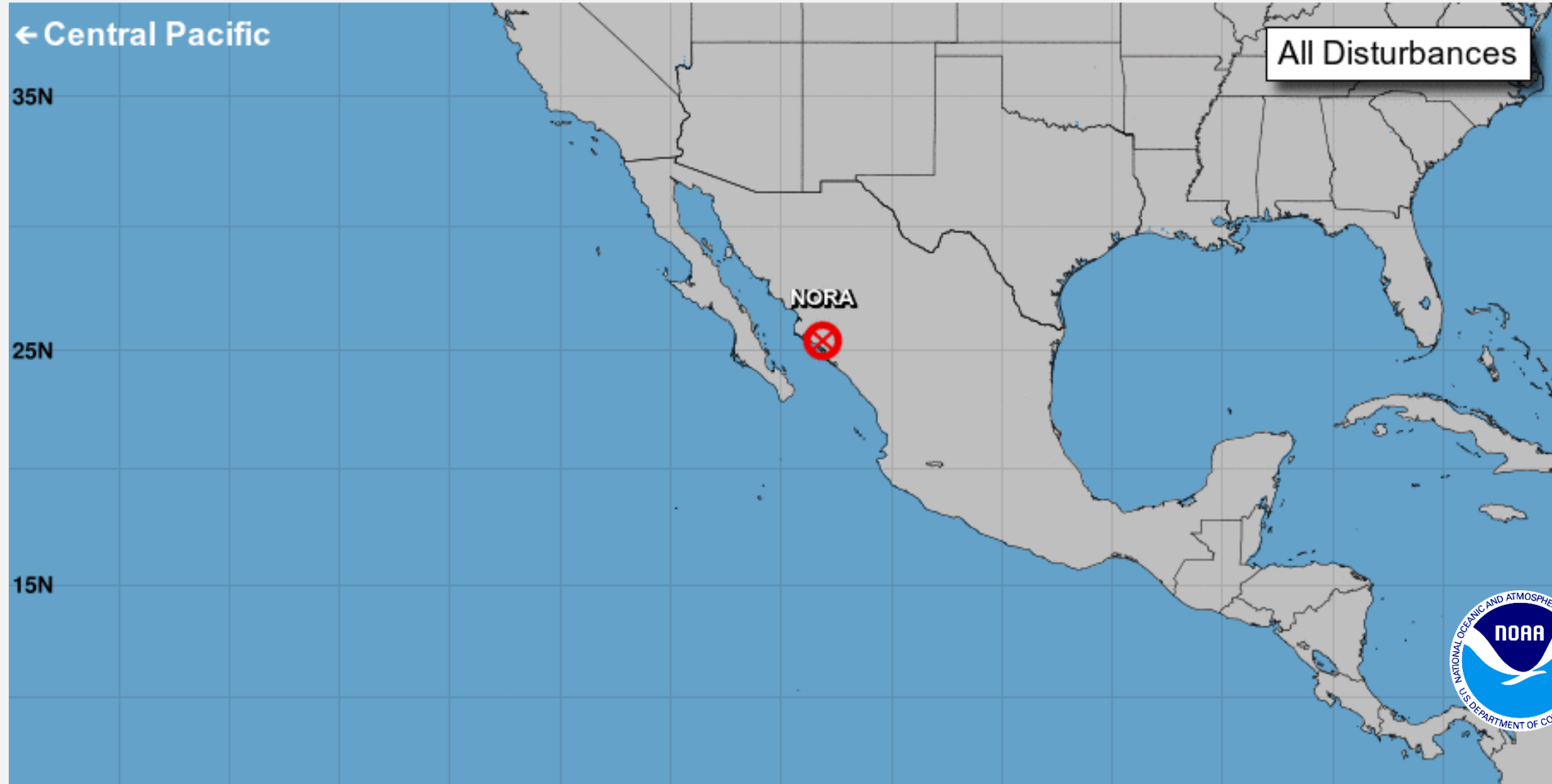
- None



FEMA

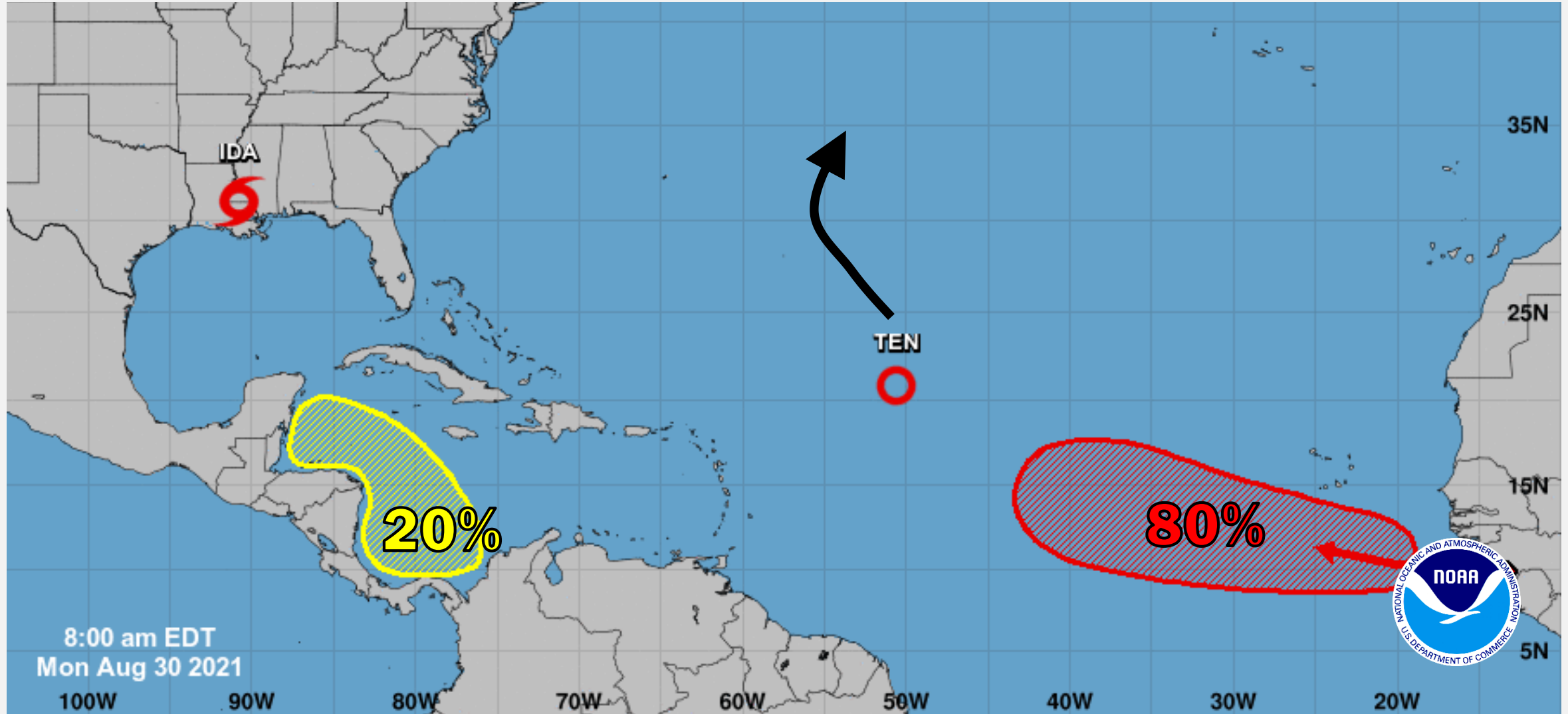
East Pacific Overview

TROPICAL OUTLOOK



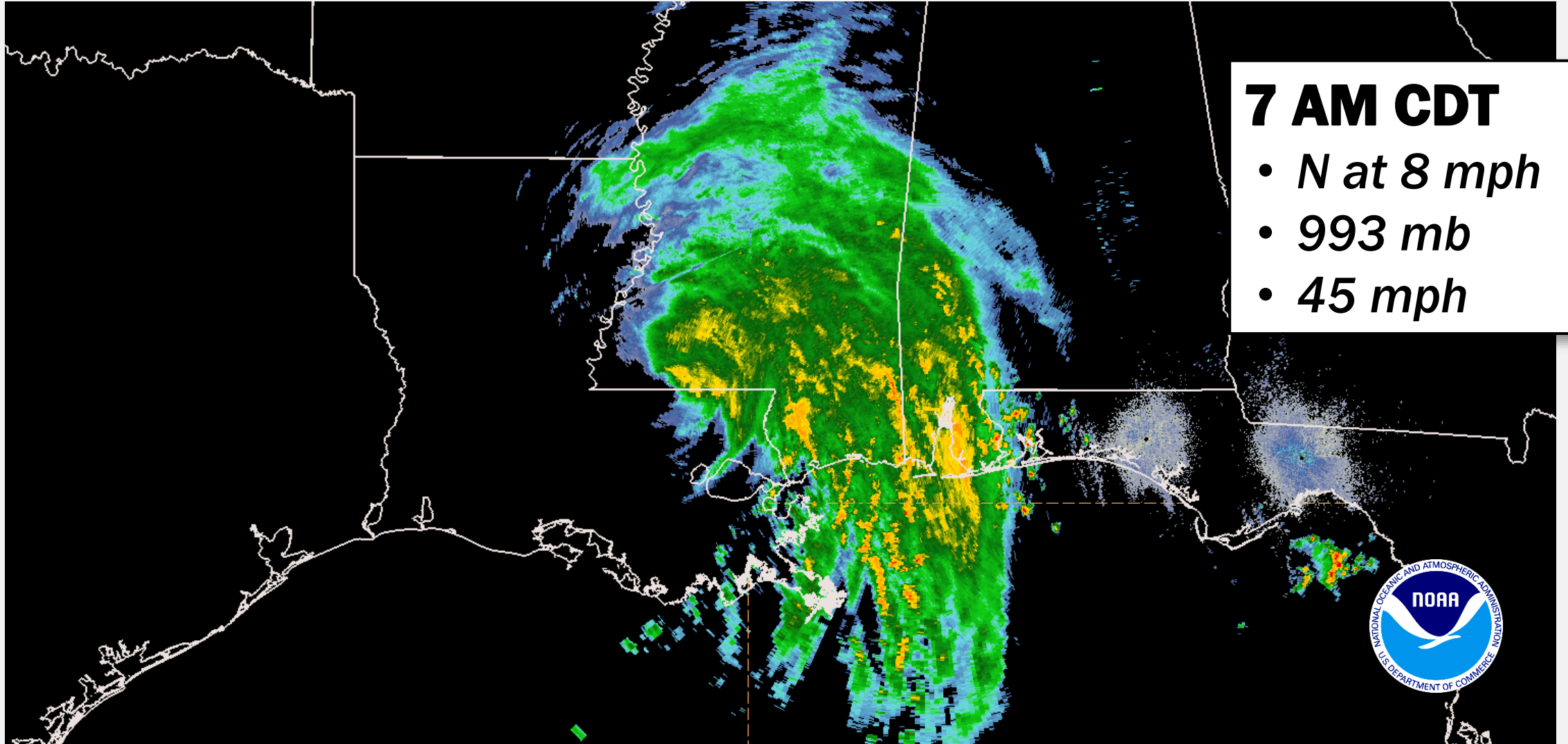
Atlantic Overview

TROPICAL OUTLOOK



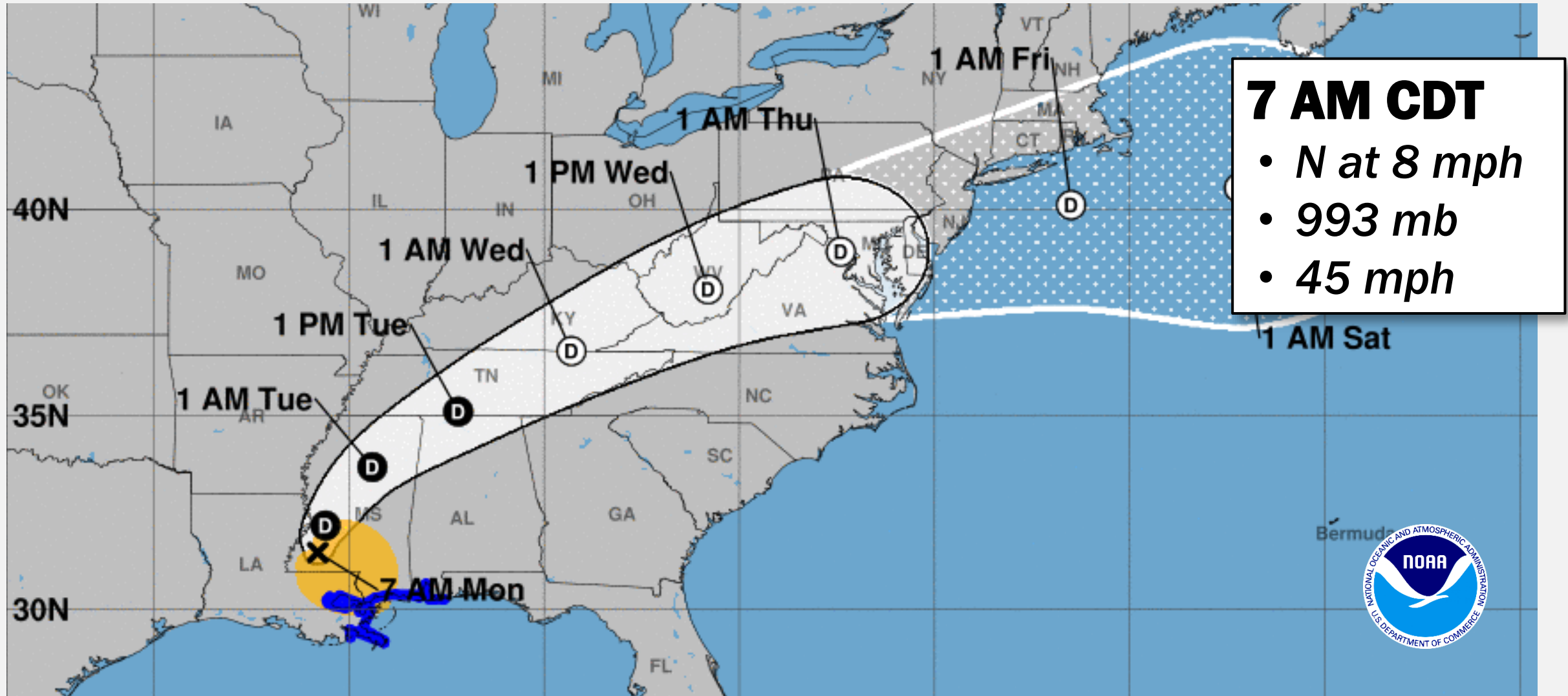
Tropical Storm Ida

SATELLITE LOOP



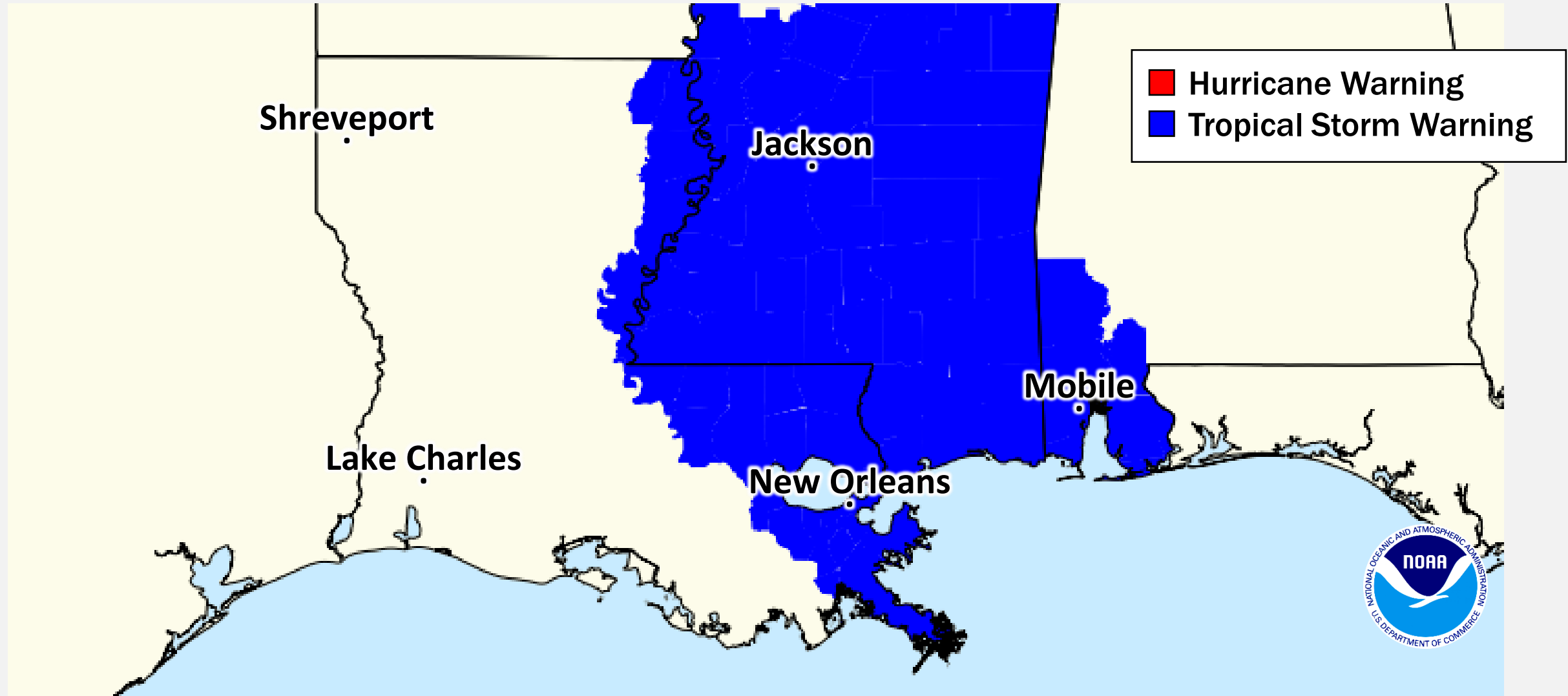
Tropical Storm Ida

FORECAST TRACK



Tropical Storm Ida

WIND WATCHES AND WARNINGS



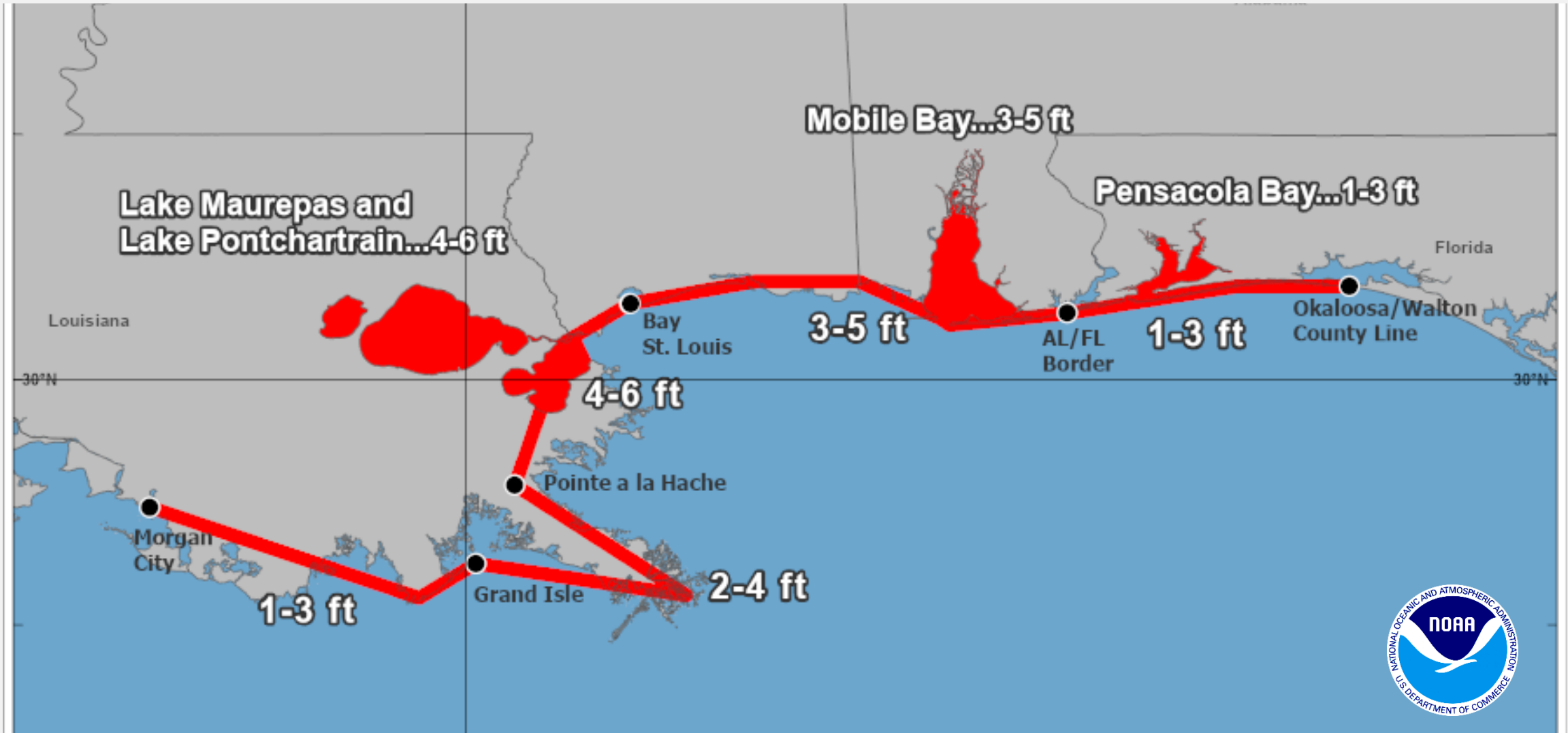
Tropical Storm Ida

STORM SURGE WARNING



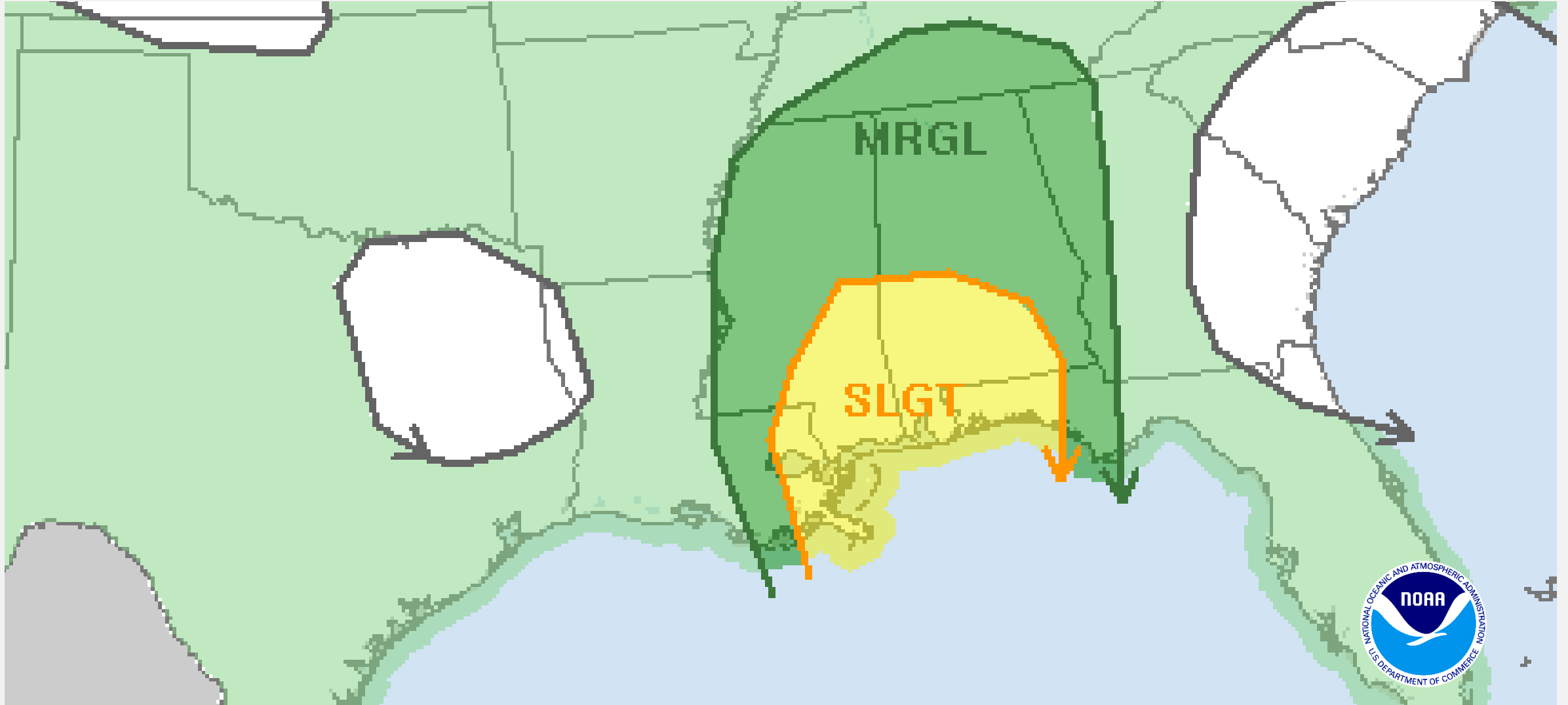
Tropical Storm Ida

PEAK STORM SURGE FORECAST



Tropical Storm Ida

DAY 1 CONVECTIVE OUTLOOK



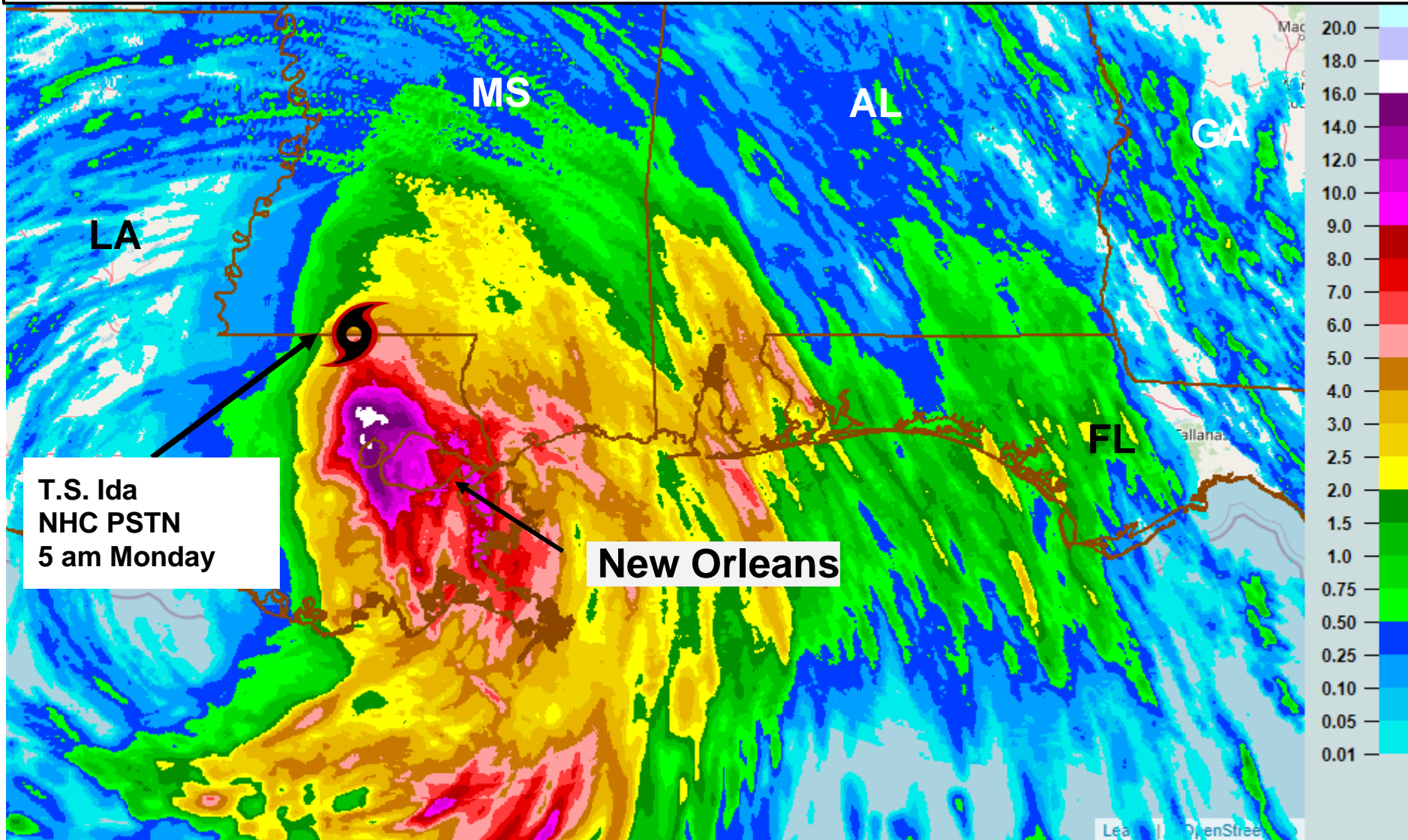
NWS Weather Prediction Center

Updated 6:00 am EDT, Monday, August 30, 2021



FEMA

Estimated Rainfall Past 24-hours Ending 5am EDT, Monday Aug. 30, 2021

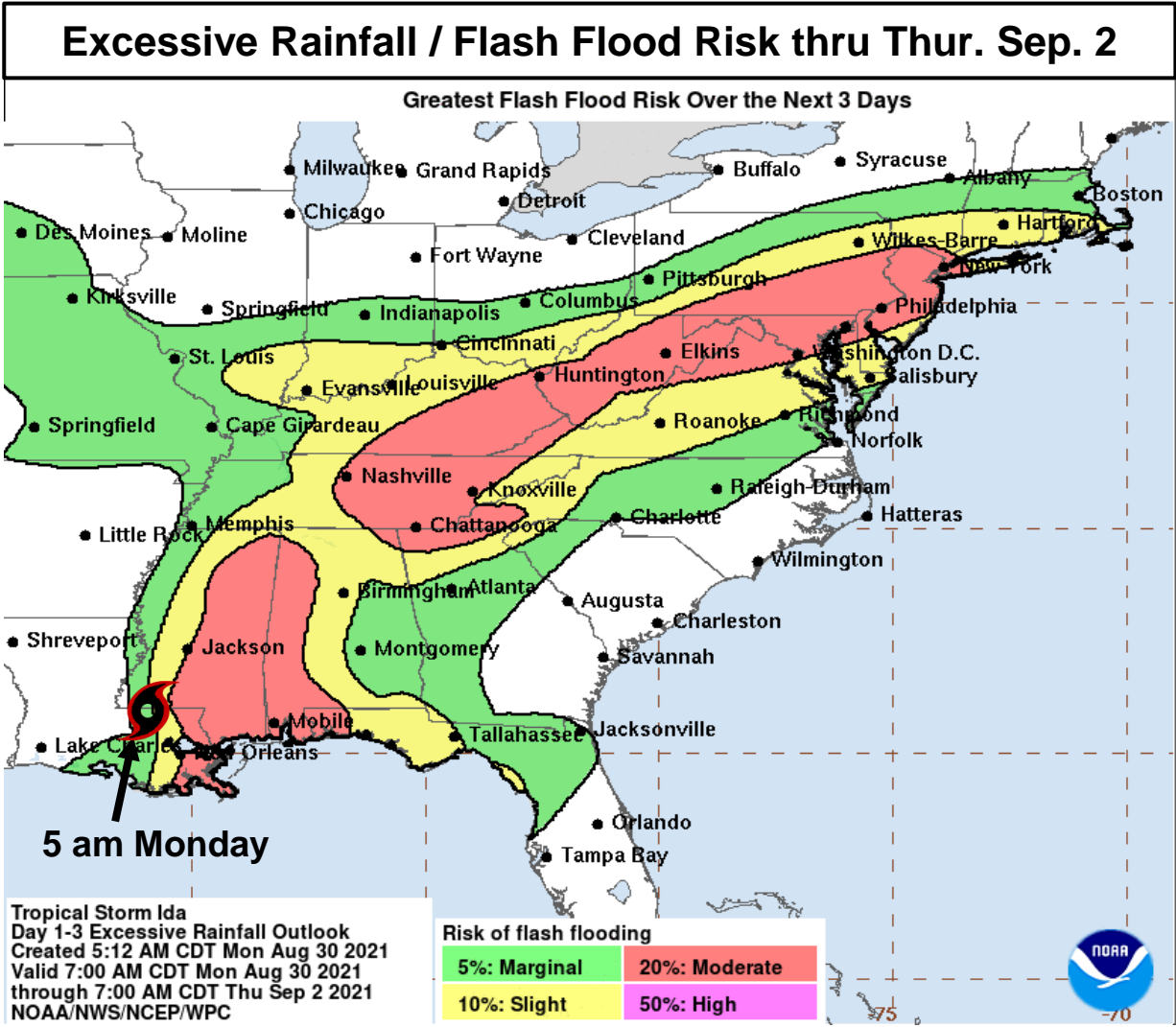
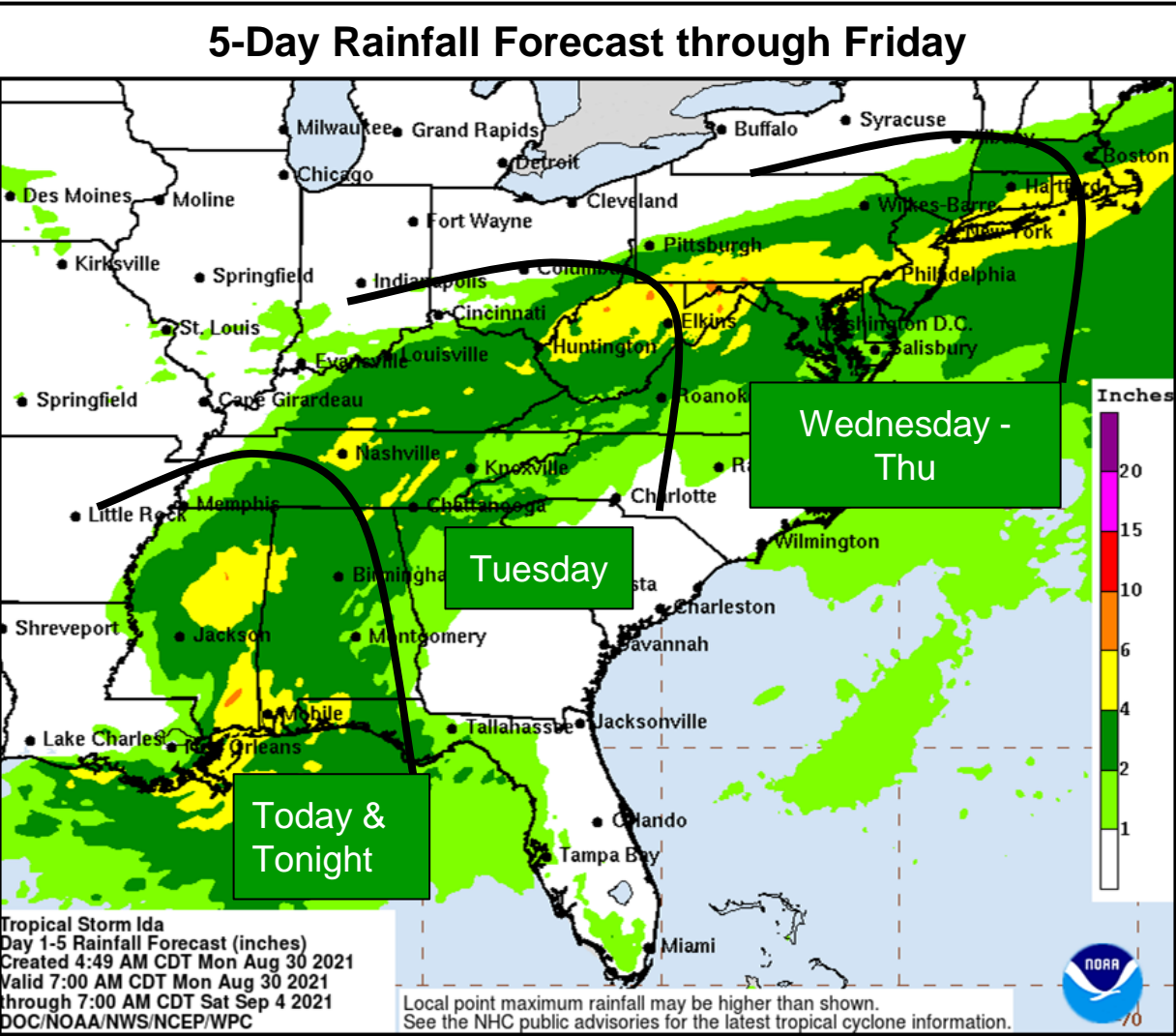


So far, heaviest rainfall with Ida occurred across southeast LA with observed rainfall totals of 5" to 10" with isolated 15"+ inch amounts.

Some rainfall totals include:

Gulf Port, MS: 5.36"
New Orleans: Station out
Baton Rouge: Station out
Mobile, AL: 3.05"
Slidell, LA: 8.31"

Updated 6:00 am EDT, Monday, August 30, 2021

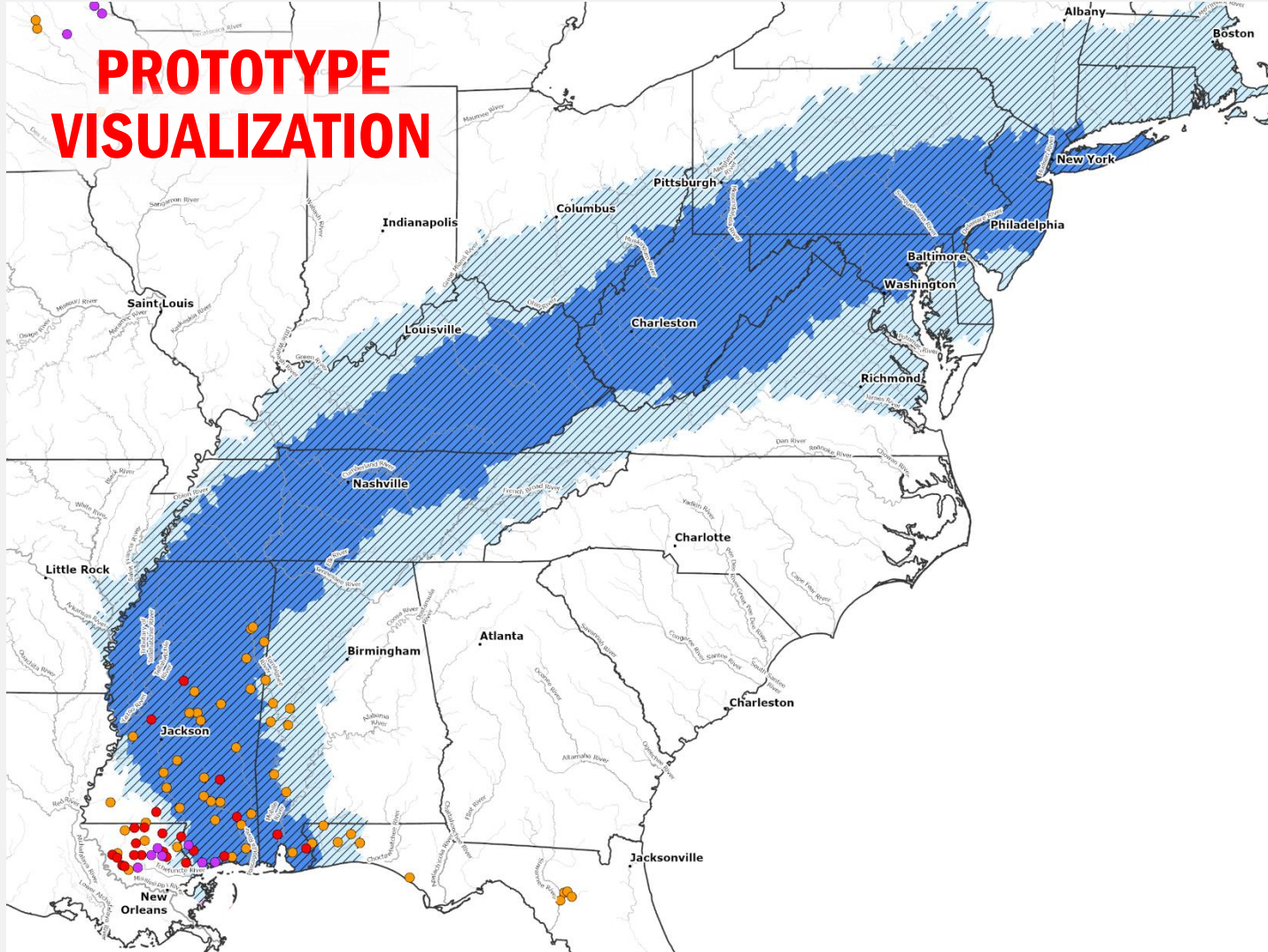


Through Tuesday morning, Ida will produce **additional rainfall of 4 to 8”** across portions of **southeast Louisiana, Mississippi and coastal Alabama**. Heavy rain will then spread across TN/OH Valley and Mid-Atlantic thru Thur.

Moderate Risk along the track of **Ida**. A Moderate Risk correlates to numerous flash flood events, with significant events possible in these areas

Tropical Storm Ida

7-DAY FLOOD HAZARD OUTLOOK



Potential Flooding Impacts

Catastrophic

Considerable

Limited

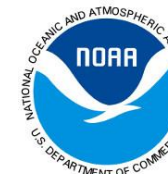
Timing



DAYS 1-3



DAYS 4-7



Tropical Storm Ida

Lifeline Impacts:

- Safety and Security: Search and Rescue teams staged; no shortfalls reported
 - MS: 3 rivers at major flood stage
 - LA: 2 levees overtopped
- Food, Water, Shelter: Logistics support staged; no shortfalls reported
- Health and Medical: 168 ambulances staged in LA
 - LA: 4 hospitals damaged; 39 facilities on generator power
- Energy: 184 generators staged
 - LA: 1M (47%) customers without power (Eagle-I, as of 8:00 a.m. ET)
 - MS: 113K (10%) customers without power (Eagle-I, as of 8:00 a.m. ET)
- Communications: FEMA communications assets deployed to support key resources
- Transportation: No unmet needs reported
- HAZMAT: No significant storm impacts, shortfalls, or limiting factors

State/Local Response:

- LA EOC at Full Activation (COVID and TC Ida); Governor declared State of Emergency
- MS EOC at Partial Activation (COVID-19 and TC Ida); Governor activated 2,500 National Guard
- AL EOC at Normal Operations, Governor declared a State of Emergency and requested a FEMA LNO
- WV Governor declared a State of Preparedness

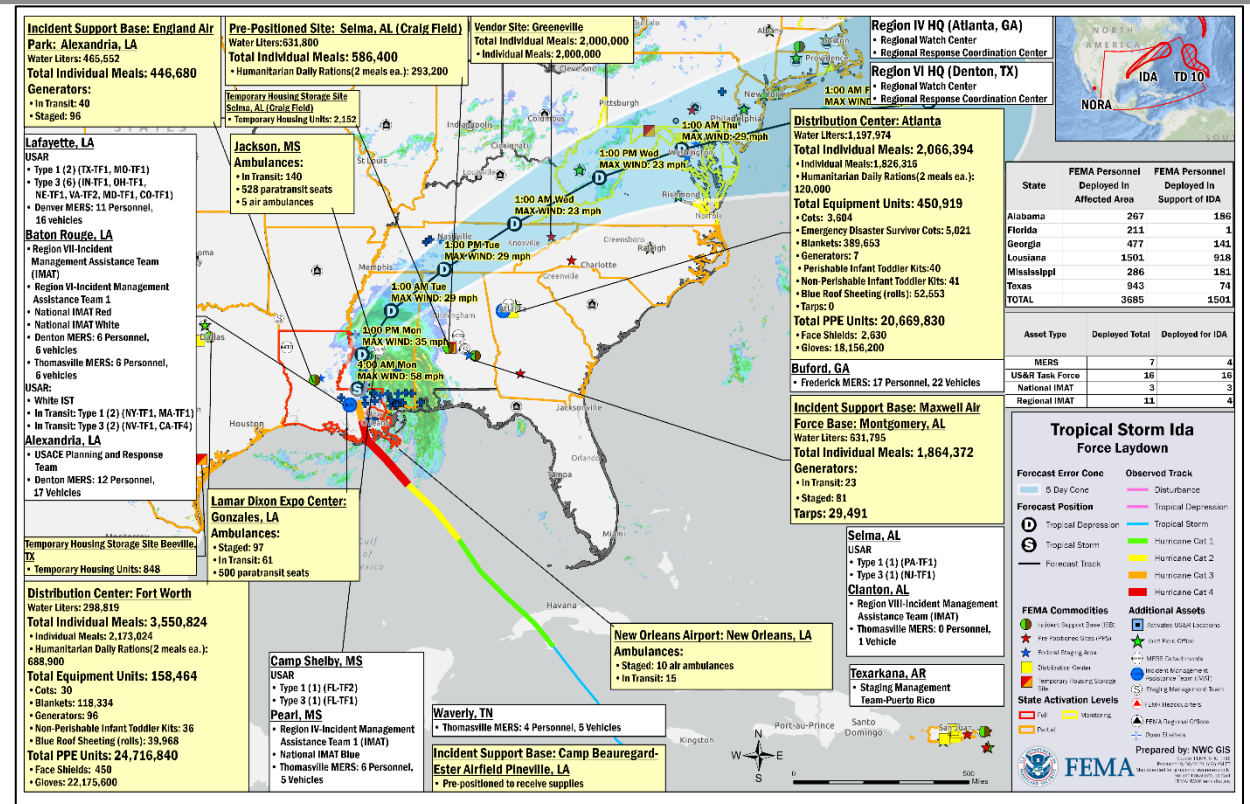
FEMA Regional Response:

Region VI:

- RWC at Enhanced Watch, 24/7
- RRCC at Level I, day shift, with all ESFs; 24/7
- IMAT-1 deployed to IOF in Baton Rouge, LA; IMAT-2 may move to Austin, TX; TRO will be used for IOF

Region IV:

- RRCC at Level II day shift, with all ESFs, DCE and USCG; 24/7
- IMAT-1 deployed to MS; IMAT-2 deployed to TN (flooding)



FEMA

National Watch Center

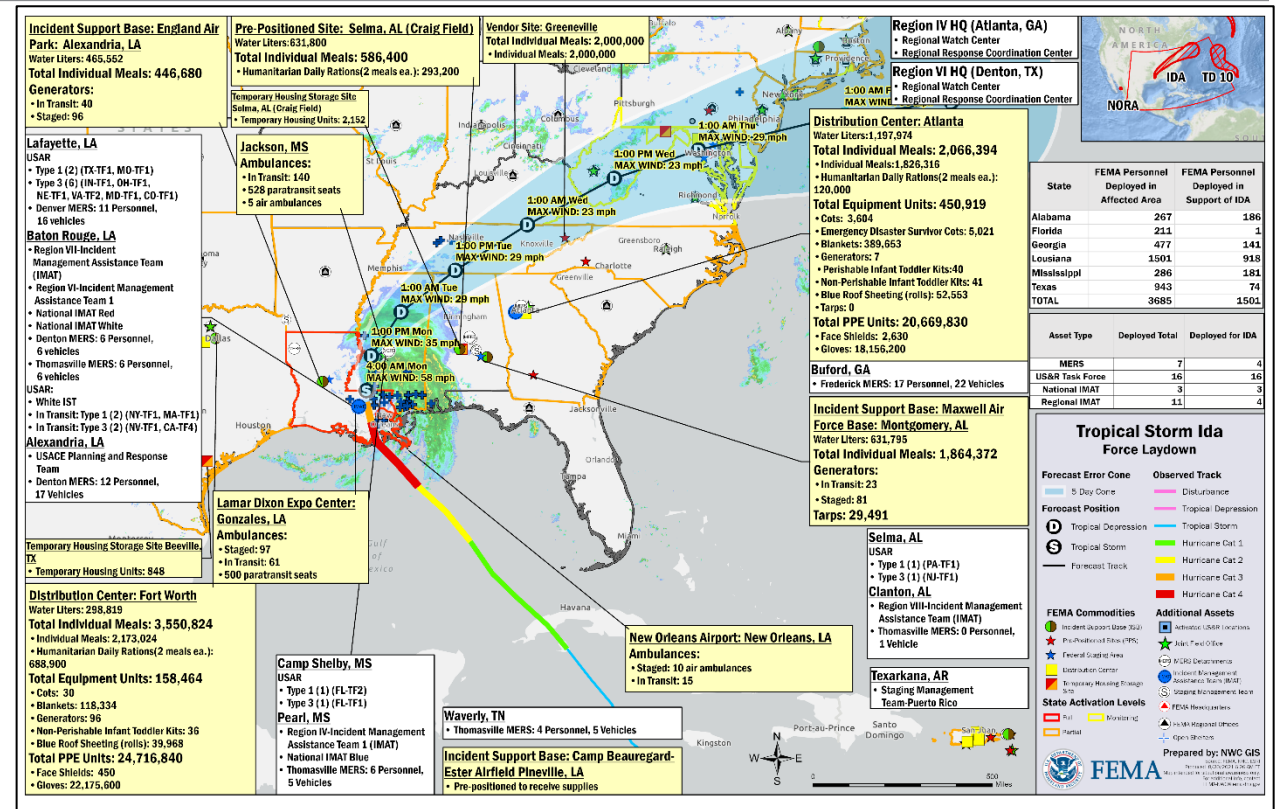


Tropical Storm Ida

FEMA / Federal Response:

FEMA HQ:

- NRCC at Level I, day shift with all ESFs and LNOs
- Emergency Declaration FEMA-3568-EM-LA approved Aug 27
- **Major Disaster Declaration FEMA-4611-DR-LA on Aug 29**
- Emergency Declaration FEMA-3569-EM-MS approved Aug 28
- National IMAT Red and White, and Region VII IMAT deployed to Baton Rouge, LA
- National IMAT Blue deployed to Pearl, MS
- Region VIII IMAT deployed to AL EOC
- US&R:
 - LNO's to N-IMAT Red and N-IMAT Blue
 - Region VI
 - Baton Rouge, LA: (1) White IST, (2) Type 1, and (2) Type-3 TF's
 - Lafayette, LA: (2) Type 1 and (6) Type 3 TF's staged
 - All teams have swift water capabilities
 - Region IV:
 - Camp Shelby, MS: (1) Type 1 and (1) Type 3 TF
 - Oxford, AL: (1) Type 1 and (1) Type 3 TF staged
 - All teams have swift water capabilities
- MERS:
 - Denton, Denver, Thomasville, and Frederick MERS to support Region VI or IV
 - 3 Mobile Communication Operations Vehicles (MCOVs) staged in Thomasville, GA; 5 staged in ISB Alexandria, LA



DOD: 60 high water vehicles staged in TX; 14 rotary wing aircraft staged in TX/VA

USCG: 27 rotary wing aircraft in AL and TX for SAR; 39 surface assets prepositioned for port assessment

USGS: Storm surge sensors deployed in LA and MS for water height monitoring

EPA: Light Incident Management Team established in Region VI



FEMA

Declaration Approved – Louisiana

Declaration Type: Major Disaster Declaration – FEMA-4611-DR

Date Requested: Aug 26

Date Approved: Aug 29

Incident: Hurricane Ida

Incident Period: Aug 26, 2021, and continuing

Provides:

- IA and PA for 25 parishes
- PA only for 39 parishes
- Hazard Mitigation: statewide

FCO: John E. Long



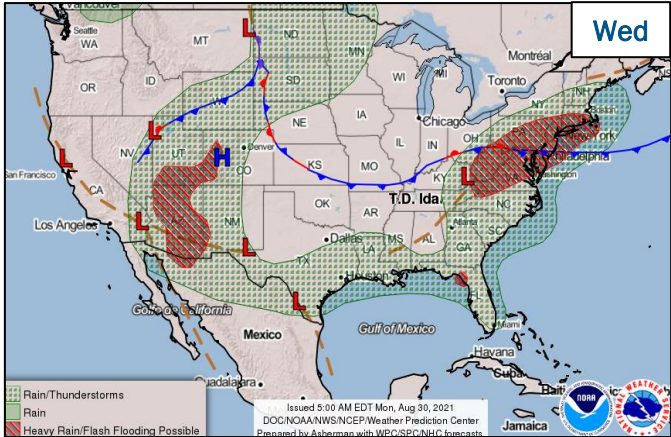
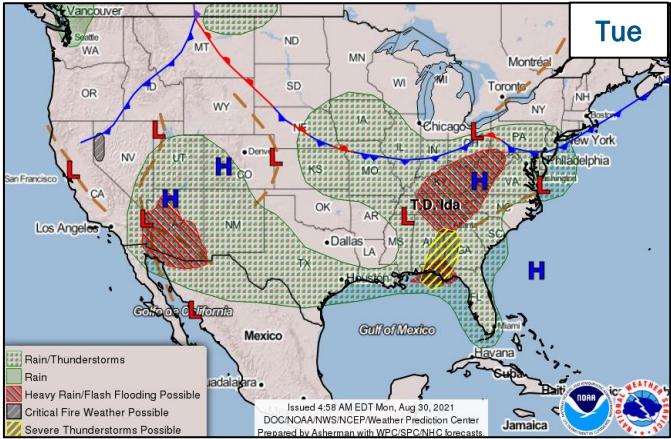
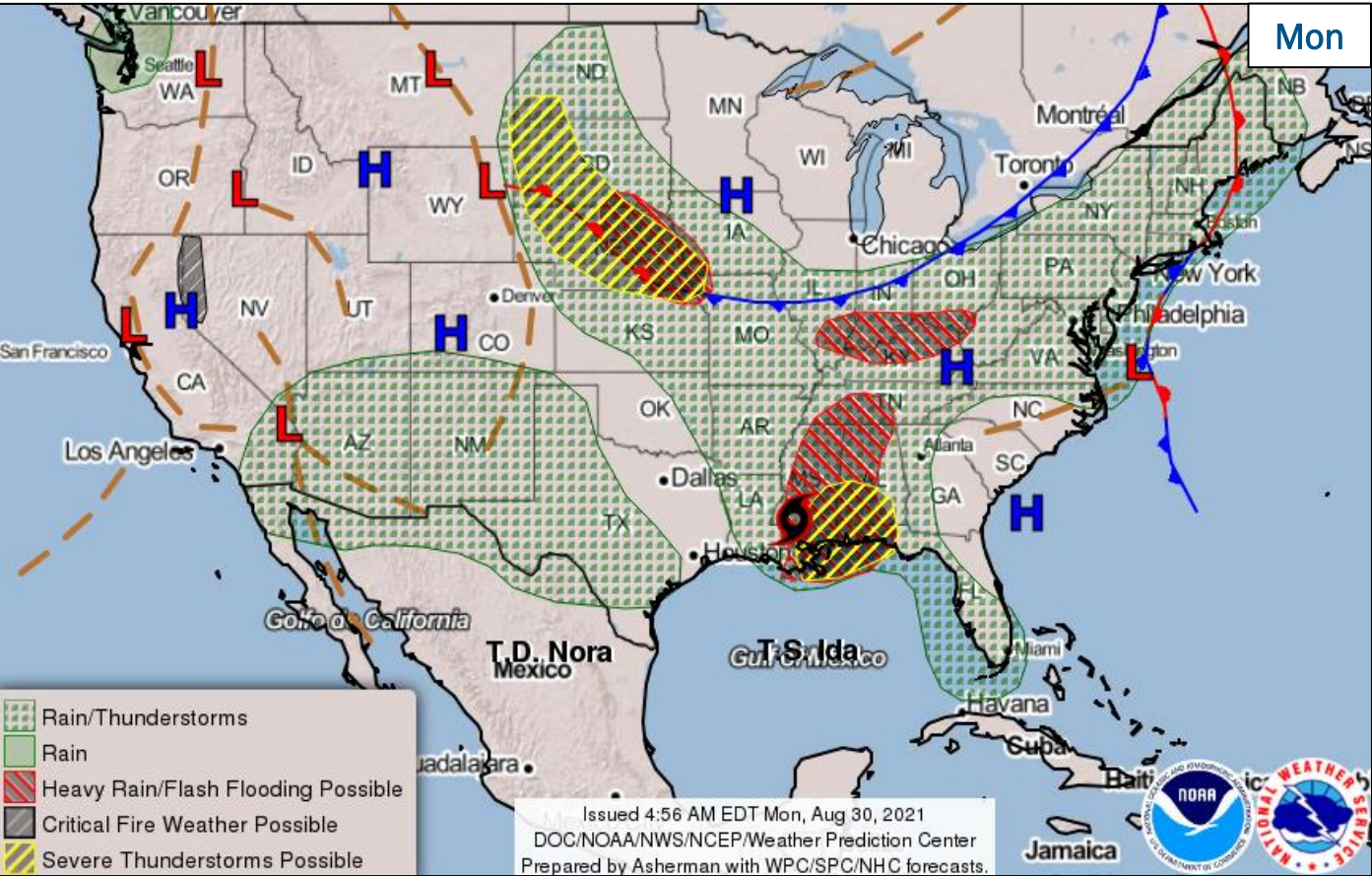
 PA  IA & PA



FEMA

National Watch Center

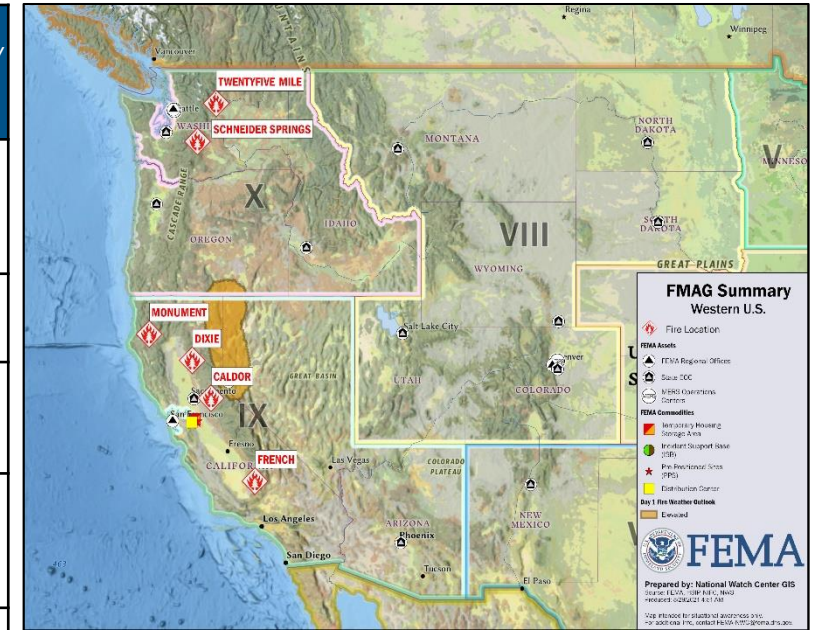
National Weather Forecast



FEMA

Wildfire Summary

Fire Name (County, ST)	FMAG #	Acres Burned	Percent Contained	Evacuations	Structures (Homes / Other)			Fatalities Injuries
					Threatened	Damaged	Destroyed	
Dixie (Plumas, CA)	5400-FM-CA	765,635 (+6,417)	48%	M: 2,605 (+25)	H: 11,448 (-354)	H: 56	H: 701 (+3)	0 / 6
				V: 0	O: 31	O: 36	O: 576 (+1)	
Monument (Trinity, CA)	5412-FM-CA	163,155 (+2,022)	29% (+6)	M: 2,000	H: 5,780	H: 3	H: 20	0 / 6
				V: 0	O: 4,800	O: 0	O: 30	
Caldor (El Dorado, CA)	5413-FM-CA	168,387 (+15,842)	13% (-6)	M: 40,013 (+5,700)	H: 20,931 (+3,104)	H: 25	H: 472 (+3)	0 / 3
				V: 0	O: 520	O: 14	O: 181	
French (Kern, CA)	5416-FM-CA	24,920 (+720)	26% (+4)	M: 869 (-2,535)	H: 2,094	H: 3 (+2)	H: 19 (+7)	0 / 37 (+26)
				V: 0	O: 2,957	O: 1 (-1)	O: 31 (+10)	
Twentyfive Mile (Chelan, WA)	5414-FM-WA	12,214 (+957)	28% (-4)	M: 1,028	H: 688	H: 0	H: 1	0 / 4 (+2)
				V: 0	O: 84	O: 0	O: 12	
Schneider Springs (Yakima, WA)	5415-FM-WA	76,764	8%	M: 240	H: 0	H: 0	H: 0	0 / 16 (+12)
				V: 0	O: 0	O: 0	O: 0	



FEMA

National Watch Center

Caldor Fire – California

Fire Name (County, ST)	FMAG #	Acres Burned	Percent Contained	Evacuations	Structures (Homes / Other)			Fatalities / Injuries
					Threatened	Damaged	Destroyed	
Caldor (El Dorado, CA)	5413-FM-CA	168,387 (+15,842)	13% (-6)	M: 40,013 (+5,700)	H: 20,931 (+3,104)	H: 25	H: 472 (+3)	0 / 3
				V: 0	O: 520	O: 14	O: 181	

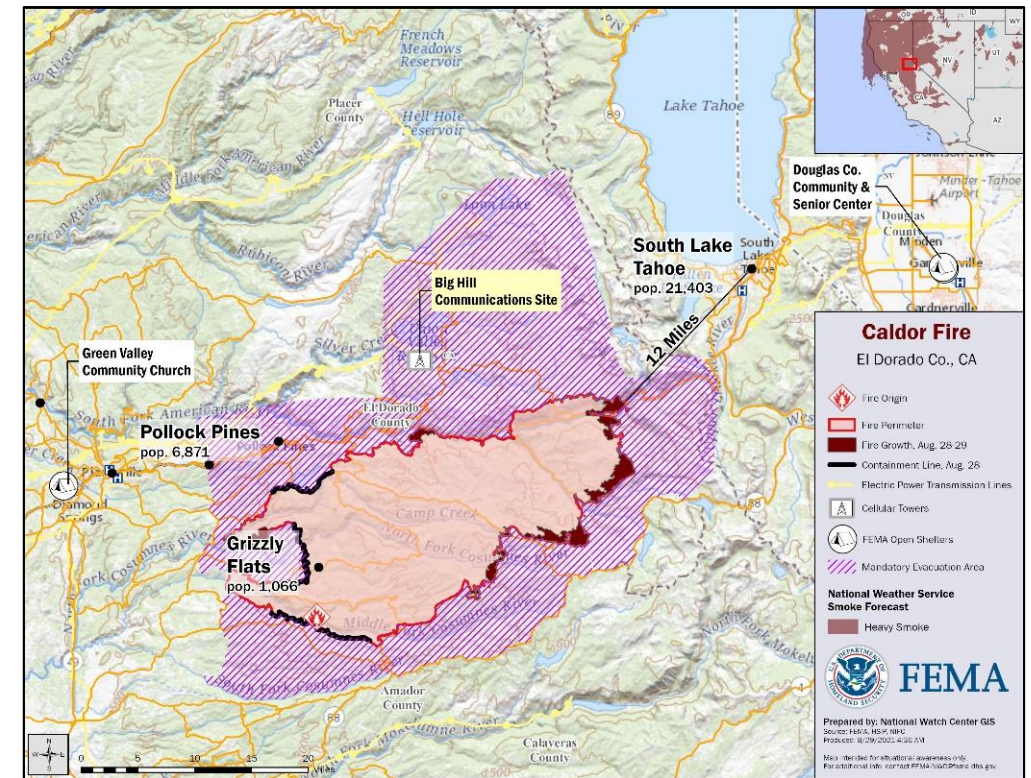
Situation: Fire behavior increased in the northeast and eastern sectors due to the expected southwest flow returning and poor humidity. The fire continues towards HWY 50 and produce ember cast that threatens the HWY control lines. Red Flag warnings are in effect through Tuesday evening. Looking ahead, growth is expected to continue in the northeast however, there should be minimal development in the southern and northern divisions

Impacts:

- Substantial critical utility infrastructure damage and destruction in the Grizzly Flats area
- PG&E distribution/transmission lines, distribution substations, telecom towers, and fiber optic resources threatened
 - Provides power to thousands of customers in El Dorado/surrounding areas; value of assets estimated to be \$11M
 - Approximately 3k (2.5% of county) customers without power (*DOE Eagle-I, 5:30 a.m. ET, Aug 30*)
- Grizzly Flats water storage/distribution infrastructure threatened; 1.2k customers potentially impacted
- HWY 50 closed from Sly Park to the Hwy 50/Hwy 89 junction; HWY 50 is a major Trans-Sierra HWY vital to emergency evacuation (*ICS-209, 8:45 p.m. ET, Aug 29*)
- USDA Forest Service, Pacific Southwest Region, closed 9 national forests through Sep 6

Response:

- Total personnel assigned: 3,302 (*ICS-209 as of 9:00 a.m. ET, Aug 28*)
- 60% of perimeter inspected; damage inspections in progress (*ICS-209, 9:00 p.m. ET, Aug 27*)
- Anticipated containment date: September 8 (*ICS-209 as of 9:00 p.m. ET, Aug 27*)
- Firefighting air tankers throughout state are flying suppression missions
- 21 shelters / 528 (+36) occupants statewide due to wildfires (*ARC Midnight Shelter Count, 7:01 a.m. ET*)
- Region IX IMAT-2 and LNO deployed to CA EOC in Sacramento



FEMA

National Watch Center

Joint Preliminary Damage Assessments

Region	State / Location	Incidents	IA	Number of Counties		Start – End
			PA	Requested	Complete	
I	NH	Severe Storms and Flooding Jul 29-30	IA	0	0	N/A
			PA	2	0	TBD – TBD
		Severe Storms and Flooding Jul 17-19	IA	0	0	N/A
			PA	3	1	8/4 – TBD
	MA	Severe Storms and Flooding Jul 16-21	IA	0	0	N/A
			PA	5	0	8/10 – TBD
II	NY	Tropical Storm Fred Aug 19	IA	1	0	8/31 – TBD
			PA	0	0	N/A
IV	NC	Severe Weather Aug 16	IA	3	0	8/25 – TBD
			PA	7	0	8/25 – TBD
V	Red Lake Nation	Tornado Jul 26	IA	1	0	8/30 – TBD
			PA	1	0	8/30 – TBD
VIII	UT	Flooding Jul 15–Aug 19	IA	7	0	8/24 – TBD
			PA	7	0	8/24 – TBD
	MT	Richard Spring Wildfire Jun 15 and continuing	IA	0	0	9/7 – TBD
			PA	3	0	9/7 – TBD
X	OR	Bootleg Fire Jul 6	IA	2	0	9/7 – TBD
			PA	0	0	N/A



FEMA

National Watch Center

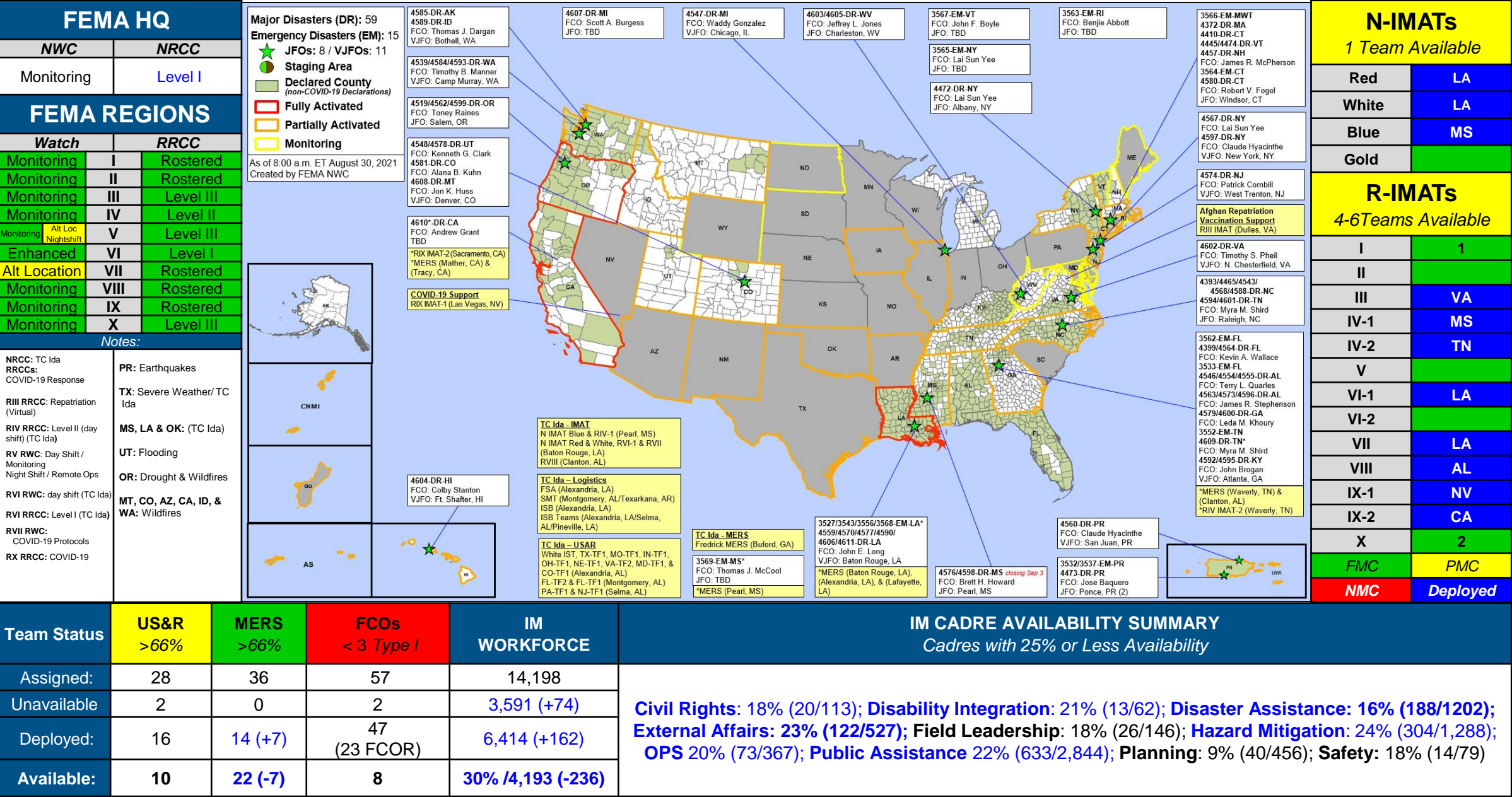
Declaration Requests in Process – 6

State / Tribe / Territory – Incident Description	Type	IA	PA	HM	Requested
Fort Peck Assiniboiné & Sioux Tribes – Severe Storm, Straight-line Winds, and Flooding	DR	X		X	Aug 3
ND – Severe Storms, Straight-line Winds, and Flooding	DR		X	X	Aug 9
MO – Severe Storms, Straight-line Winds, and Flooding	DR		X	X	Aug 13
NE – Severe Storms and Straight-line Winds	DR		X	X	Aug 18
KY – Severe Storm and Flooding	DR	X		X	Aug 19
NC – Tropical Storm Fred	DR	X	X	X	Aug 27
LA – Hurricane Ida – Approved	DR	X	X	X	Aug 29



FEMA

FEMA Common Operating Picture





FEMA

Helping people before, during, and after disasters.



Scan to subscribe to this briefing.