

FEMA National Watch Center

# Daily Operations Briefing

Friday, September 17, 2021

8:30 a.m. ET



**FEMA**

# National Current Ops / Monitoring

---

## New Significant Incidents / Ongoing Ops

- Wildfire Activity – Western U.S.
- Invest 95L (Disturbance 1)

## Hazard Monitoring

- Heavy rain and flash flooding possible – Lower Mississippi Valley and Southeast
- Tropical Activity:
  - Atlantic:
    - Disturbance 1: High (70%)
    - Disturbance 2: High (70%)
    - Disturbance 3: Low (20%)

## Disaster Declaration Activity

- None

## Event Monitoring

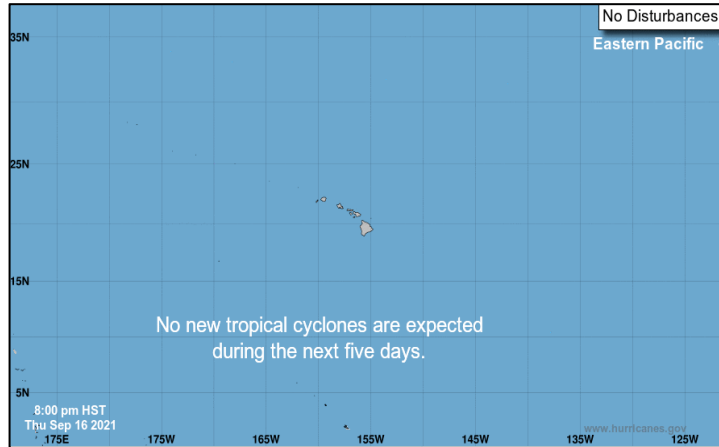
- United Nations General Assembly



**FEMA**

# Tropical Outlook – Five Day

## Central Pacific



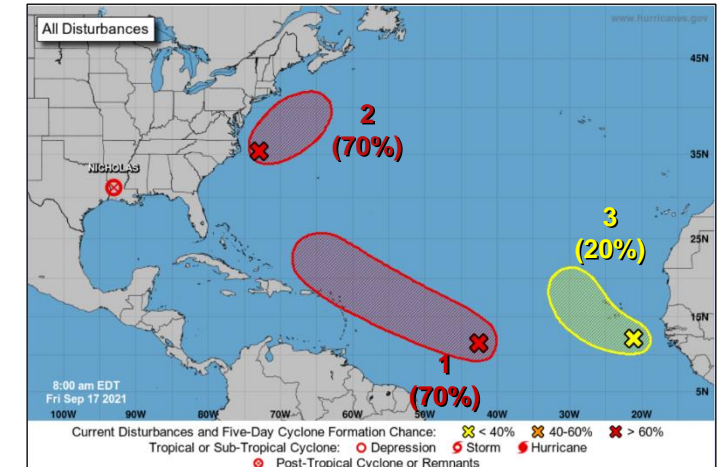
- No new tropical cyclones expected during the next five days

## Eastern Pacific



- No new tropical cyclones expected during the next five days

## Atlantic



### Disturbance 1 (as of 8:00 a.m. ET)

- Located midway between the Lesser Antilles and Cabo Verde Islands
- Tropical depression is likely to form over the weekend or early next week
- Formation chance: 48 hours: Medium (60%); 5 days: High (70%)

### Disturbance 2 (as of 8:00 a.m. ET)

- 150 miles E of the Cape Hatteras, NC
- Likely to become a short-lived tropical depression or tropical storm
- Formation chance: 48 hours: High (70%); 5 days: High (70%)

### Disturbance 3 (as of 8:00 a.m. ET)

- Located over the far eastern tropical Atlantic
- Formation chance: 48 hours: Low (10%); 5 days: Low (20%)



FEMA

National Watch Center

# Invest 95L- FEMA Preparations

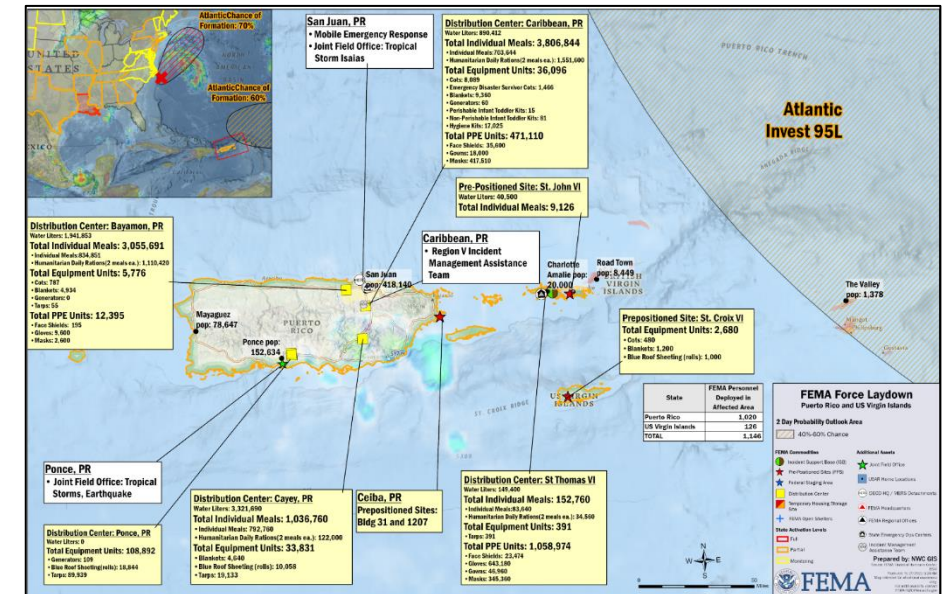
**Situation:** The National Hurricane Center has forecast a high likelihood for the development of a tropical cyclone near the Caribbean which may impact USVI or PR. The system is expected to move west to west-northwest at 15-20 mph across the tropical Atlantic during the next several days.

### FEMA Region II Preparations:

- RRCC at Level III, day shift, with select ESFs, and DCE
- Deploying to USVI: IMAT A, IMAT B, DEC, LNOS, USVI Light Force Package, ESFs 3, 8, 12, 14, and DCE to be in place by Sep 19
- Deploying to PR: PR Light Force Package, DEC, LNOS, ESFs 2, 3, 8, 12, 14, and DCE to be in place by Sep 19

**FEMA HQ:**

- NRCC at Level III (COVID); postured to support increased staffing, if required
- FEMA NWC coordinating reporting and awareness with Region II and NHC
- Region V IMAT deploying to DC Caribbean in Puerto Rico to be in place by Sep 19
- National IMAT Blue, National IMAT Gold, and two back-up Regional IMATs available
- SMT and ISB teams deploying to Puerto Rico to be in place by Sep 19
- Mobile Emergency Communications (MERS) are standing by



# FEMA

# 76<sup>th</sup> United Nations General Assembly

**Situation:** The 76th Session of the United Nations General Assembly (UNGA) will be held at UN Headquarters in New York, NY from Sep 14-30, 2021. The first day of the high-level General Debate will be on Tuesday, Sep 21, 2021.

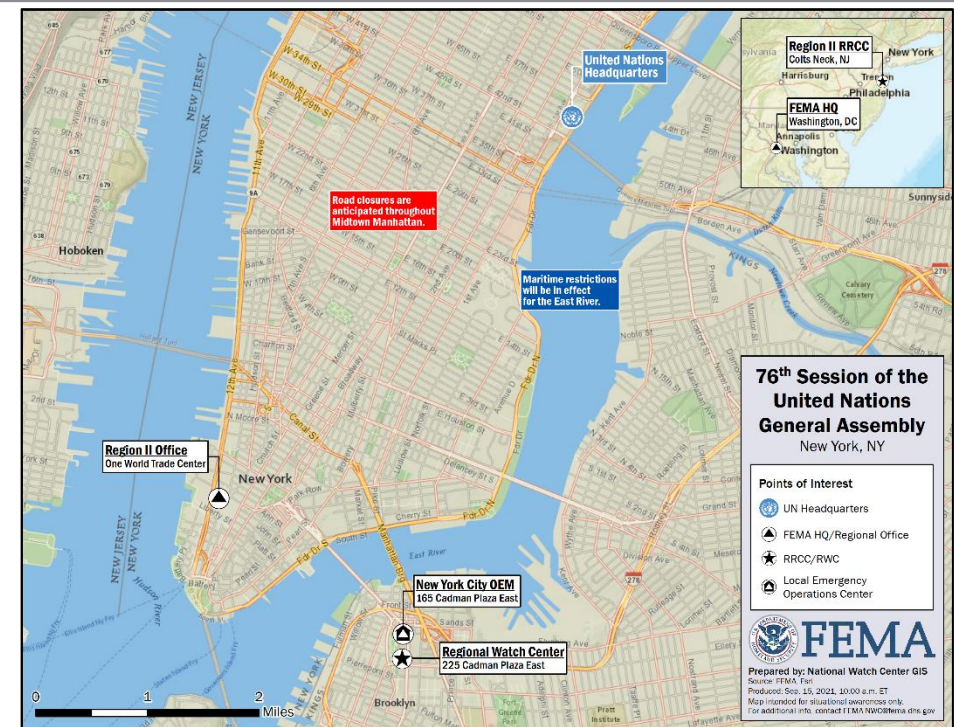
- Sep 19-25 has been designated as an NSSE
- The event is largely virtual; however, 83 world leaders are expected to be physically present, with a total attendance of approximately 2,000

## **Preparations:**

- USSS lead Law Enforcement and Coordination Agency
- FBI is the lead Intelligence and Counterterrorism Agency
- NYPD is the lead for local law enforcement
- FAA will establish a 7 and 20 nautical mile Temporary Flight Restriction from 8:00 a.m. – 5:00 p.m. ET
- FEMA is lead for consequence management planning and coordination

## **FEMA Preparations:**

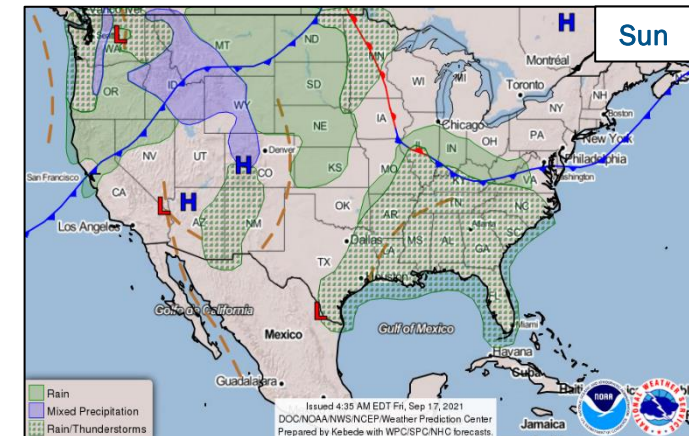
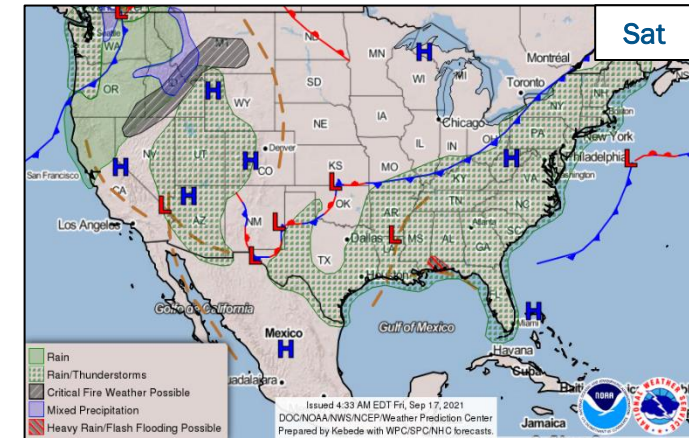
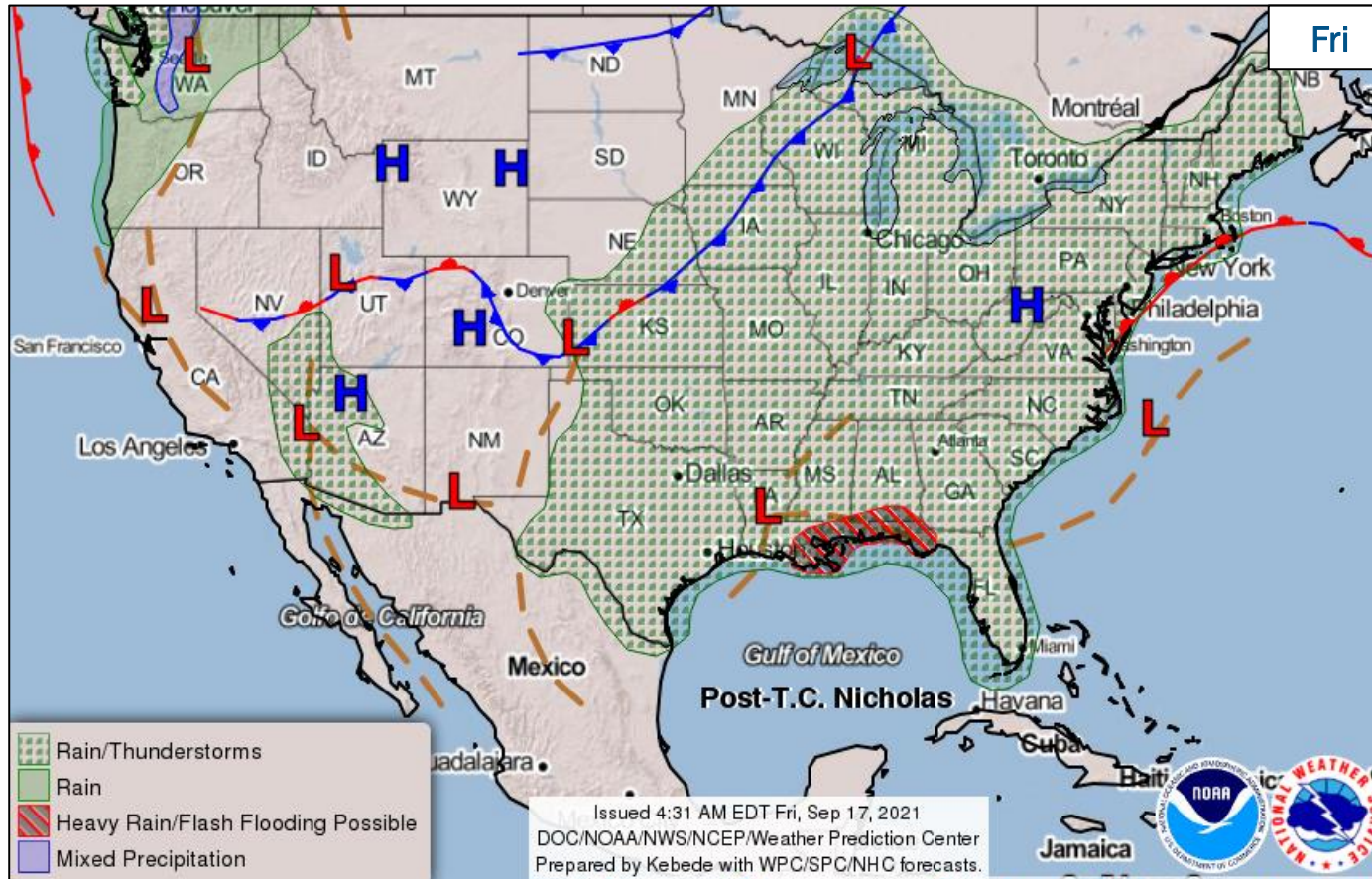
- NRCC activated for COVID-19; available to support
- NWC will activate to Enhanced Watch on Sep 19
- National IMAT Blue on alert
- US&R, CMCU, and DEST on alert
- DEC will provide communications and mobile command functions to Region II and other Federal agencies as directed
- Region II RWC will go to Enhanced Watch (day shift only) on Sep 19 for the duration of event
- Providing liaisons to several operations centers



**FEMA**



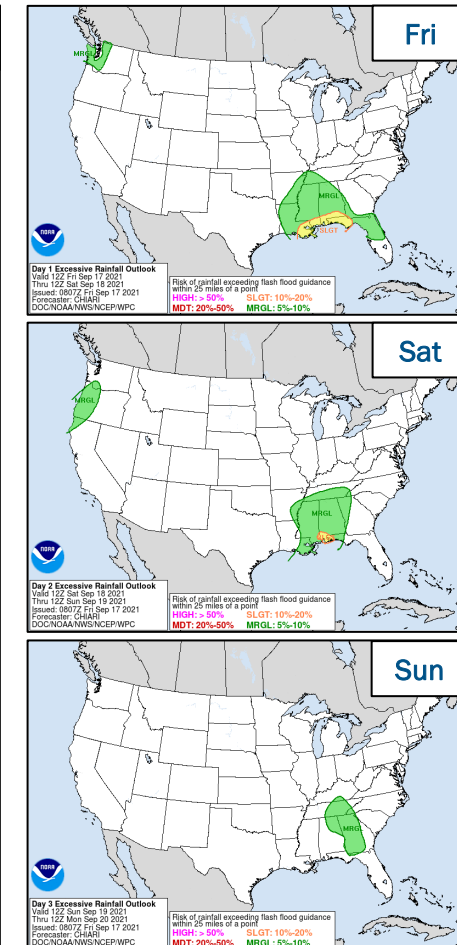
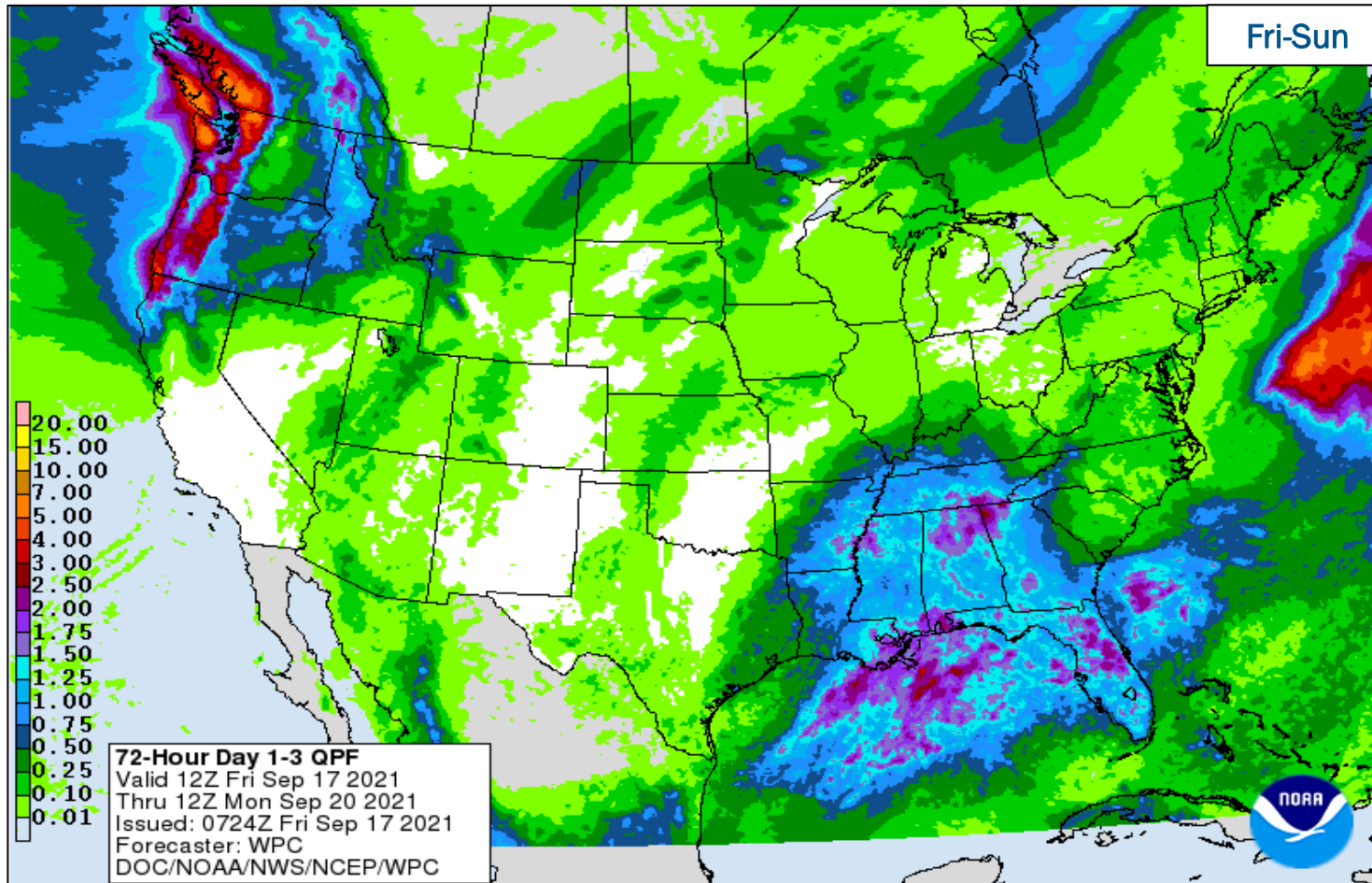
# National Weather Forecast



FEMA

National Watch Center

# Precipitation & Excessive Rainfall

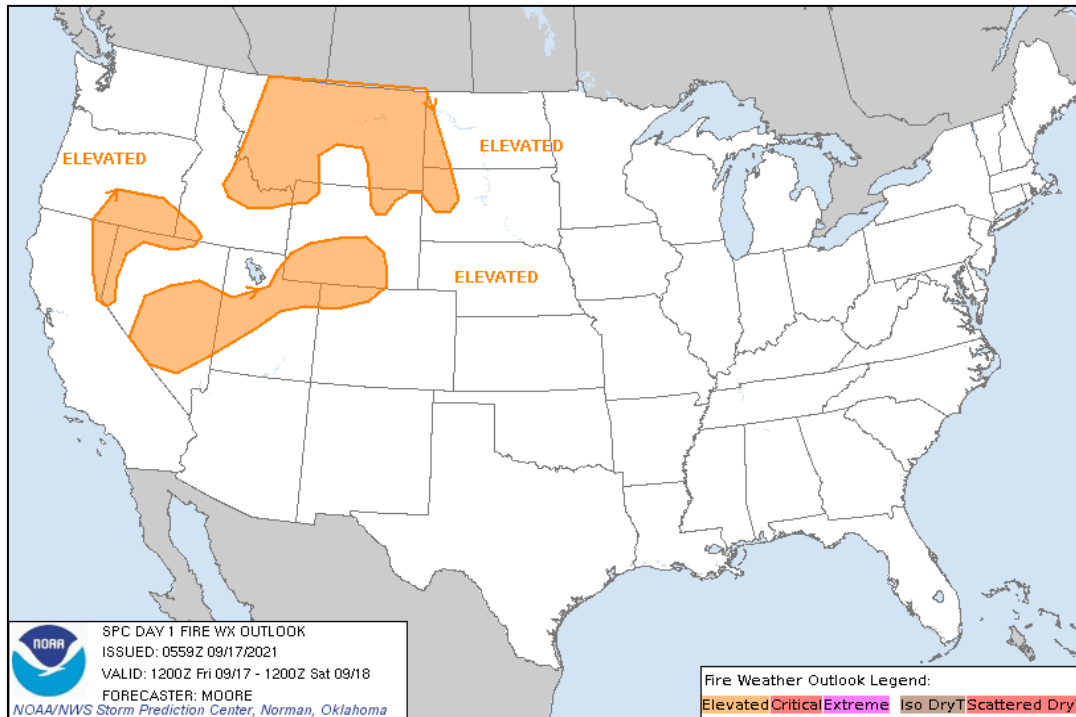


FEMA

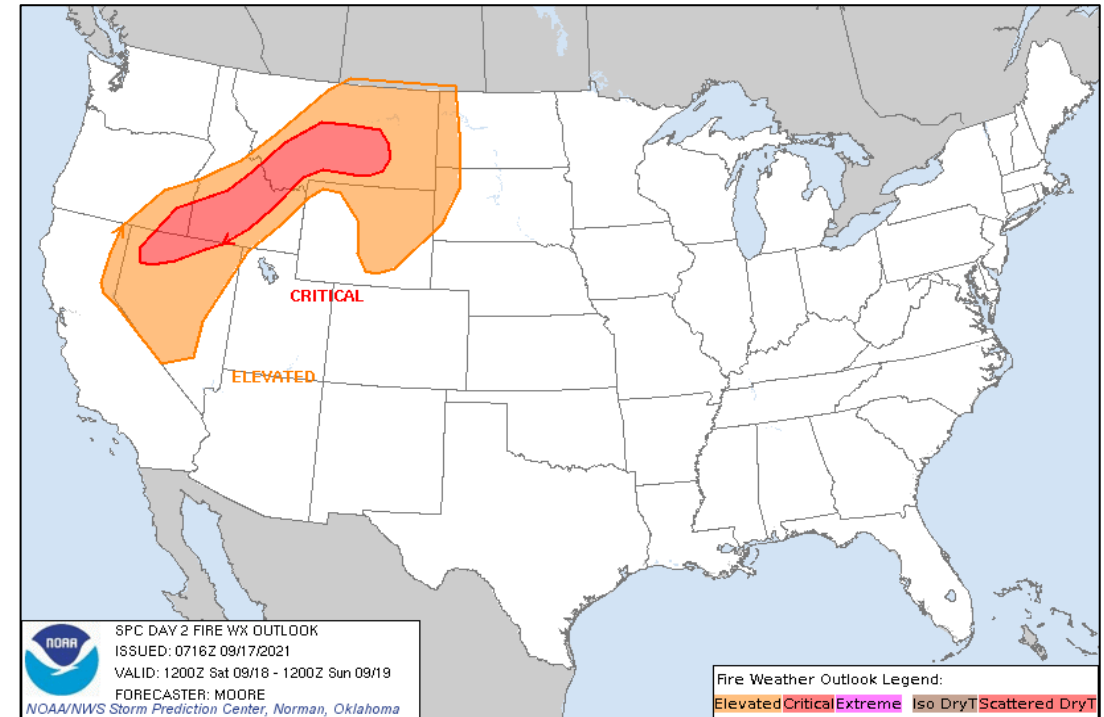
National Watch Center



# Fire Weather Outlook



Today



Tomorrow



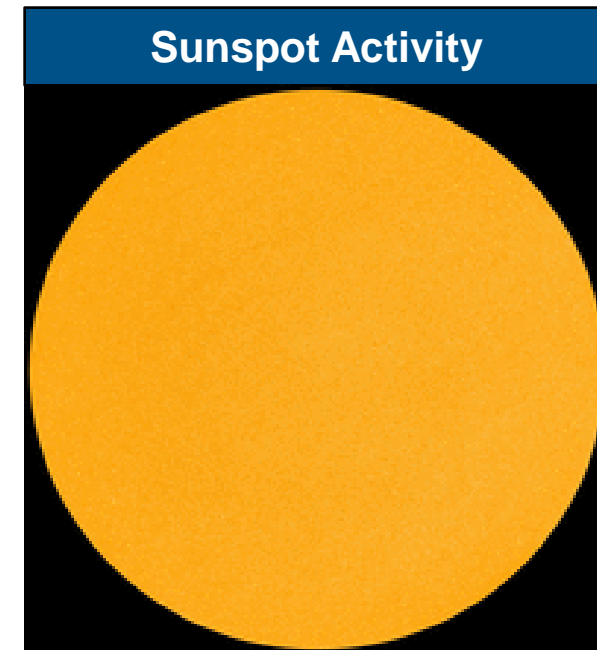
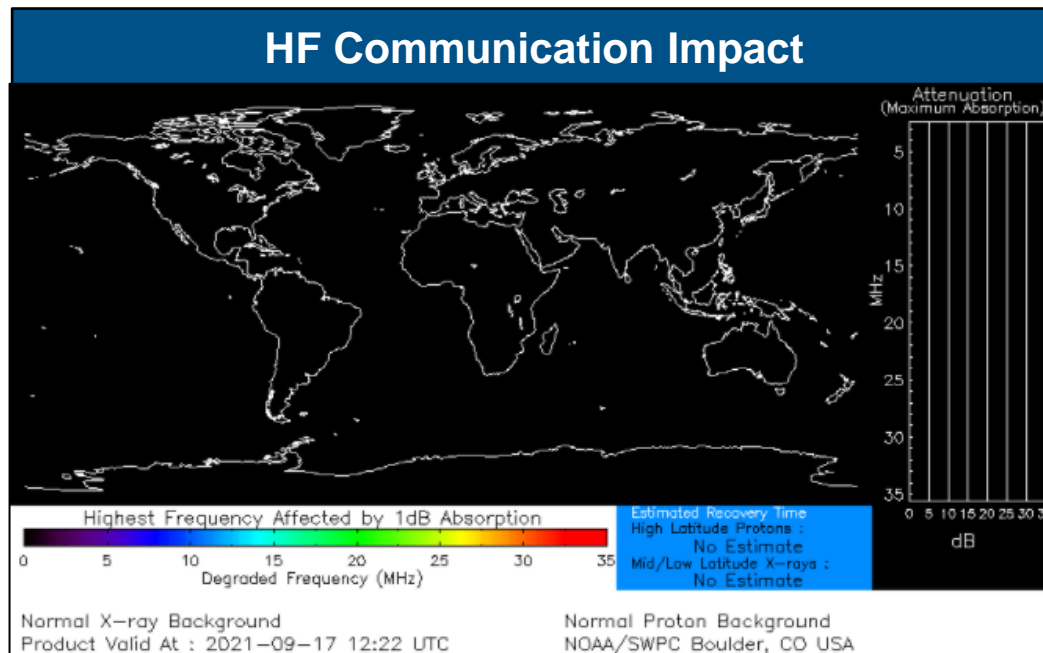
FEMA

National Watch Center



# Space Weather Outlook

	Space Weather Activity	Geomagnetic Storms	Solar Radiation	Radio Blackouts
Past 24 Hours	None	None	None	None
Next 24 Hours	None	None	None	None
For further information on NOAA Space Weather Scales refer to: <a href="http://www.swpc.noaa.gov/noaa-scales-explanation">http://www.swpc.noaa.gov/noaa-scales-explanation</a> For further information on Sunspot Activity refer to: <a href="https://www.swpc.noaa.gov/phenomena/sunspotssolar-cycle">https://www.swpc.noaa.gov/phenomena/sunspotssolar-cycle</a>				

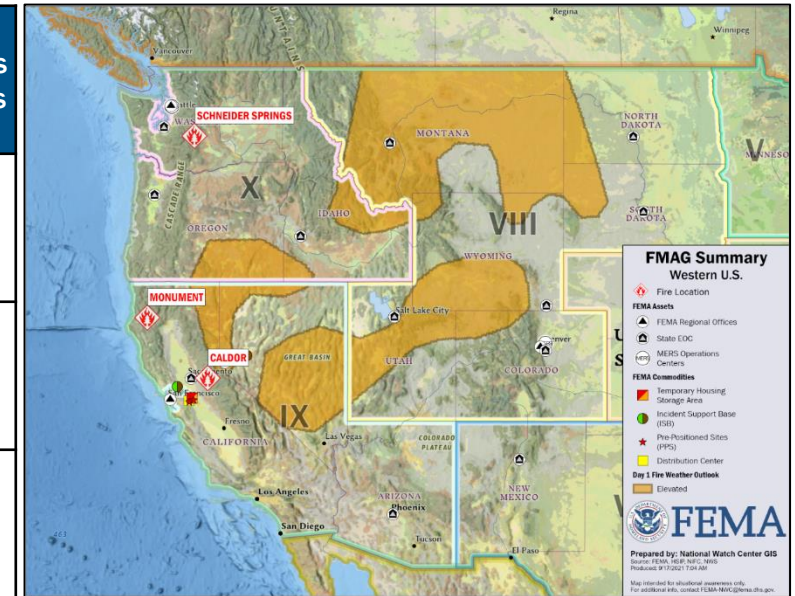


FEMA

National Watch Center

# Wildfire Summary

Fire Name (County, ST)	FMAG #	Acres Burned	Percent Contained	Evacuations	Structures (Homes / Other)			Fatalities / Injuries
					Threatened	Damaged	Destroyed	
Monument (Trinity, CA)	5412-FM-CA	216,732 (+1,688)	50%	M: 7,925 (-125)	H: 5,780	H: 3	H: 20	0/12
				V: 0	O: 4,800	O: 0	O: 30	
Caldor (El Dorado, CA)	5413-FM-CA	219,267	71%	M: 610 (-2,547)	H: 5,291 (-7,917)	H: 53	H: 782	0/16
				V: 0	O: 174 (-300)	O: 28	O: 221	
Schneider Springs (Yakima, WA)	5415-FM-WA	102,819	31% (+6)	M: 240	H: 1,658*	H: 0	H: 0	0/9
				V: 0	O: 0	O: 0	O: 0	



\*Structures are a mix of residential, commercial, and other minor structures

(Evacuations: M = Mandatory / V = Voluntary; Structures: H = Homes and Mixed Commercial/Residential / O = Non-residential Commercial/Other Minor Structures)



**FEMA**

National Watch Center

# Joint Preliminary Damage Assessments

Region	State / Location	Incident	IA	Number of Counties		Start – End
			PA	Requested	Complete	
I	NH	Severe Storms and Flooding Jul 29-30	IA	0	0	N/A
			PA	2	0	8/30 - TBD
	MA	Severe Storms and Flooding Jul 16-21	IA	0	0	N/A
			PA	5	0	8/10 - TBD
II	NY	Tropical Storm Fred Aug 19	IA	5	3 (+3)	8/31 - TBD
			PA	8	0	9/13 - TBD
III	DE	Tropical Depression Ida Sep 1	IA	1	1	9/9 - 9/9
			PA	1	0	TBD
	MD	Tropical Depression Ida Sep 1	IA	2	2	9/13 - 9/13
			PA	2	0	TBD
	VA	Flooding and Mudslide Aug 30	IA	1	0	9/16 - TBD
			PA	1	0	9/16 - TBD
IV	MS	Tropical Cyclone Ida Aug 29	IA	8	8 (+4)	9/9 - 9/12
			PA	21 and MBCI*	0	9/20 - TBD
VIII	MT	Richard Spring Wildfire Aug 10 and continuing	IA	0	0	N/A
			PA	3	0	9/7 - TBD

\*MBCI - Mississippi Band of Choctaw Indians



FEMA

National Watch Center

# Declaration Requests in Process – 2

State / Tribe / Territory – Incident Description	Type	IA	PA	HM	Requested
NH – Severe Storms and Flooding	DR		X	X	Sep 11
VT – Severe Storms and Flooding	DR		X	X	Sep 13



FEMA



# FEMA Common Operating Picture

### FEMA HQ

NWC	NRCC
Monitoring	Level III

### FEMA REGIONS

Watch	RRCC
Monitoring	I
Monitoring	II
Monitoring	III
Monitoring	IV
Monitoring	V
Monitoring	VI
Alt Location	VII
Monitoring	VIII
Monitoring	IX
Monitoring	X

**Notes:**

**NRCC:** COVID-19

**RRCCs:** COVID-19

**RV RWC:** Day Shift / Monitoring  
Night Shift / Remote Ops

**RVII RWC:** COVID-19 Protocols

**PR:** Earthquakes

**NY, NJ:** TC Ida

**TX:** TS Nicholas

**LA:** TS Nicholas & TC Ida

**OR:** Drought & Wildfires

**MT, CO, AZ, CA, NV, ID, & WA:** Wildfires

### Major Disasters (DR): 66

### Emergency Disasters (EM): 16

★ JFOs: 6 / VJFOs: 12

● Staging Area

■ Declared County (non-COVID-19 Declarations)

□ Fully Activated

□ Partially Activated

□ Monitoring

As of 8:00 a.m. ET September 17, 2021  
Created by FEMA NWC

### N-IMATs

2-4 Teams Available

Red	LA
White	LA
Blue	Alert (UNGA)
Gold	

### R-IMATs

4-6 Teams Available

I	2
II	NJ
III	PA
IV-1	
IV-2	
V	PR
VI-1	LA
VI-2	
VII	LA
VIII	1
IX-1	CA
IX-2	CA
X	
FMC	PMC
NMC	Deployed



# FEMA

Helping people before, during, and after disasters.



*Scan to subscribe to this briefing.*