

FEMA National Watch Center

# Daily Operations Briefing

Wednesday, February 17, 2021

8:30 a.m. ET



**FEMA**

# National Current Ops / Monitoring

---

## New Significant Incidents / Ongoing Ops:

- COVID-19
- Winter storms – Pacific Northwest; Southern Plains to Northeast
- Potential weather impacts on vaccination site operations

## Hazard Monitoring:

- Heavy snow possible – Southern Plains to Central Appalachians
- Severe thunderstorms possible – Central Gulf Coast
- Freezing rain possible – Southern Plains to Mid-Atlantic

## Disaster Declaration Activity:

- None

## Event Monitoring:

- No significant scheduled activity



**FEMA**

# Winter Storms – PNW & Southern Plains to Northeast

**Situation:** The winter storm that brought significant snow and freezing temperatures to the Southern Plains and Northeast over the last few days has moved into Canada. Snow and ice impacts will come to an end but frigid arctic air will remain over the central U.S. over the next couple of days. Another round of winter weather began overnight, again bringing heavy snow and ice from the Southern Plains to the Mississippi Valley, and moving into the Northeast by Thursday.

## Northwest – Major Winter Storm

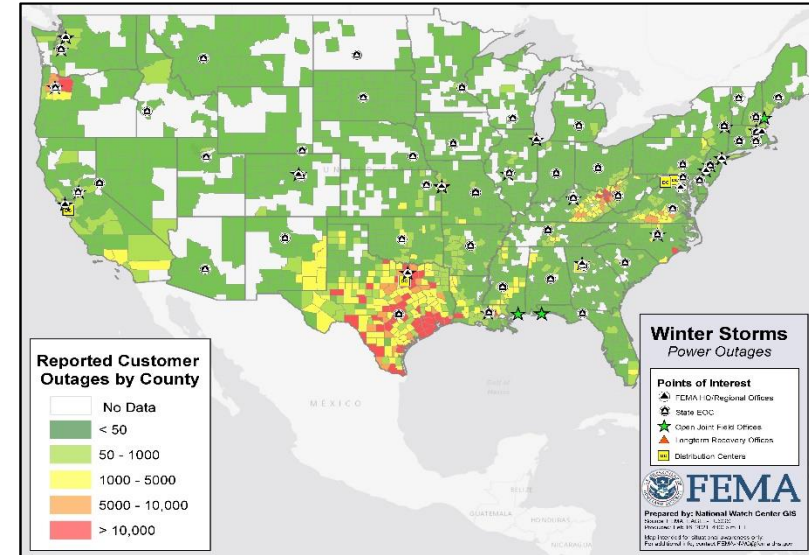
### Lifeline Impacts:

- Energy: OR: 164k (-12k) customers without power (DOE Eagle-I, as of 7:15 a.m. ET)

## Southern Plains to Northeast – Major Winter Storm

### Lifeline Impacts:

- Safety and Security: AL & IL; many schools closed, delayed, or operating virtually
- Food, Water, and Shelter:
- Shelters: TX: 76 (+42) shelters with 1681 (-541) occupants; TN: 4 (-7) with 48 (-182) occupants; AL: 6 with 150 occupants; MS: 5 with unknown number of occupants and 6 on standby; KY: 5 with 25 occupants (source: ARC, as of 07:05 a.m. ET)
  - Water: TX: City of Abilene (pop 124k) issued boil water notice; 3 water treatment plants closed due to power outages; city of Fort Worth boil water notice for 100k customers expected to continue through Feb 17
- Health and Medical:
  - Fatalities: 9 confirmed (KY 3, NC 3, TN 3) 2 unconfirmed (KY 1, MS 1) (Region IV Update 10:04 p.m. ET)
- Transportation:
  - TX: George Bush Intercontinental/Houston Airport (IAH) re-opened
  - AL: All major highways open 15 counties with state routes impacted, 8 counties with US highways impacted (Region IV Update 10:04 p.m. ET)
  - LA: Baton Rouge Airport re-opened, I-49 closed from US-167 to LA-498, I-55 closed from LA-10 to MS State line



- Energy: (source: Eagle-I, as of 07:15 a.m. ET)
  - TX: 3.2 million (27%) customers without power (peak 4.2M),
    - 60 generators and associated equip. staged at Texas Consolidated Staging Area/Ft. Worth DC
    - Priority for generator use is hospitals and nursing homes;
    - TX natural gas production curtailed; cold temperatures have caused natural gas wellhead “freeze-offs”
  - VA: 45k (-1k); WV: 71k (-2k); KY: 98k; OK: 447 (-3k); LA: 45k(-4k); MS: 17k (-1k) customers without power



FEMA

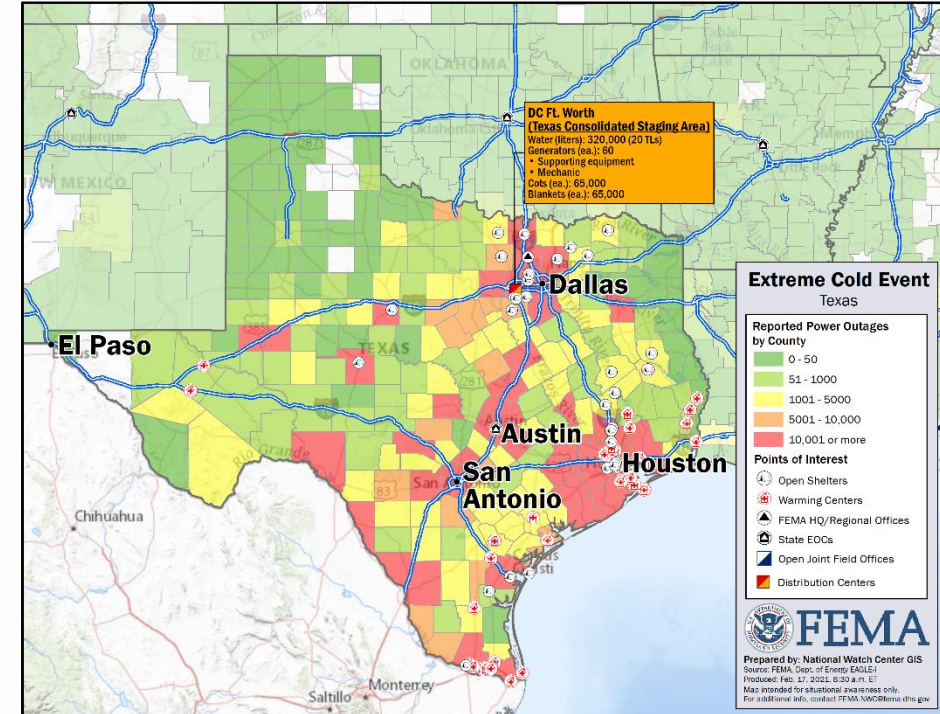
# Winter Storms – PNW & Southern Plains to Northeast

## State / Local Response:

- OR EOC at Full Activation (COVID)
- KY, TN, AR, TX, & OK at Partial Activation (Winter Storm & COVID)
- LA, NC, VA, & MD EOCs at Partial Activation (COVID)
- WV, OR, MS, TX, LA, OK, VA, KS, AL, IL, & TN Governors declared States of Emergency

## FEMA / Federal Response:

- DOE issued emergency order to authorize dispatch of additional generation units to ERCOT region
  - This allows ERCOT to dispatch units to meet electricity demand through Feb 19, even if they exceed emission limits of sulfur dioxide, nitrogen oxide, mercury, and carbon monoxide
- Region II working from Alt Location until 7:00 p.m. ET today; due to winter storms
- Region III RWC monitoring; RRCC at Level I (COVID); IMAT deployed to RRCC (COVID)
- Region IV RWC working is monitoring; RRCC at Level III virtually; IMATs are FMC
- Region VI/Denton MOC monitoring; RRCC at Level III; IMAT-1 deployed to NM and OK; IMAT-2 deployed to TX (COVID)
- Region V RWC working from alt. location due to winter storms
- Region X/Bothell MOC monitoring; RRCC at Level III (COVID); IMAT deployed to RRCC (COVID)
- Emergency Declaration FEMA-3554-EM-TX - Approved
- NWC is monitoring; NRCC at Level I (COVID)



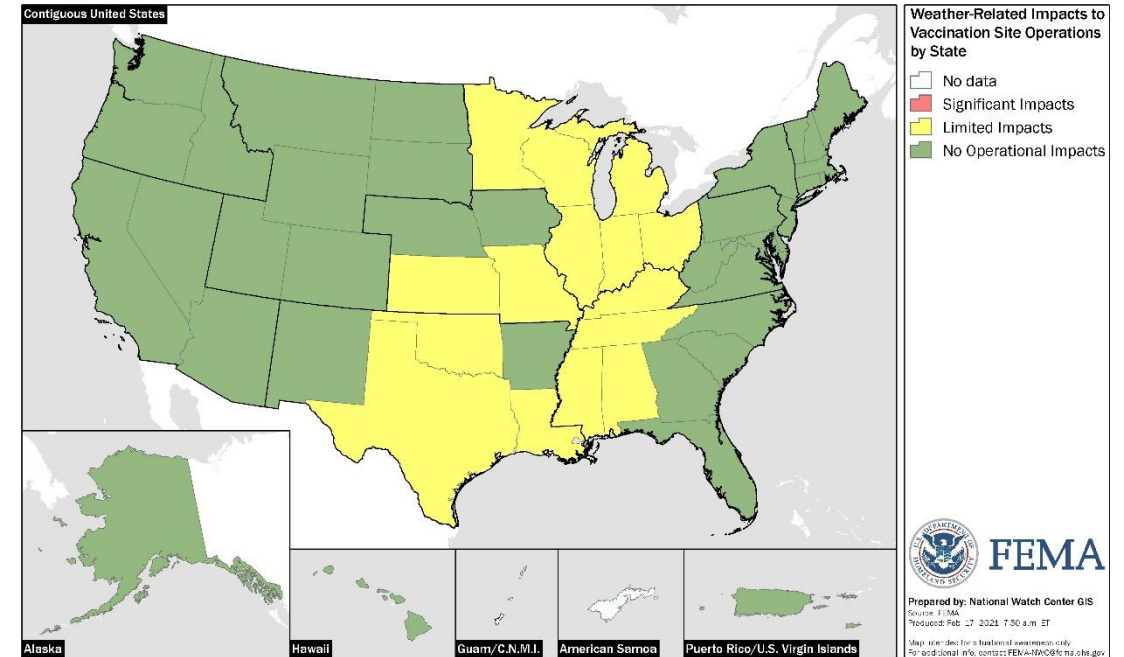
FEMA

# COVID-19 Weather-related impacts to Vaccination Sites

## Situation:

The National Watch Center, in coordination with all ten Regional Watches, is monitoring for potential weather impacts to COVID-19 vaccination sites

- The highlighted states have reported COVID-19 vaccination site closures due to the ongoing storms and will reschedule appointments once the storms have passed

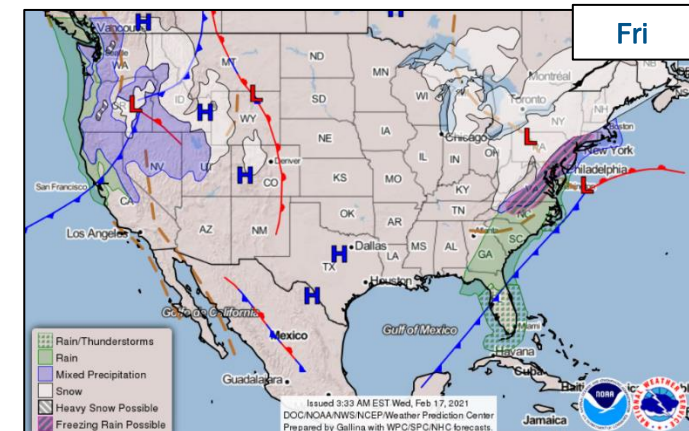
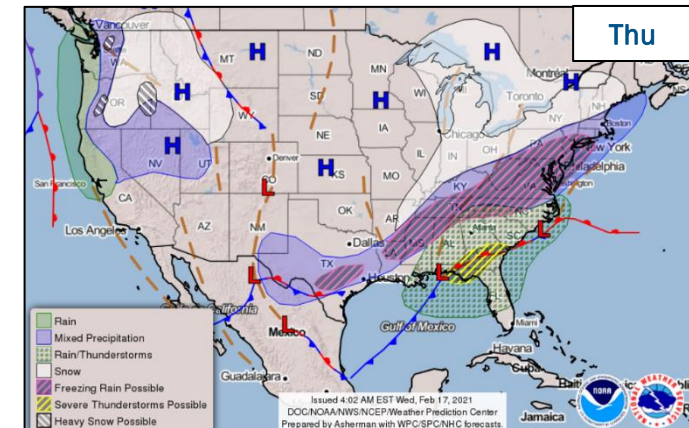
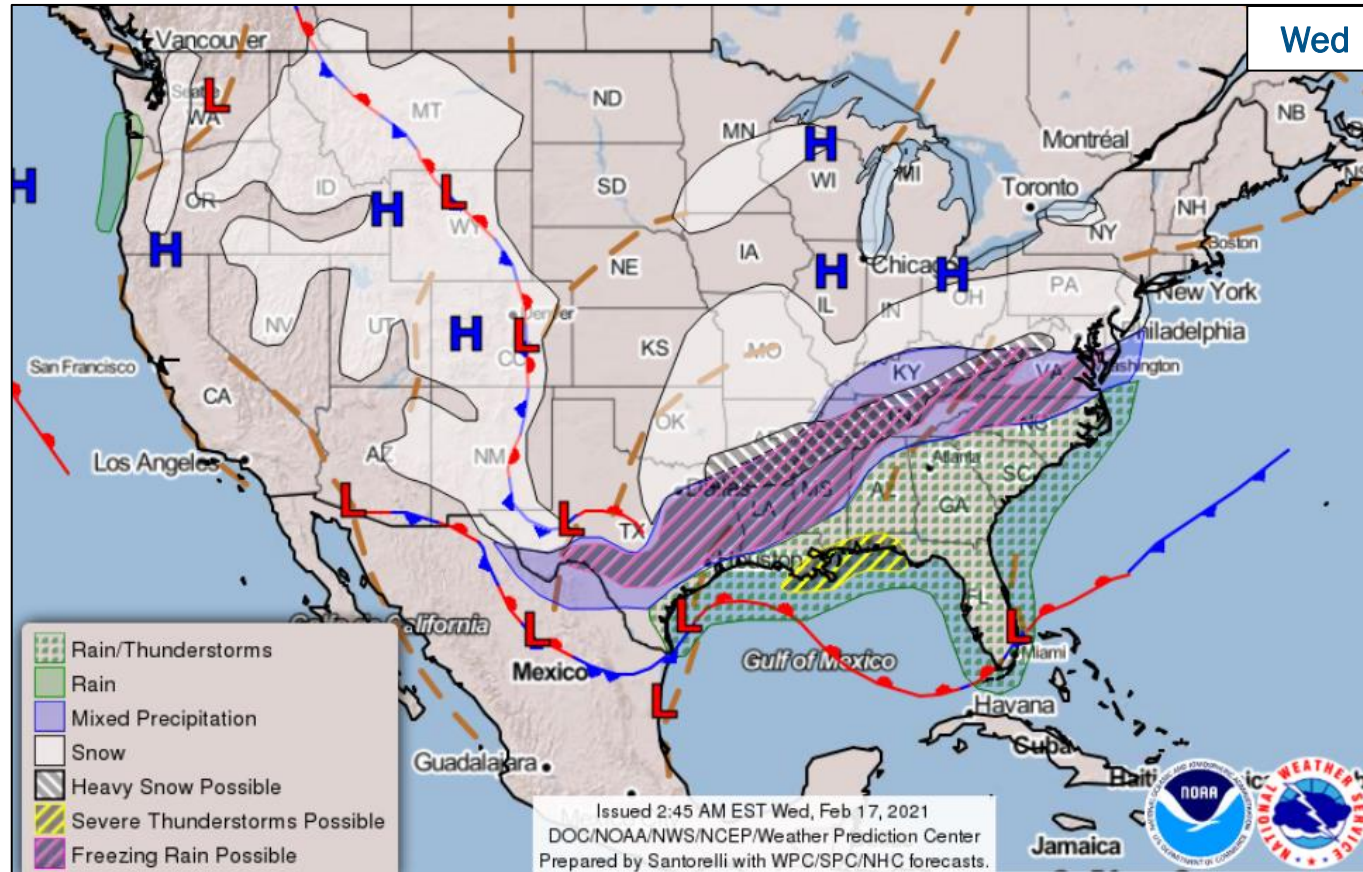


FEMA

National Watch Center



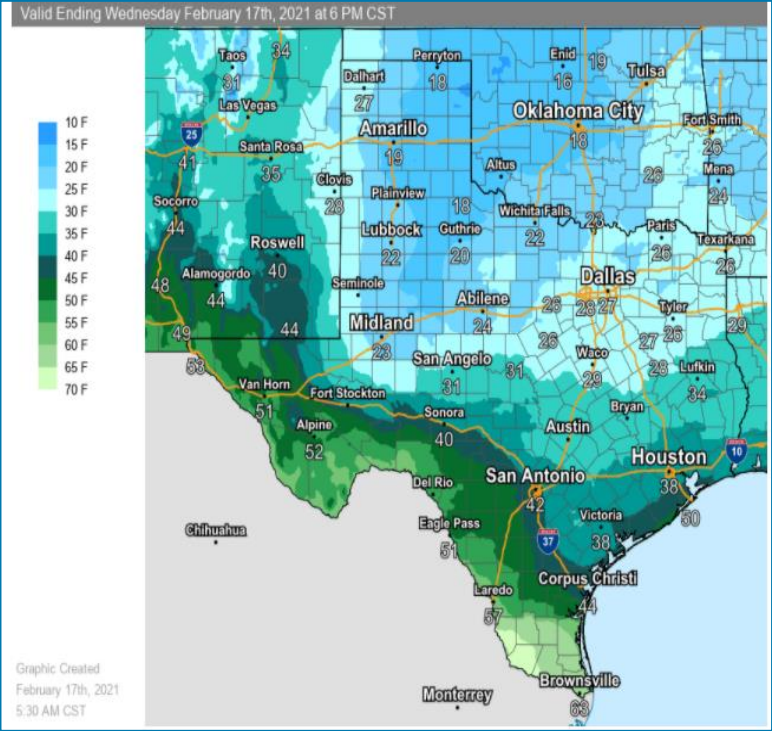
# National Weather Forecast



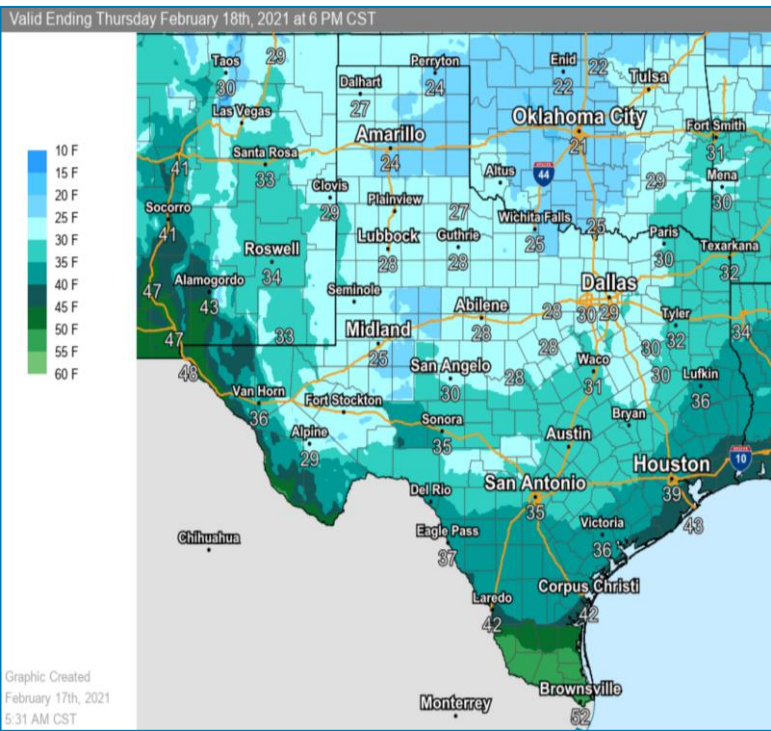
FEMA

National Watch Center

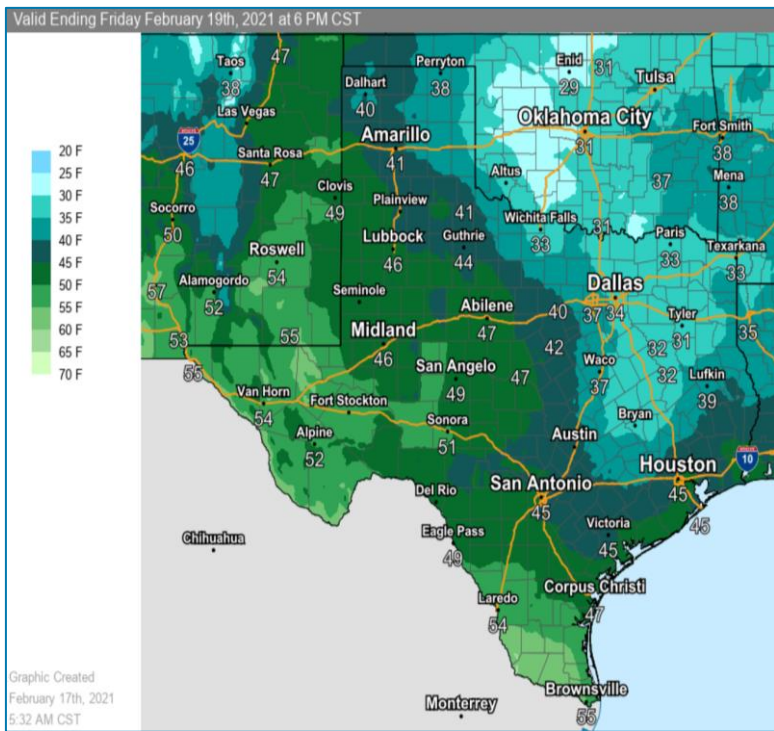
# Texas 3-Day High Temperature Forecast



Wednesday



Thursday



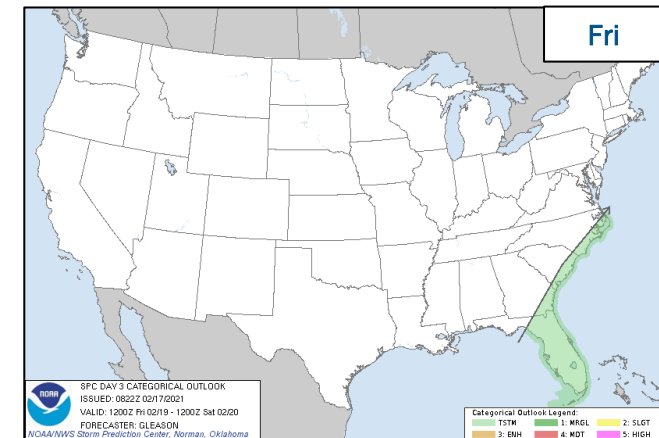
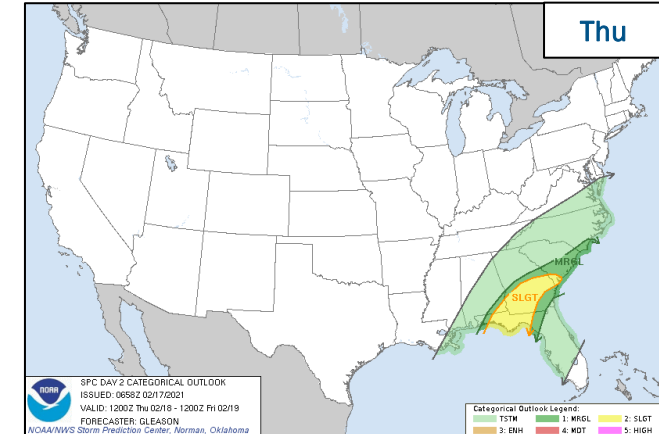
Friday



FEMA



# Severe Weather Outlook

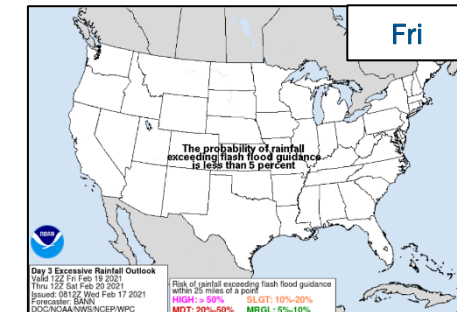
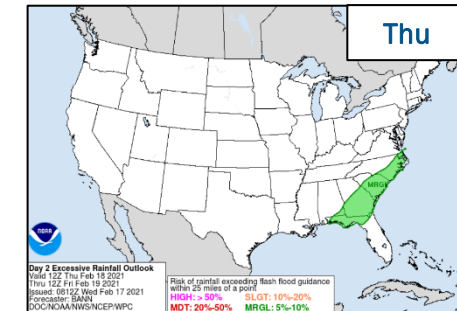
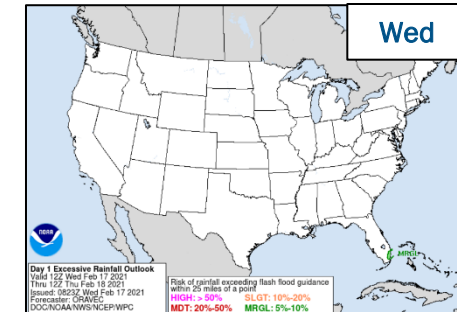
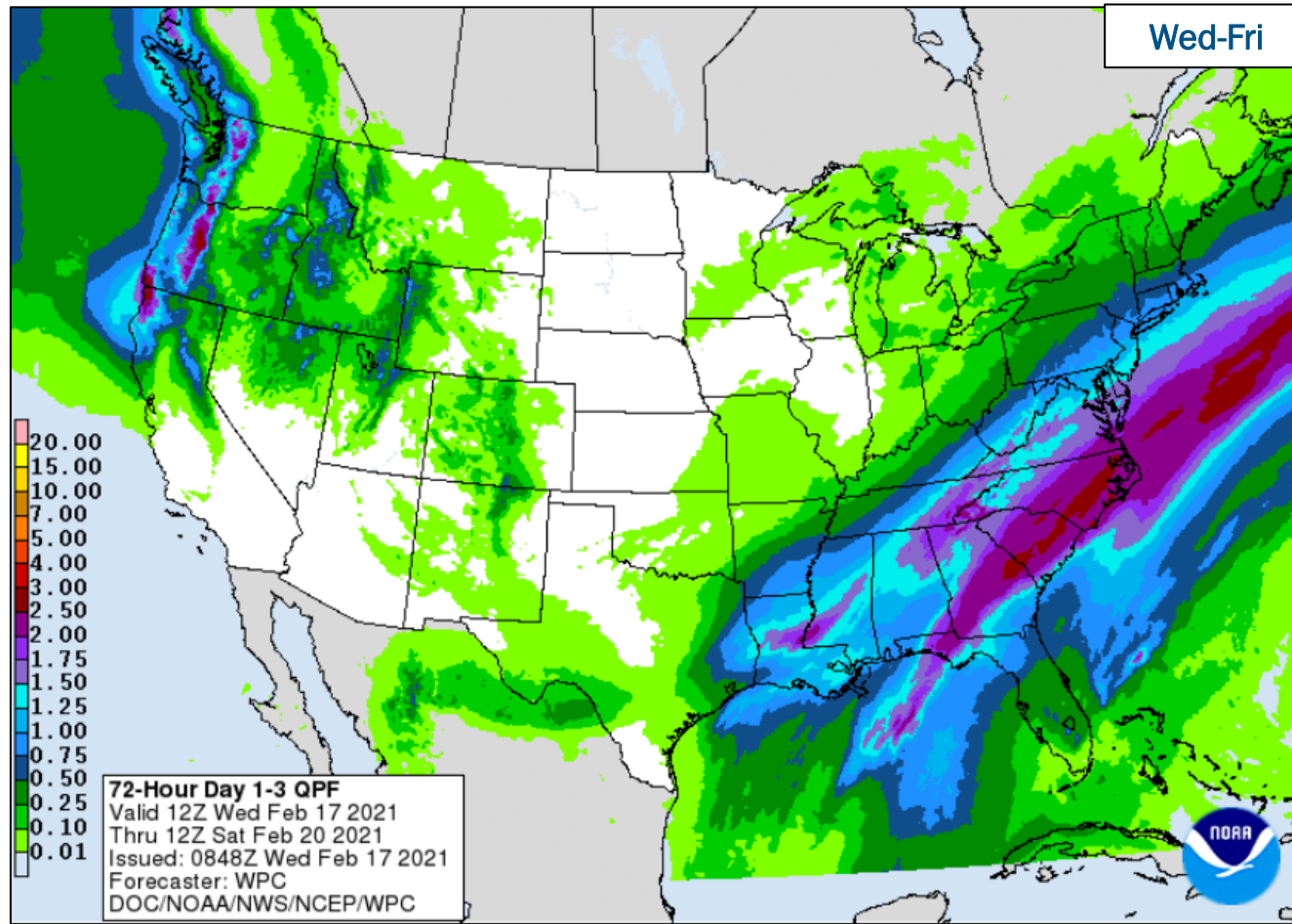


FEMA

National Watch Center



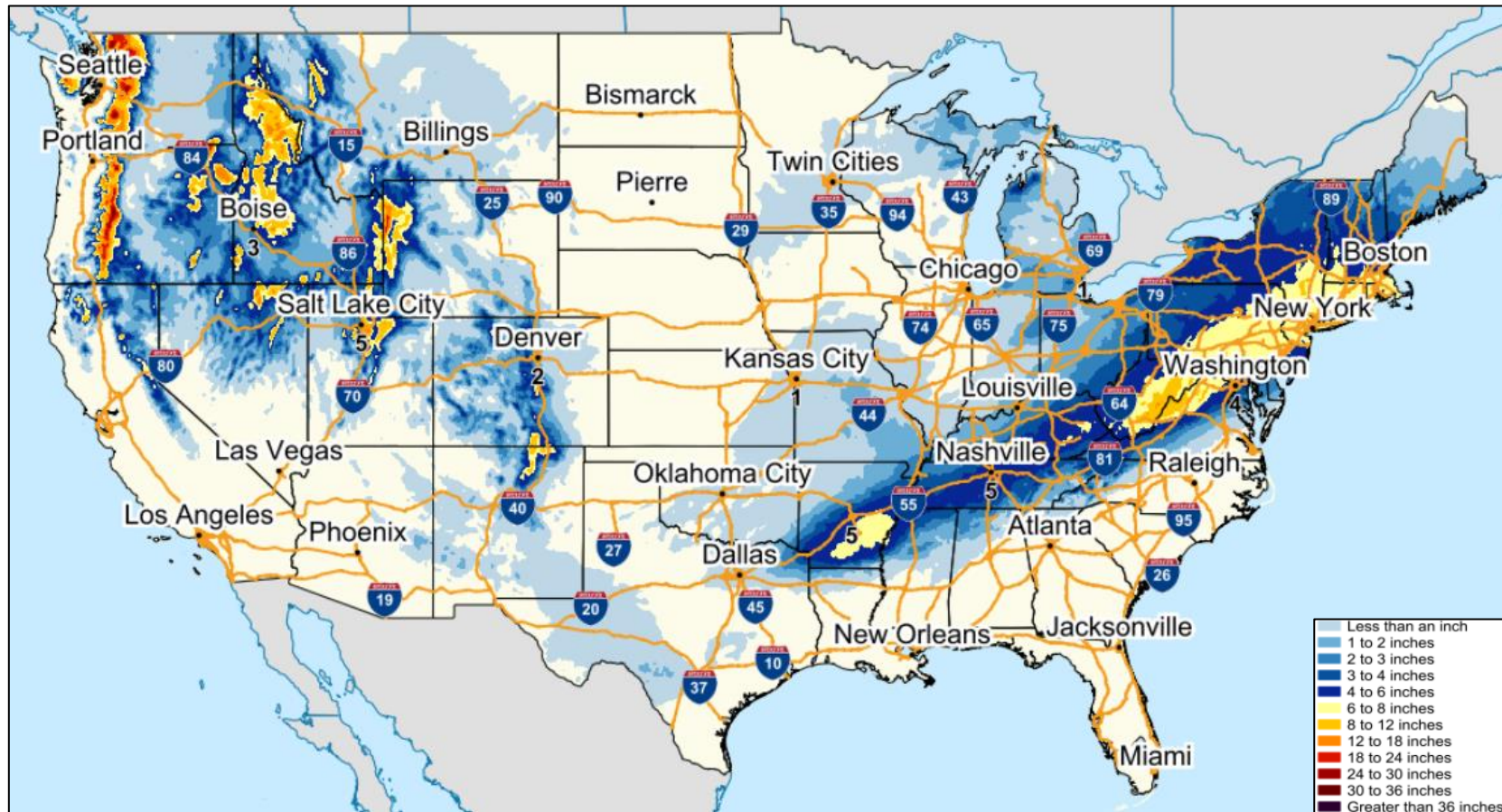
# Precipitation & Excessive Rainfall



FEMA

National Watch Center

# Forecast Snowfall

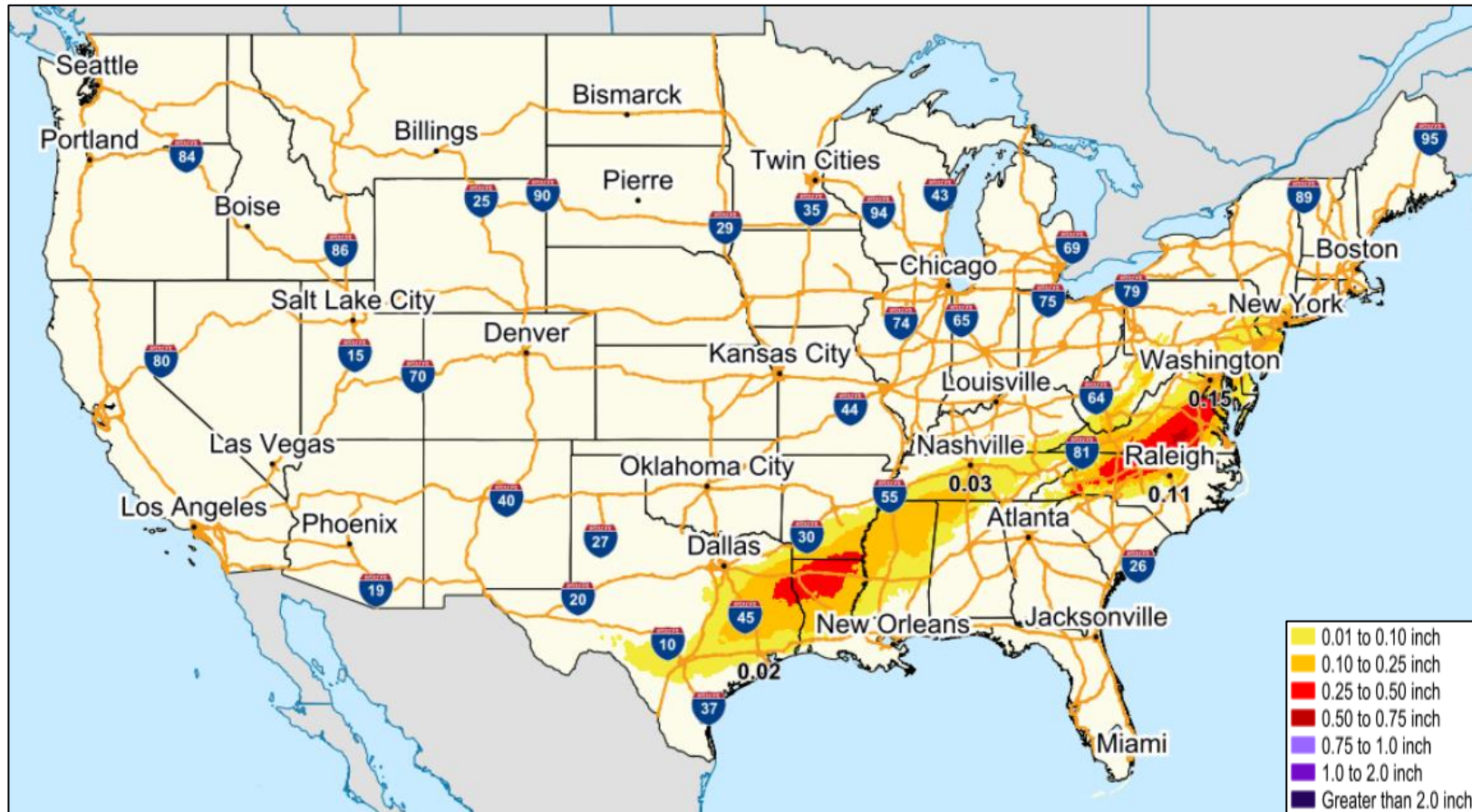


FEMA

National Watch Center



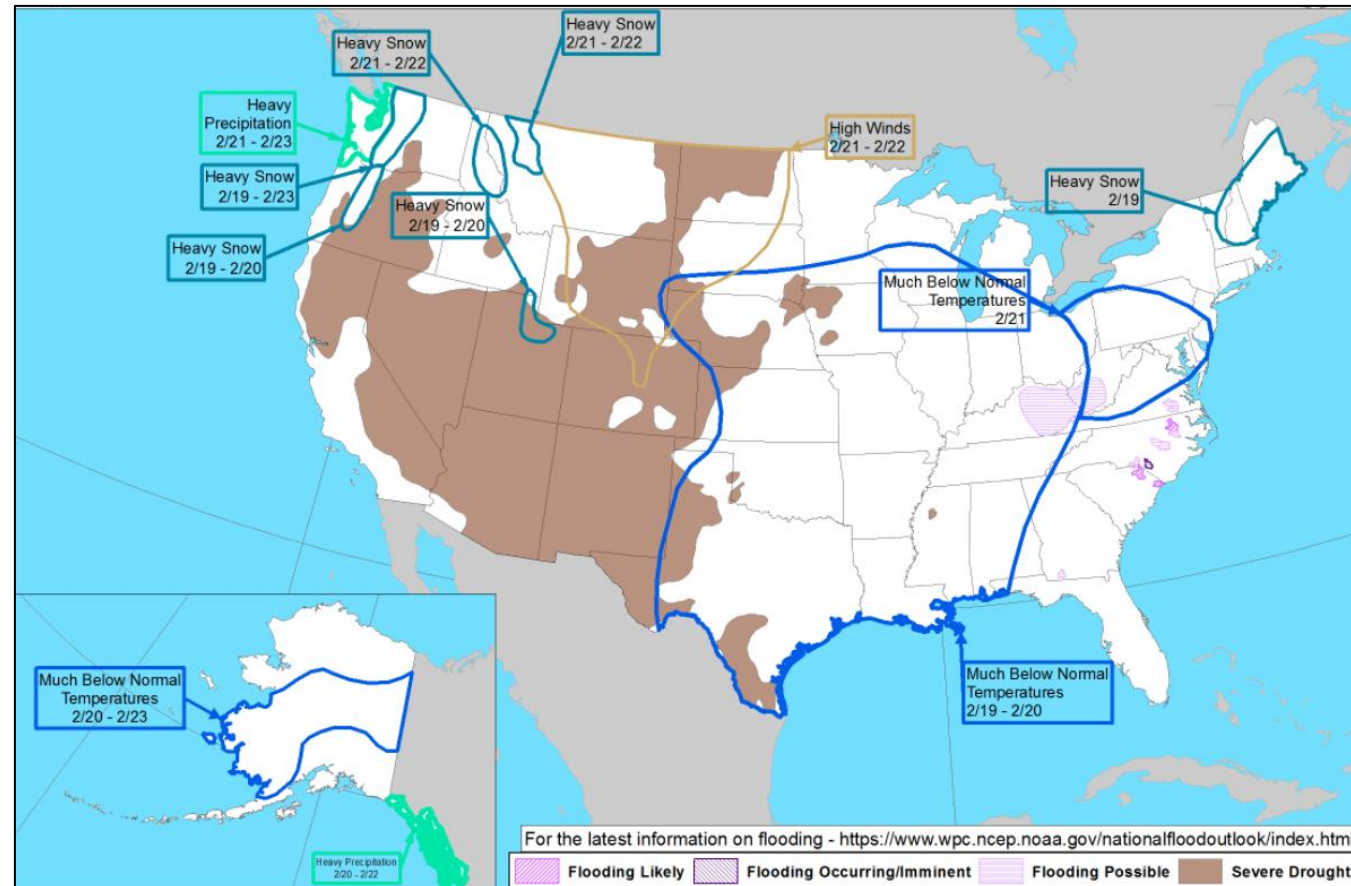
# Ice Accumulation Forecast



FEMA

National Watch Center

# Hazards Outlook – Feb 19 - 23



FEMA



# Joint Preliminary Damage Assessments

Region	State / Location	Event	IA	Number of Counties		Start – End
			PA	Requested	Complete	
X	WA	Severe Winter Storms Dec 28, 2020 to Jan 16, 2021	IA	0	0	N/A
			PA	16	0	2/11 – TBD



**FEMA**

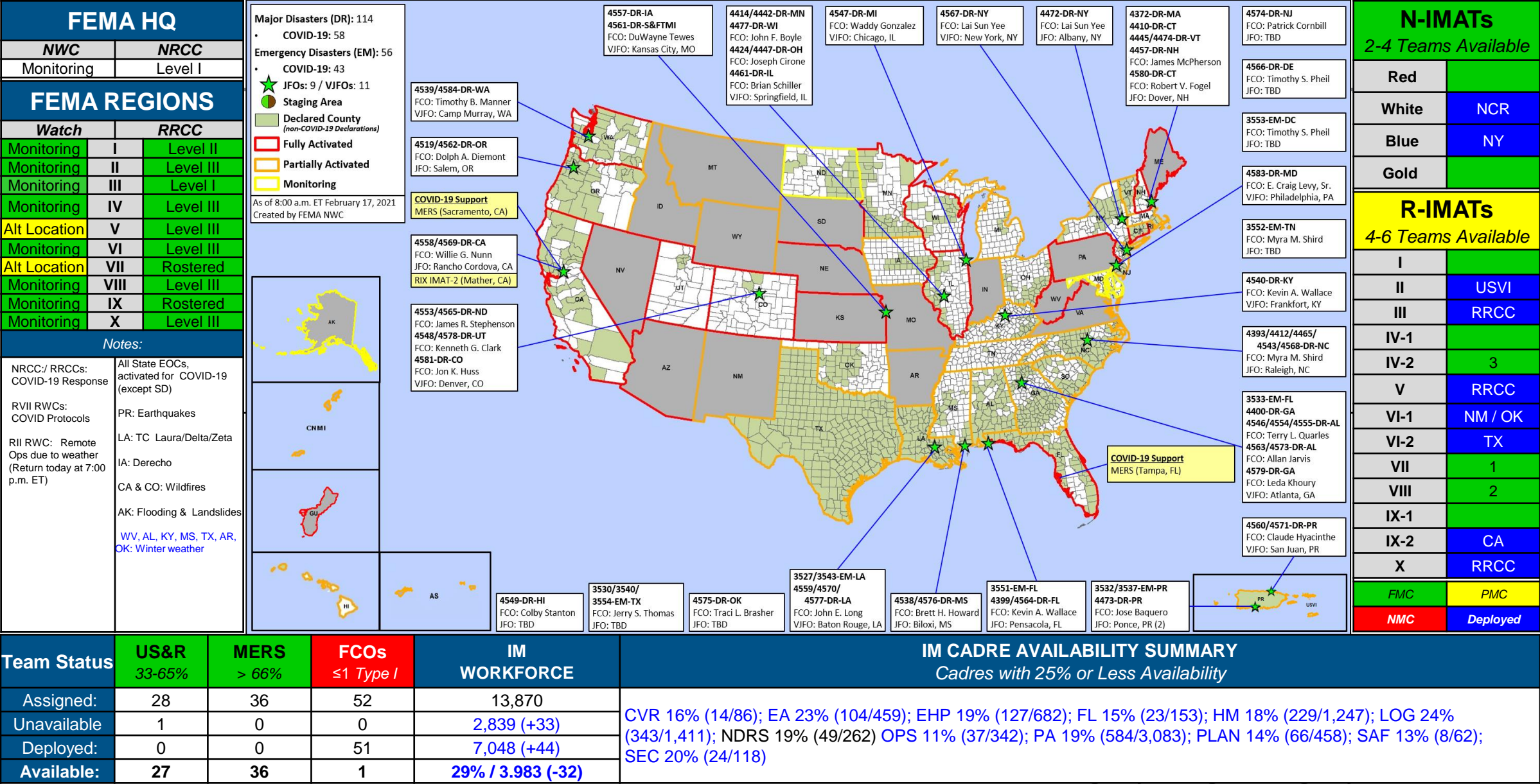
# Declaration Requests in Process – 5

State / Tribe / Territory – Incident Description	Type	IA	PA	HM	Requested
AK – Severe Storms, Flooding, Landslides, and Mudslides	DR		X	X	1/29
NC – Tropical Storm Eta	DR		X	X	2/9
VA – 59 <sup>th</sup> Presidential Inauguration (Appeal)	EM		X		2/9
AL – Tornado	DR	X		X	2/11
MD – 59 <sup>th</sup> Presidential Inauguration (Appeal)	EM		X		2/12



**FEMA**

# FEMA Common Operating Picture





# FEMA

Helping people before, during, and after disasters.

*[Click here to subscribe to this briefing.](#)*