

FEMA National Watch Center

# Daily Operations Briefing

Sunday, February 21, 2021

8:30 a.m. ET



**FEMA**

# National Current Ops / Monitoring

---

## New Significant Incidents / Ongoing Ops:

- COVID-19
- Winter Storm Response – Southern Plains
- Potential weather impacts on vaccination site operations

## Hazard Monitoring:

- Heavy Snow – Pacific Northwest, Northern Rockies, Central Plains
- Freezing Rain – Pacific Northwest, Central Plains, Great Lakes, Ohio Valley, Southern Appalachians

## Disaster Declaration Activity:

- None

## Event Monitoring:

- No significant scheduled activity



**FEMA**

# Winter Storms – Southern Plains

**Situation:** Restoration efforts continue across FEMA Region VI, as energy demands begin to stabilize. However, many survivors are displaced due to lack of water, heat, and broken water lines. Response and recovery efforts continue.

## **Lifeline Impacts:**

### **Food, Water, and Shelter:**

Shelters: (ARC website 12:00 a.m. ET, Feb 21)

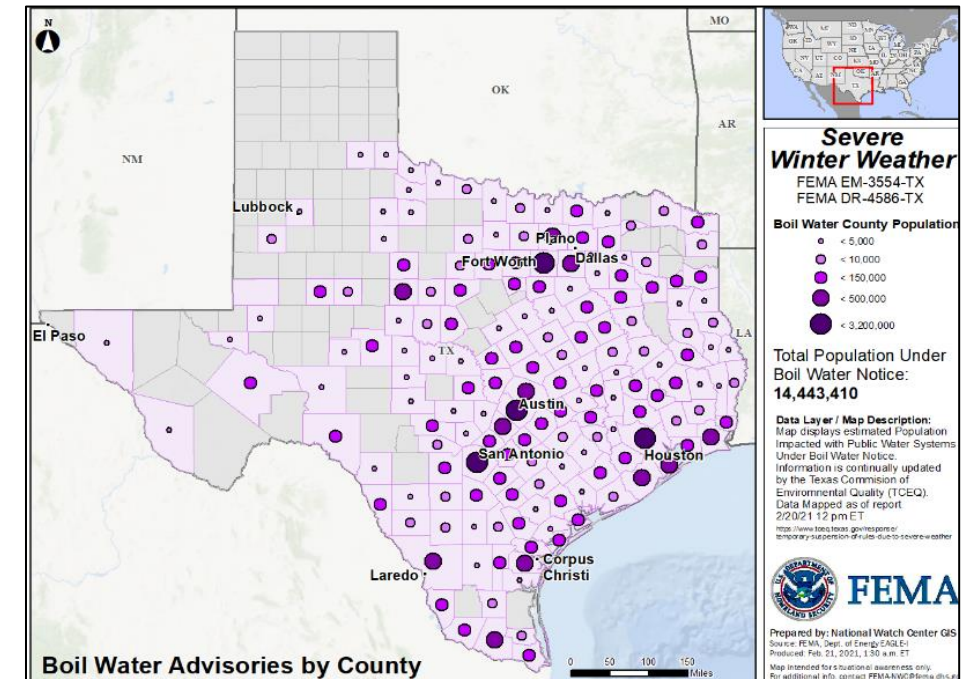
- TX: 39 (+8) shelters / 332 warming stations; 1,731 (-81) total occupants; OK: 4 (-9) shelters, 3 (-1) warming stations open; 48 total occupants

### **Water / Food:**

- LA: 283 (+48) Boil Water Advisories affecting 1.3M (+200k) statewide; 75 (-23) water/ sewer systems outages affecting 112k (-123k)
- LA working to get bottled water to critical facilities in Bossier/Shreveport, but roads are impassable; 2M liters of water requested (Region VI SLB 6:30 p.m. ET, Feb 20)
- TX: 1,105 (+539) Boil Water Advisories affecting 14M statewide; 9.2M liters of water requested (Region VI SLB 6:30 p.m. ET, Feb 20)
- TX: 8 out of 21 food banks reporting unmet needs; 6.2M meals requested (Region VI SLB 6:30 p.m. ET, Feb 20)

### **Health and Medical:**

- Fatalities: LA: 3 confirmed; TX: 9 confirmed (RVI Report 7:00 p.m. ET, Feb 19)
- Health Care Facilities: AR: 12 closed; 8 partially closed; LA: 2 closed, 9 partially closed; OK: 1 closed, 51 partially closed; TX: 115 closed, 501 partially closed, 89 unknown
- TX: counties report fewer than 50% of pharmacies are open (ASPR SLB 5:00 p.m. ET, Feb 20)
- LA: 47 (+17) hospitals reporting water issues, 1 (-6) hospitals, and 1 (-1) nursing home on generator power (ASPR SLB 5:00 p.m. ET, Feb 20)
- Dialysis, oxygen, and blood supply identified as areas of concern, multiple dialysis centers closed due to power/water pressure issues/boil water notices (Region VI SLB 6:30 p.m. ET, Feb 20)
- TX: RRF 410 (-1,690) oxygen cylinders requested; expected to be delivered Monday (FEMA Logistics, Feb 20)



### **Energy:** (Eagle-I, 7:30 a.m. ET, Feb 21)

- TX: 31k (-38k) customers without power (peak 3.4M)
- LA: 15k (-19k); customers without power
- Gas production coming back online (SLB 6:00 a.m. ET, Feb 21)
- 11 refineries reported full or near-full shutdown, impacting approximately 3.7M barrels per day (b/d); 20% of total U.S. capacity; some refineries may be offline for several weeks for repairs (ESF #12 Situation Report #10, 11:14 a.m. ET, Feb 20)



**FEMA**

National Watch Center

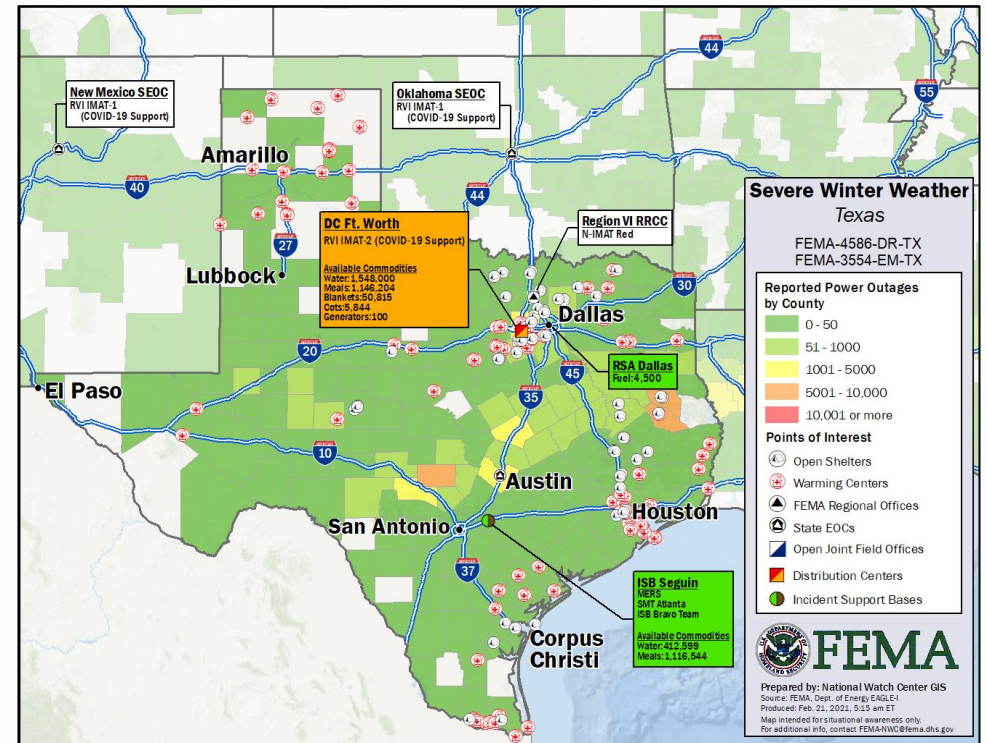
# Winter Storms – Southern Plains

## State / Local Response:

- LA, TX, & OK at Partial Activation (Winter Storm & COVID)
- AR EOC at Partial Activation (COVID)
- TX & OK Governors declared States of Emergency

## FEMA / Federal Response:

- Region VI/Denton MOC Enhanced Watch; RRCC at Level I; IMAT-1 deployed to NM and OK; IMAT-2 deployed to TX (COVID)
- HHS declared a Public Health Emergency for the State of Texas
- Emergency Declarations approved for OK, LA, & TX
- Major Disaster Declaration FEMA-4586-DR-TX – Approved
- National IMAT-RED deployed to Denton, TX
- 60 generators staged at DC Ft. Worth; priority for hospitals and nursing home
- 10k Diesel ordered for Texas, awaiting ETA from DLA (Region VI SLB 6:30 p.m. ET, Feb 20)
- 3.6M liters of water received in staging areas; 1.5M liters of water shipped to TX (LCSMS Snap-Shot; 8:34 p.m. ET, Feb 20)
- 3 C-17's scheduled to depart Ft. Worth to Abilene/McAllen/Galveston; flights loaded with pallets of bottled water (Region VI SLB 6:30 p.m. ET, Feb 20)
- 1.3M meals received and staged; 226k meals shipped to TX (LCSMS; 8:34 p.m. ET, Feb 20)
- 126k blankets requested; order shipped to TX (LCSMS; 8:34 p.m. ET, Feb 20)
- Incident Support Base (ISB)/Forward Staging Area (FSA) at Seguin, TX (Region VI SLB 6:30 p.m. ET, Feb 20)
  - Staging Management Team (SMT) and ISB Bravo Team deployed to support



- USACE Type 3 Power Restoration Team staged in DFW (Region VI SLB 6:30 p.m. ET, Feb 20)
- MERS deployed to Seguin, TX (Region VI SLB 6:30 p.m. ET, Feb 20)
- 50 ALS ambulances staged throughout TX
- NWC is monitoring; NRCC at Level I (COVID)



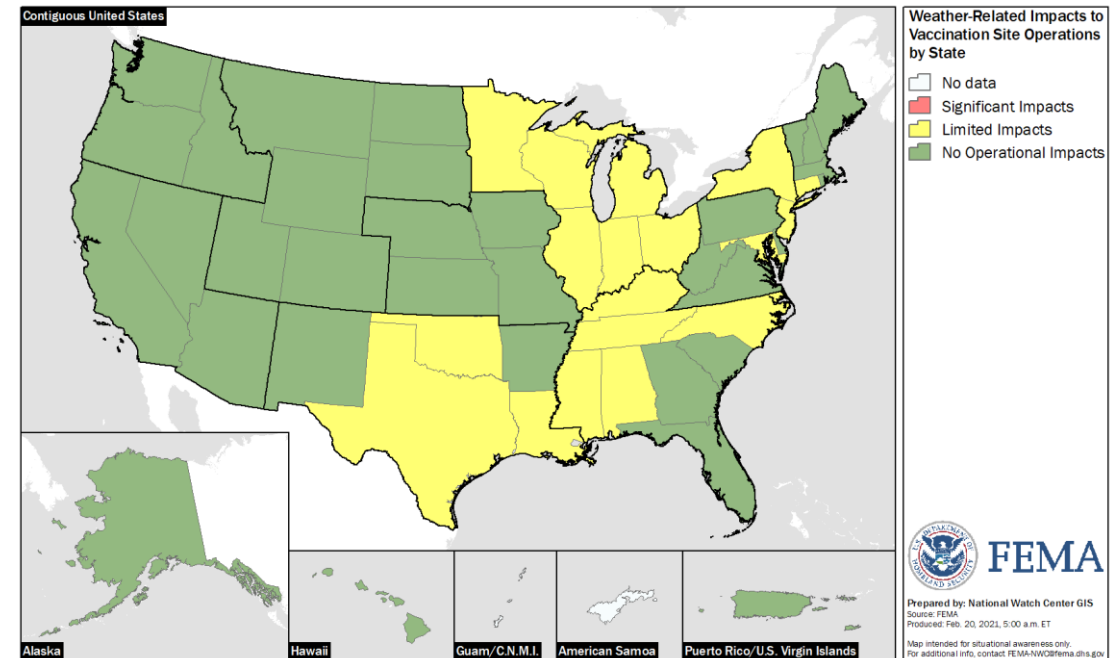
FEMA

# COVID-19 Weather-Related Impacts to Vaccination Sites

## Situation:

The National Watch Center, in coordination with all ten Regional Watches, is monitoring for potential weather impacts to COVID-19 vaccination sites

- The highlighted states have reported COVID-19 vaccination site closures due to the winter storms and will reschedule appointments once the storms have passed.
- 75 Federally Supported Community Vaccination Centers closed due to inclement weather.

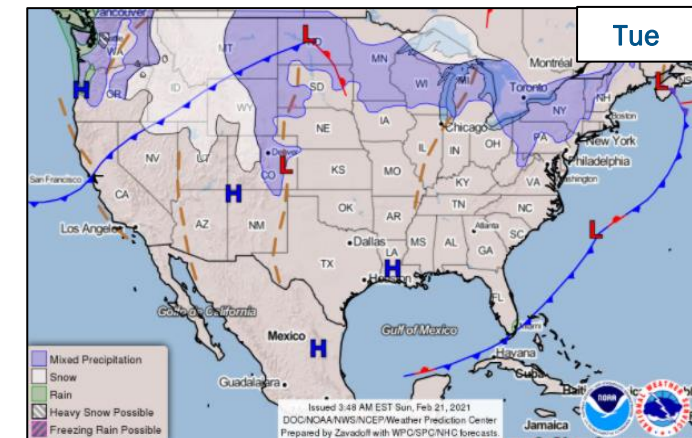
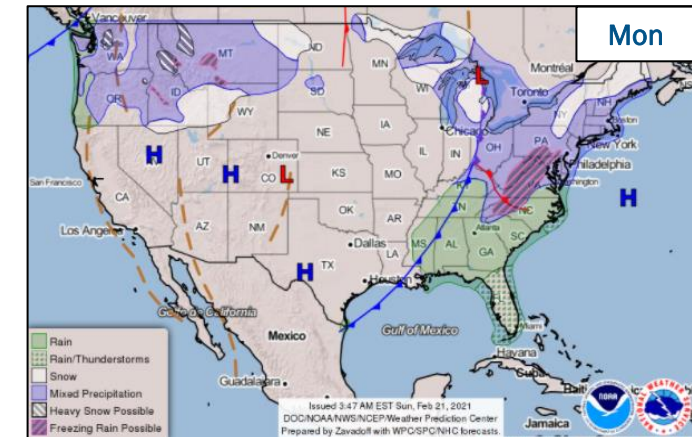
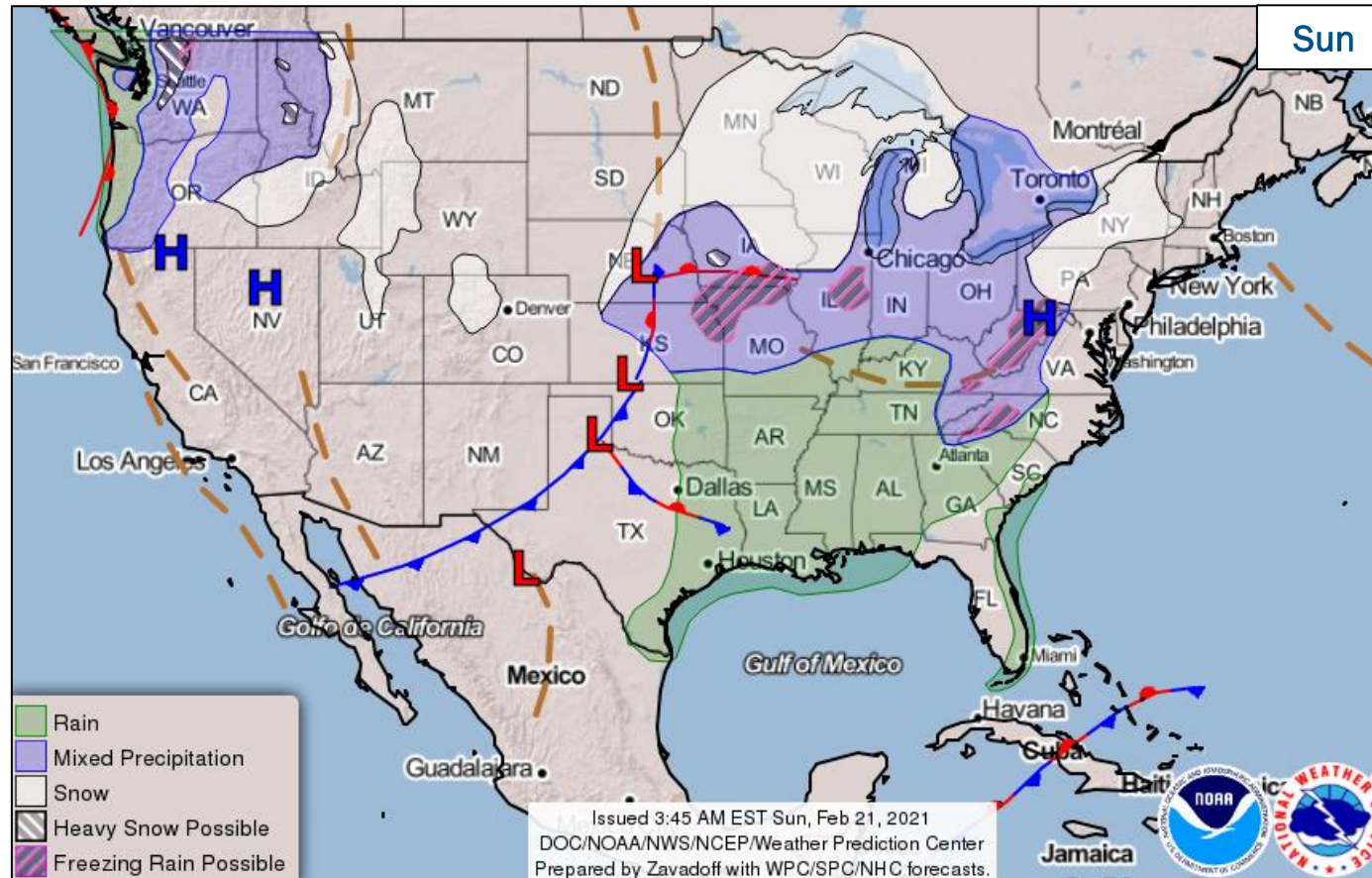


FEMA

National Watch Center



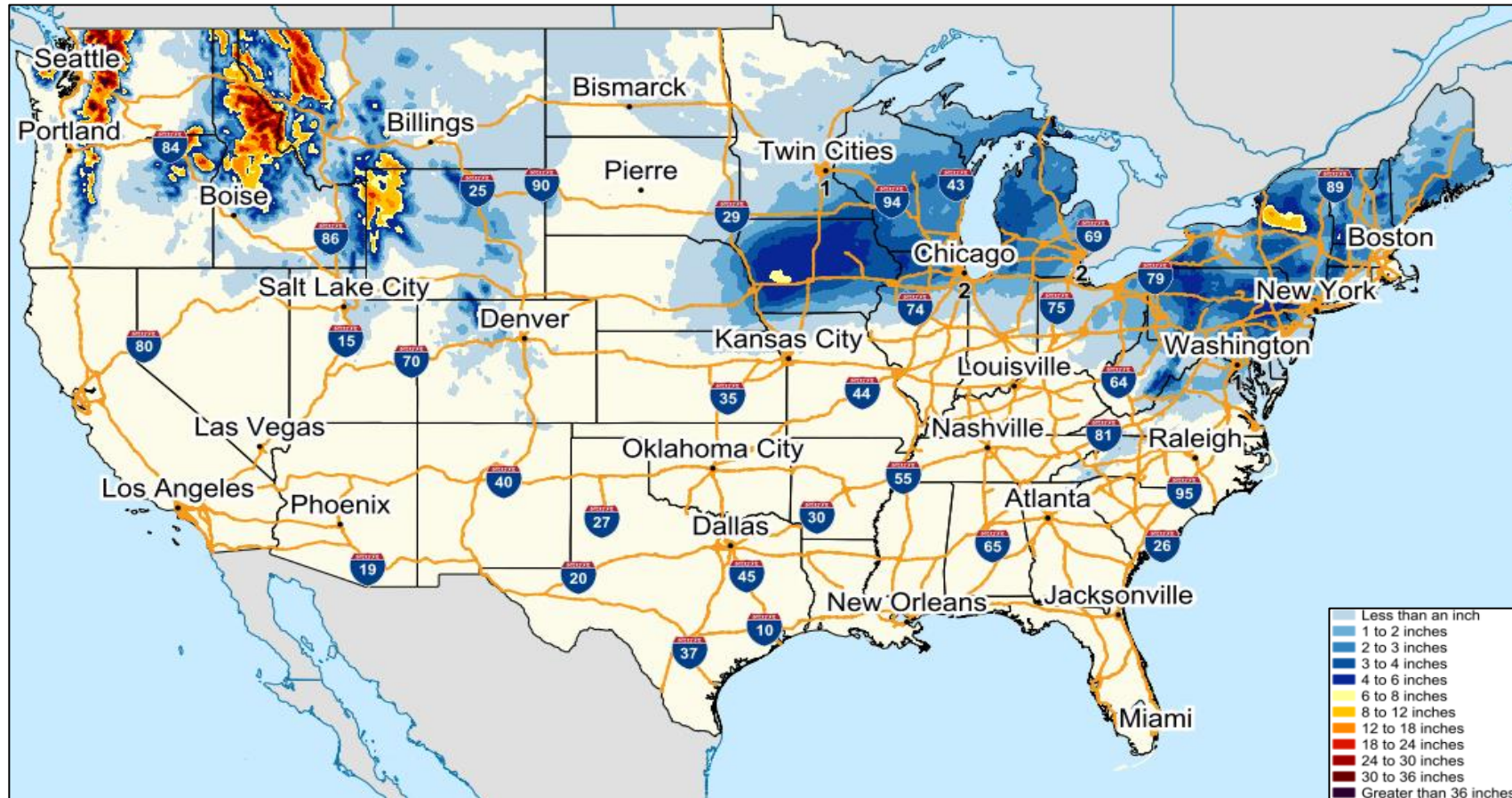
# National Weather Forecast



FEMA

National Watch Center

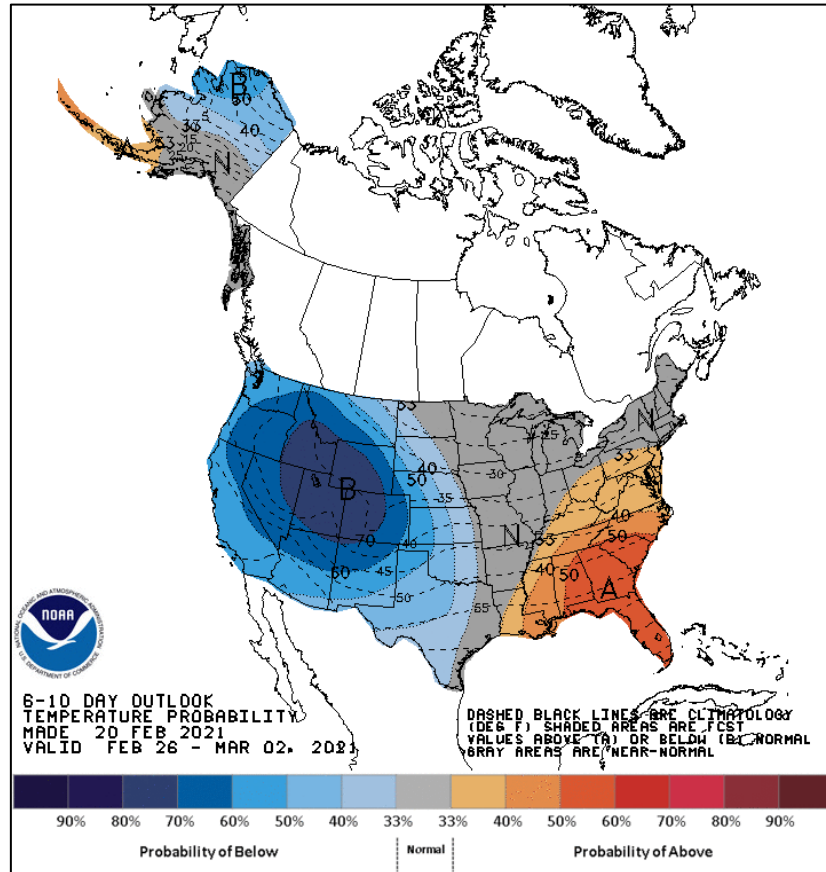
# Forecast Snowfall



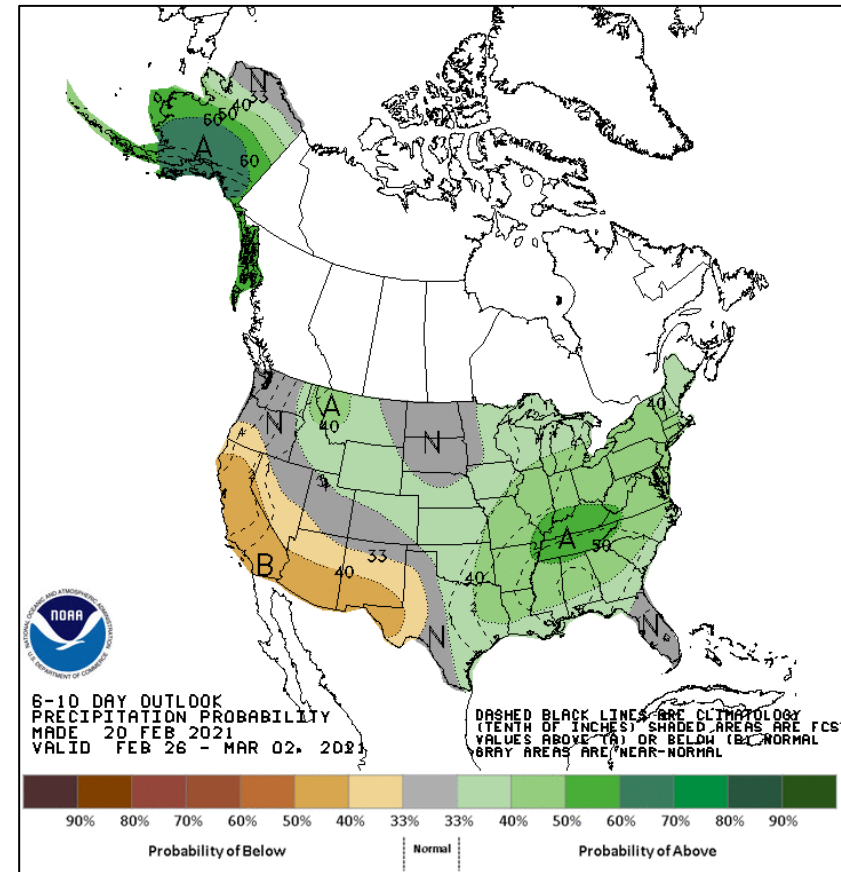
FEMA



# Long Range Outlooks – Feb 26–Mar 2



6-10 Day Temperature Probability



6-10 Day Precipitation Probability



FEMA

National Watch Center



# Joint Preliminary Damage Assessments

Region	State / Location	Event	IA	Number of Counties		Start – End
			PA	Requested	Complete	
X	WA	Severe Winter Storms Dec 28, 2020 to Jan 16, 2021	IA	0	0	N/A
			PA	16	16 (+16)	2/11 – 2/20



FEMA

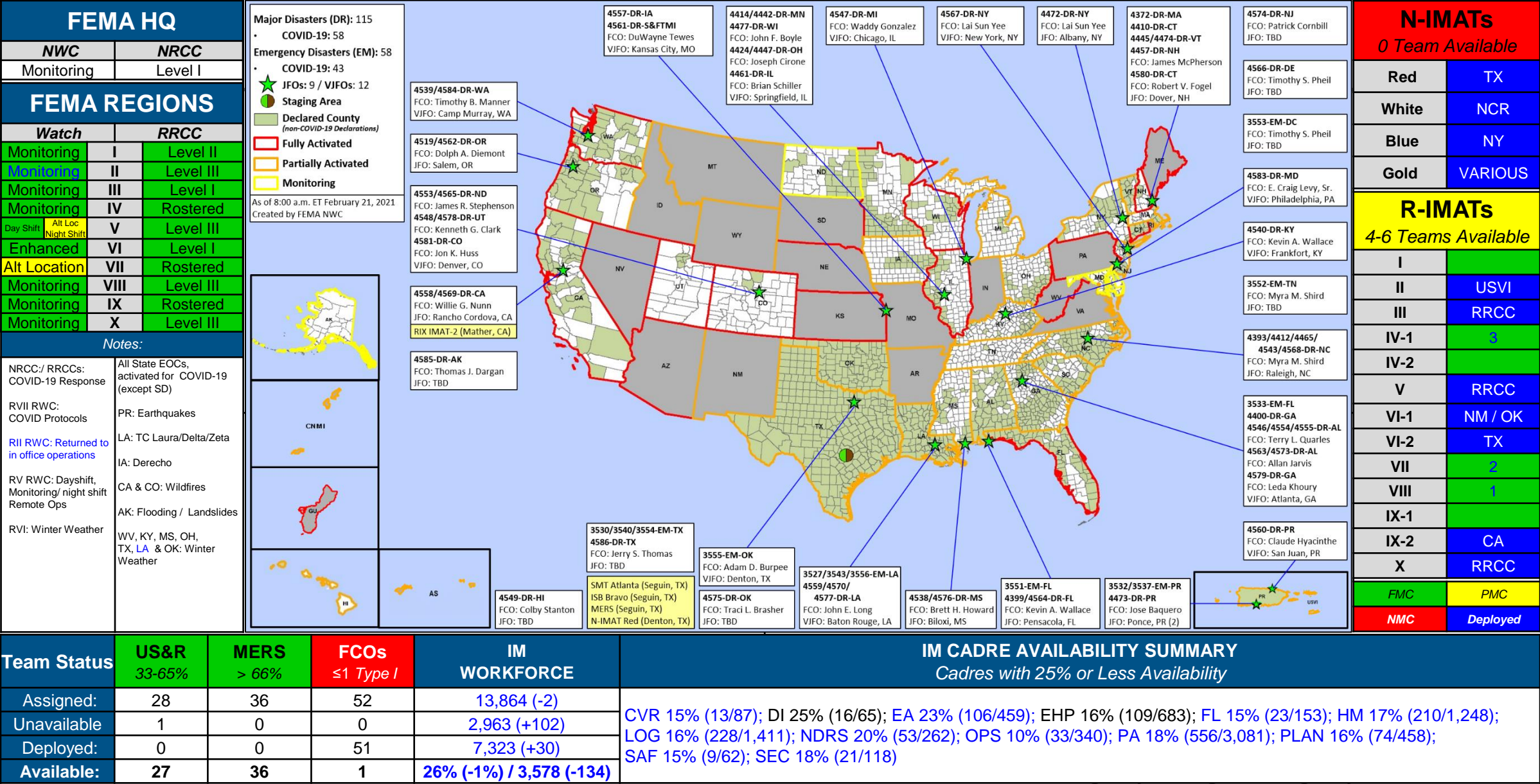
# Declaration Requests in Process – 5

State / Tribe / Territory – Incident Description	Type	IA	PA	HM	Requested
NC – Tropical Storm Eta	DR		X	X	2/9
VA – 59 <sup>th</sup> Presidential Inauguration (Appeal)	EM		X		2/9
AL – Tornado	DR	X		X	2/11
MD – 59 <sup>th</sup> Presidential Inauguration (Appeal)	EM		X		2/12
ID – Severe Storm and Straight-line Winds	DR		X	X	2/11



**FEMA**

# FEMA Common Operating Picture





# FEMA

Helping people before, during, and after disasters.

*[Click here to subscribe to this briefing.](#)*