

FEMA National Watch Center

Daily Operations Briefing

Thursday, November 18, 2021

8:30 a.m. ET



FEMA

National Current Ops / Monitoring

New Significant Incidents / Ongoing Ops

- Flooding – Washington State (Final)

Hazard Monitoring

- Freezing rain possible – Northwest & Northeast
- Snow possible – Northern Rockies, Upper Mississippi Valley, & Great Lakes

Disaster Declaration Activity

- None

Event Monitoring

- None



FEMA

Flooding – Washington State (FINAL)

Current Situation: On November 12, heavy rain and wind from a Pacific Ocean atmospheric river flooding event produced widespread flooding and storm damage in western Washington. Flooding crested on November 16 & 17 and rivers are expected to recede into next week with improving weather conditions.

Lifeline Impacts:

Safety & Security:

- One person missing in Whatcom County; local search and rescue ongoing; no fatalities reported
- Voluntary evacuations in effect for portions of Skagit County (pop. 129k)

Food, Water, Shelter:

- 4 Shelters / 44 occupants throughout the impacted counties and tribes (*Midnight Shelter count as of 7:00 a.m.*)
- Shortage of food and water reported in affected counties; Clallam County over 1k people without water

Health & Medical: Attempting to deliver vaccines/medication to 2 hospitals in the city of Forks (pop. 3.8k) via Life Flight/DART (Disaster Air Relief Team)

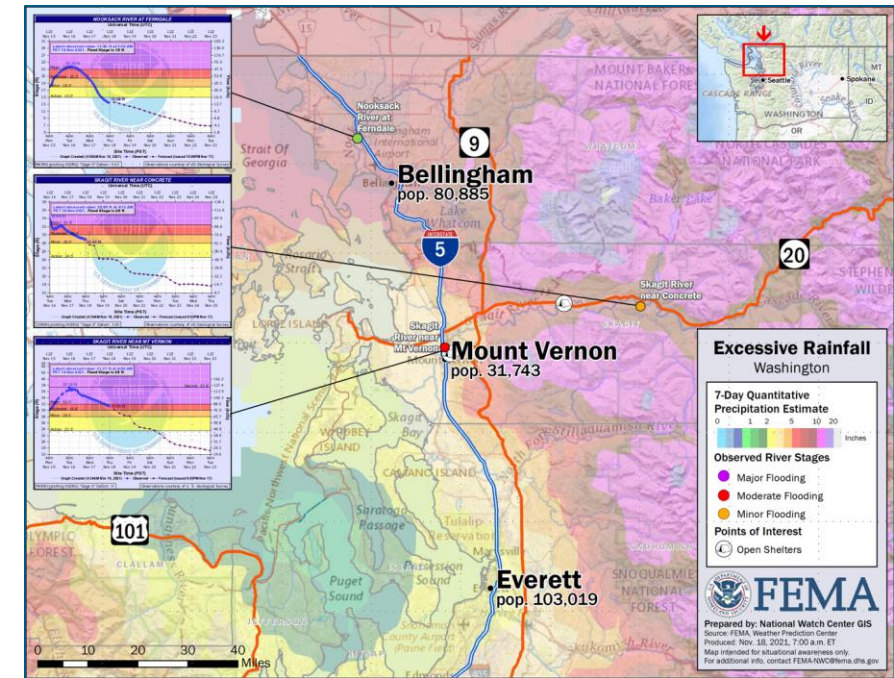
Energy: (*Eagle-I as of 7:30 a.m.*)

- Power Outages: 1k (0.04%) statewide, 794 (0.57%) outages in Island County
- Clallam County / Makah Nation experiencing fuel shortages, rationing fuel for emergency vehicles only

Transportation:

- Makah Nation (pop.1,2k) isolated due to road closures
- US 101 remains closed in both directions at the Elwha River Bridge in Clallam County; detours available

Hazardous Materials: Burlington Northern Santa Fe freight train (est. 12 cars) derailed while stationary in Sumas (Whatcom County); due to a collapsed railbed; train cannot be righted until the water recedes and hazmat potential being assessed



State /Local Response:

- Governor declared a Severe Weather State of Emergency for 14 counties; National Guard activated
- WA EOC at Full Activation (Flooding and COVID-19)

FEMA / Federal Response:

- NWC, Region X, & FEMA WA Integration Team monitoring
- USCG & USACE (levees) responding within their authorities
- No requests for FEMA assistance

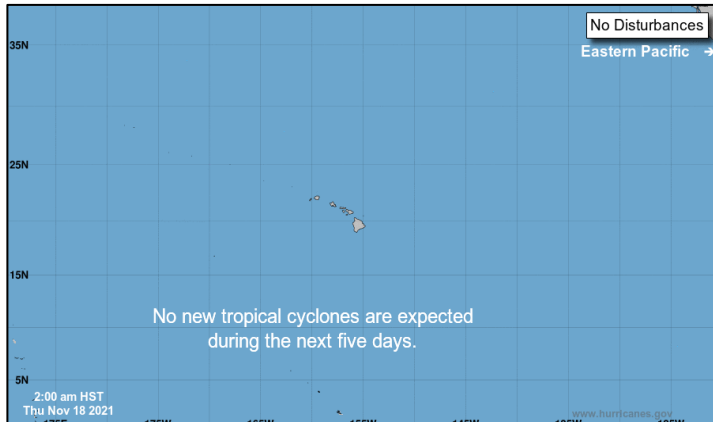


FEMA

National Watch Center

Tropical Outlook – Five Day

Central Pacific



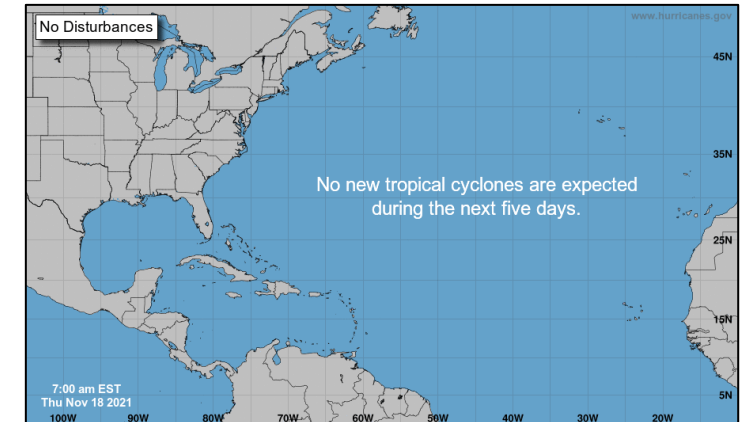
- No significant activity

Eastern Pacific



- No significant activity

Atlantic

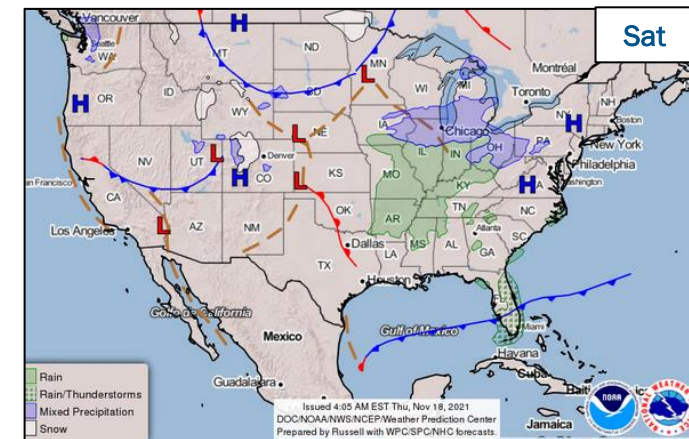
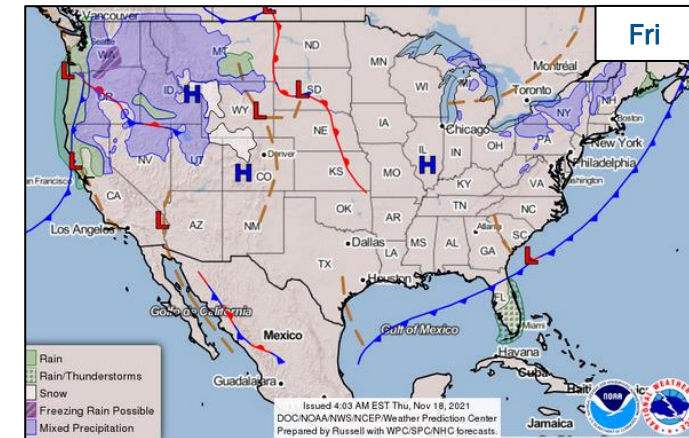
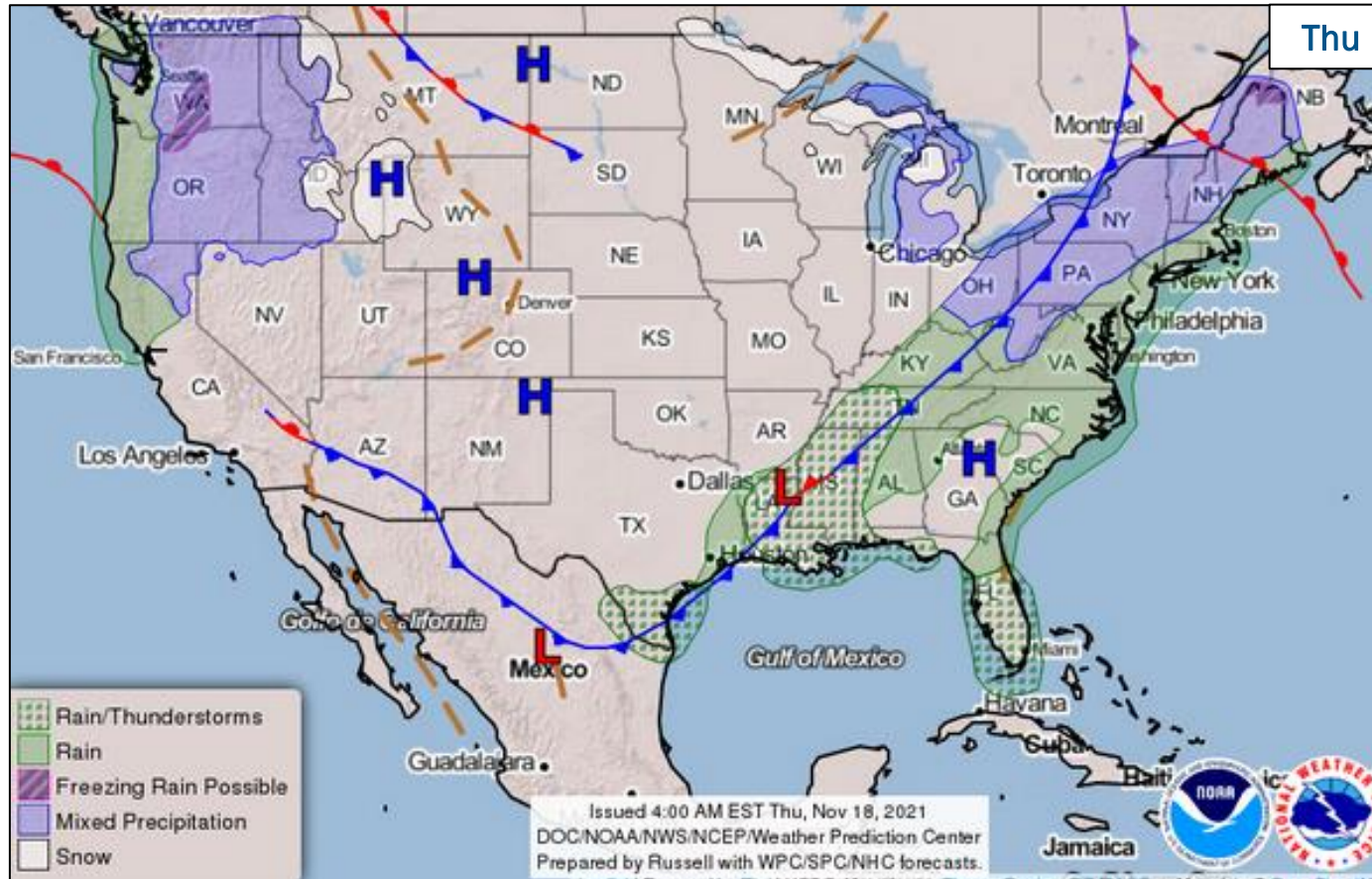


- No significant activity



FEMA

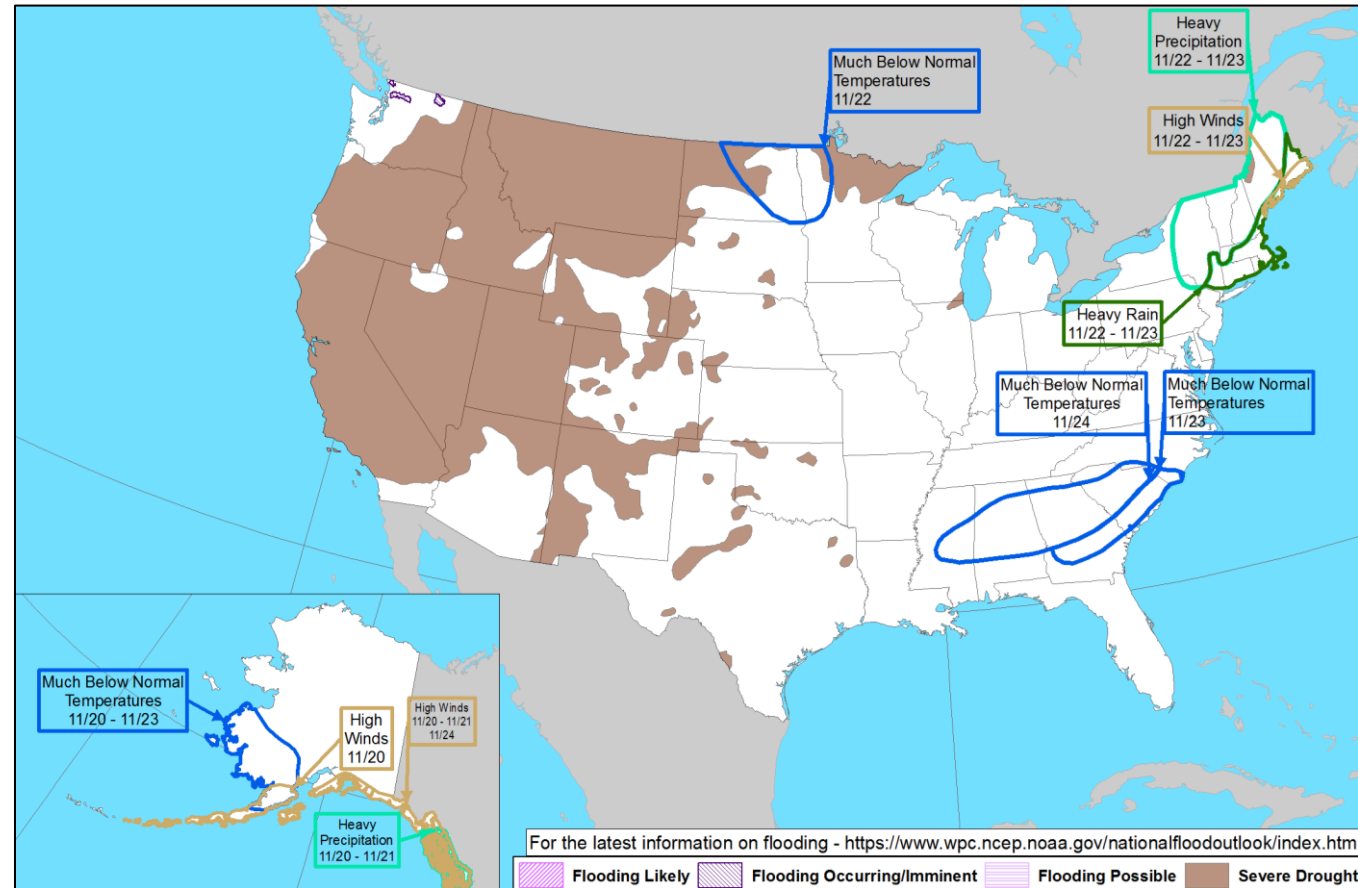
National Weather Forecast



FEMA

National Watch Center

Hazards Outlook – Nov 20-24



FEMA

Joint Preliminary Damage Assessments

Region	State / Location	Incident	IA	Number of Counties		Start – End
			PA	Requested	Complete	
I	RI	Ida Sep 1-2	IA	0	0	N/A
			PA	1	0	10/12 – TBD
	ME	Coastal Storm Oct 30-31	IA	0	0	N/A
			PA	4	0	11/8 – TBD



FEMA

FEMA Common Operating Picture

FEMA HQ

NWC	NRCC
Monitoring	Level III

FEMA REGIONS

Watch	RRCC
Monitoring	I Level III
Monitoring	II Rostered
Monitoring	III Rostered
Monitoring	IV Rostered
Monitoring Alt Loc	V Level III
Monitoring	VI Level III
Alt Location	VII Rostered
Monitoring	VIII Rostered
Monitoring	IX Rostered
Monitoring	X Level III

Notes:

NRCC: COVID-19

RRCCs: COVID-19

RV RWC: Day shift, Monitoring/Night shift, remote operations

RVII RWC: COVID-19 Protocols

STATE EOCs:

NJ & NY: Ida

PR: Earthquakes

CO: Mudslides, Drought, and Afghan Repatriation

WA: Flooding

Major Disasters (DR): 68

Emergency Disasters (EM): 13

- ★ JFOs: 15 / VJFOs: 11
- Staging Area
- Declared County (non-COVID-19 Declarations)
- Fully Activated
- Partially Activated
- Monitoring

As of 8:00 a.m. ET November 18, 2021
Created by FEMA NWC

N-IMATs

2-4 Teams Available

Red	
White	Training
Blue	
Gold	

R-IMATs

≥ 7 Teams Available

I	CT
II	PR
III	PA
IV-1	
IV-2	
V	2
VI-1	
VI-2	
VII	1
VIII	
IX-1	
IX-2	CA
X	3
FMC	PMC
NMC	Deployed

Team Status

	US&R ≤66%	MERS >66%	FCOs = 2 Type I	IM WORKFORCE
Assigned:	28	36	58	14,416 (-3)
Unavailable:	9	0	0	3,223 (+25)
Deployed:	0	0	49 (-2) (27 FCOR)	7,055 (-62)
Available:	19	36	9 (+2)	29% (+1) / 4,138 (+34)

IM CADRE AVAILABILITY SUMMARY

Cadres with 25% or Less Availability

Civil Rights: 18% (20/111); **External Affairs:** 19% (99/531); **Field Leadership:** 14% (21/150); **Hazard Mitigation:** 16% (214/1,356); **Human Resources:** 17% (33/194); **Operations:** 22% (81/373); **Public Assistance:** 20% (538/2,718); **Planning:** 15% (67/461)



FEMA

Helping people before, during, and after disasters.



Scan to subscribe to this briefing.