

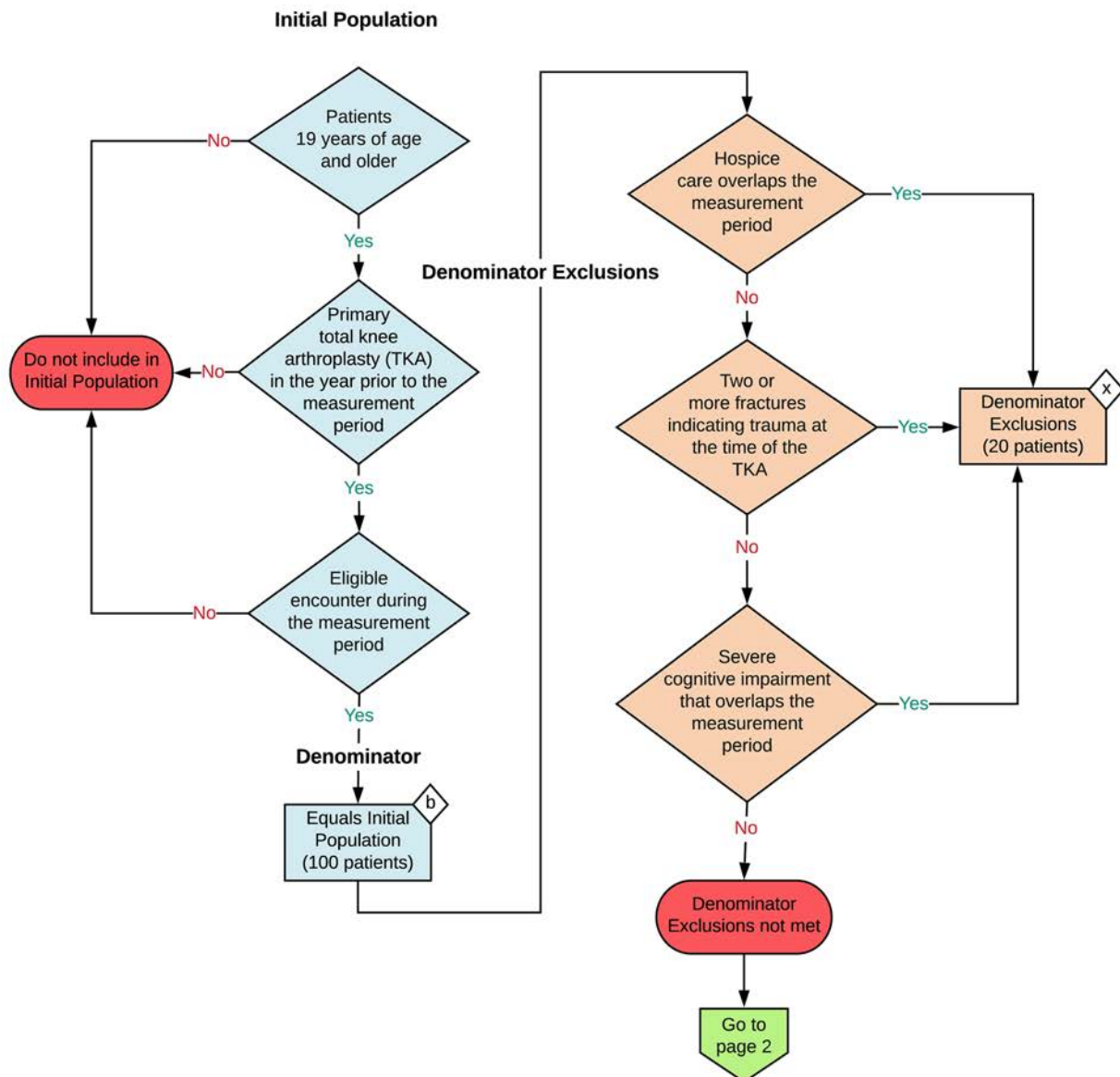
2020 eCQM Flow eCQM Identifier: CMS66v8

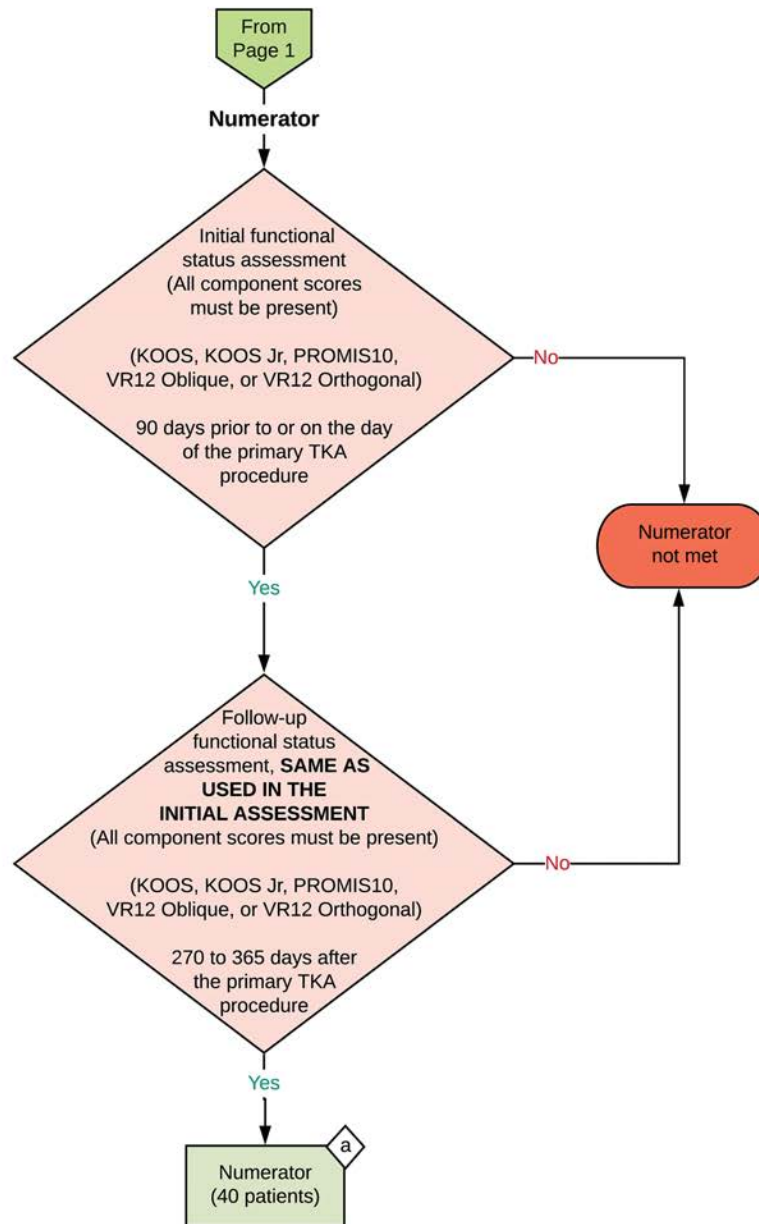
NOTE: This flow diagram represents an overview of population criteria requirements. **Refer to the eCQM specification for a complete list of data elements included in this measure and required for submission.**

Functional Status Assessment for Total Knee Replacement

Percentage of patients 18 years of age and older who received an elective primary total knee arthroplasty (TKA) and completed a functional status assessment within 90 days prior to the surgery and in the 270-365 days after the surgery

This eCQM is a patient-based measure





Sample Calculation

Performance Rate =

Numerator (a = 40 patients)

Denominator (b = 100 patients) - Denominator Exclusions (x = 20 patients)

$$= \frac{40}{80} = 50\%$$

eCQM Identifier: CMS66v8**eCQM Title: Functional Status Assessment for Total Knee Replacement**

NOTE: This flow diagram represents an overview of population criteria requirements. Refer to the eCQM specification for a complete list of data elements included in this measure and required for submission.

Description: Percentage of patients 18 years of age and older who received an elective primary total knee arthroplasty (TKA) and completed a functional status assessment within 90 days prior to the surgery and in the 270-365 days after the surgery.

This eCQM is a patient-based measure.

eCQM Flow Narrative**Initial Population**

Start by identifying the Initial Population, which includes patients 19 years of age and older with a primary total knee arthroplasty (TKA) in the year prior to the measurement period and an eligible encounter during the measurement period.

Denominator

The Denominator equals the Initial Population. In the sample calculation provided at the end of the eCQM flow, the Denominator is equal to 100 patients.

Denominator Exclusions

The Denominator Exclusions criteria identify a subset of the Denominator population by excluding patients whose hospice care overlaps the measurement period, patients with two or more fractures indicating trauma at the time of the TKA, and patients with severe cognitive impairment that overlaps the measurement period. In the sample calculation provided at the end of the eCQM flow, the Denominator Exclusions are equal to 20 patients.

Numerator

The Numerator criteria identify a subset of the Denominator population (that did not meet the Denominator Exclusions criteria) by including patients with an initial functional status assessment with all component scores present (KOOS, KOOS Jr, PROMIS10, VR12 Oblique, or VR12 Orthogonal) 90 days prior to or on the day of the primary TKA procedure and a follow-up functional status assessment, same as used in the initial assessment with all component scores present (KOOS, KOOS Jr, PROMIS10, VR12 Oblique, or VR12 Orthogonal), 270 to 365 days after the primary TKA procedure. In the sample calculation provided at the end of the eCQM flow, the Numerator is equal to 40 patients.

Sample Calculation

A sample calculation is provided to help determine how the measure performance rate is derived. The measure performance rate is calculated by dividing the Numerator (total equals 40 patients) by the difference between the Denominator (total equals 100 patients) and the Denominator Exclusions (total equals 20 patients), which is equal to a score of 50 percent.