

2020 eCQM Flow
eCQM Identifier: CMS124v8

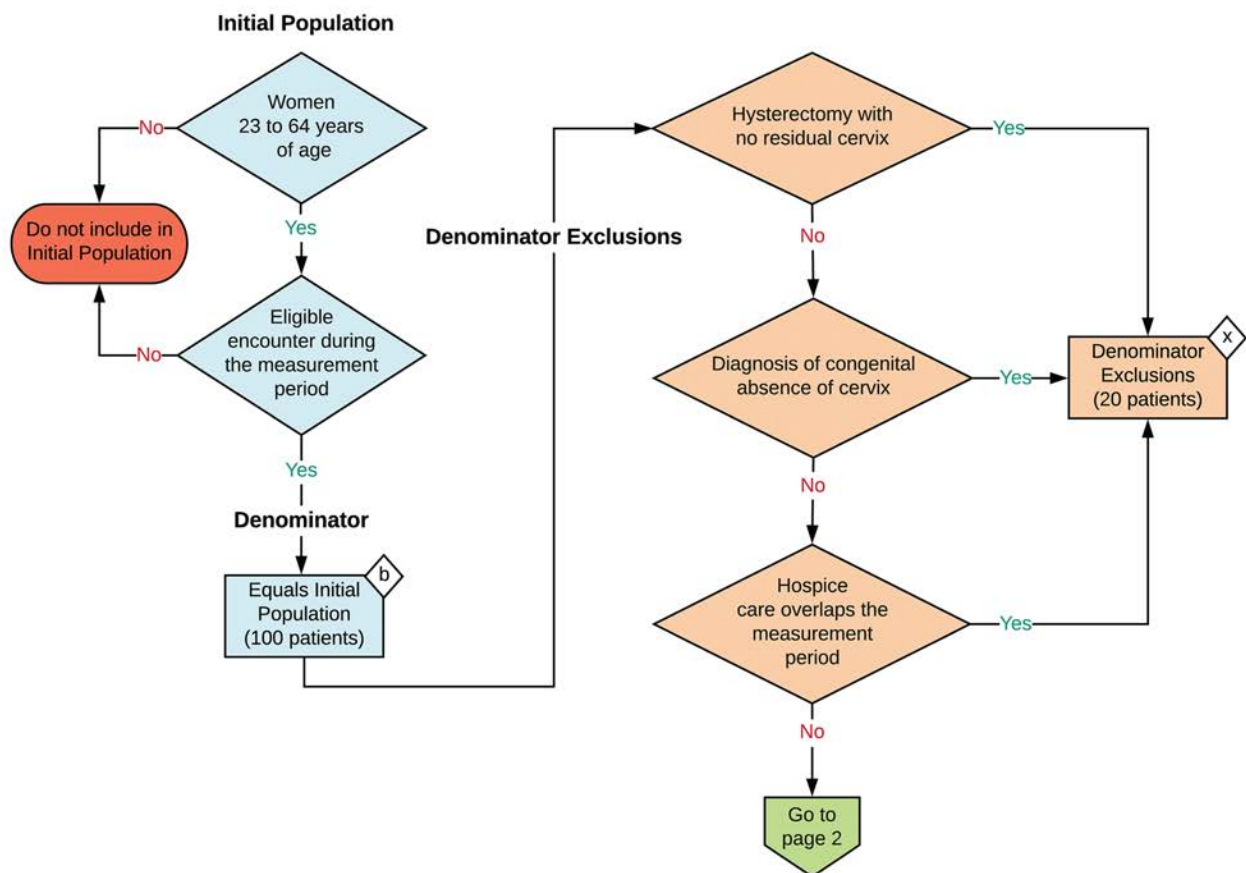
NOTE: This flow diagram represents an overview of population criteria requirements. **Refer to the eCQM specification for a complete list of data elements included in this measure and required for submission.**

Cervical Cancer Screening

Percentage of women 21-64 years of age who were screened for cervical cancer using either of the following criteria:

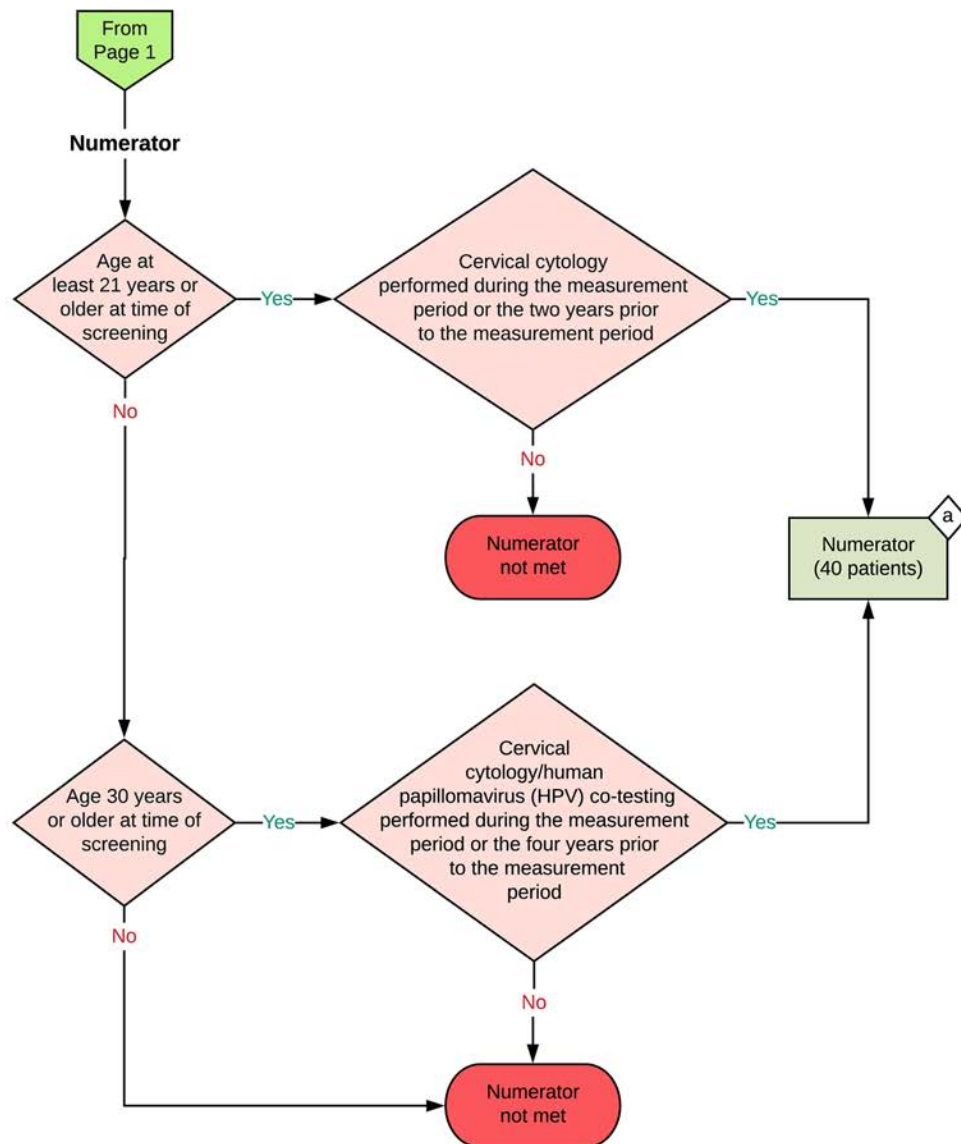
- * Women age 21-64 who had cervical cytology performed every 3 years
- * Women age 30-64 who had cervical cytology/human papillomavirus (HPV) co-testing performed every 5 years

This eCQM is a patient-based measure



2020 eCQM Flow
eCQM Identifier: CMS124v8

Cervical Cancer Screening



Sample Calculation

Performance Rate =

Numerator (a = 40 patients)

Denominator (b = 100 patients) - Denominator Exclusions (x = 20 patients)

$$= \frac{40}{80} = 50\%$$

eCQM Identifier: CMS124v8
eCQM Title: Cervical Cancer Screening

NOTE: This flow diagram represents an overview of population criteria requirements. Refer to the eCQM specification for a complete list of data elements included in this measure and required for submission.

Description: Percentage of women 21 to 64 years of age who were screened for cervical cancer using either of the following criteria:

- Women age 21 to 64 who had cervical cytology performed every 3 years.
- Women age 30 to 64 who had cervical cytology/human papillomavirus (HPV) co-testing performed every 5 years.

This eCQM is a patient-based measure.

eCQM Flow Narrative

Initial Population

Start by identifying the Initial Population, which includes women 23 to 64 years of age with an eligible encounter during the measurement period.

Denominator

The Denominator equals the Initial Population. In the sample calculation provided at the end of the eCQM flow, the Denominator is equal to 100 patients.

Denominator Exclusions

The Denominator Exclusions criteria identify a subset of the Denominator population by excluding women who had a hysterectomy with no residual cervix, had a diagnosis of congenital absence of cervix, or whose hospice care overlaps the measurement period. In the sample calculation provided at the end of the eCQM flow, the Denominator Exclusions are equal to 20 patients.

Numerator

The Numerator criteria identify a subset of the Denominator population (that did not meet the Denominator Exclusions criteria) by including women who had cervical cytology/human papillomavirus (HPV) co-testing performed during the measurement period or the four years prior to the measurement period (for women who are at least 30 years old at the time of screening), or women who had cervical cytology performed during the measurement period or the two years prior to the measurement period (for women who are at least 21 years old at the time of screening). In the sample calculation provided at the end of the eCQM flow, the Numerator is equal to 40 patients.

Sample Calculation

A sample calculation is provided to help determine how the measure performance rate is derived. The measure performance rate is calculated by dividing the Numerator (total equals 40 patients) by the difference between the Denominator (total equals 100 patients) and the Denominator Exclusions (total equals 20 patients), which is equal to a score of 50 percent.