



Shropshire, Telford & Wrekin
Integrated Care System

Learning Disability and Autism Programme Draft Vision

April 2021

Contents

Item	Page
Background and Questions	2
Draft Learning Disability and Autism Vision	3
Draft Learning Disability and Autism Vision - Easy Read Format	4



Background and Questions

The Shropshire, Telford and Wrekin Learning Disability and Autism Programme is developing its overarching vision and principles. This is important as it provides focus, sets direction and unites everybody with where we want to get to as a local health and care system. It also sets out what we want to achieve for and with people living with a learning disability and/ or autism.

This vision aims to align our work across health and social care in Shropshire, Telford and Wrekin. Once developed it will provide a foundation for detailed strategies and plans where these are not yet in place or need to be updated.

How has this been developed so far?

The draft vision has been developed using:

- Feedback provided to recent strategy work for both learning disabilities and autism, for adults and children, and across health and social care in Shropshire, Telford and Wrekin.
- Further feedback gathered directly from people with lived experience, families, carers and professionals.

Have your say

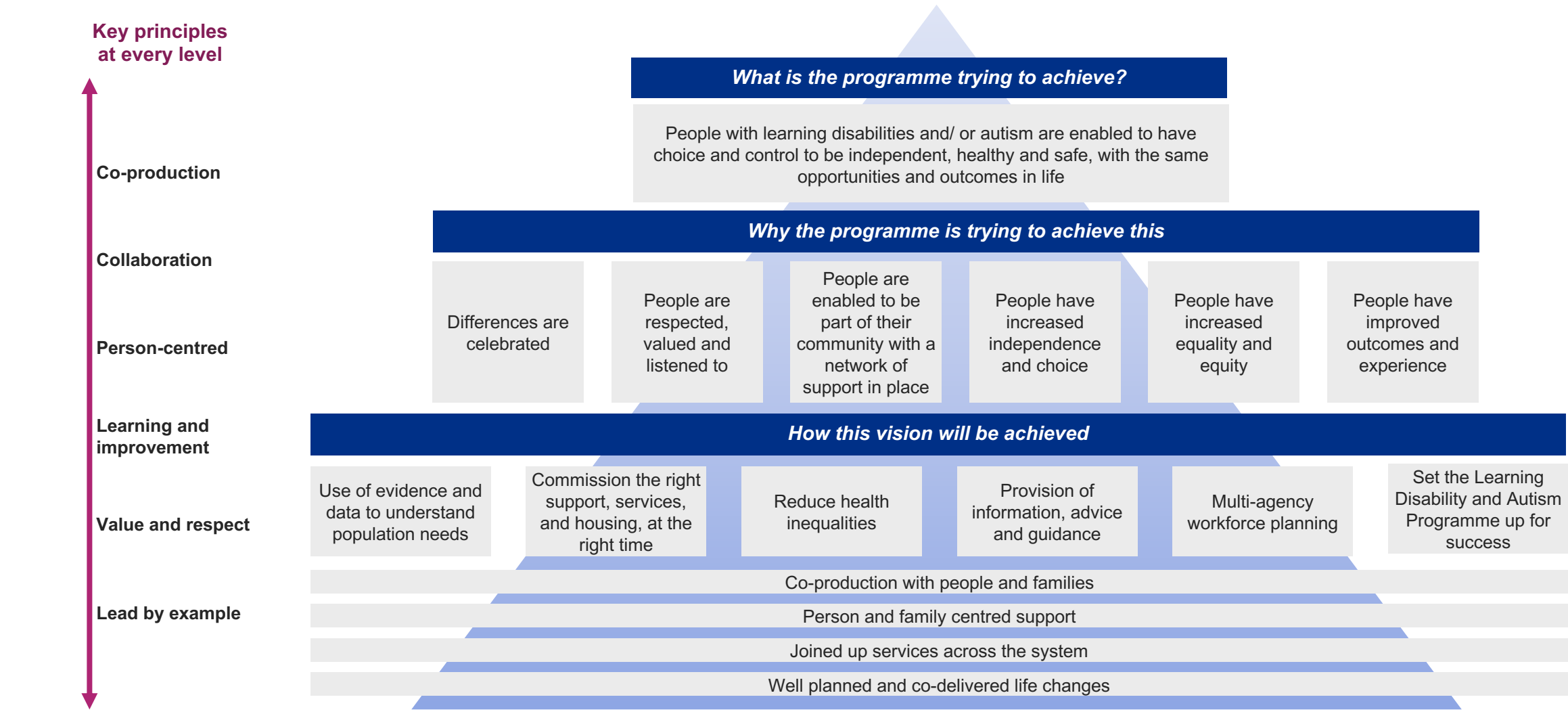
We would now like to hear your views and feedback on the vision and principles to make sure the right information has been captured. To have your say, please review the one page version of the draft vision on page 3, and the easy read version from page 4 and complete our short survey by clicking on the following link <https://www.surveymonkey.co.uk/r/ZQTQDN6>

Survey questions:

1. Please tell us what you think about our draft vision and principles.
2. From your experience, do you think these are the most important areas for the programme to focus on?
3. Is there anything else you think should be included?
4. Do you have any other feedback you would like to provide?



Draft Learning Disability and Autism Vision



Draft Learning Disability and Autism Vision - Easy Read Format

The following pages provide the draft learning disability and autism vision and principles in an easy ready format.



Learning Disability and Autism Vision

The 6 principles

6 important points that together make our **Vision**



Co-production means working together from the start to find good results.

1



Collaboration means team work. Listening to each person's views to find good results.

2





Person-centred means we will work with a person about their needs, wishes and goals.

3



Learning and improvement means we check how we are working and how we can do things better.

4



Value and respect means we think other people's views are important.

5



Lead by example means to encourage people by showing you can do good work.

6



?

What are we trying to do?



People who live with learning disabilities and/ or autism are supported to have choice and control over their lives.

To be independent, healthy and safe, with the same opportunities and outcomes as everyone else.

We will know this when people say there are ...



Good life changes



Joined up services

Co-production with people and families



Person and family centred support



Why are we trying to do this?

Being different is good.



People are respected, valued and listened to.



People are supported to be part of their community.



People have more independence and choice.



People are included and treated as equals.



People have better outcomes and experiences.



How will this vision be done?

Use information to understand people's needs.



Have the right support and housing at the right time.



Good healthcare for all.



Information, advice and guidance.



Plan for good work teams.



Make sure the changes are done.





Shropshire, Telford & Wrekin

Integrated Care System



made with
photosymbols®

by

