

CATTERICK GARRISON TOWN CENTRE

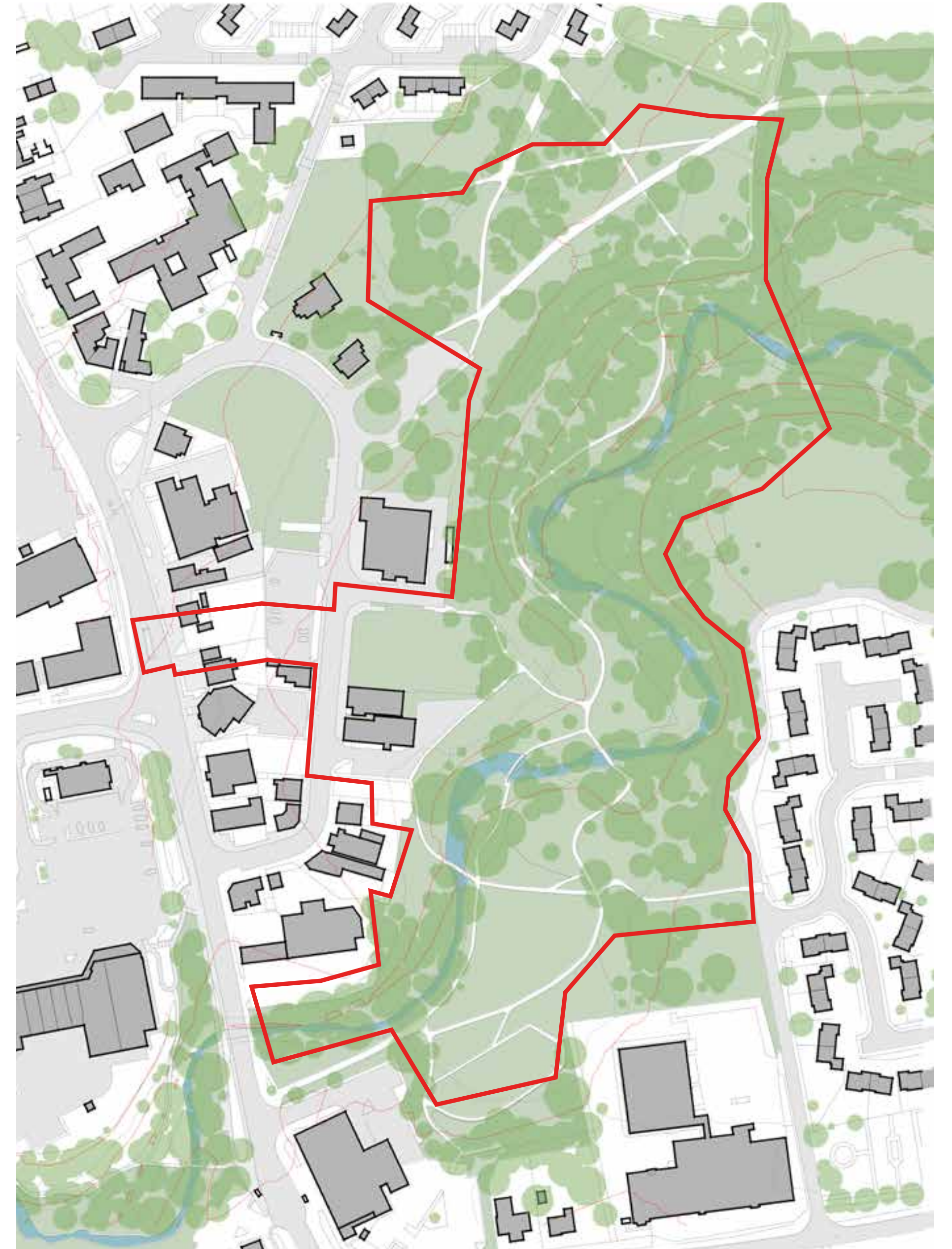
Welcome

We need you to help us decide the detail of what a the town centre could offer. The facilities will include a new town square and community facilities including restaurant spaces and activity and play areas.

These proposals will form part of a funding bid to government. There is an opportunity to make significant improvements to the surrounding neighbourhood following this bid and letting it be a true catalyst for change in town.

Any new facilities that we create will be accessible and inclusive and will be used to increase the number of people using the space throughout the day and evening. This will encourage more people to visit Catterick Garrison, use the town centre and to stay for longer.

The plan to the right shows the area of focus for our proposals including Richmond Road, Shute Road and the neighbouring park.



The red line illustrates the project improvement area



Existing site photographs

CATTERICK GARRISON TOWN CENTRE

Community Square

Refocusing the town centre around a community square.



Water feature in town square



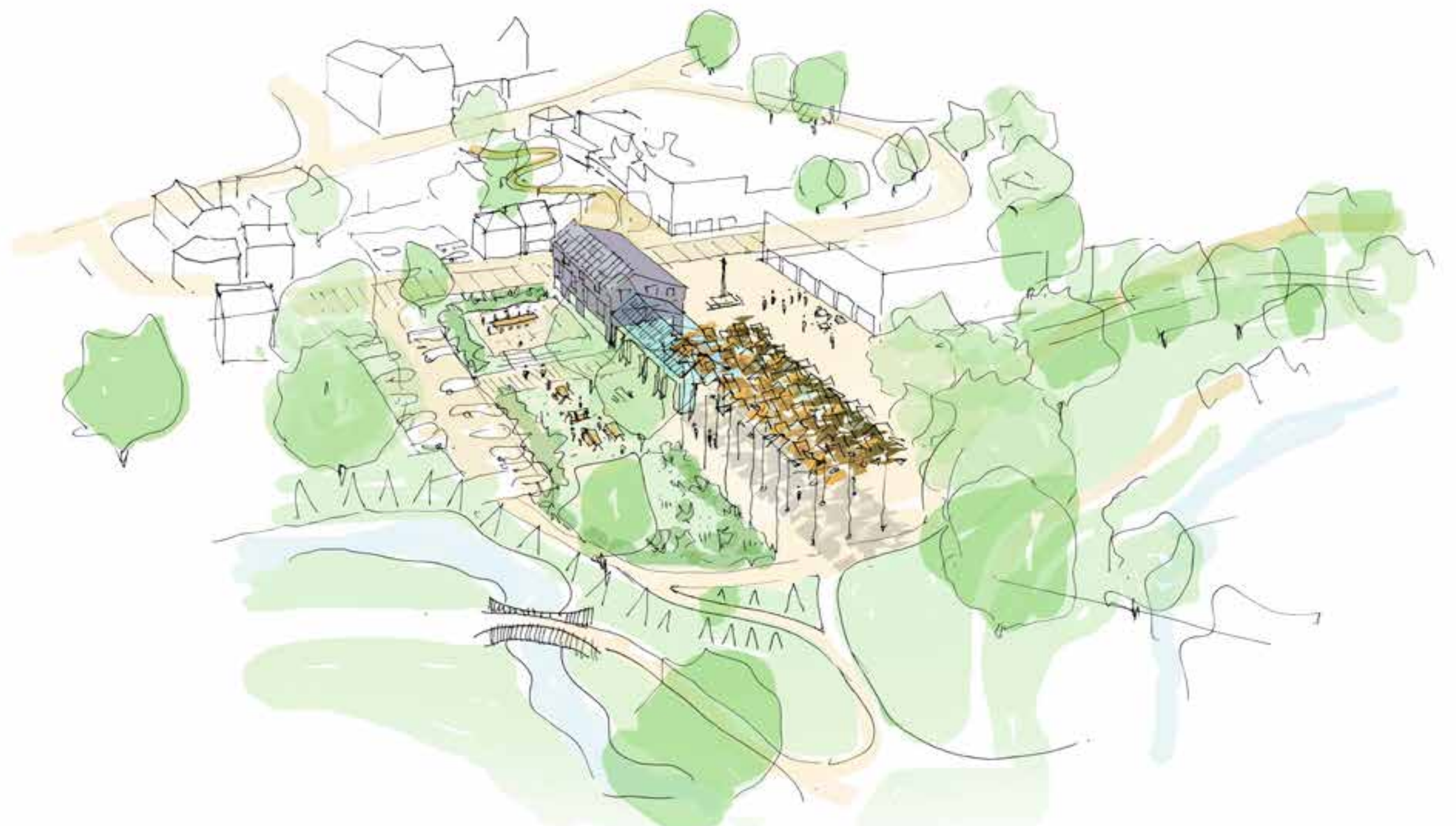
Landscape space



Seating areas



Improved lighting



Landscaping features

CATTERICK GARRISON TOWN CENTRE

Centre for Community

New place to gather and new opportunities for businesses.



Office spaces



Illustrative sketch



Food market



Community kitchen

CATTERICK GARRISON TOWN CENTRE

Vibrant mix of activities and play

Providing spaces that make Catterick a destination.

- Ramped Path
- Small public plaza
- Main square
- Active edge



Ramped path



Informal pocket play zones adjacent to ramped path



Timber play equipment / bound rubber surfacing



Informal activities



Places to meet up with friends



Water / mist play zone with night lighting



Skate park / Skateable areas



Public art displays

CATTERICK GARRISON TOWN CENTRE

Enhancing Coronation Park - potential options



Better seating and recreational spaces



Bike tracks / ramps



Growing area and community garden space



Improved cycling paths



Additional planting



Improved lighting



Improved play areas



Improved walks and peaceful spaces



Outdoor theatre space



Play areas



Places to do exercise or play sports

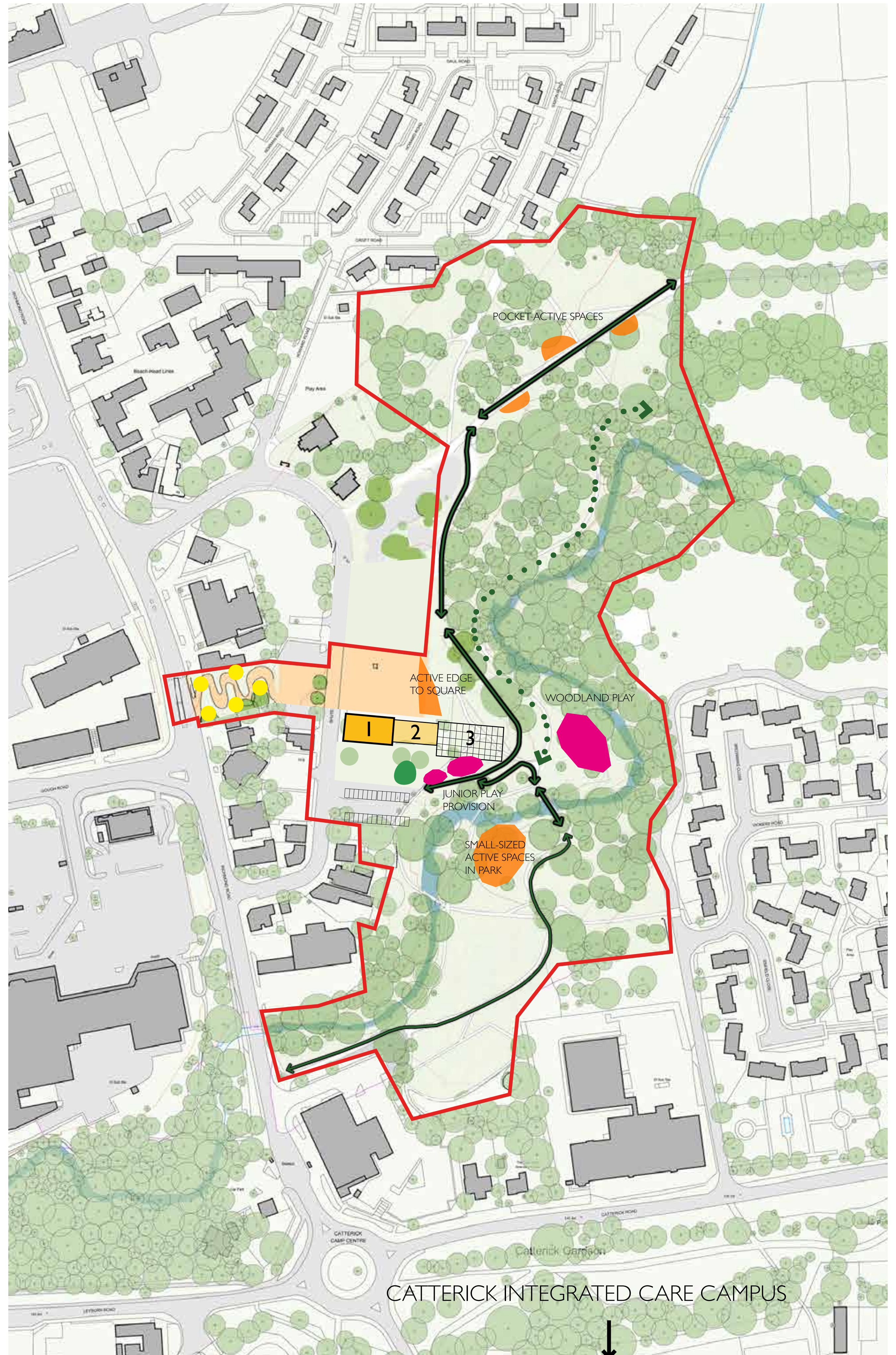


Improved bridges

CATTERICK GARRISON TOWN CENTRE

Project Ideas

- One central building divided into three main parts (from the left):
 1. Enterprise and Innovation Centre
 2. Glazed Pavillion
 3. Shaded Canopy
- Central feature for Catterick, making it a destination
- Opportunity for more developments around the square later on
- Play Spaces
- Playful Interventions
- Active Spaces
- Growing Area and Community Garden Space
- Cycling Routes
- Footpath



CATTERICK GARRISON TOWN CENTRE

Thank you

Your thoughts and views today are appreciated.



Active play areas



Outdoor theatre



Small play features