

3500
11 MAR 2023



https://www.dhs.gov/sites/default/files/ntas/alerts/22_1130_S1_NTAS-Bulletin-508.pdf

This is a list of navigation discrepancies and notices for the Houston Ship Channel (HSC), from the Houston Turning Basin to the Galveston Bay Entrance Channel Lighted Buoy “1B”, as of 0800R today. In accordance with 33 CFR 161.2, participation in the Vessel Traffic Service is mandatory for every power-driven vessel of 40 meters or more in length, every tow vessel of 8 meters or more in length while engaged in towing, and every vessel certificated to carry 50 or more passengers while engaged in trade. Those not required to participate may receive current information by contacting the VTS.

A. AIDS TO NAVIGATION:

Aids to Navigation	Discrepancy	Broadcast Notice To Mariners	Report Date
Galveston Bay South Jetty Light 5A	Missing Day Board	0328-21	19 JUL 21
Galveston Bay Entrance Channel Lighted Buoy 7	Off Station	0139-23	03 MAR 23
Galveston Bay Entrance Channel Range B Rear Light	Destroyed	0050-23	24 JAN 23
Houston Ship Channel Lighted Buoy 18	Dim	0115-23	18 FEB 23
Houston Ship Channel Lighted Buoy 25	Temporarily Relocated	0430-22	31 OCT 22
Rock Pile Lighted Buoy 25A	Off Station	0141-23	05 MAR 23
Lower Galveston Bay Outer Range Rear Light	Extinguished	0157-23	10MAR23
Houston Ship Channel Light 35A	Temporarily Lighted Buoy Relocated	0364-22	13 JUL 22
Houston Ship Channel Light 38	Temporary Lighted Buoy Relocated	0409-22	01 JUN 22
Houston Ship Channel Light 39	Temporary Disestablished	0311-22	01 JUN 22
Houston Ship Channel Light 49	Temporary Lighted Buoy	0635-22	23 NOV 22
Houston Ship Channel Light 50	Temporary Lighted Buoy	0355-22	06 JUL 22
Houston Ship Channel Light 51	Temporary Lighted Buoy Relocated	0362-22	11 JUL 22
Houston Ship Channel Light 52	Temporary Lighted Buoy	0508-22	24 SEP 22
Houston Ship Channel Light 53	Temporary Lighted Buoy	0642-22	19 MAY 22
Houston Ship Channel Light 54	Temporary Lighted Buoy	0284-22	31 OCT 22
Houston Ship Channel Light 55	Temporary Lighted Buoy	0587-22	31 OCT 22
Houston Ship Channel Light 56	Temporary Lighted Buoy	0662-22	06 DEC 22
Houston Ship Channel Light 57	Temporary Lighted Buoy	0033-23	18 JAN 23
Houston Ship Channel Light 59	Temporary Lighted Buoy	0523-22	31 OCT 22
Houston Ship Channel Light 61	Temporary Lighted Buoy	0004-23	04 JAN 23
Houston Ship Channel Light 63	Temporary Lighted Buoy	0044-23	23 JAN 23
Houston Ship Channel Light 65	Temporary Lighted Buoy	0593-22	02 NOV 22
Houston Ship Channel Light 66	Temporary Lighted Buoy	0705-22	31 DEC 22

Houston Ship Channel Light 67	Temporary Lighted Buoy	0576-22	28 OCT 22
Houston Ship Channel Light 68	Temporary Lighted Buoy	0643-22	26 OCT 22
Houston Ship Channel Light 69	Temporary Lighted Buoy	0704-22	30 DEC 22
Houston Ship Channel Light 71	Temporary Lighted Buoy	0113-23	20 FEB 23
Houston Ship Channel Light 74	Temporary Lighted Buoy	0654-22	01 NOV 22
Houston Ship Channel Light 74A	Temporary Disestablished	0654-22	30 NOV 22
Bayport Light 1	Temporary Disestablished	0124-23	24 FEB 23
Bayport Junction Light B	Temporary Lighted Buoy	0696-22	16 DEC 22
Bayport Light 3	Temporary Lighted Buoy	N/A	21 FEB 23
Bayport Light 4	DEST WOS	0574-22	27 OCT 22
Bayport Light 5	Temporary Lighted Buoy	0116-23	18 FEB 23
Bayport Light 6	Temporary Lighted Buoy	0106-23	12 FEB 22
Bayport Light 7	Temporary Lighted Buoy	0117-23	18 FEB 23
Bayport Light 9	Temporary Lighted Buoy	0099-23	14 FEB 22
Upper Morgan's Point Inbound Range Front Light	Extinguished	0125-23	31 JAN 23
Houston Ship Channel Light 103	Temporary Lighted Buoy	0051-23	25 JAN 23
Houston Ship Channel Light 112B	Destroyed	0138-23	03 MAR 23
Houston Ship Channel Light 113	Temporarily Lighted Buoy	0694-22	15 DEC 22
Houston Ship Channel Light 114A	Temporary Lighted Buoy	0031-23	23 JAN 23
Houston Ship Channel Light 115	Missing	0122-23	23 FEB 23
Houston Ship Channel Light 116	Temporary Lighted Buoy	0039-23	24 JAN 23
Houston Ship Channel Light 126	Temporarily Lighted Buoy	0018-23	12 JAN 23
Houston Ship Channel Security Zone Marker 2	Destroyed	0156-21	02 APR 21
Texas City Light 5	Temporary Lighted Buoy	0617-22	17 NOV 22
Texas City Light 10	Temporary Lighted Buoy	0645-22	26 NOV 22
Galveston Freeport Cutoff Channel Buoy 3	Off Station	0136-23	03 MAR 23
Galveston Freeport Cutoff Channel Buoy 5	Missing	0137-23	03 MAR 23

B. CHANNEL OBSTRUCTION REQUESTS

DATE/TIME	CAT	TYPE	LOCATION	STATUS
MARCH 2023	II	TRAFFIC MEASURES FOR TOW VESSELS	TX CITY CHANNEL / ICW INTERSECTION MM 350.5	TENTATIVE
13 MAR 0900-1300	I	DREDGE PIPE REMOVAL	BAYPORT LT 4 / 6	TENTATIVE
17 MAR	I	DREDGE PIPE INSTALL	T AND T SALVAGE TO TEXAS A&M	TENTATIVE
20 MAR 0800-1200	I	DREDGE PIPE INSTALL	TX CITY CHANNEL / ICW INTERSECTION MM 350.5	TENTATIVE

- DREDGE MCCASKILL** is working in the barge lane between Bayport Ship Channel Lights 4 and 6. Request 30-minute notice for Bayport traffic. VTS recommends wake and surge considerations. STBY 13/11/71 Dredge McCaskill 985-991-9051.
- DREDGE AVALON** is working in the outbound barge lane near Houston Ship Channel Lights 75. Request no meeting/overtaking & wake and surge considerations from ships. The outbound barge lane is closed near the dredge. STBY VHF 13/81. Avalon (562)786-0434. Through approximately Feb 21 to Apr 16 2023, scows will be pushed directly from the **DB AVALON** to the San Leon oyster mitigation

site located at 29d 31.602000' N, 094d 57.52920' W. Commencing Feb 17, 2023, through April 16, 2023, the scows will transit the barge lane, where possible, to the vicinity of light 45 to be transported to the Dollar Reef oyster mitigation site located at 29d 26.899043' N, 094d 3.128969' W.

3. **DREDGE KING FISHER** is working in the Texas City Channel near Light 7. Request 45 minutes from ships along with wake and surge considerations, and 15-minute notice from tows. STBY 13. **The Texas City Cutoff Channel is currently closed to all traffic due to floating pipeline.** Cell: 361-487-6470.
4. **DREDGE GLENN EDWARDS** hopper dredge currently dredging the shoaling near Houston Ship Channel Lighted Buoy 11. They are not asking for any requests or considerations. Working Channel: VHF 66.
5. **BOLIVAR DIRECTIVE: VESSEL TRAFFIC SERVICE HOUSTON/GALVESTON DIRECTS:** No meeting or overtaking between Bolivar Light 20 and Bolivar Light 15A.
6. **COMMERCIAL FISHING VESSELS:** Mariners should anticipate multiple commercial fishing vessels (CFV) working in the Houston Ship Channel during daylight hours. If erratic movements are noted, or if unable to contact fishing vessels, notify VTS Houston immediately with the name of the CFV. Above Red Fish Bar: working channels VHF 13/71. Below Red Fish Bar: VHF 13/88.

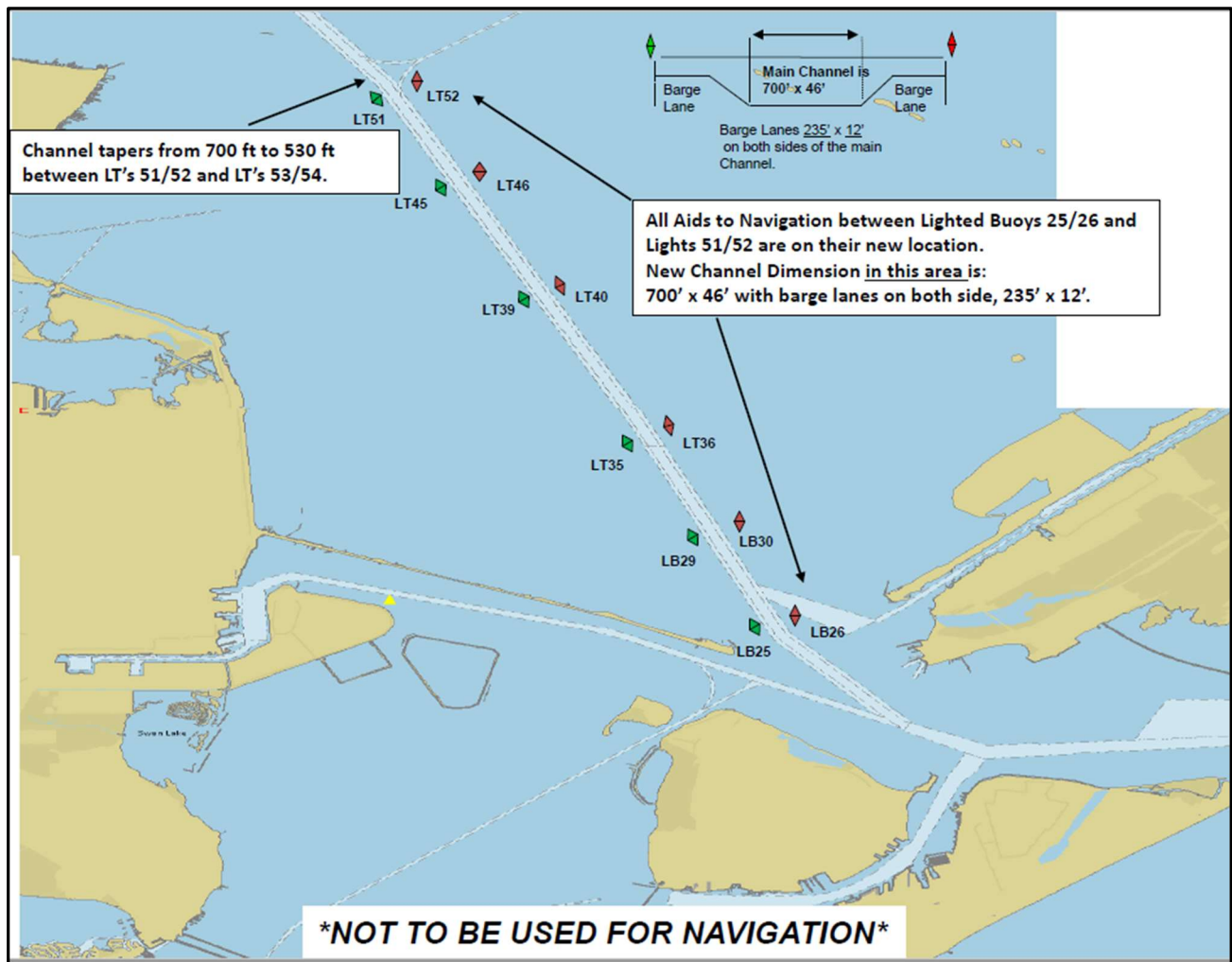
C. NOTES:

1. New Project 11 Channel dimensions are in effect for a section of the Houston Ship Channel from: Lighted Buoys 25/26 to Lights 51/52. The main channel is 700 feet wide by 46 feet deep with barge lanes on either side of 235 feet wide by 12 feet deep. Depth based on Mean Lower Low Water (MLLW).

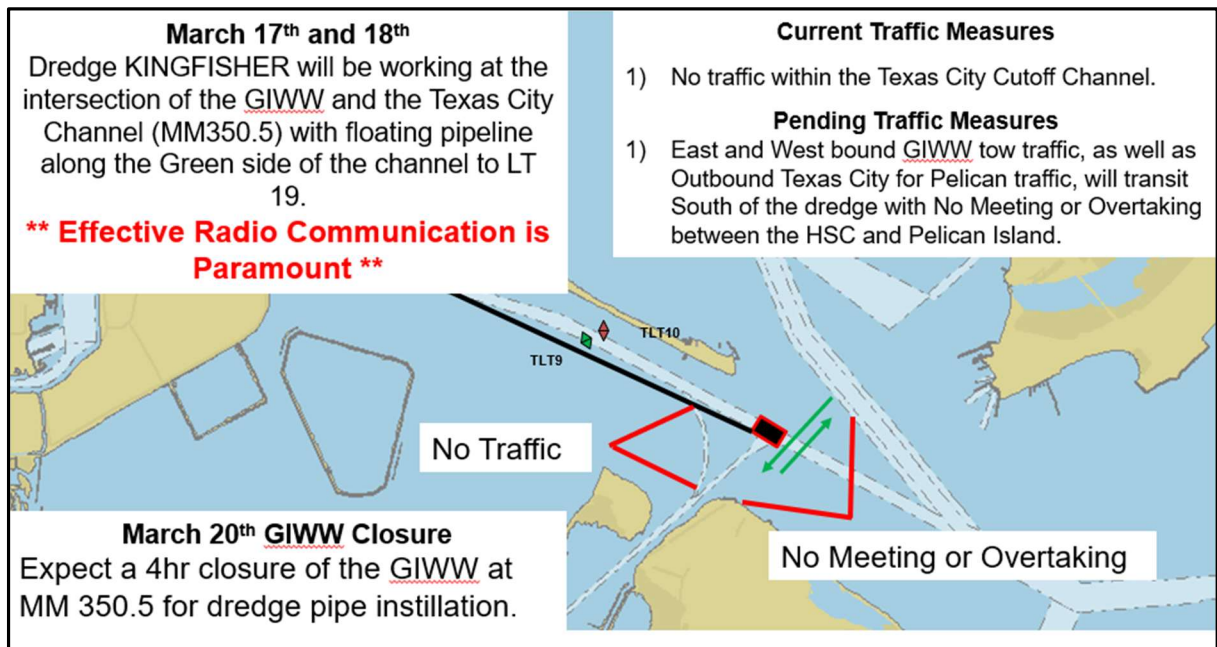
The USCG Aids to Navigation Team has set all aids to navigation from Lighted Buoy 25 to Light 52 according to the new channel dimensions.

The new channel width (700') tapers into the previous channel width (530') between Lights 51/52 and Lights 53/54.

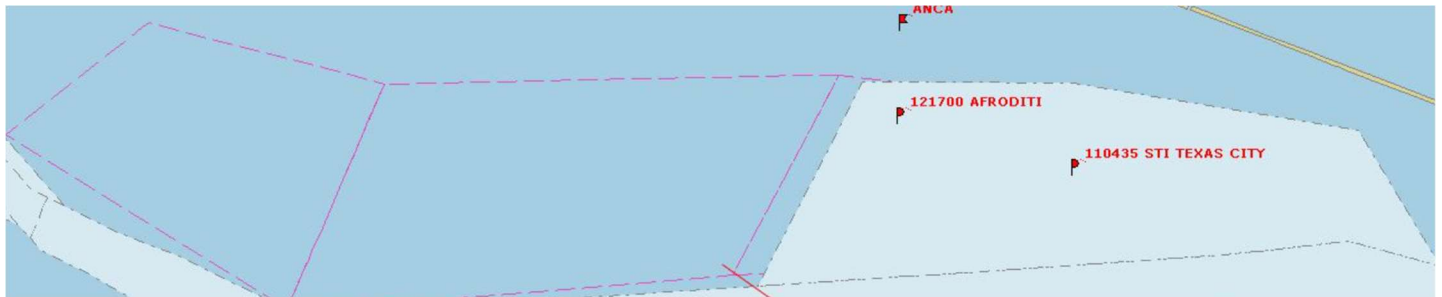
MARINERS ARE ADVISED TO PROCEED WITH VIGILANCE AS THEY ACCUSTOM
THEMSELVES TO THE NEW DIMENSIONS AND NOTE WHERE THE OLD CHANNEL
DIMENSIONS MEET THE NEW CHANNEL DIMENSIONS.



2. The below 'Traffic Measures' are expected to be in effect approximately March 15th and 16th for the Texas City Channel / ICW intersection at MM 350.5 and the Texas City Cutoff Channel to facilitate dredging operations. Prior to this date, dredging operations are expected to affect the use of the Texas City Cutoff Channel as floating pipeline will prevent transits both Inbound and Outbound. VTS will manage this obstruction through coordination with the dredge KINGFISHER and Traffic Summaries to Users. A follow-on CAT I closure of the ICW is expected for March 10th to install dredge pipe.



D. ANCHORAGE MANAGEMENT



For more information, contact the VTS Watch Supervisor at (281) 464-4837