



KENTUCKY

SUMMARY

- As we continue to work with each of you on data quality and data reporting, we will continue to add relevant data to our joint understanding. We greatly appreciate the feedback and we use this to continually improve. This week, we have included the data reported to HHS from your hospitals regarding admissions and next, we will include PPE data reported.
- Kentucky is in the red zone for cases, indicating 101 or more new cases per 100,000 population last week, with the 21st highest rate in the country. Kentucky is in the orange zone for test positivity, indicating a rate between 8.0% and 10.0%, with the 14th highest rate in the country.
- Kentucky has seen stability in new cases and stability in test positivity over the last week.
- The following three counties had the highest number of new cases over the last 3 weeks: 1. Fayette County, 2. Jefferson County, and 3. Warren County. These counties represent 39.4% of new cases in Kentucky.
- 70% of all counties in Kentucky have moderate or high levels of community transmission (yellow, orange, or red zones), with 36% having high levels of community transmission (red zone).
- During the week of Oct 5 - Oct 11, 16% of nursing homes had at least one new resident COVID-19 case, 36% had at least one new staff COVID-19 case, and 5% had at least one new resident COVID-19 death.
- Kentucky had 158 new cases per 100,000 population in the last week, compared to a national average of 117 per 100,000.
- Current staff deployed from the federal government as assets to support the state response are: 1 to support operations activities from FEMA and 13 to support medical activities from VA.
- Between Oct 10 - Oct 16, on average, 153 patients with confirmed COVID-19 and 107 patients with suspected COVID-19 were reported as newly admitted each day to hospitals in Kentucky. An average of greater than 95% of hospitals reported either new confirmed or new suspected COVID patients each day during this period.

RECOMMENDATIONS

- We have included cases, test positivity, and deaths by month in the back of your packet to show the time sequence in Kentucky and the country as a whole. These demonstrate the impact of comprehensive mitigation efforts when implemented effectively and that partial or incomplete mitigation leads to prolonged community spread and increased fatalities.
- Kentucky must continue the strong mitigation efforts statewide. Mitigation efforts should continue to include mask wearing, physical distancing, hand hygiene, avoiding crowds in public and social gatherings in private, and ensuring flu immunizations.
- In red and orange counties, both public and private gatherings should be as small as possible and optimally, not extend beyond immediate family.
- Keep testing levels high across the state, particularly in red and orange counties, to quickly identify positives so they can isolate themselves and prevent ongoing transmission.
- Fully deploy Abbott BinaxNOW tests statewide in sentinel sites and populations; weekly surveillance data will proactively identify emerging hotspots where immediate action should be taken to stop the spread within communities. All antigen tests must be reported with both the number of positive results and total tests conducted; positives must be reported as COVID-19 cases. Repeat testing of individuals as surveillance with confirmation of all positives with nucleic acid testing is the optimal use of antigen tests.
- With nearly 40% of nursing homes reporting at least one COVID-19 positive staff member, work with nursing homes to trace exposures of positive staff to decrease introduction of community transmission to nursing homes.
- Work with rural communities to demonstrate how real the disease is in their communities.
- Ensure university students continue their mitigation behaviors to ensure no further outbreaks on or off campus as symptomatic cases and cases identified through surveillance testing decline.
- Encourage use of retail establishments that are enforcing mitigation efforts.
- Provide specific mitigation messaging to individuals 65 years and older through senior citizen networks.
- Ensure all hospitals have access to antivirals and antibodies and ensure early use as treatment (within 48 hours).
- Specific, detailed guidance on community mitigation measures can be found on the [CDC website](https://www.cdc.gov).

The purpose of this report is to develop a shared understanding of the current status of the pandemic at the national, regional, state and local levels. We recognize that data at the state level may differ from that available at the federal level. Our objective is to use consistent data sources and methods that allow for comparisons to be made across localities. We appreciate your continued support in identifying data discrepancies and improving data completeness and sharing across systems. We look forward to your feedback.



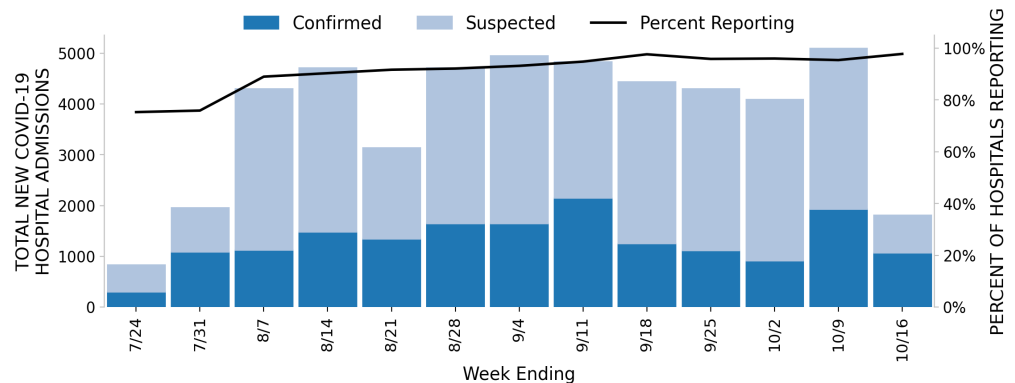


KENTUCKY

STATE REPORT | 10.18.2020

	STATE, LAST WEEK	STATE, % CHANGE FROM PREVIOUS WEEK	FEMA/HHS REGION, LAST WEEK	UNITED STATES, LAST WEEK
NEW COVID-19 CASES (RATE PER 100,000)	7,051 (158)	-9%	81,128 (121)	383,209 (117)
VIRAL (RT-PCR) LAB TEST POSITIVITY RATE	8.7%	-0.4%*	6.7%	5.4%
TOTAL VIRAL (RT-PCR) LAB TESTS (TESTS PER 100,000)	68,684** (1,537)	-1%**	967,904** (1,447)	7,141,821** (2,176)
COVID-19 DEATHS (RATE PER 100,000)	58 (1.3)	+26%	1,518 (2.3)	4,931 (1.5)
SNFs WITH ≥1 NEW RESIDENT COVID-19 CASE (≥1 NEW STAFF CASE)	16% (36%)	+3%* (+5%*)	13% (26%)	10% (22%)
SNFs WITH ≥1 NEW RESIDENT COVID-19 DEATH	5%	+2%*	5%	4%

HOSPITAL ADMISSIONS



* Indicates absolute change in percentage points.

** Due to delayed reporting, this figure may underestimate total diagnostic tests and week-on-week changes in diagnostic tests.

DATA SOURCES – Additional data details available under METHODS**Note:** Some dates may have incomplete data due to delays in reporting. Data may be backfilled over time, resulting in week-to-week changes.**Cases and Deaths:** State values are calculated by aggregating county-level data from USAFacts; therefore, the values may not match those reported directly by the state. Data is through 10/16/2020; last week is 10/10 - 10/16, previous week is 10/3 - 10/9.**Testing:** CELR (COVID-19 Electronic Lab Reporting) state health department-reported data through 10/14/2020. Last week is 10/8 - 10/14, previous week is 10/1 - 10/7.**SNFs:** Skilled nursing facilities. National Healthcare Safety Network. Data are reported separately for cases among residents and staff. Last week is 10/5-10/11, previous week is 9/28-10/4. Facilities that are undergoing reporting quality review are not included in the table, but may be included in other NHSN analyses.**Hospitalizations:** Unified hospitalization dataset in HHS Protect. These data exclude psychiatric, rehabilitation, and religious non-medical hospitals. In addition, hospitals explicitly identified by states/regions as those from which we should not expect reports were excluded from the percent reporting figure.



KENTUCKY

STATE REPORT | 10.18.2020

COVID-19 COUNTY AND METRO ALERTS*

Top 12 shown in table (full lists below)

METRO AREA (CBSA) LAST WEEK

COUNTY LAST WEEK

LOCALITIES IN RED ZONE	8 ■ (+0)	London Elizabethtown-Fort Knox Evansville Murray Campbellsville Mount Sterling Central City Middlesborough	43 ▲ (+12)	Jefferson Henderson Hardin Laurel Whitley Bullitt Calloway Pike Knox Jessamine Shelby Union
	7 ▲ (+4)	Louisville/Jefferson County Bowling Green Owensboro Clarksville Madisonville Bardstown Mayfield	19 ▲ (+9)	Warren Daviess Christian Boone Hopkins Scott Campbell Nelson Marshall Graves Perry Garrard
	7 ▼ (-2)	Lexington-Fayette Cincinnati Richmond-Berea Paducah Glasgow Danville Maysville	22 ▼ (-13)	Fayette Kenton McCracken Barren Greenup Letcher Boyle Carter Rockcastle Mercer Hart Floyd
Change from previous week's alerts: ▲ Increase ■ Stable ▼ Decrease				

All Red Counties: Jefferson, Henderson, Hardin, Laurel, Whitley, Bullitt, Pike, Calloway, Knox, Jessamine, Shelby, Union, Allen, Muhlenberg, Logan, Webster, Taylor, Ohio, Bell, Clay, Larue, Rowan, Marion, Meade, Estill, Montgomery, Knott, Caldwell, Bourbon, Todd, Clinton, Fulton, Harrison, Nicholas, Jackson, Monroe, Butler, McLean, Hancock, Owsley, Carlisle, Lee, Gallatin

All Orange Counties: Warren, Daviess, Christian, Boone, Hopkins, Scott, Campbell, Nelson, Marshall, Graves, Perry, Garrard, Wayne, Spencer, Metcalfe, Lewis, Fleming, Henry, Breckinridge

All Yellow Counties: Fayette, Kenton, McCracken, Barren, Greenup, Letcher, Boyle, Carter, Rockcastle, Mercer, Hart, Floyd, Russell, Lawrence, Grant, Trigg, Green, Martin, Washington, Powell, Livingston, Mason

* Localities with fewer than 10 cases last week have been excluded from these alerts.

Note: Lists of red, orange, and yellow localities are sorted by the number of new cases in the last 3 weeks, from highest to lowest. Some dates may have incomplete data due to delays in reporting. Data may be backfilled over time, resulting in week-to-week changes.

DATA SOURCES - Additional data details available under METHODS

Cases and Deaths: State values are calculated by aggregating county-level data from USAFacts; therefore, the values may not match those reported directly by the state. Data is through 10/16/2020; last week is 10/10 - 10/16, three weeks is 9/26 - 10/16.

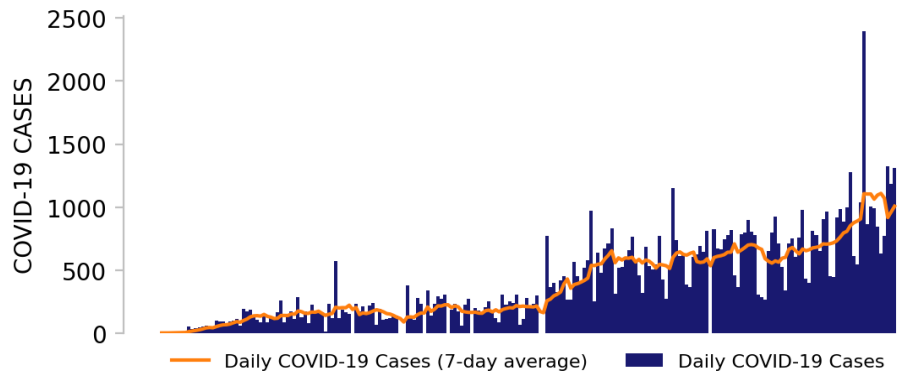
Testing: CELR (COVID-19 Electronic Lab Reporting) state health department-reported data through 10/14/2020. Last week is 10/8 - 10/14.



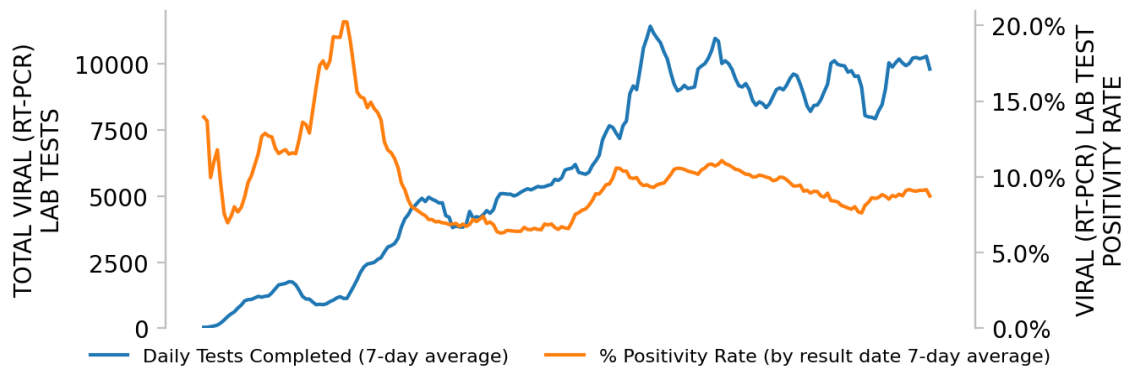
KENTUCKY

STATE REPORT | 10.18.2020

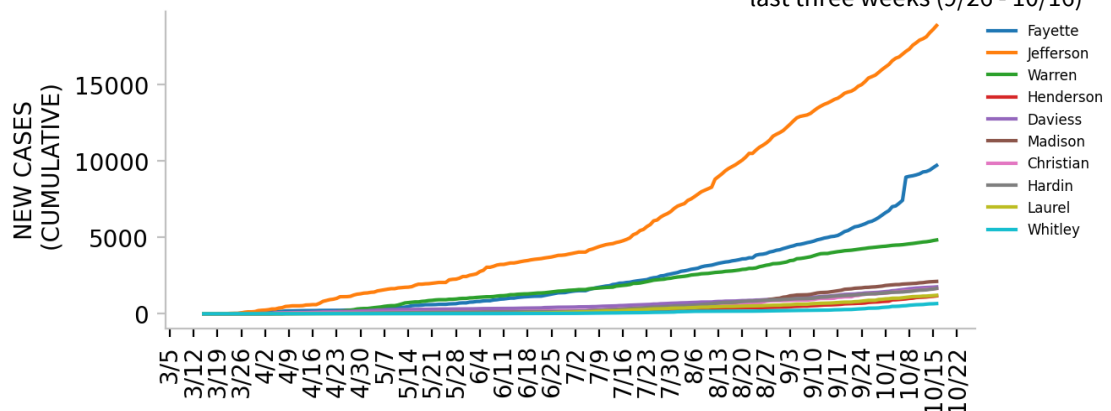
NEW CASES



TESTING



Top counties based on greatest number of new cases in last three weeks (9/26 - 10/16)



DATA SOURCES – Additional data details available under METHODS

Note: Some dates may have incomplete data due to delays in reporting. Data may be backfilled over time, resulting in week-to-week changes.

Cases: State values are calculated by aggregating county-level data from USAFacts; therefore, the values may not match those reported directly by the state. Data is through 10/16/2020.

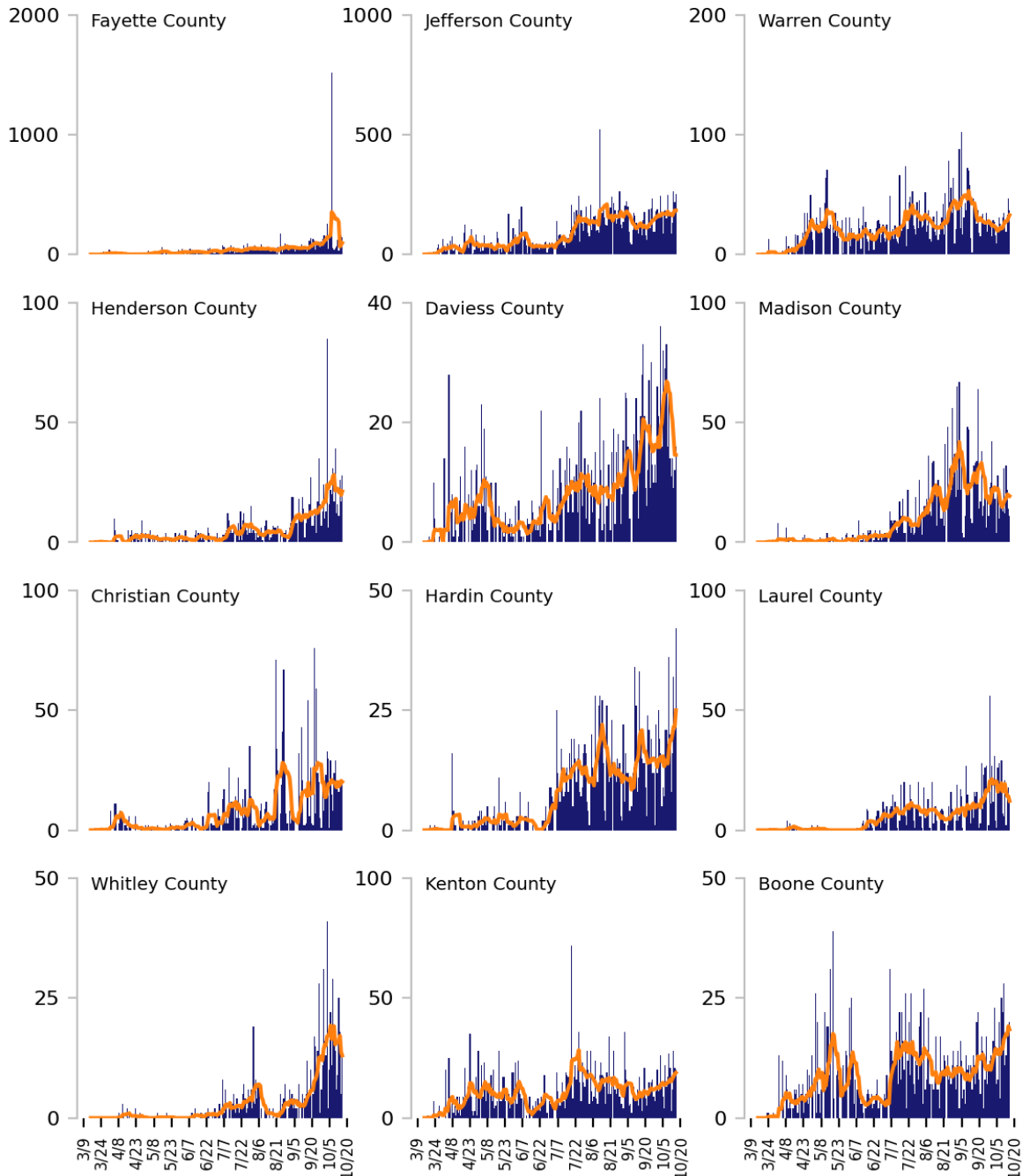
Testing: CELR (COVID-19 Electronic Lab Reporting) state health department-reported data through 10/14/2020.



Top 12 counties based on number of new cases in the last 3 weeks

— Daily COVID-19 Cases (7-day average) ■ Daily COVID-19 Cases

TOTAL DAILY CASES



DATA SOURCES – Additional data details available under METHODS

Cases: State values are calculated by aggregating county-level data from USAFacts; therefore, the values may not match those reported directly by the state. Data is through 10/16/2020. Last 3 weeks is 9/26 - 10/16.

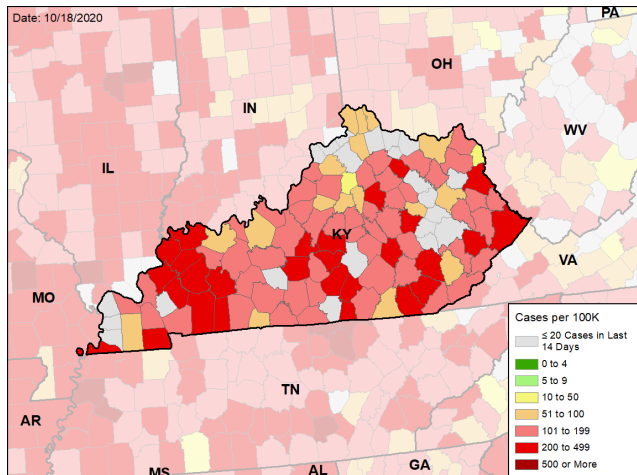


KENTUCKY

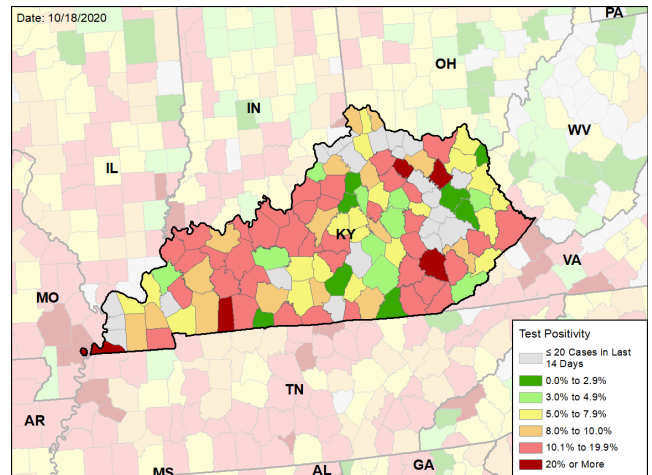
STATE REPORT | 10.18.2020

CASE RATES AND VIRAL LAB TEST POSITIVITY DURING THE LAST WEEK

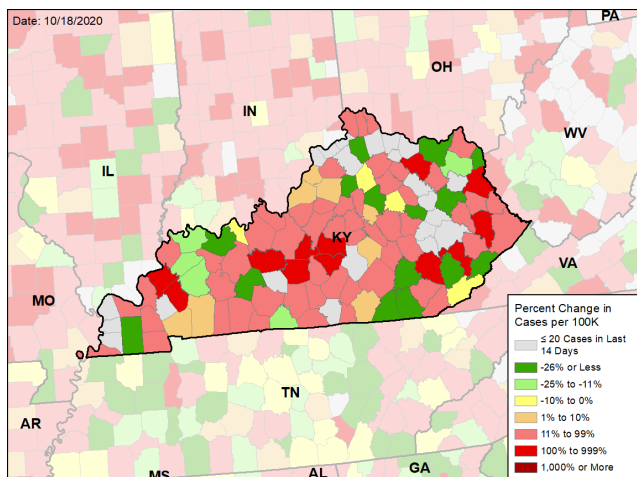
NEW CASES PER 100,000 DURING THE LAST WEEK



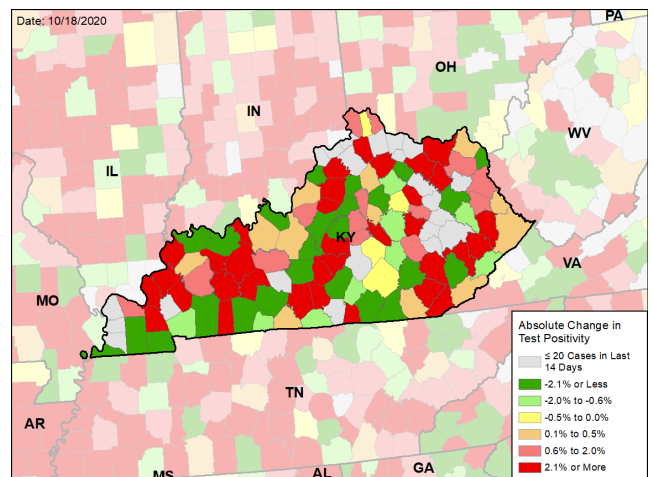
VIRAL (RT-PCR) LABORATORY TEST POSITIVITY DURING THE LAST WEEK



WEEKLY CHANGE IN NEW CASES PER 100,000



WEEKLY CHANGE IN VIRAL (RT-PCR) LABORATORY TEST POSITIVITY



DATA SOURCES – Additional data details available under METHODS

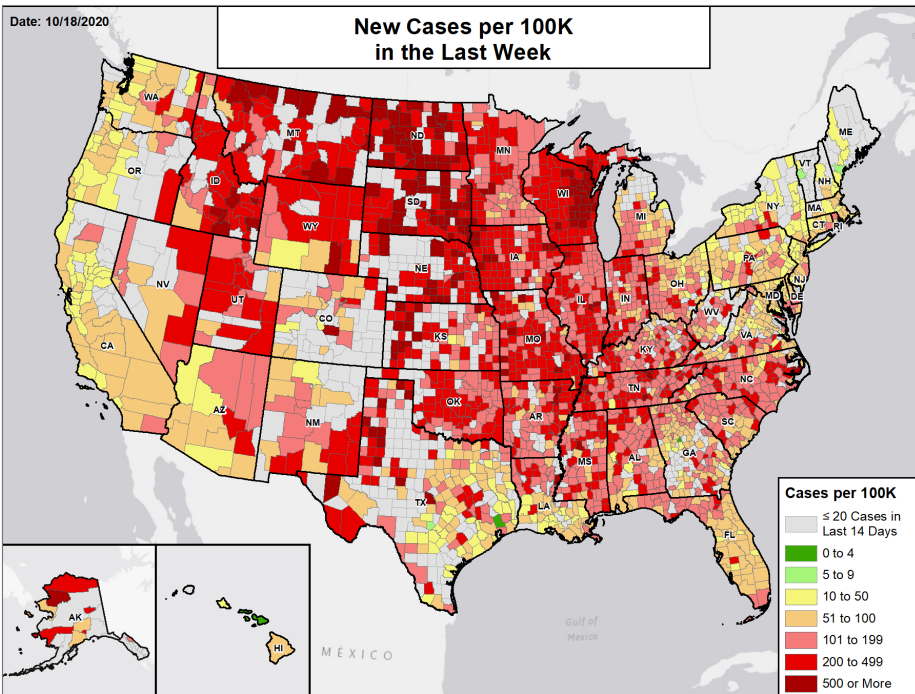
Note: Some dates may have incomplete data due to delays in reporting. Data may be backfilled over time, resulting in week-to-week changes.
Cases: State values are calculated by aggregating county-level data from USAFacts; therefore, the values may not match those reported directly by the state. Data is through 10/16/2020. Last week is 10/10 - 10/16, previous week is 10/3 - 10/9.

Testing: CELR (COVID-19 Electronic Lab Reporting) state health department-reported data through 10/14/2020. Last week is 10/8 - 10/14, previous week is 10/1 - 10/7.



National Picture

NEW CASES PER 100,000 LAST WEEK

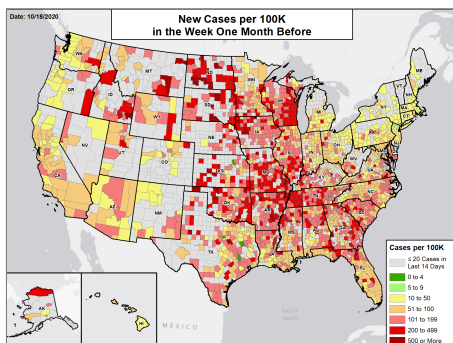


NATIONAL RANKING OF NEW CASES PER 100,000 LAST WEEK

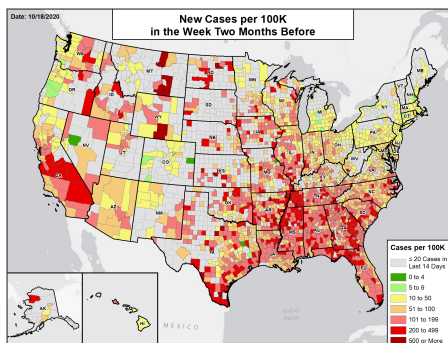
National Rank	State	National Rank	State
1	ND	27	CO
2	SD	28	MI
3	MT	29	TX
4	WI	30	WV
5	NE	31	OH
6	UT	32	DE
7	ID	33	FL
8	IA	34	VA
9	WY	35	GA
10	MO	36	LA
11	OK	37	CT
12	AR	38	PA
13	MS	39	AZ
14	AK	40	MD
15	IN	41	MA
16	TN	42	NJ
17	KS	43	WA
18	IL	44	DC
19	MN	45	OR
20	NM	46	CA
21	KY	47	NY
22	AL	48	NH
23	NC	49	HI
24	NV	50	ME
25	RI	51	VT
26	SC		

NEW CASES PER 100,000 IN THE WEEK:

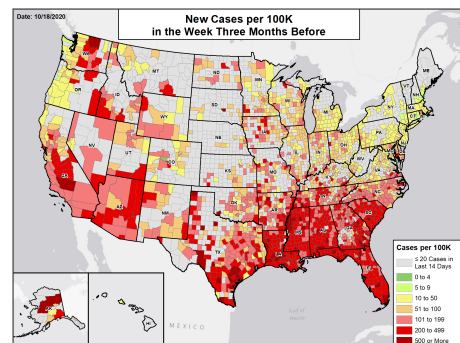
ONE MONTH BEFORE



TWO MONTHS BEFORE



THREE MONTHS BEFORE



DATA SOURCES

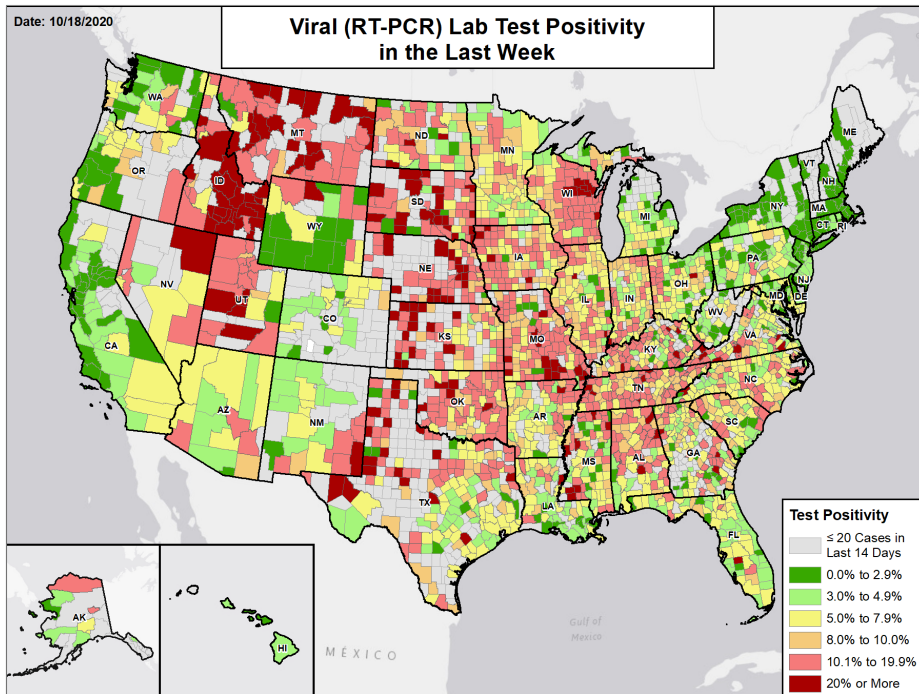
Note: Some dates may have incomplete data due to delays in reporting. Data may be backfilled over time, resulting in week-to-week changes.

Cases: County-level data from USAFacts through 10/16/2020. Last week is 10/10 - 10/16; the week one month before is 9/12 - 9/18; the week two months before is 8/15 - 8/21; the week three months before is 7/18 - 7/24.



National Picture

VIRAL (RT-PCR) LAB TEST POSITIVITY LAST WEEK

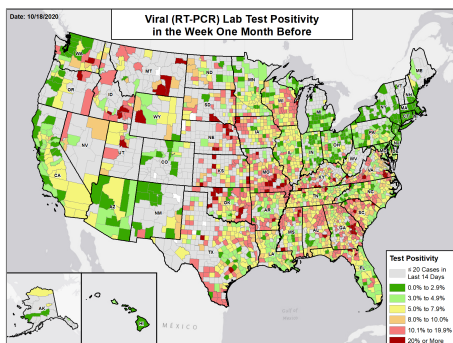


NATIONAL RANKING OF TEST POSITIVITY LAST WEEK

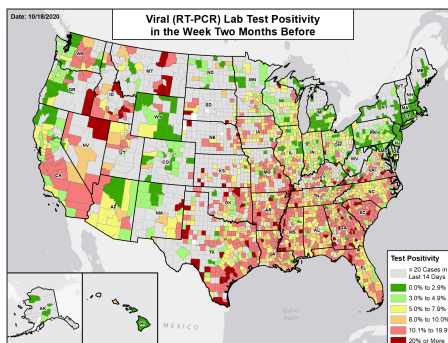
National Rank	State	National Rank	State
1	MT	27	GA
2	ID	28	AK
3	UT	29	AZ
4	SD	30	FL
5	NE	31	MI
6	WI	32	CO
7	OK	33	WY
8	MO	34	LA
9	IA	35	MD
10	KS	36	PA
11	TN	37	WV
12	MS	38	OH
13	AL	39	HI
14	KY	40	NJ
15	ND	41	CA
16	NV	42	WA
17	IN	43	CT
18	TX	44	DE
19	AR	45	NH
20	SC	46	RI
21	MN	47	NY
22	NM	48	MA
23	OR	49	DC
24	VA	50	ME
25	NC	51	VT
26	IL		

VIRAL (RT-PCR) LAB TEST POSITIVITY IN THE WEEK:

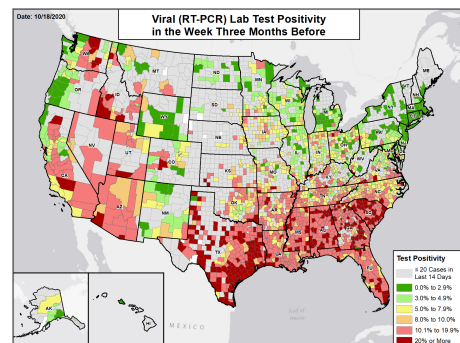
ONE MONTH BEFORE



TWO MONTHS BEFORE



THREE MONTHS BEFORE



DATA SOURCES

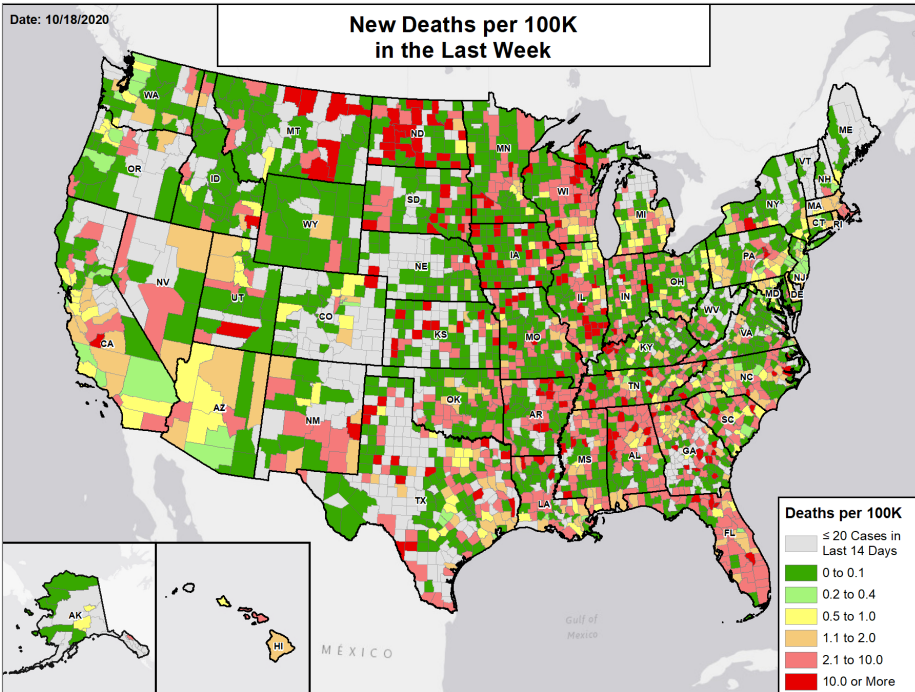
Note: Some dates may have incomplete data due to delays in reporting. Data may be backfilled over time, resulting in week-to-week changes.

Testing: Combination of CELR (COVID-19 Electronic Lab Reporting) state health department-reported data and HHS Protect laboratory data (provided directly to Federal Government from public health labs, hospital labs, and commercial labs) through 10/14/2020. Last week is 10/8 - 10/14; the week one month before is 9/10 - 9/16; the week two months before is 8/13 - 8/19; the week three months before is 7/16 - 7/22.



National Picture

NEW DEATHS PER 100,000 LAST WEEK

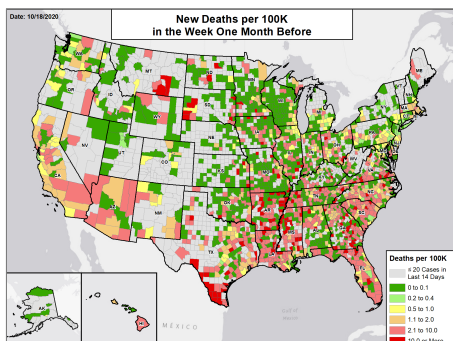


NATIONAL RANKING OF NEW DEATHS PER 100,000 LAST WEEK

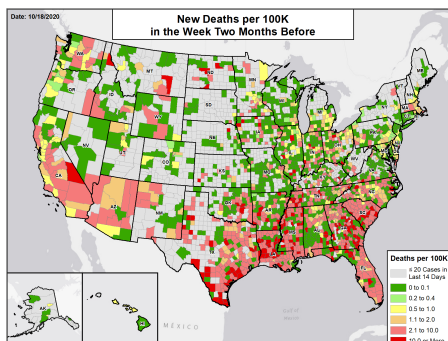
National Rank	State	National Rank	State
1	ND	27	KY
2	AR	28	NM
3	SD	29	CO
4	KS	30	MI
5	FL	31	PA
6	IA	32	DE
7	MS	33	WV
8	AL	34	CA
9	MT	35	NH
10	MO	36	UT
11	WI	37	DC
12	TN	38	ID
13	RI	39	AZ
14	GA	40	AK
15	IN	41	VA
16	LA	42	MD
17	MA	43	WY
18	IL	44	WA
19	NE	45	OH
20	TX	46	NY
21	SC	47	NJ
22	NV	48	OR
23	OK	49	CT
24	NC	50	ME
25	MN	51	VT
26	HI		

NEW DEATHS PER 100,000 IN THE WEEK:

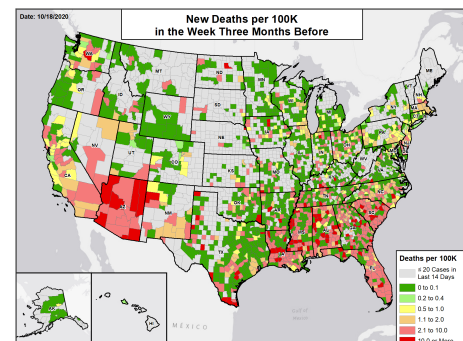
ONE MONTH BEFORE



TWO MONTHS BEFORE



THREE MONTHS BEFORE



DATA SOURCES

Note: Some dates may have incomplete data due to delays in reporting. Data may be backfilled over time, resulting in week-to-week changes.

Deaths: County-level data from USAFacts through 10/16/2020. Last week is 10/10 - 10/16; the week one month before is 9/12 - 9/18; the week two months before is 8/15 - 8/21; the week three months before is 7/18 - 7/24.



METHODS

STATE REPORT | 10.18.2020

COLOR THRESHOLDS: Results for each indicator should be taken in context of the findings for related indicators (e.g., changes in case incidence and testing volume). Values are rounded before color classification.

Metric	Dark Green	Light Green	Yellow	Orange	Red
New cases per 100,000 population per week	≤4	5 – 9	10 – 50	51 – 100	≥101
Percent change in new cases per 100,000 population	≤-26%	-25% – -11%	-10% – 0%	1% – 10%	≥11%
Diagnostic test result positivity rate	≤2.9%	3.0% – 4.9%	5.0% – 7.9%	8.0% – 10.0%	≥10.1%
Change in test positivity	≤-2.1%	-2.0% – -0.6%	-0.5% – 0.0%	0.1% – 0.5%	≥0.6%
Total diagnostic tests resulted per 100,000 population per week	≥2001	1001 – 2000	750 – 1000	500 – 749	≤499
Percent change in tests per 100,000 population	≥26%	11% – 25%	1% – 10%	-10% – 0%	≤-11%
COVID-19 deaths per 100,000 population per week	≤0.1	0.2 – 0.4	0.5 – 1.0	1.1 – 2.0	≥2.1
Percent change in deaths per 100,000 population	≤-26%	-25% – -11%	-10% – 0%	1% – 10%	≥11%
Skilled Nursing Facilities with at least one resident COVID-19 case, death	0%		1% – 5%		≥6%
Change in SNFs with at least one resident COVID-19 case, death	≤-2%		-1% – 1%		≥2%

DATA NOTES

- Some dates may have incomplete data due to delays in reporting. Data may be backfilled over time, resulting in week-to-week changes. It is critical that states provide as up-to-date data as possible.
- Cases and deaths:** County-level data from USAFacts as of 16:33 EDT on 10/18/2020. State values are calculated by aggregating county-level data from USAFacts; therefore, values may not match those reported directly by the state. Data are reviewed on a daily basis against internal and verified external sources and, if needed, adjusted. Last week data are from 10/10 to 10/16; previous week data are from 10/3 to 10/9; the week one month before data are from 9/12 to 9/18.
- Testing:** The data presented represent viral COVID-19 laboratory diagnostic and screening test (reverse transcription polymerase chain reaction, RT-PCR) results—not individual people—and exclude antibody and antigen tests, unless stated otherwise. CELR (COVID-19 Electronic Lab Reporting) state health department-reported data are used to describe county-level viral COVID-19 laboratory test (RT-PCR) result totals when information is available on patients' county of residence or healthcare providers' practice location. HHS Protect laboratory data (provided directly to Federal Government from public health labs, hospital labs, and commercial labs) are used otherwise. Some states did not report on certain days, which may affect the total number of tests resulted and positivity rate values. Because the data are deidentified, total viral (RT-PCR) laboratory tests are the number of tests performed, not the number of individuals tested. Viral (RT-PCR) laboratory test positivity rate is the number of positive tests divided by the number of tests performed and resulted. Resulted tests are assigned to a timeframe based on this hierarchy of test-related dates: 1. test date; 2. result date; 3. specimen received date; 4. specimen collection date. Resulted tests are assigned to a county based on a hierarchy of test-related locations: 1. patient residency; 2. provider facility location; 3. ordering facility location; 4. performing organization location. States may calculate test positivity other using other methods. Last week data are from 10/8 to 10/14; previous week data are from 10/1 to 10/7; the week one month before data are from 9/10 to 9/16. HHS Protect data is recent as of 08:09 EDT on 10/18/2020. Testing data are inclusive of everything received and processed by the CELR system as of 19:00 EDT on 10/17/2020.
- Hospitalizations:** Unified hospitalization dataset in HHS Protect. This figure may differ from state data due to differences in hospital lists and reporting between federal and state systems. These data exclude psychiatric, rehabilitation, and religious non-medical hospitals. In addition, hospitals explicitly identified by states/regions as those from which we should not expect reports were excluded from the percent reporting figure. The data presented represents raw data provided; we are working diligently with state liaisons to improve reporting consistency. Data is recent as of 16:54 EDT on 10/18/2020.
- Skilled Nursing Facilities:** National Healthcare Safety Network (NHSN). Data report resident and staff cases independently. Quality checks are performed on data submitted to the NHSN. Data that fail these quality checks or appear inconsistent with surveillance protocols may be excluded from analyses. Data presented in this report are more recent than data publicly posted by CMS. Last week is 10/5-10/11, previous week is 9/28-10/4. Facilities that are undergoing reporting quality review are not included in the table, but may be included in other NHSN analyses.
- County and Metro Area Color Categorizations**
 - Red Zone:** Those core-based statistical areas (CBSAs) and counties that during the last week reported both new cases at or above 101 per 100,000 population, and a lab test positivity result at or above 10.1%.
 - Orange Zone:** Those CBSAs and counties that during the last week reported both new cases between 51–100 per 100,000 population, and a lab test positivity result between 8.0–10.0%, or one of those two conditions and one condition qualifying as being in the “Red Zone.”
 - Yellow Zone:** Those CBSAs and counties that during the last week reported both new cases between 10–50 per 100,000 population, and a lab test positivity result between 5.0–7.9%, or one of those two conditions and one condition qualifying as being in the “Orange Zone” or “Red Zone.”