

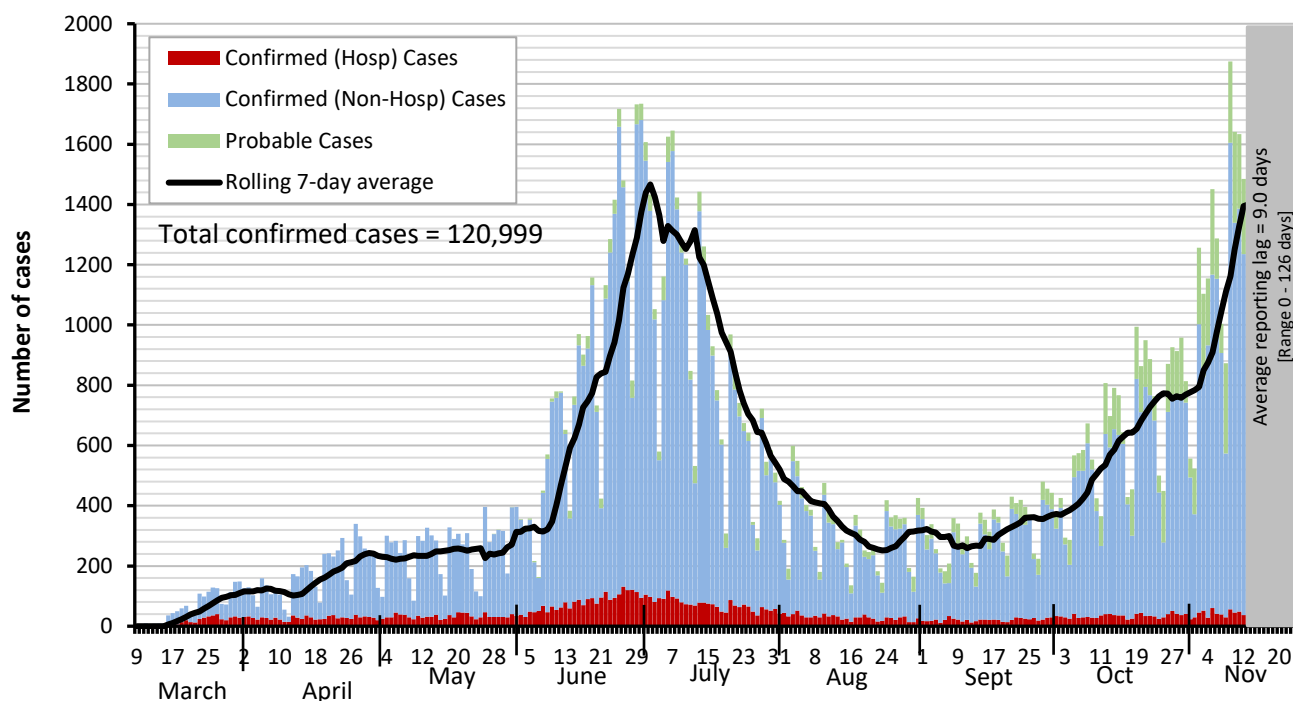


Dallas County Health and Human Services 2019 Novel Coronavirus (COVID-19) Summary

November 24, 2020

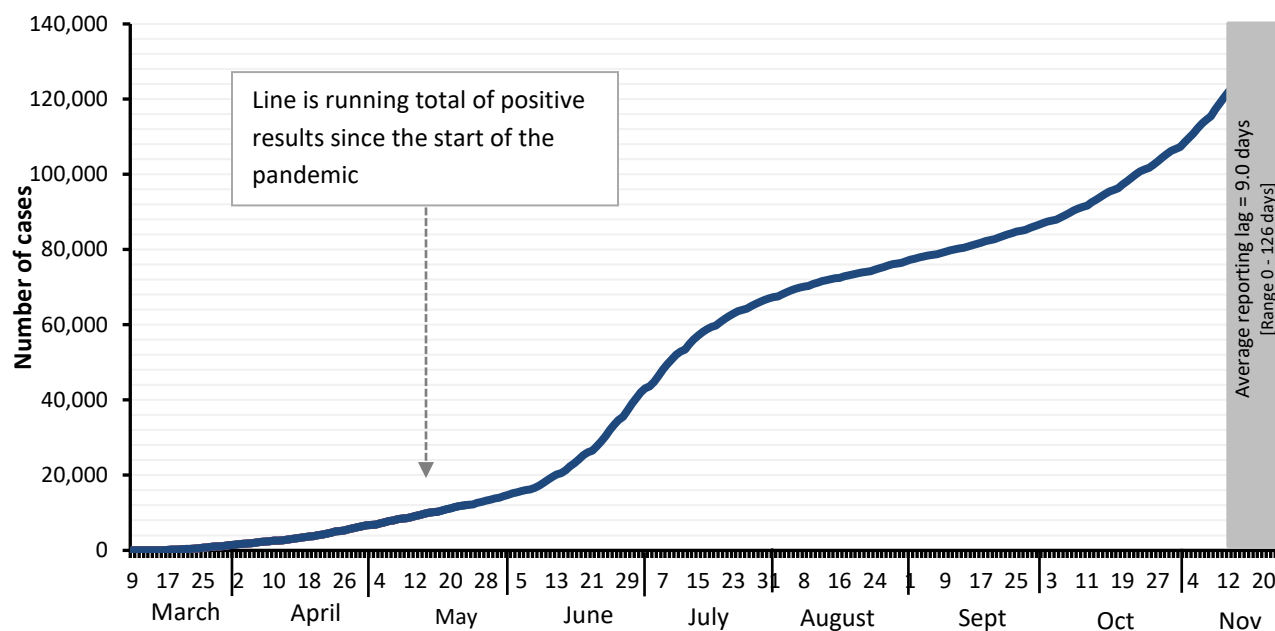
- As of November 24, 2020, DCHHS is reporting an additional 1,516 confirmed and 200 probable cases of 2019 novel coronavirus (COVID-19). The cumulative total number of confirmed cases in Dallas County is 120,999 including 1,197 confirmed deaths. The total probable case count is 11,444 including 28 probable deaths.
- The provisional seven-day average of daily new confirmed and probable cases (by date of test collection) for CDC week 46 (week ending 11/14/2020) was 1,405, which is a rate of 53.3 daily new cases per 100,000 residents. This is the highest case rate in Dallas County since the beginning of the pandemic.
- The percentage of respiratory specimens testing positive for SARS-CoV-2 remains high, with 17.0% of symptomatic patients presenting to area hospitals testing positive in week 46 (week ending 11/14/2020).
- Since November 1st, there have been 3,630 COVID-19 cases in school-aged children and staff reported from over 632 separate K-12 schools in Dallas County, including 466 staff members. The proportion of cases occurring in children between 11 and 17 years of age has been increasing over the past 3 months.
- Over the past 30 days, there have been 818 COVID-19 cases reported from 90 separate long-term care facilities, including 309 staff members. This is the highest number of long-term care facilities with active outbreaks reported in Dallas County since the beginning of the pandemic. Of these cases, 48 have been hospitalized and 29 have died, including two deaths of staff members.
- Twenty active clusters of cases in congregate-living facilities (homeless shelters, group homes, and halfway homes) have been reported in the past 30 days associated with 167 cases, including one facility this past week with 81 confirmed COVID-19 cases.

Figure 1. Confirmed COVID-19 positive cases by date of test collection, Dallas County: March 10 – November 24, 2020¹⁻⁴



1. Data received as of 8:00 pm yesterday, for residents of Dallas County tested with known specimen collection dates. This does include delayed results from previous days. All data are preliminary and subject to change as cases continue to be investigated.
2. Data are incomplete for the most recent dates. Test results may be reported to DCHHS several days after the result. The reporting lag is calculated as time from specimen collection to receipt of test results. The average reporting lag is 9.0 days, with a range from 0 – 126 days.
3. This summary graph includes only confirmed cases based on molecular amplification detection test results.
4. Bars are the number of positive molecular amplification detection tests which were collected that day.
5. Rolling 7-day average is the average number of new confirmed COVID-19 cases collected 7 days prior to value.

Figure 2. Cumulative confirmed COVID-19 cases by date of test collection, Dallas County: March 10 – November 24, 2020¹⁻²



1. Data received as of 8:00 pm yesterday, for residents of Dallas County tested with known specimen collection dates. This does include delayed results from previous days. All data are preliminary and subject to change as cases continue to be investigated.
2. Data are incomplete for the most recent dates. Test results may be reported to DCHHS several days after the result. The reporting lag is calculated as time from specimen collection to receipt of test results. The average reporting lag is 9.0 days, with a range from 0 – 126 days.

Table 1. Characteristics of cumulative confirmed COVID-19 cases, Dallas County: March 9 – November 24, 2020

		Confirmed (N)	Probable (N)	% of Total Cases ⁺
Total Cases in Dallas County residents		N = 120,999	N=11,444	100%
Age Group (years)	0 to 17	13,337	2,867	12%
	18 to 40	55,315	5,090	46%
	41 to 64	40,982	2,828	33%
	≥65	11,239	347	9%
Sex	Female	61,786	5,415	52%
	Male	57,739	5,208	48%
Not Hospitalized (Includes: Outpatient, urgent care, drive-through, ED)		110,010	N/A	91%
Ever Hospitalized		9,989	N/A	9%

⁺ Percentages calculated among cases with known age/sex

Table 2. Number of confirmed COVID-19 cases by age group and month of collection, Dallas County

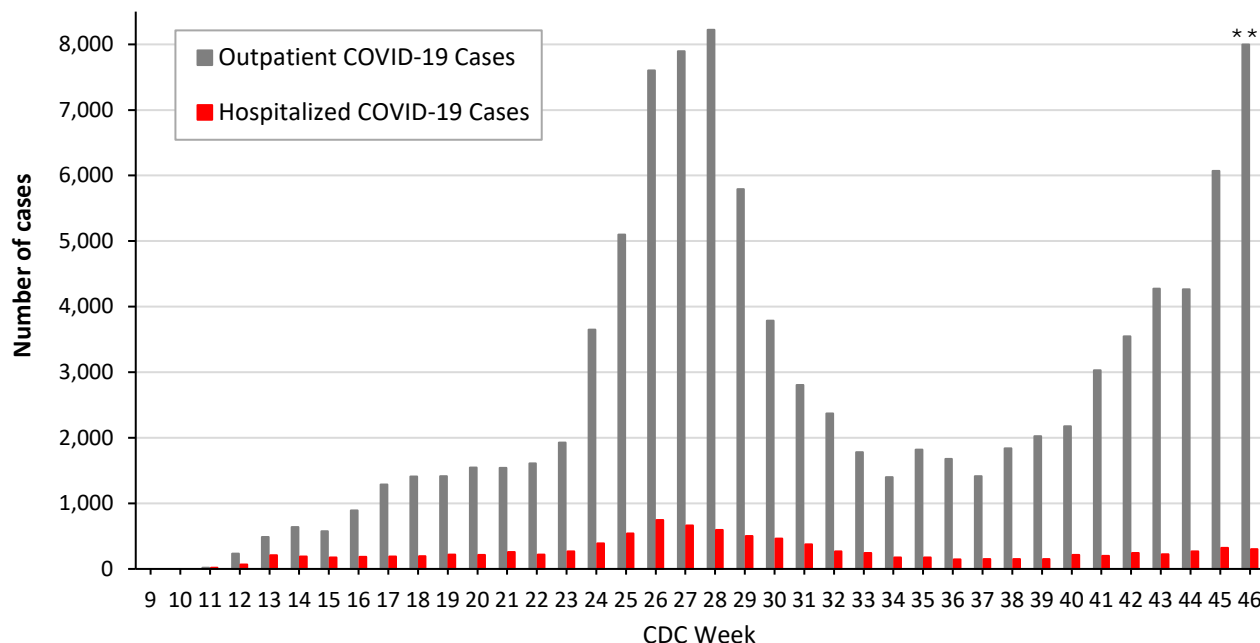
Age Group (in years)	0 to 17		18 to 22		23 to 39		40 to 64		≥65	
Month of Diagnosis	N	%	N	%	N	%	N	%	N	%
March	26	2%	51	4%	421	31%	642	47%	221	16%
April	282	6%	285	6%	1,587	31%	2,258	45%	641	13%
May	733	10%	605	8%	2,452	32%	2,995	40%	791	10%
June	2,277	9%	2,213	9%	10,031	41%	7,963	33%	1,713	7%
July	3,064	12%	2,398	9%	9,086	34%	9,806	37%	2,369	9%
August	1,000	11%	984	11%	2,859	32%	3,168	35%	947	10%
September	930	11%	1,059	13%	2,892	34%	2,867	34%	692	8%
October	2,147	13%	1,456	9%	5,732	33%	5,982	35%	1,757	10%
November (thru 11/24)	2,685	13%	1,731	8%	7,091	34%	7,112	35%	2,057	10%

Table 3. Confirmed and Probable School-Aged Cases (5 to 17 years) by CDC week of test collection

City of Residence	Week 41 (ending 10/10)	Week 42 (ending 10/17)	Week 43 (ending 10/24)	Week 44 (ending 10/31)	Week 45 (ending 11/7)	Week 46 (ending 11/14)
Addison	1	0	1	0	0	2
Balch Springs	4	6	4	21	7	20
Carrollton	9	18	13	8	14	25
Cedar Hill	12	13	14	14	21	32
Cockrell Hill	0	0	0	1	2	3
Combine	0	0	0	0	0	0
Coppell	3	13	3	10	48	29
Dallas	213	252	330	285	391	582
DeSoto	10	13	26	11	16	20
Duncanville	5	7	11	12	18	26
Farmers Branch	6	6	2	4	7	12
Ferris	0	0	0	0	0	0
Garland	33	53	59	43	106	151
Glenn Heights	1	1	4	2	3	3
Grand Prairie	35	32	61	36	83	70
Highland Park	0	3	0	0	2	3
Hutchins	3	0	2	1	1	0
Irving	45	57	49	41	73	109
Lancaster	7	7	5	5	12	19
Lewisville	0	0	0	0	0	0
Mesquite	44	42	62	55	68	96
Ovilla	0	0	0	0	0	0
Richardson	8	14	19	26	19	21
Rowlett	8	2	9	18	19	22
Sachse	1	2	2	2	2	7
Seagoville	2	3	7	10	7	9
Sunnyvale	1	0	1	1	13	8
University Park	7	3	2	4	5	9
Wilmer	2	1	1	2	0	4
Wylie	1	0	0	0	0	0
Unknown	0	0	0	0	0	0
Total	461	548	687	612	938	1,282

Includes only children ages 5 to 17 years of age residing in Dallas County, with positive molecular or antigen test results received as of 8:00 pm yesterday. Does not include verbal reports of test results that are not accompanied by documentation of test results from a laboratory or testing facility. All data are preliminary and subject to change as cases continue to be investigated.

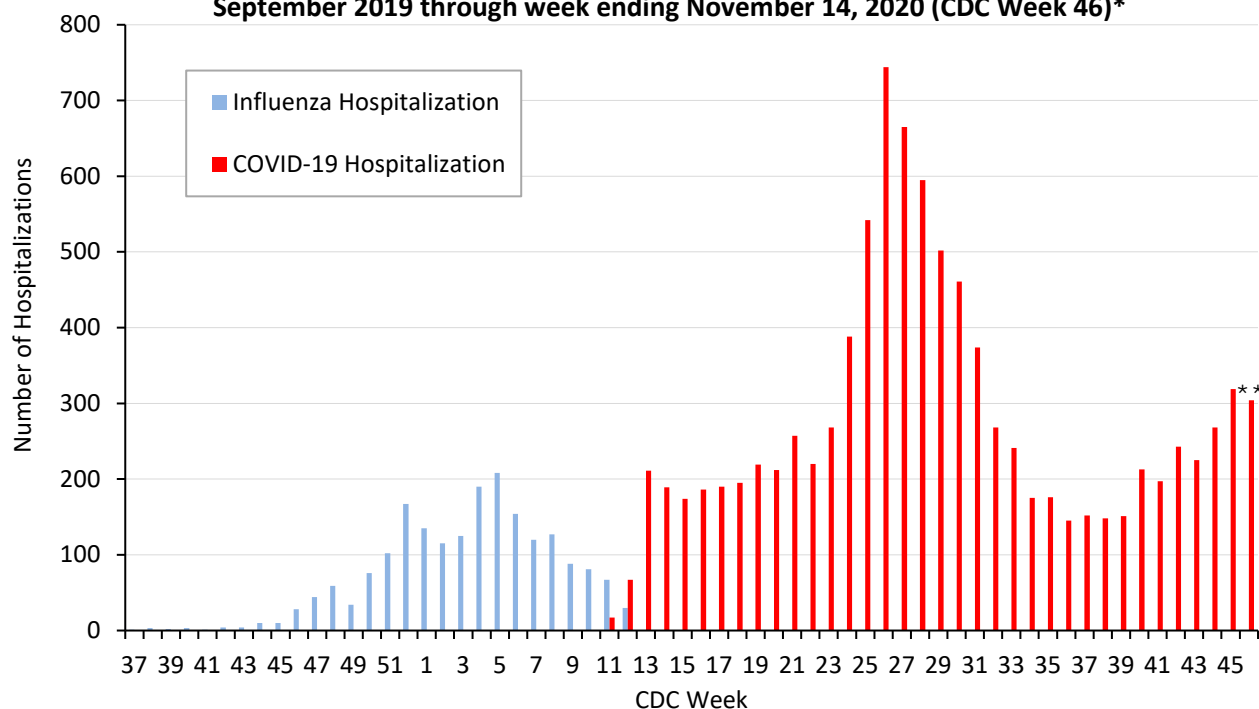
Figure 3. Non-hospitalized and hospitalized confirmed COVID-19 cases by week of test collection, Dallas County: September 2019 through week ending November 14, 2020 (CDC Week 46)*



* Non-hospitalized includes all patients not admitted to acute-care hospitals (e.g. outpatient, urgent care, drive-through, ED-only, LTCF) and diagnosed with confirmed COVID-19. All data are preliminary and subject to change as cases continue to be received and investigated.

** Data are incomplete for the most recent dates. Test results may be reported to DCHHS several days after the result. The reporting lag is calculated as time from specimen collection to receipt of molecular amplification detection test results.

Figure 4. Influenza and confirmed COVID-19 hospitalizations by week of admission, Dallas County: September 2019 through week ending November 14, 2020 (CDC Week 46)*



* Hospitalized Dallas County residents diagnosed with confirmed COVID-19 by molecular amplification detection testing. All data are preliminary and subject to change as cases continue to be received and investigated.

** Data are incomplete for the most recent dates. Test results may be reported to DCHHS several days after the result. The reporting lag is calculated as time from specimen collection to receipt of test results.

**Table 4. Characteristics of cumulative hospitalized confirmed COVID-19 cases,
Dallas County: March 10 – November 24, 2020**

		Hospitalized Cases	%
<i>Ever Hospitalized</i>		N = 9,989	9% of Total Cases
Admitted to Intensive Care Unit		2,349	23%
Mechanical Ventilation		1,228	12%
Sex	Male	5,218	52%
	Female	4,771	48%
Age Group (years)	0-17	247	2%
	18-40	2,186	22%
	41-64	4,344	44%
	≥65	3,212	32%
Presence of ≥1 high risk condition		5,505	55%
Diabetes		3,060	31%
Lung Disease (e.g. COPD, asthma)		974	10%
Heart Disease (e.g. CHF)		1,306	13%
Kidney Disease (e.g. ESRD, dialysis)		1,001	10%
Cancer, Immune-compromise		688	7%
Obesity		1,745	17%
Race/ Ethnicity	White	1,804	18%*
	Hispanic	4,639	47%*
	Black	2,261	22%*
	Other	369	4%*
	Non-reported/ Unknown	916	9%

* Percentages can also be calculated to exclude cases for which race/ethnicity was not reported

**Table 5. Characteristics of cumulative confirmed COVID-19 deaths,
Dallas County: March 10 – November 24, 2020**

<i>Death classified as confirmed if decedent was a Dallas County resident with a positive molecular test. Data are obtained from ME office, hospitals, and vital statistics.</i>		Confirmed Deaths	%
		N = 1,197	1.2% of Total Cases
Sex	Male	751	63%
	Female	446	37%
Age Group (years)	0-17	1	<1%
	18-40	52	4%
	41-64	394	33%
	≥65	750	63%
Resident of a Long-Term Care Facility		275	23%
Presence of ≥1 high risk condition		906	76%
Diabetes		556	46%
Race/ Ethnicity	White	297	25% (29% of population) ¹
	Hispanic	561	47% (41% of population) ¹
	Black	290	24% (24% of population) ¹
	Asian	35	3% (7% of population) ¹

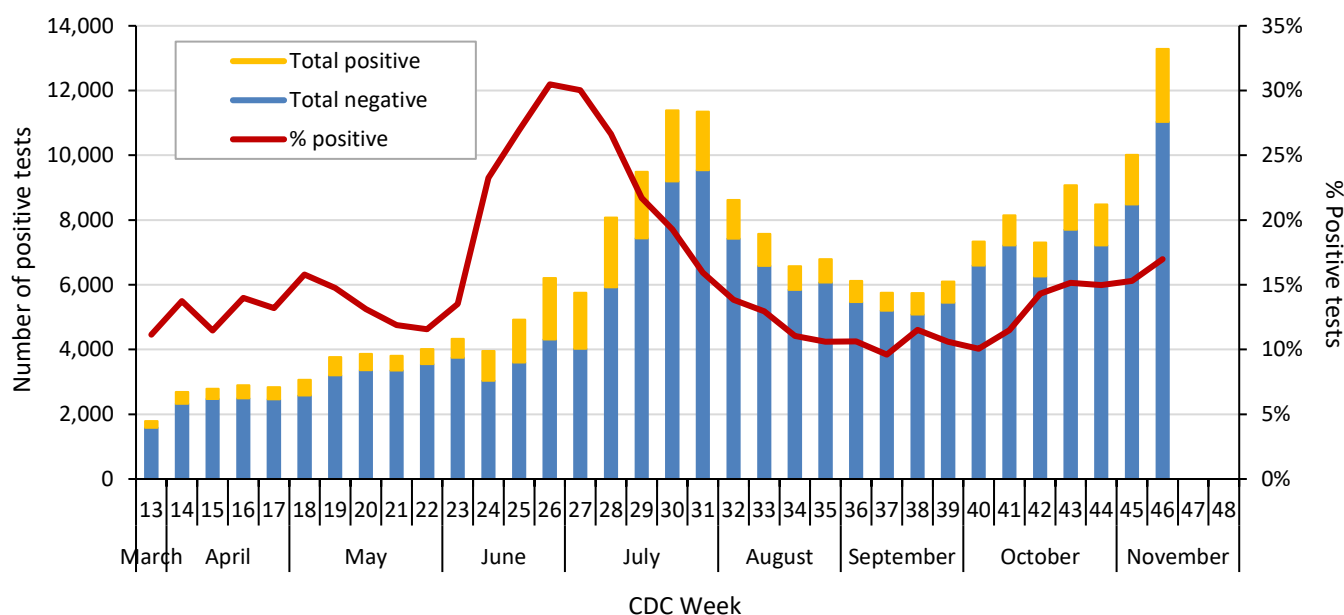
¹ 2019 U.S. Census population estimates for Dallas County

Table 6. Respiratory virus testing by North Texas hospitals participating in public health surveillance programs: August 30 – November 14, 2020 (CDC Weeks 37-46)¹⁻²

Week Ending		9/12	9/19	9/26	10/3	10/10	10/17	10/24	10/31	11/7	11/14
SARS-CoV-2	Positive	553	662	647	737	936	1,046	1,374	1,271	1,533	2,255
	Total Tests	5,757	5,748	6,098	7,331	8,148	7,308	9,072	8,487	10,018	13,289
Novel Coronavirus		% Positive	9.6%	11.5%	10.6%	10.1%	11.5%	14.3%	15.1%	15.3%	17.0%
Influenza	Positive	0	0	0	0	0	0	2	0	0	0
	Total Tests	185	190	215	231	91	105	308	302	137	178
	% Positive	0%	0%	0%	0%	0%	0%	0.6%	0%	0%	0%
Seasonal (non-SARS-2) Coronavirus	Positive	0	0	0	0	0	0	0	0	0	0
	Total Tests	71	37	72	60	69	83	84	49	104	143
	% Positive	0%	0%	0%	0%	0%	0%	0%	0%	0%	0%
Adenovirus (respiratory)	Positive	2	0	3	2	1	4	2	2	1	4
	Total Tests	158	136	168	162	69	83	193	164	104	143
	% Positive	1.3%	0%	1.8%	1.2%	1.4%	4.8%	1.0%	1.2%	1.0%	2.8%
Metapneumovirus	Positive	0	0	0	0	0	0	0	0	0	1
	Total Tests	158	136	168	162	69	83	193	164	104	143
	% Positive	0%	0%	0%	0%	0%	0%	0%	0%	0%	0.7%
Rhinovirus/Enterovirus	Positive	21	21	26	23	21	36	48	37	42	52
	Total Tests	158	136	168	162	69	83	193	164	137	143
	% Positive	13.3%	15.4%	15.5%	14.2%	30.4%	43.4%	24.9%	22.6%	30.7%	36.4%
RSV	Positive	0	0	0	0	0	0	0	0	0	0
	Total Tests	164	147	189	185	91	105	220	199	137	178
	% Positive	0%	0%	0%	0%	0%	0%	0%	0%	0%	0%

Data sources: National Respiratory and Enteric Virus Surveillance System and an additional subset of hospitals voluntarily reporting surveillance PCR data directly to DCHHS. Testing denominators include out-of-county patients and testing performed only through hospitals in Dallas County. (Does not include FEMA drive-thru clinics). Data are incomplete for the most recent dates.

Figure 5. SARS-CoV-2 positive PCR tests reported to DCHHS by hospital laboratories: March 22 – November 14, 2020 (CDC Weeks 26-46)¹⁻²



1. Data received as of 8:00 pm yesterday. All data are preliminary and subject to change as cases continue to be received and investigated.
2. Data are incomplete for the most recent dates. Test results may be reported to DCHHS several days after the result.

Table 7. Summary of weekly COVID-19 hospitalizations and deaths from Dallas County hospitals, Vital Statistics and Medical Examiner's office¹⁻⁴

Week Ending	09/12	09/19	09/26	10/03	10/10	10/17	10/24	10/31	11/7	11/14	09/08/19–Present
CDC Week	37	38	39	40	41	42	43	44	45	46	
COVID-19 hospitalizations ¹	152	148	151	213	197	243	225	268	319	304	9,989*
COVID-19 ICU admissions ¹	36	25	35	49	48	56	48	59	49	53	2,349*
Probable COVID-19-associated deaths ²	0	0	1	0	0	0	3	3	5	2	28*
Confirmed COVID-19-associated deaths ³	17	15	13	14	15	17	21	22	18	20	1,197*

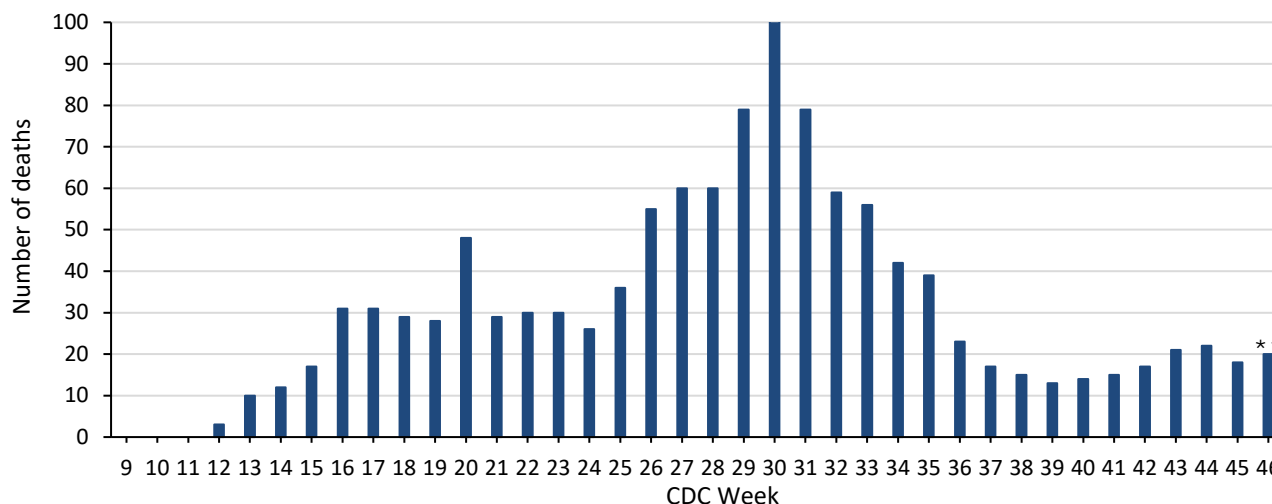
* All data are preliminary and subject to change as cases continue to be received and investigated.

¹ Reflects all COVID-19-associated hospitalizations and intensive care unit admissions reported from area hospitals within Dallas County by week of admission. Hospitalizations are inclusive of ICU admissions. Data are preliminary and include reports received as of 8:00 pm yesterday.

² Probable COVID-19 deaths as defined by CSTE interim case classification criteria—meeting vital records criteria without molecular lab test confirmation.

³ Confirmed COVID-19 deaths as defined by a positive molecular amplification detection test *and* any of the following: (1) death certificate denotation, (2) medical record documentation of compatible symptoms and clear progression from illness to death, or (3) determination by the County Medical Examiner's office (ME) of no alternate cause of death. Does not include possible COVID-19-associated deaths with pending determination of cause of death.

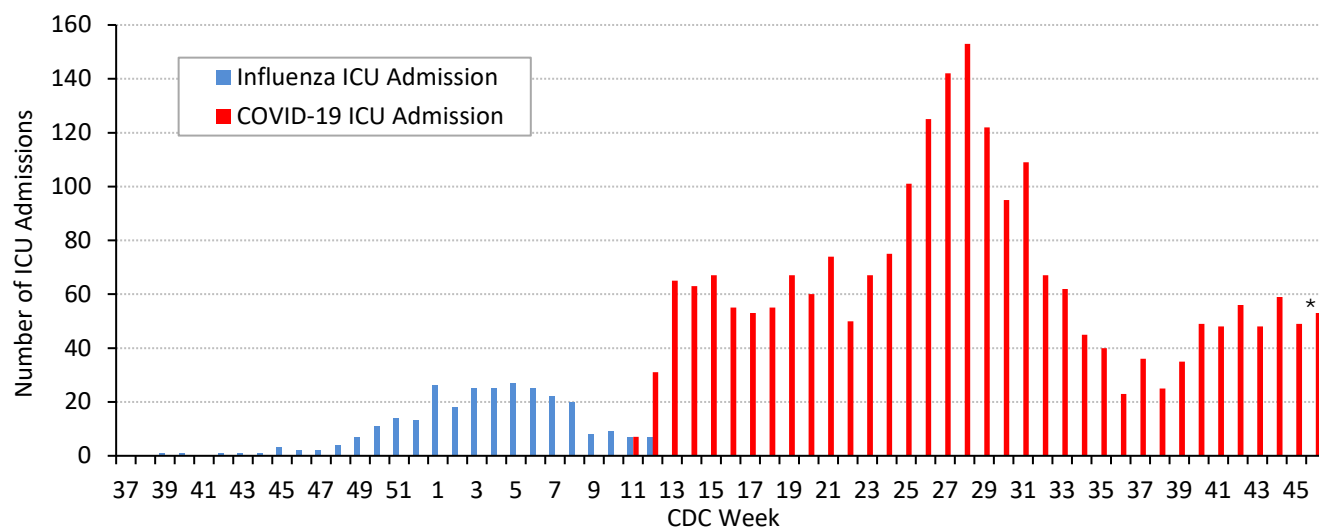
Figure 6. Confirmed COVID-19-associated deaths by week of death, Dallas County: March 2019 through week ending November 14, 2020 (CDC Week 46)*



* Dallas County residents diagnosed with confirmed COVID-19 by molecular amplification detection testing.

** All data are preliminary and subject to change as cases continue to be received and investigated.

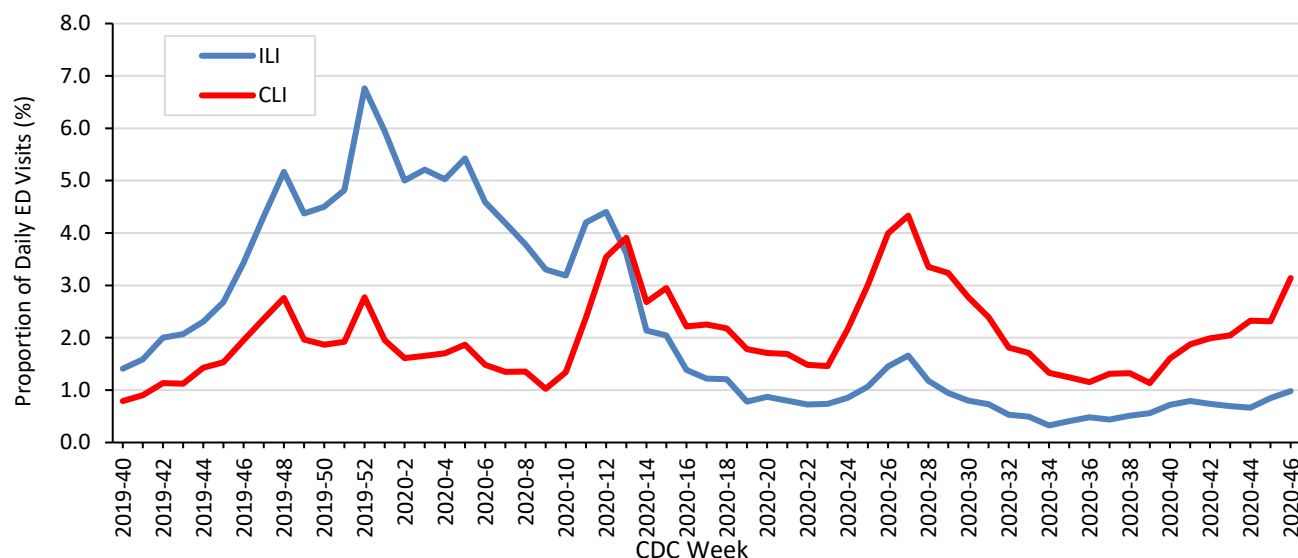
Figure 7. Intensive care unit hospitalizations for influenza and COVID-19 by week of admission, Dallas County: September 2019 through week ending November 14, 2020 (CDC Week 46)*



* New ICU admissions of Dallas County residents reported with confirmed COVID-19 by molecular amplification detection testing as of 8:00 pm yesterday. Hospitalized patients with self-reported residence from outside of Dallas County are not included.

** All data are preliminary and subject to change as cases continue to be received and investigated.

Figure 8. Syndromic surveillance of emergency department visits for COVID-like illness (CLI)* and Influenza-like illness (ILI), Dallas County: September 29, 2019 – November 14, 2020 (CDC Week 46)**



ESSENCE Data is from 18 hospital emergency departments voluntarily reporting numbers of persons presenting with self-reported chief complaints.

* CLI is defined as chief complaint of fever and cough or shortness of breath or difficulty breathing.

**ILI is defined as chief complaint of fever and cough or sore throat or mention of influenza.

Table 8. Summary of weekly COVID-19 confirmed and probable cases and deaths, Dallas County (CDC Weeks 25 - 46)

CDC Week	Week Ending	Total Confirmed and Probable Cases	Total School-Aged Cases (5 to 17 years)	Daily Average New Confirmed and Probable Cases*	Daily Average New Confirmed and Probable Deaths**	Percentage of Tests Positive for SARS-CoV-2***
25	6/20/2020	5,865	453	838	5	26.9%
26	6/27/2020	8,621	625	1,232	8	30.5%
27	7/4/2020	8,959	659	1,280	9	30.0%
28	7/11/2020	9,205	832	1,315	9	26.6%
29	7/18/2020	6,612	659	945	11	21.7%
30	7/25/2020	4,522	476	646	15	19.3%
31	8/1/2020	3,357	416	480	12	15.9%
32	8/8/2020	2,850	304	407	9	13.8%
33	8/15/2020	2,167	180	310	9	13.0%
34	8/22/2020	1,759	185	251	6	11.0%
35	8/29/2020	2,200	183	314	6	10.6%
36	9/5/2020	2,072	153	296	3	10.6%
37	9/12/2020	1,872	190	267	2	9.6%
38	9/19/2020	2,235	236	319	2	11.5%
39	9/26/2020	2,511	264	359	2	10.6%
40	10/3/2020	2,694	306	385	2	10.1%
41	10/10/2020	3,644	461	521	2	11.5%
42	10/17/2020	4,520	548	646	2	14.3%
43	10/24/2020	5,380	687	769	3	15.1%
44	10/31/2020	5,481	612	783	4	15.0%
45	11/7/2020	7,745	938	1,106	3	15.3%
46	11/14/2020	9,833	1,282	1,405	3	17.0%

* For 7-day time period for respective CDC week by date of test collection

** For 7-day time period for respective CDC week by date of death

*** See Table 6 for historical data

Table 9. Cumulative COVID-19 cases by city of residence within Dallas County as of November 24, 2020*(e.g. Does not include cases who reside in portions of cities which are not within Dallas County.)*

<i>City of Residence</i>	Confirmed Cases (N=120,999)	Probable Cases (N=11,444)	Total Confirmed + Probable Cases reported in 14 day period from 11/1 – 11/14*	Estimated COVID-19 Prevalence (%) in 14 day period from 11/1 – 11/14** (lower – upper estimate range)
Addison	553	59	97	1.79 - 5.96
Balch Springs	1,377	106	160	1.92 - 6.40
Carrollton	2,095	195	311	1.64 - 5.47
Cedar Hill	2,070	157	323	2.05 - 6.82
Cockrell Hill	269	25	32	2.31 - 7.70
Combine	9	1	4	1.36 - 4.52
Coppell	888	246	286	2.11 - 7.04
Dallas	60,780	5,910	8,531	2.03 - 6.77
DeSoto	2,286	98	333	1.89 - 6.28
Duncanville	2,054	173	328	2.54 - 8.46
Farmers Branch	1,342	149	213	1.33 - 4.42
Ferris	7	0	1	N/A
Garland	11,090	661	1,816	2.27 - 7.58
Glenn Heights	293	18	41	1.20 - 4.00
Grand Prairie	6,280	933	934	2.10 - 7.00
Highland Park	213	71	58	1.92 - 6.39
Hutchins	320	7	36	1.84 - 6.14
Irving	11,745	771	1,429	1.79 - 5.96
Lancaster	2,037	98	361	2.76 - 9.20
Lewisville	1	1	0	N/A
Mesquite	7,082	724	1,039	2.21 - 7.38
Ovilla	4	1	0	N/A
Richardson	2,419	254	407	1.41 - 4.71
Rowlett	1,883	124	387	1.97 - 6.55
Sachse	480	46	126	2.11 - 7.05
Seagoville	2,270	69	105	1.87 - 6.24
Sunnyvale	268	46	61	2.68 - 8.92
University Park	571	482	126	1.51 - 5.04
Wilmer	297	11	30	1.89 - 6.29
Wylie	15	8	3	1.45 - 4.85
Dallas County	120,999	11,444	17,578	2.00 - 6.67

*Sum of confirmed and probable cases by date of test collection, for 14 day timeframe from: November 1 – November 14, 2020. Most recent 2 weeks not included due to average reporting lag of 9.0 days. Case numbers are only for portions of each city which are within Dallas County.

**Estimated COVID-19 prevalence rate ranges calculated based on: Fox SJ, Lachmann M, Meyers LA. "COVID-19 Campus Introduction Risks for School Reopenings" presented to the TEA on July 22, 2020. Denominator populations are only for portions of each city which are within Dallas County.

https://sites.cns.utexas.edu/sites/default/files/cid/files/covid-19_school_introduction_risks.pdf?m=1595468503

Many Thanks to:

Our area hospitals and healthcare providers for reporting lab-confirmed COVID-19 cases

Our DCHHS Case and Contact Investigations Team volunteers from:

Dallas County Medical Society

UT Southwestern Medical School

Texas A&M College of Medicine

UTHealth School of Public Health

Retired School Nurses

New COVID-19 cases are reported as a daily aggregate, with this cumulative summary updated Tuesdays and Fridays.

DCHHS COVID-19 Summaries and Case Report Form are accessible at:

<https://www.dallascounty.org/departments/dchhs/2019-novel-coronavirus.php>

DCHHS Acute Communicable Disease Epidemiology Division: COVID-19@dallascounty.org