

COVID-19 Weekly Report

Oregon's Weekly Surveillance Summary



Weekly Data Report - May 19, 2021

Table of Contents

Background	3
Weekly Report Summary	4
Clinical Characteristics and risk factors	5
Epidemiologic links	5
Figure 1. Epidemiologic link of recent COVID-19 cases by week of onset	6
Figure 2. Epidemiologic link of all COVID-19 cases by week of onset	7
Figure 3. Recent sporadic COVID-19 cases by race and week of onset.....	8
Figure 4. All sporadic COVID-19 cases by race and week of onset.....	9
Figure 5. Recent sporadic COVID-19 cases by ethnicity and week of onset	10
Figure 6. All sporadic COVID-19 cases by ethnicity and week of onset.....	11
Clinical symptoms and reported risk factors	11
Figure 7. Reported signs and symptoms for all COVID-19 cases	12
Figure 8. Reported symptoms among all COVID-19 cases by week of onset.....	13
Figure 9. Reported risk factors among all COVID-19 cases.....	14
Demographics	14
Geography.....	15
Figure 10. Case rates per 100,000 population, by county.....	15
Sex	16
Table 1. Severity and rates of COVID-19 by sex.....	16
Figure 11. Recent COVID-19 cases by sex and week of onset	17
Figure 12. All COVID-19 cases by sex and week of onset	18
Age	19
Table 2. Severity and rates of COVID-19 by age	19
Figure 13. Recent COVID-19 cases by age and week of onset.....	20
Figure 14. All COVID-19 cases (counts) by age and week of onset	21
Data are provisional and subject to change.	1

COVID-19 Weekly Report

Oregon's Weekly Surveillance Summary



Figure 15. All COVID-19 cases (case rate per 100,000) by age and week of onset	22
Race	23
Table 3. Severity and rates of COVID-19 by race	23
Figure 16. Recent COVID-19 cases by race and week of onset	24
Figure 17. All COVID-19 cases (counts) by race and week of onset	25
Figure 18. All COVID-19 cases (case rates per 100,000) by race and week of onset	26
Ethnicity	26
Table 4. Severity and rates of COVID-19 by ethnicity	26
Figure 19. Recent COVID-19 cases by ethnicity and week of onset	27
Figure 20. All COVID-19 cases by ethnicity(counts) and week of onset	28
Figure 21. All COVID-19 cases by ethnicity (case rates per 100,000) and week of onset	29
Age-adjustment	29
Table 5. Ratio of age-adjusted rates for cases, hospitalizations, and deaths by race.....	29
Table 6. Ratio of age-adjusted rates for cases, hospitalizations, and deaths by ethnicity...	30
Follow-up	31
Figure 22. Follow up attempted within 24 hours, % by race.....	31
Figure 23. Follow up attempted within 24 hours, % by ethnicity	32
Figure 24. Cases interviewed, by race	33
Figure 25. Cases interviewed, by ethnicity	33
Recovery.....	34
Figure 26. Time to recovery among symptomatic people with COVID-19.....	34
People with Intellectual and Developmental Disabilities	35
Weekly COVID-19 Hospitalizations (HOSCAP)	35
Table 7. Hospitals reporting 10 or more COVID-19 patients.....	35
Table 8. Hospitals reporting 1–9 COVID-19 patients.....	36
ZIP code	38

COVID-19 Weekly Report

Oregon's Weekly Surveillance Summary



Background

COVID-19 Weekly Report data will be finalized every Sunday at 11 p.m. PDT, and the report will be published on Wednesday. Please note that the data reported here are continually being updated. For daily up-to-date information, visit the OHA COVID-19 web page:

<https://govstatus.egov.com/OR-OHA-COVID-19>.

As of 11 p.m. Sunday, May 16, there have been 195,882 cases of COVID-19 reported to the Oregon Health Authority. Of these, 7,169 (3.7%) are “presumptive” cases—i.e., people with COVID-19-like symptoms and close contact with a confirmed case, but who did not have a confirmatory laboratory test. Though not confirmed, presumptive cases are highly likely to have COVID-19, given their specific symptoms and known exposure. Presumptive cases are encouraged to seek testing to confirm that they do have COVID-19. Presumptive cases who test positive are recategorized as confirmed cases.

These data represent a snapshot of COVID-19 risk factors and clinical and demographic characteristics of cases, and they include data on cases with pending investigations. Not all cases have been interviewed at the time of this report. The data shown in this report come from Oregon’s electronic disease surveillance system for reportable diseases.

During the week of May 9–May 15¹ 103,155 tests for COVID-19 were performed on Oregonians; of these, 6.4% had a positive result.² This figure represents a “test-based” method, whereby all electronic lab reports received by OHA are used to calculate percent positivity.³ Detailed tables of the number of tests and percent positivity can be found online at

<https://public.tableau.com/profile/oregon.health.authority.covid.19#!/vizhome/OregonHealthAuthorityCOVID-19DataDashboard/OregonsCOVID-19ELRsbyCounty>

¹ This date range aligns with CDC’s “MMWR week.”

² Does not include antibody (serology) tests.

³ www.cdc.gov/coronavirus/2019-ncov/lab/resources/calculating-percent-positivity.html

COVID-19 Weekly Report

Oregon's Weekly Surveillance Summary



Weekly Report Summary

During Monday, May 10, through Sunday, May 16, 2021, OHA recorded 4,108 new cases of COVID-19 infection, down 16% from the previous week. Testing decreased by 7%, while test positivity increased from 6.1% to 6.4%. In recent weeks the proportion of cases classified as “sporadic” has consistently exceeded 50%.

Hospitalizations rose from 245 last week to 265 this week. Fifty-seven Oregonians died in association with COVID-19 last week—the highest weekly death toll in 10 weeks. Of the 195,882 cases reported in Oregon to date, 10,758 (5.5%) have been hospitalized, and 2,590 (1.3%) have died. Data on mortality in Oregon, including deaths associated with COVID-19, are available at <https://public.tableau.com/profile/oha.center.for.health.statistics>.

Hospitalization and death rates increase with age (Table 2). Although only 4.2% of Oregonians are 80 years of age or older, they have accounted for 1,979 (18%) of the COVID-19-associated hospitalizations and 1,331 (51%) of the COVID-19-associated deaths. Persons 70 years of age and older make up 12.4% of Oregon’s population, but they have accounted for 4,124 (38%) of the COVID-19 hospitalizations and 1,946 (75%) of the COVID-19-associated deaths. These overall proportions have fallen slightly since March as vaccination of persons in these age groups rose to 74% and 78%, respectively. Additional data are available at <https://public.tableau.com/profile/oregon.health.authority.covid.19#!/vizhome/OregonCOVID-19CaseDemographicsandDiseaseSeverityStatewide/DemographicData>.

Persons of Hispanic ethnicity have been disproportionately affected by COVID-19 (Table 4): they account for 13% of Oregon’s population but 31% of cases of known ethnicity reported to date. This proportion has fallen in recent months, however: before March 2021, 34% of reported cases of known ethnicity were Hispanic; since then, 19% have been Hispanic.

Table 3 shows that, by race, the highest crude COVID-19 case-fatality rate (CFR)—1.7%—is among whites, with lower CFRs in other races. Similarly, Table 4 shows a lower CFR among Hispanics than among non-Hispanics. However, non-white and Hispanic populations in Oregon are younger overall, which lowers the crude CFRs in these racial and ethnic groups. Age adjustment displays how rates would compare if the age distribution of each racial and ethnic group resembled that of the population of the United States in the year 2000. Table 5 shows that COVID-19 hospitalization rates in non-white populations have been 1.3 to 9.4 times those of whites and death rates 1.1 to 8.4 times those of whites. Table 6 shows that the age-adjusted hospitalization rate among Hispanics in Oregon has been 3.7 times that of non-Hispanics and the death rate 2.9 times as high.

COVID-19 Weekly Report

Oregon's Weekly Surveillance Summary



Additional data are available at

<https://public.tableau.com/profile/oregon.health.authority.covid.19#!/vizhome/OregonCOVID-19CaseDemographicsandDiseaseSeverityStatewide/DemographicData>.

Clinical Characteristics and risk factors

This section of the report describes the epidemiology of Oregon's COVID-19 cases, including indicators of COVID-19 transmission, common symptoms experienced by COVID-19 cases, and demographic breakdowns for sex, age, race, and ethnicity. Indicators of disease severity, specifically hospitalizations and deaths, are included in the tables.

Epidemiologic links

The figures below show the epidemiologic link of COVID-19 cases. Public health classifies all cases as part of a household, part of an outbreak, part of a cluster, a close contact of another case, or sporadic. Sporadic indicates that a case was not linked to a known source of COVID-19. Lower numbers of sporadic cases suggest lower community spread of COVID-19. Figure 1 focuses on recent cases of COVID-19, and allows for the easy comparison of different types of epidemiologic link. Figure 2 includes all COVID-19 cases, showing the pattern of epidemiologic links since the first cases were identified in Oregon. Figures 3 and 4 show sporadic cases by race, and figures 5 and 6 show sporadic cases by ethnicity. Looking at the data by race and ethnicity helps public health to identify disparities.

Epidemiologic link designations:

- Sporadic⁴ Cases who do not have known exposure to another case or outbreak.
- Outbreak: Cases who have a shared, defined exposure with at least one other case. For example, a defined exposure could be an event, a workplace, a congregate facility, etc.
- Cluster: Cases who had contact with another case, but the exposure is not well defined. For example, cases from two households who interacted many times prior to illness onset.
- Household: Cases who were exposed to another case in their household.

⁴ Due to the lag between case reporting and case investigation, the proportion of cases categorized as sporadic is high in the most recent week or more; some of these cases will be recategorized after investigation is completed.

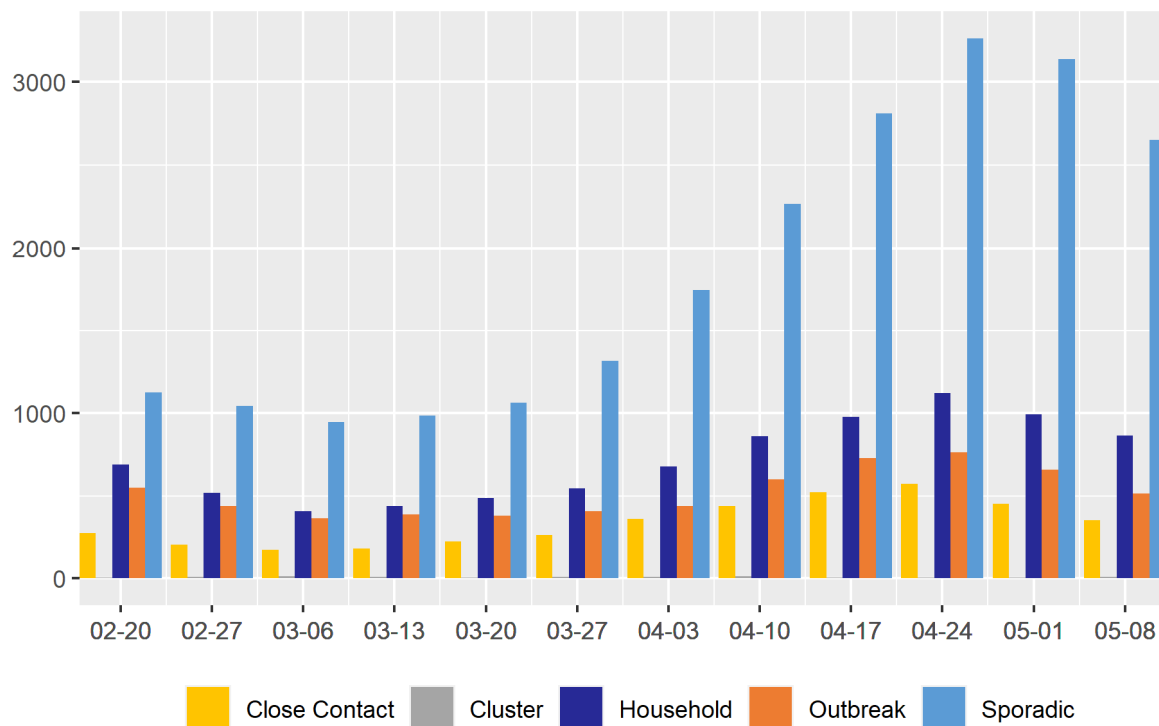
COVID-19 Weekly Report

Oregon's Weekly Surveillance Summary



- Close contact: Cases who were exposed to another case, not in their household. This designation was added on 7/15.

Figure 1. Epidemiologic link of recent COVID-19 cases by week of onset

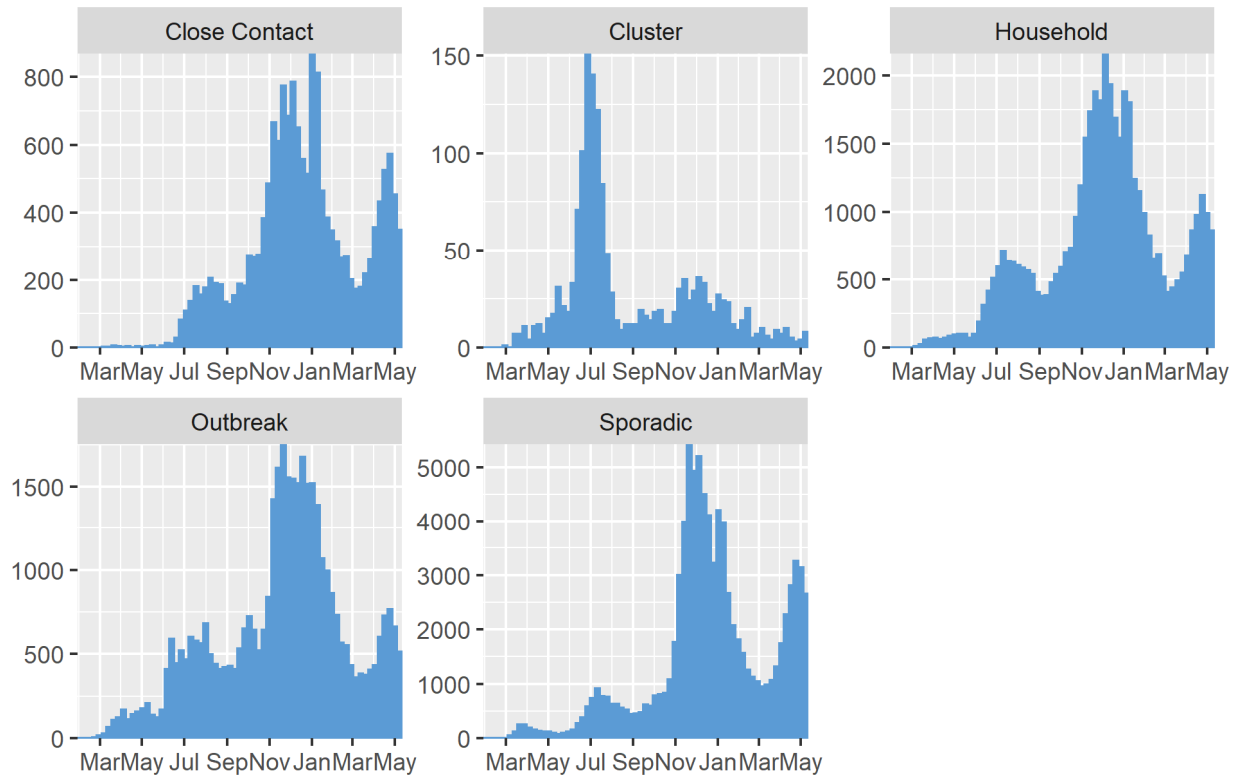


COVID-19 Weekly Report

Oregon's Weekly Surveillance Summary



Figure 2. Epidemiologic link of all COVID-19 cases by week of onset



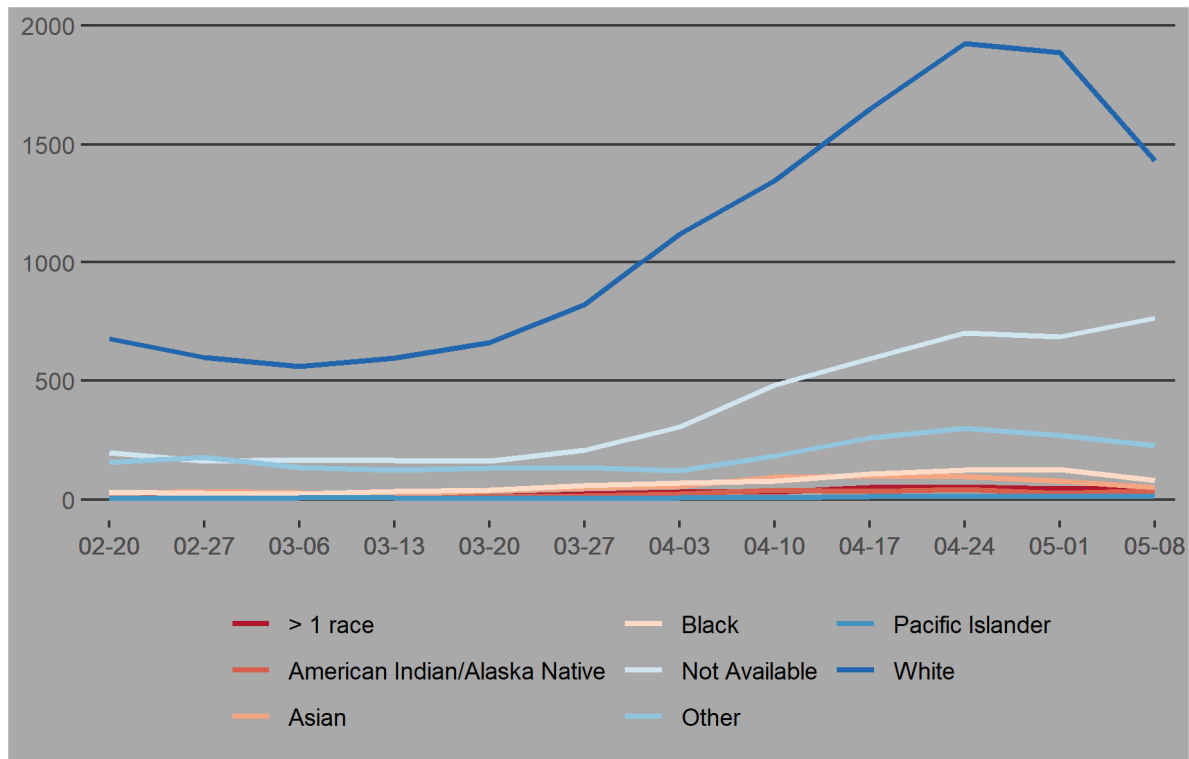
Data are provisional and subject to change.

COVID-19 Weekly Report

Oregon's Weekly Surveillance Summary



Figure 3. Recent sporadic COVID-19 cases by race and week of onset



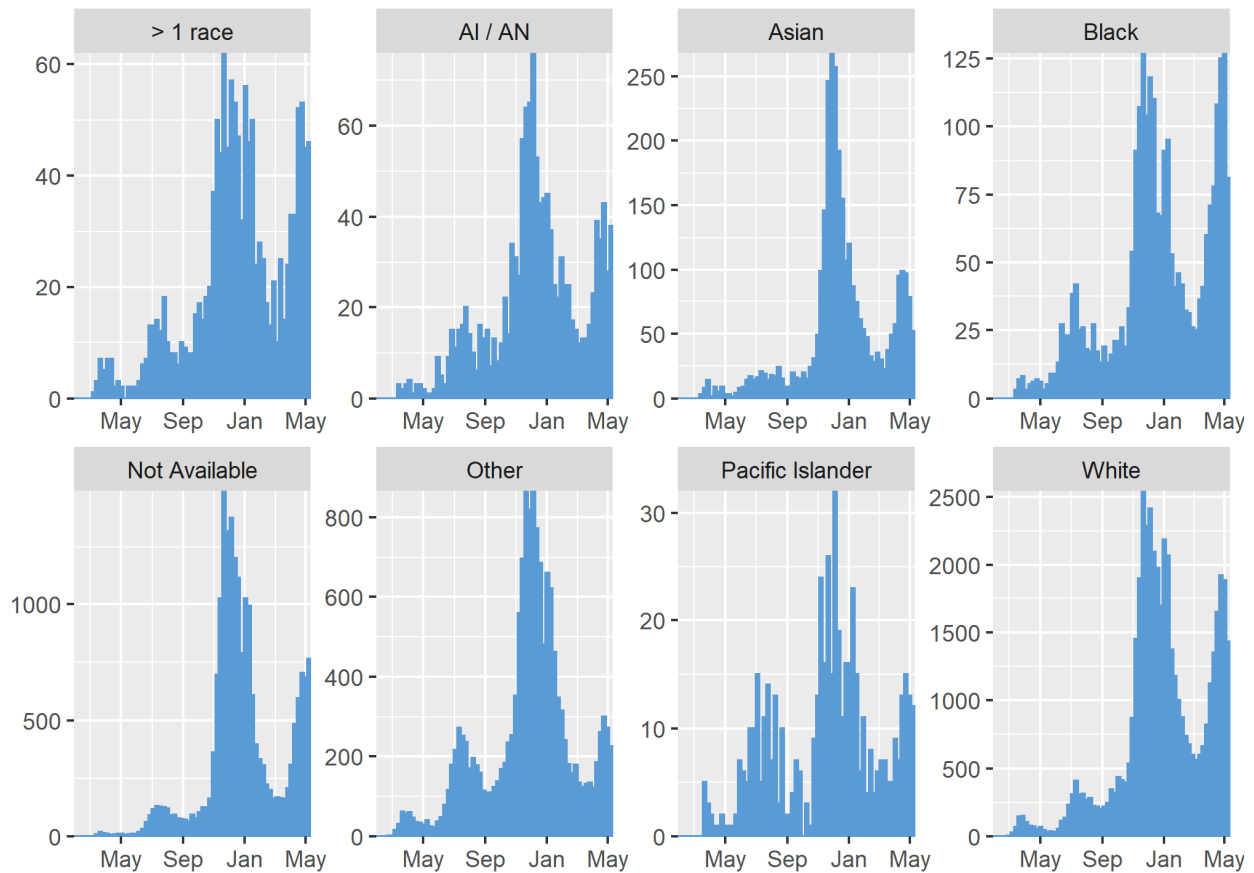
Data are provisional and subject to change.

COVID-19 Weekly Report

Oregon's Weekly Surveillance Summary



Figure 4. All sporadic COVID-19 cases by race and week of onset



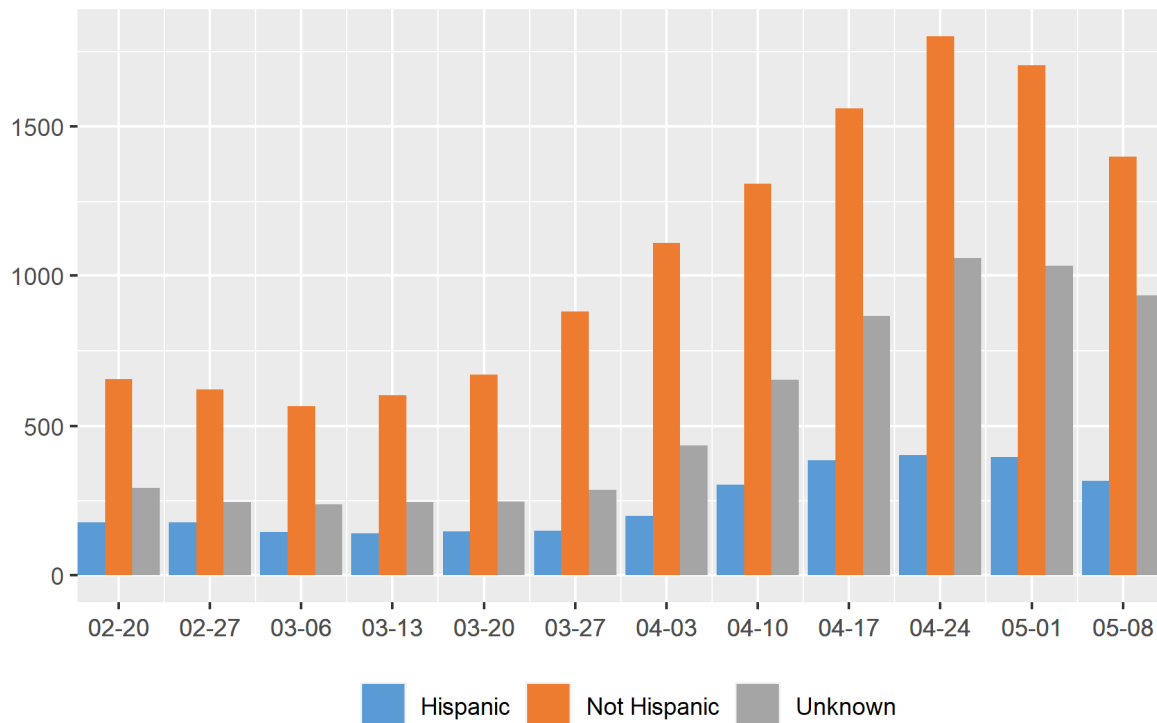
Data are provisional and subject to change.

COVID-19 Weekly Report

Oregon's Weekly Surveillance Summary



Figure 5. Recent sporadic COVID-19 cases by ethnicity and week of onset

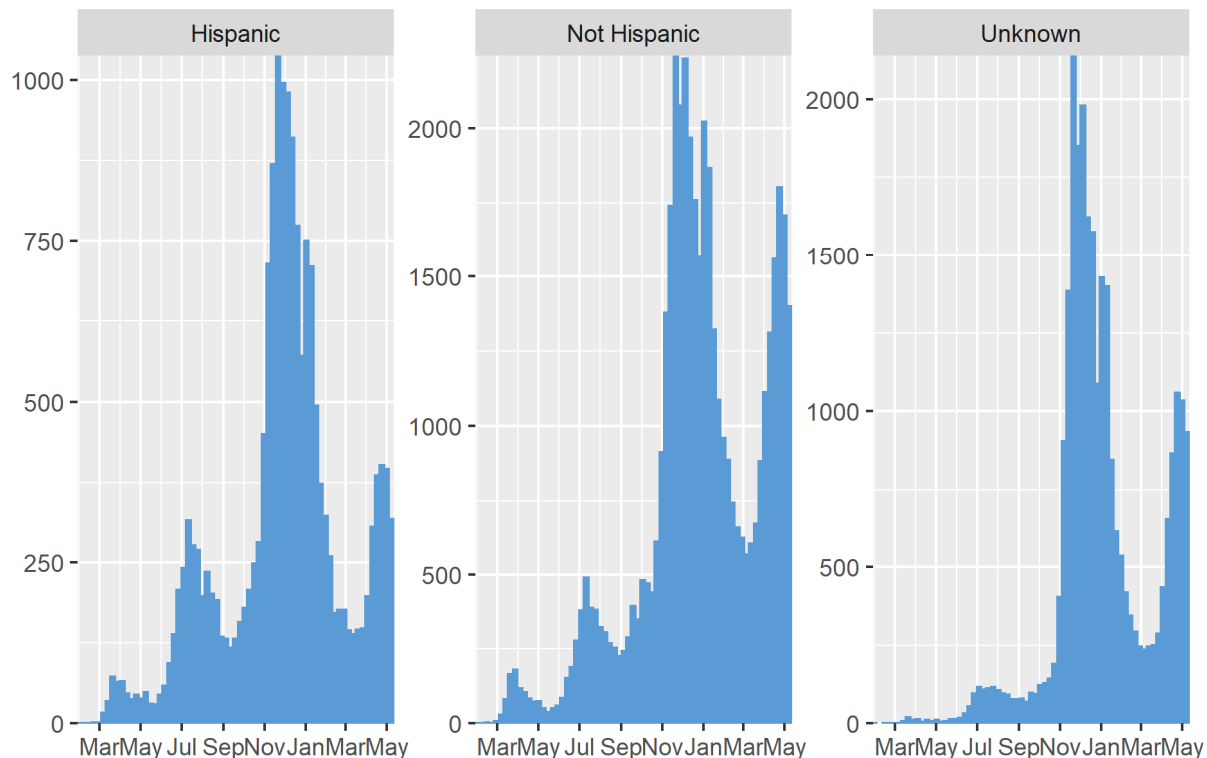


COVID-19 Weekly Report

Oregon's Weekly Surveillance Summary



Figure 6. All sporadic COVID-19 cases by ethnicity and week of onset



Clinical symptoms and reported risk factors

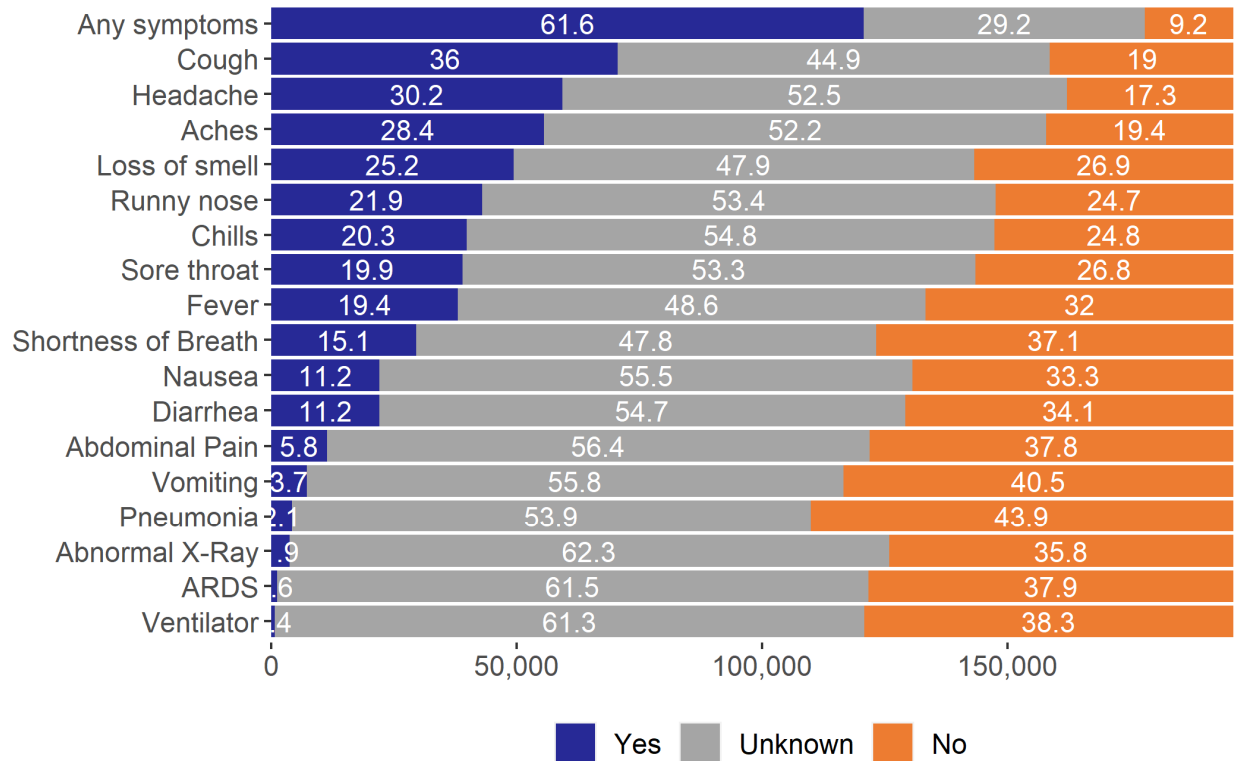
Figure 7 provides information on signs and symptoms from all COVID-19 cases. Of 195,882 cases, 120,701 (61.6%) reported having signs and symptoms of COVID-19. The most commonly reported symptoms are cough (n=70,611, 36%) and headache (n=59,248, 30.2%). Figure 8 provides information on the percentage of COVID-19 cases that report symptoms over time. Figure 9 provides information on risk factors from all COVID-19 cases. The most common risk factors are having contact with a known COVID-19 case prior to symptom onset (n=102,400, 52.3%) and having underlying medical conditions (n=105,488, 53.9%). Note that a person may report more than one sign/symptom or risk factor. Where displayed by week in this report, case data are categorized by week of reported symptom onset, not by date of case report. This results in reduced numbers in the most recent week or more due to reporting lags.

COVID-19 Weekly Report

Oregon's Weekly Surveillance Summary



Figure 7. Reported signs and symptoms for all COVID-19 cases

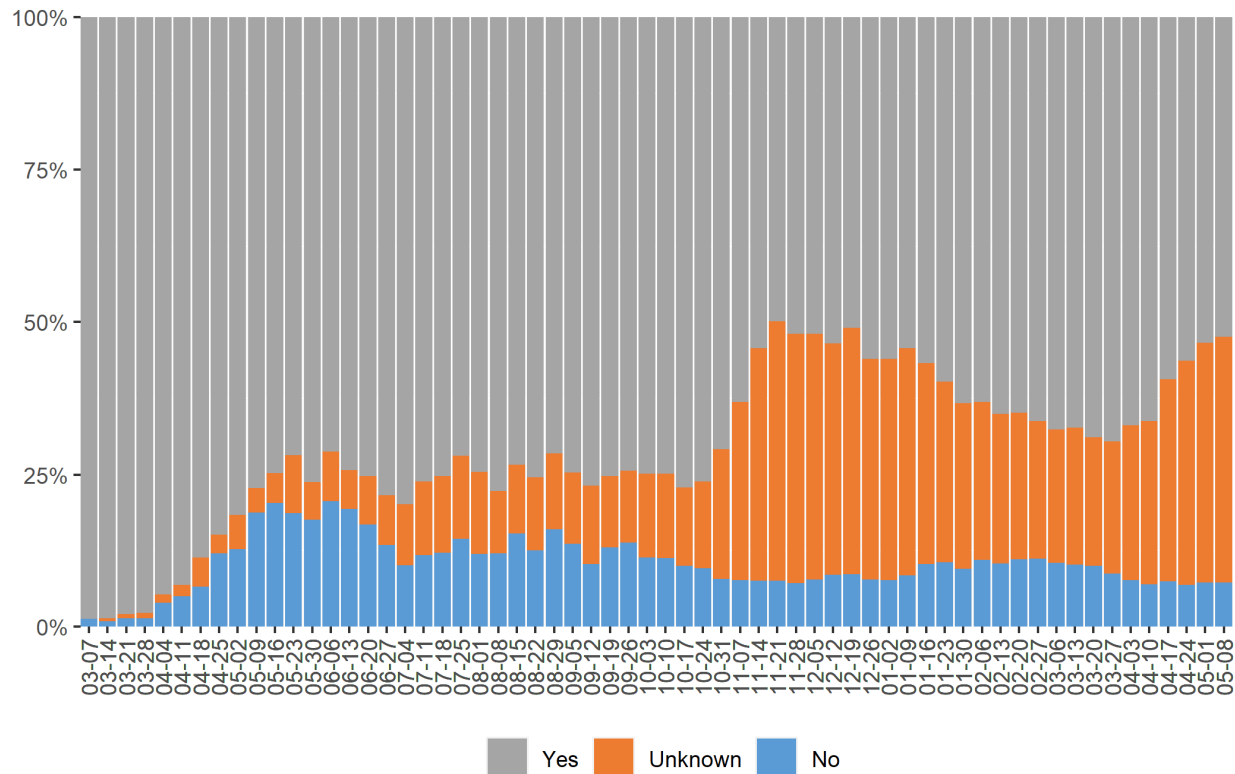


COVID-19 Weekly Report

Oregon's Weekly Surveillance Summary



Figure 8. Reported symptoms among all COVID-19 cases by week of onset

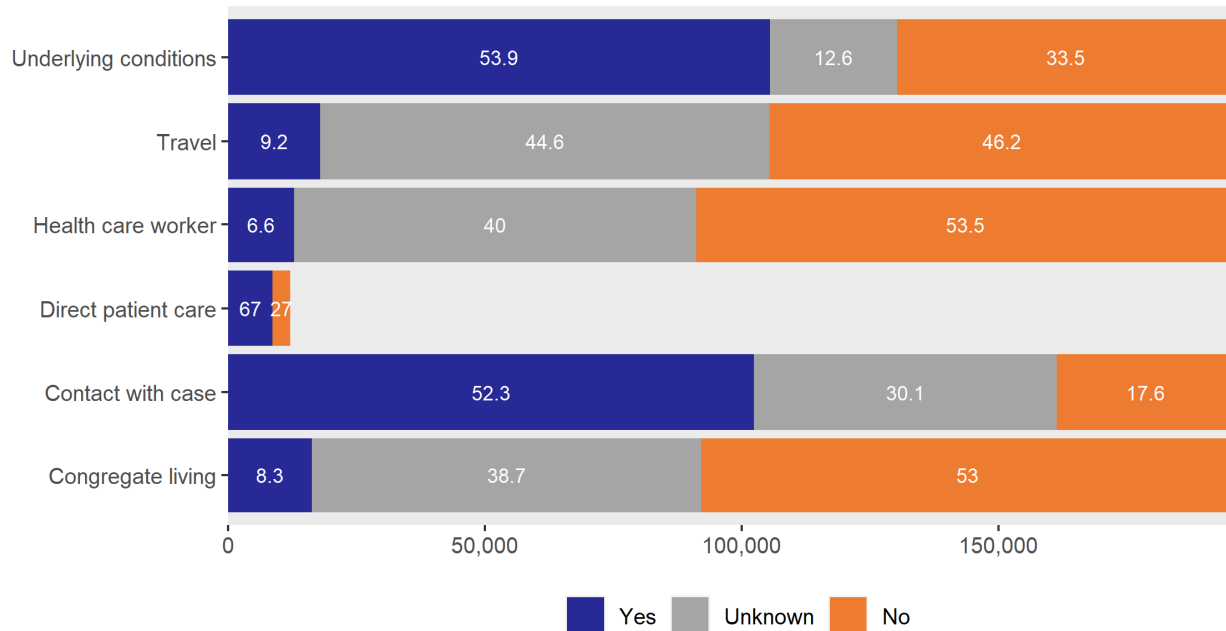


COVID-19 Weekly Report

Oregon's Weekly Surveillance Summary



Figure 9. Reported risk factors among all COVID-19 cases



Risk factor definitions:

- Congregate living situations include, but are not limited to, long-term care facilities, group homes, prisons, and shelters. Data include people with confirmed cases who live or work in congregate living situations.
- Direct patient care is only asked if a case is a healthcare worker or volunteer. The denominator is the number of healthcare workers or volunteers.
- Underlying medical conditions include cardiovascular disease, chronic liver disease, chronic lung disease, chronic renal disease, current or former smoker, diabetes mellitus, immunocompromised condition, neurologic and neurodevelopmental conditions, obesity, or other chronic diseases.

Demographics

The following tables and figures show the demographic characteristics for all COVID-19 cases. The tables show case counts, case rates, and indicators of severity by sex, age, race and

COVID-19 Weekly Report

Oregon's Weekly Surveillance Summary

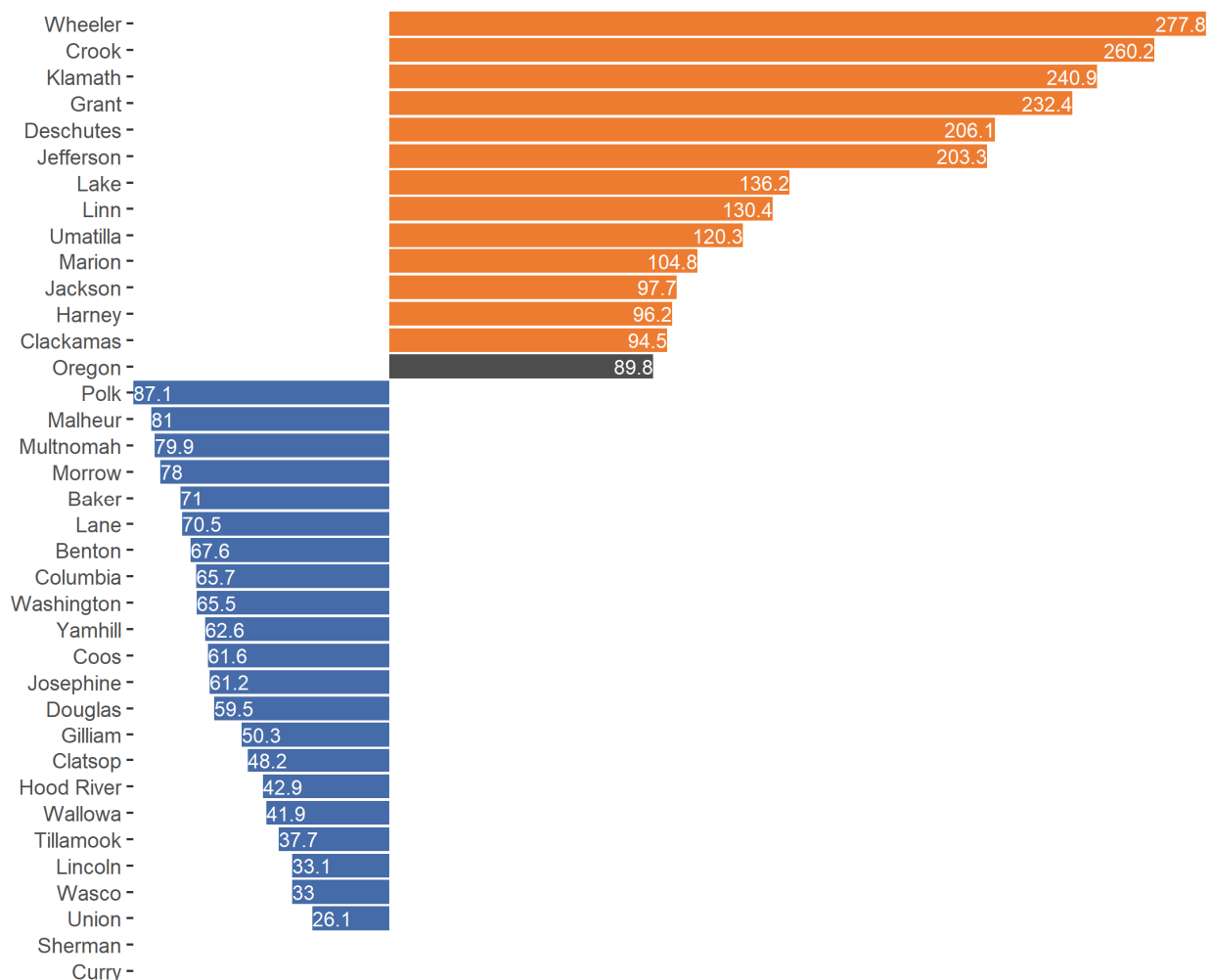


ethnicity. The figures show cases over time, by week of onset, for sex, age, race, and ethnicity. Figure 10 displays case rates by county, in comparison to the case rate for all of Oregon.

Geography

The following figure shows case rates by county for the most recently completed MMWR week, which is currently May 9 to May 15, 2021. Cases are displayed using the date that the case became known to public health.

Figure 10. Case rates per 100,000 population, by county



Data are provisional and subject to change.

COVID-19 Weekly Report

Oregon's Weekly Surveillance Summary



1. Counties that had case rates above the case rate for the state are displayed in orange. Counties that had case rates below the case rate for the state are displayed in blue.
2. Counties that had zero cases in the time period displayed appear on the list, but do not have a bar to display.

Sex

Table 1. Severity and rates of COVID-19 by sex

Sex	Cases	% of total cases	Cases per 100,000	Hospitalized	% Hospitalized	Deaths	Case fatality
Female	99,210	50.6	4586.8	5,059	5.1	1,195	1.2
Male	94,682	48.3	4497.7	5,638	6.0	1,382	1.5
Non-Binary	19	0		0	0.0	0	0.0
Not Available	1,971	1.0		61	3.1	13	0.7
Total	195,882	100.0	4589.5	10,758	5.5	2,590	1.3

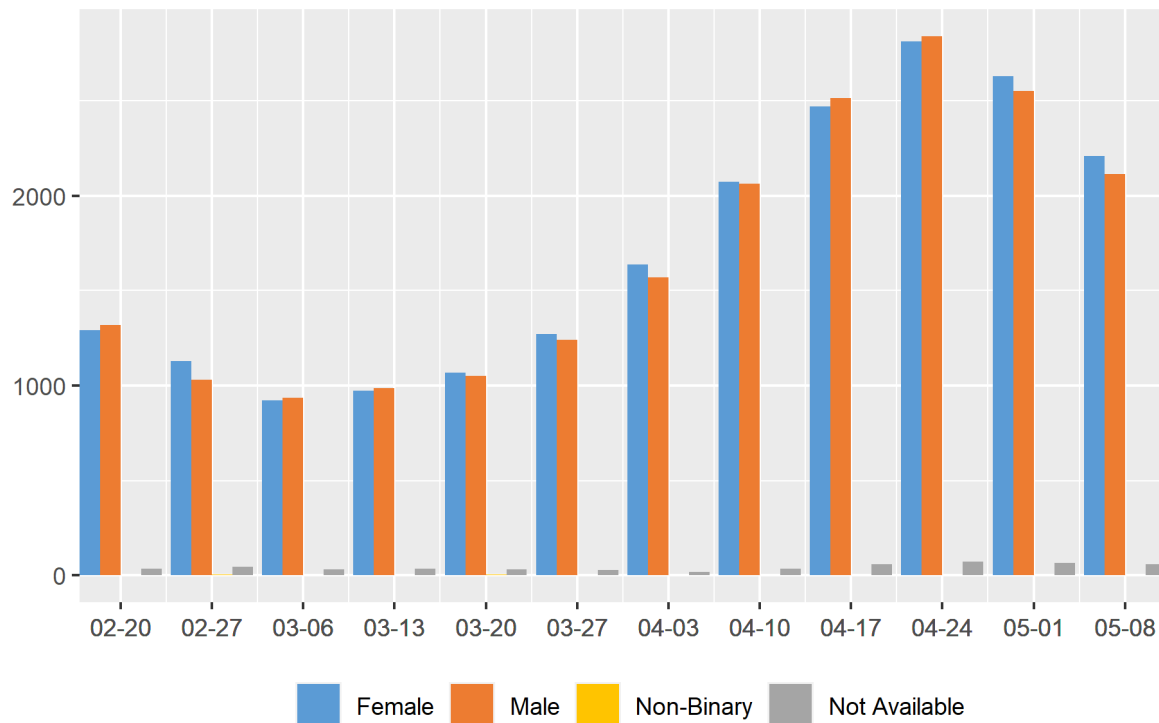
1. Rates are calculated using population estimates from the 2020 Annual Population Report from Portland State University's College of Urban & Public Affairs Population Research Center and 2019 housing and demographic data from the U.S. Census Bureau's American Community Survey (ACS).

COVID-19 Weekly Report

Oregon's Weekly Surveillance Summary



Figure 11. Recent COVID-19 cases by sex and week of onset

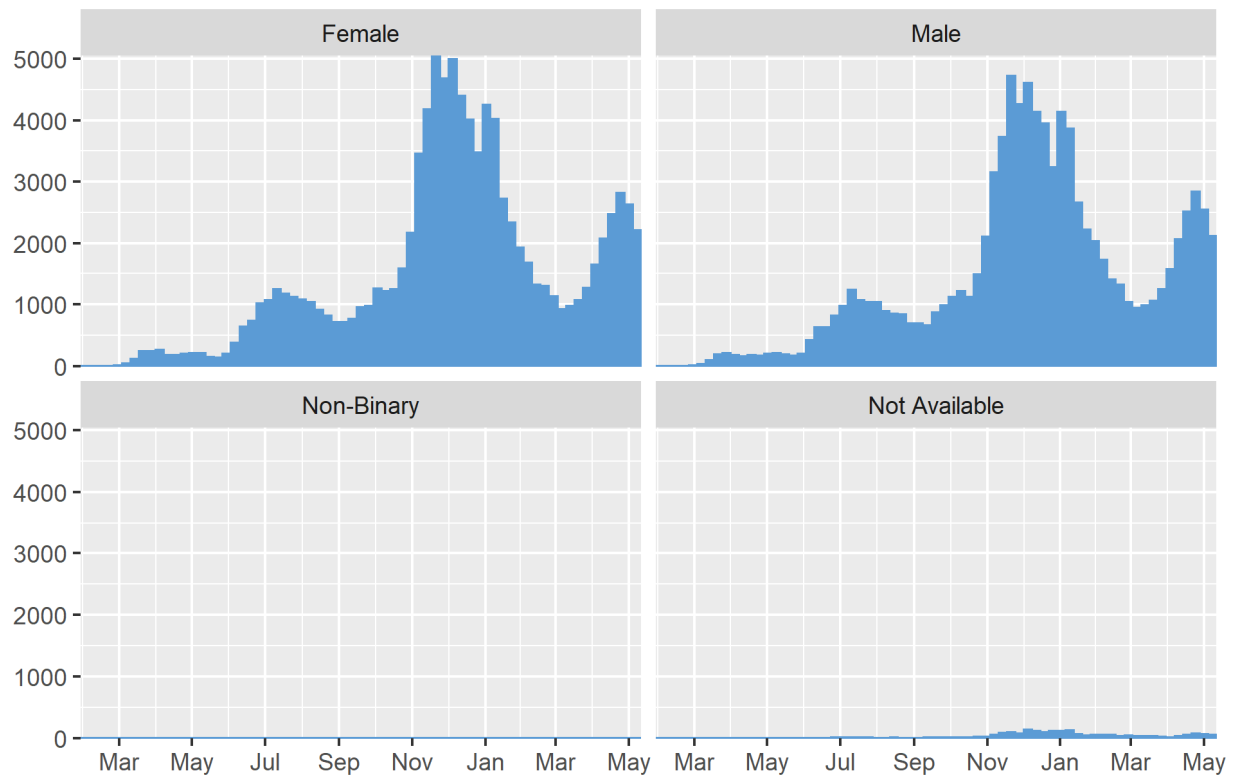


COVID-19 Weekly Report

Oregon's Weekly Surveillance Summary



Figure 12. All COVID-19 cases by sex and week of onset



Data are provisional and subject to change.

COVID-19 Weekly Report

Oregon's Weekly Surveillance Summary



Age

Table 2. Severity and rates of COVID-19 by age

Age group	Cases	% of total cases	Cases per 100,000	Hospitalized	% Hospitalized	Deaths	Case fatality
0-9	10,663	5.4	2274	121	1.1	1	0.0
10-19	21,821	11.1	4324.2	180	0.8	1	0.0
20-29	41,234	21.1	7487.7	660	1.6	6	0.0
30-39	34,051	17.4	5744.4	818	2.4	21	0.1
40-49	30,126	15.4	5583.5	1,113	3.7	65	0.2
50-59	24,950	12.7	4673.8	1,648	6.6	161	0.6
60-69	16,559	8.5	3023.4	2,072	12.5	389	2.3
70-79	9,480	4.8	2694.3	2,145	22.6	615	6.5
80+	6,602	3.4	3706.2	1,979	30.0	1,331	20.2
Not Available	396	0.2		22	5.6	0	0.0
Total	195,882	100.0	4589.5	10,758	5.5	2,590	1.3

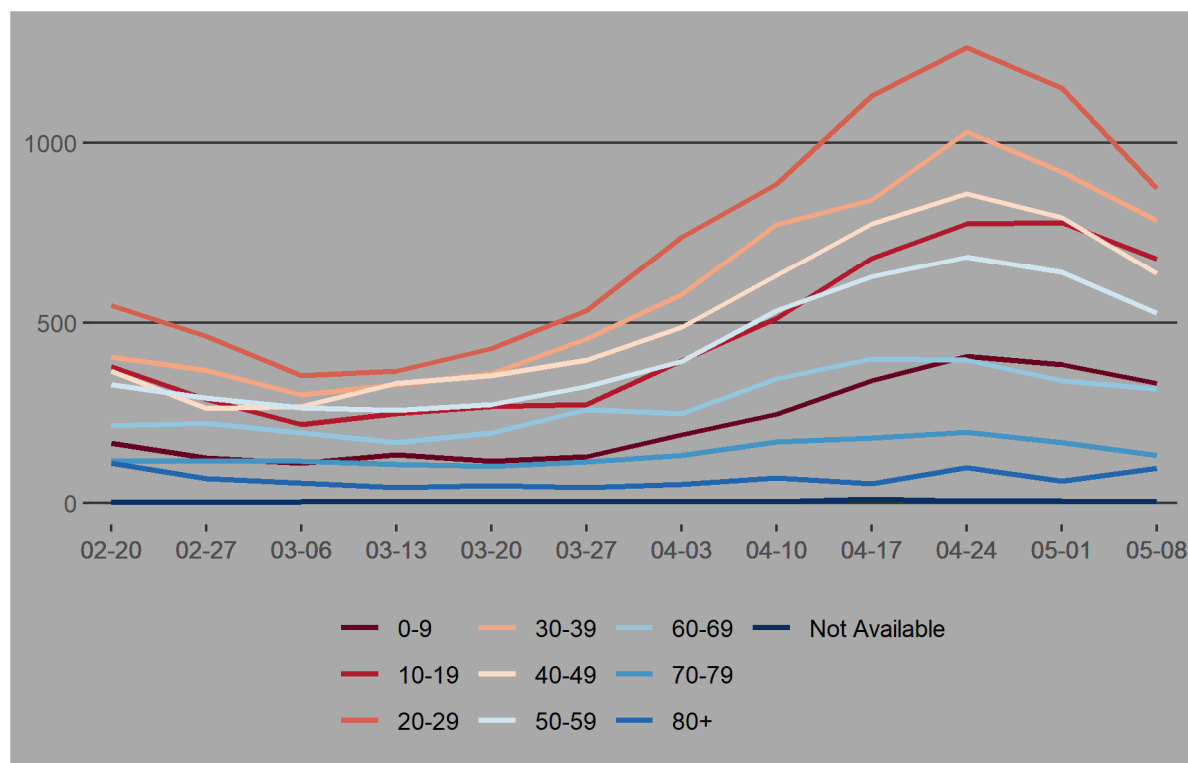
1. Rates are calculated using population estimates from the 2020 Annual Population Report from Portland State University's College of Urban & Public Affairs Population Research Center and 2019 housing and demographic data from the U.S. Census Bureau's American Community Survey (ACS).

COVID-19 Weekly Report

Oregon's Weekly Surveillance Summary



Figure 13. Recent COVID-19 cases by age and week of onset



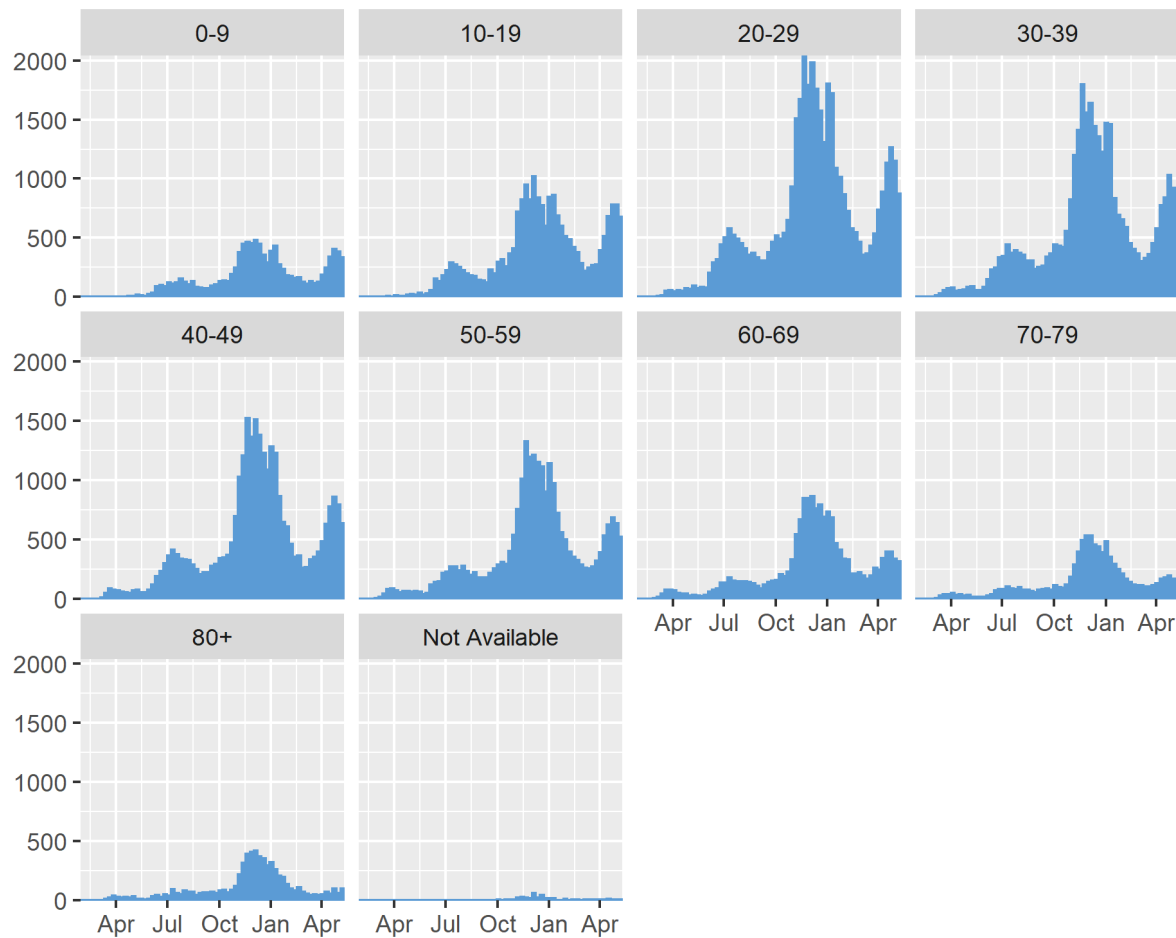
Data are provisional and subject to change.

COVID-19 Weekly Report

Oregon's Weekly Surveillance Summary



Figure 14. All COVID-19 cases (counts) by age and week of onset



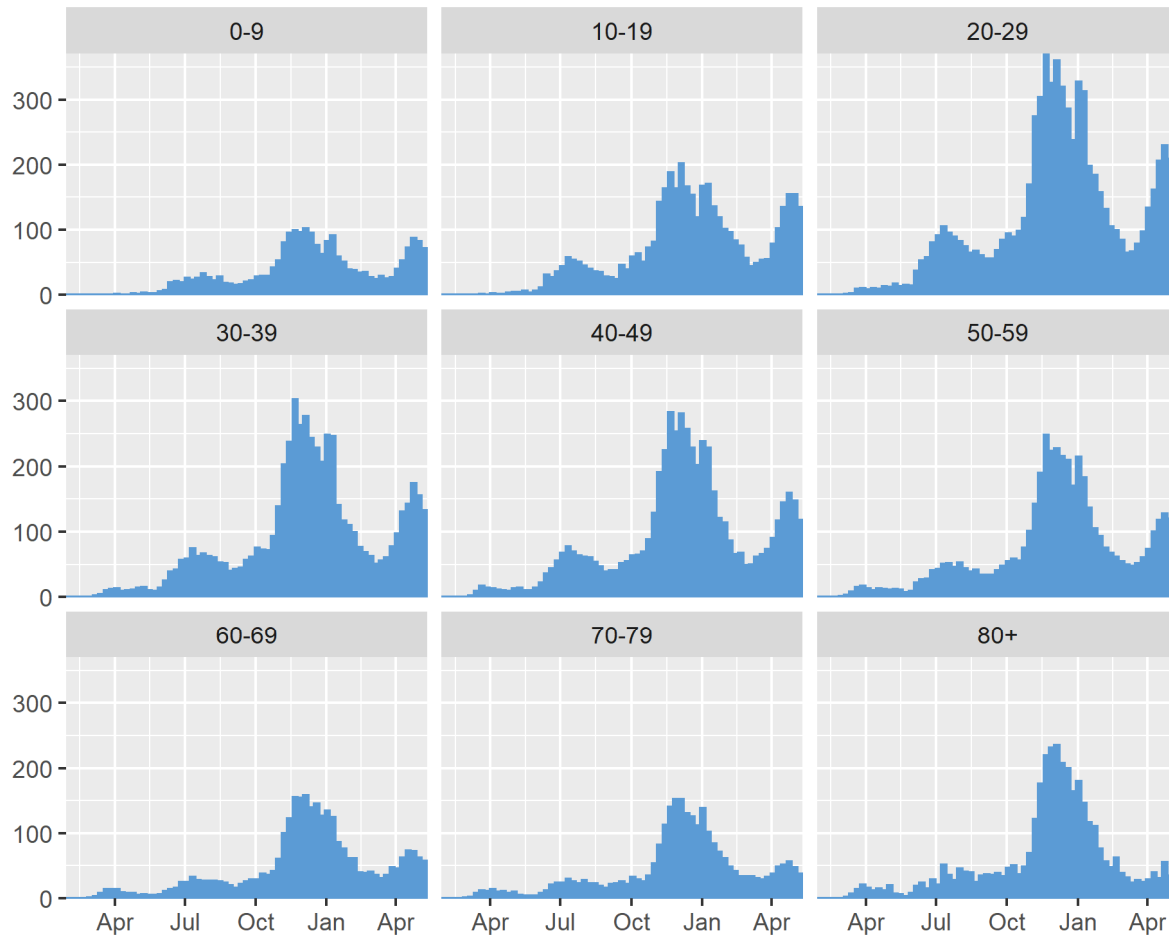
Data are provisional and subject to change.

COVID-19 Weekly Report

Oregon's Weekly Surveillance Summary



Figure 15. All COVID-19 cases (case rate per 100,000) by age and week of onset



Data are provisional and subject to change.

COVID-19 Weekly Report

Oregon's Weekly Surveillance Summary



Race

Table 3. Severity and rates of COVID-19 by race

Race	Cases	% of total cases	Cases per 100,000	Hospitalized	% Hospitalized	Deaths	Case fatality
> 1 race	3,398	1.7	1657.6	205	6.0	53	1.6
American Indian/Alaska Native	3,375	1.7	6795.0	263	7.8	45	1.3
Asian	5,943	3.0	3184.5	356	6.0	62	1.0
Black	5,113	2.6	6288.1	361	7.1	53	1.0
Not Available	35,436	18.1		972	2.7	410	1.2
Other	40,742	20.8		1,819	4.5	196	0.5
Pacific Islander	1,629	0.8	9481.1	163	10.0	21	1.3
White	100,246	51.2	2786.6	6,619	6.6	1,750	1.7
Total	195,882	100.0	4589.5	10,758	5.5	2,590	1.3

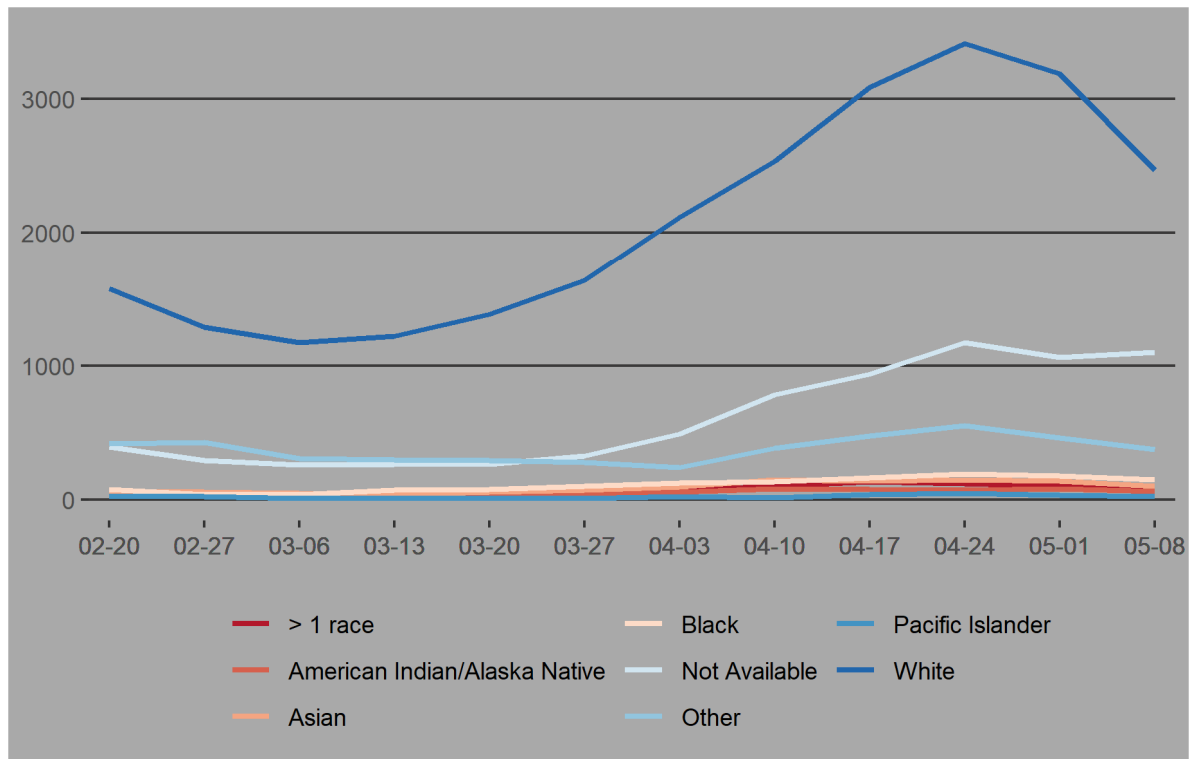
1. During the case investigation, people are asked to self-report their race, ethnicity, tribal affiliation, country of origin, or ancestry.
2. Rates are calculated using population estimates from the 2020 Annual Population Report from Portland State University's College of Urban & Public Affairs Population Research Center and 2019 housing and demographic data from the U.S. Census Bureau's American Community Survey (ACS).
3. Persons for which race information was not available were not included in these estimates. The number of persons with race data unavailable can be found in Table 3.
4. 36,504 (89.6%) of the 40,742 persons who identify as "Other" race also self-identify as Hispanic or Latino.

COVID-19 Weekly Report

Oregon's Weekly Surveillance Summary



Figure 16. Recent COVID-19 cases by race and week of onset



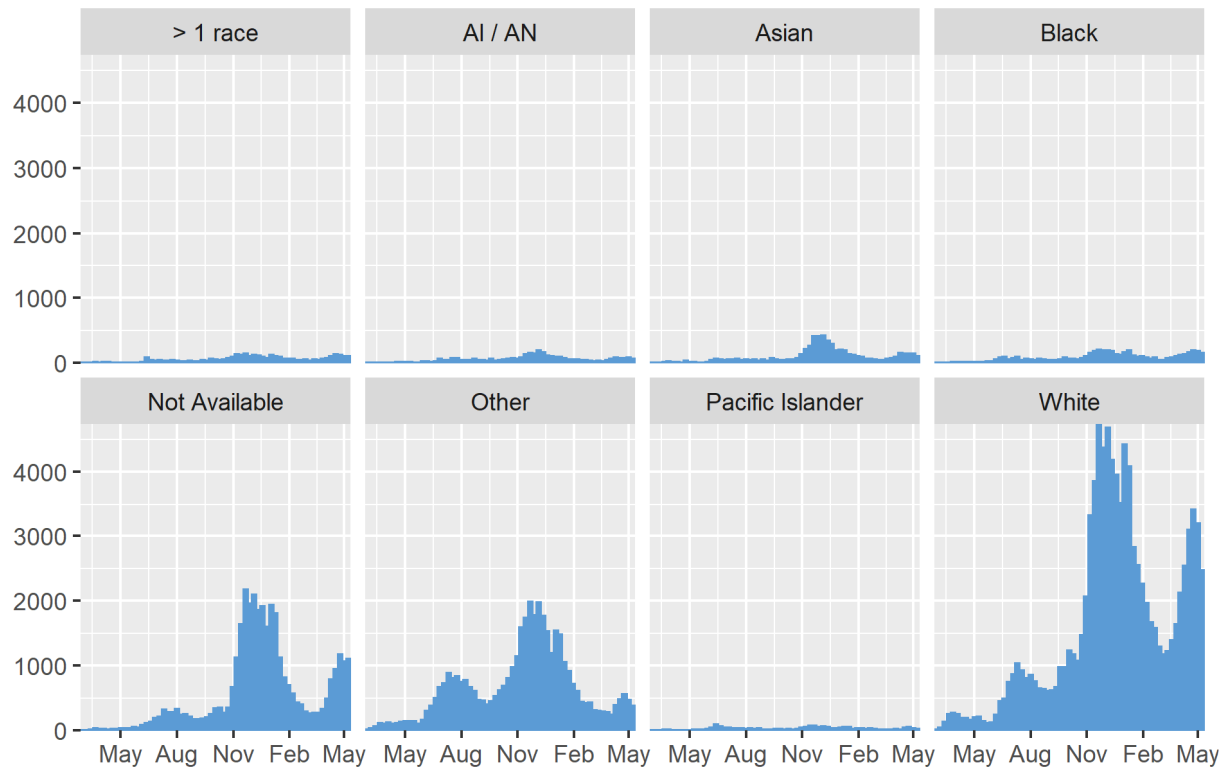
Data are provisional and subject to change.

COVID-19 Weekly Report

Oregon's Weekly Surveillance Summary



Figure 17. All COVID-19 cases (counts) by race and week of onset



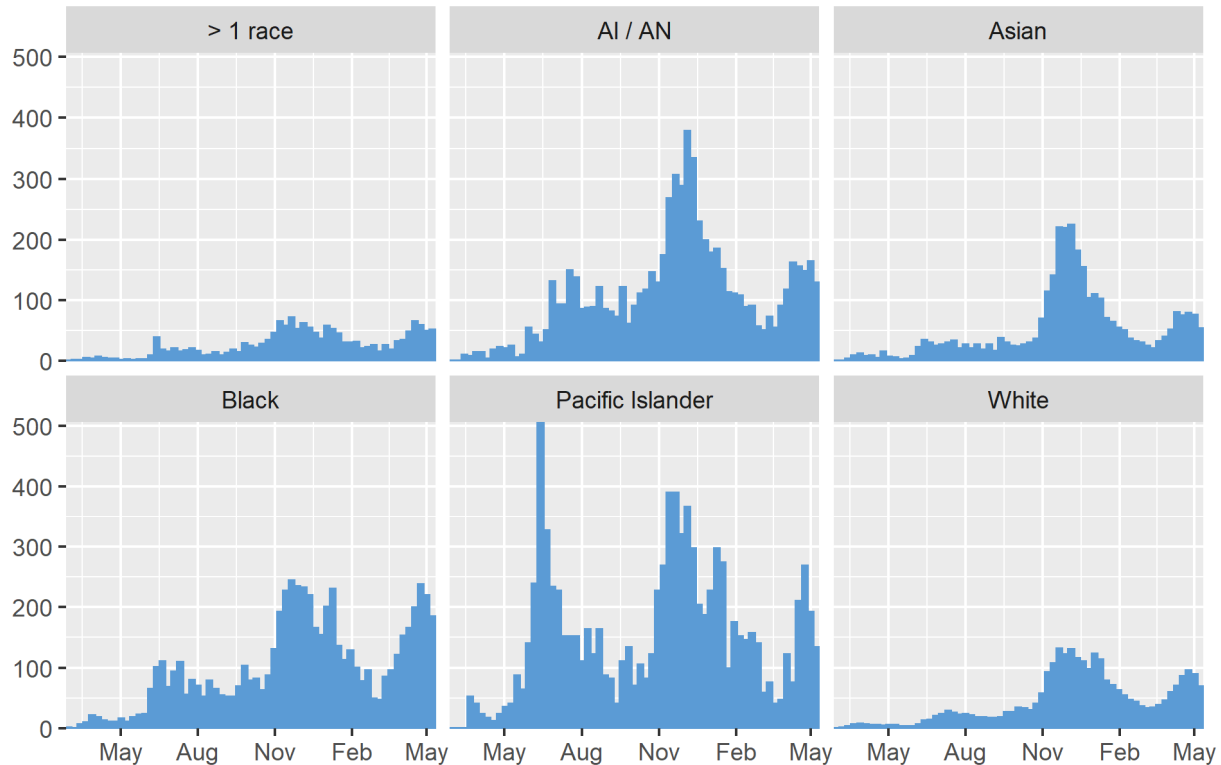
Data are provisional and subject to change.

COVID-19 Weekly Report

Oregon's Weekly Surveillance Summary



Figure 18. All COVID-19 cases (case rates per 100,000) by race and week of onset



Ethnicity

Table 4. Severity and rates of COVID-19 by ethnicity

Ethnicity	Cases	% of total cases	Cases per 100,000	Hospitalized	% Hospitalized	Deaths	Case fatality
Hispanic	46,607	23.8	8,400.0	2,033	4.4	222	0.5
Not Hispanic	102,115	52.1	2,750.0	6,767	6.6	1,673	1.6
Unknown	47,160	24.1		1,958	4.2	695	1.5
Total	195,882	100.0	4,589.5	10,758	5.5	2,590	1.3

Data are provisional and subject to change.

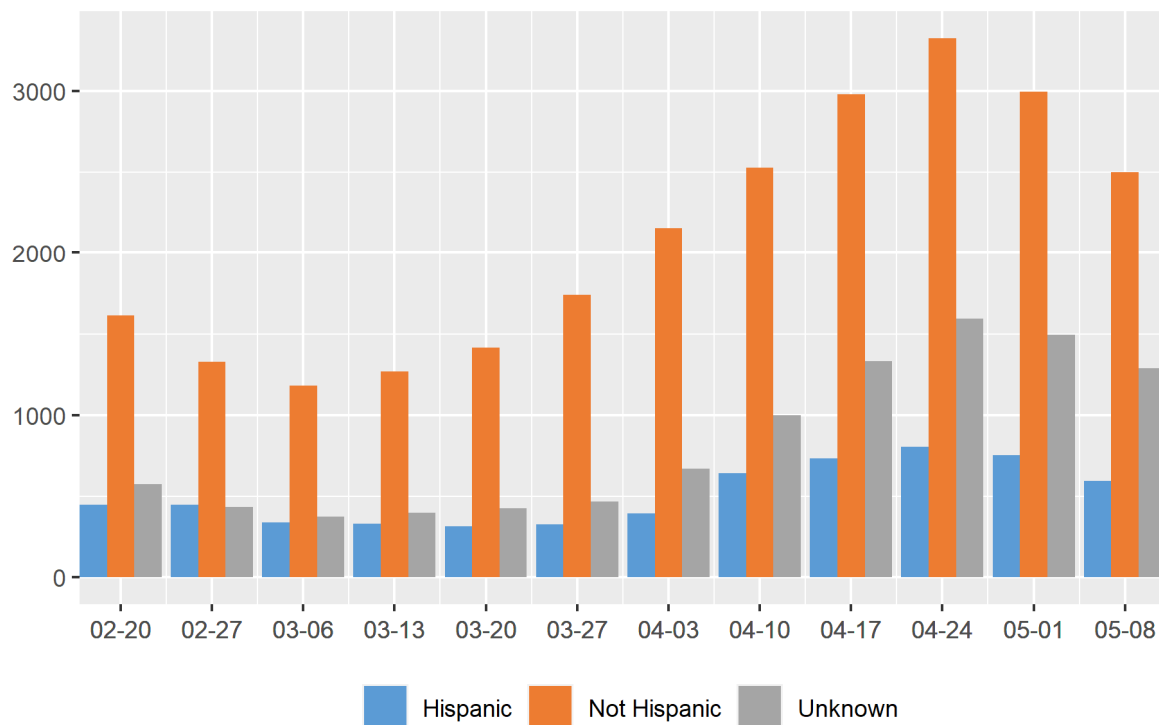
COVID-19 Weekly Report

Oregon's Weekly Surveillance Summary



1. Rates are calculated using population estimates from the 2020 Annual Population Report from Portland State University's College of Urban & Public Affairs Population Research Center and 2019 housing and demographic data from the U.S. Census Bureau's American Community Survey (ACS).

Figure 19. Recent COVID-19 cases by ethnicity and week of onset

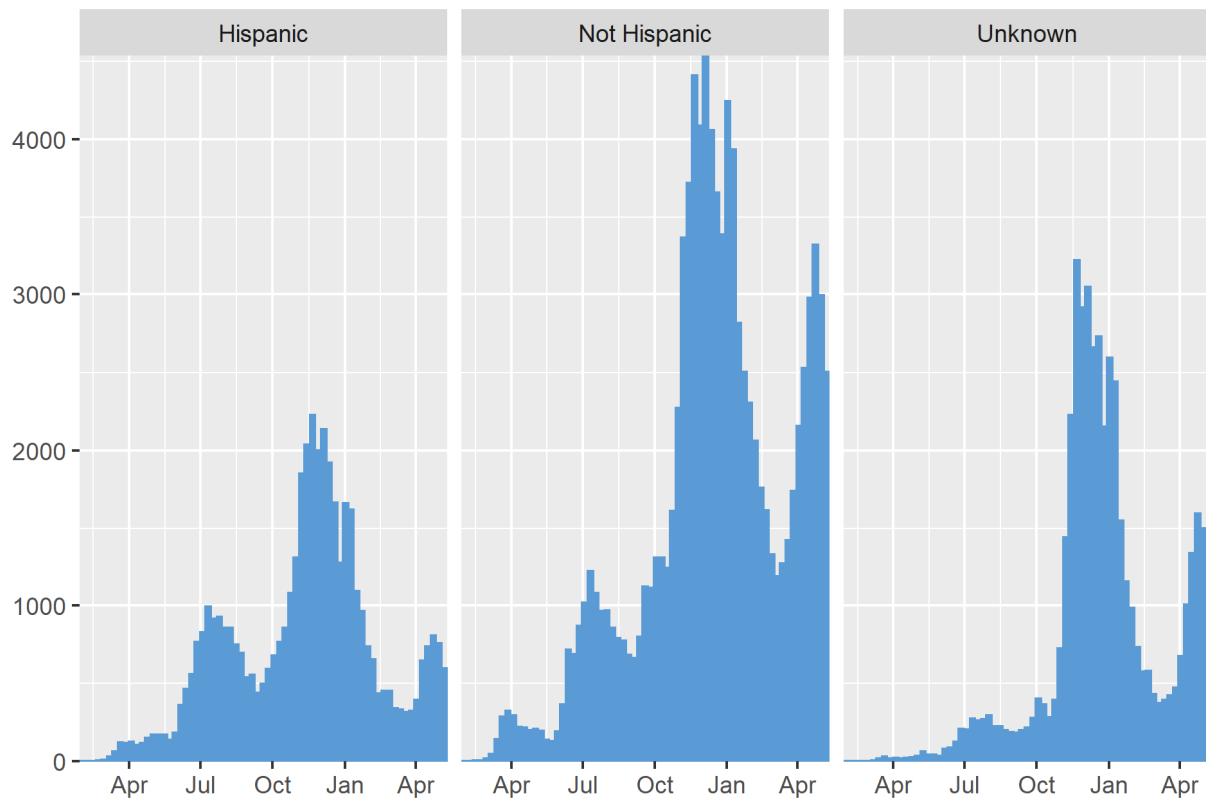


COVID-19 Weekly Report

Oregon's Weekly Surveillance Summary



Figure 20. All COVID-19 cases by ethnicity(counts) and week of onset



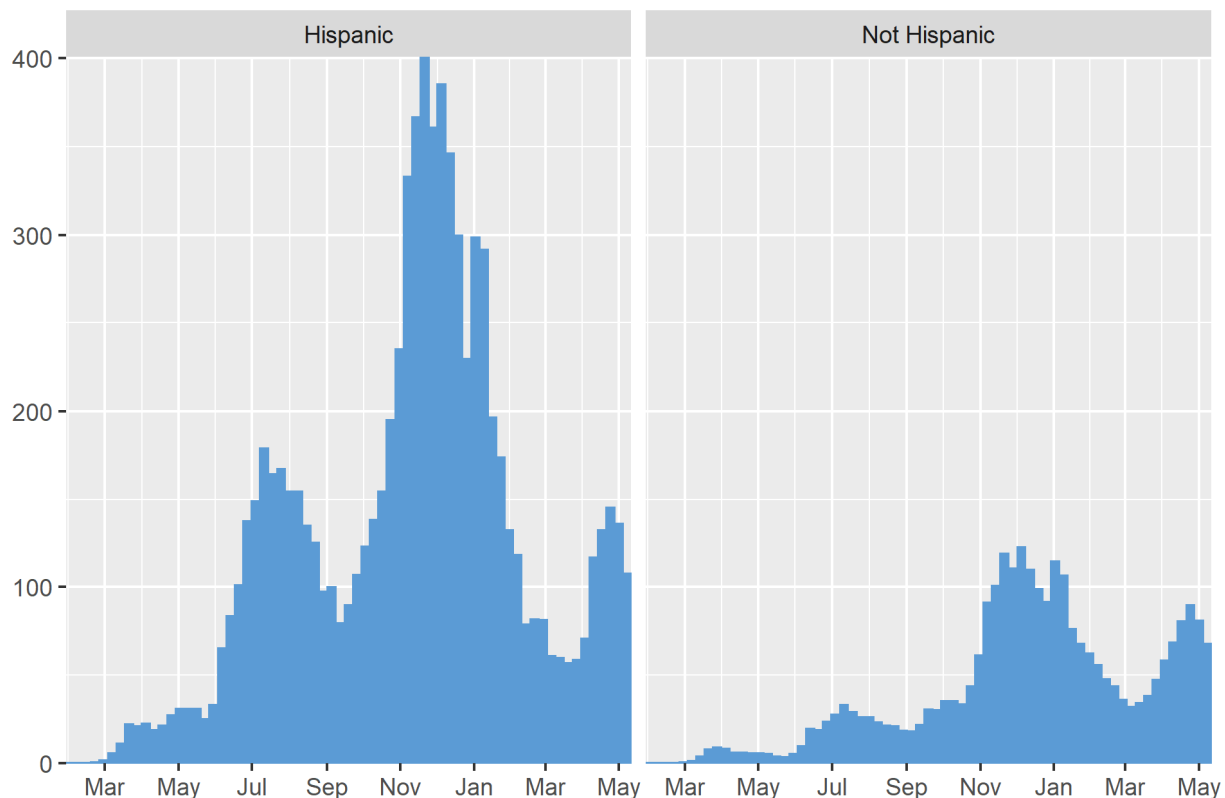
Data are provisional and subject to change.

COVID-19 Weekly Report

Oregon's Weekly Surveillance Summary



Figure 21. All COVID-19 cases by ethnicity (case rates per 100,000) and week of onset



Age-adjustment

Tables 5 and 6 show the ratio of age-adjusted rates of COVID-19 for cases, hospitalizations, and deaths by race and ethnicity. Each table compares the rates of cases, hospitalizations, and deaths between each group and a reference group and accounts for differences in population distributions in each group.

Table 5. Ratio of age-adjusted rates for cases, hospitalizations, and deaths by race

Age-adjusted rate ratios of cases, hospitalizations, and deaths, compared to white persons

COVID-19 Weekly Report

Oregon's Weekly Surveillance Summary



Race	Cases	Hospitalizations	Deaths
> 1 race	0.7	1.3	2.1
American Indian/Alaska Native	2.4	3.6	2.9
Asian	1.1	1.4	1.1
Black	2.2	3.5	2.8
Pacific Islander	3.5	9.4	8.4
White	1.0	1.0	1.0

1. During the case investigation, people are asked to self-report their race, ethnicity, tribal affiliation, country of origin, or ancestry.
2. U.S. Census Bureau; American Community Survey, 2019 American Community Survey 5-Year Estimates.
3. Persons for which race information was not available were not included in these estimates. The number of persons with race data unavailable can be found in Table 3.

Table 6. Ratio of age-adjusted rates for cases, hospitalizations, and deaths by ethnicity

Age-adjusted rate ratios of cases, hospitalizations, and deaths, compared to non-Hispanic

Ethnicity	Cases	Hospitalizations	Deaths
Hispanic	2.8	3.7	2.9
Non-Hispanic	1.0	1.0	1.0

1. During the case investigation, people are asked to self-report their race, ethnicity, tribal affiliation, country of origin, or ancestry.
2. U.S. Census Bureau; American Community Survey, 2019 American Community Survey 5-Year Estimates.
3. Persons for which ethnicity information was not available were not included in these estimates. The number of persons with ethnicity data unavailable can be found in Table 4.

COVID-19 Weekly Report

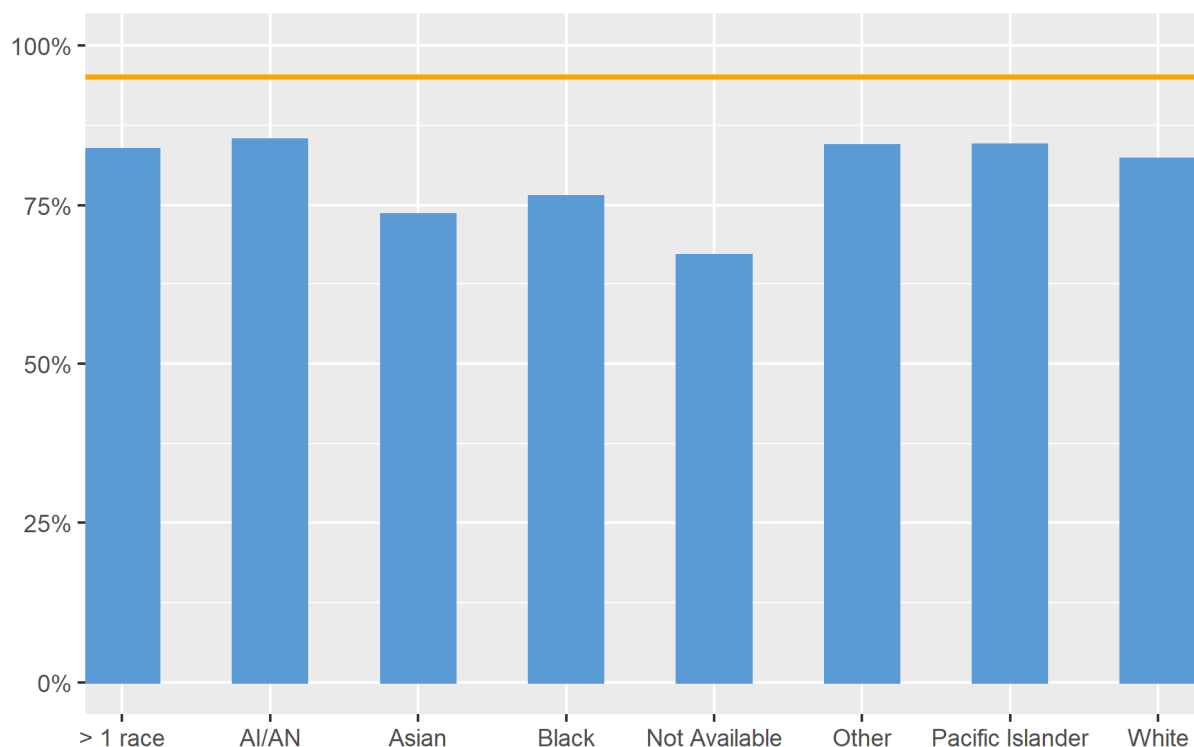
Oregon's Weekly Surveillance Summary



Follow-up

Figure 22 shows the percentage of cases that were called within 24 hours of being reported to public health by race. Figure 23 shows the percentage of cases that were called within 24 hours of being reported to public health by ethnicity. Figure 24 shows the percentage of cases that were interviewed, by race. Figure 25 shows the percentage of cases that were interviewed, by ethnicity. Race and ethnicity data are collected when cases are interviewed. Race and ethnicity data for cases that were not interviewed are abstracted from laboratory reports and medical records if it is available. The orange line in figures 22 and 23 represents the state metric for timely follow up for all cases: 95%.

Figure 22. Follow up attempted within 24 hours, % by race

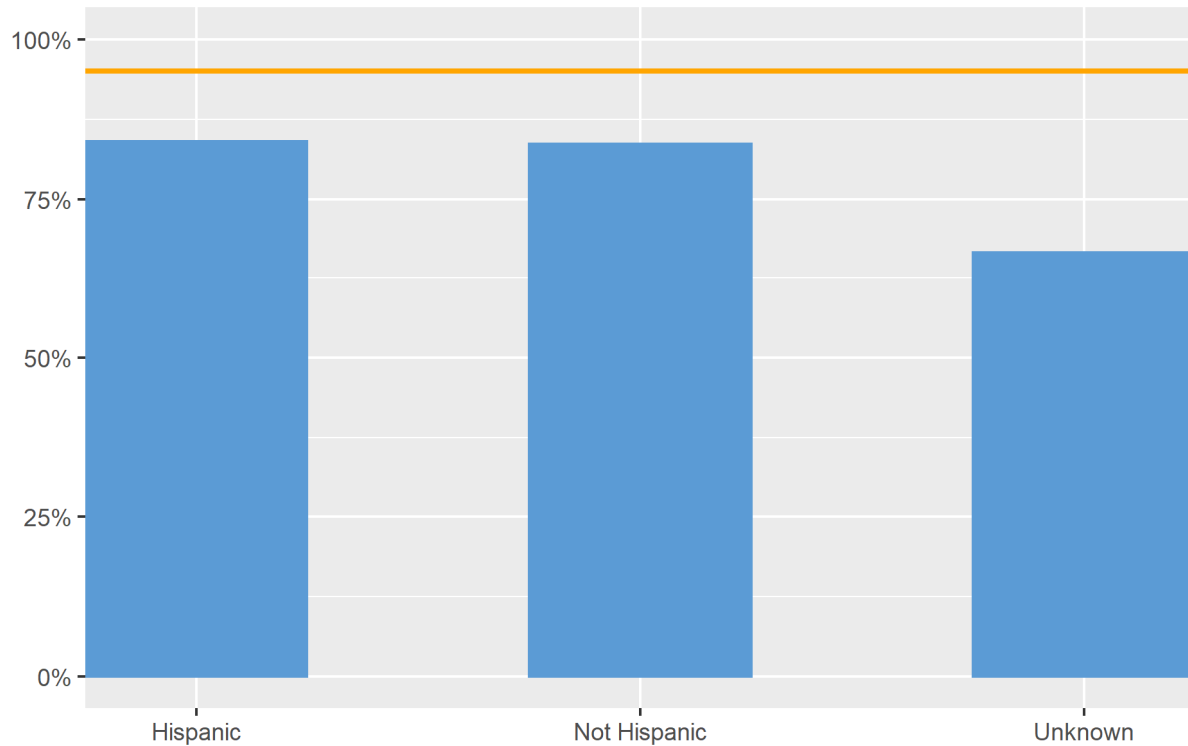


COVID-19 Weekly Report

Oregon's Weekly Surveillance Summary



Figure 23. Follow up attempted within 24 hours, % by ethnicity



COVID-19 Weekly Report

Oregon's Weekly Surveillance Summary



Figure 24. Cases interviewed, by race

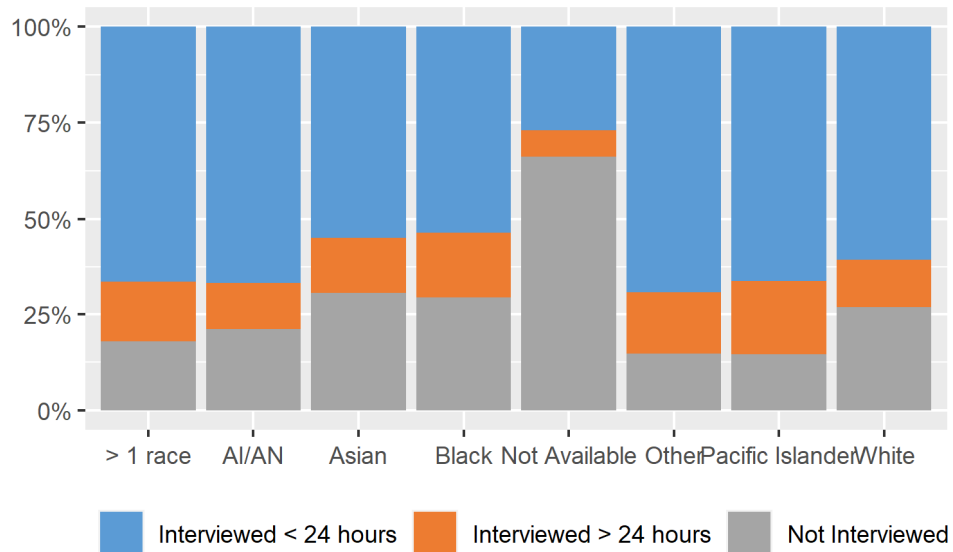
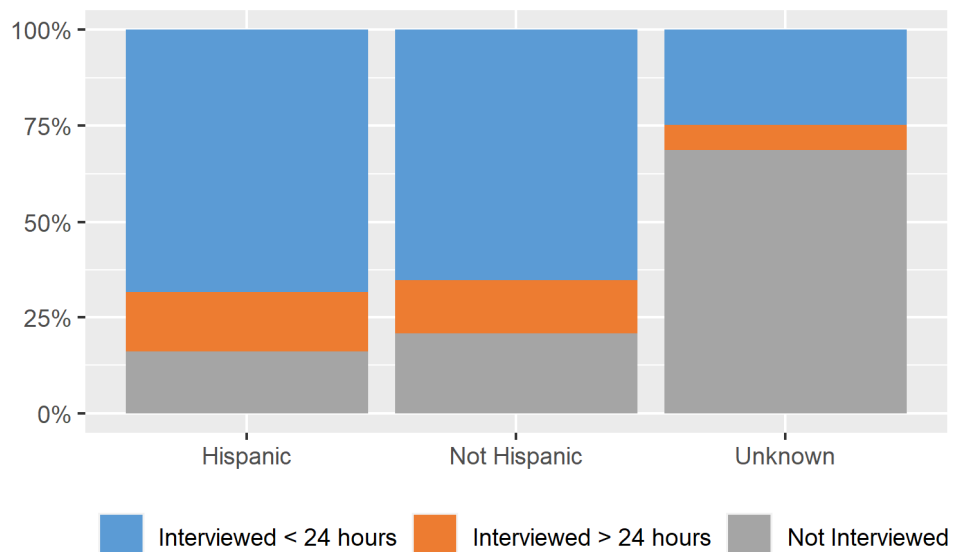


Figure 25. Cases interviewed, by ethnicity



COVID-19 Weekly Report

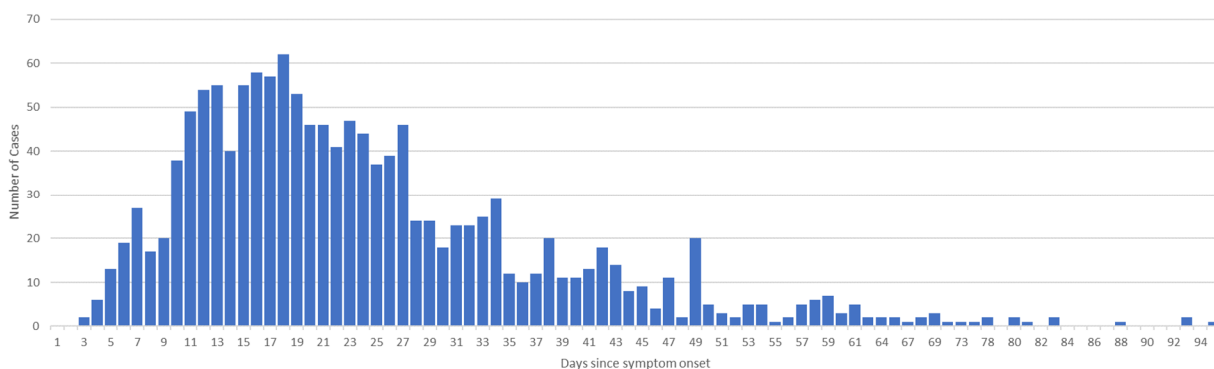
Oregon's Weekly Surveillance Summary



Recovery

OHA staff periodically call people with reported COVID-19 who experienced fever, cough, shortness of breath or diarrhea and were initially interviewed before May 1, when OHA changed its definition of recovery, to inquire about resolution of symptoms. This group includes 1,884 people who were all diagnosed before mid-April and have not succumbed to their illness. Among these, 1,682 (88.8%) are considered to have recovered, and a recovery date is available for 1,387 people; their time to recovery is depicted in Figure 26. Of these 1,884 people, 16 (0.8%), have not yet recovered; and recovery status is not available for 186 (9.8%). People are assumed to have recovered three days after resolution of all symptoms. The median time to recovery among non-hospitalized symptomatic cases is 20 days (interquartile range: 15–29 days); among symptomatic cases who were hospitalized it is 26 days (interquartile range: 18–37 days).

Figure 26. Time to recovery among symptomatic people with COVID-19



Notes about recovery data:

- Recovery definition: three days after reported resolution of diarrhea, cough, shortness of breath and fever.
- Inclusion criteria: cases who were interviewed about their date of recovery before a change in recovery definition on May 1
- Data for 1,387 cases are included
- This was last updated on 9/16; Data will be updated again as new information is available.

COVID-19 Weekly Report

Oregon's Weekly Surveillance Summary



People with Intellectual and Developmental Disabilities

As of March 8, 2021 OHA is aware of 744 people with intellectual or developmental disabilities who have had COVID-19 to date. This includes individuals who live in congregate settings and in family or individual homes. To date, there are 21 deaths associated with people with intellectual or developmental disabilities. This number is from conducting a match between the ODHS Office of Developmental Disabilities Services client list and the Oregon COVID-19 case database. OHA will update this number on a quarterly basis.

Additional information about the ODDS program and COVID-19 can be found here:

<https://www.oregon.gov/dhs/SENIORS-DISABILITIES/DD/ODDS%20Resource%20Library/ODDS-Residential-COVID-19-Report.pdf>

ODDS data is based on self-reports from providers and case management entities and therefore may differ from testing data received from the Oregon Health Authority.

Weekly COVID-19 Hospitalizations (HOSCAP)

OHA is publishing data on the number of COVID-19 hospitalizations by hospital in the prior week; data are from HOSCAP. Table 7 lists all hospitals which, at some time during the week reported, had 10 or more suspected/confirmed COVID-19 patients. The left column shows the highest number of suspected and confirmed COVID-19 hospitalized patients for each hospital between 05/10/2021 and 05/16/2021. The right column shows the highest number of confirmed COVID-19 patients hospitalized during the same time period.

Table 7. Hospitals reporting 10 or more COVID-19 patients.

Hospital	Maximum Patients (both suspected and confirmed)	Maximum Patients (confirmed only)
St. Charles Bend	51	43
Salem Health Hospital	42	42
Providence Portland Medical Center	37	37
Providence St. Vincent Medical Center	32	30
OHSU Hospital	24	15

COVID-19 Weekly Report

Oregon's Weekly Surveillance Summary



Hospital	Maximum Patients (both suspected and confirmed)	Maximum Patients (confirmed only)
PeaceHealth Sacred Heart MC at Riverbend	19	19
Sky Lakes Medical Center	19	19
Legacy Emanuel Medical Center	19	16
Legacy Mount Hood Medical Center	18	15
Adventist Health Portland	17	17
Asante Rogue Regional Medical Center	15	15
Good Samaritan Regional Medical Center	14	14
Kaiser Permanente Sunnyside Medical Center	13	13
Legacy Good Samaritan Medical Center	12	12
McKenzie-Willamette Medical Center	11	11

The hospitals listed in Table 8 reported 1–9 suspected or confirmed COVID-19 patients 05/10/2021 through 05/16/2021. Hospitals not listed in either table did not report any suspected or confirmed patients during the week.

Table 8. Hospitals reporting 1–9 COVID-19 patients.

Hospital
Asante Ashland Community Hospital
Asante Three Rivers Medical Center
Bay Area Hospital
Columbia Memorial Hospital
Good Shepherd Health Care System
Grande Ronde Hospital
Harney District Hospital

COVID-19 Weekly Report

Oregon's Weekly Surveillance Summary



Hospital
Hillsboro Medical Center
Kaiser Permanente Westside Medical Center
Legacy Meridian Park Hospital
Legacy Silverton Medical Center
Mercy Medical Center
Mid-Columbia Medical Center
OHSU Doernbecher Children's Hospital
Providence Hood River Memorial Hospital
Providence Medford Medical Center
Providence Milwaukie Hospital
Providence Newberg Medical Center
Providence Willamette Falls Medical Center
Randall Children's Hospital at Legacy Emanuel
Samaritan Albany General Hospital
Samaritan Lebanon Community Hospital
Samaritan North Lincoln Hospital
Santiam Hospital
St. Anthony Hospital
St. Charles Madras
St. Charles Redmond
VA Portland Health Care System
Willamette Valley Medical Center

COVID-19 Weekly Report

Oregon's Weekly Surveillance Summary



ZIP code

OHA is publishing data on cases at the ZIP code level, available online at:

<https://public.tableau.com/profile/oregon.health.authority.covid.19#!/vizhome/OregonCOVID-19CasesbyZIPCode/OregonsCOVID-19CasesbyZipCode?publish=yes>

Summary table of all zip codes available here:

<https://public.tableau.com/profile/oregon.health.authority.covid.19#!/vizhome/OregonCOVID-19CasesbyZIPCode-SummaryTable/CasesbyZIPCodeSummaryTable?publish=yes>

Document accessibility: For individuals with disabilities or individuals who speak a language other than English, OHA can provide information in alternate formats such as translations, large print, or braille. Contact the Health Information Center at 1-971-673-2411, 711 TTY or COVID19.LanguageAccess@dhsosha.state.or.us.