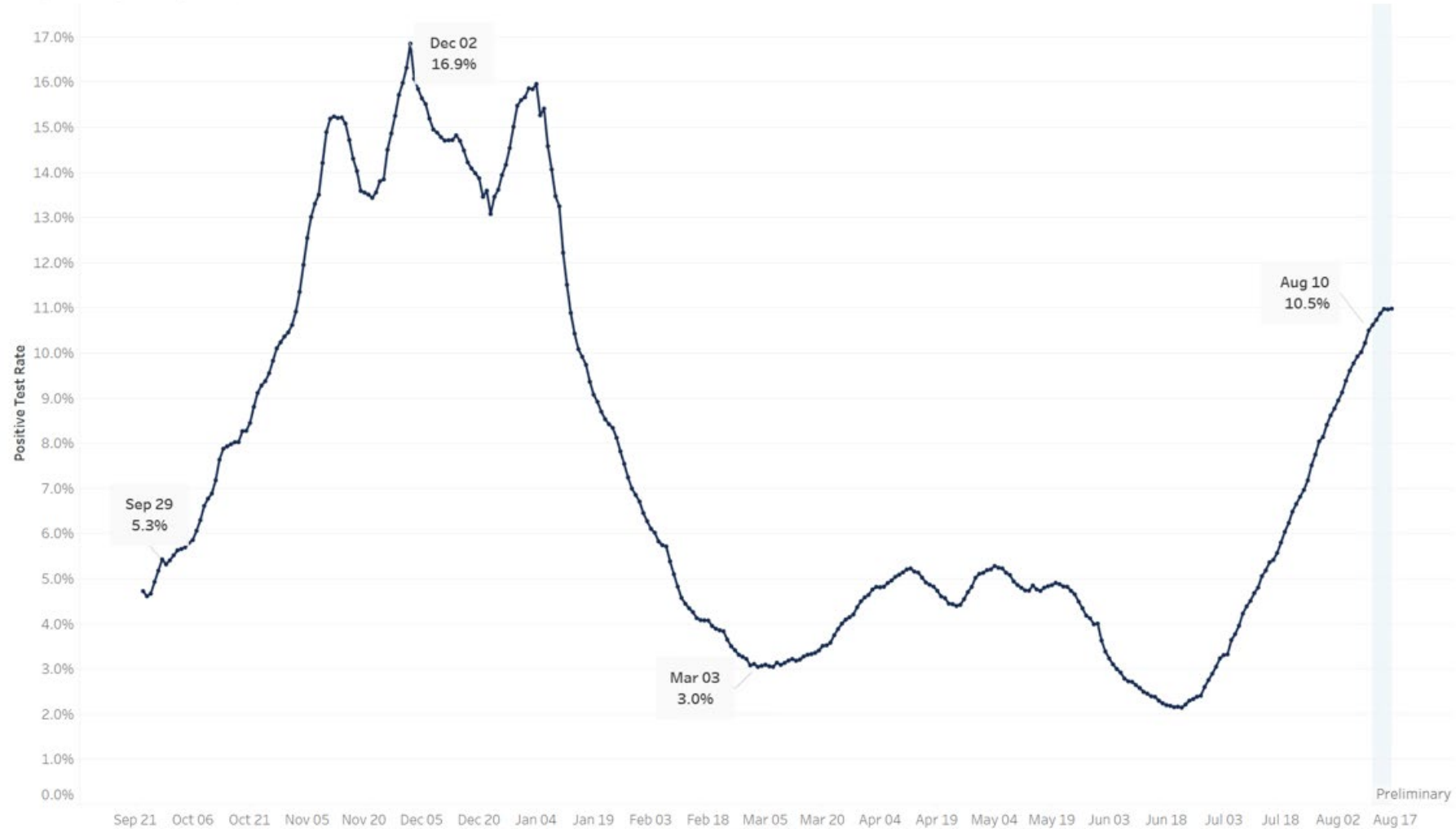


Positivity Rate

Statewide Daily Positive Test Rate, All Tests
7-Day Moving Average, September 23, 2020 to Present



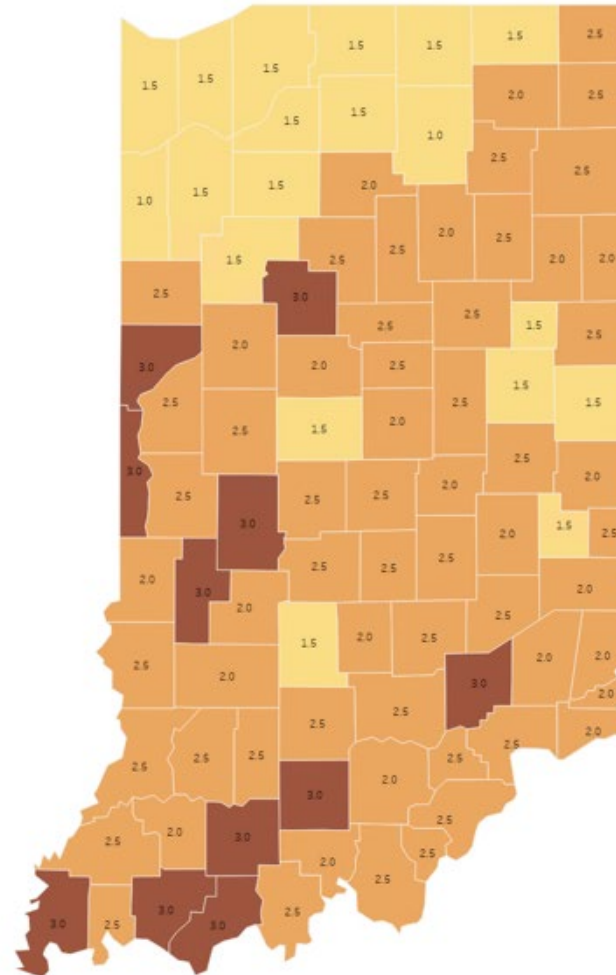
County Metrics

Two Score Color
Yellow (1 and 1.5)
Orange (2 and 2.5)
Red (3)

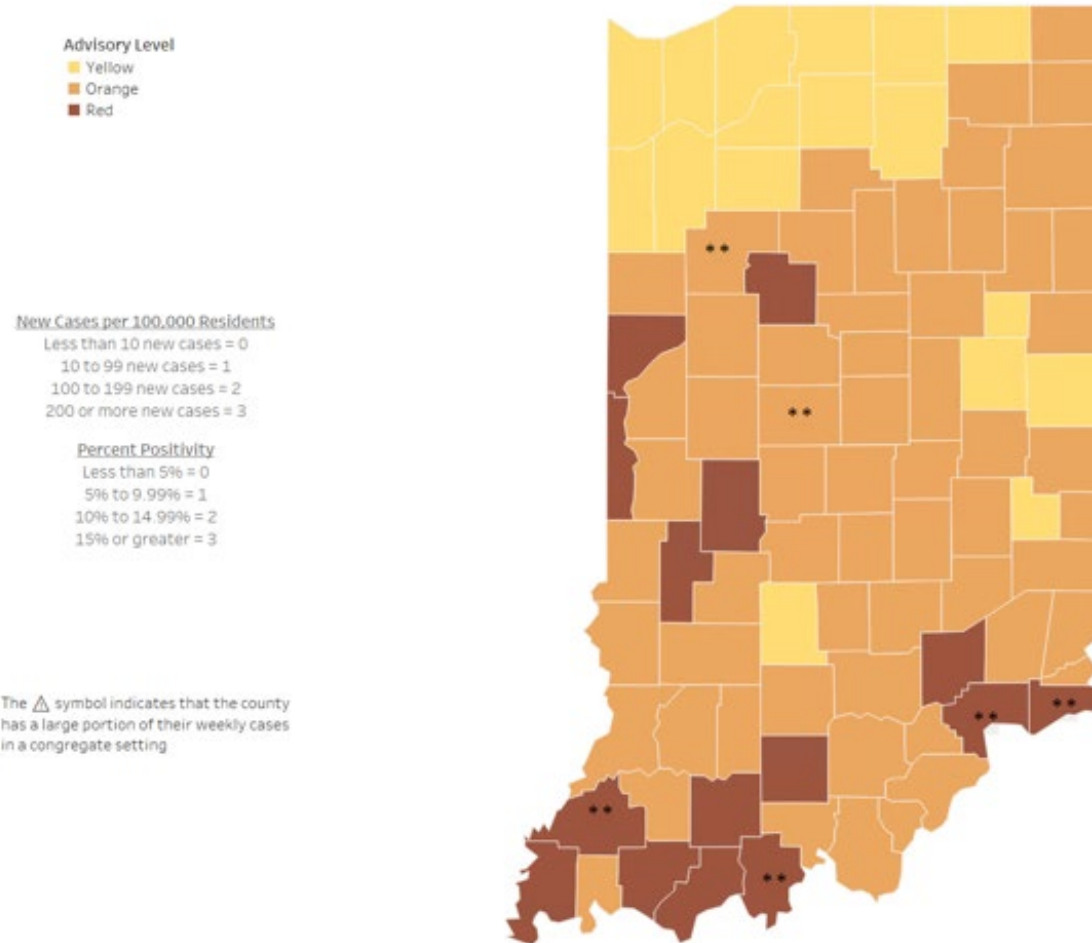
New Cases per 100,000 Residents
Less than 10 new cases = 0
10 to 99 new cases = 1
100 to 199 new cases = 2
200 or more new cases = 3

Percent Positivity
Less than 5% = 0
5% to 9.99% = 1
10% to 14.99% = 2
15% or greater = 3

The Δ symbol indicates that the county has a large portion of their weekly cases in a congregate setting



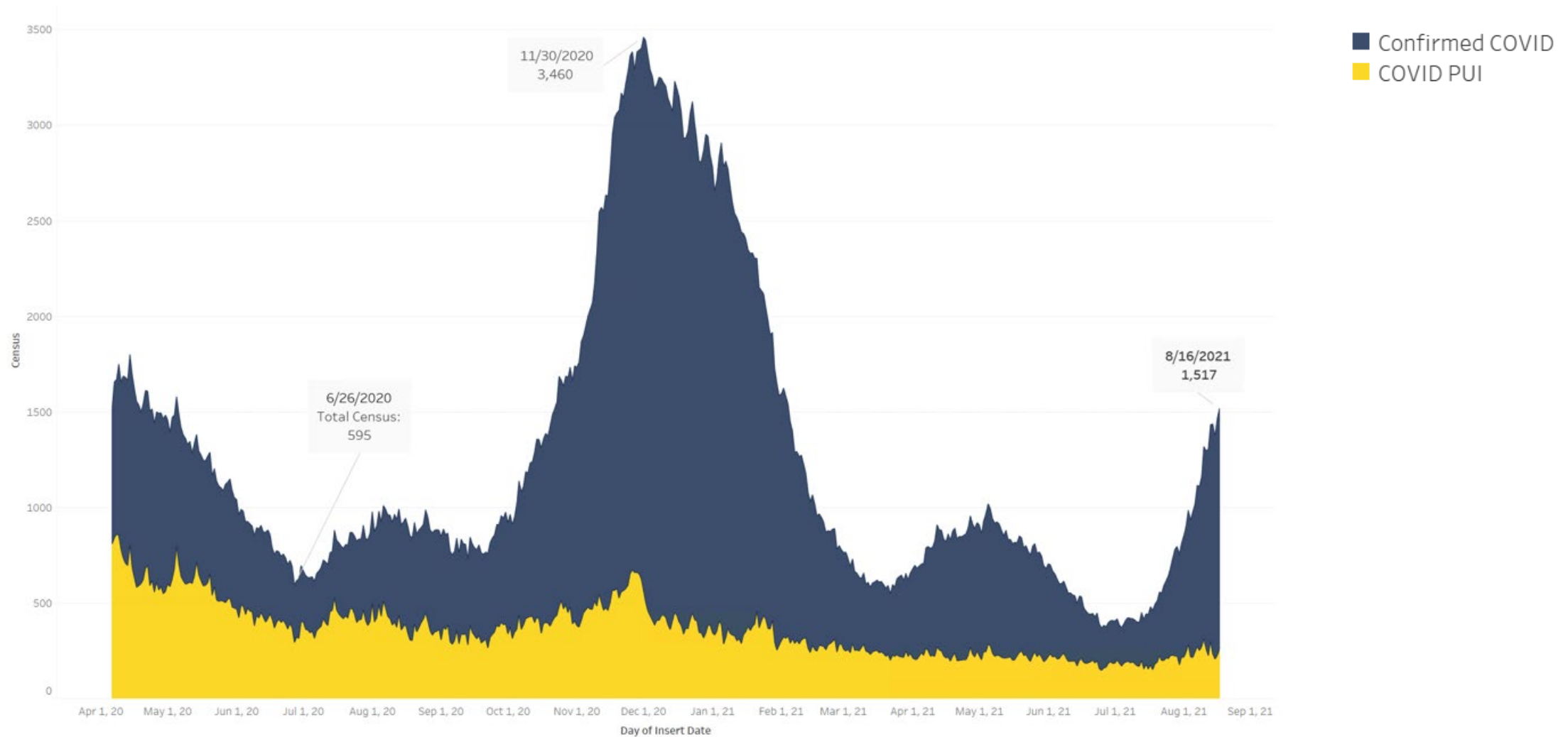
Advisory Level



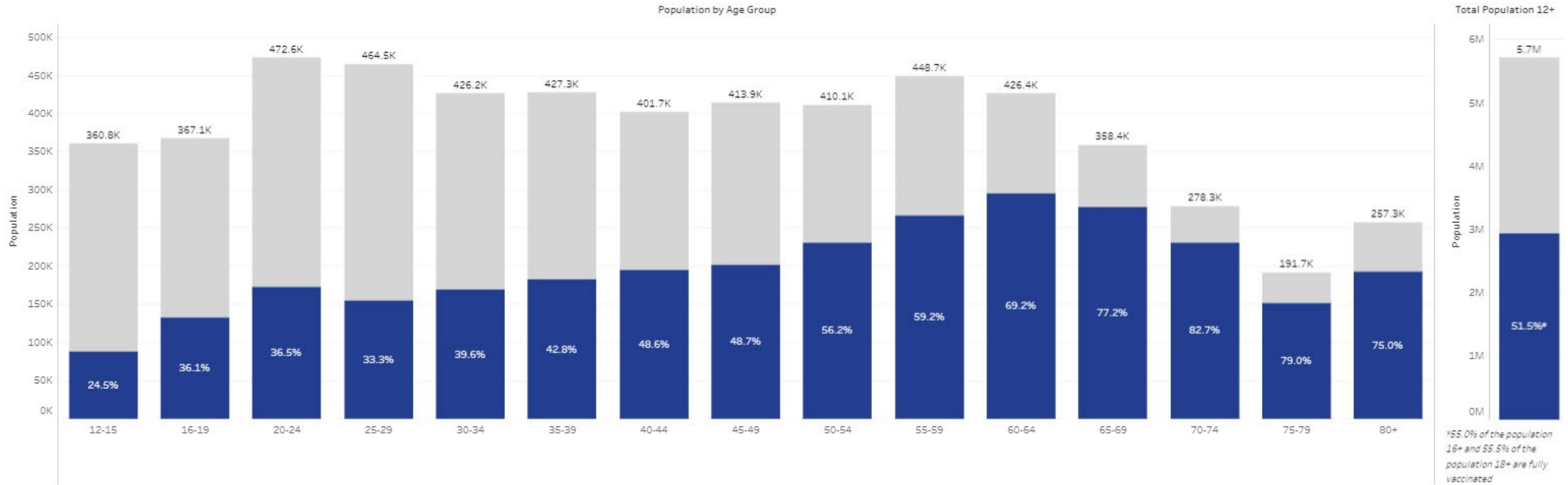
Variant Cases in Indiana

Variant	% of Samples (in current month)	Change in % of Samples (from previous month)
Delta / B.1.617.2	82.6%	7%
Not Variant of Concern ⓘ	14.8%	6.9%
Gamma / P.1	1.4%	-2%
Alpha / B.1.1.7	1.1%	-12%
Beta / B.1.351	0%	0%

Statewide COVID-19 Hospital Census



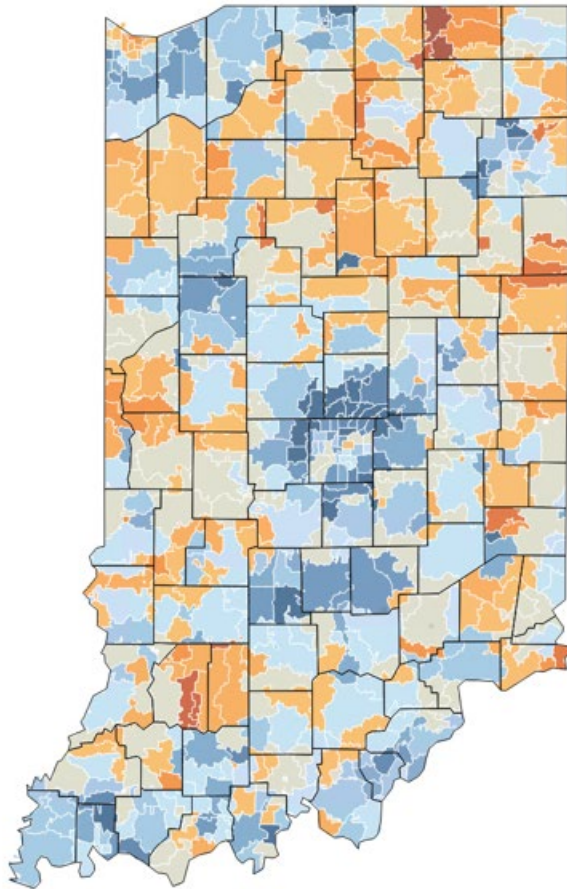
Fully Vaccinated by Age Group



Vaccine Uptake by ZIP Code

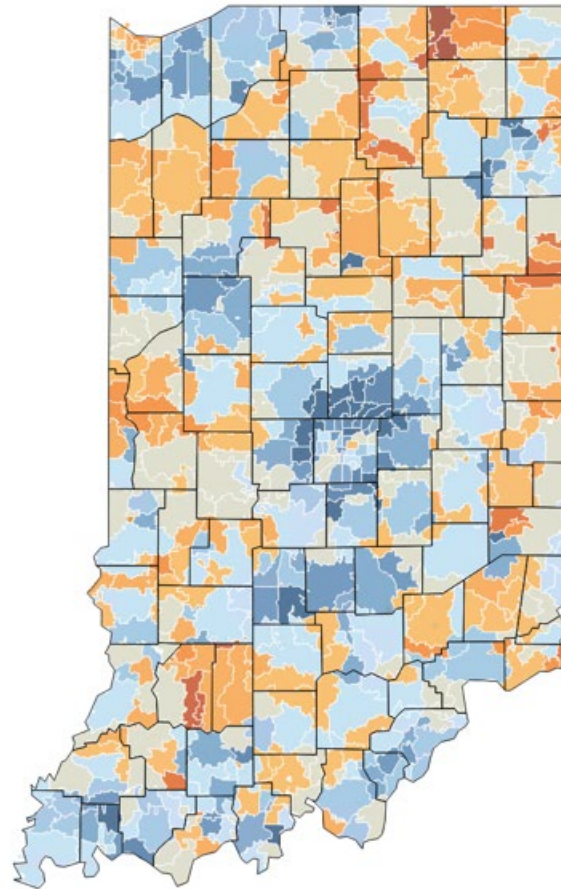
All Time

Includes vaccinations from all time

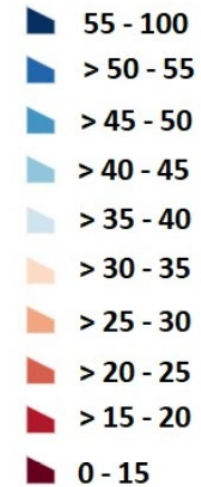


Previous Week

Includes vaccinations through 8/3/2021



Percent of Population,
16 and Over, Fully
Vaccinated by ZIP Code



Multisystem inflammatory syndrome in children

Total Confirmed Cases

104

Age Range

0-21 (Mean 9.7)

Gender Distribution

36.5% Female / 63.5% Male

		<u>Race</u>	Ethnicity
		Race	% of Cases
		White	52.0 %
		Black or African American	29.0 %
		Other Race ⓘ	21.0 %
		Asian	2.0 %