



Community Planning & Permitting

2045 13th Street, Boulder, CO 80302 303-441-3930 www.bouldercounty.org

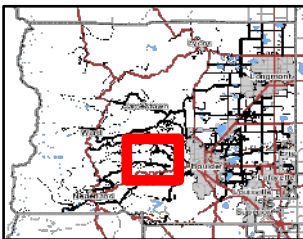
Attachment A1 Sugarloaf Firearm Discharge Prohibition Area Resolution 1980-52

- Firearm Control Area
- State Hwy
- Major
- Minor County Rd
- County Jeep Rd
- US Forest Roads
- County Open Space
- County Conservation Easement
- County Miscellaneous Easement
- USFS Land
- BLM Land
- City Of Boulder Open Space

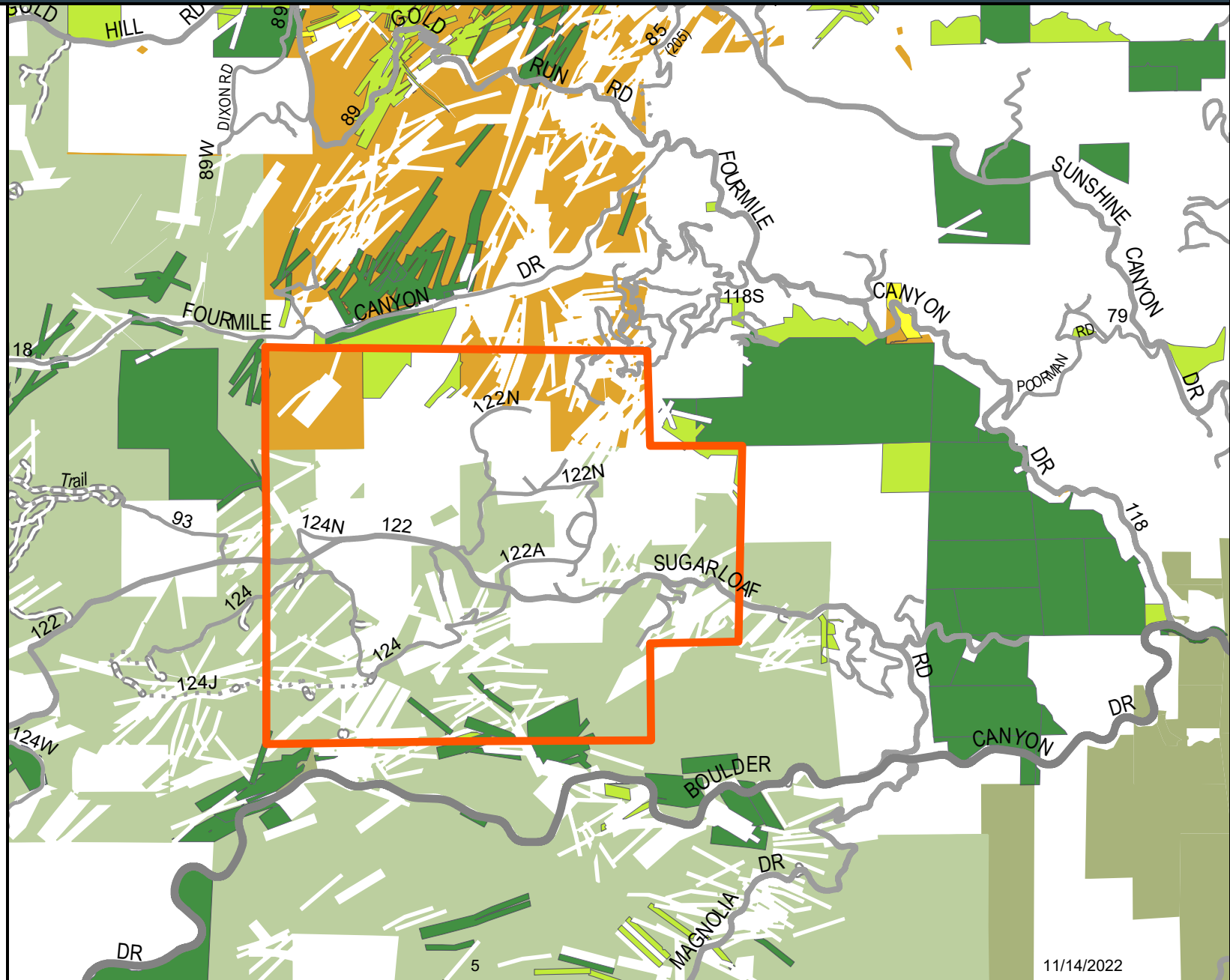
0 0.25 0.5 Miles



Area of Detail Date: 11/10/2022



The user agrees to all Terms of Use set forth by Boulder County. For Terms of Use, please visit: www.bouldercounty.org/dhaines















11/14/2022

County Commissioners at a public hearing scheduled for Nov. 15 at 1 p.m.

Attachment B1

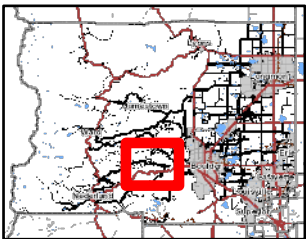
Sugarloaf Firearm Discharge Prohibition Area

-  Discharge Prohibition Area
-  State Hwy
-  Major
-  Minor County Rd
-  County Jeep Rd
-  US Forest Roads
-  USFS Land
-  BLM Land
-  County Open Space
-  County Conservation Easement
-  County Miscellaneous Easement
-  City Of Boulder Open Space

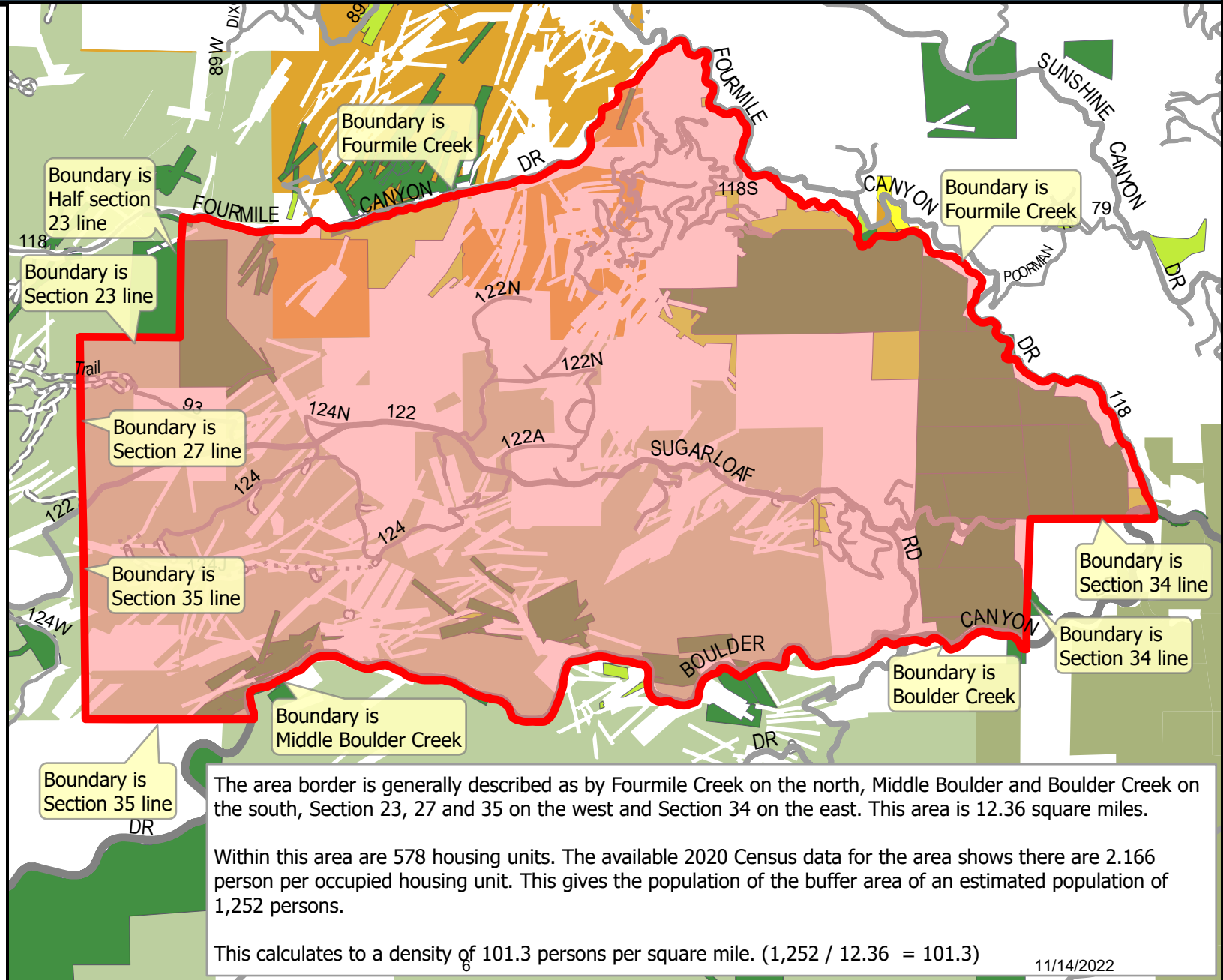
0 0.25 0.5 Miles



Area of Detail



Printed: 11/10/2022





Attachment C1 Raymond-Riverside Firearm Discharge Prohibition Area

- Discharge Prohibition Area
- State Hwy
- Minor County Rd
- - County Jeep Rd
- = US Forest Roads
- USFS Land

The area border is generally described as SH 7 on the north, 1/4 mile from FR 523.1 on the east, 1/4 mile from FR 252.1 and public lands border on the south, and SH 72 and 1/4 mile from Bunce School Rd on the west. This area is 3.57 square miles.

Within the area are 206 housing units. The available 2020 Census data for the area shows there are 1.932 person per occupied housing unit. This gives the population of the buffer area of an estimated population of 398 persons.

This calculates to a density of 111.5 persons per square mile. ($398 / 3.57 = 111.5$)

Boundary is
1/4 Mile from
Bunce School Rd

Boundary is
SH 7

Boundary is
SH 7

Boundary is
1/4 Mile from
Forest Road 523.1

Boundary is
1/4 Mile from
Forest Road 217.1

Boundary is
SH 72

Boundary is
public lands border

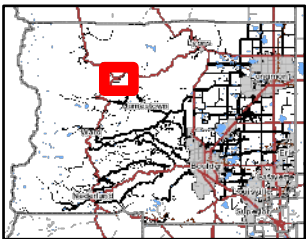
Boundary is
1/4 Mile from
Forest Road 252.1

Boundary is
1/4 Mile from
Forest Road 523.1

0 0.25 Miles



Area of Detail



Printed: 11/14/2022

11/14/2022



**PROPOSED map only. For consideration by the Board of County Commissioners at a public hearing scheduled for Nov. 15 at 1 p.m.
Details: www.boco.org/Nov15PublicHearing**

Attachment D1

Magnolia Firearm Discharge Prohibition Area

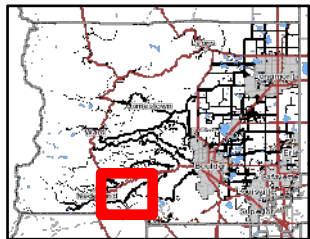
Discharge Prohibition Area

- State Hwy
- Major
- Minor County Rd
- County Jeep Rd
- Other
- Gross Reservoir IGA Prohibiting Discharge
- US Forest Roads
- USFS Land
- BLM Land
- County Open Space
- County Conservation Easement
- County
- Miscellaneous Easement

0 0.25 0.5 Miles



Area of Detail

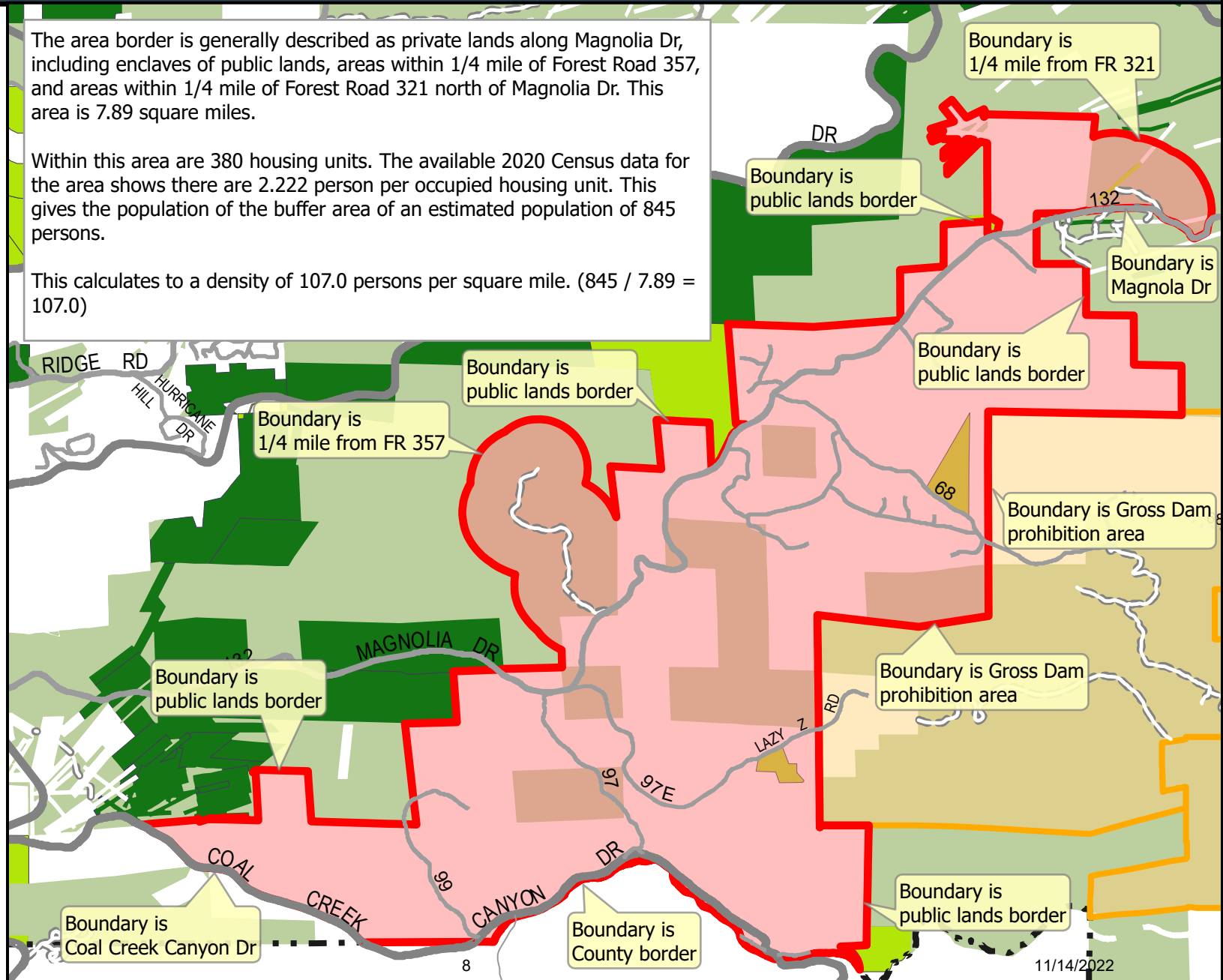


Printed: 11/10/2022

The area border is generally described as private lands along Magnolia Dr, including enclaves of public lands, areas within 1/4 mile of Forest Road 357, and areas within 1/4 mile of Forest Road 321 north of Magnolia Dr. This area is 7.89 square miles.

Within this area are 380 housing units. The available 2020 Census data for the area shows there are 2.222 person per occupied housing unit. This gives the population of the buffer area of an estimated population of 845 persons.

This calculates to a density of 107.0 persons per square mile. ($845 / 7.89 = 107.0$)



11/14/2022