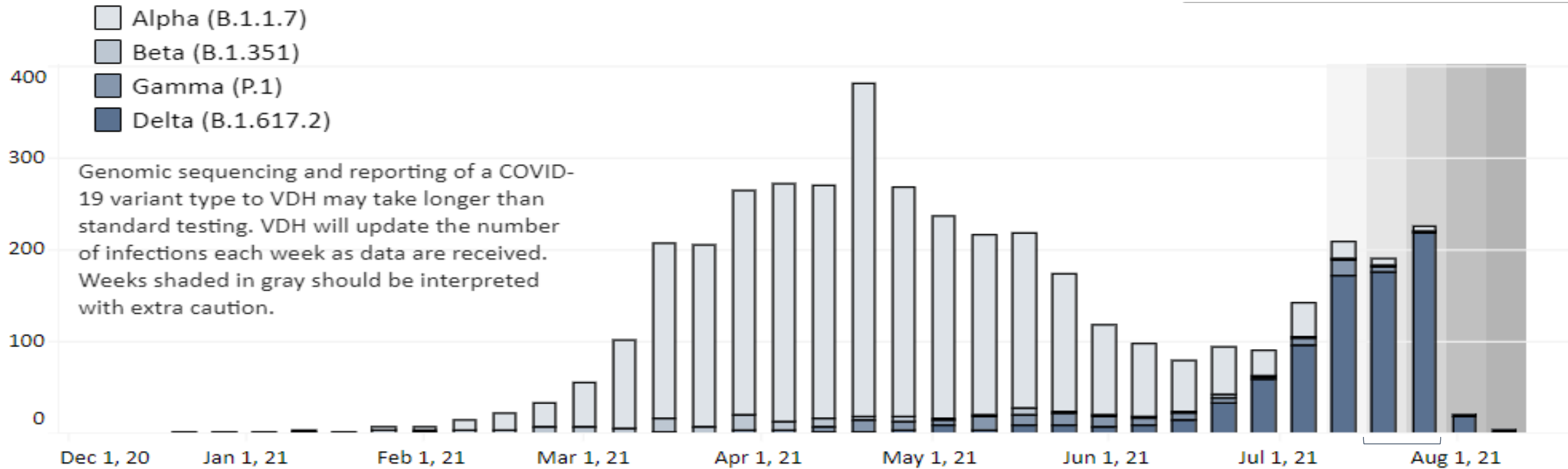


# COVID-19 Update

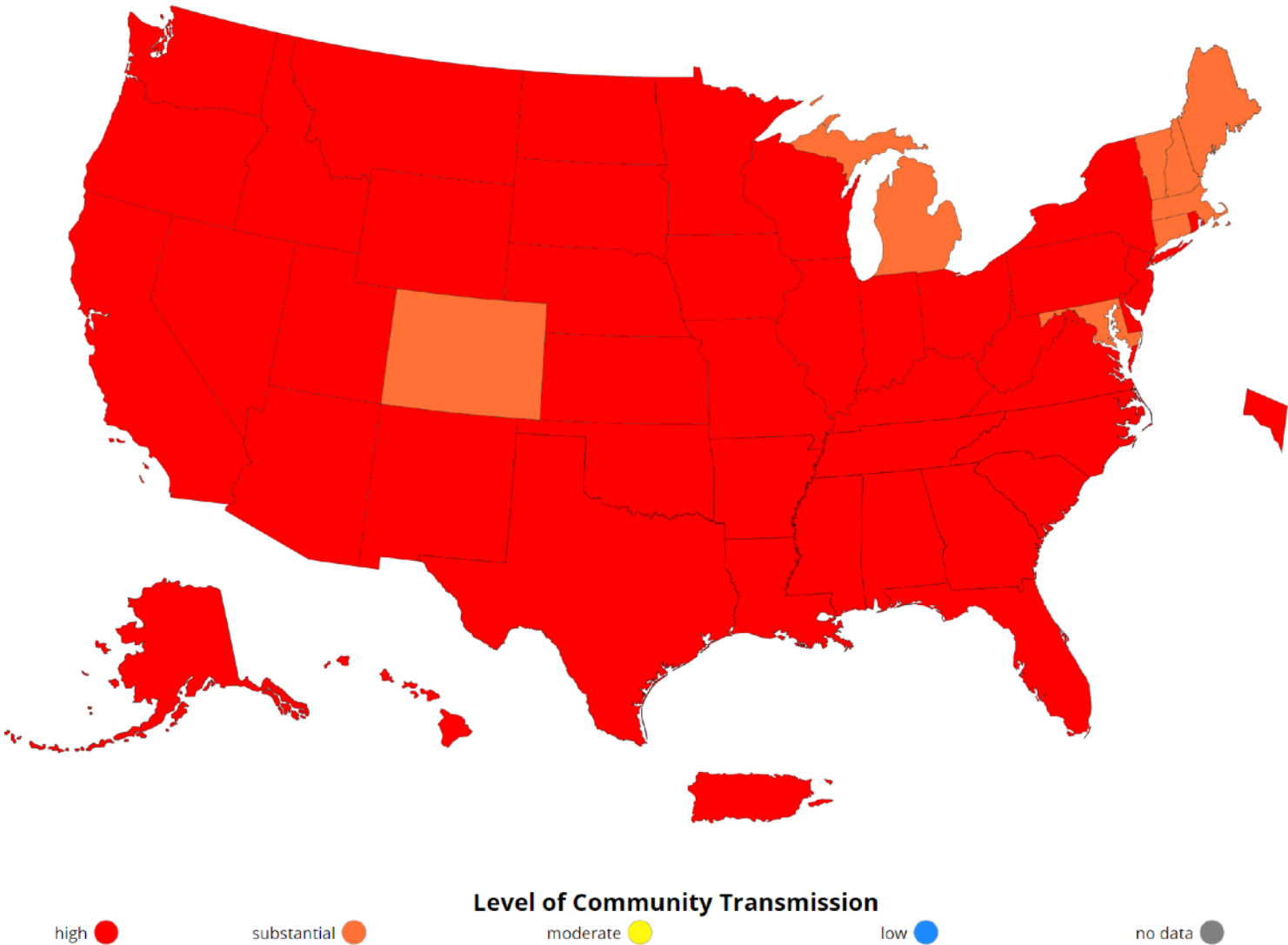
Presentation for Virginia's School Division Superintendents  
August 17, 2021

# The Delta Variant: Fastest and Fittest



	Week Ending 7/17/2021	Week Ending 7/24/2021	Percent Change
Alpha	3.7%	2.7%	-27.0%
Beta	0%	0%	0%
Gamma	4.2%	0%	-100%
Delta	92.1%	97.3%	+5.6%

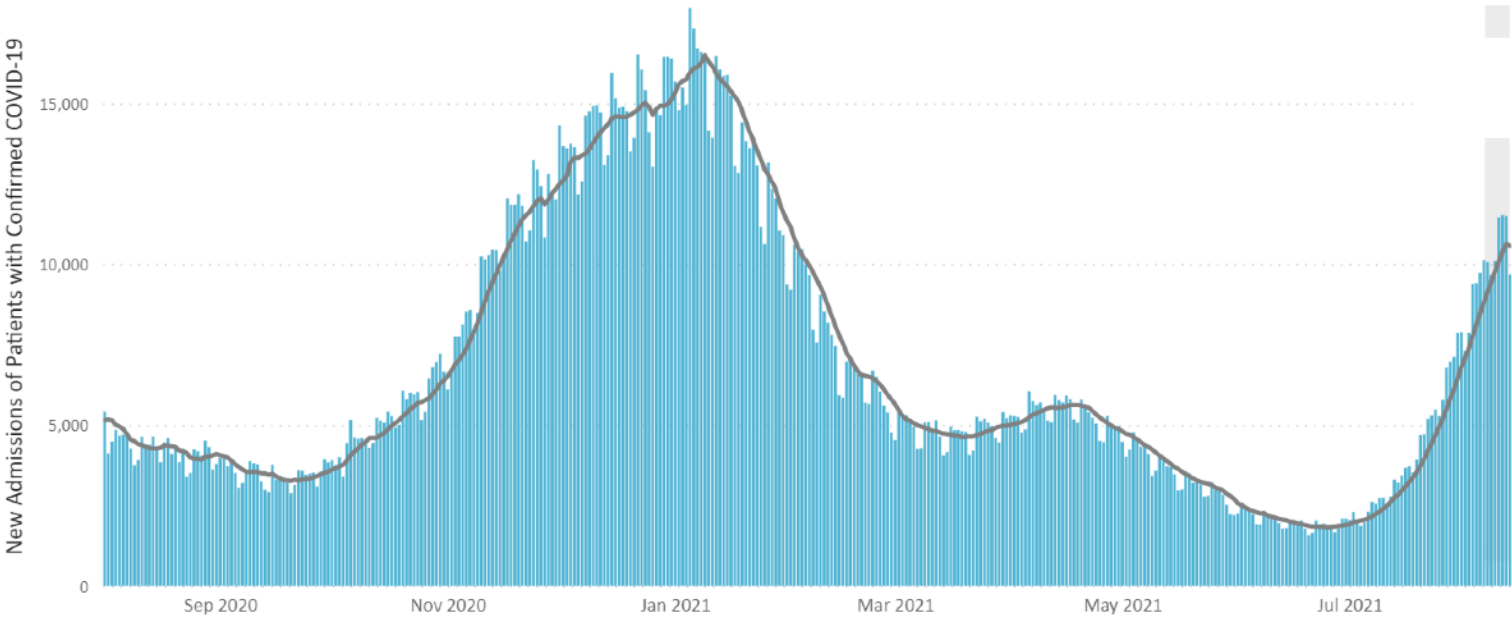
Level of Community Transmission of COVID-19, by State/Territory



Weekly Case Rate

	Cases in the Last 7 Days Per 100k Population
Virginia	124.1
U.S.	228.7
Florida	704.5
Louisiana	642.0
Mississippi	540.5

Indicator	Total new cases per 100k persons in the past 7 days
Low Transmission	0-9.99
Moderate Transmission	10-49.99
Substantial Transmission	50-99.99
High Transmission	≥ 100



**New Admissions of Patients with Confirmed COVID-19 per 100k Population**

United States | All Ages

**2,539,857**

Total Admissions

Aug 01, 2020 - Aug 13, 2021

**10,569**

Current 7-Day Average

Aug 07, 2021 - Aug 13, 2021

**8,816**

Prior 7-Day Average

Jul 31, 2021 - Aug 06, 2021

Total Number of People Hospitalized

**66,428**

Current 7-Day Average

Aug 07, 2021 - Aug 13, 2021

**52,507**

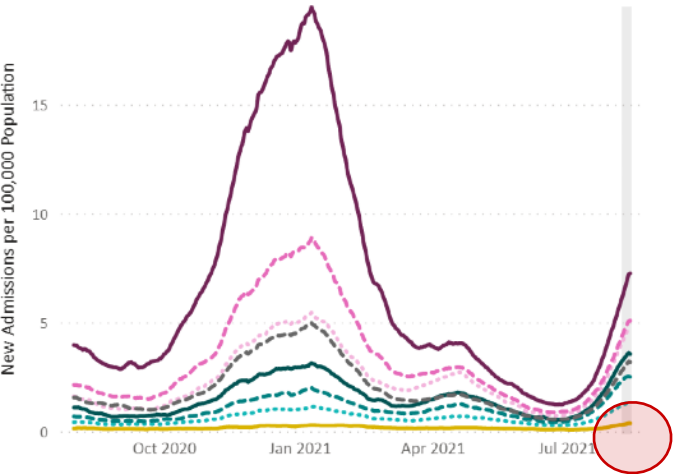
Prior 7-Day Average

Jul 31, 2021 - Aug 06, 2021

# COVID-19 Pediatric Hospitalizations in the United States

## New Admissions of Patients Ages 0-17 Years Old with Confirmed COVID-19 per 100k Population

United States | All Age Groups



United States | 0 - 17 Years



United States | 0 - 17 Years

47,749

Total Admissions  
Aug 01, 2020 - Aug 13, 2021

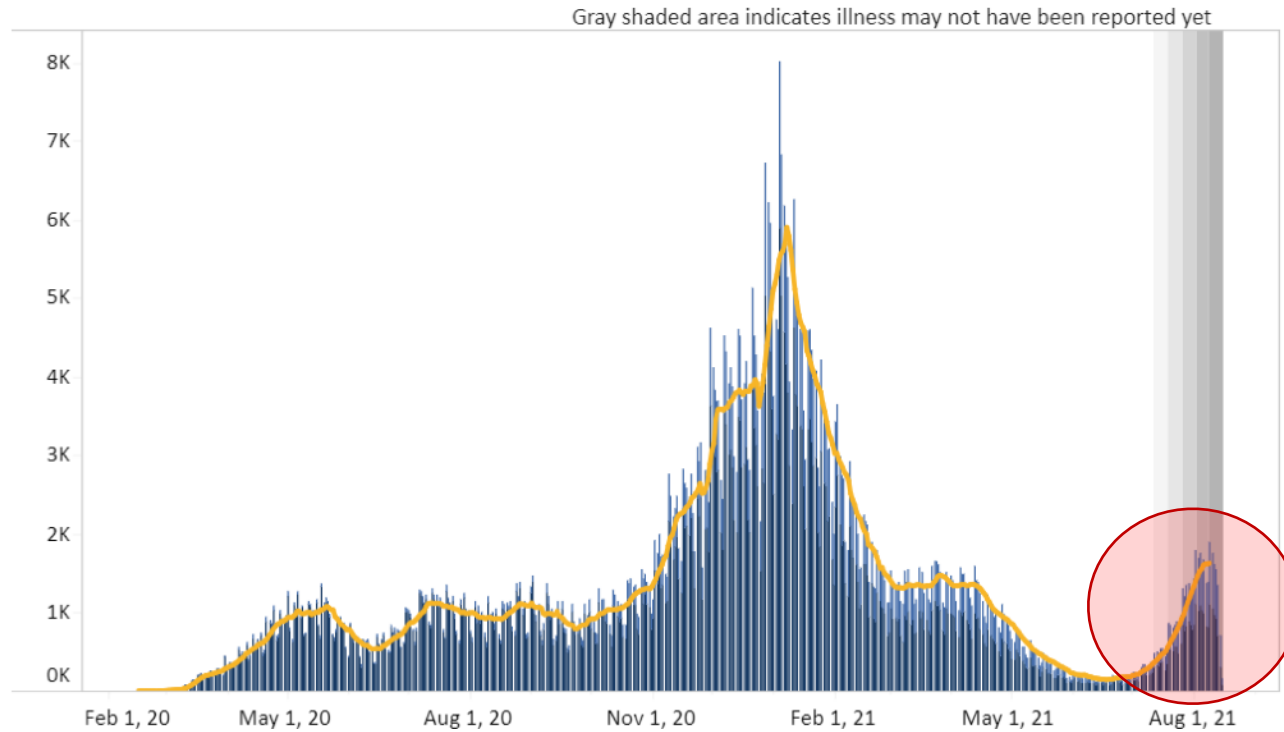
272

Current 7-Day Average  
Aug 07, 2021 - Aug 13, 2021

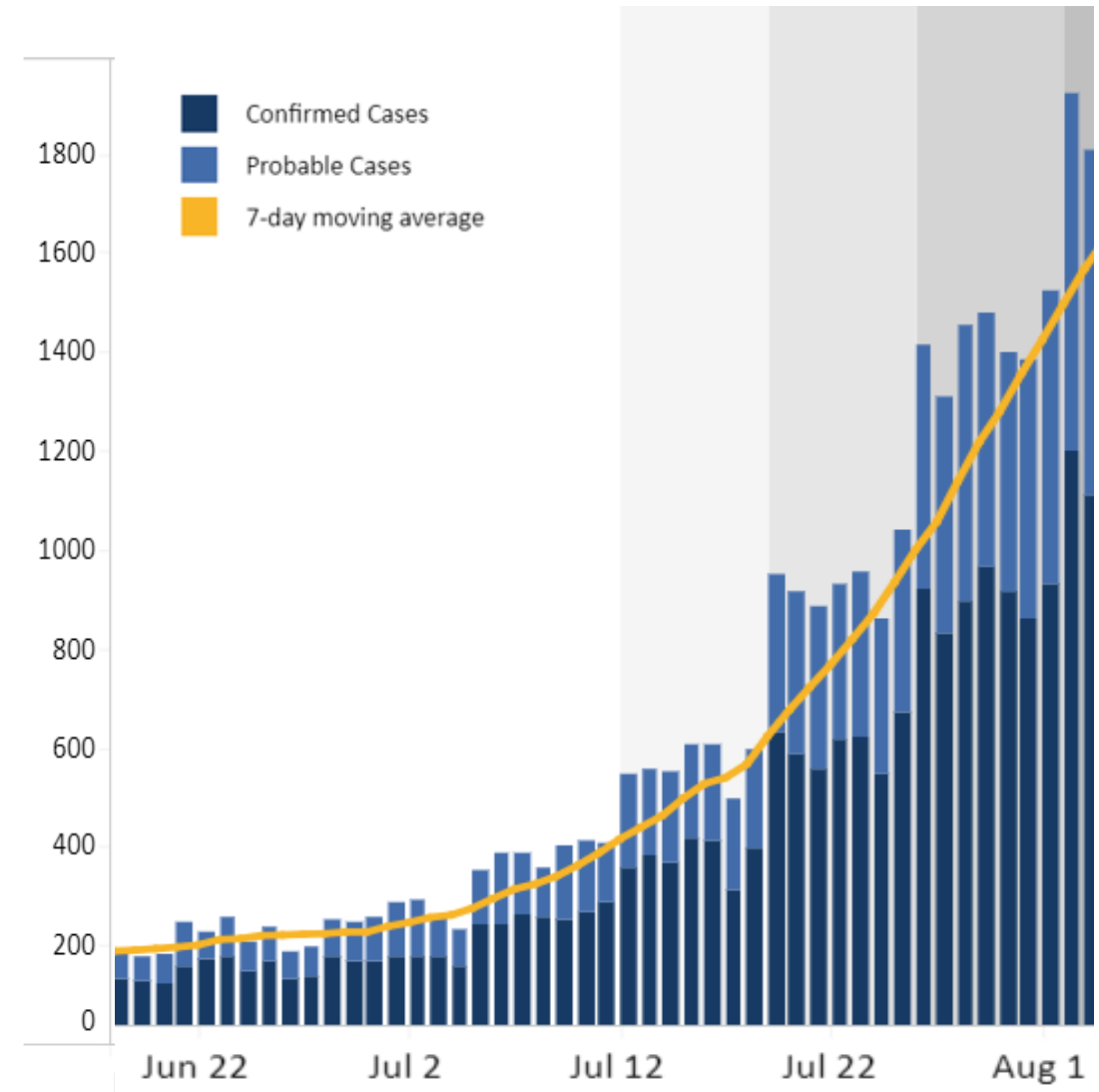
223

Prior 7-Day Average  
Jul 31, 2021 - Aug 06, 2021

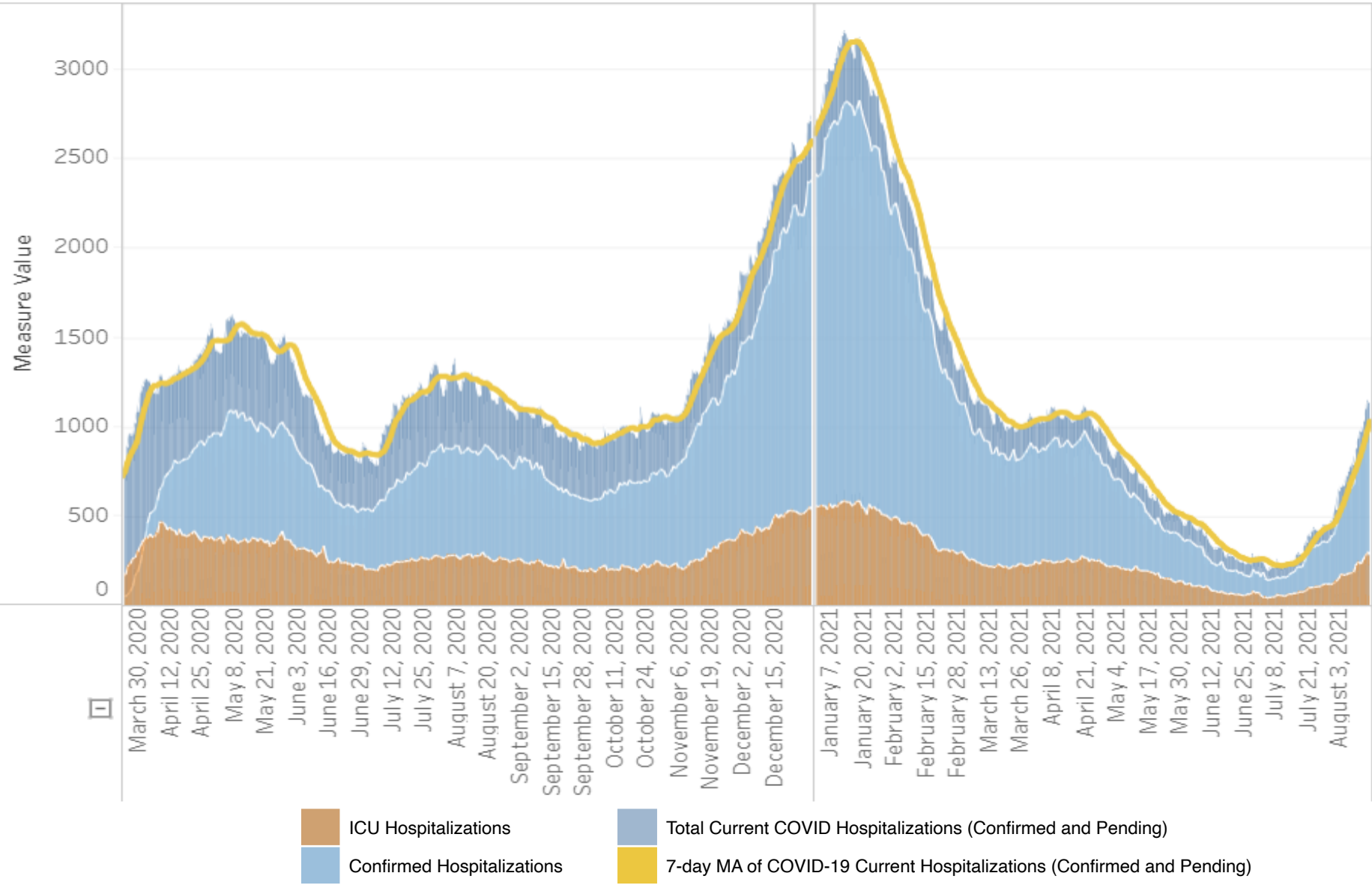
## Cases by Date of Symptom Onset



- Number of new **cases** increased to 2,058 per day (7-day MA) (+27%)
  - 1495% higher than mid-June



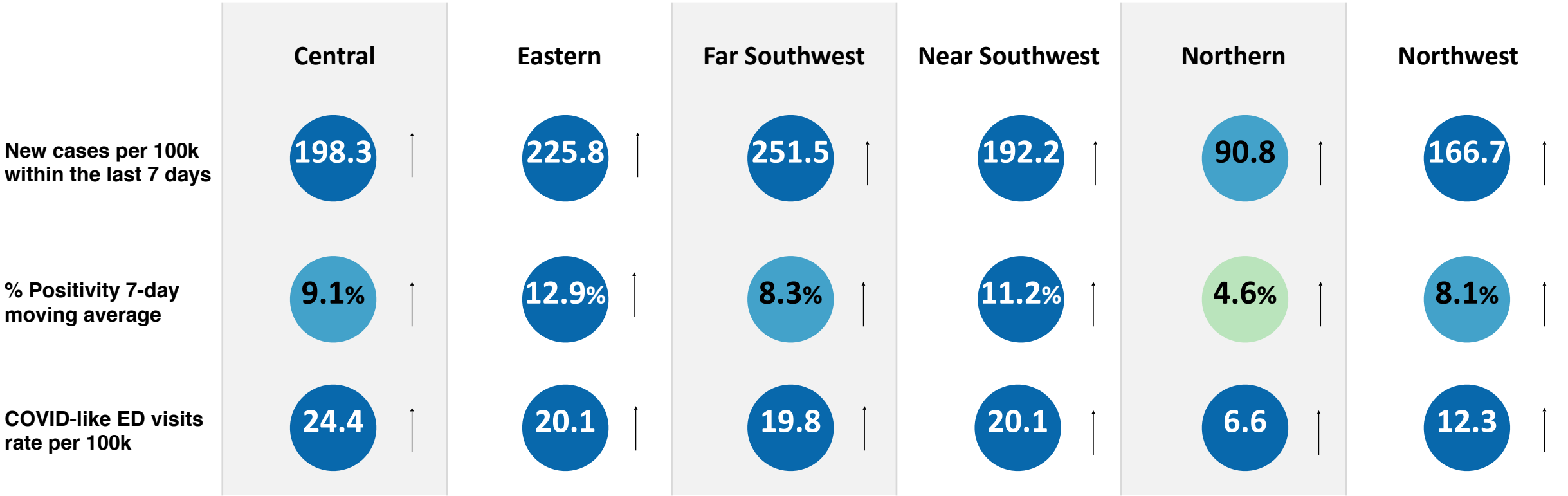
# Number of People Currently Hospitalized with COVID-19 in Virginia



**1,028**  
Current 7-day Average  
Current  
Hospitalizations

**+43.4%**  
% Change in 7-day  
Average

Metrics date: 08/16/2021

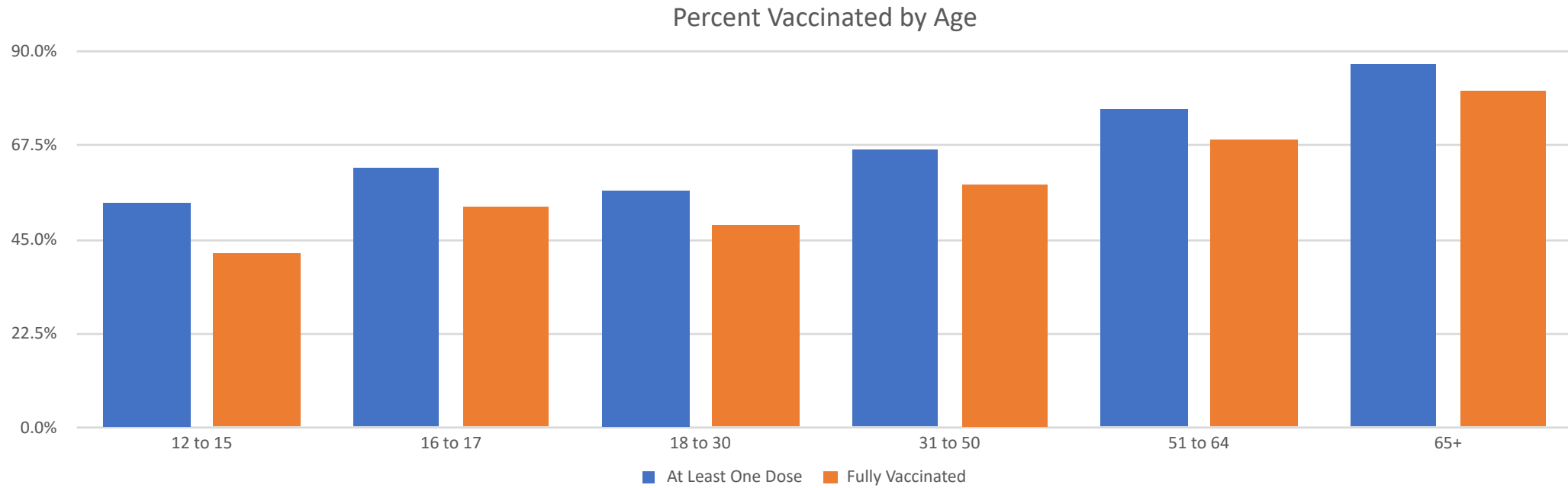


Burden	Level 0	Level 1	Level 2	Level 3	Level 4
New Cases	<10	10-49		50-100	>100
% Positivity	<3	3-5	5-8	8-10	>10
CLI ED Visits	<4		4-5.9		≥6

Symbol	Trend
↑	Increasing
↓	Decreasing
○	Fluctuating

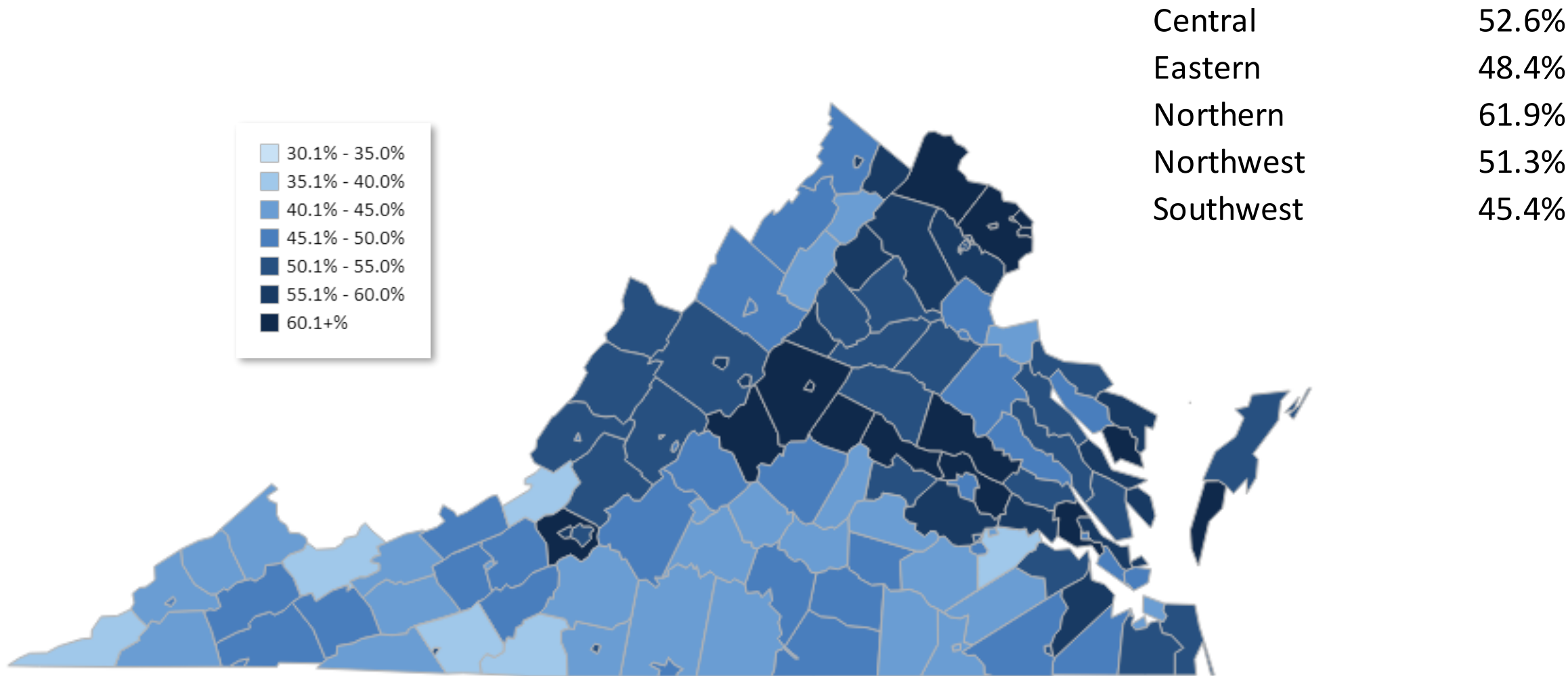
Source: [Region Metrics – Coronavirus](#)  
Data represents a 7-day moving average, trends compared to 1 week ago





✓ **55.2%** of the Total Population Has Been Fully Vaccinated

✓ **64.5%** of the Eligible (12+) Population Fully Vaccinated



Percent of the Total Population with at Least One Dose by Locality

Federal doses not included in this number Source: [COVID-19 Vaccine Summary – Coronavirus \(virginia.gov\)](#)

## Vaccinations per day increased over the last month

- First-dose rate is flattening after a noticeable increase over the past month
  - Still much higher than last month
- All age groups are seeing higher vaccination rates, but adolescents had been increasing at the fastest rate

