

**Access and Public Use Plan for
Canadaway Creek Wildlife Management Area
2021-2026**



Division of Fish and Wildlife
Bureau of Wildlife

Region 9 Sub-Office
182 East Union Street, Suite 3
Allegany, NY 14706
716-372-0645

July 2021



**Department of
Environmental
Conservation**

Prepared by:

Emilio E. Rende, Certified Wildlife Biologist
Land Management & Habitat Conservation Team

Greg G. Ecker, Wildlife Biologist
Justin R. Kindt, Forester I
Nicholas C. Brown, Forestry Technician II
Young Forest Initiative

Reviewed and approved by:

Anne O. Rothrock
Anne Rothrock, Regional Wildlife Manager
Bureau of Wildlife

7/16/2021
Date

James F. Farquhar III, Chief
Bureau of Wildlife &
Acting Director
Division of Fish and
Wildlife

Date



Financial support for development of this plan was provided by the Federal Aid in Wildlife and Sport Fish Restoration Program and non-federal funds administered by the New York State Department of Environmental Conservation including: Environmental Protection Fund, Conservation Fund, and Habitat & Access Stamp.

TABLE OF CONTENTS

<i>SUMMARY</i>	4
<i>I. BACKGROUND AND INTRODUCTION</i>	5
Purpose of Access and Public Use Plans	5
Background.....	5
Scope and Intent	5
Compliance with State Environmental Quality Review.....	5
WMA Regulations	6
<i>II. RECREATIONAL RESOURCES</i>	6
Points of Access.....	6
Connectivity to Other Recreation Areas	6
WMA Features.....	7
Maintaining and Improving WMA Features	7
Parking Areas	8
Roads	8
Trails.....	9
Buildings and Other Permanent Structures	9
Managing Habitat to Provide Recreational Opportunities.....	9
<i>III. PUBLIC USE ACTIVITIES</i>	10
Recreation on WMAs	10
Recreation on Canadaway Creek WMA.....	11
Primary Activities.....	11
Hunting.....	11
Trapping	11
Wildlife observation/bird watching.....	12
Fishing.....	12
Secondary Activities.....	12
Hiking/Biking.....	12
Cross country (Nordic) skiing and snowshoeing	12
Restricted Activities	13
Accessible Recreation	14
Management Challenges.....	15
Permits and User Agreements	15
Temporary Revocable Permits	15
Volunteer Stewardship Agreements	15
<i>IV. MANAGEMENT SUMMARY</i>	16
<i>V. FIGURES</i>	17

<i>VI. APPENDICES</i>	21
Appendix A. Summary of Public Comments and Responses.....	21
Summary of Changes Made to the Plan	21
Comments Received.....	21
Appendix B. Application of the Americans with Disabilities Act	22

LIST OF FIGURES

FIGURE 1. Connectivity to other public lands and recreation areas.....	17
FIGURE 2. Location of existing and proposed access features at Canadaway Creek WMA.	18
FIGURE 3. Roads and trails on Canadaway Creek WMA.....	19
FIGURE 4. Restricted access areas on Canadaway Creek WMA.	20

SUMMARY

Canadaway Creek Wildlife Management Area (WMA) supports a variety of outdoor recreational opportunities. The most popular are hunting, trapping, and fishing. The area has been managed for ruffed grouse since the late 1980s and is well known to grouse and woodcock hunters. The diverse young and mature forest habitat, shrublands, and grasslands make the area well suited for deer hunting, turkey hunting, rabbit and squirrel hunting, grouse hunting, and trapping. The primary management objective for Canadaway Creek WMA is to maintain high quality habitat for ruffed grouse.

The WMA is also very popular for bird watching and wildlife viewing. Bird watchers may encounter a variety of bird species such as yellow-bellied sapsucker, downy woodpecker, hairy woodpecker, northern flicker, pileated woodpecker, and eastern wood-pewee. Several species of warblers such as blue-winged warbler, yellow warbler, chestnut-sided warbler, magnolia warbler, yellow-rumped warbler, and black throated green warbler. There are several ponds on the area that provide wetland habitat for beavers, mink, wood ducks, and Canada geese.

A connector trail, the Earl Cardot Eastside Overland Trail, runs through the WMA and is part of a county-wide trail for hiking, biking, and cross-country skiing. In addition, there is a snowmobile trail in the county-wide trail network that also runs through the area.

The New York State Department of Environmental Conservation (DEC) will continue to provide, promote, and improve public access for wildlife-dependent recreation on this popular WMA.

Management objectives for public use and access on Canadaway Creek WMA include:

- Maintain all existing access infrastructure such as parking areas, kiosks, and administrative roads.
- As needed, develop additional assets for primary wildlife recreation (parking areas, pull-offs, and kiosks).
- Allow for the hiking, biking, cross country skiing, and connector snowmobile trails to exist and be maintained by the county and volunteer groups.
- Continue to manage existing habitat and create additional young forest and grassland habitat as stated in the habitat management plan to improve wildlife-dependent recreation such as hunting, trapping, and wildlife viewing.

I. BACKGROUND AND INTRODUCTION

PURPOSE OF ACCESS AND PUBLIC USE PLANS

BACKGROUND

Providing public access to lands owned by DEC is an integral part of state land management. DEC Division of Fish and Wildlife's (DFW) Bureau of Wildlife (BOW) oversees WMAs, Multiple Use Areas (MUA), Unique Areas, and other properties comprising the WMA system. The Bureau strives to provide safe, convenient, and ecologically-sound public access to these areas.

The priority public use activity on WMAs is wildlife-dependent recreation such as hunting, trapping, fishing, and wildlife observation. Other public use activities may be appropriate if DFW determines they are compatible with both wildlife conservation and the primary public use activities. Guidance on the use and purpose of WMAs and a list of allowable activities is provided in *Public Use of Wildlife Management Areas*.¹

SCOPE AND INTENT

This Access and Public Use Plan (APUP) complements the Habitat Management Plan (HMP) for Canadaway Creek WMA and addresses management objectives for wildlife-dependent recreation, access features, and facility development and maintenance. In conjunction with WMA regulations, APUPs serve as the overarching guidance for providing access to wildlife lands and determining public use activities appropriate for each area. APUPs draw from and build upon other management plans that may exist for the area, including Unit Management Plans (UMP), previous management planning documents, and feedback received during a public comment period.

Primary purposes of this plan:

- To foster compatible wildlife-dependent recreation and wildlife conservation priorities.
- To identify public use activities and access features, highlighting exceptional opportunities specific to the WMA.
- To describe current management challenges and discuss potential solutions.
- To prioritize necessary improvements and proposed new features.
- To establish a maintenance schedule for existing facilities and features.

COMPLIANCE WITH STATE ENVIRONMENTAL QUALITY REVIEW

Activities described in this plan are included in the 1979 *Programmatic Environmental Impact Statement on Public Use Development Activities of the DEC Division of Fish and Wildlife*,² which addressed compliance with the State Environmental Quality Review Act, 6 NYCRR Part

¹ Available online at <https://www.dec.ny.gov/outdoor/7768.html>.

² Available online at https://www.dec.ny.gov/docs/wildlife_pdf/eispublic.pdf

617. All proposed management also requires compliance with the Endangered Species Act, National Environmental Policy Act, the State Historic Preservation Act, Executive Order 13175 *Consultation and Coordination with Indian Tribal Governments*, and CP-42 *Contact, Cooperation, and Consultation with Indian Nations* prior to implementation.

WMA REGULATIONS

NY Codes, Rules and Regulations, Title 6, Chapter 1, Subchapter G, Part 51: Public Use of State WMAs (“Part 51”) lists regulations for public use of WMAs. Part 51 addresses restricted and prohibited uses of WMAs in order to prevent disturbance to wildlife and interference with wildlife-dependent recreation.³ Part 51 is currently in the process of being revised to include necessary changes that will keep up with new or evolving public uses, updated laws, and current use concerns on our New York State WMAs. Some uses listed in this document as “prohibited” or “not allowed” may require these changes to Part 51 to be signed into regulation before being considered illegal on a WMA. Those restrictions of uses requiring revisions to the current Part 51 are still being listed in this document because this plan is aimed at describing the current and future conditions of public use on this WMA. It is anticipated with reasonable certainty that the revisions to Part 51 will be signed into regulation during the life of this document.

II. RECREATIONAL RESOURCES

POINTS OF ACCESS

Canadaway Creek WMA is accessible from a variety of roadways in Chautauqua County. From the north, the area can be accessed from Route 60 and County Route 79 (Center Road). The access from the south is from Route 60 and County Route 77 and from the east and west from County Route 72.

For additional driving directions and a map of WMA roads, see Figures 1 and 2 of the preceding Canadaway Creek WMA Habitat Management Plan (page 28 & 29) or go to the DEC website at: <https://www.dec.ny.gov/outdoor/82659.html>.

CONNECTIVITY TO OTHER RECREATION AREAS

To the south and east of Canadaway Creek WMA is Boutwell Hill State Forest⁴ (2,944 acres).

³ Additional information is available online at <https://www.dec.ny.gov/regulations/regulations.html>

⁴ Available online at: <https://www.dec.ny.gov/lands/8270.html>.

DEC state forest lands are administered by the Division of Lands and Forests and allow access for certain recreational activities comparable to those allowed on the WMA; Figure 1. The Earl Cardot Eastside Overland Trail⁵ runs through the WMA and is part of a county wide trail for hiking, biking, and cross country skiing. There is also snowmobile trail that runs through the area which is part of a county wide trail network.

WMA FEATURES

All structures, roads, trails, and other features are documented to track existing conditions and identify future management actions to maintain, repair, or improve public use and access. Table 1 summarizes the existing and proposed features on Canadaway Creek WMA.

Table 1. Summary of current and desired public use features on Canadaway Creek WMA. Features listed here are those that are available to the public.

Category	Feature	Existing (as of 2021)	Proposed Changes
Parking	Vehicle parking lot	9	No Change
Roads	Public truck trail	0.5 Miles	Maintain
	Administrative road	3 Miles	Maintain
	Gate	7	Increase to 8
Trails	Foot trail	2 Miles	No Change
	Snowmobile trail	7 Miles	No Change
Structural Features	Informational kiosks	3	Increase to 5
Accessible Features	Accessible parking area, trail and hunting blind	0	Increase to 1
Water Bodies	Constructed impoundments	4	No Change
	Ponds/Open water wetlands	1	No Change

MAINTAINING AND IMPROVING WMA FEATURES

DEC will continue to maintain and improve public use and access to WMAs for the purpose of providing the following benefits for WMA visitors:

- Provide opportunities for wildlife-dependent recreation that are compatible with wildlife habitat management practices and species management considerations.
- Educate and inform WMA visitors about wildlife and habitat, DEC programs, safety and regulations, recreational activities, and other information pertinent to the WMA.

⁵ Additional information is available online at: <https://hikechautauqua.com/trails>.

- Provide and improve inclusivity and usability with accessible facilities (i.e., accessibility for people of all abilities).
- Maintain clean and safe facilities.

Each year, BOW's Land Management and Habitat Conservation Team develops a work plan specifying maintenance and improvements to WMAs that will enhance access and use of the areas. Implementation of the management recommendations proposed in this plan is dependent upon availability of staff and funding. Locations of features that will be installed, improved, replaced, or removed are shown in Figure 2.

PARKING AREAS



Current Conditions: Canadaway Creek WMA currently has nine parking areas that are in fair to good condition. They are spread out throughout the WMA and provide access to trails, water bodies, and popular hunting areas.

Actions: The following actions, listed in order of priority, are proposed during the timeframe of this plan:

- Maintain existing parking areas by mowing and adding stone and gravel when needed.
- Improve and upgrade one parking area for a motorized ATV accessible trail.

ROADS

Current Conditions:

Canadaway Creek WMA has approximately 0.5 miles of public road along with approximately 3.0 miles of DEC administrative roads which are in good condition. These roads are maintained to provide access to users of the area and to provide DEC with access for management activities such as shrubland, grassland, and timber management.

The road shoulders are mowed every year to keep vegetation from encroaching the roadway. Also, the roads are raked every year, graded, and re-surfaced periodically. Additional maintenance includes culvert and ditch cleaning along with replacing culverts as needed.

There are seven gates located on the property closed to vehicle access. Two gates are opened for the snowmobile season.



Dibble Hill Road – Canadaway Creek WMA
Photo: Emilio Rende

Actions: The following actions, listed in order of priority, are proposed during the timeframe of this plan:

- Maintain the DEC owned roads by mowing shoulders, raking and grading, ditch and culvert cleaning and re-surfacing when necessary.
- Maintain and/or replace gates and culverts as needed.

TRAILS



Current Conditions: A section of the Earl Cardot Eastside Overland Trail⁶ runs through the WMA. It is part of a county wide trail system that is primarily used for hiking, biking, and cross-country skiing. The Division of Lands and Forests has

Chautauqua County under an agreement to conduct maintenance on the trail which includes the section on the WMA. There is a 0.5-mile trail from Park Road to Center Road and a 0.75-mile trail from Route 72 to Dibble Hill Road.

Actions: The following actions, listed in order of priority, are proposed during the timeframe of this plan:

- Continue to work with Lands and Forests regarding trail maintenance on the Cardot trail.
- Develop a Motorized Access Program for People with Disabilities (MAPPWD⁷) trail, parking area, and hunting blind.

BUILDINGS AND OTHER PERMANENT STRUCTURES



Current Conditions: There are three informational kiosks found at various locations on Canadaway Creek WMA.

Actions: The following actions, listed in order of priority, are proposed during the timeframe of this plan:

- Install two new informational kiosks on Park Road and Center Road.
- Maintain all informational kiosks as needed.

MANAGING HABITAT TO PROVIDE RECREATIONAL OPPORTUNITIES

Canadaway Creek WMA has been actively managed throughout its history, primarily through selective cuts and clear cuts to provide ruffed grouse habitat. Currently, seven percent of the WMA is in early successional habitat (ESH). This ESH is made up of 3% young forest, 2.3% shrubland, and 1.6% grassland. DEC intends to increase young forest an additional 200 acres to 12% along with creating an additional of 5 acres of shrubland to 3% and increasing grassland an additional 45 acres to 3.5%. This increase in acreage will increase early successional habitat to over 18% of the WMA. These habitat types are specifically aimed at providing habitat for upland game birds such as ruffed grouse, woodcock, and wild turkey. Big game, furbearers, and

⁶ Available online at <https://hikechautauqua.com/east-trail/>.

⁷ Additional information is available online at <https://www.dec.ny.gov/outdoor/76213.html>.

many species of songbirds will benefit as well. This management will in turn enhance public use opportunities for hunting, trapping, and wildlife observation.

Young forest is created and maintained using a combination of commercial and non-commercial timber harvesting. This timber management creates a mixture of different age classes of young forest (0-5 years, 5-10 years, 10+ years). Shrubland will be created and maintained by periodic brush mowing and cutting. Grasslands will be created and maintained by brush mowing and periodic block and strip mowing. Fields will be planted with cool season grasses, legumes, and warm season grasses using agricultural equipment. The fields are strip mowed to facilitate pheasant hunting as well.

The following actions, listed in order of priority, are proposed during the timeframe of this plan:

- Design and build an MAPPWD accessible trail and hunting blind west of Park Road.
- HMP forest management implementation: Scheduled cuts in Compartments A, B, C, and D (See HMP, Table 5 on page 14 and 15).
- Shrubland management implementation: Shrubland creation from poor hardwood regeneration and plantation: A-6, B-40, B-46, B-47.2, and B-49 (See HMP, page 19 and 20).
- Grassland management implementation: Poor forest/shrubland/old field conversion to grassland: A-2, A-4, A-9, A-10, A-11, B-7, B-10, and B-17 (See HMP, page 22).

Please refer to page 27 of the HMP for a detailed habitat management summary.

III. PUBLIC USE ACTIVITIES

RECREATION ON WMAS

WMAs are unique among other state lands because they are managed for wildlife conservation and wildlife-dependent recreation. DEC adheres to a set of broad goals based on statutory, regulatory, and policy guidance as a basis to determine compatibility of public uses. Briefly, the primary goals are: (1) providing and enhancing wildlife habitat, and (2) providing and enhancing opportunities for wildlife-dependent recreation. Secondary goals include: (3) fostering understanding and appreciation of wildlife and their habitats, and (4) allowing non-wildlife-dependent recreation when it is compatible with the primary goals. DEC carefully considers public use activities and determines whether they are compatible with these goals and the management objectives specific to each WMA. Some activities may be restricted to protect sensitive wildlife or habitats in specific areas or during certain times of year, or to reduce conflicts between user groups. Some activities may be allowed only under certain conditions or by permit. Other activities are not allowed on WMAs because they conflict with the purposes

and management of WMAs. Activities that are allowed, prohibited, or may require a permit are discussed in *Public Use of Wildlife Management Areas*.⁸

RECREATION ON CANADAWAY CREEK WMA

PRIMARY ACTIVITIES

Primary activities include wildlife-dependent recreation that is compatible with the primary goals and purposes of WMAs. Hunting, trapping, wildlife watching, wildlife/nature photography, and fishing are the primary uses of Canadaway Creek WMA. All statewide hunting, trapping, and fishing regulations apply.⁹



Hunting: Canadaway Creek WMA, located in Wildlife Management Unit (WMU) 9K, provides good hunting for popular game species such as ruffed grouse, American woodcock, and eastern wild turkey. Upland game bird hunting is popular on this WMA due to its management history and abundant suitable habitat. The area has wild apples, hawthorn, dogwood, viburnum, red and white oak, and other mast producing trees and shrubs. Along with the abundance of food, there are many areas of dense understory which provide cover and nesting habitat. The conversion of shrubland to grassland along with the existing grasslands provides suitable habitat and brood rearing for wild turkeys and ruffed grouse.

The HMP will continue to enhance and create early successional habitat through timber, shrubland, and grassland management. Please refer to the HMP for more specific information.

White-tailed deer hunting is also popular on this WMA. The timber management techniques used for upland game birds will benefit deer as well. Opening the forest canopy will stimulate plant regeneration adding browse and cover for deer. The planned management actions are spread throughout the WMA, as are the roads and trails, and will provide good access for the sportsmen and women.

Other hunting opportunities include squirrel and rabbit hunting along with predator (coyote, fox, raccoon) and bear hunting. Squirrels can be found in the stands of hardwood mast producing trees such as oak, hickory, and beech. Eastern cottontail rabbits are in the overgrown apple tree stands and in the brush along the field edges. Black bears prefer the mature hardwood stands and some of the open areas as well.



Trapping: There are many species of furbearers on the area such as: beaver, muskrat, otter, mink, fisher, weasel, raccoon, opossum, red and gray fox, bobcat, coyote, and striped skunk. Good areas for water trapping beavers are found along several drainages that flow through the area and in some of the ponds. There are small streams and culverts that provide good areas for muskrat trapping, too. The many fields and openings provide good areas

⁸ Available online at <https://www.dec.ny.gov/outdoor/7768.html>

⁹ Available online at <https://www.dec.ny.gov/regs/2494.html>

for land trapping as well. Also, many of the management practices for creating early successional habitat will provide food and cover for the furbearer prey species such as small mammals, rodents, and cottontail rabbits.



Wildlife observation/bird watching: The diverse habitat at Canadaway Creek WMA makes it favorable for wildlife viewing especially bird watching. There are several trails, ponds, and fields that provide good access throughout the area to view wildlife. Bird watchers may encounter field sparrow, savannah sparrow, song sparrow, bobolink, eastern meadowlark, goldfinch, northern flicker, pileated woodpecker, eastern wood-pewee, eastern kingbird, along with several species of warblers such as blue-winged warbler, yellow warbler, chestnut-sided warbler, magnolia warbler, yellow-rumped warbler, black throated green warbler, and common yellowthroat. Some common waterfowl are wood ducks, mallards, and blue and green winged teal. Birds of prey may be spotted as well, such as broad-winged hawk, red-tailed hawk, American kestrel, and barred owl.



Fishing: The upper section of Canadaway Creek along with several tributaries flow through the WMA. The stream is stocked with a fair number of brown and brook trout. There are also several ponds on the area that contain warm water species such as blue-gill, pumpkinseed, and largemouth bass. The roads and trails provide good access throughout the area.

SECONDARY ACTIVITIES

Secondary activities are not necessarily wildlife-dependent, but they are generally compatible with the goals and purposes of WMAs. Secondary activities including hiking, bicycling on WMA roads, cross country (Nordic) skiing, and snowshoeing are generally compatible with the goals of Canadaway Creek WMA. These activities are also permitted when used in conjunction with a primary activity (e.g., snowshoeing to go hunting or trapping).



Hiking and Biking: Hiking and biking are popular secondary uses permitted at Canadaway Creek WMA. The county-wide Earl Cardot Eastside Overland Trail runs through the WMA and is maintained by Chautauqua County through a cooperative agreement.



Cross country (Nordic) skiing and snowshoeing: Cross country skiing and snowshoeing are allowed on the WMA. Cross country skiing is allowed on the Earl Cardot Eastside Overland Trail. We believe that the disturbance to wildlife is minimal with these types of activities and are an excellent way to view and enjoy wildlife.

RESTRICTED ACTIVITIES

Restricted activities are typically not wildlife-dependent and have the potential to adversely affect wildlife or wildlife-dependent recreation.

The following restricted activities may be allowed on Canadaway Creek WMA on a limited basis, with conditions and/or a permit:

Snowmobiling: Snowmobiles are only allowed on approved connector trail segments which include designated segments of administrative roads and town roads. These trails are maintained by a local snowmobile club under a Volunteer Stewardship Agreement (VSA). These machines have the potential to disturb wintering wildlife, hunters, and trappers etc.

Operating motorized vehicles, including ATVs: As mentioned earlier, snowmobiles are permitted to cross the WMA solely for the purpose of connecting one approved designated trail to another. Snowmobiles are not allowed off trail and their use must not disturb wildlife or wildlife habitats and wildlife-dependent recreation in any way. We are proposing a designated route for Motorized Access Permit for People with Disabilities (MAWPPD) off Park Road. This designated route is for ATV use for people with disabilities that have the special use permit.

Dog training: Training dogs on wild game is permitted during the training season (August 16 to April 15). All other training, dog trials, and any training outside the training season dates requires a permit from the regional DEC office. “Dog training” is defined as a single dog owner(s) who has direct control and supervision over the dog while engaged in activities at teaching the dog(s) to pursue or retrieve wild game. Other dog training activities that involve a gathering or group of dogs and owners will be considered a “dog trial” and will require a permit from the regional DEC office to use the WMA.

Collecting edible plants, fruit, or fungi:

The following restricted activities on Canadaway Creek WMA are authorized only under permits issued through the Regional DEC office:

- Dog trials and group training events
- Organized competitive races or group events
- Geocaching
- Use of motorized equipment is restricted.

The following activities are not allowed on Canadaway Creek WMA:

- Mechanized boating
- Overnight mooring or boat storage
- Swimming
- Fires, except for cooking or warmth
- Picnicking
- Camping
- Horseback riding
- Target shooting

ACCESSIBLE RECREATION



Providing Accessible Recreation through the WMA System: Wildlife-dependent recreational opportunities are available on many state lands for people of all ages and abilities.^{10,11} The WMA system includes accessible trails, hunting blinds, observation platforms, canoe launches, and other opportunities for visitors to hunt, fish, observe, and enjoy wildlife. Throughout the WMA system:

- Service animals (dogs, miniature horses) are welcome at all DEC facilities.
- Hunters with disabilities can apply for various special permits and reduced fee licenses through DEC's Special Licenses Unit.¹²
- Through the Motorized Access Program for People with Disabilities (MAPPWD), DEC has established vehicular routes on certain WMAs to facilitate access for wildlife-dependent activities. These mapped routes are accessible by permit only, available through DEC's regional offices.¹³
- WMA visitors may apply for accommodation permits to request use of power-driven mobility devices on state lands beyond MAPPWD routes.¹⁴ Applications for special accommodation are available through DEC's regional offices.
- To maintain and improve access for persons with disabilities, DEC employs a network of accessibility coordinators throughout the regions and in Central Office (Albany).
- Accessible destinations are shown on DEC's Accessible Recreation Destinations webpage. All WMA maps and webpages show available accessible features and how to get to them.

While not all existing facilities on WMAs are accessible, new features or existing features requiring repair will be evaluated and designed to be inclusive and accessible to the greatest extent possible while retaining the ecological integrity and wildlife value of the site.

Management proposed in this plan is in accord with the Americans with Disabilities Act (ADA), the Architectural Barriers Act of 1968 (ABA), the Rehabilitation Act of 1973, Title V, Section 504, the Application of the Americans with Disabilities Act Accessibility Guidelines (ADAAG), and Principles of Universal Design. For more information on how DEC follows ADA guidelines on WMAs please see Appendix B at the end of this document.

Accessible Recreation on Canadaway Creek WMA: During the development of this plan, an inclusivity assessment was completed at Canadaway Creek WMA to determine the current accessible features, determine their condition, and identify appropriate actions such as updating existing facilities or installing new ones. Currently, there are no accessible features on this WMA.

Recommendations for improving usability and inclusivity of wildlife-related recreation are included in this plan. The existing and proposed accessible features on this WMA are also noted in Table 1 and throughout the *Public Use Activities* section above.

¹⁰ Information about accessible recreation on state lands is available at <https://www.dec.ny.gov/outdoor/34035.html>.

¹¹ Information about public use of State Forests is available in the *Strategic Plan for State Forest Management* at https://www.dec.ny.gov/docs/lands_forests_pdf/spsfmfinal.pdf.

¹² Information about special permits is available at <https://www.dec.ny.gov/permits/30419.html>.

¹³ Information about MAPPWD is available at <https://www.dec.ny.gov/outdoor/2574.html>.

¹⁴ Information about accommodation permits is available at <https://www.dec.ny.gov/outdoor/73029.html>

MANAGEMENT CHALLENGES

Providing safe, accessible, and ecologically responsible public access on WMAs requires balancing recreation with wildlife and habitat conservation. Challenges may arise when these two priorities conflict, such as balancing protection of and providing access to or through inherently fragile habitats (e.g., wetlands, dunes). Responsible management of public access requires maintaining miles of property boundaries, working with user groups to minimize impacts of certain activities, and enforcing violations. This requires regulatory support as well as constant mindfulness of the unique purpose of WMAs.

On Canadaway Creek WMA, there are some challenges to maintaining and managing the property. We have had issues with people cutting locks on gates and driving four-wheel drive trucks on administrative roads. Other challenges such as illegal use of all-terrain vehicles(ATVs) and the dumping of tires, garbage, and other debris occur as well.

PERMITS AND USER AGREEMENTS

TEMPORARY REVOCABLE PERMITS

Temporary Revocable Permits (TRPs) are short-term permits for certain individual or group activities or events on DEC-managed public lands.¹⁵ A TRP may be required for some activities on WMAs. TRPs are issued by DEC regional offices and can be revoked at any time due to violations of TRP conditions. TRPs are issued to National Grid to maintain the utility poles that are on the area. Other TRPs are issued on a case-by-case basis.

VOLUNTEER STEWARDSHIP AGREEMENTS

Volunteer Stewardship Agreements (VSAs) are issued when an individual or organization engages in activities to provide positive benefits to state lands.¹⁶ For example, a VSA may be established for a local trail group to maintain a hiking trail on a WMA. VSAs are issued by DEC regional offices.

The Division of Lands and Forests currently has a VSA for the local snowmobile club to maintain the existing connector trails that run through Boutwell Hill SF and through Canadaway Creek WMA.

¹⁵ Information about TRPs is available at <https://www.dec.ny.gov/regulations/51387.html>.

¹⁶ Information about VSAs is available at <https://www.dec.ny.gov/regulations/90822.html>.

IV. MANAGEMENT SUMMARY

In summary, Table 2 lists facility maintenance and public access actions planned for Canadaway Creek WMA for the duration of this plan. Location of management actions are shown in Figure 2. Completion of actions are dependent on staff and funding availability.

Table 2. Summary of management actions recommended for Canadaway Creek WMA, 2021-2026.

Description of Action	Priority	Estimated cost ^a
Create 200 acres of young forest to facilitate improved access for hunting, trapping, and wildlife viewing.	High	Variable
Create 5 acres of additional shrubland habitat to provide foraging, nesting, and escape cover for various species of wildlife.	High	\$15,000
Enhance grassland fields by converting 45 acres of shrubland, poor growth forest and old growth field for upland bird hunters, trappers, and birders.	High	\$35,000
Develop one accessible hunting blind, trail, and parking area.	High	\$45,000
Maintain 4.0 miles of DEC owned roads with shoulder mowing, ditching, raking, and re-surfacing when necessary.	High	\$2,000/yr.
Maintain 3 existing informational kiosks and install 2 new ones.	Medium	\$1,500
Maintain all existing parking areas/pull-offs and add new parking areas/pull-offs as needed.	Medium	\$1,000
Maintain all existing gates and add new gates if needed.	Medium	\$800

^a Cost estimate provided for planning purposes only and is subject to change.

V. FIGURES

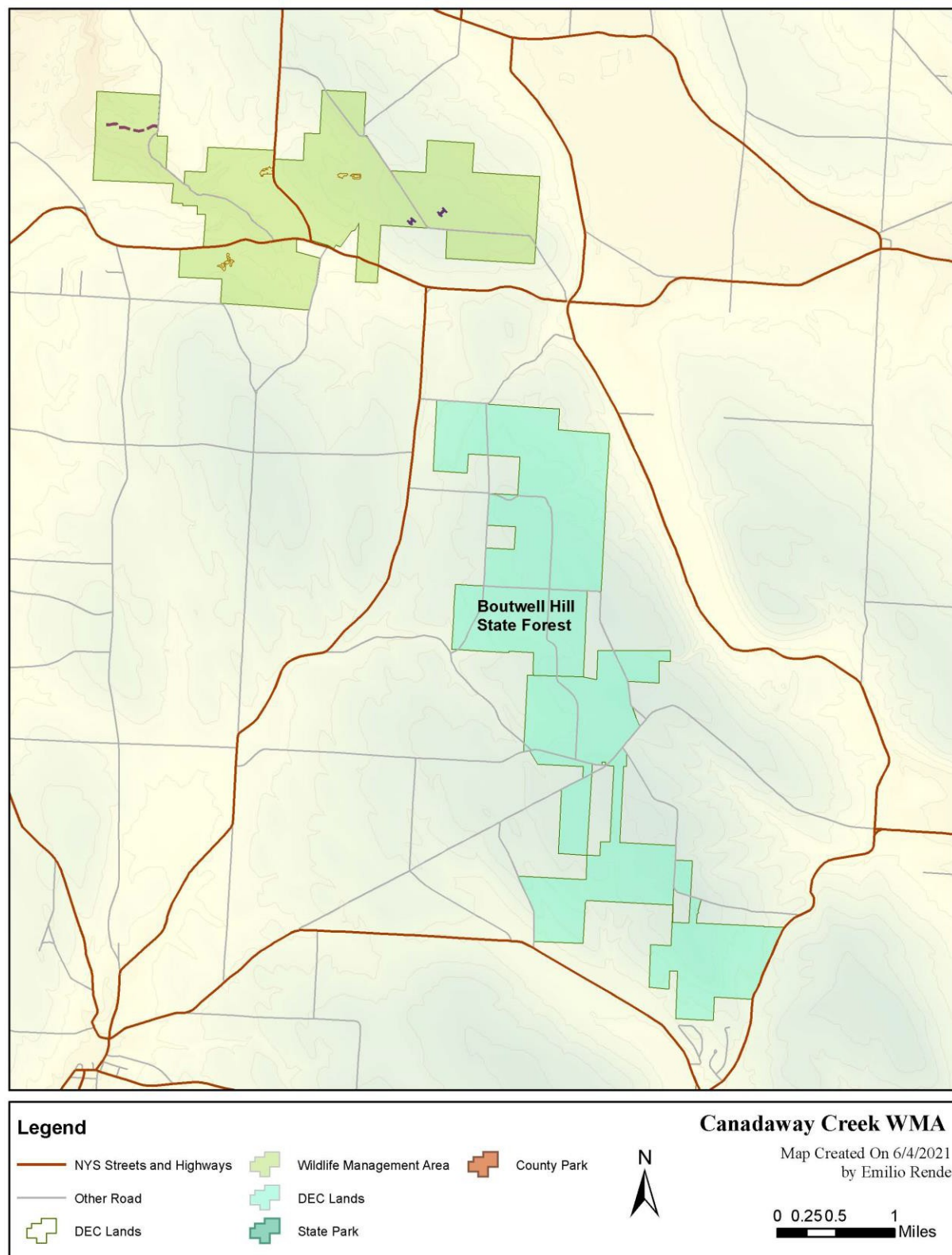


FIGURE 1. Connectivity to other public lands and recreation areas.

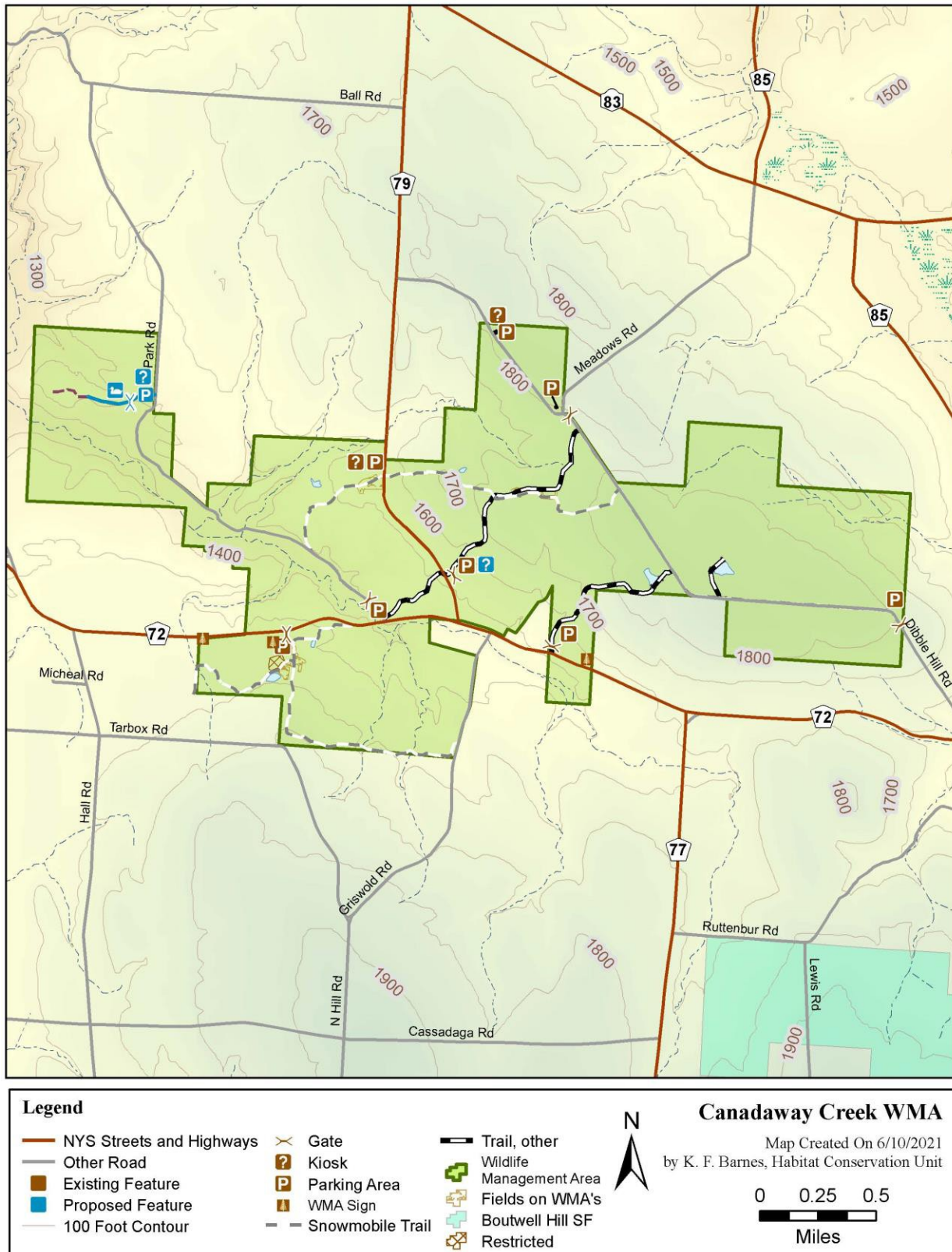


FIGURE 2. Location of existing and proposed access features at Canadaway Creek WMA.

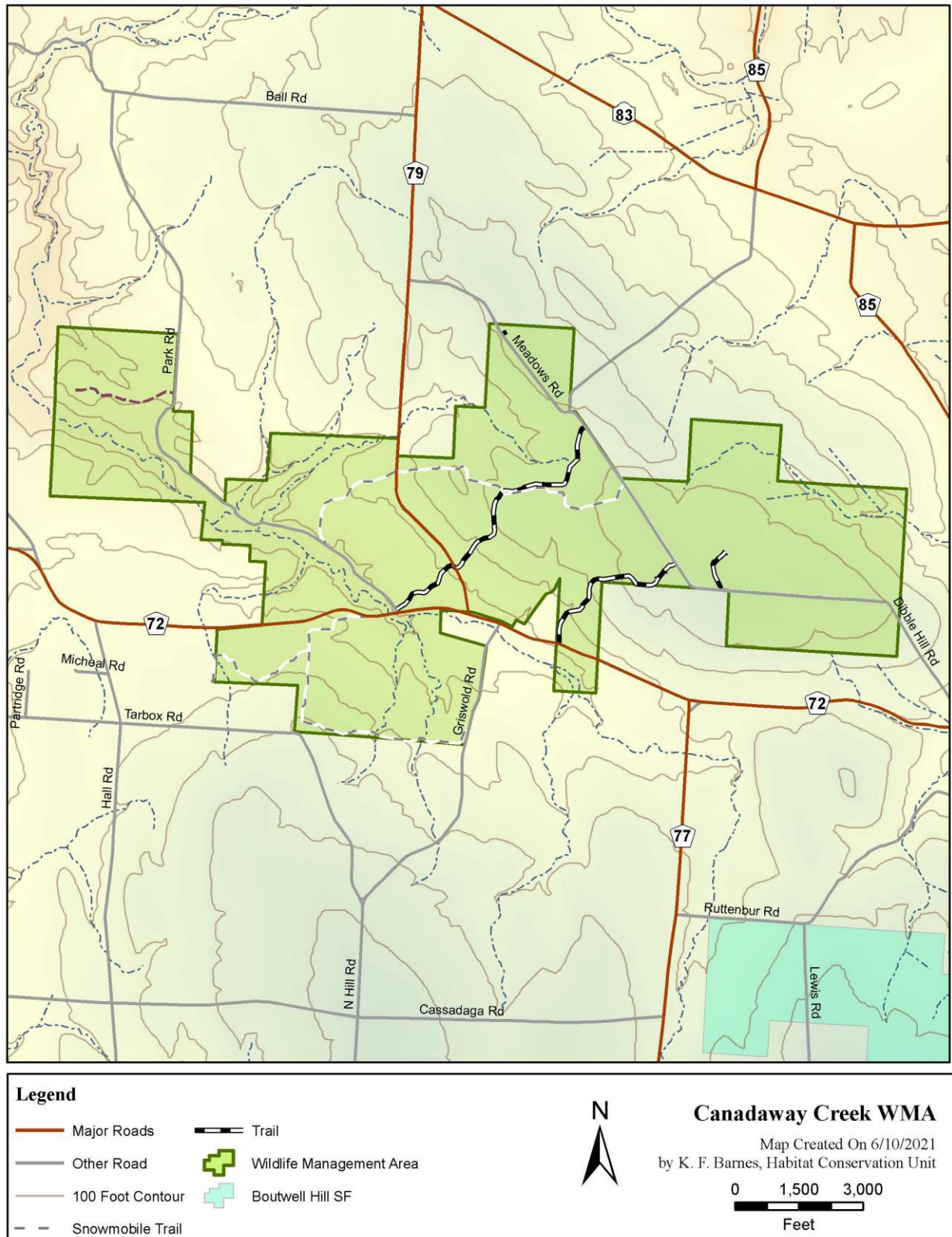


FIGURE 3. Roads and trails on Canadaway Creek WMA.

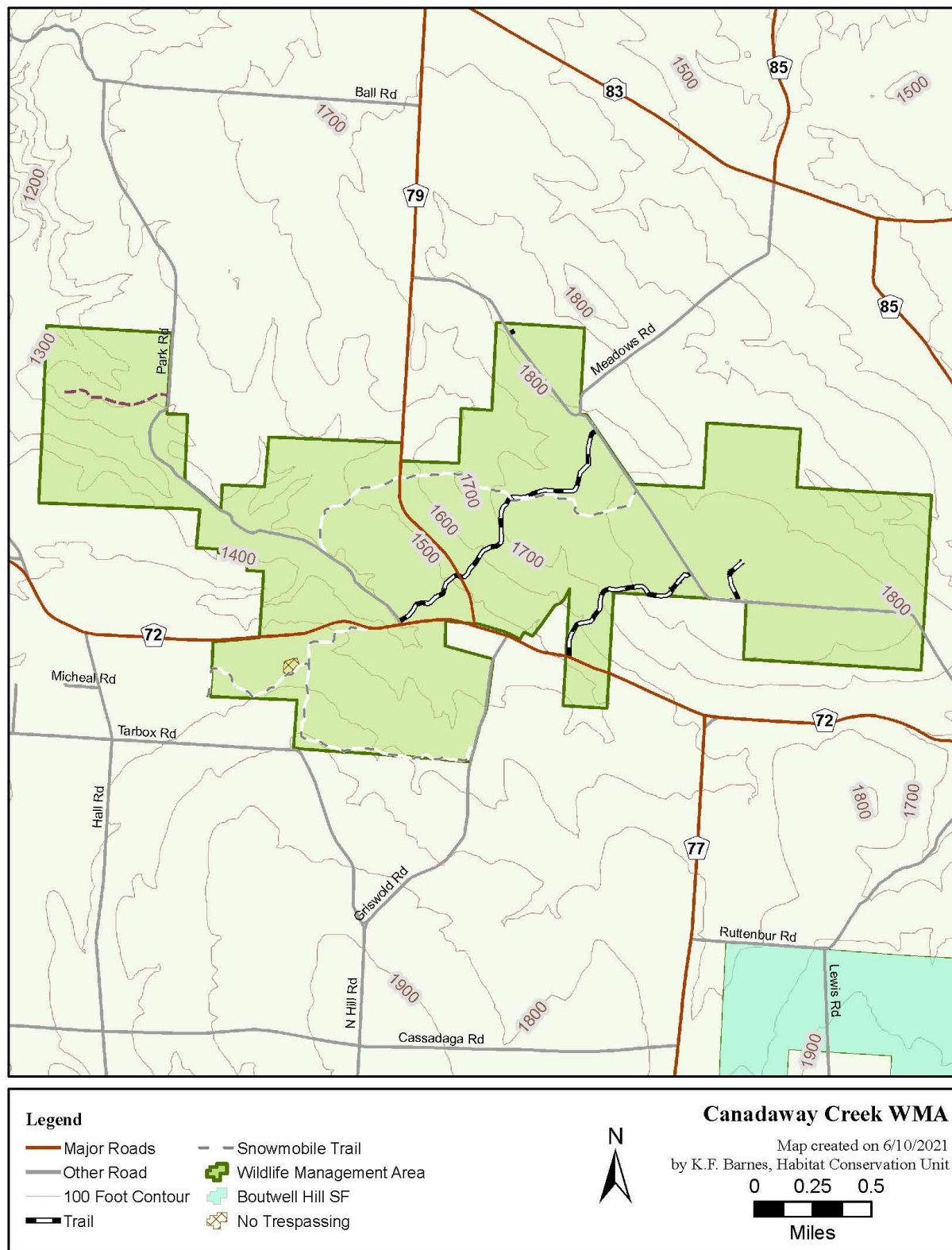


FIGURE 4. Restricted access areas on Canadaway Creek WMA.

VI. APPENDICES

APPENDIX A. SUMMARY OF PUBLIC COMMENTS AND RESPONSES

The following is a summary of the public comments that were received during the creation of the Canadaway Creek Access and Public Use Plan and subsequent changes to the plan. Comments are in **bold** text, with DEC responses in *italics*.

SUMMARY OF CHANGES MADE TO THE PLAN

COMMENTS RECEIVED

APPENDIX B. APPLICATION OF THE AMERICANS WITH DISABILITIES ACT

The Americans with Disabilities Act (ADA), along with the Architectural Barriers Act of 1968 (ABA) and the Rehabilitation Act of 1973; Title V, Section 504, have had a profound effect on the manner by which people with disabilities are afforded equality in their recreational pursuits. The ADA is a comprehensive law prohibiting discrimination against people with disabilities in employment practices, use of public transportation, use of telecommunication facilities and use of public accommodations.

Consistent with ADA requirements, the Department incorporates accessibility for people with disabilities into the siting, planning, construction and alteration of recreational facilities and assets supporting them.

In addition, Title II of the ADA requires in part, that services, programs and activities of the Department, when viewed in their entirety, are readily accessible to and usable by people with disabilities. The Department is not required to take any action which would result in a fundamental alteration to the nature of the service, program or activity or would present an undue financial or administrative burden. When accommodating access to a program, the Department is not necessarily required to make each existing facility and asset accessible, as long as the program is accessible by other means or at a different facility.

This plan incorporates an inventory of all the recreational facilities and assets on the unit or area, and an assessment of the programs, services and facilities provided to determine the level of accessibility. In conducting this assessment, DEC employs guidelines which ensure that programs are accessible, including buildings, facilities, and vehicles, in terms of architecture and design, transportation and communication to individuals with disabilities.

For outdoor recreation facilities not covered under the current ADA standards, the Department will use standards provided under the Architectural Barriers Act, to lend credibility to the assessment result and to offer protection to the natural resource.

All new facilities, and parts of facilities that are constructed for public use, are to be accessible to people with disabilities. Full compliance is not required where DEC can demonstrate that it is structurally impracticable to meet the requirements. Compliance is considered structurally impracticable only in those rare circumstances where the unique characteristics of terrain prevent the incorporation of accessibility features. Compliance is still required for parts of the facility that can be made accessible to the extent that it is not structurally impracticable, and for people with various types of disabilities.

A record of accessibility determination is kept with the work planning record. Any new facilities, assets and accessibility improvements to existing facilities or assets proposed in this plan are identified in the section containing proposed management actions.

For further information contact the ADA Coordinator at accessibility@dec.ny.gov