

REVISED PROPOSED SCOPE OF GLASGOW MS BOUNDARY STUDY

School Board Regular Meeting
Action Item
March 21, 2024



Background

- Glasgow Middle School (MS) has a capacity utilization of 95% for SY 2023-24.
 - The capacity utilization is projected to reach 100% for SY 2028-29.
- The student membership is 1,722.
 - School Board Policy 8120 identifies the preferred maximum of 1,350 student program capacity for middle school (grades 7-8).
- On July 13, 2023, the School Board adopted a motion to complete the Glasgow Middle School scoping study concurrently with the development of the Proposed FY25-29 Capital Improvement Program.
- Staff held community boundary scoping meetings in August and September 2023, as required and outlined in Regulation 8130, *Local School Boundaries, Program Assignments, and School Closings*.
- On February 22, 2024, the School Board was presented with an initial scope for the boundary study. The School Board requested that the scope be narrowed and presented again at a later meeting.

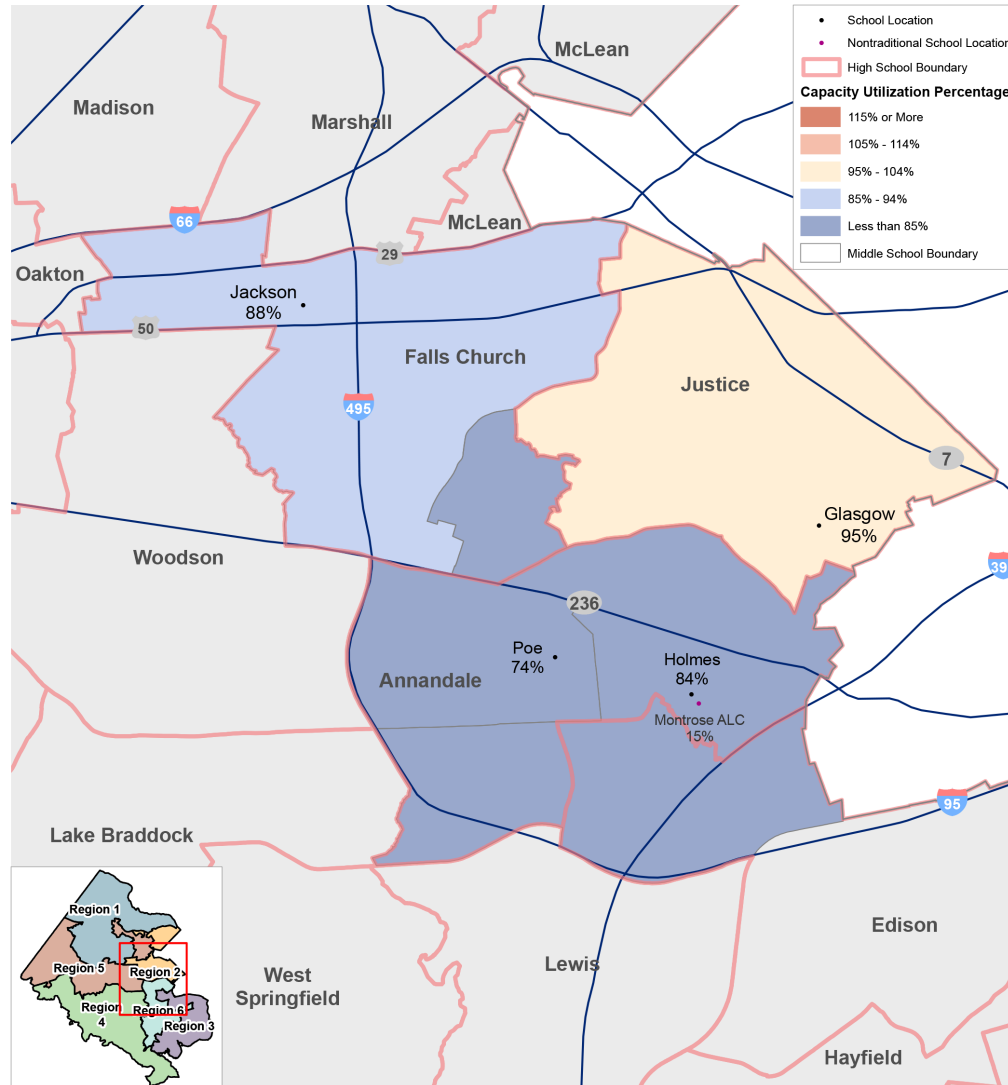
Solutions Implemented at Glasgow MS

SCHOOL YEAR	MEMBERSHIP	PROGRAM CAPACITY UTILIZATION	SOLUTIONS IMPLEMENTED OR IN PROGRESS
SY 2014-15	1,632	98%	A. Increased efficiency by reassigning instructional spaces within a school to accommodate increase in membership.
SY 2015-16	1,677	103%	A. Increased efficiency by reassigning instructional spaces within a school to accommodate increase in membership.
SY 2016-17	1,734	103%	A. Increased efficiency by reassigning instructional spaces within a school to accommodate increase in membership.
SY 2017-18	1,742	107%	A. Increased efficiency by reassigning instructional spaces within a school to accommodate increase in membership. F. Capacity enhancement through either a modular or building addition
SY 2018-19	1,807	97%	A. Increased efficiency by reassigning instructional spaces within a school to accommodate increase in membership.
SY 2019-20	1,906	99%	A. Increased efficiency by reassigning instructional spaces within a school to accommodate increase in membership.
SY 2020-21	1,929	N/A	A. Increased efficiency by reassigning instructional spaces within a school to accommodate increase in membership.
SY 2021-22	1,832	96%	A. Increased efficiency by reassigning instructional spaces within a school to accommodate increase in membership.
SY 2022-23	1,783	94%	A. Increased efficiency by reassigning instructional spaces within a school to accommodate increase in membership.
SY 2023-24	1,722	95%	A. Increased efficiency by reassigning instructional spaces within a school to accommodate increase in membership. H. Potential boundary adjustment with other schools identified as having a capacity surplus.

Source: FCPS, *Capital Improvement Programs*, FY 2016-20 to FY 2025-29.

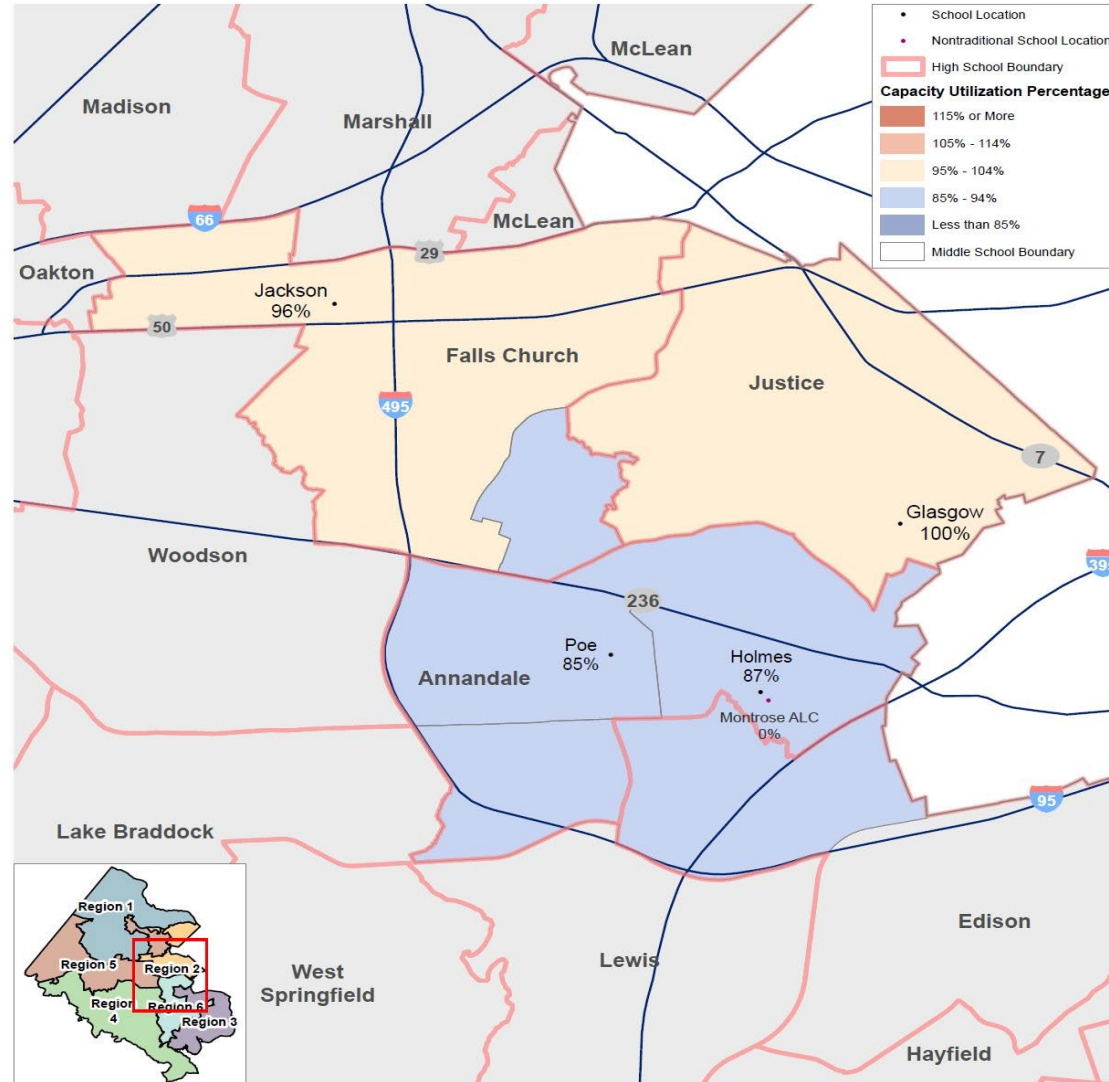
Data available at <https://www.fcps.edu/facilities-planning-future/facilities-and-membership-dashboards>

Middle School Capacity Current SY 2023-24



Notes:
 1. Based on SY 2023-24 boundaries.
 2. Nontraditional school capacity is based on the school's overall membership and is included on this map due to the grade levels served at the location.

Middle School Capacity Projected SY 2028-29



Notes:
 1. Based on SY 2023-24 boundaries.
 2. Nontraditional school capacity is based on the school's overall membership and is included on this map due to the grade levels served at the location.

Capacity and Membership of Area Schools

School	Design Capacity	SY23-24 Program Capacity	SY23-24 Membership	SY 23-24 Program Capacity Utilization %	Temporary Classrooms	Modular Classrooms	SY 28-29 Projection	SY 28-29 Capacity Utilization %
Glasgow MS	1,959	1,809	1,722	95%	-	10	1,814	100%
Glasgow MS w/o Modular	1,689	1,674	1,722	103%	-	-	1,814	108%
Holmes MS	1,176	1,058	889	84%	-	-	924	87%
Jackson MS	1,314	1,089	958	88%	6	-	1,051	96%
Poe MS	1,356	1,202	890	74%	5	-	1,027	85%

Source: FCPS, FY 2025-29 Capital Improvement Program, December 2023.

Summary of Feedback: Community Scoping

- Approximately 159 participants attended the August 29 and September 11, 2023 community scoping meetings.
- Online Feedback form was open for two weeks following the meeting.
 - 198 responses to the online feedback
- Feedback for Schools included:
 - More than 100 responses included:
 - Poe MS
 - Holmes MS
 - Jackson MS
 - Responses also included:
 - Justice HS
 - Falls Church HS
 - Oakton HS
 - Thoreau MS
 - Annandale HS

Summary of Feedback: Community Scoping (cont'd)

- Major Feedback Themes:
 - Capacity and/or overcrowding
 - Concerns over moving AAP Center
 - AAP Programs and the impacts
 - Safety
 - 6th through 8th grade configuration and K-5 Grade alignment

Community feedback has been posted to:

<https://www.fcps.edu/facilities-planning-future/glasgow-capacity>

Boundary Adjustment Process (Regulation 8130)

1. Community Meeting

- **Boundary Scoping:** The community is asked to suggest which schools and areas should be considered; may be done in advance of a Scope of Boundary Study presentation to the School Board.

2. **Scope of Boundary Study Presentation:** A scope of study for schools to be considered is presented to the School Board for approval.

3. Community Meeting(s)

- **Boundary Study:** Possible boundary change options are prepared by staff for consideration with the community and to collect feedback on the options.

4. **School Board Meeting/New Business:** Staff present a recommendation for a boundary adjustment to the School Board.

5. **School Board Public Hearing:** The School Board holds a Public Hearing on the boundary adjustment being considered.

6. **School Board Meeting/Action:** The School Board votes on a decision for the boundary adjustment.

Timeline

August 29, 2023 September 11, 2023	Boundary Scope Community Meetings
February 22, 2024	Initial Boundary Scope Recommendations Presented to School Board
Today	Revised Boundary Scope Recommendations Presented to School Board
Spring 2024	Boundary Study Community Meetings
Spring 2024	Public Hearing
Spring 2024	School Board Action
Fall 2025	New Boundary Effective (Anticipated 2025-26 School Year)

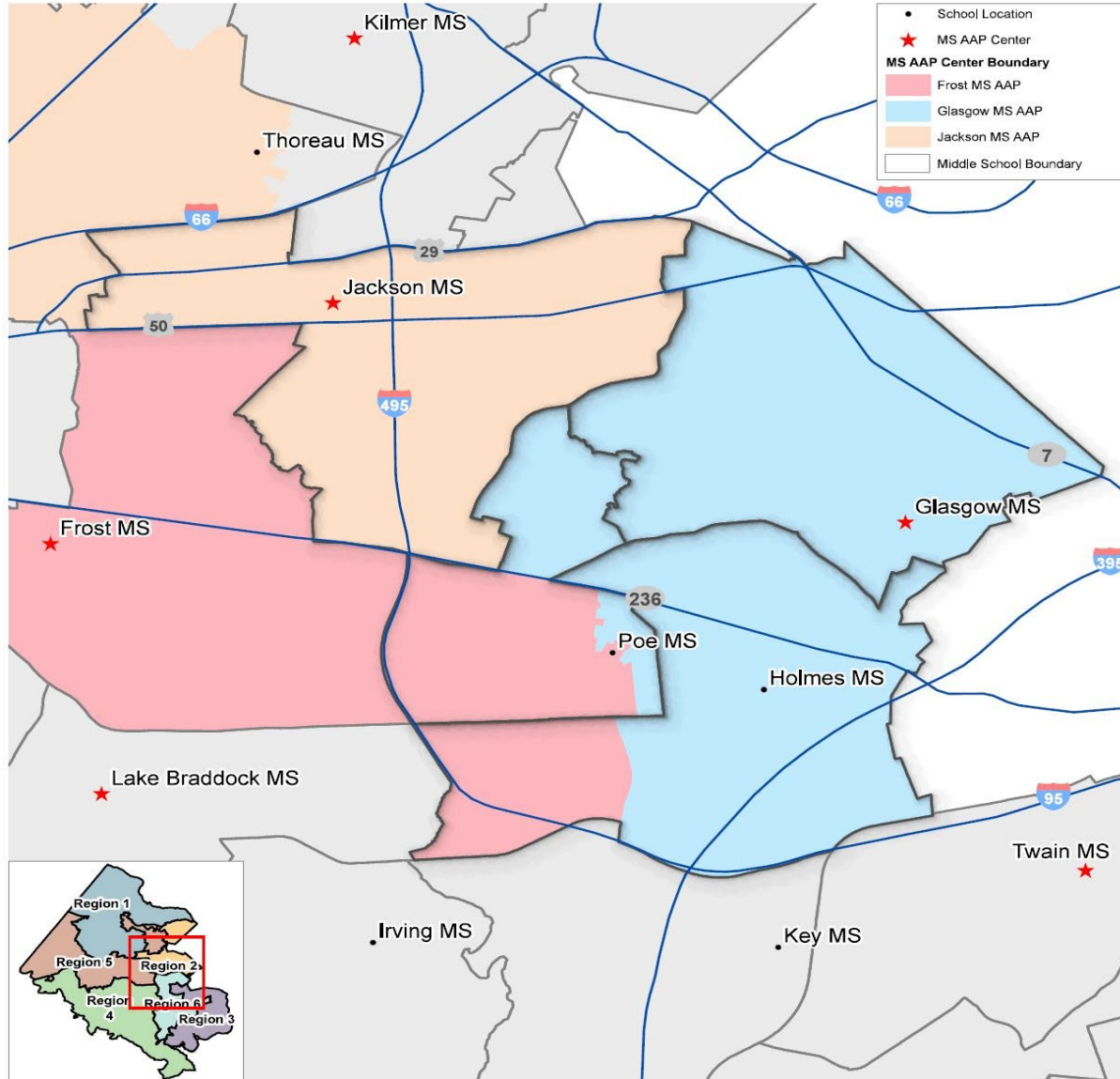
Consideration

- Revised recommendation that the boundary study scope include **Glasgow MS, Holmes MS, and Poe MS** in the boundary adjustment.
- To consider the implications to high schools based upon the outcomes of the middle school adjustments.
- Multiple strategies to reduce Glasgow MS to a membership of 1,350 students or below with the density and geography of area in the Glasgow MS boundary.
- The revised scope ***removed the following areas*** from consideration:
 - Advanced Academic Program (AAP) Local Level IV Center boundaries at Glasgow MS AAP, Frost MS AAP, Belvedere ES AAP, and Canterbury Woods ES AAP.



www.fcps.edu

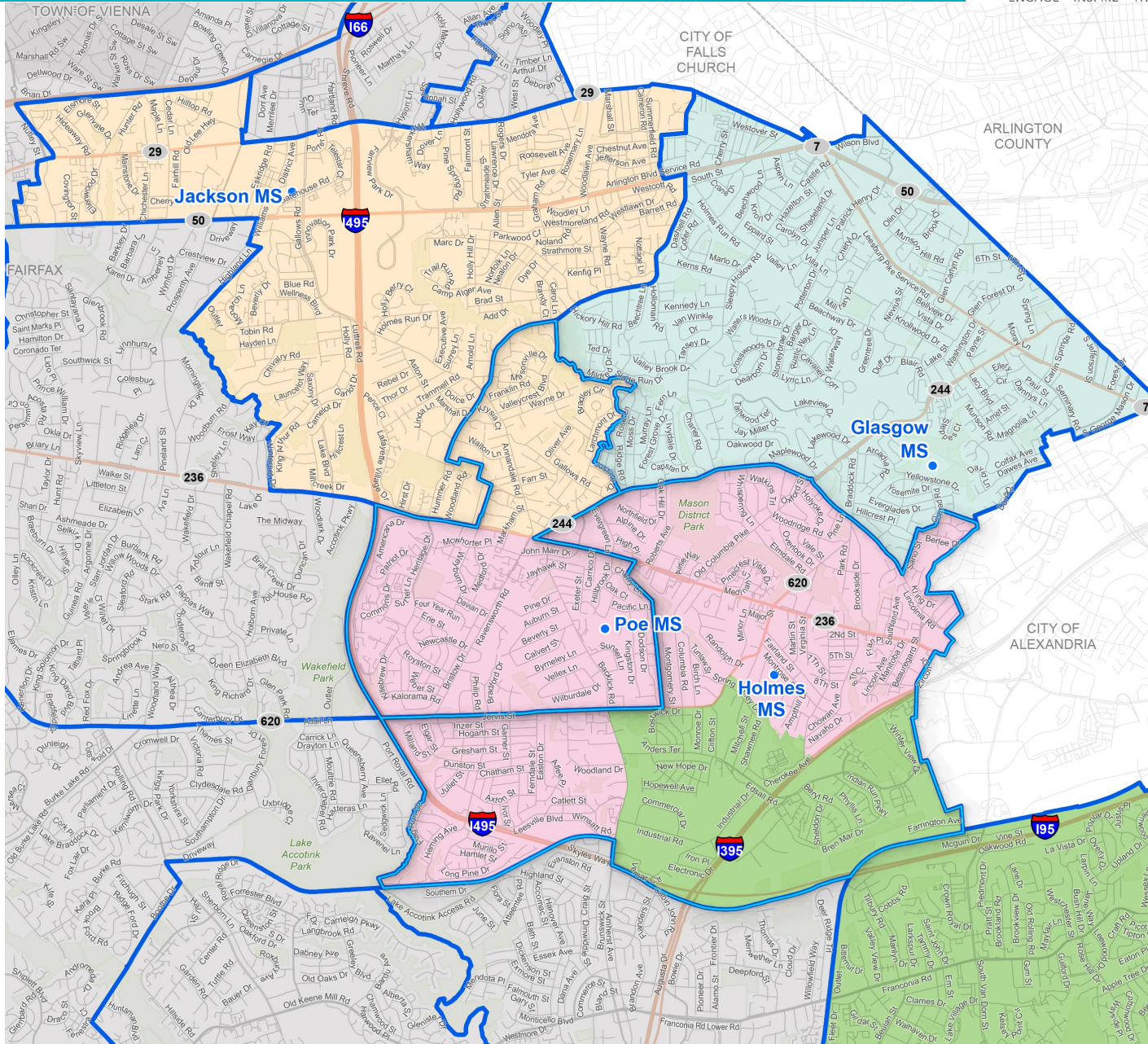
Middle School AAP Level IV Center Boundaries SY 2023-24



Note: Based on SY 2023-24 boundaries.

Glasgow Middle School (MS) Boundary Study

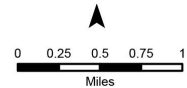
High School (HS)
Boundaries with
MS Boundaries



- Middle Schools
- ▭ Middle School Boundaries
- ▭ Split Feeder MS Boundary
- ▭ Current High School Boundaries
 - ▭ Annandale
 - ▭ Edison
 - ▭ Falls Church
 - ▭ Justice

Source:
Fairfax County Public Schools,
School Boundaries, 2023.

- Note:
1. Based on SY 2023-24 boundaries.
 2. Thomas Jefferson HS has countywide boundaries.



Applicable Policies and Regulations

Boundary/Program Change	Applicable Policy/Regulation
Program Change less than 15% enrollment of each school	Regulation 3333
Program Change greater than 15% enrollment of each school	Policy & Regulation 8130
Boundary Changes (any percent)	Policy & Regulation 8130