

# COVID-19: summary of persons being monitored, persons tested, and cases

Data through Jul 14, 2020 verified as of Jul 15, 2020 at 09:25 AM  
Data in this report are provisional and subject to change.

Monitored persons: people the Florida Department of Health was notified of for possible monitoring because they are a contact of a case, traveled from China, or were identified by the Centers for Disease Control and Prevention (CDC) as a part of a airline/ship contact investigation	
Total reports	101,519
Total persons of high, medium, or unknown risk	97,833
High/medium/unknown risk still being monitored	15,123

Persons tested: includes PCR and antigen test results received by the Department of Health from the state public health laboratory (BPHL), as well as commercial and hospital laboratories	
Total tested	2,739,169
Positive	301,810
Negative	2,434,143
Inconclusive	3,216
Awaiting testing	2,189

Cases: people with positive PCR or antigen test result	
Total cases	301,810
Florida residents	297,876
Non-Florida residents	3,934
Type of testing	
Florida residents	297,876
Positive by BPHL/CDC	10,378
Positive by commercial/hospital lab	287,498
Non-Florida residents	
Positive by BPHL/CDC	170
Positive by commercial/hospital lab	3,764
Characteristics	
Florida residents hospitalized	19,334
Florida resident deaths	4,521
Change in deaths since previous report	+112
Non-Florida resident deaths	105
Hospitalized counts include anyone who was hospitalized at some point during their illness. It does not reflect the number of people currently hospitalized.	
More information on deaths identified through death certificate data is available on the National Center for Health Statistics website at <a href="http://www.cdc.gov/nchs/nvss/vsrr/COVID19/index.htm">www.cdc.gov/nchs/nvss/vsrr/COVID19/index.htm</a> .	
Risk factors for Florida residents	
Traveled	2,968
Contact with a known case	80,534
Traveled and contact with a known case	2,889
Neither	211,485
No travel and no contact	30,030
Travel is unknown	150,555
Contact is unknown	46,219
Contact is pending	131,939
Travel can be unknown and contact can be unknown or pending for the same case, these numbers will sum to more than the "neither" total.	

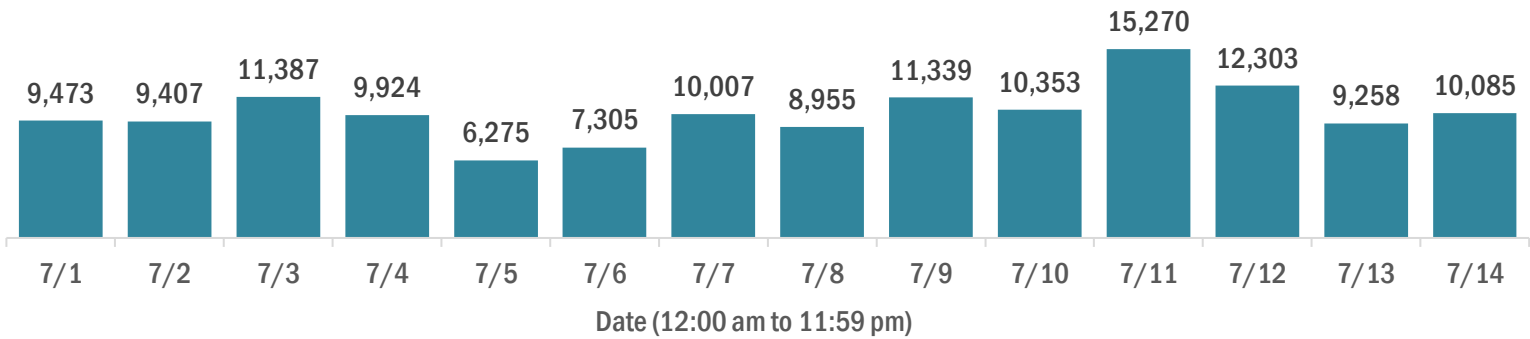
# COVID-19: cases and laboratory testing over time

Data through Jul 14, 2020 verified as of Jul 15, 2020 at 09:25 AM

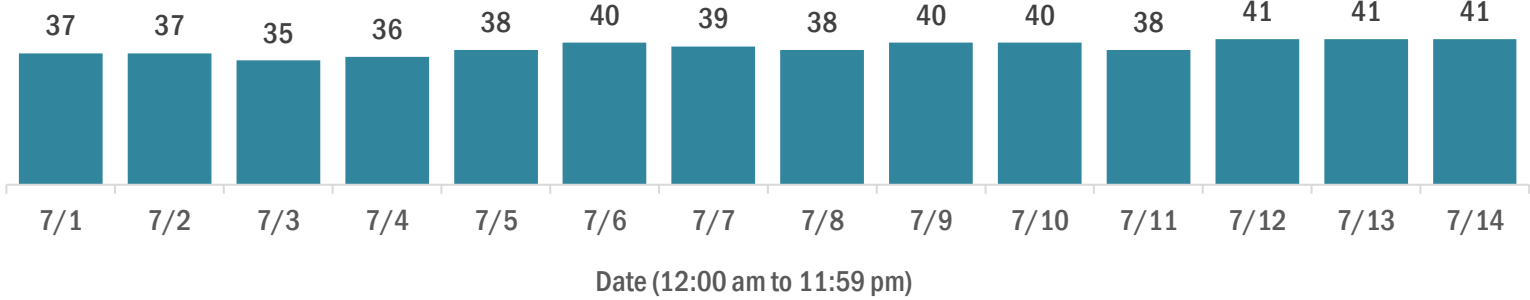
Data in this report are provisional and subject to change.

## Cases in Florida residents per day for the past 2 weeks

### Number of cases per day



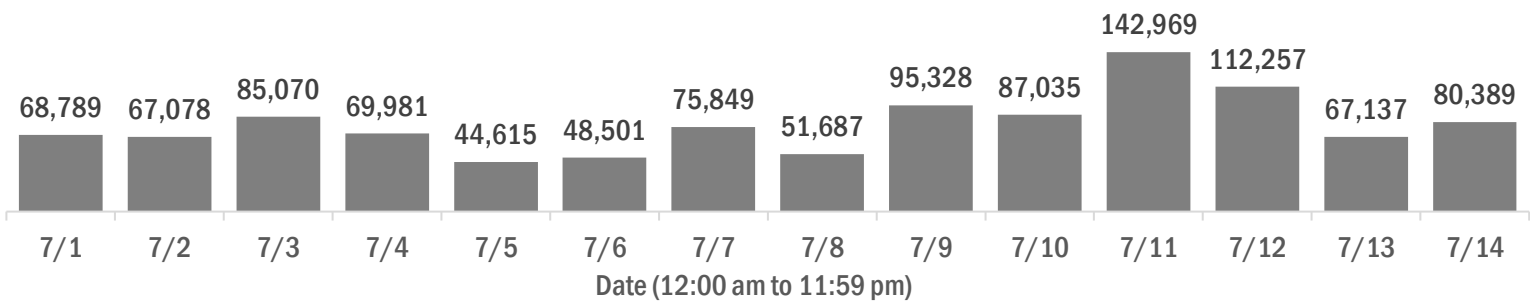
### Median age of cases by day



## Laboratory testing for Florida residents and non-Florida residents over the past 2 weeks

### Number of people tested per day

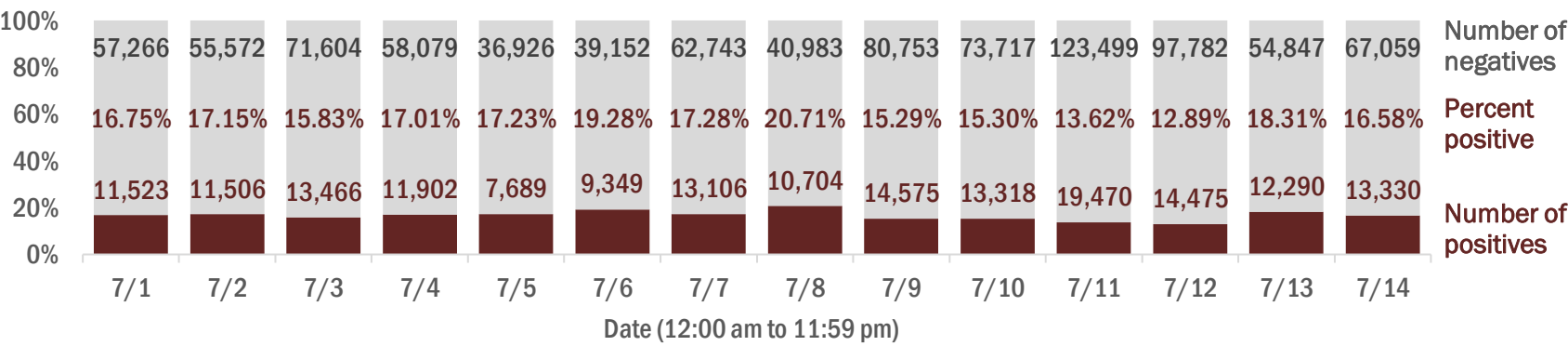
These counts include the number of people for whom the department received PCR or antigen laboratory results by day. People tested on multiple days will be included for each day a new result was received. A person is only counted once for each day they are tested, regardless of whether multiple specimens are tested or multiple results are received.



### Number and percent of positive labs

The percent of positive results ranged from 12.89% to 20.71% over the past 2 weeks and was 16.58% yesterday.

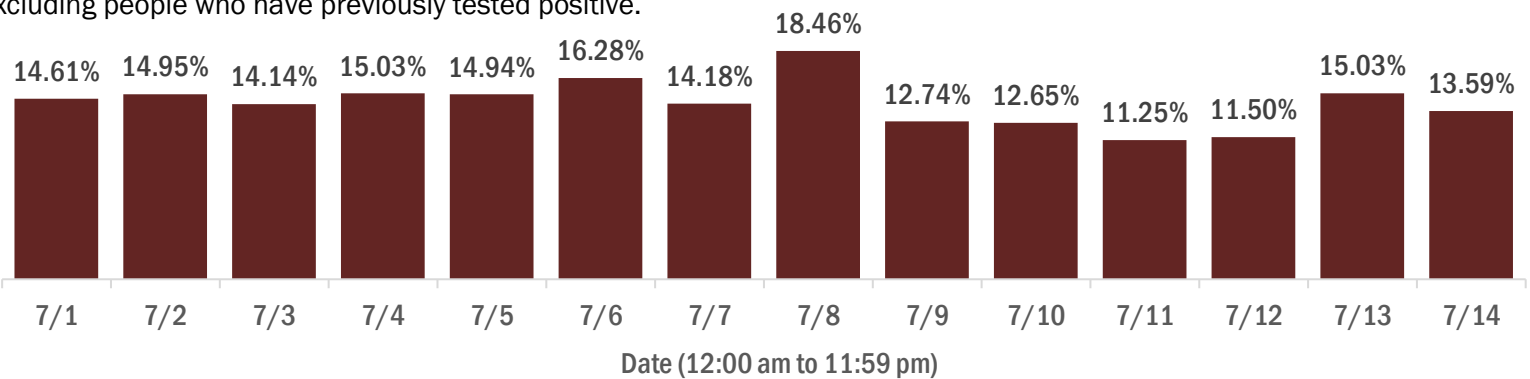
These counts include the number of people for whom the department received PCR or antigen laboratory results by day. People tested on multiple days will be included for each day a new result was received. A person is only counted once for each day they are tested, regardless of whether multiple specimens are tested or multiple results are received. If a person has a positive specimen and a negative specimen in the same day, only the positive result is counted.



### Percent positivity for new cases

The percent of positive results ranged from 11.25% to 18.46% over the past 2 weeks and was 13.59% yesterday.

This percent is the number of people who test PCR- or antigen-positive for the first time divided by all the people tested that day, excluding people who have previously tested positive.



# COVID-19: characteristics of 297,876 Florida resident cases

Data through Jul 14, 2020 verified as of Jul 15, 2020 at 09:25 AM

Data in this report are provisional and subject to change.

Age group	Cases		Hospitalizations		Deaths	
0-4 years	4,735	2%	95	0%	0	0%
5-14 years	10,279	3%	73	0%	2	0%
15-24 years	47,751	16%	478	2%	12	0%
25-34 years	61,158	21%	1,215	6%	27	1%
35-44 years	48,792	16%	1,809	9%	96	2%
45-54 years	46,331	16%	2,588	13%	192	4%
55-64 years	36,932	12%	3,398	18%	435	10%
65-74 years	21,405	7%	3,702	19%	920	20%
75-84 years	12,448	4%	3,391	18%	1,265	28%
85+ years	7,456	3%	2,585	13%	1,572	35%
Unknown	589	0%	0	0%	0	0%
Total	297,876		19,334		4,521	

Gender	Cases	
Female	151,362	50%
Male	144,610	49%
Unknown	1,904	1%
Total	297,876	

Ethnicity	Cases		Hospitalizations		Deaths	
Hispanic	76,269	26%	6,460	33%	1,164	26%
Non-Hispanic	97,951	33%	11,745	61%	3,015	67%
Unknown	123,656	42%	1,129	6%	342	8%
Total	297,876		19,334		4,521	

Race and ethnicity	Cases		Hospitalizations		Deaths	
White	115,592	39%	11,590	60%	3,074	68%
Hispanic	52,488	18%	4,731	24%	939	21%
Non-Hispanic	52,239	18%	6,459	33%	1,993	44%
Unknown	10,865	4%	400	2%	142	3%
Black	44,852	15%	4,959	26%	938	21%
Hispanic	2,091	1%	252	1%	30	1%
Non-Hispanic	37,192	12%	4,582	24%	879	19%
Unknown	5,569	2%	125	1%	29	1%
Other race	24,923	8%	2,114	11%	326	7%
Hispanic	14,141	5%	1,342	7%	172	4%
Non-Hispanic	6,405	2%	655	3%	127	3%
Unknown	4,377	1%	117	1%	27	1%
Unknown race	112,509	38%	671	3%	183	4%
Hispanic	7,549	3%	135	1%	23	1%
Non-Hispanic	2,115	1%	49	0%	16	0%
Unknown	102,845	35%	487	3%	144	3%
Total	297,876		19,334		4,521	

**Hospitalization** counts include anyone who was hospitalized at some point during their illness. It does not reflect the number of people currently hospitalized. **Other race** includes any person with a race of American Indian/Alaskan native, Asian, native Hawaiian/Pacific Islander, or other.

# COVID-19: deaths in Florida residents and staff of long-term care facilities

Data through Jul 14, 2020 verified as of Jul 15, 2020 at 09:25 AM

Data in this report are provisional and subject to change.

For current cases in residents or staff of long-term care facilities, please visit: <https://floridahealthcovid19.gov/>

County	Deaths	
Dade	563	26%
Palm Beach	264	12%
Pinellas	197	9%
Broward	169	8%
Lee	132	6%
Hillsborough	115	5%
Manatee	90	4%
Polk	87	4%
Sarasota	65	3%
Charlotte	50	2%
Volusia	50	2%
Collier	43	2%
Duval	42	2%
St. Lucie	40	2%
Escambia	39	2%
Clay	26	1%
Martin	21	1%
Suwannee	21	1%
Hendry	18	1%
Pasco	17	1%
Seminole	13	1%
Indian River	12	1%

County	Deaths	
Washington	12	1%
Brevard	11	1%
Alachua	10	0%
Orange	10	0%
Osceola	10	0%
Walton	9	0%
Lake	7	0%
Calhoun	6	0%
Gadsden	5	0%
Jefferson	4	0%
Leon	4	0%
Marion	4	0%
Okaloosa	4	0%
Baker	3	0%
Hernando	3	0%
Jackson	3	0%
Madison	3	0%
Putnam	3	0%
Bradford	2	0%
Citrus	1	0%
Columbia	1	0%
Desoto	1	0%

County	Deaths	
Hardee	1	0%
Holmes	1	0%
Levy	1	0%
Monroe	1	0%
Nassau	1	0%
Okeechobee	1	0%
St. Johns	1	0%
Sumter	1	0%
Total	2,198	

**Note:** cases are summarized by the county of usual residence. Residents and staff may be cases associated with facilities that are not in their county of usual residence, resulting in cases being included below for counties that do not have facilities with known cases.

# COVID-19: characteristics of 301,810 cases

Data through Jul 14, 2020 verified as of Jul 15, 2020 at 09:25 AM

Data in this report are provisional and subject to change.

Tables below include cases in Florida residents and non-Florida residents.

All 67 Florida counties have cases:

County	FL resident			Non-FL resident	Total
Dade	71,631	<div></div>	24%	686	72,317
Broward	33,763	<div></div>	11%	390	34,153
Palm Beach	22,562	<div></div>	8%	226	22,788
Hillsborough	20,909	<div></div>	7%	109	21,018
Orange	19,590	<div></div>	7%	319	19,909
Duval	13,987	<div></div>	5%	165	14,152
Pinellas	11,992	<div></div>	4%	88	12,080
Lee	10,651	<div></div>	4%	198	10,849
Polk	8,176	<div></div>	3%	30	8,206
Collier	6,775	<div></div>	2%	97	6,872
Manatee	5,512	<div></div>	2%	52	5,564
Osceola	4,677	<div></div>	2%	74	4,751
Escambia	4,137	<div></div>	1%	608	4,745
Seminole	4,648	<div></div>	2%	17	4,665
Pasco	4,340	<div></div>	1%	23	4,363
Volusia	4,321	<div></div>	1%	34	4,355
Brevard	3,704	<div></div>	1%	18	3,722
Sarasota	3,407	<div></div>	1%	40	3,447
St. Lucie	3,193	<div></div>	1%	16	3,209
Martin	2,917	<div></div>	1%	18	2,935
Lake	2,859	<div></div>	1%	23	2,882
Leon	2,548	<div></div>	1%	58	2,606
Alachua	2,284	<div></div>	1%	38	2,322
St. Johns	2,053	<div></div>	1%	26	2,079
Marion	1,932	<div></div>	1%	6	1,938
Clay	1,636	<div></div>	1%	5	1,641
Okaloosa	1,511	<div></div>	1%	21	1,532
Bay	1,480	<div></div>	0%	43	1,523
Santa Rosa	1,513	<div></div>	1%	10	1,523
Indian River	1,374	<div></div>	0%	12	1,386
Hendry	1,288	<div></div>	0%		1,288
Charlotte	1,275	<div></div>	0%	6	1,281
Desoto	997	<div></div>	0%		997
Hernando	976	<div></div>	0%	11	987
Columbia	924	<div></div>	0%	5	929

County	FL resident			Non-FL resident	Total
Putnam	855	<div></div>	0%		855
Suwannee	771	<div></div>	0%	17	788
Sumter	714	<div></div>	0%	7	721
Gadsden	681	<div></div>	0%	6	687
Jackson	664	<div></div>	0%	11	675
Monroe	651	<div></div>	0%	19	670
Citrus	664	<div></div>	0%	1	665
Walton	589	<div></div>	0%	60	649
Hardee	627	<div></div>	0%	6	633
Highlands	624	<div></div>	0%	3	627
Nassau	577	<div></div>	0%	23	600
Okeechobee	583	<div></div>	0%	3	586
Flagler	548	<div></div>	0%	9	557
Hamilton	441	<div></div>	0%	3	444
Madison	396	<div></div>	0%	6	402
Unknown	71	<div></div>	0%	261	332
Levy	293	<div></div>	0%	3	296
Liberty	281	<div></div>	0%		281
Holmes	253	<div></div>	0%	5	258
Washington	209	<div></div>	0%	5	214
Glades	213	<div></div>	0%		213
Wakulla	203	<div></div>	0%	3	206
Baker	187	<div></div>	0%		187
Calhoun	184	<div></div>	0%		184
Gilchrist	169	<div></div>	0%		169
Bradford	161	<div></div>	0%		161
Taylor	156	<div></div>	0%	2	158
Dixie	135	<div></div>	0%		135
Union	123	<div></div>	0%		123
Gulf	104	<div></div>	0%	5	109
Jefferson	97	<div></div>	0%	3	100
Lafayette	64	<div></div>	0%		64
Franklin	46	<div></div>	0%	1	47
Total	297,876			3,934	301,810

# COVID-19: characteristics of 297,876 Florida resident cases

Data through Jul 14, 2020 verified as of Jul 15, 2020 at 09:25 AM

Data in this report are provisional and subject to change.

The table below includes the cities and counties of residence for cases in Florida residents based on the patient's ZIP Code.

Note that city is not always received as part of the initial notification and may be missing while the case is being investigated.

City and county	Cases
Miami, Dade	44,361
Orlando, Orange	14,851
Tampa, Hillsborough	12,965
Jacksonville, Duval	12,952
Hialeah, Dade	10,108
Fort Lauderdale, Broward	7,889
Hollywood, Broward	6,820
West Palm Beach, Palm Beach	5,447
Saint Petersburg, Pinellas	5,237
Homestead, Dade	4,998
Fort Myers, Lee	4,579
Naples, Collier	4,547
Pompano Beach, Broward	4,055
Kissimmee, Osceola	3,811
Bradenton, Manatee	3,780
Pensacola, Escambia	3,632
Lake Worth, Palm Beach	3,162
Boca Raton, Palm Beach	2,780
Sarasota, Sarasota	2,560
Lakeland, Polk	2,529
Tallahassee, Leon	2,506
Cape Coral, Lee	2,284
Clearwater, Pinellas	2,273
Lehigh Acres, Lee	2,143
Miami Beach, Dade	2,077
Miramar, Broward	2,052
Boynton Beach, Palm Beach	2,012
Port Saint Lucie, St. Lucie	1,966
Miami Gardens, Dade	1,930
Gainesville, Alachua	1,905
Immokalee, Collier	1,797
Winter Haven, Polk	1,729
Opa Locka, Dade	1,519
Delray Beach, Palm Beach	1,506
Stuart, Martin	1,472
Brandon, Hillsborough	1,441
Ocala, Marion	1,368
Coral Springs, Broward	1,318
Riverview, Hillsborough	1,256
Largo, Pinellas	1,234
Missing, Broward	1,161
Plant City, Hillsborough	1,153
Fort Pierce, St. Lucie	1,137
Jupiter, Palm Beach	1,134
Apopka, Orange	1,131
Lake Worth Beach, Palm Beach	1,119
Melbourne, Brevard	1,111
Sunrise, Broward	1,092
North Miami Beach, Dade	1,087
Davie, Broward	1,082
Sanford, Seminole	1,041
New Port Richey, Pasco	1,027
Deerfield Beach, Broward	1,011
Panama City, Bay	1,008
Saint Augustine, St. Johns	987
Doral, Dade	986
Daytona Beach, Volusia	919
Vero Beach, Indian River	899
Arcadia, Desoto	880



# COVID-19: characteristics of 297,876 Florida resident cases

Data through Jul 14, 2020 verified as of Jul 15, 2020 at 09:25 AM

Data in this report are provisional and subject to change.

The table below includes the cities and counties of residence for cases in Florida residents based on the patient's ZIP Code.

Note that city is not always received as part of the initial notification and may be missing while the case is being investigated.

City and county	Cases
Lake City, Columbia	878
Tamarac, Broward	852
Palmetto, Manatee	850
Winter Park, Orange	842
Plantation, Broward	831
Royal Palm Beach, Palm Beach	831
Indiantown, Martin	826
Deltona, Volusia	804
Orange Park, Clay	802
Altamonte Springs, Seminole	758
Oviedo, Seminole	749
Winter Garden, Orange	748
Palm Bay, Brevard	748
Bonita Springs, Lee	738
Clermont, Lake	732
Deland, Volusia	732
Palm Beach Gardens, Palm Beach	725
North Miami, Dade	724
Saint Cloud, Osceola	717
Margate, Broward	691
Land O Lakes, Pasco	688
Hallandale, Broward	679
Clewiston, Hendry	666
Port Charlotte, Charlotte	662
Florida City, Dade	661
Live Oak, Suwannee	661
Belle Glade, Palm Beach	658
Palm Harbor, Pinellas	648
Ocoee, Orange	647
Wesley Chapel, Pasco	639
Davenport, Polk	637
Milton, Santa Rosa	628
Coral Gables, Dade	610
Coconut Creek, Broward	609
North Lauderdale, Broward	606
Seminole, Pinellas	603
Wellington, Palm Beach	584
Haines City, Polk	581
Okeechobee, Okeechobee	580
Pinellas Park, Pinellas	575
Ruskin, Hillsborough	572
Spring Hill, Hernando	571
Longwood, Seminole	559
Lutz, Hillsborough	559
Weston, Broward	554
Oakland Park, Broward	547
Valrico, Hillsborough	540
Fort Walton Beach, Okaloosa	539
Windermere, Orange	519
Casselberry, Seminole	512
Jacksonville Beach, Duval	498
Wimauma, Hillsborough	476
Pembroke Pines, Broward	474
Labelle, Hendry	456
Punta Gorda, Charlotte	453
Quincy, Gadsden	446
Palatka, Putnam	438
Lake Mary, Seminole	434
Cocoa, Brevard	433

# COVID-19: characteristics of 297,876 Florida resident cases

Data through Jul 14, 2020 verified as of Jul 15, 2020 at 09:25 AM

Data in this report are provisional and subject to change.

The table below includes the cities and counties of residence for cases in Florida residents based on the patient's ZIP Code.

Note that city is not always received as part of the initial notification and may be missing while the case is being investigated.

City and county	Cases
Missing, Palm Beach	424
Aventura, Dade	423
Tavares, Lake	421
Palm Coast, Flagler	408
Leesburg, Lake	388
Miami Lakes, Dade	388
Bartow, Polk	377
Winter Springs, Seminole	375
Ormond Beach, Volusia	369
Zephyrhills, Pasco	368
Maitland, Orange	368
North Fort Myers, Lee	358
Loxahatchee, Palm Beach	354
Tarpon Springs, Pinellas	351
Missing, Dade	348
North Port, Sarasota	347
Seffner, Hillsborough	343
Port Richey, Pasco	342
Auburndale, Polk	340
Jasper, Hamilton	337
Middleburg, Clay	336
Ponte Vedra Beach, St. Johns	334
South Miami, Dade	333
Kissimmee, Polk	330
Cantonment, Escambia	325
Pahokee, Palm Beach	315
Dade City, Pasco	311
Hudson, Pasco	307
Crestview, Okaloosa	305
Lake Wales, Polk	304
Wauchula, Hardee	301
South Bay, Palm Beach	301
Brooksville, Hernando	301
Dunedin, Pinellas	297
Missing, Collier	297
Gulf Breeze, Santa Rosa	296
Riviera Beach, Palm Beach	292
Holiday, Pasco	291
Mulberry, Polk	288
Orange City, Volusia	284
Port Orange, Volusia	279
Fellsmere, Indian River	271
Venice, Sarasota	267
Sebring, Highlands	264
Key West, Monroe	263
Merritt Island, Brevard	261
The Villages, Sumter	260
Saint Johns, St. Johns	260
Navarre, Santa Rosa	257
Dover, Hillsborough	255
Eustis, Lake	255
Bristol, Liberty	254
Cooper City, Broward	254
Fernandina Beach, Nassau	253
Polk City, Polk	251
Sarasota, Manatee	251
Lantana, Palm Beach	250
Madison, Madison	250
Dania, Broward	249



# COVID-19: characteristics of 297,876 Florida resident cases

Data through Jul 14, 2020 verified as of Jul 15, 2020 at 09:25 AM

Data in this report are provisional and subject to change.

The table below includes the cities and counties of residence for cases in Florida residents based on the patient's ZIP Code.

Note that city is not always received as part of the initial notification and may be missing while the case is being investigated.

City and county	Cases
Missing, Hillsborough	246
Palm City, Martin	243
Odessa, Hillsborough	241
Estero, Lee	241
Titusville, Brevard	237
Green Cove Springs, Clay	235
Defuniak Springs, Walton	234
Marianna, Jackson	232
Destin, Okaloosa	228
Bonifay, Holmes	227
Parrish, Manatee	226
Atlantic Beach, Duval	221
Panama City Beach, Bay	219
Pinecrest, Dade	213
Lauderhill, Broward	212
Avon Park, Highlands	211
Rockledge, Brevard	210
Gibsonton, Hillsborough	207
Crescent City, Putnam	205
Fleming Island, Clay	202
Groveland, Lake	196
Lauderdale Lakes, Broward	196
Moore Haven, Glades	196
Mount Dora, Lake	196
Debary, Volusia	192
New Smyrna Beach, Volusia	189
Wilton Manors, Broward	189
Oldsmar, Pinellas	186
Santa Rosa Beach, Walton	186
Hobe Sound, Martin	186
Sneads, Jackson	185
Missing, Orange	184
Key Biscayne, Dade	180
Crawfordville, Wakulla	177
Frostproof, Polk	176
Missing, Duval	176
Inverness, Citrus	176
Parkland, Broward	176
Apollo Beach, Hillsborough	171
Niceville, Okaloosa	169
Ponte Vedra, St. Johns	167
Missing, Pasco	165
Bushnell, Sumter	163
Lynn Haven, Bay	159
Safety Harbor, Pinellas	159
Ellenton, Manatee	158
Fort Meade, Polk	157
Palm Springs, Palm Beach	157
Lithia, Hillsborough	155
Sun City Center, Hillsborough	153
Pace, Santa Rosa	149
North Palm Beach, Palm Beach	145
Chipley, Washington	141
Sebastian, Indian River	136
Missing, Hendry	134
Alachua, Alachua	131
Bowling Green, Hardee	131
Summerfield, Marion	130
Perry, Taylor	129

# COVID-19: characteristics of 297,876 Florida resident cases

Data through Jul 14, 2020 verified as of Jul 15, 2020 at 09:25 AM

Data in this report are provisional and subject to change.

The table below includes the cities and counties of residence for cases in Florida residents based on the patient's ZIP Code.

Note that city is not always received as part of the initial notification and may be missing while the case is being investigated.

City and county	Cases
Yulee, Nassau	127
Missing, St. Johns	125
Missing, Polk	125
Missing, Santa Rosa	124
Macclenny, Baker	123
Missing, Hardee	119
Chiefland, Levy	118
Jensen Beach, Martin	116
Jacksonville, St. Johns	115
Bellevue, Marion	113
Trenton, Gilchrist	113
Starke, Bradford	113
Cocoa Beach, Brevard	111
Missing, Lee	111
Crystal River, Citrus	110
Mascotte, Lake	109
Blountstown, Calhoun	109
Neptune Beach, Duval	109
Palmetto Bay, Dade	109
Key Largo, Monroe	107
Missing, Marion	106
Missing, Citrus	104
Satellite Beach, Brevard	98
Missing, Desoto	98
Thonotosassa, Hillsborough	96
Wildwood, Sumter	94
Lake Alfred, Polk	93
Myakka City, Manatee	93
Edgewater, Volusia	92
Callahan, Nassau	92
Missing, Madison	92
Shalimar, Okaloosa	92
Clearwater Beach, Pinellas	91
Newberry, Alachua	89
Lady Lake, Lake	89
Holly Hill, Volusia	89
Missing, Osceola	85
Carol City, Dade	85
Jennings, Hamilton	85
Missing, Brevard	85
Englewood, Charlotte	84
Dunnellon, Marion	84
Mary Esther, Okaloosa	83
Missing, St. Lucie	83
Minneola, Lake	81
Pierson, Volusia	81
Lake Placid, Highlands	80
Old Town, Dixie	80
Missing, Volusia	78
Marathon, Monroe	77
Homosassa, Citrus	77
Williston, Levy	77
Monticello, Jefferson	76
Spring Hill, Pasco	76
Nokomis, Sarasota	75
West Melbourne, Brevard	75
Havana, Gadsden	72
Sorrento, Lake	71
Tavernier, Monroe	69

# COVID-19: characteristics of 297,876 Florida resident cases

Data through Jul 14, 2020 verified as of Jul 15, 2020 at 09:25 AM

Data in this report are provisional and subject to change.

The table below includes the cities and counties of residence for cases in Florida residents based on the patient's ZIP Code.

Note that city is not always received as part of the initial notification and may be missing while the case is being investigated.

City and county	Cases
Southwest Ranches, Broward	69
Missing, Martin	69
Medley, Dade	67
De Leon Springs, Volusia	67
Zolfo Springs, Hardee	67
Lake Park, Palm Beach	66
Gulfport, Pinellas	66
Avon Park, Polk	66
Missing, Jackson	66
Missing, Indian River	64
Lake Butler, Union	63
Indialantic, Brevard	63
Palm Beach, Palm Beach	62
Tequesta, Palm Beach	61
Gotha, Orange	60
Freeport, Walton	60
Missing, Sarasota	60
Missing, Highlands	59
Hilliard, Nassau	59
Missing, Hernando	59
Molino, Escambia	58
Trinity, Pasco	58
Alva, Lee	58
Bunnell, Flagler	58
Marco Island, Collier	58
Missing, Seminole	57
Englewood, Sarasota	57
Mayo, Lafayette	57
Geneva, Seminole	56
Port Saint Joe, Gulf	55
Chuluota, Seminole	55
Montverde, Lake	53
Miramar Beach, Walton	53
Jay, Santa Rosa	52
Graceville, Jackson	52
Ave Maria, Collier	52
Rotunda West, Charlotte	51
Flagler Beach, Flagler	51
Midway, Gadsden	50
Beverly Hills, Citrus	50
Missing, Escambia	49
Cape Canaveral, Brevard	49
Fort Myers Beach, Lee	47
Missing, Pinellas	47
Bronson, Levy	46
Fruitland Park, Lake	46
Missing, Monroe	46
Kenneth City, Pinellas	45
East Palatka, Putnam	45
Cross City, Dixie	45
Umatilla, Lake	44
Eagle Lake, Polk	44
South Daytona, Volusia	43
Bell, Gilchrist	43
Oxford, Sumter	43
Fort White, Columbia	43
West Miami, Dade	42
Mims, Brevard	42
Altha, Calhoun	42

# COVID-19: characteristics of 297,876 Florida resident cases

Data through Jul 14, 2020 verified as of Jul 15, 2020 at 09:25 AM

Data in this report are provisional and subject to change.

The table below includes the cities and counties of residence for cases in Florida residents based on the patient's ZIP Code.

Note that city is not always received as part of the initial notification and may be missing while the case is being investigated.

City and county	Cases
Archer, Alachua	42
Missing, Manatee	42
High Springs, Alachua	42
Hernando, Citrus	41
Oakland, Orange	41
Chattahoochee, Gadsden	40
Greenwood, Jackson	39
Missing, Lake	39
Belle Isle, Orange	38
Indian Rocks Beach, Pinellas	38
Weeki Wachee, Hernando	38
Seville, Volusia	38
Interlachen, Putnam	37
Melbourne Beach, Brevard	36
Zellwood, Orange	36
Keystone Heights, Clay	36
Lecanto, Citrus	36
Lakewood Ranch, Manatee	35
Islamorada, Monroe	35
South Pasadena, Pinellas	35
O Brien, Suwannee	35
Greenacres, Palm Beach	35
Raiford, Union	35
Hastings, St. Johns	34
Lake Panasoffkee, Sumter	33
El Portal, Dade	33
Coconut Grove, Dade	32
Missing, Nassau	32
Wewahitchka, Gulf	32
Century, Escambia	31
Dundee, Polk	31
Viera, Brevard	31
Gretna, Gadsden	31
Bal Harbour, Dade	31
Vernon, Washington	30
Osprey, Sarasota	30
Citra, Marion	30
Pomona Park, Putnam	30
Dunnellon, Citrus	30
Missing, Flagler	30
Greenville, Madison	29
Sanibel, Lee	29
Missing, Unknown	29
Satsuma, Putnam	29
Biscayne Park, Dade	29
Indian Harbour Beach, Brevard	28
Webster, Sumter	28
Surfside, Dade	28
Lawtey, Bradford	28
Southport, Bay	28
Missing, Gadsden	28
Center Hill, Sumter	27
Branford, Suwannee	27
Baker, Okaloosa	27
Cottondale, Jackson	26
Cutler Bay, Dade	26
Grand Island, Lake	26
Glen Saint Mary, Baker	25
Hawthorne, Alachua	25

# COVID-19: characteristics of 297,876 Florida resident cases

Data through Jul 14, 2020 verified as of Jul 15, 2020 at 09:25 AM

Data in this report are provisional and subject to change.

The table below includes the cities and counties of residence for cases in Florida residents based on the patient's ZIP Code.

Note that city is not always received as part of the initial notification and may be missing while the case is being investigated.

City and county	Cases
San Antonio, Pasco	25
Missing, Levy	24
Silver Springs, Marion	24
Christmas, Orange	24
Missing, Leon	24
Celebration, Osceola	23
Lauderdale By The Sea, Broward	23
Missing, Okaloosa	23
Canal Point, Palm Beach	23
Hallandale Beach, Broward	23
Sanderson, Baker	23
Melrose, Putnam	22
Malabar, Brevard	22
Citrus Springs, Citrus	22
Ocklawaha, Marion	22
Felda, Hendry	22
Florida Dept Of Corrections, Union	22
Lake Hamilton, Polk	22
Elkton, St. Johns	22
Missing, Walton	21
Coleman, Sumter	21
Grand Ridge, Jackson	21
Missing, Washington	21
Mcalpin, Suwannee	21
Hypoluxo, Palm Beach	20
Fern Park, Seminole	20
Juno Beach, Palm Beach	20
Youngstown, Bay	20
Missing, Clay	20
Poinciana, Polk	20
Lake Helen, Volusia	20
Apalachicola, Franklin	20
Howey-In-The-Hills, Lake	19
Inlet Beach, Walton	19
Missing, Calhoun	19
Sunny Isles Beach, Dade	19
Lee, Madison	19
Missing, Sumter	18
Madeira Beach, Pinellas	18
Babson Park, Polk	18
Princeton, Dade	18
Osteen, Volusia	18
Patrick Air Force Base, Brevard	18
Miami Springs, Dade	17
Ochopee, Collier	17
Atlantis, Palm Beach	17
Malone, Jackson	17
Reddick, Marion	17
White Springs, Hamilton	17
Mcdavid, Escambia	17
Bokeelia, Lee	17
Missing, Gulf	17
Big Pine Key, Monroe	17
Astor, Lake	17
Naranja, Dade	16
Hosford, Liberty	16
Belleair, Pinellas	16
Temple Terrace, Hillsborough	16
The Villages, Lake	16

# COVID-19: characteristics of 297,876 Florida resident cases

Data through Jul 14, 2020 verified as of Jul 15, 2020 at 09:25 AM

Data in this report are provisional and subject to change.

The table below includes the cities and counties of residence for cases in Florida residents based on the patient's ZIP Code.

Note that city is not always received as part of the initial notification and may be missing while the case is being investigated.

City and county	Cases
Belleair Beach, Pinellas	16
Steinhatchee, Taylor	16
Unknown, Orange	15
Missing, Baker	15
Morriston, Levy	15
Hialeah Gardens, Dade	15
Lady Lake, Sumter	15
Alford, Jackson	15
Stock Island, Monroe	15
Bradenton Beach, Manatee	15
Floral City, Citrus	15
Grant-Valkaria, Brevard	15
Crystal Beach, Pinellas	14
Laurel Hill, Okaloosa	14
Missing, Bay	14
Micanopy, Alachua	14
North Bay Village, Dade	14
Missing, Jefferson	14
Greensboro, Gadsden	14
Kendall, Dade	13
Eastpoint, Franklin	13
Florida State University, Leon	13
Carrollwood, Hillsborough	13
Astatula, Lake	13
Sweetwater, Dade	13
Yalaha, Lake	13
Missing, Holmes	13
Saint James City, Lee	13
Bryceville, Nassau	13
Weirsdale, Marion	13
Eglin Air Force Base, Okaloosa	12
Sumterville, Sumter	12
Missing, Gilchrist	12
Odessa, Pasco	12
Wellborn, Suwannee	12
Anthony, Marion	12
Alafaya, Orange	12
San Mateo, Putnam	12
Okahumpka, Lake	11
Miami Shores, Dade	11
Edgewood, Orange	11
Fountain, Bay	11
Missing, Liberty	11
Singer Island, Palm Beach	11
Kissimmee, Orange	11
Lighthouse Point, Broward	11
Placida, Charlotte	11
Holmes Beach, Manatee	11
Valparaiso, Okaloosa	11
Haverhill, Palm Beach	11
Village Of Palmetto Bay, Dade	11
Longboat Key, Manatee	11
Paisley, Lake	11
Summerland Key, Monroe	11
Missing, Suwannee	10
Baldwin, Duval	10
West Park, Broward	10
Heathrow, Seminole	10
Hollister, Putnam	10



# COVID-19: characteristics of 297,876 Florida resident cases

Data through Jul 14, 2020 verified as of Jul 15, 2020 at 09:25 AM

Data in this report are provisional and subject to change.

The table below includes the cities and counties of residence for cases in Florida residents based on the patient's ZIP Code.

Note that city is not always received as part of the initial notification and may be missing while the case is being investigated.

City and county	Cases
Fort Denaud, Hendry	10
Nocatee, Desoto	10
Carrabelle, Franklin	10
Golden Beach, Dade	10
Waverly, Polk	10
Missing, Charlotte	10
Missing, Wakulla	10
Oak Hill, Volusia	9
Barefoot Bay, Brevard	9
Caryville, Washington	9
Callaway, Bay	9
Waldo, Alachua	9
Ona, Hardee	9
Lake Suzy, Desoto	9
Balm, Hillsborough	8
Goulds, Dade	8
Sun City, Hillsborough	8
Bay Harbor Islands, Dade	8
Kindred, Osceola	8
Missing, Glades	8
Ponce Inlet, Volusia	8
Clarksville, Calhoun	8
Sopchoppy, Wakulla	8
Tierra Verde, Pinellas	8
Bellview, Escambia	8
Fruit Cove, St. Johns	8
Florahome, Putnam	7
Matlacha, Lee	7
Winter Park, Seminole	7
Reunion, Osceola	7
Lamont, Jefferson	7
Tice, Lee	7
Welaka, Putnam	7
Altoona, Lake	7
Dania Beach, Broward	7
Treasure Island, Pinellas	7
Westville, Holmes	7
Bayonet Point, Pasco	7
Missing, Bradford	7
Mangonia Park, Palm Beach	7
Bascom, Jackson	7
Santa Fe, Alachua	7
Terra Ceia, Manatee	6
Georgetown, Putnam	6
Holt, Okaloosa	6
Missing, Alachua	6
Harmony, Osceola	6
Tioga, Alachua	6
Venus, Highlands	6
Inglis, Levy	6
Walnut Hill, Escambia	6
Missing, Dixie	6
North Redington Beach, Pinellas	6
Sydney, Hillsborough	6
Lutz, Pasco	6
Pinetta, Madison	6
Sebastian, Brevard	6
Kathleen, Polk	6
Pensacola Beach, Santa Rosa	6

# COVID-19: characteristics of 297,876 Florida resident cases

Data through Jul 14, 2020 verified as of Jul 15, 2020 at 09:25 AM

Data in this report are provisional and subject to change.

The table below includes the cities and counties of residence for cases in Florida residents based on the patient's ZIP Code.

Note that city is not always received as part of the initial notification and may be missing while the case is being investigated.

City and county	Cases
Unknown, Dade	6
Hampton, Bradford	6
Labelle, Glades	6
Saint Pete Beach, Pinellas	5
Kinard, Calhoun	5
Brooker, Bradford	5
La Crosse, Alachua	5
Destin, Walton	5
Hiawassee, Orange	5
Eloise, Polk	5
Wahneta, Polk	5
Ocean Ridge, Palm Beach	5
Highland City, Polk	5
Missing, Lafayette	5
Buena Ventura Lakes, Osceola	5
Campbellton, Jackson	4
Kenansville, Osceola	4
Perdido Key, Escambia	4
Nichols, Polk	4
Nobleton, Hernando	4
Northdale, Hillsborough	4
West Delray Beach, Palm Beach	4
Lorida, Highlands	4
Indian Lake Estates, Polk	4
Key Colony Beach, Monroe	4
Poinciana, Osceola	4
Lehigh, Lee	4
Saint Marks, Wakulla	4
Tallevast, Manatee	4
Mango, Hillsborough	4
Fort Mccoy, Marion	4
Orlando, Seminole	4
Mayport, Duval	4
Miami, Unknown	4
Ridge Manor, Pasco	4
Siesta Key, Sarasota	4
Ponce De Leon, Walton	4
Tyndall Air Force Base, Bay	4
Homeland, Polk	4
Bay Pines, Pinellas	4
Cloud Lake, Palm Beach	4
Long Boat Key, Manatee	4
Missing, Taylor	4
Davenport, Osceola	3
Dinsmore, Duval	3
Ebro, Washington	3
Bonifay, Washington	3
Penney Farms, Clay	3
Palma Sola, Manatee	3
Palmdale, Glades	3
Plymouth, Orange	3
Azalea Park, Orange	3
East Lake, Marion	3
Cutler Ridge, Dade	3
Micco, Brevard	3
Lake Monroe, Seminole	3
Intercession City, Osceola	3
Captiva, Lee	3
Belleair Bluffs, Pinellas	3

# COVID-19: characteristics of 297,876 Florida resident cases

Data through Jul 14, 2020 verified as of Jul 15, 2020 at 09:25 AM

Data in this report are provisional and subject to change.

The table below includes the cities and counties of residence for cases in Florida residents based on the patient's ZIP Code.

Note that city is not always received as part of the initial notification and may be missing while the case is being investigated.

City and county	Cases
Fort Lauderdale, Unknown	3
Ferndale, Lake	3
Missing, Union	3
Pembroke Park, Broward	3
Palm Shores, Brevard	3
Shady Grove, Taylor	3
Graceville, Holmes	3
Jacksonville, Unknown	3
Candler, Marion	3
Bradley, Polk	3
Steinhatchee, Dixie	3
Ybor City, Hillsborough	3
Wabasso, Indian River	3
Lacoochee, Pasco	3
Enterprise, Volusia	3
Hernando Beach, Hernando	3
Centerville, Leon	3
Leisure City, Dade	3
Missing, Franklin	3
At Large, Broward	3
Altamonte Springs, Orange	3
Perrine, Dade	3
Ponce De Leon, Holmes	3
Port Saint John, Brevard	3
Oneco, Manatee	3
Westchase, Hillsborough	3
Mayport Naval Housing, Duval	3
Hollywood, Unknown	3
Miromar Lakes, Lee	3
Missing, Putnam	3
Mount Plymouth, Lake	3
Cedar Key, Levy	3
City Of Sunrise, Broward	3
Dowling Park, Suwannee	3
Braden River, Manatee	3
Gulf Stream, Palm Beach	3
Elfers, Pasco	3
Fpo, Duval	3
Eaton Park, Polk	2
Mulberry, Hillsborough	2
Union Park, Orange	2
Saint Leo, Pasco	2
Sand Lake, Orange	2
Pasadena, Pinellas	2
West Palm Beach, Unknown	2
Celebration, Orange	2
Goodland, Collier	2
Durant, Hillsborough	2
Miami, Martin	2
Lake Butler, Bradford	2
Gulf Breeze, Escambia	2
Ft Pierce, St. Lucie	2
Lamont, Taylor	2
Land O Lakes, Hillsborough	2
Maxville, Duval	2
Missing, Okeechobee	2
Unknown, Seminole	2
Sugarloaf, Monroe	2
San Carlos Park, Lee	2

# COVID-19: characteristics of 297,876 Florida resident cases

Data through Jul 14, 2020 verified as of Jul 15, 2020 at 09:25 AM

Data in this report are provisional and subject to change.

The table below includes the cities and counties of residence for cases in Florida residents based on the patient's ZIP Code.

Note that city is not always received as part of the initial notification and may be missing while the case is being investigated.

City and county	Cases
Rubonia, Manatee	2
Pompano Beach, Unknown	2
Longboat Key, Sarasota	2
Earleton, Alachua	2
Eatonville, Orange	2
Homosassa Springs, Citrus	2
Clewiston, Palm Beach	2
Aloma, Orange	2
Branford, Lafayette	2
Buckingham, Lee	2
Boca Grande, Lee	2
Inlet Beach, Bay	2
Hallandle Beach, Broward	2
Fisher Island, Dade	2
Sunny Hills, Washington	2
Tangerine, Orange	2
Pine Hills, Orange	2
North Venice, Sarasota	2
Archer, Levy	2
Hawthorne, Putnam	2
Lockhart, Orange	2
Loxahatchee Groves, Palm Beach	2
Saint Lucie West, St. Lucie	2
University Park, Manatee	2
Unknown, Broward	2
Valkaria, Brevard	2
West Villages, Sarasota	2
Crystal Springs, Pasco	2
Cudjoe Key, Monroe	2
Duette, Manatee	2
Anna Maria, Manatee	2
Lealman, Pinellas	2
Madison, Unknown	2
Maitland, Seminole	2
Mexico Beach, Bay	2
Missing, Hamilton	2
Panacea, Wakulla	2
Paxton, Walton	2
Yankeetown, Levy	2
Alturas, Polk	2
Lake City, Suwannee	2
Green Acres, Palm Beach	2
Forest City, Orange	2
Lake Harbor, Palm Beach	2
Logwood, Seminole	1
Loughman, Polk	1
Orlando, Brevard	1
Gastonia, Polk	1
Goldenrod, Seminole	1
Darien, Pasco	1
Deltona , Volusia	1
Bostwick, Putnam	1
Bartow, Unknown	1
Champions Gate, Polk	1
Chokoloskee, Collier	1
Palm Coast, Orange	1
Scottsmoor, Brevard	1
Saint Cloud, Orange	1
Saint Petersburg, Dade	1

# COVID-19: characteristics of 297,876 Florida resident cases

Data through Jul 14, 2020 verified as of Jul 15, 2020 at 09:25 AM

Data in this report are provisional and subject to change.

The table below includes the cities and counties of residence for cases in Florida residents based on the patient's ZIP Code.

Note that city is not always received as part of the initial notification and may be missing while the case is being investigated.

City and county	Cases
Woodville, Leon	1
Wimauma, Manatee	1
Ocala, Unknown	1
Ocean Breeze, Martin	1
Redington Beach, Pinellas	1
Orlando, Orange	1
Saint Cloud, Manatee	1
South Fort Myers, Lee	1
University Of Central Fl, Orange	1
Valrico, Orange	1
Tampa, Orange	1
Town N Country, Hillsborough	1
Trilby, Pasco	1
Winterpark, Unknown	1
Wewahitchka, Calhoun	1
Live Oak, Columbia	1
Long Key, Monroe	1
Horseshoe Beach, Dixie	1
Hurlburt Field, Okaloosa	1
Hialeah, Unknown	1
Gibsonia, Polk	1
Greenacres, Unknown	1
Apopka, Unknown	1
Alligator Point, Wakulla	1
Bayshore Gardens, Manatee	1
Bonita Springs, Collier	1
Everett, Dade	1
Everglades City, Collier	1
Fort Charlotte, Charlotte	1
Daytona Beach Shores, Volusia	1
Doral, Broward	1
West Bradenton, Manatee	1
Wintergarden, Orange	1
Venice, Hillsborough	1
Tallahassee, Unknown	1
The Villages, Marion	1
Seven Springs, Pasco	1
River Ranch, Polk	1
Port Everglades, Broward	1
Quail Heights, Dade	1
Ramrod Key, Monroe	1
Palm Beach Shores, Palm Beach	1
Orlando, Columbia	1
Jensen Beach, St. Lucie	1
Jupiter, Duval	1
Laud-By-The-Sea, Broward	1
Lake Como, Putnam	1
Boca Raton, Orange	1
Bagdad, Santa Rosa	1
Hallandale Beach, Unknown	1
Immokalee, Lee	1
Indian Shores, Pinellas	1
Okeechobee, St. Lucie	1
Oklawaha, Marion	1
Olustee, Baker	1
Miamf, Dade	1
Milton, Escambia	1
Parker, Bay	1
Sewalls Point, Martin	1

# COVID-19: characteristics of 297,876 Florida resident cases

Data through Jul 14, 2020 verified as of Jul 15, 2020 at 09:25 AM

Data in this report are provisional and subject to change.

The table below includes the cities and counties of residence for cases in Florida residents based on the patient's ZIP Code.

Note that city is not always received as part of the initial notification and may be missing while the case is being investigated.

City and county	Cases
San Antonio, Unknown	1
Wesley Chapel, Alachua	1
Switzerland, St. Johns	1
Tampa Palms, Hillsborough	1
South Daytona Beach, Volusia	1
Unknown, Columbia	1
Unknown, Palm Beach	1
Watersound, Walton	1
Tewksbury, Orange	1
Tampa, Pinellas	1
Fl, Dade	1
Fellsmele, Brevard	1
Estero, Collier	1
Florence Villa, Polk	1
Jacksonville, Clay	1
Laurel, Sarasota	1
Manalapan, Palm Beach	1
Bay Lake, Orange	1
Beverly Beach, Flagler	1
Aollywoss, Dade	1
Arndale, Hillsborough	1
Cortez, Manatee	1
Clermont, Orange	1
Clermont, Polk	1
Doctors Inlet, Clay	1
Cape Haze, Charlotte	1
Alva, Escambia	1
Bayou George, Bay	1
Clearwater, Pasco	1
Davie, Unknown	1
Homosassa, Orange	1
Hudson, Pinellas	1
Indian Creek Village, Dade	1
Gonzalez, Escambia	1
Jacksonville Naval Air Station, Duval	1
Jacksonville Naval Hospital, Duval	1
Mesa, Unknown	1
Miami Gardens, Unknown	1
Perth Amboy, Hillsborough	1
Panama City, Unknown	1
Rivera Beach, Palm Beach	1
Sanford, Orange	1
Orange Lake, Marion	1
Mount Dora, Seminole	1
North Fort Myers, Charlotte	1
North Laud, Unknown	1
Sharpes, Brevard	1
Sorrento, Orange	1
Watersound, Bay	1
Uknown, Unknown	1
Unable To Obtain, Palm Beach	1
University Of Tampa, Hillsborough	1
Yeehaw, Okeechobee	1
Unknown, Volusia	1
Westville, Walton	1
Venice, Manatee	1
Port Saint Lucie, Palm Beach	1
Saint Johns, Duval	1
Pensacola Beach, Escambia	1



# COVID-19: characteristics of 297,876 Florida resident cases

Data through Jul 14, 2020 verified as of Jul 15, 2020 at 09:25 AM

Data in this report are provisional and subject to change.

The table below includes the cities and counties of residence for cases in Florida residents based on the patient's ZIP Code.

Note that city is not always received as part of the initial notification and may be missing while the case is being investigated.

City and county	Cases
Pine Castle, Orange	1
Miccosukee, Leon	1
Milligan, Okaloosa	1
Miami, Lee	1
Glenwood, Volusia	1
Hallandale, Unknown	1
Homeless, Hillsborough	1
Homeless, Monroe	1
Homeless, Pinellas	1
Hutchinson Island, St. Lucie	1
Attached, Brevard	1
Alpharetta, Broward	1
Clarcona, Orange	1
Deltona, Seminole	1
Jena, Taylor	1
Lauderhill, Unknown	1
Litchfield Park, Unknown	1
Laurel Hill, Walton	1
Mayport Naval Station, Duval	1
Mount Dora, Orange	1
New Church, Palm Beach	1
El Jobean, Charlotte	1
Franklin, Orange	1
Haines City, Orange	1
Clearwater, Hillsborough	1
Apo, Collier	1
Astor, Volusia	1
Austin, Dade	1
West Hollywood, Broward	1
Unknown Out Of Area, Palm Beach	1
Unknown, Duval	1
Seacrest, Bay	1
Pensacola Naval Hospital, Escambia	1
Orlando, Osceola	1
Point Washington, Walton	1
Weston, Unknown	1
Winter Springs, Orange	1
University Of Miami, Dade	1
Unknown, Manatee	1
Virginia Gardens, Dade	1
Wakulla Springs, Wakulla	1
Windermere, Unknown	1
Xifamk, Dade	1
Salem, Taylor	1
Samoset, Manatee	1
Sarasota, Unknown	1
Seacrest, Walton	1
Twentynine Palms, Broward	1
South Palm Beach, Palm Beach	1
Oakland Park, Unknown	1
New Smyrna, Volusia	1
North Port, Manatee	1
Pooler, Broward	1
Palma Ceia, Hillsborough	1
Okeechobee, Martin	1
Miamksaohes, Dade	1
Indian River Shores, Indian River	1
Indian Rock Beach, Pinellas	1
Hillsboro Beach, Broward	1

# COVID-19: characteristics of 297,876 Florida resident cases

Data through Jul 14, 2020 verified as of Jul 15, 2020 at 09:25 AM

Data in this report are provisional and subject to change.

The table below includes the cities and counties of residence for cases in Florida residents based on the patient's ZIP Code. Note that city is not always received as part of the initial notification and may be missing while the case is being investigated.

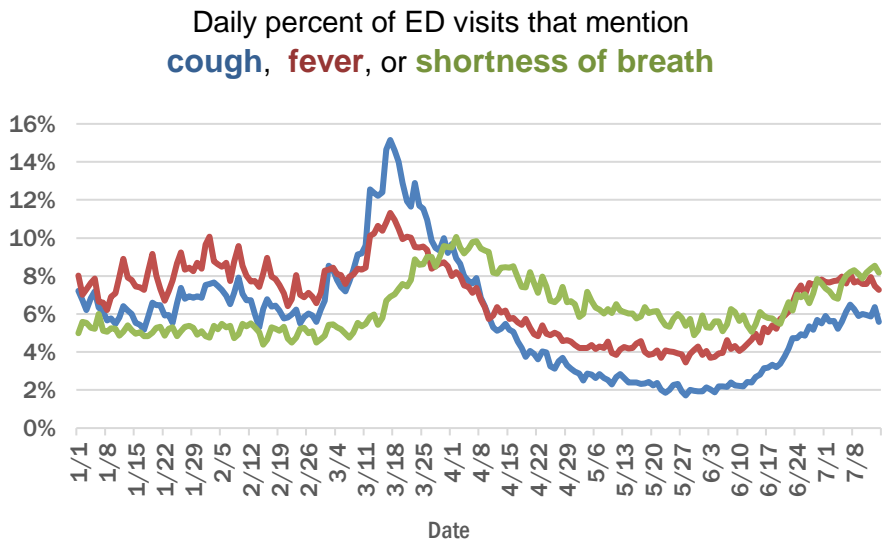
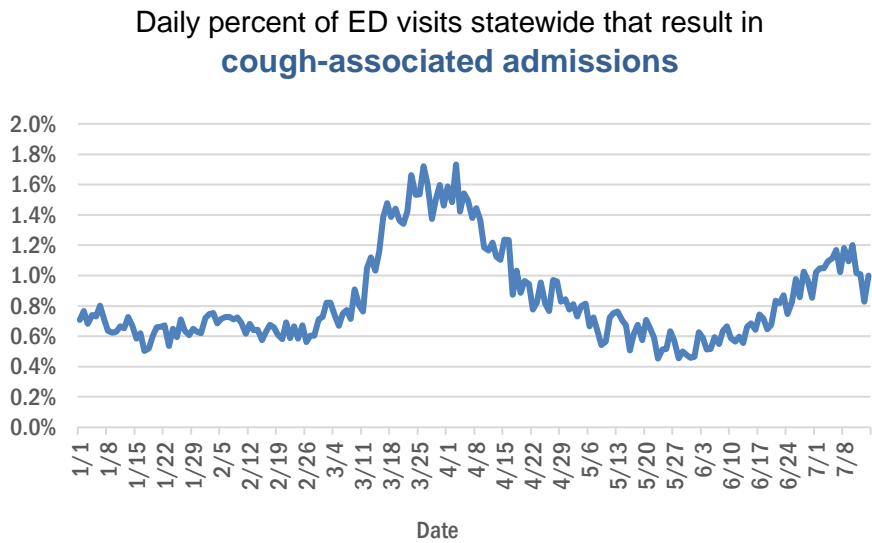
City and county	Cases
Holder, Citrus	1
Miami Dade, Unknown	1
Cypress Gardens, Polk	1
Everglades National Park, Dade	1
Fanning Springs, Gilchrist	1
Fernandina, Nassau	1
Total	297,876

# COVID-19: additional surveillance information

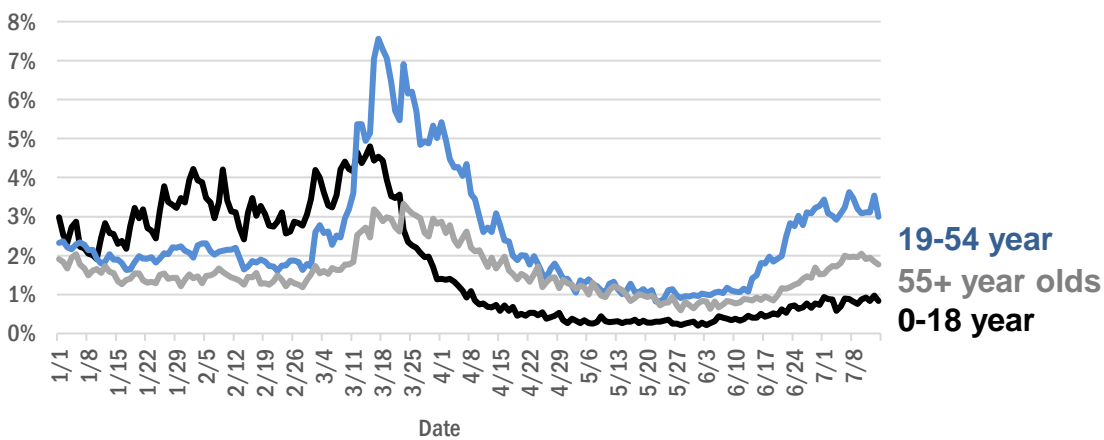
Data through Jul 14, 2020 verified as of Jul 15, 2020 at 09:25 AM

Data in this report are provisional and subject to change.

## Statewide emergency department (ED) chief complaint and admission data



## Daily percent of ED visits statewide that mention cough by age group



The Electronic Surveillance System for the Early Notification of Community-Based Epidemics (ESSENCE-FL) includes chief complaint data from 211 of 212 Florida EDs. Data are transmitted electronically to ESSENCE-FL daily or hourly.

# COVID-19: All persons with tests reported

Data through Jul 14, 2020 verified as of Jul 15, 2020 at 09:25 AM

Data in this report are provisional and subject to change.

The table below includes persons with laboratory results that the Department of Health has received electronically or by mail/fax for Florida residents and non-Florida residents.

County	Awaiting testing	Inconclusive	Negative	Positive	Percent positive	Total tested
Dade	180	825	376,451	72,317	16%	449,593
Broward	80	273	255,720	34,153	12%	290,146
Palm Beach	192	358	169,815	22,788	12%	192,961
Hillsborough	149	208	153,814	21,018	12%	175,040
Orange	326	223	170,841	19,909	10%	190,973
Duval	98	187	130,832	14,152	10%	145,171
Pinellas	41	87	117,284	12,080	9%	129,451
Lee	22	24	70,231	10,849	13%	81,104
Polk	26	69	59,087	8,206	12%	67,362
Collier	141	42	39,217	6,872	15%	46,131
Manatee	2	33	52,713	5,564	10%	58,310
Osceola	63	78	34,210	4,751	12%	39,039
Escambia	20	17	43,426	4,745	10%	48,188
Seminole	31	43	45,102	4,665	9%	49,810
Pasco	47	38	44,979	4,363	9%	49,380
Volusia	21	60	48,707	4,355	8%	53,122
Brevard	11	42	59,193	3,722	6%	62,957
Sarasota	12	22	46,732	3,447	7%	50,201
St. Lucie	187	39	27,055	3,209	11%	30,303
Martin	39	32	17,881	2,935	14%	20,848
Lake	45	29	43,004	2,882	6%	45,915
Leon	11	81	38,454	2,606	6%	41,141
Alachua		16	50,804	2,322	4%	53,142
St. Johns	75	30	26,671	2,079	7%	28,780
Marion	148	19	30,676	1,938	6%	32,633
Clay	10	12	21,863	1,641	7%	23,516
Okaloosa	25	22	17,629	1,532	8%	19,183
Bay	2	25	11,818	1,523	11%	13,366
Santa Rosa	2	12	16,562	1,523	8%	18,097
Indian River	29	11	18,322	1,386	7%	19,719
Hendry	1	11	5,173	1,288	20%	6,472
Charlotte	4	10	16,490	1,281	7%	17,781
Desoto	8	18	6,104	997	14%	7,119
Hernando	1	4	12,703	987	7%	13,694
Columbia	3	22	7,344	929	11%	8,295
Putnam	3	5	8,420	855	9%	9,280
Suwannee	1	3	4,506	788	15%	5,297
Sumter	41	12	12,051	721	6%	12,784
Gadsden	1	17	6,796	687	9%	7,500
Jackson	4	12	6,179	675	10%	6,866
Monroe	39	3	7,637	670	8%	8,310
Citrus	7	8	12,557	665	5%	13,230
Walton		4	4,791	649	12%	5,444
Hardee		1	2,801	633	18%	3,435
Highlands	5	15	10,898	627	5%	11,540
Nassau	16	9	9,703	600	6%	10,312
Okeechobee	1	7	4,136	586	12%	4,729
Flagler	3	12	10,178	557	5%	10,747

# COVID-19: All persons with tests reported

Data through Jul 14, 2020 verified as of Jul 15, 2020 at 09:25 AM

Data in this report are provisional and subject to change.

The table below includes persons with laboratory results that the Department of Health has received electronically or by mail/fax for Florida residents and non-Florida residents.

County	Awaiting testing	Inconclusive	Negative	Positive	Percent positive	Total tested
Hamilton	1	1	2,884	444	13%	3,329
Madison	1	14	3,337	402	11%	3,753
Unknown		17	3,449	332	9%	3,798
Levy		10	3,912	296	7%	4,218
Liberty		2	2,365	281	11%	2,648
Holmes		4	2,626	258	9%	2,888
Washington	2	1	2,185	214	9%	2,400
Glades		2	588	213	27%	803
Wakulla		8	3,113	206	6%	3,327
Baker	9		3,063	187	6%	3,250
Calhoun	1	6	1,186	184	13%	1,376
Gilchrist		5	2,600	169	6%	2,774
Bradford	1	3	3,126	161	5%	3,290
Taylor		3	1,692	158	9%	1,853
Dixie		1	1,641	135	8%	1,777
Union		1	2,590	123	5%	2,714
Gulf		4	2,350	109	4%	2,463
Jefferson		1	1,542	100	6%	1,643
Lafayette		2	647	64	9%	713
Franklin	1	1	1,687	47	3%	1,735
Total	2,189	3,216	2,434,143	301,810	11%	2,739,169

# COVID-19: testing by laboratory

Data through Jul 14, 2020 verified as of Jul 15, 2020 at 09:25 AM

Data in this report are provisional and subject to change.

The numbers in the table below represent the number for whom test results were received by the Department of Health. A person can be tested by more than one laboratory and can have both positive and negative results. **Therefore, the sum of the numbers in each column will be larger than the total number of people tested.**

Reporting lab	Inconclusive	Negative	Positive	Percent positive	Total
QUEST DIAGNOSTICS - TAMPA	1,743	485,826	60,734	11%	548,303
LABORATORY CORPORATION OF AMERICA	442	412,789	56,316	12%	469,547
BIO REFERENCE LABORATORIES, INC	2,032	315,466	50,450	14%	367,948
GENETWORX	654	243,256	18,460	7%	262,370
REALTOX LABS LLC	850	121,771	14,220	10%	136,841
NORTHWEST LABORATORY	77	101,867	2,814	3%	104,758
ADVENT HEALTH LAB	94	93,261	11,357	11%	104,712
CURATIVE_LABS	1,026	63,361	1,922	3%	66,309
MEDICAL DIAGNOSTIC LABORATORIES	308	47,079	5,649	11%	53,036
KORVALABS, INC	286	50,051	1,389	3%	51,726
BIOCOLLECTIONS WORLDWIDE, INC	71	43,271	6,581	13%	49,923
MAYO CLINIC LABORATORIES	71	45,718	3,795	8%	49,584
BAYCARE LABORATORIES LLC	173	40,576	3,852	9%	44,601
QUEST DIAGNOSTICS NICHOLS INSTITUTE, INC.	123	39,719	4,297	10%	44,139
MEMORIAL REGIONAL HOSPITAL SOUTH	15	36,141	7,676	18%	43,832
ORLANDO REG MED CENTER CLINICAL LAB	306	33,294	3,739	10%	37,339
SACRED HEART HOSPITAL LABORATORY	2	33,678	3,100	8%	36,780
TAMPA GENERAL HOSPITAL	4	30,617	2,096	6%	32,717
BPHL-JACKSONVILLE	7	27,674	4,952	15%	32,633
TESTING MATTERS INC		28,391	3,720	12%	32,111
UF PATHLABS	33	30,315	882	3%	31,230
DIATHERIX LABORATORIES		27,449	3,139	10%	30,588
JACKSON MEMORIAL HOSPITAL CLINICAL LAB	79	22,882	4,826	17%	27,787
ARUP LABORATORIES		25,039	1,560	6%	26,599
VIRACOR-EUROFINS LABORATORIES		19,544	6,078	24%	25,622
BPHL-MIAMI	167	18,464	3,352	15%	21,983
SHANDS AT THE UNIVERSITY OF FLORIDA	3	18,037	739	4%	18,779
BPHL-TAMPA (SPECTRUM BLVD)	43	15,994	2,203	12%	18,240
AIT LABORATORIES		15,359	1,654	10%	17,013
LAKELAND REGIONAL MEDICAL CENTER	29	13,651	1,386	9%	15,066
ST VINCENT'S MEDICAL CENTER - RIVERSIDE	1	13,511	1,343	9%	14,855
WALGREENS	9	12,626	1,987	14%	14,622
CAPE CORAL HOSPITAL CLINICAL LABORATORY		12,281	2,161	15%	14,442
BROWARD GENERAL MEDICAL CENTER-CLINICAL LAB	2	11,221	1,356	11%	12,579
STATLAB_MOBILE		10,278	714	6%	10,992
BAPTIST HOSPITAL OF MIAMI CLINICAL LABORATORY	5	9,316	1,568	14%	10,889
SHANDS JACKSONVILLE MEDICAL CENTER INC	30	9,485	640	6%	10,155
CLEVELAND CLINIC HOSPITAL LAB	3	8,959	776	8%	9,738
FLORIDA HOSPITAL - TAMPA	5	8,828	718	8%	9,551
ADVENTHEALTH DAYTONA BEACH	14	8,862	560	6%	9,436
BAPTIST MEDICAL CENTER JACKSONVILLE	1	8,851	512	5%	9,364
NAPLES COMMUNITY HOSPITAL	10	8,433	815	9%	9,258
ST JOSEPHS HOSPITAL LABORATORY	6	7,395	842	10%	8,243
PALMETTO GENERAL HOSPITAL LAB	2	6,051	1,717	22%	7,770
LABCORP BURLINGTON (ELR)	2	7,424	218	3%	7,644
INTEGRATED REGIONAL LABORATORIES LLP		6,462	921	12%	7,383
MOUNT SINAI MEDICAL CENTER	3	6,420	623	9%	7,046



# COVID-19: testing by laboratory

Data through Jul 14, 2020 verified as of Jul 15, 2020 at 09:25 AM

Data in this report are provisional and subject to change.

The numbers in the table below represent the number for whom test results were received by the Department of Health. A person can be tested by more than one laboratory and can have both positive and negative results. **Therefore, the sum of the numbers in each column will be larger than the total number of people tested.**

Reporting lab	Inconclusive	Negative	Positive	Percent positive	Total
REAL DIAGNOSTICS	77	6,449	465	7%	6,991
MORTON PLANT HOSPITAL-ADLER INSTITUTE	7	6,458	487	7%	6,952
JFK MEDICAL CENTER LAB		5,728	1,030	15%	6,758
SARASOTA MEMORIAL HOSPITAL MAIN LAB	12	5,947	492	8%	6,451
SOUTH MIAMI HOSPITAL LAB	8	5,645	790	12%	6,443
TALLAHASSEE MEMORIAL HOSPITAL	1	5,932	380	6%	6,313
SAINT MARY'S MEDICAL CENTER	7	5,316	788	13%	6,111
MEMORIAL REGIONAL HOSPITAL CLINICAL LABORATORY	6	5,477	407	7%	5,890
NORTH FLORIDA REGIONAL MEDICAL CENTER		5,467	411	7%	5,878
BRANDON REGIONAL HOSPITAL		4,904	815	14%	5,719
WELLINGTON REGIONAL MED CTR LAB	3	4,791	735	13%	5,529
FLORIDA HOSPITAL WATERMAN LABORATORY	9	5,133	354	6%	5,496
INDIAN RIVER MEDICAL CENTER LAB		5,161	238	4%	5,399
LARKIN COMMUNITY HOSPITAL	10	4,392	791	15%	5,193
ELABNETWORK	1	4,663	495	10%	5,159
MILLENNIUM PHYSICIAN GROUP		4,243	831	16%	5,074
JUPITER MEDICAL CENTER LAB	7	4,271	624	13%	4,902
NICKLAUS CHILDREN'S HOSPITAL	9	4,169	592	12%	4,770
ECCO LAB GROUP CO	128	3,706	875	19%	4,709
BAPTIST HOSPITAL OF MIAMI MOLECULAR DIAGNOSTICS	41	4,143	524	11%	4,708
DELRAY MEDICAL CENTER	2	4,034	524	11%	4,560
ST ANTHONY'S HOSPITAL LAB	10	4,017	528	12%	4,555
HOMESTEAD HOSPITAL CLINICAL LABORATORY		3,668	883	19%	4,551
AEGIS SCIENCES CORPORATION	26	4,260	211	5%	4,497
MEMORIAL HOSPITAL JACKSONVILLE	8	3,461	792	19%	4,261
ARNOLD PALMER MEDICAL CENTER CLINICAL LAB		4,164	84	2%	4,248
WEST KENDALL BAPTIST HOSPITAL LABORATORY	2	3,405	718	17%	4,125
WINTER HAVEN HOSPITAL CLINICAL LABORATORY	1	3,443	599	15%	4,043
ST JOSEPHS HOSPITAL SOUTH LABORATORY	3	3,429	492	13%	3,924
MEASE COUNTRYSIDE LAB		3,419	334	9%	3,753
OSCEOLA REGIONAL MEDICAL CENTER	1	3,181	525	14%	3,707
GOOD SAMARITAN MEDICAL CENTER LAB	1	3,093	585	16%	3,679
GULF COAST MEDICAL CENTER MICROLAB		2,657	872	25%	3,529
ORANGE PARK MEDICAL CENTER	4	2,826	673	19%	3,503
QUEST DIAGNOSTICS NICHOLS INSTITUTE - SJC (ELR)	4	3,053	406	12%	3,463
BAPTIST MEDICAL CENTER SOUTH		3,206	242	7%	3,448
NEW YORK STATE ELR - SUNRISE MEDICAL LABORATORIES		3,288	77	2%	3,365
LAWNWOOD REGIONAL MEDICAL CENTER		2,878	384	12%	3,262
MEMORIAL HOSPITAL WEST LABORATORY SERVICES	7	2,861	287	9%	3,155
FLORIDA HOSPITAL HEARTLAND MED CTR CLINICAL LAB	1	2,911	212	7%	3,124
MANATEE MEMORIAL HOSPITAL		2,764	304	10%	3,068
WESTSIDE REGIONAL MED CTR	1	2,571	489	16%	3,061
WEST BOCA MEDICAL CENTER LAB		2,736	314	10%	3,050
APPLIED INGENUITY DIAGNOSTICS LLC		2,879	149	5%	3,028

# COVID-19: testing by laboratory

Data through Jul 14, 2020 verified as of Jul 15, 2020 at 09:25 AM

Data in this report are provisional and subject to change.

The numbers in the table below represent the number for whom test results were received by the Department of Health. A person can be tested by more than one laboratory and can have both positive and negative results. **Therefore, the sum of the numbers in each column will be larger than the total number of people tested.**

Reporting lab	Inconclusive	Negative	Positive	Percent positive	Total
HALIFAX MEDICAL CENTER LAB	3	2,594	381	13%	2,978
HEALTH PARK MEDICAL CENTER CLINICAL LAB		2,377	595	20%	2,972
Lee Memorial Hospital		2,444	524	18%	2,968
AVENTURA HOSPITAL LAB		2,209	757	26%	2,966
CLEVELAND CLINIC MARTIN SOUTH HOSPITAL		2,698	236	8%	2,934
BROWARD HEALTH NORTH CLINICAL LABORATORY		2,544	374	13%	2,918
FLORIDA HOSPITAL WESLEY CHAPEL	1	2,645	247	9%	2,893
MERCY HOSPITAL A CAMPUS OF PLANTATION GEN HOSP LAB		2,222	667	23%	2,889
NCH NORTH NAPLES HOSPITAL LAB		2,561	297	10%	2,858
CORAL SPRINGS MED CTR		2,597	260	9%	2,857
PALM BEACH GARDENS MEDICAL CTR LAB		2,566	273	10%	2,839
CORAL GABLES HOSPITAL CLINICAL LABORATORY		2,209	605	21%	2,814
MOFFITT CANCER CENTER	5	2,789	20	1%	2,814
DOCTORS HOSPITAL	2	2,269	542	19%	2,813
WEST FLORIDA HOSPITAL LAB		2,257	549	20%	2,806
LARGO MEDICAL CENTER		2,434	358	13%	2,792
NORTH SHORE MEDICAL CENTER		2,155	631	23%	2,786
BAPTIST HOSPITAL LABORATORY	4	2,413	360	13%	2,777
PALMS WEST HOSPITAL LAB		2,172	540	20%	2,712
OAK HILL HOSPITAL		2,475	205	8%	2,680
BETHESDA HOSPITAL EAST		2,337	271	10%	2,608
NORTHWEST MEDICAL CENTER		2,065	539	21%	2,604
MARTIN HOSPITAL SOUTH LAB		2,504	90	3%	2,594
FLORIDA HOSPITAL ZEPHYRHILLS		2,422	161	6%	2,583
FLORIDA HOSPITAL FLAGLER	2	2,326	136	6%	2,464
BLAKE MEDICAL CENTER		1,991	378	16%	2,369
FLORIDA MEDICAL CENTER - A CAMPUS OF NORTH SHORE	2	1,913	365	16%	2,280
REGIONAL MEDCIAL CENTER BAYONET POINT	1	2,102	151	7%	2,254
Capital Regional Medical Ctr		1,845	358	16%	2,203
NEMOURS CHILDRENS HOSPITAL		2,146	42	2%	2,188
FLORIDA HOSPITAL OF CARROLLWOOD		1,795	293	14%	2,088
NORTHSIDE HOSPITAL AND HEART INSTITUTE		1,791	292	14%	2,083
MEDICAL CENTER OF TRINITY CLINICAL LABORATORY		1,784	298	14%	2,082
MORTON PLANT-MEASE		1,931	143	7%	2,074
IMPERIAL POINT MEDICAL CENTER		1,871	189	9%	2,060
ST JOSEPHS NORTH HOSPITAL LAB		1,826	223	11%	2,049
MARTIN MEMORIAL HEALTH SYSTEM LABORATORY		1,880	154	8%	2,034
PLANTATION GENERAL HOSPITAL		1,508	482	24%	1,990
FLORIDA HOSPITAL DELAND		1,684	305	15%	1,989
QUEST DIAGNOSTICS - WEST HILLS	2	1,908	68	3%	1,978
BAPTIST MEDICAL CENTER - BEACHES		1,806	106	6%	1,912
OCALA REGIONAL MEDICAL CENTER		1,756	147	8%	1,903
CARDIOTROPIC LABS		1,493	406	21%	1,899
LAKE CITY MEDICAL CENTER		1,498	371	20%	1,869
DR. P. PHILLIPS HOSPITAL		1,783	29	2%	1,812

# COVID-19: testing by laboratory

Data through Jul 14, 2020 verified as of Jul 15, 2020 at 09:25 AM

Data in this report are provisional and subject to change.

The numbers in the table below represent the number for whom test results were received by the Department of Health. A person can be tested by more than one laboratory and can have both positive and negative results. **Therefore, the sum of the numbers in each column will be larger than the total number of people tested.**

Reporting lab	Inconclusive	Negative	Positive	Percent positive	Total
LAKEWOOD RANCH MEDICAL CENTER		1,634	149	8%	<b>1,783</b>
CENTRAL FLORIDA REGIONAL HOSPITAL		1,498	226	13%	<b>1,724</b>
WESTCHESTER HOSPITAL	11	1,435	266	16%	<b>1,712</b>
SOUTH FLORIDA BAPTIST HOSPITAL MICRO	1	1,462	231	14%	<b>1,694</b>
ST LUCIE MEDICAL CENTER		1,411	255	15%	<b>1,666</b>
GULF COAST MEDICAL CENTER LAB		1,418	222	14%	<b>1,640</b>
SOUTH LAKE HOSPITAL CLINICAL LAB		1,604	27	2%	<b>1,631</b>
OPTEO LABORATORY		1,500	29	2%	<b>1,529</b>
BAPTIST MEDICAL CENTER - NASSAU		1,436	66	4%	<b>1,502</b>
FLORIDA HOSPITAL NORTH PINELLAS	5	1,387	103	7%	<b>1,495</b>
MEMORIAL HOSPITAL- MIRAMAR	7	1,373	109	7%	<b>1,489</b>
POINCIANA MEDICAL CENTER		1,087	376	26%	<b>1,463</b>
LEESBURG REGIONAL MEDICAL CENTER		1,292	130	9%	<b>1,422</b>
UNIVERSITY HOSPITAL AND MEDICAL CENTER		1,095	325	23%	<b>1,420</b>
LEE HEALTH COCONUT POINT CLINICAL LAB	1	1,148	255	18%	<b>1,404</b>
MEMORIAL HOSPITAL MICRO		1,269	134	10%	<b>1,403</b>
PHYSICIANS REGIONAL MEDICAL CENTER - PINE RIDGE RD		1,144	254	18%	<b>1,398</b>
QUEST DIAGNOSTICS	2	1,137	223	16%	<b>1,362</b>
ST VINCENT'S MEDICAL CENTER - SOUTHSIDE		1,307	25	2%	<b>1,332</b>
WEST PALM HOSPITAL LAB		1,143	183	14%	<b>1,326</b>
WEST MARION COMMUNITY HOSPITAL LAB		1,209	89	7%	<b>1,298</b>
ST PETERSBURG GENERAL HOSPITAL		933	364	28%	<b>1,297</b>
HIALEAH HOSPITAL	3	939	340	27%	<b>1,282</b>
MEMORIAL HOSPITAL PEMBROKE	2	1,147	130	10%	<b>1,279</b>
MEASE DUNEDIN HOSPITAL	1	1,160	118	9%	<b>1,279</b>
SOUTH SEMINOLE HOSPITAL LABORATORY		1,230	31	2%	<b>1,261</b>
UNIVERSITY OF MIAMI HOSPITAL	5	823	428	34%	<b>1,256</b>
CITRUS MEMORIAL HOSPITAL LABORATORY		1,206	30	2%	<b>1,236</b>
OVIEDO MEDICAL CENTER		1,040	183	15%	<b>1,223</b>
FORT WALTON BEACH MEDICAL CENTER		1,083	131	11%	<b>1,214</b>
QUEST DIAGNOSTICS LENEXA	2	1,143	60	5%	<b>1,205</b>
CLINICORE LABS		1,112	88	7%	<b>1,200</b>
DOCTORS HOSPITAL OF SARASOTA CLINICAL LABORATORY		1,077	108	9%	<b>1,185</b>
VISTA CLINICAL		743	435	37%	<b>1,178</b>
MEDCOMP SCIENCES LLC	19	853	301	26%	<b>1,173</b>
BAPTIST NORTH EMERGENCY CENTER		811	344	30%	<b>1,155</b>
FLORIDA HOSPITAL FISH MEMORIAL		909	178	16%	<b>1,087</b>
BAYFRONT MEDICAL CENTER		814	259	24%	<b>1,073</b>
PALMS OF PASADENA HOSPITAL		933	137	13%	<b>1,070</b>
QUEST NEW ENGLAND	1	1,002	37	4%	<b>1,040</b>
LOWER KEYS MEDICAL CENTER		954	63	6%	<b>1,017</b>
LMHS		901	75	8%	<b>976</b>
QUEST DIAGNOSTICS - MIRAMAR	6	285	680	70%	<b>971</b>
RAULERSON HOSPITAL		811	139	15%	<b>950</b>
SOUTH BAY HOSPITAL MICRO		815	133	14%	<b>948</b>
ORLANDO VA MEDICAL CENTER		852	73	8%	<b>925</b>
QUEST DIAGNOSTICS - ATLANTA		777	139	15%	<b>916</b>

# COVID-19: testing by laboratory

Data through Jul 14, 2020 verified as of Jul 15, 2020 at 09:25 AM

Data in this report are provisional and subject to change.

The numbers in the table below represent the number for whom test results were received by the Department of Health. A person can be tested by more than one laboratory and can have both positive and negative results. **Therefore, the sum of the numbers in each column will be larger than the total number of people tested.**

Reporting lab	Inconclusive	Negative	Positive	Percent positive	Total
BARTOW REGIONAL MEDICAL CENTER	1	752	127	14%	880
PUTNAM COMMUNITY MEDICAL CENTER		792	85	10%	877
VIKOR SCIENTIFIC	2	601	273	31%	876
PHYSICIANS REGIONAL MEDICAL CENTER - COLLIER BLVD	1	724	141	16%	866
BMCT Molecular Diagnostics Subsection		687	174	20%	861
THE VILLAGES REGIONAL HOSPITAL		774	64	8%	838
TWIN CITIES HOSPITAL		779	56	7%	835
CLEVELAND CLINIC TRADITION HOSPITAL		737	98	12%	835
ST VINCENTS CLAY COUNTY		774	22	3%	796
FLORIDA HOSPITAL ORLANDO		745	39	5%	784
ADVENTHEALTH OCALA LABORATORY		686	89	11%	775
AMERICAN HEALTH ASSOCIATES	5	479	277	36%	761
CLEVELAND CLINIC MARTIN NORTH HOSPITAL		651	109	14%	760
BETHESDA HOSPITAL WEST		687	47	6%	734
SYNERGY LABORATORIES	2	678	50	7%	730
LAKESIDE MEDICAL CENTER		452	253	36%	705
HIGHLANDS REGIONAL MEDICAL CENTER		636	63	9%	699
QUEST DIAGNOSTICS INFECTIOUS DISEASE INC		282	379	57%	661
ENGLEWOOD COMMUNITY HOSPITAL		596	42	7%	638
CAPSTONE HEALTHCARE		424	199	32%	623
VISTA CLINICAL DIAGNOSTICS		356	267	43%	623
GULF BREEZE HOSPITAL LAB	1	541	69	11%	611
AVENTUS BIOLABS	1	378	230	38%	609
ACCESSDX	5	317	243	43%	565
SACRED HEART-EMERALD COAST		467	81	15%	548
BAPTIST EMERGENCY CENTER OAKLEAF		457	79	15%	536
MAKO MEDICAL LABORATORIES	8	209	319	60%	536
ORLANDO HEALTH		10	512	98%	522
EGLIN AIRFORCE BASE LAB		477	38	7%	515
ACCESS MEDICAL LABORATORIES		199	299	60%	498
MARINERS HOSPITAL		424	60	12%	484
LAB24 INC			464	100%	464
BAPTIST HEALTH EMERGENCY CENTER COUNTRY WALK		395	51	11%	446
MARTIN MEMORIAL HEALTH SYSTEMS LABORATORY		407	33	8%	440
BAPTIST EMERGENCY CENTER CLAY		393	47	11%	440
PATIENTS CHOICE LABORATORIES		175	265	60%	440
QUEST DIAGNOSTICS WOOD DALE		396	39	9%	435
VAMC ORLANDO		296	138	32%	434
PANCARE OF FLORIDA, INC			426	100%	426
SUNPATH MEDICAL DIAGNOSTICS LABORATORY		368	50	12%	418
LEE MEMORIAL HOSPITAL LAB			410	100%	410
QUEST	1	71	321	82%	393
NCH HEALTHCARE SYSTEM MICROBIOLOGY LAB		1	377	100%	378
QUEST DIAGNOSTICS NICHOLS INSTITUTE	5	349	15	4%	369
QUEST DIAGNOSTICS - IRVING	6	204	154	42%	364
BARDMOOR LABORATORY		297	41	12%	338
JACKSON HOSPITAL LAB		310	27	8%	337



# COVID-19: testing by laboratory

Data through Jul 14, 2020 verified as of Jul 15, 2020 at 09:25 AM

Data in this report are provisional and subject to change.

The numbers in the table below represent the number for whom test results were received by the Department of Health. A person can be tested by more than one laboratory and can have both positive and negative results. **Therefore, the sum of the numbers in each column will be larger than the total number of people tested.**

Reporting lab	Inconclusive	Negative	Positive	Percent positive	Total
AVERO DIAGNOSTICS - IRVING		301	31	9%	332
SOUTHEAST ALABAMA MEDICAL CENT		302	22	7%	324
LABCORP RTP	1	39	282	88%	322
TAMPA COMMUNITY HOSPITAL		201	120	37%	321
HEALTHQUEST ESOTERICS		63	255	80%	318
CLARITY LABS		264	48	15%	312
DAVITA LABS		283	26	8%	309
NCH NORTHEAST		211	96	31%	307
MEMORIAL PEMBROKE 24/7 CARE CENTER		229	75	25%	304
APPLIED INGENUITY DIAGNOSTICS		272	26	9%	298
BIO COLLECTIONS INC	1	151	139	48%	291
BIOREFERENCE LABORATORIES		24	265	92%	289
PATHNOSTICS		21	264	93%	285
PATIENTS FIRST - MAHAN DRIVE		161	113	41%	274
NONE		165	106	39%	271
DYNIX DIAGNOSTICS		186	85	31%	271
JACKSON HOSPITAL CLINICAL LABORATORY		221	42	16%	263
NIGHT LITE PEDIATRICS		152	110	42%	262
ADVANCE MEDICAL OF NAPLES			259	100%	259
ECCOLAB GROUP	1	73	180	71%	254
NEW YORK STATE ELR - NORTH SHORE LONG ISLAND JEWISH HEALTH		233	18	7%	251
PWN HEALTH	1	99	146	59%	246
NEW YORK STATE ELR - LENCO MEDICAL LABORATORY		233	12	5%	245
BOSTON HEART DIAGNOSTICS CORP		228	10	4%	238
LUMINUS DIAGNOSTICS		166	65	28%	231
PHYSICIANS STAT LAB		132	99	43%	231
MAKO GENOMICS		218	11	5%	229
UAB HIGHLANDS LABORATORY		220			220
GENESIS REFERENCE LABORATORIES		1	215	100%	216
MARTIN MEMORIAL LABORATORY AT ST LUCIE WEST		184	29	14%	213
INFORM DIAGNOSTICS		210	2	1%	212
NEW YORK STATE ELR - DEPARTMENT OF CLINICAL LABS		204	4	2%	208
MEDSCAN LABORATORY INC		136	71	34%	207
THERADOC		150	54	26%	204
NCF DIAGNOSTICS & DNA TECHNOLOGIES	10	14	178	88%	202
CORE DIAGNOSTIC LABORATORIES LLC		173	23	12%	196
MILLENNIUM PATHOLOGY			188	100%	188
LABCORP		18	170	90%	188
FLO-MEDILAB SERVICES		80	108	57%	188
DRS CLACK SPENCER WHITE & MCCORMACK PA D/B/A		122	56	31%	178
LAB CORP		59	113	66%	172
HENDRY REGIONAL MEDICAL CENTER		2	167	99%	169
ST CLOUD REGIONAL MEDICAL CENTER		126	39	24%	165
GENESIS MEDICAL LABORATORY MIAMI FL.		78	78	50%	156
BAPTIST MD ANDERSON CANCER CENTER		151			151
MINUTECLINIC LLC #3703		127	22	15%	149
NEW YORK STATE ELR - NYU HOSPITALS CENTER CLINICAL LABORATORIES		143	6	4%	149

# COVID-19: testing by laboratory

Data through Jul 14, 2020 verified as of Jul 15, 2020 at 09:25 AM

Data in this report are provisional and subject to change.

The numbers in the table below represent the number for whom test results were received by the Department of Health. A person can be tested by more than one laboratory and can have both positive and negative results. **Therefore, the sum of the numbers in each column will be larger than the total number of people tested.**

Reporting lab	Inconclusive	Negative	Positive	Percent positive	Total
ORLANDO VAMC		79	68	46%	147
TENNESSEE DOH - NASHVILLE	1	131	13	9%	145
PATHGROUP LABS LLC		88	51	37%	139
ORLANDO VETERANS AFFAIRS MEDICAL CENTER		32	107	77%	139
PATIENT'S FIRST		3	133	98%	136
EXPRESS GENE MOLECULAR DIAGNOSTIC LABORATORY		2	132	99%	134
NCH HEALTHCARE BONITA		92	41	31%	133
JAY HOSPITAL CLINICAL LABORATORY		113	20	15%	133
CURATIVE LABS		3	129	98%	132
SANFORD REFERENCE LAB		132			132
ASCEND CLINICAL		128	3	2%	131
MEMPHIS PATHOLOGY LABORATORY	1	124	5	4%	130
UNKNOWN		8	121	94%	129
BMHSI-AEL MICROBIOLOGY LABORATORY	2	102	20	16%	124
Assurance Scientific Laboratories		99	24	20%	123
NEW YORK STATE ELR - NEW YORK PRESBYTERIAN HOSPITAL CUMC CLINICAL		109	12	10%	121
SMA SPECIALITY MEDICAL LAB		51	69	58%	120
MILLENNIUM PATHOLOGY/MICROBIOLOGY LABORATORY			120	100%	120
LABCORP TAMPA	1	16	102	86%	119
NORTH FLORIDA PEDIATRICS-TALLAHASSEE		105	13	11%	118
FLORIDA HOSPITAL WAUCHULA		58	59	50%	117
FLAGLER HOSPITAL	3	15	98	84%	116
QUALITOX LABORATORIES		96	19	17%	115
VAMC WEST PALM LAB			115	100%	115
UAB UNIVERSITY OF ALABAMA HOSPITAL LAB		111	3	3%	114
SUNRISE MEDICAL LABORATORIES		81	33	29%	114
NEO GENOMICS - FORT MYERS		111	2	2%	113
LABTECH DIAGNOSTIC		83	30	27%	113
ALLIED HEALTH FORT PIERCE		112			112
INTEGRATED REGIONAL LABORATORIES		99	10	9%	109
ASAP LAB LLC		90	17	16%	107
LEHIGH REGIONAL MEDICAL CENTER LAB		95	12	11%	107
BAY PINES VAMC CLINICAL LABORATORY		1	102	99%	103
AVECINA MEDICAL OAKLEAF		7	96	93%	103
HOLY CROSS HOSPITAL LABORATORY			99	100%	99
STEWART REFERENCE LABORATORY			98	100%	98
NEW YORK STATE ELR - MOUNT SINAI LABORATORY		90	7	7%	97
MILLENNIUM LAB SERVICES			97	100%	97
UHEALTH CORAL GABLES/LENNAR MED CTR		90	7	7%	97
HOLMES REGIONAL MEDICAL CENTER		3	93	97%	96
JAMES A. HALEY VETERANS MICRO LAB			96	100%	96
NEW YORK STATE ELR - NEW YORK HOSPITAL LABORATORIES		90	5	5%	95
BUREAU OF CLINICAL LABORATORIES		79	16	17%	95
DIAGNOSTIC SOLUTIONS		3	90	97%	93
PALM BEACH COUNTY HEALTH DEPT LAB		91	1	1%	92
IRL MARKET LAB		60	32	35%	92
ROSEN MEDICAL CENTER		83	7	8%	90



# COVID-19: testing by laboratory

Data through Jul 14, 2020 verified as of Jul 15, 2020 at 09:25 AM

Data in this report are provisional and subject to change.

The numbers in the table below represent the number for whom test results were received by the Department of Health. A person can be tested by more than one laboratory and can have both positive and negative results. **Therefore, the sum of the numbers in each column will be larger than the total number of people tested.**

Reporting lab	Inconclusive	Negative	Positive	Percent positive	Total
SPARROW HEALTHCARE		1	87	99%	88
GENETWORKX		15	71	83%	86
FLORIDA LABORATORY ANALYSIS		27	58	68%	85
CENTRA CARE			85	100%	85
MICROGEN DX		1	81	99%	82
VETERANS AFFAIRS MEDICAL CENTER LAB			82	100%	82
USAFSAM/PHE		23	55	71%	78
BIOCERNA LLC	2	58	18	23%	78
MEDICAL DIAGNOSTICS LABORATORIES,INC		16	59	79%	75
ADVENT HEALTH DAYTONA		1	72	99%	73
NONA SCIENTIFIC			72	100%	72
MAYO CLINIC LABS - ROCHESTER MAIN CAMPUS		71	1	1%	72
GESSLER CLINIC			70	100%	70
Highlands Regional Hospital		63	6	9%	69
FLORIDA COMMUNITY HEALTH CENTERS INC			67	100%	67
ST JUDE CHILDREN'S RESEARCH HOSPITAL		61	6	9%	67
CENTRAL FLORIDA HEALTH CARE		46	21	31%	67
FLORIDA HOSPITAL HEARTLAND MED CTR LAKE PLACID		52	14	21%	66
CURATIVE LABS INC		11	55	83%	66
NEW YORK STATE ELR - ENZO CLINICAL LABS INC		64	1	2%	65
DAVITA LABORATORY SERVICES		48	14	23%	62
UR MEDICINE LABS- CENTRAL LABORATORY		61			61
MARTIN MEMORIAL MEDICAL CENTER LAB		10	49	83%	59
HOLY CROSS HOSPITAL		1	57	98%	58
P4 CLINICAL, LLC			57	100%	57
AVERO DIAGNOSTICS		46	11	19%	57
GENE BY GENE			55	100%	55
ACUTIS DIAGNOSTICS		48	6	11%	54
NITE LITE PEDIATRICS		22	31	58%	53
CENTRACARE		1	52	98%	53
FINLAY CLINICAL LABORATORY		24	29	55%	53
AVECINA MEDICAL SOUTHSIDE		29	24	45%	53
BROWARD HEALTH MEDICAL CENTER		1	51	98%	52
VAMC LAKE CITY		51	1	2%	52
SARASOTA CO. HEALTH DEPT # 58		40	11	22%	51
VAMC BAY PINES		1	49	98%	50
INTERCOASTAL MEDICAL GROUP			50	100%	50
NEW YORK STATE ELR - WADSWORTH HEALTH CENTER		46	3	6%	49
P4 DIAGNOSTIX LABORATORY NETWORK		1	48	98%	49
MILLENIUM PHYSICIANS GROUP			48	100%	48
BAPTIST HEALTH SOUTH FLORIDA		3	44	94%	47
LABCORP BURLINGTON (LPP)		10	37	79%	47
ARTHREX MEDICAL CENTER		26	20	43%	46
H LEE MOFFITT CANCER CENTER MICRO		46			46
ORLANDO VA PALMS		2	43	96%	45
FULGENT DIAGNOSTICS	3	36	6	13%	45
BIOREFERENCE LABORATORY		1	44	98%	45

# COVID-19: testing by laboratory

Data through Jul 14, 2020 verified as of Jul 15, 2020 at 09:25 AM

Data in this report are provisional and subject to change.

The numbers in the table below represent the number for whom test results were received by the Department of Health. A person can be tested by more than one laboratory and can have both positive and negative results. **Therefore, the sum of the numbers in each column will be larger than the total number of people tested.**

Reporting lab	Inconclusive	Negative	Positive	Percent positive	Total
AEL- MEMPHIS		17	28	62%	45
REAL DIAGNOSTIC	1	28	15	34%	44
HOSPITAL FOR SPECIAL SURGERY		42	1	2%	43
UNITED CLINICAL LABORATORY LLC			42	100%	42
MEDARBOR DIAGNOSTICS		1	41	98%	42
HURLBURT FIELD CLINIC		23	19	45%	42
QUEST TAMPA (NEW YORK ELR)		32	9	22%	41
LEON MEDICAL CENTER			40	100%	40
BAYCARE LAB		1	39	98%	40
FISHERMENS HOSPITAL CLINICAL LAB		37	2	5%	39
EGLIN REGIONAL MEDICAL CENTER		4	35	90%	39
NAVY HOSPITAL			38	100%	38
C.W. BILL YOUNG VA MEDICAL CENTER		3	35	92%	38
HEALTH FIRST-HOLMES REGIONAL			38	100%	38
VHA PUBLIC HEALTH REFERENCE LABORATORY- PALO ALTO		27	10	27%	37
TOM LEE COMMUNITY HEALTH CENTER			37	100%	37
NEW YORK STATE ELR - EMPIRECITY LABORATORIES		32	5	14%	37
FLORIDA HOSPITAL NEW SMYRNA		4	32	89%	36
MORTON PLANT HOSPITAL			35	100%	35
ADVENTHEALTH LAB			35	100%	35
ST. CLOUD MEDICAL GROUP		35			35
IRL		4	31	89%	35
RCA LABORATORY SERVICES, LLC		5	29	85%	34
CLINICAL REFERENCE LABORATORY		30	4	12%	34
VA MEDICAL CENTER		7	26	79%	33
MAVERICK LABS			32	100%	32
PROVIDENCE HOSPITAL LABORATORY		31	1	3%	32
AVECINA MEDICAL JULINGTON		6	25	81%	31
QUEST DIAGNOSTICS-VERO BEACH-37TH ST		31			31
SMA MEDICAL LABORATORY		8	23	74%	31
BioReference Laboratories, Inc		21	10	32%	31
AMELIA URGENT CARE			31	100%	31
LAB CORP RTP	1	2	27	90%	30
NEW YORK STATE ELR - KALEIDA HEALTH CENTER FOR LABORATORY		26	4	13%	30
LAB CORP TAMPA			29	100%	29
AKESOGEN		29			29
FLORIDA CLINICAL LABORATORY-BIOREFERENCE LABORATORIES		2	27	93%	29
CAREMOUNT MEDICAL - PATHOLOGY		29			29
MEDICAL DIAGNOSTIC LAB		1	28	97%	29
SANTA ROSA MEDICAL CENTER			29	100%	29
EAST MANATEE FAMILY	1		28	97%	29
SOLARIS DIAGNOSTICS		2	27	93%	29
DESOTO MEMORIAL HOSPITAL LAB			28	100%	28
UNKNOWN - BAD FACILITY CODE		2	25	93%	27
BAYCARE HEALTH SYSTEM		1	26	96%	27
SOUTH LAKE HOSPITAL		1	26	96%	27
FINLAY CLINICAL LABORATORY INC		26	1	4%	27

# COVID-19: testing by laboratory

Data through Jul 14, 2020 verified as of Jul 15, 2020 at 09:25 AM

Data in this report are provisional and subject to change.

The numbers in the table below represent the number for whom test results were received by the Department of Health. A person can be tested by more than one laboratory and can have both positive and negative results. **Therefore, the sum of the numbers in each column will be larger than the total number of people tested.**

Reporting lab	Inconclusive	Negative	Positive	Percent positive	Total
TRADITION MEDICAL CENTER LABORATORY		7	20	74%	27
NEW YORK STATE ELR - MONTEFIORE MEDICAL CENTER LABORATORIES - MOSES		21	6	22%	27
DEPARTMENT OF VETERANS AFFAIRS JAMES A. HALEY VETERANS HOSPITAL			27	100%	27
WUESTHOFF REF LABORATORY			27	100%	27
MORTON PLANT HOSPITAL/LAB		1	25	96%	26
AMERICAN PATHOLOGY PARTNERS		25	1	4%	26
P4CLINICAL	3	1	22	85%	26
INTEGRITY LABORATORIES			26	100%	26
FAWCETT MEMORIAL HOSPITAL-LAB		1	25	96%	26
CDC		17	9	35%	26
NAVAL HOSPITAL - JACKSONVILLE		1	25	96%	26
DYNAMIC MEDICAL USA			25	100%	25
CAPITAL REGIONAL MEDICAL CENTER		1	24	96%	25
QUEST DIAGNOSTIC INC		2	23	92%	25
TAMPA GENERAL HOSPITAL CLINICAL LAB			25	100%	25
SUNCOAST LABS			25	100%	25
ORLANDO REGIONAL MEDICAL CENTER		1	23	96%	24
UNIVERSITY OF MIAMI HOSPITAL & CLINICS		21	3	13%	24
SACRED HEART HOSPITAL ON THE GULF		10	14	58%	24
ST JOSEPHS CHILDRENS OUTREACH			23	100%	23
HUNTSVILLE HOSPITAL LABORATORY		18	5	22%	23
LABORATORY CORP OF AMERICA	1	4	18	78%	23
LABFIRST - DEPARTMENT OF PATHOLOGY		23			23
ALL CHILDREN'S HOSPITAL LAB		1	22	96%	23
LABORATORY DYNAMICS		20	3	13%	23
ST. ANTHONY'S HOSPITAL			22	100%	22
Quest Diag Unspecifd		4	18	82%	22
PENNSYLVANIA DEPT OF HEALTH		19	3	14%	22
ST VINCENT'S BIRMINGHAM LABORATORY		22			22
JACKSON MEMORIAL HOSPITAL			21	100%	21
MOBILE INFIRMARY MED CENTER PATH LAB		19	2	10%	21
NEW YORK STATE ELR - NEWYORK-PRESBYTERIAN/QUEENS DIAGNOSTIC		20	1	5%	21
QDX PATHOLOGY SERVICES		13	8	38%	21
QUEST DIAGNOSTICS NICHOLS INSTITUTE- LPP		3	17	85%	20
CHILDREN'S HOSPITAL OF ALABAMA		20			20
ST. MARY'S MEDICAL CENTER LAB			20	100%	20
MIAMI BEACH COMMUNITY HEALTH CENTER			20	100%	20
ST. CLOUD HOSPITAL		20			20
BROWARD HEALTH CORAL SPRINGS EPIDEMIOLOGY DEPT			20	100%	20
NEW YORK STATE ELR - WHITE PLAINS HOSPITAL CENTER LAB		19			19
NEW YORK STATE ELR - STONY BROOK UNIVERSITY MEDICAL CENTER		16	3	16%	19
MED HEALTH SERVICES		18	1	5%	19
INTEGRATED REGIONAL LABORATORIES - LARGO			19	100%	19
QUEST DIAGNOSTICS INC.			19	100%	19
SANFORD LABORATORIES		19			19
NEW PLANT CITY FAMILY CARE			19	100%	19
ADVENT HEALTH FISH MEMORIAL		2	16	89%	18

# COVID-19: testing by laboratory

Data through Jul 14, 2020 verified as of Jul 15, 2020 at 09:25 AM

Data in this report are provisional and subject to change.

The numbers in the table below represent the number for whom test results were received by the Department of Health. A person can be tested by more than one laboratory and can have both positive and negative results. **Therefore, the sum of the numbers in each column will be larger than the total number of people tested.**

Reporting lab	Inconclusive	Negative	Positive	Percent positive	Total
PATRICK AIR FORCE BASE		1	17	94%	18
ALLSOUTH URGENT CARE			18	100%	18
KENDALL REGIONAL MEDICAL CENTER LAB			18	100%	18
STONE WASH CLINICAL LABORATORIES		2	16	89%	18
BAYFRONT HEALTH BROOKSVILLE			18	100%	18
AMERICAN RESEARCH LABS		1	16	94%	17
WATSON CLINIC LLP SOUTH			17	100%	17
MIAMI VA HEALTHCARE SYSTEM			17	100%	17
CLEVELAND CLINIC FOUNDATION		9	8	47%	17
NEW YORK STATE ELR - CATHOLIC HEALTH SYSTEM DEPT LABORATORY		17			17
MACDILL AIRFORCE BASE MICRO		14	3	18%	17
325TH MEDICAL GROUP			16	100%	16
MY CLINICAL LAB			16	100%	16
LABORATORY SPECIALISTS OF MICHIGAN			16	100%	16
POPLAR HEALTHCARE PLLC	1	10	5	31%	16
VA		15	1	6%	16
ADVENTHEALTH CENTRA CARE OVIEDO		5	11	69%	16
LABCORP BIRMINGHAM		4	12	75%	16
ACCU REFERENCE MEDICAL LAB			16	100%	16
MADISON CORE LABORATORIES		15	1	6%	16
TGH		1	15	94%	16
ARUP		4	12	75%	16
VAMC GAINESVILLE		2	14	88%	16
MIAMI VAMC			16	100%	16
NEW YORK STATE ELR - BROOKDALE UNIVERSITY HOSPITAL		16			16
DIATHERIX		13	2	13%	15
MID-FLORIDA PATHOLOGY		7	8	53%	15
IPSUM DIAGNOSTICS			15	100%	15
INTERLAB		1	14	93%	15
CITRUS MEMORIAL HEALTH SYSTEM LAB		1	14	93%	15
FLORIDA DEPARTMENT OF HEALTH		10	5	33%	15
PALO ALTO VA MEDICAL CENTER		1	14	93%	15
QUESTDIAGNOSTICS INCORPORATED		1	14	93%	15
NXGEN MDX		11	4	27%	15
CORE DIAGNOSTIC LABORATORIES			14	100%	14
HEALTH FIRST-PALM BAY			14	100%	14
QUEST DIAGNOSTICS INCORPORATED			14	100%	14
GRAVITY DIAGNOSTICS		9	5	36%	14
PACIFIC ANALYTICS			14	100%	14
HEALTH CENTRAL HOSPITAL			14	100%	14
UNITED CLINICAL LABS			14	100%	14
PHYSICIANS REGIONAL HEALTHCARE SYSTEM			14	100%	14
TIDE LABORATORIES		4	10	71%	14
MILLENNIUM PHYSICIAN GROUP LCC			13	100%	13
GENPATH			13	100%	13
CAPE CANAVERAL HOSPITAL			13	100%	13
SEBASTIAN RIVER MEDICAL CENTER		6	7	54%	13

# COVID-19: testing by laboratory

Data through Jul 14, 2020 verified as of Jul 15, 2020 at 09:25 AM

Data in this report are provisional and subject to change.

The numbers in the table below represent the number for whom test results were received by the Department of Health. A person can be tested by more than one laboratory and can have both positive and negative results. **Therefore, the sum of the numbers in each column will be larger than the total number of people tested.**

Reporting lab	Inconclusive	Negative	Positive	Percent positive	Total
ST. JOSEPHS HOSPITAL			13	100%	13
NEW YORK STATE ELR - UNIVERSITY HOSPITAL, STONY BROOK SOUTHAMPTON		13			13
PRIVA PATH LABS			13	100%	13
QUEST DIAGNOSTICS NICHOLS INSTITUTE - SJC (LPP)		9	4	31%	13
CENTRA CARE CONWAY			13	100%	13
MEDCOMP SCIENCES			13	100%	13
ASSOCIATED CLINICAL LABORATORIES		13			13
XERA MED RESEARCH			13	100%	13
ADVANCED URGENT CARE		10	2	17%	12
TOTAL RENAL LABORATORIES INC		7	5	42%	12
SHORELINE PHYSICIAN GROUP			12	100%	12
BIO-REFERENCE LABORATORIES			12	100%	12
OUT OF STATE		12			12
WHITE WILSON MEDICAL CENTER CLINIC			12	100%	12
PROTEUS MOLECULAR AND CLINICAL LAB		8	4	33%	12
PARRISH MEDICAL CENTER		1	11	92%	12
LECONTE MEDICAL CENTER LAB		10	2	17%	12
NEW YORK STATE ELR - QUEST DIAGNOSTICS INCORPORATED		9	3	25%	12
SEVEN RIVERS REGIONAL MEDICAL CENTER		1	11	92%	12
NEW YORK STATE ELR - LENOX HILL HOSPITAL		11	1	8%	12
NEW YORK STATE ELR - WILSON MEMORIAL REGIONAL MEDICAL CENTER		12			12
FLORIDA DEPT OF HEALTH		4	8	67%	12
BROWARD DIALYSIS			12	100%	12
DOCTORS MEMORIAL HOSPITAL		6	5	45%	11
REFUAH HEALTH CENTER LABORATORY		11			11
UNIVERSITY HEALTH SYSTEM INC		11			11
MOFFITT CANCER CENTER		9	2	18%	11
ST FRANCIS HOSPITAL		8	3	27%	11
SUNQUEST		2	9	82%	11
AMERICAN ESOTERIC LABORATORIES			11	100%	11
LAB INTERMARKET FACILITY LAB			11	100%	11
FLORIDA COMMUNITY HEALTH CENTER OF ST. LUCIE			11	100%	11
BAY MEDICAL CENTER SACRED HEART HEALTH SYSTEM			11	100%	11
INDIAN RIVER MEDICAL CENTER		11			11
DOH		1	10	91%	11
DELRAY MEDICAL CENTER LAB			11	100%	11
GRAVITY DIAGNOSTICS, LLC		3	7	70%	10
PARKWEST MEDICAL CENTER		9	1	10%	10
BAYFRONT		8	2	20%	10
NEW JERSEY DEPARTMENT OF HEALTH COMMUNICABLE DISEASE SERVICE		3	7	70%	10
NEW YORK STATE ELR - ROCHESTER GENERAL HOSPITAL LABORATORY		9	1	10%	10
BROWARD HEALTH CARE			10	100%	10
BAPTIST SOUTH MEDICAL CENTER		2	8	80%	10
PARK WEST MEDICAL CENTER		10			10
JACKSON HEALTH SYSTEM			10	100%	10
LAKE BALDWIN CBOC		9	1	10%	10
MED ARBOR			10	100%	10



# COVID-19: testing by laboratory

Data through Jul 14, 2020 verified as of Jul 15, 2020 at 09:25 AM

Data in this report are provisional and subject to change.

The numbers in the table below represent the number for whom test results were received by the Department of Health. A person can be tested by more than one laboratory and can have both positive and negative results. **Therefore, the sum of the numbers in each column will be larger than the total number of people tested.**

Reporting lab	Inconclusive	Negative	Positive	Percent positive	Total
ESCAMBIA COMMUNITY CLINIC			10	100%	10
VIERA HOSPITAL			10	100%	10
LABCORP - MIAMI		4	6	60%	10
UVMC MICROBIOLOGY		9			9
ST. JOSEPH HOSPITAL LAB			9	100%	9
SELECT REFERENCE LABORATORIES, LLC			9	100%	9
LABCORP INC		1	8	89%	9
UPMC CHAUTAUQUA AT WCA LABORATORY		9			9
CLARITY LAB SOLUTIONS		3	6	67%	9
PALM BAY HOSPITAL		1	8	89%	9
NEW YORK STATE ELR - WESTCHESTER MEDICAL CENTER		9			9
BAPTIST CLAY			9	100%	9
MICHIGAN DEPARTMENT OF HEALTH AND HUMAN SERVICES			9	100%	9
LAB PLUS, LLC AT SAINT THOMAS WEST HOSPITAL		7	2	22%	9
FAST TRACK URGENT CARE CENTER			9	100%	9
VENICE REGIONAL MEDICAL CENTER			9	100%	9
ALL CHILDREN'S HOSPITAL/LAB			9	100%	9
USA HEALTH UNIVERSITY HOSPITAL CLINICAL LABORATORY		9			9
US BIOTEK LABORATORIES			9	100%	9
DIAGNOSTIC LABORATORY OF OKLAHOMA		9			9
CORE LABORATORY		1	8	89%	9
MINUTE CLINIC INCORPORATE		7	1	13%	8
LAB			8	100%	8
DEVANSH LAB WERKS INC		6	2	25%	8
BAYCARE OUTREACH LABORATORY SERVICES		1	7	88%	8
NEW YORK STATE ELR - QUEST DIAGNOSTICS NICHOLS		7	1	13%	8
LABCORP - CLEARWATER		3	5	63%	8
NORTH CAROLINA DEPARTMENT OF HEALTH & HUMAN SERVICES			8	100%	8
QUEST INFECTIOUS DISEASE	1	3	4	50%	8
MOLECULAR TESTING LABS			8	100%	8
EXPERTUS LABORATORIES INC		8			8
ST JOSEPHS HOSPITAL			8	100%	8
CONSOLIDATED LAB SERVICES		8			8
NORTH SHORE UNIVERSITY HOSPITAL LABORATORY		8			8
EAST ALABAMA MEDICAL CENTER LABORATORY		6	2	25%	8
THE COMMONWEALTH OF MASSACHUSETTS			8	100%	8
JACKSON NORTH MEDICAL CENTER		1	7	88%	8
GENEUS DIAGNOSTICS			8	100%	8
ST JOSEPH'S HEALTHLINE		1	7	88%	8
PATHGROUP LABS			8	100%	8
ST MARY'S MEDICAL CENTER		1	7	88%	8
MAYO CLINIC DEPT OF LAB MED PATHOLOGY			8	100%	8
BIO REFERNCE LABORATORIES		2	5	71%	7
SOUTHEAST ALABAMA MEDICAL CENTER			7	100%	7
CENTRA CARE - SAND LAKE			7	100%	7
PREMIER MEDICAL LABORATORY SERVICES			7	100%	7
WATSON CLINIC LLP MAIN			7	100%	7

# COVID-19: testing by laboratory

Data through Jul 14, 2020 verified as of Jul 15, 2020 at 09:25 AM

Data in this report are provisional and subject to change.

The numbers in the table below represent the number for whom test results were received by the Department of Health. A person can be tested by more than one laboratory and can have both positive and negative results. **Therefore, the sum of the numbers in each column will be larger than the total number of people tested.**

Reporting lab	Inconclusive	Negative	Positive	Percent positive	Total
LONGLEAF DIAGNOSTIC LABORATORIES		2	5	71%	7
HEALTH FIRST-VIERA HOSPITAL			7	100%	7
NEW YORK STATE ELR - CATHOLIC HEALTH SERVICES REGIONAL LABORATORY		5	2	29%	7
NORTH BAY HOSPITAL			7	100%	7
WESTPAC LABS			7	100%	7
CAYUGA MEDICAL CENTER AT ITHACA		6	1	14%	7
MACDILL AFB HOSPITAL		1	6	86%	7
NO NAME		5	2	29%	7
MICHIGAN DEPARTMENT OF COMMUNITY HEALTH		1	5	83%	6
WOLFSON CHILDREN'S HOSPITAL			6	100%	6
VENICE REGIONAL MEDICAL LAB SERVICES			6	100%	6
STATE LAB		1	5	83%	6
SMA LAB		3	3	50%	6
SACRED HEART HEALTH SYSTEM			6	100%	6
ST JOSEPH HOSPITAL		5	1	17%	6
CBS LABORATORY		1	5	83%	6
ST. JOSEPH'S HOSPITAL LAB			6	100%	6
FLORIDA DEPARTMENT OF HEALTH IN LAKE COUNTY		3	3	50%	6
HEALTHLINK DIAGNOSTIC LABORATORIES		1	5	83%	6
PRIDE DIAGNOSTICS		6			6
VAMC			6	100%	6
LEE COUNTY HEALTH DEPARTMENT		4	2	33%	6
PRATTVILLE BAPTIST HOSPITAL		5	1	17%	6
TRUE HEALTH DIAGNOSTICS		1	5	83%	6
AMERICAN HEALTH ASSOCIATES OF TAMPA			6	100%	6
NEW YORK STATE ELR - JAMES J PETERS VA MEDICAL CENTER		4	2	33%	6
DYNAMIC DNA LAB			6	100%	6
NORTHWELL HEALTH PLAINVIEW HOSPITAL LABORATORY		5	1	17%	6
ST VINCENTS MEDICAL CENTER RIVERSIDE NURSING			6	100%	6
FULGENT GENETICS		3	3	50%	6
PERSONALIZED GENETIC TESTING			6	100%	6
NEW YORK STATE ELR - JAMAICA HOSPITAL MEDICAL CENTER		6			6
DOCTOR'S IN HOUSE LAB			6	100%	6
NEW YORK STATE ELR - ERIE COUNTY MEDICAL CTR CLINICAL LABS		6			6
LEE MEMORIAL LAB GULF COAST			6	100%	6
ARCHBOLD MEMORIAL HOSPITAL/LAB		3	3	50%	6
CLINICAL RESEARCH SEQUENCING PLATFORM			6	100%	6
CLEVELAND CLINIC			6	100%	6
FRANCES WARDE MEDICAL LABORATORY		2	3	60%	5
PALM BEACH PATHOLOGY		4	1	20%	5
ST CATHERINE OF SIENA HOSPITAL		5			5
ST ANTHONY NORTH			5	100%	5
CONNECTICUT DEPARTMENT OF HEALTH		4	1	20%	5
HEALTH FIRST CAPE CANAVERAL HOSPITAL			5	100%	5
CHILDREN'S HOSPITAL OF PHILADELPHIA		5			5
DEPARTMENT OF VETERANS AFFAIRS MEDICAL CENTER			5	100%	5
DOH JACKSONVILLE CENTRAL LABORATORY		3	2	40%	5



# COVID-19: testing by laboratory

Data through Jul 14, 2020 verified as of Jul 15, 2020 at 09:25 AM

Data in this report are provisional and subject to change.

The numbers in the table below represent the number for whom test results were received by the Department of Health. A person can be tested by more than one laboratory and can have both positive and negative results. **Therefore, the sum of the numbers in each column will be larger than the total number of people tested.**

Reporting lab	Inconclusive	Negative	Positive	Percent positive	Total
SPECIALITY LABORATORIES,INC		4	1	20%	5
LABCORP BURLINGTON CYTO		4	1	20%	5
ST VINCENT'S EAST LABORATORY		5			5
ST ELIZABETH MEDICAL CENTER LABORATORY		5			5
JFK MEDICAL CENTER NORTH LAB			5	100%	5
NEW YORK STATE ELR - BRONX LEBANON HOSPITAL-MEDICAL CENTER		4	1	20%	5
NIGHT LITE PEDIATRICS URGENT CARE			5	100%	5
CANTON-POTSDAM HOSPITAL LABORATORY		5			5
ADVENTHEALTH CENTRA CARE ORMOND BEACH			5	100%	5
UPMC HEALTH SYSTEM		4	1	20%	5
HUNTINGTON HOSPITAL LABORATORY		4	1	20%	5
ADVENT HEALTH CENTRA CARE: WATERFORD LAKES			5	100%	5
NEW YORK STATE ELR - GOOD SAMARITAN HOSPITAL LABORATORY		5			5
PENSACOLA PEDIATRICS			5	100%	5
BIOTECH			5	100%	5
NEW YORK STATE ELR - LOURDES HOSPITAL INC		5			5
MEDICAL LABORATORY DIAGNOSTICS			5	100%	5
WUESTHOFF MEDICAL CENTER-MELBOURNE			5	100%	5
PATHOGENIUS LABORATORIES		2	3	60%	5
XRL SXF REF LAB		5			5
BROWARD COUNTY HEALTH DEPT.			5	100%	5
SOUTH SEMINOLE HOSPITAL		1	4	80%	5
BOCA RATON REGIONAL HOSPITAL LAB			5	100%	5
AEL KNOXVILLE			5	100%	5
BAY PINES VA		1	4	80%	5
NEW YORK STATE ELR - ST PETER'S BENDER LABORATORY		5			5
NEW YORK STATE ELR - SARATOGA HOSPITAL LABORATORY		5			5
NEW YORK PRESBYTERIAN - ALLEN HOSPITAL		5			5
CLINICAL PATHOLOGY LABORATORIES, INC.			5	100%	5
NEW YORK STATE ELR - VASSAR BROTHERS MEDICAL CENTER LABORATORY		5			5
GENESIS DIAGNOSTICS			5	100%	5
TAMIAMI LAB MILLENNIUM			5	100%	5
UNIVERSITY HOSPITAL - STONY BROOK EASTERN		5			5
THOMAS JEFFERSON UNIVERSITY HOSPITAL		4			4
COLORADO DEPARTMENT OF PUBLIC HEALTH AND ENVIRONMENT			4	100%	4
SOUTHEAST FAMILY HEALTHCARE CENTER			4	100%	4
BOCA BIOLISTICS REFERENCE LABORATORY			4	100%	4
PROMEDICA LABORITORIES		4			4
MAYO CLINIC LABS - ROCHESTER SUPERIOR DRIVE			4	100%	4
ARNOT OGDEN MEDICAL CENTER LABORATORY		4			4
Diatherix Laboratories, LLC		1	3	75%	4
NORTH OKALOOSA MEDICAL CENTER			4	100%	4
FINLAY C. LABORATORY		3	1	25%	4
LINCOLN MEDICAL AND MENTAL HEALTH CENTER		4			4
COMMUNITY HEALTH OF SOUTH FLORIDA			4	100%	4
MAGNOLIA DIAGNOSTIC			4	100%	4
TRUGENX			4	100%	4

# COVID-19: testing by laboratory

Data through Jul 14, 2020 verified as of Jul 15, 2020 at 09:25 AM

Data in this report are provisional and subject to change.

The numbers in the table below represent the number for whom test results were received by the Department of Health. A person can be tested by more than one laboratory and can have both positive and negative results. **Therefore, the sum of the numbers in each column will be larger than the total number of people tested.**

Reporting lab	Inconclusive	Negative	Positive	Percent positive	Total
SUNCOAST COMMUNITY HEALTH CENTERS PEDIATRICS			4	100%	4
ROCKLEDGE			4	100%	4
PRECISION LABS LLC		1	3	75%	4
BAYCARE LABORATORIES			4	100%	4
DAVITA LABORATORY		4			4
LABCORP - NAPLES			4	100%	4
OKLAHOMA STATE UNIVERSITY DIAGNOSTIC LAB			4	100%	4
UMHC/SYLVESTER AT KENDALL			4	100%	4
BROOKWOOD BAPTIST MEDICAL CENTER		4			4
THE CENTER FOR URGENT CARE		3	1	25%	4
BOND CLINIC			4	100%	4
MERCY HOSPITAL MIAMI LAB			4	100%	4
FLOWERS HOSPITAL		1	3	75%	4
THE VILLAGES CLINICAL LAB		4			4
NORTHWEST FLORIDA COMMUNITY HOSPITAL		1	3	75%	4
BIOFIRE			4	100%	4
INTERMARKET FACILITY			4	100%	4
LEHIGH VALLEY HOSPITAL		3	1	25%	4
LAKELAND REGIONAL HEALTH			4	100%	4
NEW YORK STATE ELR - HUDSON VALLEY HOSPITAL CENTER LABORATORY		3	1	25%	4
NEW YORK STATE ELR - BROOKLYN HOSPITAL CENTER DOWNTOWN CAMPUS		4			4
EXPRESS TESTING-ONE			4	100%	4
STATEN ISLAND UNIVERSITY HOSPITAL-POUCH		4			4
PEDIATRIC HEALTH CARE ALLIANCE			4	100%	4
DTR LABS		3	1	25%	4
QUEST DIAGNOSTICS- MELBOURNE			4	100%	4
MINUTECLINIC DIAGNOSTIC OF RHODE ISLAND, LLC #729		4			4
MISSOURI DEPARTMENT OF HEALTH AND SENIOR SERVICES			4	100%	4
STATEN ISLAND UNIVERSITY HOSPITAL		3			3
TYNDALL AFB			3	100%	3
PINELLAS COUNTY HEALTH DEPARTMENT		2	1	33%	3
POARCH BANC CREEK INDIANS TRIBAL HEALTH DEPARTMENT			3	100%	3
CENTRAL FLORIDA HEALTH CARE INC			3	100%	3
BAYFRONT HEALTH SPRING HILL			3	100%	3
NEW YORK STATE ELR - LABORATORY ALLIANCE OF CENTRAL NEW		3			3
NICHOLS INSTITUTE QUEST DIAGNOSTICS		2	1	33%	3
DCH REGIONAL MEDICAL CENTER LABORATORY		3			3
TAMPA GENERAL HOSPITAL LABORATORY			3	100%	3
OPTUM LABS LLC			3	100%	3
GENUS DIAGNOSTICS			3	100%	3
JACKSON SOUTH COMMUNITY HOSPITAL LAB			3	100%	3
TIMBER RIDGE LABORATORY			3	100%	3
BEAUMONT LABORATORY			3	100%	3
SELECT LABORATORIES MARION COUNTY, LLC.			3	100%	3
GULF COAST MOLECULAR LABORATORIES			3	100%	3
DOH-TAMPA BRANCH LABORATORY (MLK BLVD)			3	100%	3
GARCIA CLINICAL LABORATORY		1	2	67%	3

# COVID-19: testing by laboratory

Data through Jul 14, 2020 verified as of Jul 15, 2020 at 09:25 AM

Data in this report are provisional and subject to change.

The numbers in the table below represent the number for whom test results were received by the Department of Health. A person can be tested by more than one laboratory and can have both positive and negative results. **Therefore, the sum of the numbers in each column will be larger than the total number of people tested.**

Reporting lab	Inconclusive	Negative	Positive	Percent positive	Total
Cleveland Clinic Laboratories		1	2	67%	3
ASCENSION ST. VINCENT'S PRIMARY CARE			3	100%	3
MONTEFIORE NEW ROCHELLE HOSPITAL		3			3
AVELLINO LAB USA INC		3			3
BAYCARE OUTREACH LABORATORY HOSPITAL			3	100%	3
ILLINOIS DEPARTMENT OF PUBLIC HEALTH			3	100%	3
ABBOTT			3	100%	3
SAMARITAN MEDICAL CENTER		3			3
VIRTUA VOORHEES HOSPITAL		3			3
HEALTHMARK REGIONAL HOSPITAL LAB		1	2	67%	3
BAYONET POINT MEDICAL CENTER			3	100%	3
CLINICORE			3	100%	3
LAKE CITY VETERANS HOSPITAL			3	100%	3
NORTH BROWARD HOSPITAL DISTRICT HEALTHCARE FOR THE HOMELESS			3	100%	3
BAYFRONT HEALTH ER PINELLAS PARK		3			3
VIRGINIA DIVISION OF CONSOLIDATED LABORATORIES			3	100%	3
WAKEMED		1	2	67%	3
VA OUTPATIENT			3	100%	3
BARONESS ERLANGER HOSPITAL		3			3
ST LUKES HOSPITAL LABORATORY		2	1	33%	3
ANNE BATES LEACH EYE HOSPITAL/ ABLEH MICROBIOLOGY LABORATORY		2	1	33%	3
WINTER HAVEN HOSPITAL			3	100%	3
LAB CORP OF AMERICA		1	2	67%	3
PALMS WEST HOSPITAL			3	100%	3
BRANCH MEDICAL CLINIC			3	100%	3
EMERGENCY MEDICAL CENTER			3	100%	3
JOE DIMAGGIO CHILDREN'S HOSPITAL		1	2	67%	3
METHODIST MEDICAL CENTER		2	1	33%	3
MAYO MEDICAL LABORATORIES		2	1	33%	3
LAKE WALES MEDICAL CENTER INC			3	100%	3
PENNSYLVANIA DEPARTMENT OF HEALTH BUREAU OF LABORATORIES			3	100%	3
LABCORP DIAGNOSTICS-MIAMI		2	1	33%	3
NEW YORK STATE ELR - SOUTHSIDE HOSPITAL NORTHWELL HEALTH LABORATORY		2	1	33%	3
FLORIDA MEDICAL CLINIC			3	100%	3
KEY WEST URGENT CARE, INC		3			3
PUBLIC HEALTH LAB		3			3
QUEST DIAGNOSTIC			3	100%	3
FAMILY HEALTH CENTERS OF SWF LABS			3	100%	3
UNKNOWN LAB			3	100%	3
FLORIDA CLINICAL LAB			3	100%	3
INDIAN RIVER CHD VERO BEACH		2	1	33%	3
PECONIC BAY MEDICAL CENTER LABORATORY		2	1	33%	3
DOCTOR'S MEMORIAL HOSPITAL			3	100%	3
BAPTIST MEDICAL CENTER EAST		2	1	33%	3
ACH			3	100%	3
LEE MEMORIAL HEALTH PARK LAB			3	100%	3
FISHERMEN'S HOSPITAL			3	100%	3

# COVID-19: testing by laboratory

Data through Jul 14, 2020 verified as of Jul 15, 2020 at 09:25 AM

Data in this report are provisional and subject to change.

The numbers in the table below represent the number for whom test results were received by the Department of Health. A person can be tested by more than one laboratory and can have both positive and negative results. **Therefore, the sum of the numbers in each column will be larger than the total number of people tested.**

Reporting lab	Inconclusive	Negative	Positive	Percent positive	Total
ARCPPOINT LABS OF TAMPA			3	100%	3
SHELBY COUNTY HEALTH CARE CORPORATION		1	2	67%	3
UNIVERSITY HOSPITAL OF BROOKLYN		2			2
CALHOUN LIBERTY HOSPITAL			2	100%	2
WALGREENS #5317		2			2
MAYO			2	100%	2
TREASURE COAST COMMUNITY HEALTH			2	100%	2
PPD			2	100%	2
PREMIER LABORATORY SERVICES, LLC			2	100%	2
NEW YORK STATE ELR - LONG ISLAND JEWISH VALLEY STREAM		2			2
JOHN D. ARCHBOLD MEM. HOSPITAL			2	100%	2
OMNI			2	100%	2
COLLIER COUNTY HEALTH DEPT.			2	100%	2
VIRTUA MEMORIAL HOSPITAL BURLINGTON COUNTY			2	100%	2
NOVANT HEALTH INPATIENT CARE			2	100%	2
OHIO STATE UNIVERSITY WEXNER MEDICAL CENTER			2	100%	2
ALABAMA DEPARTMENT OF PUBLIC HEALTH			2	100%	2
Cleveland Clinic Weston			2	100%	2
MOLECULAR DIAGNOSTICS			2	100%	2
BAY CARE			2	100%	2
NEW HAMPSHIRE DEPARTMENT OF HEALTH AND HUMAN SERVICES		1	1	50%	2
NEW HAMPSHIRE PUBLIC HEALTH LABORATORIES		2			2
FCHC (OB)-DARWIN SQUARE CTR.			2	100%	2
UC CORAL GABLES			2	100%	2
MEMORIAL SLOAN KETTERING CANCER CENTER		1	1	50%	2
NEWYORK-PRESBYTERIAN/ LAWRENCE HOSPITAL LABORATORY		2			2
MARINER'S HOSPITAL			2	100%	2
KEY PRIMARY CASE			2	100%	2
UNIVERSITY HOSPITAL			2	100%	2
ST. JOSEPH REGIONAL MEDICAL CENTER			2	100%	2
MONTEFIORE ST LUKE'S CORNWALL HOSPITAL		2			2
LABCORP - STUART		1	1	50%	2
NEW YORK STATE ELR - JACOBI MEDICAL CENTER		2			2
MHHS All Lab Subsection		2			2
ALTRU DIAGNOSTICS INC			2	100%	2
NEW YORK STATE ELR - SAMARITAN HOSPITAL LABORATORY		2			2
HOME ACCESS HEALTH			2	100%	2
NAPHCARE, INC.			2	100%	2
QUEENS HOSPITAL CENTER		2			2
DALE MEDICAL CENTER		2			2
URGENT CARE TCMA			2	100%	2
GEORGIA DEPARTMENT OF PUBLIC HEALTH			2	100%	2
IRL MARKET LAB ALACHUA		1	1	50%	2
INTERNAL MEDICINE ASSOCIATES-DUNELLON			2	100%	2
GALEN BAYLOR EXTENSION		2			2
ADVENT HEALTH SEBRING			2	100%	2
DORAL URGENT CARE			2	100%	2

# COVID-19: testing by laboratory

Data through Jul 14, 2020 verified as of Jul 15, 2020 at 09:25 AM

Data in this report are provisional and subject to change.

The numbers in the table below represent the number for whom test results were received by the Department of Health. A person can be tested by more than one laboratory and can have both positive and negative results. **Therefore, the sum of the numbers in each column will be larger than the total number of people tested.**

Reporting lab	Inconclusive	Negative	Positive	Percent positive	Total
SIGNATURE CARE PFLUGERVILLE			2	100%	2
QUEST DIAGNOSITCS INCORPORATED			2	100%	2
BIO-TECH CLINICAL LABORATORIES			2	100%	2
QUEST DIAGNOSTICS-N ST PETERSBURG-5TH			2	100%	2
AHSE ROP		2			2
STATEN ISLAND UNIVERSITY HOSPITAL SEGUINE AVE		2			2
BIRMINGHAM VAMC		1	1	50%	2
NEW YORK STATE ELR - ORANGE REGIONAL MEDICAL CENTER LABORATORY		2			2
CORAL GABLES HOSPITAL			2	100%	2
MONTANA PUBLIC HEALTH LAB			2	100%	2
CONNECTDX			2	100%	2
AMEERAH LABS			2	100%	2
CLINICAL PATHOLOGY LABS		1	1	50%	2
LABCORP PHOENIX			2	100%	2
OHIO DEPARTMENT OF HEALTH LABORATORY		2			2
ACHS		2			2
AMERICAN FAMILY CARE- ORANGE BEACH			2	100%	2
FLORIDA WOMAN CARE LABORATORY			2	100%	2
CONEMAUGH MEMORIAL MEDICAL CENTER		2			2
GEISINGER MEDICAL CENTER		2			2
NORTHERN DUTCHESS HOSPITAL LABORATORY		2			2
SCDHEC BUREAU OF LABORATORIES			2	100%	2
NEW YORK STATE DEPARTMENT OF HEALTH		1	1	50%	2
NORTH FLORIDA/SOUTH GEORGA VETERANS HEALTH SYSTEM			2	100%	2
NEW YORK STATE ELR - AUBURN COMMUNITY HOSPITAL		2			2
ADVANCED MEDICAL CARE			2	100%	2
SSM HEALTH ST LOUIS MICROBIOLOGY LABORATORY		1	1	50%	2
IOWA DEPARTMENT OF PUBLIC HEALTH			2	100%	2
SHELBY BAPTIST MEDICAL CENTER			2	100%	2
OKLAHOMA STATE DEPARTMENT OF HEALTH-PUBLIC HEALTH LABORATORY			2	100%	2
BAYFRONT HEALTH PUNTA GORDA			2	100%	2
GUTHRIE MEDICAL GROUP LABORATORIES		2			2
JOHNSON CITY MEDICAL CENTER		1	1	50%	2
LABCORP RARITAN		2			2
PRECISION HEALTH SOLUTIONS LAB			2	100%	2
GENESIS LABORATORY MANAGEMENT			2	100%	2
MARSHALL MEDICAL CENTER SOUTH LAB		2			2
AMMON LABS			2	100%	2
ST. MARYS MEDICAL CENTER			2	100%	2
CELERION			2	100%	2
KETTERING HEALTH			2	100%	2
SARASOTA MEMORIAL MEDICAL URGENT CARE CENTER			2	100%	2
FLORIDA CLINICAL LABORATORY INC			2	100%	2
DEACONESS HOSPITAL			2	100%	2
ERIE COUNTY MEDICAL CTR CLINICAL LABS		2			2
LABCORP - OHIO			2	100%	2
FLORIDA DEPARTMENT OF HEALTH IN HILLSBOROUGH COUNTY			2	100%	2



# COVID-19: testing by laboratory

Data through Jul 14, 2020 verified as of Jul 15, 2020 at 09:25 AM

Data in this report are provisional and subject to change.

The numbers in the table below represent the number for whom test results were received by the Department of Health. A person can be tested by more than one laboratory and can have both positive and negative results. **Therefore, the sum of the numbers in each column will be larger than the total number of people tested.**

Reporting lab	Inconclusive	Negative	Positive	Percent positive	Total
GULF COAST MEDICAL GROUP			2	100%	2
MEDLOGIC, LLC		1	1	50%	2
BETH ISRAEL DEACONESS MEDICAL CENTER			2	100%	2
LEESBURG REGIONAL MEDICAL CENTER		1	1	50%	2
X-GENE MOLECULAR LABS			2	100%	2
MAGNOLIA ADULT, LLC			1	100%	1
WOODHULL MEDICAL AND MENTAL HEALTH CTR		1			1
KANSAS DEPARTMENT OF HEALTH			1	100%	1
UW HOSPITAL AND CLINICS			1	100%	1
BERKSHIRE MEDICAL CENTER			1	100%	1
LATE HOURS URGENT CARE			1	100%	1
AFFILIATED LABORATORIES INC			1	100%	1
WELLINGTON WEST 100176			1	100%	1
WEST VIRGINIA UNIVERSITY HOSPITALS			1	100%	1
VA HOSPITAL			1	100%	1
VA GREATER LOS ANGELES HEALTH CARE SYSTEM			1	100%	1
WASHINGTON STATE DEPARTMENT OF HEALTH PUBLIC HEALTH LABORATORIES			1	100%	1
VERMONT DEPARTMENT OF HEALTH LABORATORY		1			1
LABCORP-PORT ST.LUCIE		1			1
WOLFSON (USE BAPTIST)			1	100%	1
ADVENTIST HINSDALE HOSPITAL LABORATORY			1	100%	1
KEYS MEDICAL GROUP			1	100%	1
LAB CORP PHOENIX			1	100%	1
AMD			1	100%	1
UNIVERSITY LAB			1	100%	1
YORK HOSPITAL - LABORATORY			1	100%	1
WEST PACIFIC MEDICAL LABORATORY			1	100%	1
UNIVERSITY OF MIAMI			1	100%	1
UNIVERSITY OF KANSAS MEDICAL CENTER			1	100%	1
UNIVERSITY OF FLORIDA			1	100%	1
UNK			1	100%	1
UT MEMPHIS UNIVERSITY HEALTH SERVICES			1	100%	1
COLORADO DEPARTMENT OF HEALTH LABORATORY SERVICES DIVISION			1	100%	1
COASTAL LABORATORIES			1	100%	1
SACRED HEART MEDICAL GROUP			1	100%	1
JRS LABORATORY			1	100%	1
ST. JOSEPH'S HOSPITAL NORTH			1	100%	1
ST JOSEPHS CHILDRENS HOSPITAL OUTREACH			1	100%	1
TEN HEALTHCARE			1	100%	1
UF KANAPAHA LAB BEAKER		1			1
THOMAS LANGLEY			1	100%	1
THE UNIVERSITY OF VERMONT MEDICAL CENTER		1			1
OHIO DEPARTMENT OF HEALTH			1	100%	1
ORMOND BEACH CENTRA CARE			1	100%	1
CQUENTIA NGS, LLC			1	100%	1
EXCEL URGENT CARE OF NJ			1	100%	1
DOCS URGENT CARE			1	100%	1

# COVID-19: testing by laboratory

Data through Jul 14, 2020 verified as of Jul 15, 2020 at 09:25 AM

Data in this report are provisional and subject to change.

The numbers in the table below represent the number for whom test results were received by the Department of Health. A person can be tested by more than one laboratory and can have both positive and negative results. **Therefore, the sum of the numbers in each column will be larger than the total number of people tested.**

Reporting lab	Inconclusive	Negative	Positive	Percent positive	Total
NEW YORK STATE ELR - NEW YORK CITY DEPARTMENT OF HEALTH & MENTAL		1			1
NEW YORK STATE ELR - COLUMBIA MEMORIAL HOSPITAL LABORATORY		1			1
PARKWAY REGIONAL MEDICAL CENTER LAB			1	100%	1
HEALTH NETWORK LABORATORIES		1			1
COMPUNET CLINICAL LAB			1	100%	1
VALLEY HOSPITAL MEDICAL CENTER		1			1
VIDANT MEDICAL CENTER			1	100%	1
WILMINGTON VA MEDICAL CENTER			1	100%	1
VITAE DIAGNOSTICS			1	100%	1
Viracor Eurofins			1	100%	1
SANFORD SOUTH UNIVERSITY		1			1
DSI LABORATORIES-NAPLES-7TH			1	100%	1
EDGAR PRICE FAMILY & CHILDREN HEALTHCARE CENTER			1	100%	1
FLORIDA HEALTH CARE PLANS			1	100%	1
UC SAN DIEGO HEALTH			1	100%	1
NORTH BROWARD MEDICAL CENTER			1	100%	1
SUNY AT STONY BROOK			1	100%	1
BARDMOOR LABORATORY			1	100%	1
US LABORATORIES			1	100%	1
MIDMICHIGAN MEDICAL CENTER			1	100%	1
HIGHLANDS CLINICAL LABORATORY			1	100%	1
VRL EUROFINS			1	100%	1
HEART OF FLORIDA HMA			1	100%	1
NAVAL BRANCH MEDICAL CLINIC			1	100%	1
FLORIDA HOSPITAL KISSIMMEE			1	100%	1
ATLANTIS URGENT CARE			1	100%	1
BAPTIST ER TOWN CTR			1	100%	1
QUEST DIAGNOSTICS-OCALA-SE 3RD		1			1
ST. LUCIE COUNTY HEALTH DEPARTMENT		1			1
SPARROW CENTRAL LAB			1	100%	1
AZALEA HEALTH			1	100%	1
REMISE OCCUPATIONAL HEALTH SOLUTIONS INC			1	100%	1
REGIONAL MEDICAL LABORATORY			1	100%	1
QUEST DIAGNOSTIC INC TECHNICAL			1	100%	1
ST. LUKE'S HOSPITAL - BETHLEHEM CAMPUS		1			1
PEDIATRIC ASSOCIATES - JACKSONVILLE			1	100%	1
NOT GIVEN			1	100%	1
PHELPS HOSPITAL LABORATORY		1			1
PREMIER MEDICAL LABORATORY			1	100%	1
CAROLINAS HEALTHCARE SYSTEM LAB			1	100%	1
CBC LAB			1	100%	1
BMC/JACSONVILLE		1			1
JEFFERSON COUNTY HEALTH DEPARTMENT-MONTICELLO		1			1
RIVERSIDE METHODIST HOSPITAL LAB			1	100%	1
KETTERING MEDICAL CENTER			1	100%	1
PHYSICIANS STAT			1	100%	1
PIEDMONT HOSPITAL LAB			1	100%	1



# COVID-19: testing by laboratory

Data through Jul 14, 2020 verified as of Jul 15, 2020 at 09:25 AM

Data in this report are provisional and subject to change.

The numbers in the table below represent the number for whom test results were received by the Department of Health. A person can be tested by more than one laboratory and can have both positive and negative results. **Therefore, the sum of the numbers in each column will be larger than the total number of people tested.**

Reporting lab	Inconclusive	Negative	Positive	Percent positive	Total
SHARP MEMORIAL HOSPITAL MICROBIOLOGY DEPT			1	100%	1
DALLAS MEDICAL CENTER			1	100%	1
WILLIAM A HINTON STATE LABORATORY INSTITUTE			1	100%	1
TUFTS MEDICAL CENTER			1	100%	1
HANCOCK REGIONAL HOSPITAL		1			1
ST VINCENT'S CHILTON		1			1
URGENT CARE WEST CLINIC			1	100%	1
BAYCARE OUTREACH LAB			1	100%	1
BLOOD SYSTEMS LABORATORIES			1	100%	1
TIEHH BIOTERRORISM RESPONSE LAB			1	100%	1
UNITED CLINICAL LABORATORIES			1	100%	1
BAYCARE ALLIANT HOSPITAL			1	100%	1
ACCESS HEALTH CARE PHYSICIANS			1	100%	1
PEACHEALTH LABORATORIES		1			1
AFC URGENT CARE			1	100%	1
MISSOURI DEPARTMENT OF HEALTH AND SENIOR SERVICES - STATE PH LAB		1			1
AMERICAN MEDICAL LABORATORIES			1	100%	1
INTERMOUNTAIN CENTRAL LAB			1	100%	1
QUEST - HOUSTON LAB			1	100%	1
PRISMA HEALTH TUOMEY LABORATORY			1	100%	1
PERDIDO URGENT CARE			1	100%	1
PHAROS HEALTH			1	100%	1
HOUSTON HEALTH DEPARTMENT - BUREAU OF LABORATORY SERVICES			1	100%	1
FORT SANDERS REGIONAL LABORATORY		1			1
SOUTHWEST REGIONAL PCR LABORATORY			1	100%	1
REDITUS LABORATORIES			1	100%	1
HOLY NAME MEDICAL CENTER		1			1
HARDIN MEMORIAL HOSPITAL - HEARTLAND PATHOLOGY CONSULTANTS			1	100%	1
AIM LABORATORIES			1	100%	1
LAKEVIEW REGIONAL HOSPITAL			1	100%	1
BIODORON LABORATORIES			1	100%	1
CHATSWORTH ASSISTED LIVING COMMUNITY AT PGA NATIONAL			1	100%	1
MIAMI CANCER INSTITUTE			1	100%	1
NORTH CAROLINA STATE LABORATORY OF PUBLIC HEALTH, SPECTRUM LAB NETWORK			1	100%	1
LABCORP - ORLANDO		1			1
PEDIATRIC HEALTHCARE ALLIANCE			1	100%	1
LABCORP KANSAS CITY			1	100%	1
NORTH RIVER FAMILY HEALTH CENTER			1	100%	1
NORTHSHORE UNIVERSITY HEALTHSYSTEM EVANSTON HOSPITAL LAB			1	100%	1
THE HEART HOSPITAL BAYLOR PLANO			1	100%	1
MHS LAB		1			1
MANATEE PEDIATRICS			1	100%	1
BAPTIST HEALTH MEDICAL CENTER			1	100%	1
LABCORP-CRYSTAL RIVER			1	100%	1
Lourdes Hospital			1	100%	1
MEDICAL CLINIC OF HOUSTON			1	100%	1
MINUTECLINIC DIAGNOSTIC			1	100%	1

# COVID-19: testing by laboratory

Data through Jul 14, 2020 verified as of Jul 15, 2020 at 09:25 AM

Data in this report are provisional and subject to change.

The numbers in the table below represent the number for whom test results were received by the Department of Health. A person can be tested by more than one laboratory and can have both positive and negative results. **Therefore, the sum of the numbers in each column will be larger than the total number of people tested.**

Reporting lab	Inconclusive	Negative	Positive	Percent positive	Total
MONROE COUNTY HOSPITAL		1			1
MEDICAL CENTER ENTERPRISE			1	100%	1
MEDSTAR HARBOR HOSPITAL			1	100%	1
MEMORIAL HERMANN CONSOLIDATED LABORATORY SERVICES			1	100%	1
GENETRAIT LABORATORIES			1	100%	1
CHARLOTTE CHD PORT CHARLOTTE		1			1
FLORIDA HOSPITAL			1	100%	1
DOCTORS CLINICAL LABORATORY, INC			1	100%	1
COMMONWEALTH OF MASSACHUSETTS			1	100%	1
GRAND VIEW HOSPITAL			1	100%	1
BEAUMONT HOSPITAL, GROSSE POINTE			1	100%	1
BEAUFORT MEMORIAL			1	100%	1
INTERMOUNTAIN MEDICAL CENTER			1	100%	1
HEALTH FIRST IBM-UX			1	100%	1
INDIAN RIVER CLINICAL LABORATORY, INC.		1			1
DELAWARE DIAGNOSTICS LABS			1	100%	1
SOUTHEAST GEORGIA HEALTH SYSTEM			1	100%	1
SKY RIDGE MEDICAL CENTER - MICRO			1	100%	1
ROBERT WOOD JOHNSON HOSPITAL			1	100%	1
FLORIDA CLINICAL LABORATORY - BIOREFERENCE LABORATORIES			1	100%	1
ST FRANCIS			1	100%	1
BLOUNT MEMORIAL HOSPITAL		1			1
TEXAS DEPARTMENT OF STATE HEALTH SERVICES			1	100%	1
CATHOLIC HEALTH SYSTEM DEPT LABORATORY		1			1
State Lab Unspecifd			1	100%	1
CONEY ISLAND HOSPITAL		1			1
LEGACY LABORATORY			1	100%	1
LAKEWOOD RANCH ER 24/7			1	100%	1
MARION COUNTY HEALTH DEPARTMENT			1	100%	1
MONTEFIORE NYACK HOSPITAL AFFILIATED LABORATORY		1			1
MUNSON MEDICAL CENTER			1	100%	1
JOHNS HOPKINS MEDICAL LABS			1	100%	1
FLORIDA DEPARTMENT OF HEALTH PALM BEACH COUNTY			1	100%	1
RIVIERA BEACH HEALTH CENTER LAB			1	100%	1
PRORENATA LABS			1	100%	1
HIGHLANDS MEDICAL CENTER		1			1
GIFFORD MEMORIAL HOSPITAL		1			1
ST CHARLES HOSPITAL LABORATORY		1			1
UNIVERSITY OF MISSOURI HEALTH CARE			1	100%	1
UTMB PATHOLOGY CLINICAL SERVICES LABORATORY			1	100%	1
UNITED HEALTHCARE			1	100%	1
TRINITAS REGIONAL MEDICAL CENTER			1	100%	1
MEMORIAL HEALTH UNIVERSITY MEDICAL CENTER			1	100%	1
MD NOW URGENT CARE CENTER INC.			1	100%	1
WELLNOW URGENT CARE		1			1
MARINA DEL REY HOSPITAL LAB			1	100%	1
WATAUGA MEDICAL CENTER			1	100%	1

# COVID-19: testing by laboratory

Data through Jul 14, 2020 verified as of Jul 15, 2020 at 09:25 AM

Data in this report are provisional and subject to change.

The numbers in the table below represent the number for whom test results were received by the Department of Health. A person can be tested by more than one laboratory and can have both positive and negative results. **Therefore, the sum of the numbers in each column will be larger than the total number of people tested.**

Reporting lab	Inconclusive	Negative	Positive	Percent positive	Total
MARYLAND DEPARTMENT OF HEALTH AND MENTAL HYGIENE			1	100%	1
VIRACOR			1	100%	1
APS-SUMMIT CARE PHARMACY, LLC DBA OMNICARE		1			1
SCIENCE CARE			1	100%	1
RIVERVIEW REGIONAL MEDICAL CENTER		1			1
QUEST ELR		1			1
RDX BIOSCIENCE,			1	100%	1
SHANDS AT LAKE SHORE LAB			1	100%	1
TALLAHASSEE MEMORIAL HOSPITAL/MICROBIOLOGY LAB			1	100%	1
TANNER MEDICAL CENTER EAST AL		1			1
ACCESS HEALTH CARE			1	100%	1
SOUTH GEORGIA MEDICAL CENTER			1	100%	1
ACCESSLAB		1			1
SONIC REFERENCE LABORATORY			1	100%	1
SPRING HILL REGIONAL HOSPITAL			1	100%	1
SMITH KLINE			1	100%	1
JOHN HOPKINS MEDICAL LABORATORIES		1			1
SCIONLAB SERVICES LLC			1	100%	1
FALMOUTH BY THE SEA			1	100%	1
THE CHILDREN'S HOSPITAL OF PHILADELPHIA		1			1
CLEVELAND CLINIC OHIO LABORATORIES			1	100%	1
DHEC - S.C PUBLIC HEALTH LAB			1	100%	1
DUKE HEALTH REGIONAL HOSPITAL			1	100%	1
SUNY UPSTATE MEDICAL UNIVERSITY			1	100%	1
NEW YORK STATE ELR - MONTEFIORE MEDICAL CENTER LABORATORIES - WEILER			1	100%	1
NEW YORK STATE ELR - NEW YORK PRESBYTERIAN-LOWER MANHATTAN		1			1
LABCORP LAFAYETTE		1			1
XPRESS WELLNESS URGENT CARE			1	100%	1
LEGACY LABORATORY SERVICES			1	100%	1
LABCORP - HOLLYWOOD			1	100%	1
OHIO STATE UNIVERSITY MEDICAL CENTER			1	100%	1
ONEIDA HEALTHCARE CENTER		1			1
JOHNS HOPKINS MEDICAL LABORATORIES			1	100%	1
NORTHSIDE HOSPITAL DULUTH			1	100%	1
NORTHWEST FL COMM HOSP			1	100%	1
BAY CARE LAB SERVICES/ST. ANTHONY'S HOSPITAL			1	100%	1
ARNOLD PALMER HOSPITAL LABORATORY			1	100%	1
ALVERNO CLINICAL LABORATORIES			1	100%	1
MID FLORIDA CLINICAL LABORATORY			1	100%	1
MALABAR/ADVENT CENTRA CARE			1	100%	1
BAYCARE MEDICAL GROUP			1	100%	1
ALLIANCE LABS @LRMC			1	100%	1
LOYOLA UNIVERSITY MEDICAL CENTER LABORATORY			1	100%	1
NEW YORK STATE ELR - GLENS FALLS HOSPITAL DEPARTMENT OF PATHOLOGY		1			1
NEW YORK STATE ELR - BELLEVUE HOSPITAL CENTER DEPARTMENT		1			1
NAVAL HOSPITAL OF JACKSONVILLE			1	100%	1
MONTANA DEPARTMENT OF PUBLIC HEALTH & HUMAN SERVICES			1	100%	1

# COVID-19: testing by laboratory

Data through Jul 14, 2020 verified as of Jul 15, 2020 at 09:25 AM

Data in this report are provisional and subject to change.

The numbers in the table below represent the number for whom test results were received by the Department of Health. A person can be tested by more than one laboratory and can have both positive and negative results. **Therefore, the sum of the numbers in each column will be larger than the total number of people tested.**

Reporting lab	Inconclusive	Negative	Positive	Percent positive	Total
CFCH - FROSTPROOF			1	100%	1
CENTRA CARE – WATERFORD LAKES			1	100%	1
Covance Central Laboratory			1	100%	1
FLORIDA HOSPITAL ALTAMONTE			1	100%	1
ST. MARY MEDICAL CENTER		1			1
UCLA HEALTHCARE CLINICAL LABS			1	100%	1
WUESTHOFF MEMORIAL HOSPITAL			1	100%	1
BAYFRONT HEALTH PORT CHARLOTTE			1	100%	1
CALIFORNIA PUBLIC HEALTH LABORATORY			1	100%	1
CELEBRATION HOSPITAL			1	100%	1
WARD MEMORIAL HOSPITAL		1			1
DICKERT			1	100%	1
UAB			1	100%	1
TIMPANOGOS REGIONAL HOSPITAL			1	100%	1
TAMIAMI LAB MILLENIUM			1	100%	1
TAMPA		1			1
Mt Sinai Aventura			1	100%	1
BAYCARE MEDICAL GROUP INC			1	100%	1
PROGENESIS INC			1	100%	1
BOZEMAN HEALTH DEACONESS HOSPITAL		1			1
CENTRA CARE HUNTER'S CREEK			1	100%	1
CAROMONT HEALTH			1	100%	1
NORTH NAPLES HOSPITAL RESPIRATORY THERAPY DEPARTMENT			1	100%	1
ONSLOW MEMORIAL HOSPITAL LABORATORY		1			1
LABCORP - LEESBURG			1	100%	1
LEESBURG FAMILY MEDICINE		1			1
LABCORP HOUSTON			1	100%	1
HELIX DIAGNOSTICS			1	100%	1
ECLRS			1	100%	1
STANLY REGIONAL MEDICAL CENTER			1	100%	1
SENTARA NORFOLK GENERAL HOSPITAL CENTRAL LAB			1	100%	1
HAWAII DEPARTMENT OF HEALTH LAB			1	100%	1
SANFORD REGIONAL HOSPITAL WORTHINGTON		1			1
<b>Total</b>	<b>9,290</b>	<b>3,019,257</b>	<b>376,345</b>	<b>11%</b>	<b>3,404,892</b>