



SY 2021-22 Operations and Instruction Update

October 19, 2021

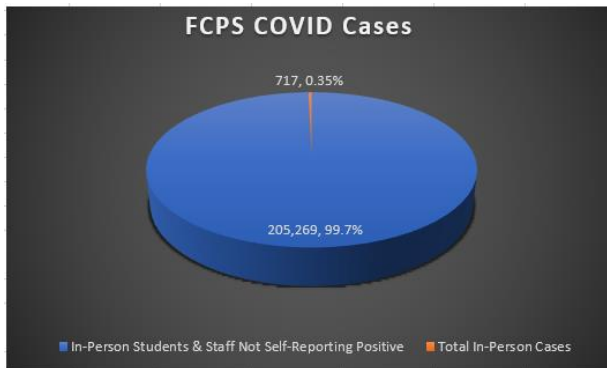
RETURNING STRONG

FCPS COVID Data: September 16–October 14

Total Positive Cases: **717**

Percentage of Positive Cases: **0.35%**

Case Type	Number of Positive Cases	% Positive In-Person
Students	567	0.32%
Staff	147	0.53%
Visitors	3	-
Total	717	0.35%
Epi-linked (18 outbreaks)*	39	0.02%
Student Athletes	20	0.27%
Athletics Staff	3	0.44%
SACC- Students	12	-



Total In-Person Students	178,339
Total Staff	27,772
Students and staff count as of 10/12/21	

Epi-linked: A case in which the patient has/had contact with one or more persons who have/had the disease, and transmission of the agent by the usual modes of transmission is plausible.

***School Outbreak (Updated definition):** Multiple cases comprising of at least 10% of students, teachers, or staff within a specified core group* OR at least three (3) within a specified core group* meeting criteria for a school-associated COVID-19 case; with symptom onset or positive test result within 14 days of each other, AND NO likely known epidemiologic link to a case outside of the school setting.

Impact of COVID-19 on FCPS: September 16–October 14

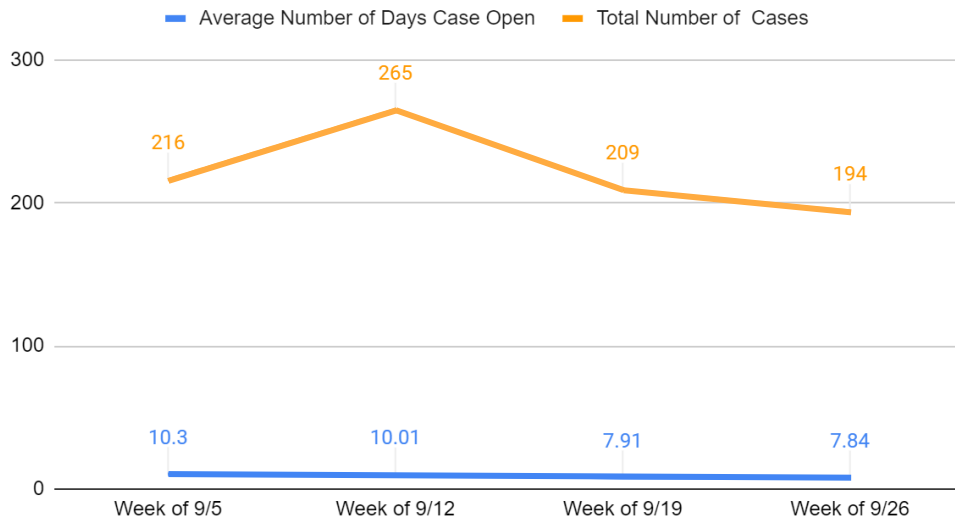
School Level	Pause (Potential Close Contact)		Quarantine (Close Contact)		Isolation (COVID-19 Positive Individual)		
	Students	Staff	Students	Staff	Students	Staff	Visitor
Elementary	1029	247	2030	55	402	75	3
Middle	217	40	204	14	39	12	0
Secondary/High/ Non-Traditional	707	67	391	17	126	32	0
Other (Offices)	-	-	-	11	-	28	0
Total	1953	354	2625	97	567	147	3
Percent of In-Person Individuals	(1.09%)	(1.27%)	(1.47%)	(0.35%)	(0.32%)	(0.53%)	N/A

Note: The data for pause, quarantine, and isolation is not mutually exclusive

September Average COVID-19 Case Length

Number of Days Case was Open	Cases Week of 9/5-9/11	Cases Week of 9/12-9/18	Cases Week of 9/19-9/25	Cases Week of 9/26-10/2
0	2	1	7	1
1	1	3	15	2
2	1	2	11	6
3	2	4	6	8
4	7	3	11	3
5	9	8	1	5
6	9	12	9	24
7	11	22	7	27
8	9	18	22	14
9	11	24	19	60
10	10	23	43	27
11	17	21	34	13
12	99	78	17	4
13	26	44	7	0
14	2	2	0	0
20	0	0	0	0
Average Number of Days Case Was Open	10.30	10.02	7.90	7.84

Total Cases and Average Weekly Case Length



Vaccination Planning

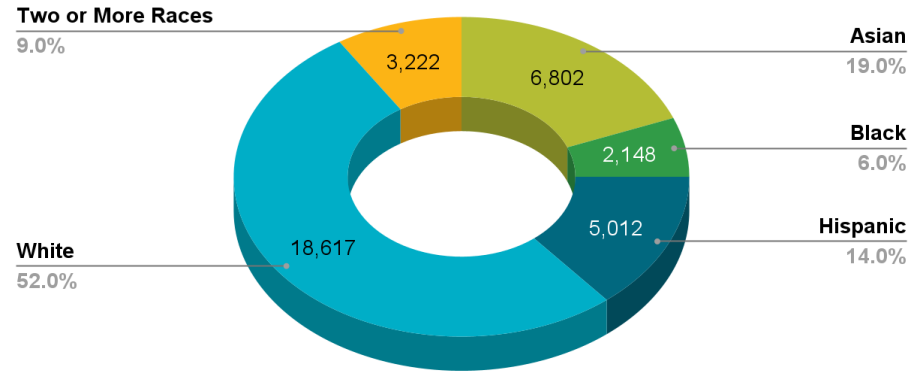
for Students Age 5–11



Division-Wide Survey Response Data

- Survey sent in preparation for the upcoming availability of COVID-19 vaccinations for children age 5–11
- Information sought to determine what supports, if any, families need to access vaccinations for their children
- 85,302 surveys sent to families who, as of November 1, will have students between the ages of 5 to 11
- 35,801 responses (36% response rate)

Vaccination Survey Respondents Demographics



Division-Wide Survey Results*

Intent to vaccinate

- 76% plan to vaccinate their child
- 80% plan to vaccinate their child immediately
- 12% are undecided about their child's vaccination plans
- 10% do not plan to vaccinate their child

Challenges

- 45% indicated wait time for vaccination appointments was a challenge
- 44% indicated no challenges

School-based Clinics

- 49% would not consider having their child vaccinated during the school day without a parent/guardian present
- 35% would consider having their child vaccinated during the school day without a parent/guardian present

Vaccination Preference

- Child's (family) doctor—highest preference
- School-based clinics w/o parents/guardians—lowest preference

*35,801 responses (36% response rate)



Collective Effort to Support COVID-19 Vaccinations

Fairfax County Health Department



- **Multiple mass vaccination clinics**
 - Government Center
 - South County Government Center
 - Tysons Community Vaccination Center
- Pop-up clinics at school sites in the evening and/or weekends
- School-based clinics during the school day

Fairfax County Public Schools

- Facilities to support school-based clinics evenings, weekends, and during the school day
- **Transportation support for families to access mass vaccination clinics**
- Supervision and emotional support for students at school-based clinics during the school day



Virginia Chapter of the American Academy of Pediatrics

- Over 20 practices (representing more than 200 pediatricians) self identified as serving children in Fairfax County surveyed
- **More than 80% of these practices plan on vaccinating in some capacity**; Collective estimate of 3,900 vaccines per week

Virginia Chapter

American Academy of Pediatrics

DEDICATED TO THE HEALTH OF ALL CHILDREN®



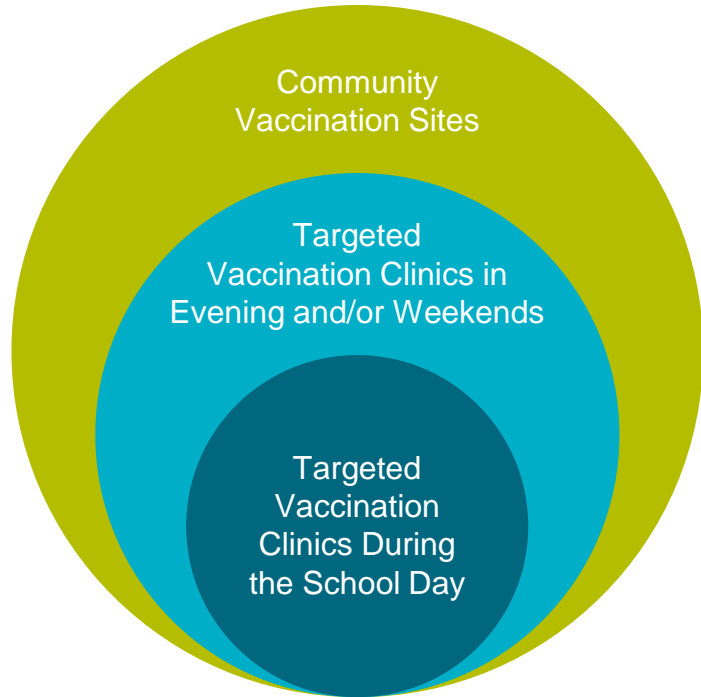
INOVA

- **Weekend pediatric vaccination clinics at the Inova Center for Personalized Health (ICPH)** (500 shots per day by appointment)
- Inova Cares Clinic for Children & Families (Underserved communities by appointment)
- Informational packets and videos on vaccination for families (available in multiple languages)



Note: This plan reflects current planning and is subject to change as situation evolves.

Multiple Opportunities to Support Different Needs



1. Community Vaccination Sites (Immediately once available)

- Local Community Vaccination Options
 - Medical homes (child's medical provider which can include pediatrician, family medicine doctor, nurse practitioner, physician assistant)
 - Local pharmacies
 - Local health department offices and designated locations
- Mass Vaccination Clinics—community-located mass vaccination clinics
 - Tysons Corner Location
 - Fairfax Government Center
 - South County Government Center
- Inova Center for Personalized Health (weekends)

2. Targeted Vaccination Clinics in Evening and/or Weekends (Mid-November)

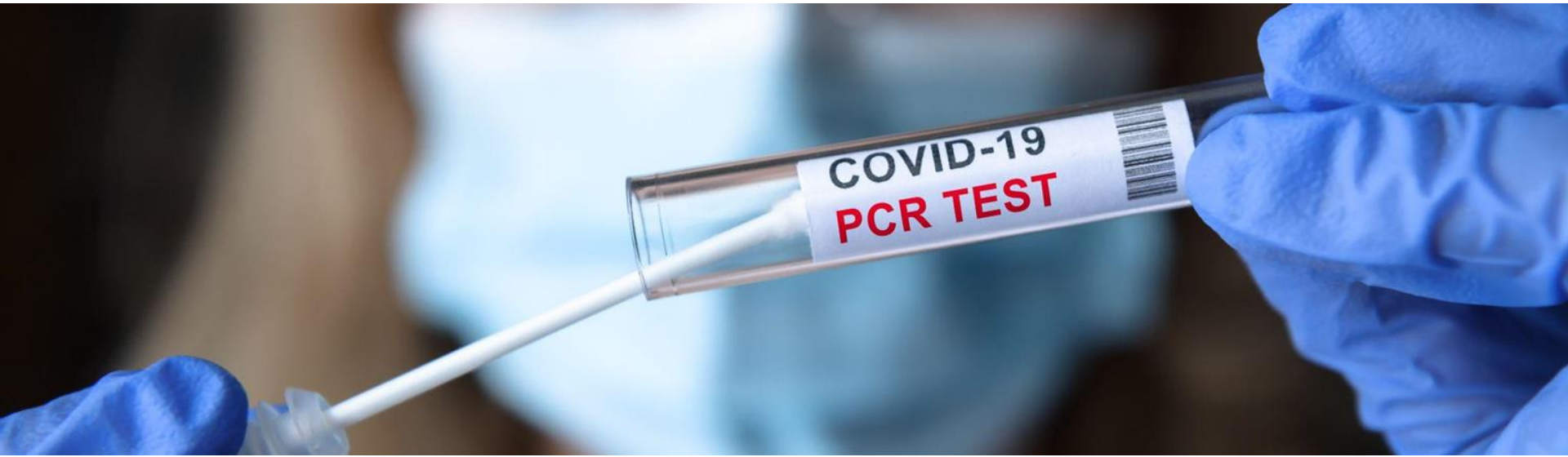
- Parent/guardian presence is required
- Evening and/or weekend clinics based in schools to accommodate parent presence during vaccination and reduce transportation barriers

3. Targeted Vaccination Clinics During the School Day (After winter break)

- Parent consent provided in advance for participation
- Clinic during the school day without parent/guardian presence to reduce access and transportation barriers

Note: This plan reflects current planning and is subject to change as situation evolves.

COVID-19 Testing



Types of COVID-19 Testing

Screening testing is intended to identify unvaccinated people with COVID-19 who are **asymptomatic and do not have known, suspected, or reported exposure to COVID-19**. Screening helps to identify unknown cases so that measures can be taken to prevent further transmission.

Examples of screening include testing:

- Employees in a workplace setting
- Students, faculty, and staff in a school setting
- A person before or after travel
- Someone at home who does not have symptoms associated with COVID-19 and no known exposures to someone with COVID-19

Diagnostic testing is intended to identify current infection in individuals and should be performed on **anyone that has signs and symptoms consistent with COVID-19**.

Examples of diagnostic testing include:

- Testing anyone with symptoms consistent with COVID-19
- Testing vaccinated and unvaccinated people who were exposed to someone with a confirmed or suspected case of COVID-19

CDC Guidance for Screening Testing in K–12 Schools

- Offer screening tests for students who are not fully vaccinated once per week during moderate, substantial, and high community transmission.
- Conduct screening testing at least once per week for high-risk sports and extracurricular activities (those that cannot be done outdoors or with masks) at all community transmission levels.
- Provide weekly screening testing for teachers and staff who are not fully vaccinated at all community transmission levels.

<https://www.cdc.gov/coronavirus/2019-ncov/community/schools-childcare/k-12-guidance.html#screening-testing>

Overview of Screening Testing Provided by Third Party Provider

	Students	Student Athletes	Staff
Participants	<p>A random sample of students who are NOT fully vaccinated will be identified each week for testing.</p> <p>Sample size will be at least 10% of students who are not fully vaccinated at each school site.</p> <p>Requires parental consent.</p>	<p>All active VHSL student athletes ages 12-15 who are NOT fully vaccinated and ages 16 and older who have medical or religious exemptions will be tested at least once per week.</p> <p>Requires parental consent.</p>	<p>All FCPS staff who have NOT provided documentation of being fully vaccinated will be tested weekly.</p>
Test Type	PCR Test	<p>Rapid Antigen Test</p> <p><i>Note: Confirmatory PCR Tests will be provided for positive rapid tests</i></p>	<p>Rapid Antigen Test</p> <p><i>Note: Confirmatory PCR Tests will be provided for positive rapid tests</i></p>
Testing Sites	Testing will occur at the school during the school day.	Testing will occur at the high school after school hours (to the maximum extent possible).	Testing will occur at 9 designated sites, separate from school testing, with variable hours between 7am-7pm Monday-Saturday.
Estimated Participation Rates	Based on data at this time, approximately 11,000–12,000 students will be tested weekly.	Based on data at this time, approximately 2,000 student athletes will be tested weekly.	Based on data at this time, approximately 3,000 staff will be tested weekly.

Optional Screening Testing for Students Not Fully Vaccinated: Identification Process

Example One:

ABC Elementary School

- 500 Students Enrolled
 - 100% Not Full Vaccinated
 - 10% of Not Fully Vaccinated Students= 50 (*target goal for weekly screening*)
-

300 parents provide consent for screening

50 of those 300 students would be pulled randomly each week for testing

Example Two:

XYZ Elementary School

- 500 Students Enrolled
 - 100% Not Full Vaccinated
 - 10% of Not Fully Vaccinated Students= 50 (*target goal for weekly screening*)
-

20 parents provide consent for screening

All 20 students would be tested weekly

Optional Screening Testing for Students Not Fully Vaccinated

Registration and Consent

- Parents/guardians will be provided a link to register their child to participate in testing and/or other services and provide the requisite consent
- Participation in testing for students (excluding VHSL student athletes) **is optional**
- Only students with parental consent will be tested



Staggered Student Testing Implementation

- Week of **November 8th**: Begin **elementary student** testing
- Week of **November 15th**: Begin **middle, high, and center student** testing



Testing Sites

- All schools and centers on a rotating schedule

Required Screening Testing for Student Athletes Not Fully Vaccinated

- Begins the week of November 1st
- Testing at all traditional high school sites (after school to the maximum extent possible)
- All 12–15 year old student athletes who are not fully vaccinated will be tested every week
- All 16 + students athletes who have a medical or religious waiver will be tested every week
- Parental consent is required



Required Testing for Staff Not Fully Vaccinated

Vaccine Survey Results

- 92% response rate for contracted employees (as of 10/15/21)
 - 97% vaccinated

Testing Sites

- Nine sites: Sideburn Center, South County SS, Gatehouse Center, Stonecroft Center, Lewis HS, Mount Vernon HS, South Lakes SS, McLean HS, Holmes MS
- Monday–Saturday
- Variable hours from 7:00 am–7:00 pm

Staff to be Tested

- Contracted employees—Begin November 1
- Hourly employees currently working (substitutes, coaches, other)—Begin November 15



Other Services Coming Soon Through Third Party Provider

- COVID-19 Diagnostic Testing (Students* and Staff)
- COVID-19 Vaccinations*
- School Entrance Vaccinations*

*Parental Consent Required



Inclement Weather Day Approach



- **First 5 inclement weather days** will be traditional inclement weather days.
- Following that, FCPS will utilize flexibility provided by General Assembly to have unscheduled virtual learning days, wherever possible.

DSS Position to Support Student Health

10/7/2021 Approved Board Motion:

I move to direct the Superintendent to establish a staff position in the Department of Special Services to support the Assistant Superintendent in managing public health related work in the school division using ESSER III funds.



School Board Questions and Discussion





RETURNING STRONG