



Lexile and Quantile Hub Tour

Jane Scott, Senior Educational Facilitator

jscott@lexile.com

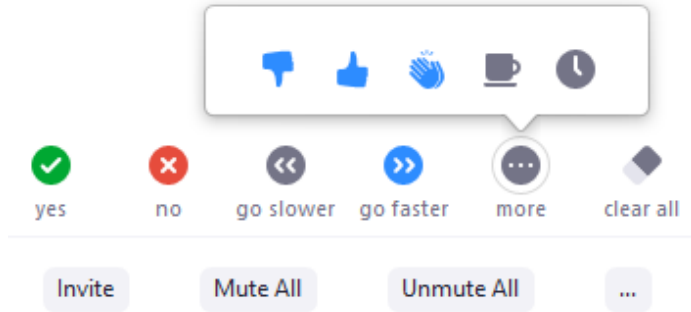
Matt Copeland, Director of Educator Engagement

mcopeland@lexile.com



Housekeeping:

Grab chocolate, get comfy,
Feel free to use the Zoom tools:



Due to the possibility of a large group joining today, please chat questions and remain muted.



The Lexile and Quantile Hub~

- After a brief overview of where you can locate the measures and what they mean, we will sign into the Hub and explore the FREE tools.

The screenshot displays the Lexile and Quantile Hub website. The header is blue with the text "LEXILE & QUANTILE TOOLS". Below the header, there's a navigation bar with links: "All Tools", "Profile", "Change Password", "Making Lists", and "Membership Plan". A prominent banner in the center reads "CHECK OUT THE NEW GROWTH PLANNER! NOW FEATURING REGIONAL JOB DATA" and "LEXILE QUANTILE GROWTH PLANNER". The main content area is divided into two sections: "LEXILE TOOLS" and "QUANTILE TOOLS". Each section contains a grid of tool cards. The Lexile Tools section includes: "Find a Book", "Lexile® Grade Level Charts", "Analyzer", "Growth Planner", "Lexile® Career Database", "Wordlists", and "Lexile® Measures Manager". The Quantile Tools section includes: "Summer Math Challenge", "Teacher Assistant", "Quantile® Grade Level Charts", "Math@Home", "Math Skills Database", "Growth Planner", and "Quantile® Career Database". A sidebar on the left contains a "Menu" with the Indiana Department of Education logo and a list of tools: "Lexile® Tools" (Find a Book, Grade Level Charts, Analyzer, Growth Planner, Career Database, WordLists, Measures Manager) and "Quantile® Tools" (Summer Math Challenge, Teacher Assistant, Grade Level Charts, Math@Home, Math Skills Database, Growth Planner, Career Database, Measures Manager, Find Your Lesson). At the bottom of the sidebar, there's a "Membership Options" section with a "Support" link and two circular icons.

Menu <<

Indiana Department of Education
Lexile & Quantile Hub

Lexile® Tools

- Find a Book
- Grade Level Charts
- Analyzer
- Growth Planner
- Career Database
- WordLists
- Measures Manager

Quantile® Tools

- Summer Math Challenge
- Teacher Assistant
- Grade Level Charts
- Math@Home
- Math Skills Database
- Growth Planner
- Career Database
- Measures Manager
- Find Your Lesson

See All Tools

Membership Options

Support

LEXILE & QUANTILE TOOLS

All Tools Profile Change Password Making Lists Membership Plan

CHECK OUT THE NEW GROWTH PLANNER!
NOW FEATURING REGIONAL JOB DATA

LEXILE QUANTILE
GROWTH PLANNER

LEXILE TOOLS

All Tools

Find a Book
For Educators, Parents and Students
Search for books by grade, interest and reading complexity. View a book's most challenging words and create a personal booklist that can be shared with others.

Lexile® Grade Level Charts
For Educators and Parents
View and print student Lexile measures by grade level. Filter your view by grade(s), time of year, and student population percentiles.

Analyzer
For Educators
Paste or type in text to receive a Lexile range. View text characteristics along with challenging words and their definitions.

Growth Planner
For Educators, Parents and Students
Use Lexile measures to determine if a student is on track to graduate college-and-career ready. Access national and regional career data.

Lexile® Career Database
For Educators
Identify the reading demands needed for a desired career and use it to inform goal setting. The Lexile measure is the only metric available to compare and describe the reading demands of a career.

Wordlists
For Educators
Download lists of important words by grade and domain, including math, science, social studies and general, that students are likely to encounter in textbooks and other learning materials.

Lexile® Measures Manager
For Educators
Determine a student's optimal reading measure when multiple assessments that produce Lexile measures have produced significant and unexpected differences.

QUANTILE TOOLS

Summer Math Challenge
For Educators and Parents
Keep math skills sharp with the Summer Math Challenge. This free program is six weeks of math activities for 1st - 8th grade students.

Teacher Assistant
For Educators
Differentiate student instruction based on an individual or classroom's Quantile measure. This tool organizes each state's standards into Knowledge Clusters and aligns them to the Quantile Framework.

Quantile® Grade Level Charts
For Educators and Parents
View and print student Quantile measures by grade level. Filter your view by grade(s), time of year, and student population percentiles.

Math@Home
For Parents and Students
Support classroom instruction at home by accessing free math resources that are tailored to a student's individual state, grade, mathematical topic and Quantile measure. Resources include activities, online games, tutorial videos, and worksheets.

Math Skills Database
For Educators
Discover individual Quantile Skills & Concepts (GSCC) and the Quantile measures of each state standard. Get a detailed view of the Knowledge Clusters and the interconnectedness of GSCCs. Access free resources aligned to GSCCs, state standards, and Quantile measure.

Growth Planner
For Educators, Parents and Students
Use Quantile measures to determine if a student is on track to graduate college-and-career ready. Access national and regional career data.

Quantile® Career Database
For Educators
Identify the math demands needed for a desired career and use it to inform goal setting. The Quantile measure is the only metric available to compare and describe the mathematical demands of a career.

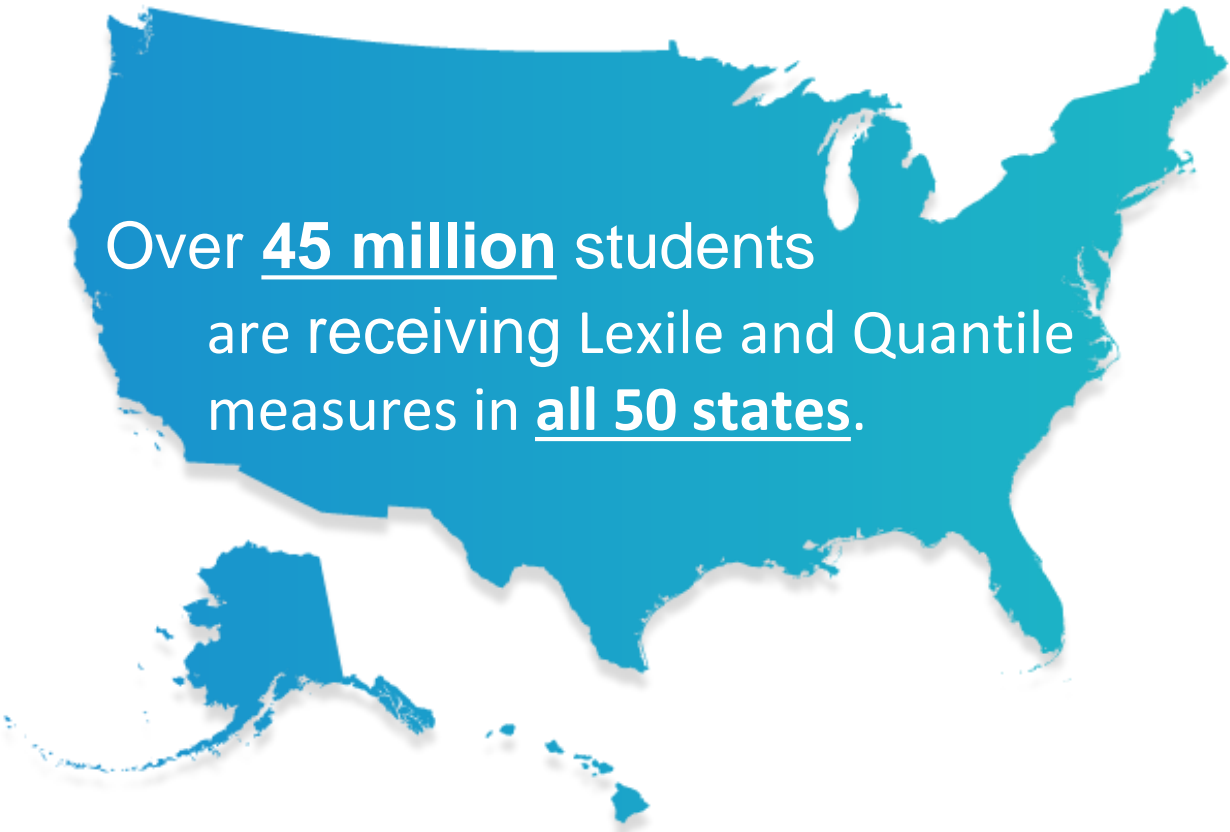


The Lexile Framework for Reading and the Quantile Framework for Mathematics *are linked to:*

- State Assessments
- Norm-Referenced Assessments
- Formative Assessments
- Reading and Math Programs



The Big Picture



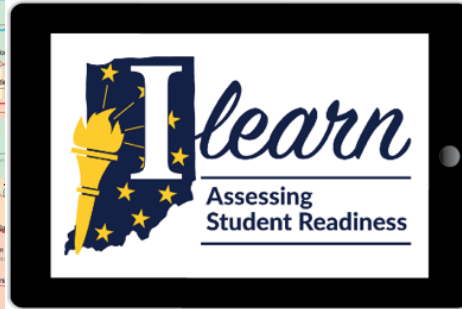
Over 45 million students
are receiving Lexile and Quantile
measures in all 50 states.





In 2020-2021
school year...

Students in grades
3-8 will
receive a
Lexile
and
Quantile measure
on ILEARN



Information for parents:

<https://www.doe.in.gov/assessment/ilearn-families>

Indiana
DEPARTMENT OF EDUCATION

ASSESSMENT / LEXILE OVERVIEW

ATTENTION: The Indiana Department of Education announced the cancellation of the upcoming Spring 2020 assessment windows. Please review this [memo](#) for more information.

Lexile Overview

Posted: Mon, 09/24/2018 - 12:58pm Updated: Mon, 04/20/2020 - 1:06pm

The Lexile Framework® for Reading

The Lexile Framework for Reading (Lexile Framework) measures a student's reading ability on the Lexile scale, which represents a position on the Lexile scale. When used together, Lexile measures and text are at an ideal difficulty to spur reading growth and to help students understand the right difficulty level. These measures help parents and schools understand a student's reading ability and the right difficulty level.

What is a Lexile measure?

There are two Lexile measures: the Lexile reader measure and the Lexile text measure. The Lexile reader measure represents a student's reading ability on the Lexile scale, which represents a position on the Lexile scale. When used together, Lexile measures and text are at an ideal difficulty to spur reading growth and to help students understand the right difficulty level. These measures help parents and schools understand a student's reading ability and the right difficulty level.

Indiana
DEPARTMENT OF EDUCATION

PROGRAMS DIRECTORY EVENTS

ASSESSMENT / QUANTILE OVERVIEW

ATTENTION: The Indiana Department of Education announced the cancellation of the upcoming Spring 2020 assessment windows. Please review this [memo](#) for more information.

Quantile Overview

Posted: Mon, 09/24/2018 - 1:06pm Updated: Fri, 03/27/2020 - 9:23am

The Quantile Framework® for Mathematics

The Quantile Framework for Mathematics (Quantile Framework®) measures a student's readiness to learn mathematics concepts and skills and matches it to math content.

What is a Quantile® Measure?

The Quantile Framework® consists of a Quantile measure and the Quantile scale. A Quantile measure represents the difficulty of a mathematical skill, concept or application and a student's understanding of these mathematical skills and concepts. Quantile measures are expressed as numeric measures followed by a "Q" (for example, 850Q), and represent a position on the Quantile scale.

The Quantile Framework spans the developmental continuum from Kindergarten mathematics through the content typically taught in Algebra II, Geometry, Trigonometry, and Pre-calculus, from below 0Q (Emerging Mathematician) to above 1600Q.

Quantile measures take the guesswork out of determining which mathematical skills a developing mathematician

Indiana Department of Education
is updating their website.
Information on
Lexiles and Quantiles
could be relocated.

Please contact: Kelly Connelly
(kconnelly@doe.in.gov)
if you have questions.

I LEARN Score Report

Dear Parent/Guardian,

This report provides information about your child's performance on the Indiana's I LEARN assessment. I LEARN is the summative accountability assessment for Indiana students to measure student growth and proficiency in English/Language Arts, Mathematics, Science, and Social Studies according to the Indiana Academic Standards.

Please read this report closely and discuss the results with your child and his/her teacher. Thank you for supporting your child's education.

Jennifer McCormick
Dr. Jennifer McCormick
State Superintendent of Public Instruction

INFORMATION ON INDIANA'S I LEARN ASSESSMENT

I LEARN is Indiana's new online computer-adaptive assessment designed to measure your child's proficiency based on the Indiana Academic Standards. Overall student results in I LEARN are reported as four-digit scale scores. The overall scale scores for Indiana students align with the four proficiency levels (Below Proficiency, Approaching Proficiency, At Proficiency, and Above Proficiency). The report provides your family with useful information, including the following: how your child scored on the assessment, whether the scores meet state proficiency standards, and how your child's scores compare with students in his/her school, corporation, and state.

UNDERSTANDING THE I LEARN ASSESSMENT

Individual Student Report

How did my student perform on the test?

Test: I LEARN English/Language Arts Grade 5

Year: Spring 2019

Name: Demo, Student A.

Basic test information

Name	STN	Scale Score	Proficiency Level	Reported Lexile® Measure	College and Career Readiness Indicator
Demo, Student A.	999999001	2710	Above Proficiency	700L	Yes

Scale Score: Represents your child's overall numerical score placed on an alternative scale rather than just using percent correct or a raw score.

Proficiency Level: Indicates which proficiency level your child is placed into based on the overall scale scores.

Reported Lexile® Measure (English/Language Arts only): Represents your child's reading ability, and serves as a guide in selecting books for your child.

Reported Quantile® Measure (Mathematics only): Represents your child's mathematical skills, and helps you identify activities to support your child in gaining mathematical skills and understanding.

College and Career Readiness Indicator: Indicates whether your child meets the college-and-career readiness standards.

Proficiency at readiness.
Your child's test times. His/her score range as an estimation of your child's ability.

Proficiency at readiness.

The comparison scores table shows how your child's scale score compares with peers at the school, corporation, and state levels.

The reporting category performance table shows your child's performance across domains within a content area. Reporting category performance is reported as Below (●), At/Near (■), or Above (▲).

Bar charts indicate how your child performed. The black bar shows the expectation by domain. The green band shows the range of performance expected over time typically associated with the assessment's small measurement error.

English/Language Arts reports include descriptions of your child's performance on the Performance Task (i.e., writing portion). If a condition code appears, your child's response could not be scored. Unscorable responses include responses that are blank, insufficient, written in a non-scorable language, off-topic, off-purpose, or illegible.

ADDITIONAL RESOURCES

- To understand more about your child's proficiency level, go to www.doe.in.gov/assessment/learn-families
- To practice questions similar to what your child has seen on I LEARN, go to www.doe.in.gov/assessment/learn-sample-items-and-scoring

For more information about this assessment, go to www.doe.in.gov/assessment/learn

For more information about Lexile® Measures, go to www.doe.in.gov/assessment/lexile-measures-indiana

Students can also receive LEXILE student measures from numerous partner products

Over 65 popular reading assessments & programs, including 16 state assessments, report Lexile measures.



Students can also receive QUANTILE student measures from numerous partner products

Over 19 popular math assessments & programs, including
14 state assessments, report Quantile measures.

aimsweb

Mc
Graw
Hill CTB
McGraw-Hill

ERB

fueleducation™
the new power of learning

i-Ready®

nwea
map®

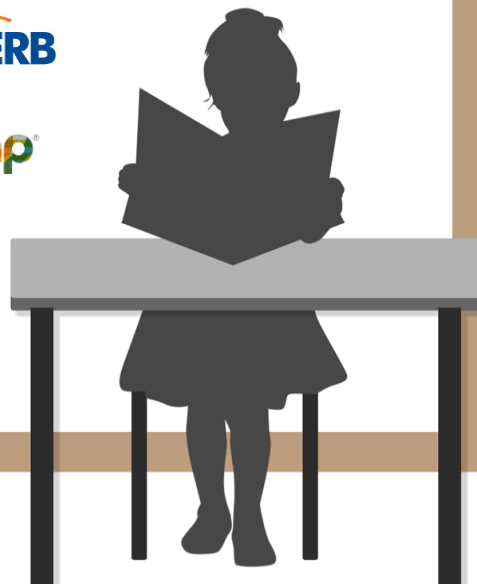
T T M
Think Through Math

Math
Inventory™

Istation

THE
IOWA TESTS®
Measurement You Can Trust™
Innovation You Can Use

VOYAGER SOPRIS
LEARNING™



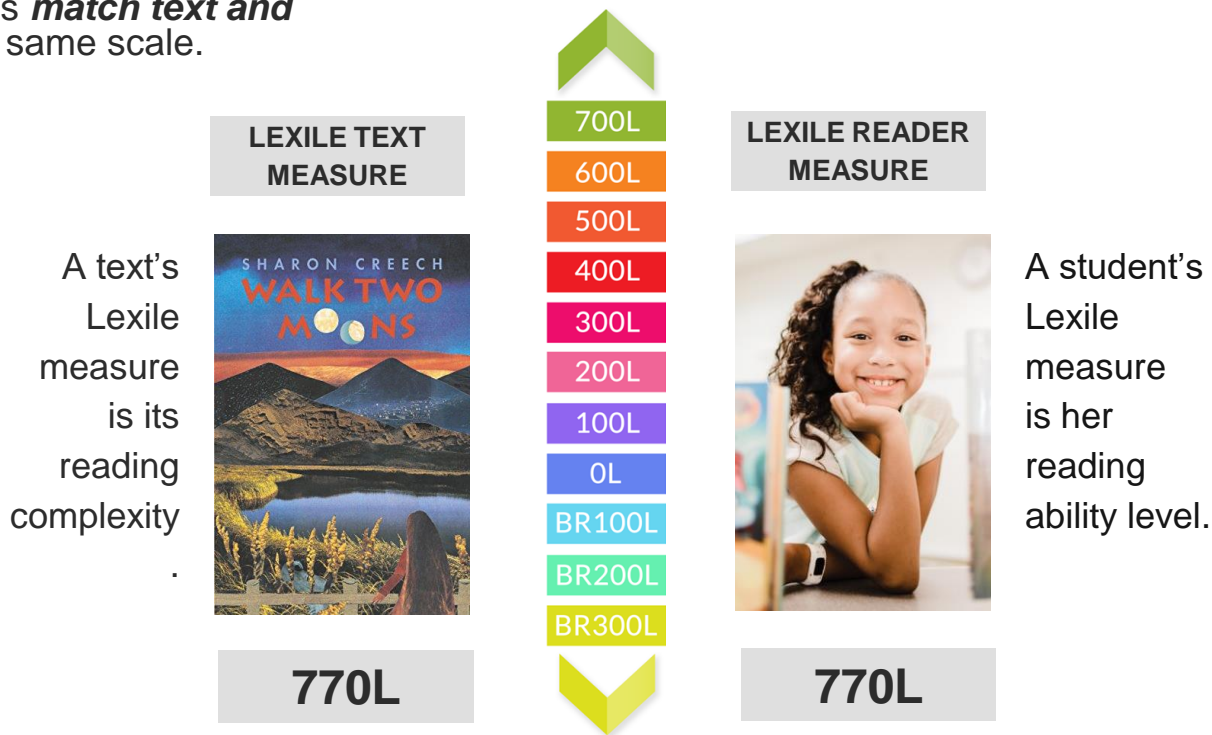
THE LEXILE METRIC...

Two types of Lexile measures



Text complexity and Student reading ability on the same scale

Lexile measures *match text and readers* on the same scale.



Text Characteristics that Influence Complexity

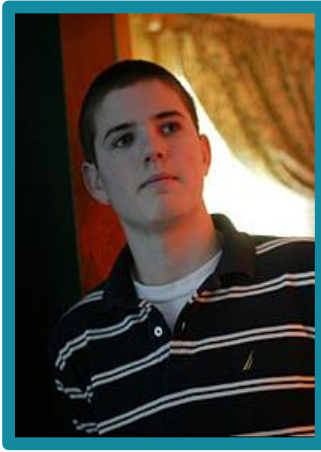
Syntactic Complexity

- The number of words per sentence
- Longer sentences are more complex and require more short-term memory to process

Semantic Difficulty

- The frequency with which words appear in MetaMetrics' Corpus of written text (which currently contains over 1.4 billion words)
- Less familiar words impede reading fluency and affect comprehension





Reader Level

John's Lexile
reported on an
assessment is
940L

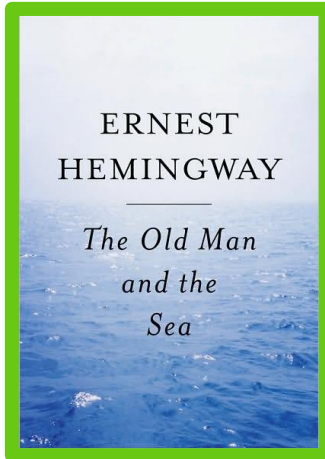
Lexile Range:
840L-990L

Text Readability

***The Old Man
and the Sea***

has a
Lexile text measure of
940L

= 75%
Comprehension
*(Independent reading
measure of a student)*



THE QUANTILE METRIC...

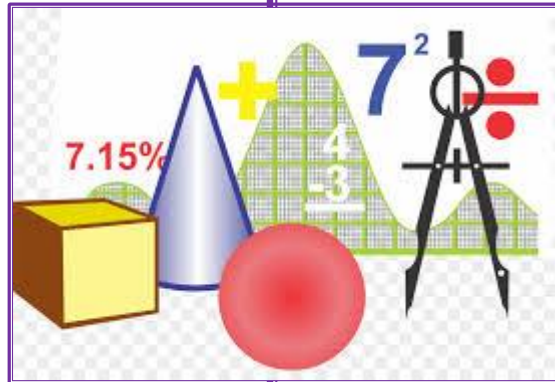
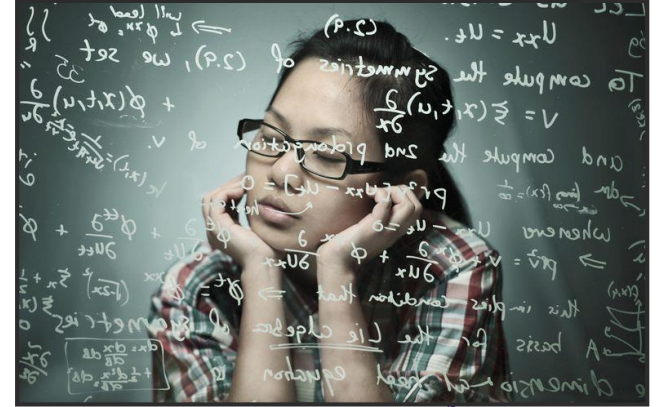
TWO TYPES OF QUANTILE MEASURES

Two Kinds of Quantile Measures

Student Quantile Measure

A student Quantile helps you to know:

- Which skills and concepts a child is ready to learn.
- The level of success a child is expected to have with an upcoming skill or concept.
- How a child is growing in mathematics on a single scale across grade levels.



Quantile Measure for QSCs

(Quantiles Skills and Concepts)

When applied to mathematical skills and concepts, Quantile Measures indicate the task difficulty associated with a skill or concept relative to other mathematical skills and concepts.

Quantile Framework

Quantile measures *match math readiness and complexity* on the same scale.

A student's Quantile measure
is her *readiness for math instruction*

QUANTILE STUDENT
MEASURE



840Q



700Q

600Q

500Q

400Q

300Q

200Q

100Q

0Q

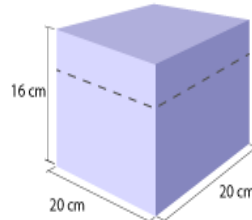
EM100Q

EM200Q

EM300Q

QUANTILE LESSON
MEASURE

a. Amy has a fish tank shaped like a rectangular prism that is 20cm by 20cm.
What is the volume of the tank?



b. If Amy only fills the tank $\frac{3}{4}$ of the way, what will be the volume of the water in the tank?

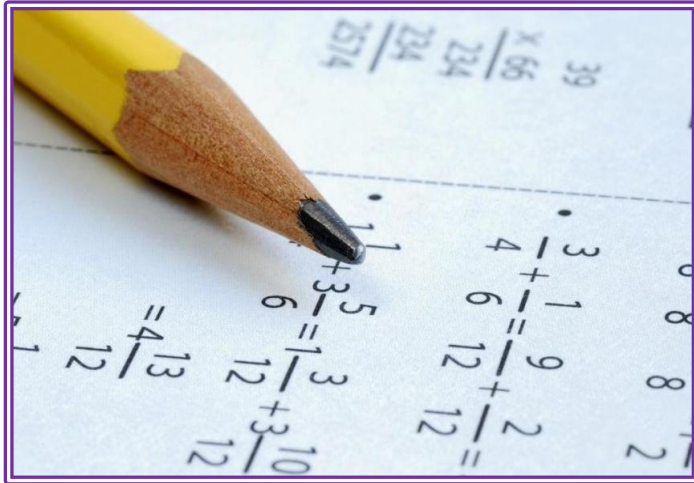
840Q

A Quantile measure
of material
is its *math complexity*.



How Are Lexile & Quantile Scales Similar?

- Developmental scales
- Measure student and resource (book/math concept or skill) on the same scale
- Personalize instruction



If you missed Wednesday, July 15th and Friday, July 17th ...

The Lexile 101 and Quantile 101 sessions were both recorded. These recordings along with each PPT used during the presentations, were shared with

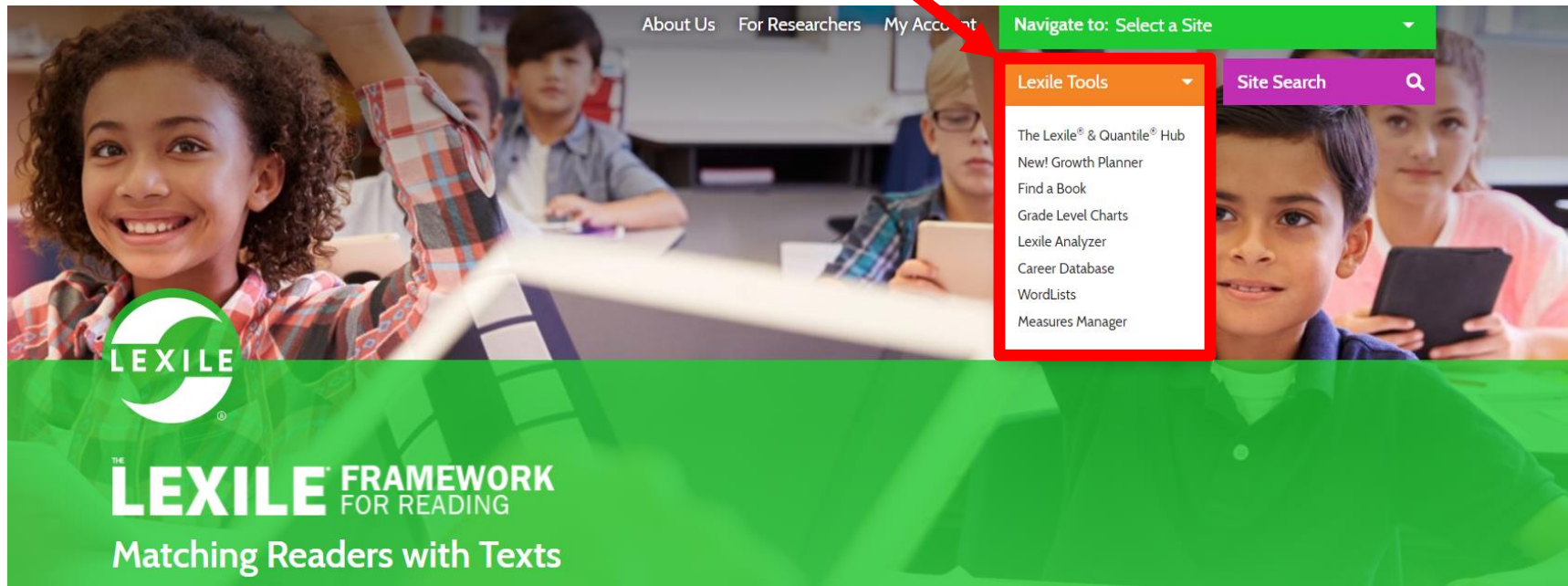
Kelly Connelly, Senior Assessment Program Specialist
Indiana Department of Public Instruction

Access the HUB in Two Ways:

Go to: <https://hub.lexile.com/>

Or go to: <https://lexile.com/>

Once you have arrived at the Hub, please let us know by selecting “yes” in the Zoom tools.



Suggestions & Reminders when Registering an Account on the Hub

- Use **Google Chrome** or **Mozilla Firefox**
- Use a **laptop, desktop**, or other device with a large screen
- If using an autofill feature within your browser to complete forms, you may want to **turn off (temporarily) or clear your autofill data**
- Provide your **school email address** when registering (personal addresses--gmail, hotmail, etc.--will not grant you free Premium membership)
- Spell out the name of your state** Be sure to identify your role as “Educator”
- Check your email inbox** for a confirmation email from the Hub



Register:

Menu <<

LEXILE & QUANTILE TOOLS

Register

Sign In

QUICK LINKS ★

Lexile® Tools

Find a Book

Analyzer

WordLists

Quantile® Tools

Math Skills Database

Teacher Assistant

Math@Home

[See All Tools](#)

[Membership Options](#)

[Support](#)

LEXILE

QUANTILE

All Tools

Have questions? Want answers?

Check out the NEW Quick Start Guides and Tutorials.

LEXILE TOOLS

All Tools

Find a Book

For Educators, Parents and Students

Search for books by grade, interest and reading complexity. View a book's most challenging words and create personal booklists that can be shared with others.

SAVE TO QUICK LINKS

Analyzer

For Educators

Paste or type in text to receive a lexile range. View text characteristics along with challenging words and their definitions.

SAVE TO QUICK LINKS

WordLists

For Educators

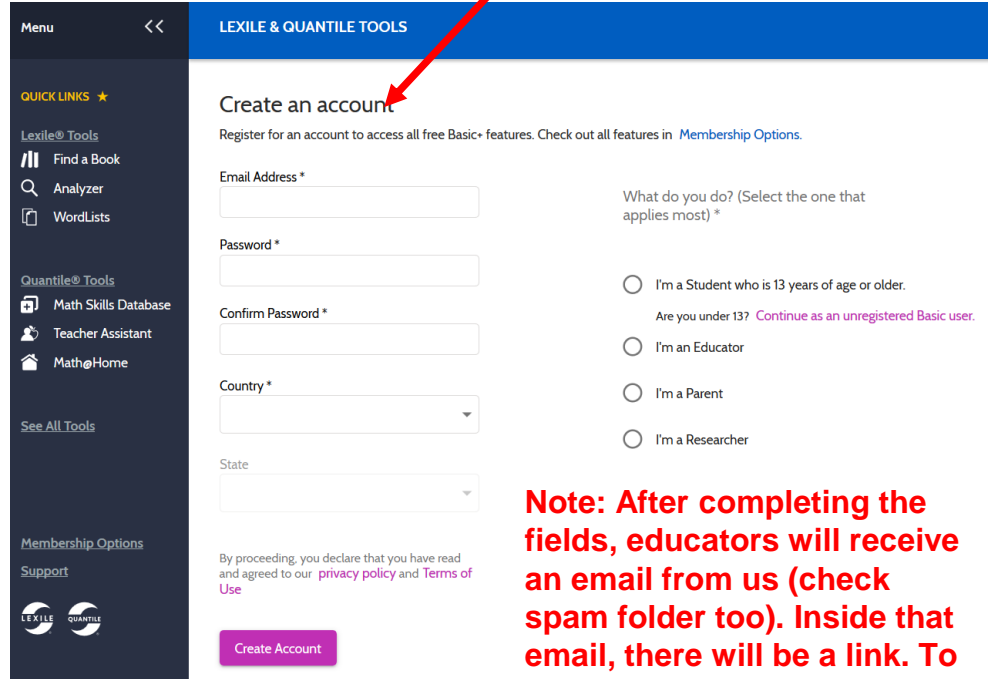
Easily download lists of important words by grade and domain, including math, science, social studies and general, that students are likely to encounter in textbooks and other learning materials.

SAVE TO QUICK LINKS

Creating Your Account

- Email
 - Password
 - Country
 - State
 - Role
-
- Be sure to confirm your email address

Note: Educators will need to use their school email address when registering.



The screenshot shows the 'Create an account' page for Lexile & Quantile Tools. The page has a dark blue sidebar on the left with a menu and quick links. The main content area is white with a blue header. The 'Create an account' section includes a registration prompt, input fields for email, password, and confirm password, and a dropdown for country. There are also radio buttons for user roles: 'I'm a Student who is 13 years of age or older.', 'I'm an Educator', 'I'm a Parent', and 'I'm a Researcher'. A 'Create Account' button is at the bottom.

Menu << LEXILE & QUANTILE TOOLS

QUICK LINKS ★

Lexile® Tools

- Find a Book
- Analyzer
- WordLists

Quantile® Tools

- Math Skills Database
- Teacher Assistant
- Math@Home

[See All Tools](#)

[Membership Options](#)

[Support](#)

LEXILE QUANTILE

Create an account

Register for an account to access all free Basic+ features. Check out all features in [Membership Options](#).

Email Address *

Password *

Confirm Password *

Country *

State

What do you do? (Select the one that applies most) *

☐ I'm a Student who is 13 years of age or older.

Are you under 13? [Continue as an unregistered Basic user.](#)

☐ I'm an Educator

☐ I'm a Parent

☐ I'm a Researcher

By proceeding, you declare that you have read and agreed to our [privacy policy](#) and [Terms of Use](#)

Create Account

Note: After completing the fields, educators will receive an email from us (check spam folder too). Inside that email, there will be a link. To complete your registration, you must click on that link and sign in!

Join us to Learn about Projected Lexile and Quantile Measures

Wednesday, August 12 9:00 - 10:00 a.m. ET

Thursday, August 13 10:00 - 11:00 a.m. ET

Thursday, August 20 12:00 - 1:00 p.m. ET

MetaMetrics will provide an overview of how forecasted measures were calculated for each student and how educators can use them to help inform next steps ahead of the 2020-2021 school year

You can request a flyer of these sessions and dates by emailing:

INassessments@doe.in.gov



Questions?

Join us for Office Hours

Every Monday 2:00 - 3:00 p.m. ET

<https://zoom.us/j/94460177886>

Every Friday 11:00 a.m. - 12:00 p.m. ET

<https://zoom.us/j/98795024861>

We will be online to answer your questions!

Feel free to contact us with questions outside of
our office hours:

Jscott@lexile.com or
Mcopeland@lexile.com



