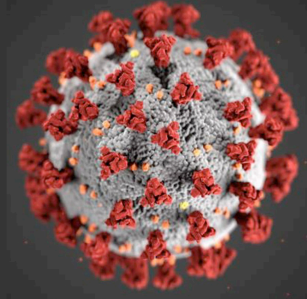


COVID-19 HUB

Demographic and Economic Resources

U.S. Census Bureau

<https://covid19.census.gov/>



What's New

NEW Page
featuring **Other**
Agency Datasets

Search by
Category

Other Federal Agency Datasets

One-stop experience to explore other agency's Apps, Maps and Datasets



Business and
Economics



Individuals and
Households



Government
Services

Business and Economics

See all >>



National

COVID-19 Impact on Museums
Survey Data
COVID-19 Impact on Museums
Survey Data... learn more



State

Arts and Cultural Production
Satellite Account Summary
Data 1999-2017 (PDF)
Arts and Cultural Production Satellite
Account Summary Data 1999-
2017... learn more



State, County, MSA

Quarterly Taxable Wage Data
1990 - Present
Taxable wages for a given quarter,
County, state, and MSA level, by
industry, yearly from 1990 -
present... learn more



Challenger, Gray
& Christmas, Inc.

State

Industry Monthly Job Cuts and
Hiring Plans Data From 2015
Industry Monthly Job Cuts and
Hiring Plans Data From 2015... learn
more

Individuals and Households

See all >>



Tribal Territories

Tribal Territory Employment
Data 2014-2018

Tribal Territory Employment Data
2014-2018 ... learn more

Explore Data



State, County

FY2020 CARES Act Formula
and Allocations

FY2020 formula and CARES Act
allocation amounts for all grantees...
learn more

Explore Data



Tribal Territories, Office Location

Indian Housing Block Grant
Allocation Data FY2020

Indian Housing Block Grant - FY
2020 Final IHBG Allocation
Summary... learn more

Explore Data



State, City, Zip Code

Monthly Multifamily Insured
Loan Data 2020

Multifamily insured loan data that
has had the PII removed, as of
August 31, 2020 (updated monthly)...
learn more

Explore Data

Search by Agency

Explore Data by Agency



View All in Gallery

Enter search terms

Filter

Item Type

Tags

Filter tags

american alliance of museums
bea
bls
business and economic
business closure
cdc
census
challenger gray and christmas

Items: 45

HHS CARES Act Provider Relief Fund Allocation Data
Document Link • Updated: 12/2/20
Allocations for the HHS Provider Relief Fund COVID-19 High-Impact Payments - individual providers by city and state. [View item details](#)

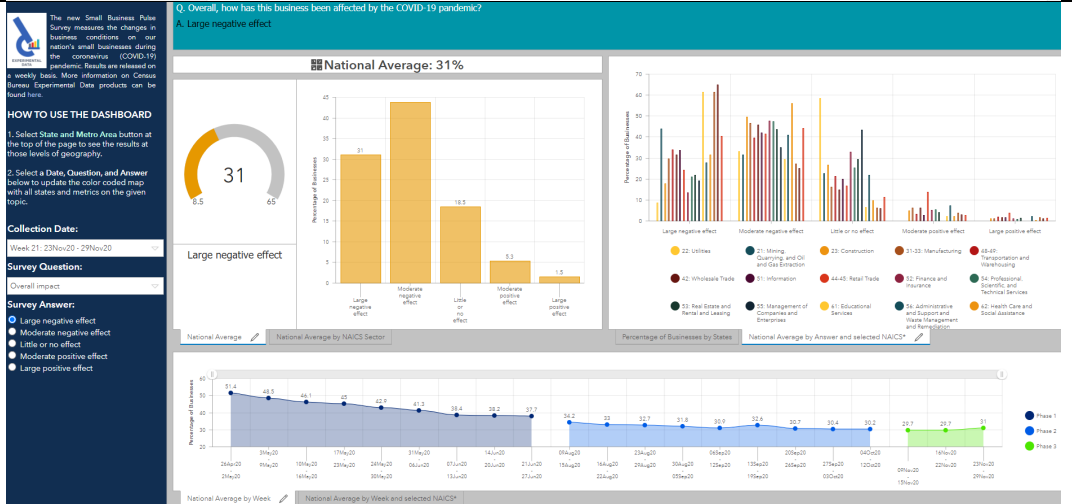
State, County, City

Reason for Unemployment Data
Document Link • Updated: 12/2/20
Current population Survey results showing unemployment data detailing the reason for unemployment. Presented in thousands; seasonally adjusted, quarterly from 2017 to present. [View item details](#)

National

Commodity Supplemental Food Program Data FY 2015-2019
Document Link • Updated: 12/2/20
Data from the USDA about the Commodity Supplemental Food Program. Data is broken out by state and contains the total participant counts from FY 2015 through FY 2019. [View item details](#)

Small Business Pulse Survey: Phase 3 Data Available Weekly



COMING SOON
International Data
and updated Non-
Employer
Statistics and
County Business
Patterns 2018
data, and 2017
Economic Census
data.

